

Table 3 : Lines observed in low dispersion CuAr spectra (150 l/mm grating)

Line	Symbol	Line	Symbol	Line	Symbol	Line	Symbol
3947.53	Ar b	4965.08	ArII	6025.150	ArI	7372.118	ArI
4043.90	Ar b	5009.334	ArII	6032.127	ArI	7383.981	ArI
4072.11	ArII	5017.163	ArII	6043.223	ArI	7435.368	ArI
4103.912	ArII	5062.037	ArII	6052.723	ArI	7471.164	ArI
4131.724	ArII	5090.495	ArII	6059.373	ArI	7503.869	ArI
4158.591	ArI	5141.783	ArII	6098.803	ArI	7514.652	ArI
4181.884	ArI	5162.285	ArI	6105.635	ArI	7635.106	ArI
4190.87	Ar b	5187.746	ArI	6114.923	ArII	7723.98	Ar b
4199.63	ArI b	5221.07	ArI w	6145.441	ArI	7891.075	ArI
4259.362	ArI	5253.13	ArI b	6155.239	ArI	7948.176	ArI
4277.528	ArII	5373.494	ArI	6172.03	Ar b	8006.157	ArI
4300.101	ArI	5421.352	ArI	6214.02	ArI b	8014.786	ArI
4331.31	ArI b	5451.652	ArI w	6243.120	ArII	8053.309	ArI
4348.064	ArII	5495.874	ArI	6296.872	ArI	8103.693	ArI
4370.753	ArII	5506.113	ArI	6307.657	ArI	8115.311	ArI
4427.05	ArII	5524.957	ArI	6369.575	ArI	8264.523	ArI
4474.759	ArII	5558.702	ArI	6384.717	ArI	8408.210	ArI
4481.811	ArII	5572.541	ArI	6416.307	ArI	8424.648	ArI
4510.733	ArI	5606.733	ArI	6677.282	ArI	8521.442	ArI
4545.052	ArII	5650.704	ArI	6684.293	ArII	8605.776	ArI
4579.350	ArII	5681.900	ArI	6752.834	ArI	8667.944	ArI
4589.899	ArII	5689.910	ArI	6871.289	ArI	8761.686	ArI
4609.567	ArII	5739.520	ArI	6937.664	ArI	8849.970	ArI
4657.901	ArII	5772.114	ArI	6965.430	ArI	9075.395	ArI
4702.316	ArI	5802.080	ArI	7030.252	ArI	9122.967	ArI
4726.868	ArII	5834.263	ArI	7067.218	ArI	9194.639	ArI
4735.906	ArII	5860.310	ArI	7107.478	ArI	9224.499	ArI
4764.865	ArII	5882.624	ArI	7125.820	ArI	9291.531	ArI
4806.021	ArII	5888.584	ArI	7147.042	ArI	9354.220	ArI
4847.810	ArII	5912.085	ArI	7206.980	ArI	9657.786	ArI
4879.864	ArII	5928.813	ArI	7272.936	ArI	9784.503	ArI
4889.042	ArII	5987.302	ArI	7311.716	ArI		
4933.209	ArII	5998.999	ArI	7353.293	ArI		

Notes to Table 3

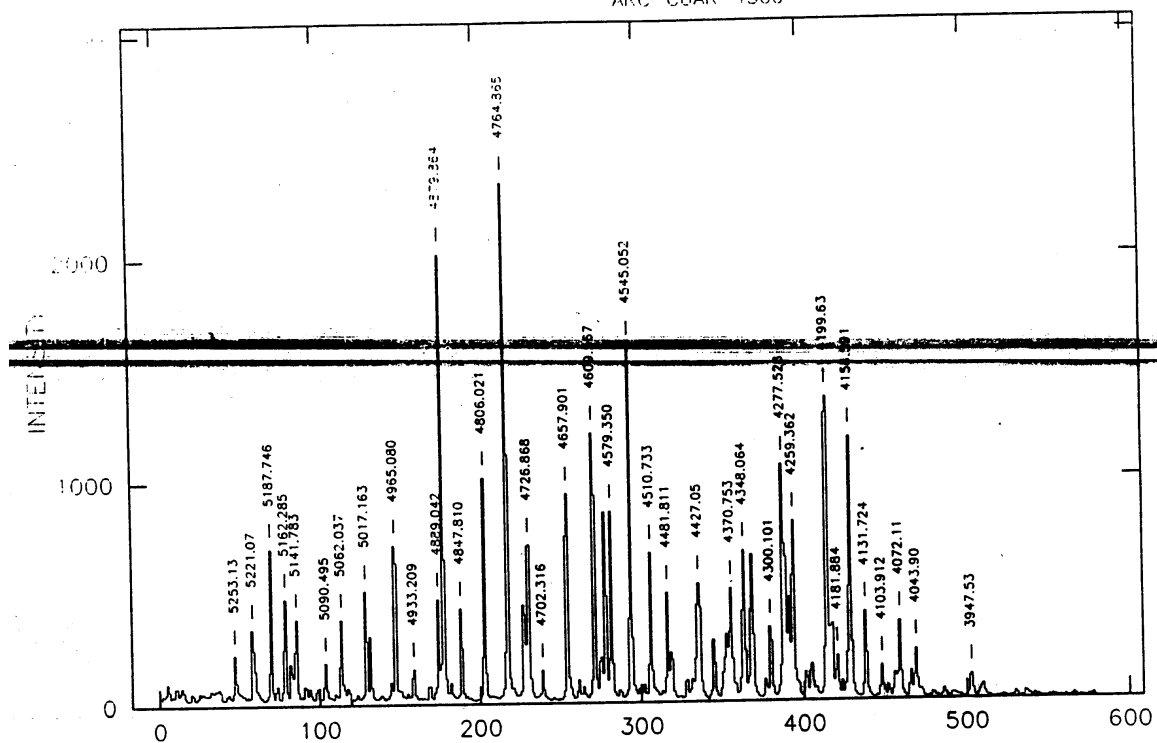
Line	
3947.53	Ar, blend of 3946.097 ArII and 3948.979 ArI
4043.90	Ar, blend of 4042.894 ArII and 4044.418 ArI
4072.11	ArII, blend of 4072.005 and 4072.385
4190.87	ArI, blend of 4190.714 and 4191.029
4199.63	ArI, blend of 4200.675 and 4198.317
4333.31	Ar, blend of ArII 4331.200 and ArI 4333.561 and 4335.338
4427.05	ArII, blend of 4426.001 and 4430.189
5221.07	ArI, weak CuI at 5218.202
5253.13	ArI, blend of ArI 5252.788 and 5254.465
5451.652	ArI, weak ArI at 5457.416
6172.03	Ar, blend of ArI 6170.174, ArII 6172.278 and ArI 6173.096
6214.02	ArI, blend of 6212.503 and 6215.938
7723.98	ArI, blend of 7723.761 and 7724.207

Figure 3: The Copper-Argon spectrum at low dispersion (150 l/mm gratings)

Notes to figure 3

Spectrum	CuAr at low dispersion	
Camera	IDS 500 mm	
Detector	GEC 3 "GEC BLUE"	
Grating	R150V	
Collimator	Al Wide	
Dispersion	131 A/mm or 0.347 pixel/A	
Exposure times	4500 & 5500 Angstrom	600 seconds
	6500	30 seconds
	7500	20 seconds
	8500 & 9500	30 seconds

ARC CUAR 4500



ARC CUAR 5500

