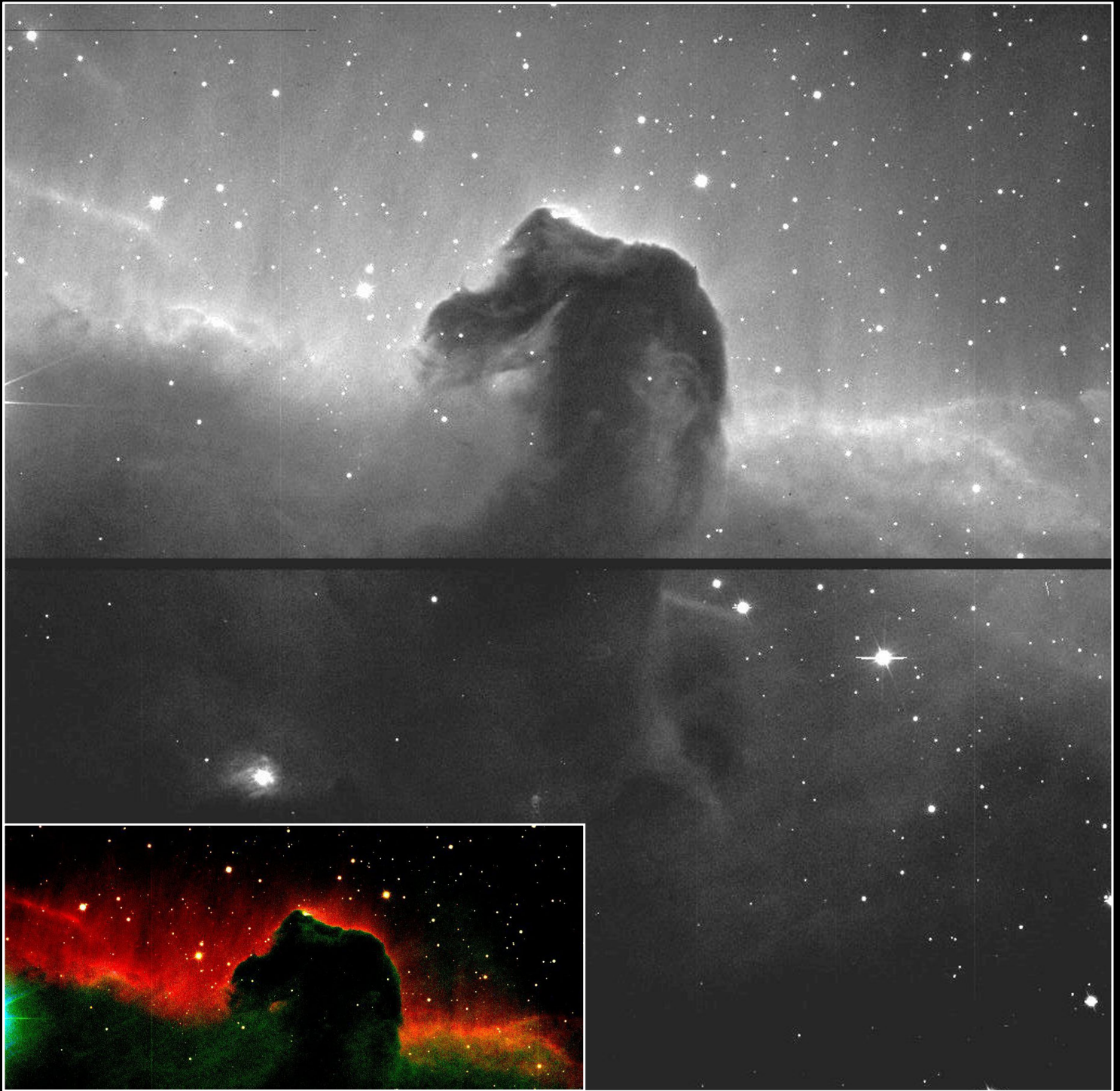


# The Horse Head Nebula



## William Herschel Telescope + 2 CCD Mosaic Prime Focus Camera



The Horse Head Nebula. This dark dust nebula, in the shape of a horse's head, protrudes into a bright emission nebula, IC 434, in the constellation Orion. A nearby naked-eye star illuminates the surface of an otherwise invisible dusty cloud, exciting the distinctive red emission from hydrogen (inset picture). From this dark cloud projects yet more dust, which has the shape of the head of a horse, seen in silhouette against the glowing background. Shown here is a 10 second integration in grey-scale obtained using the 2 CCD mosaic camera at the WHT prime focus.

*Credit: Simon Tulloch (ING) and Nik Szymanek (SPA).*

1999