

REMOVE ALL SHARP EDGES

3 HOLES  $\phi 6.00/6.02$  THRO  
& C'BORE  $\phi 7.0 \times 4$  DEEP

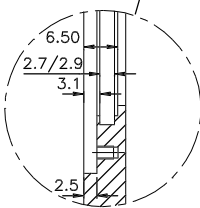
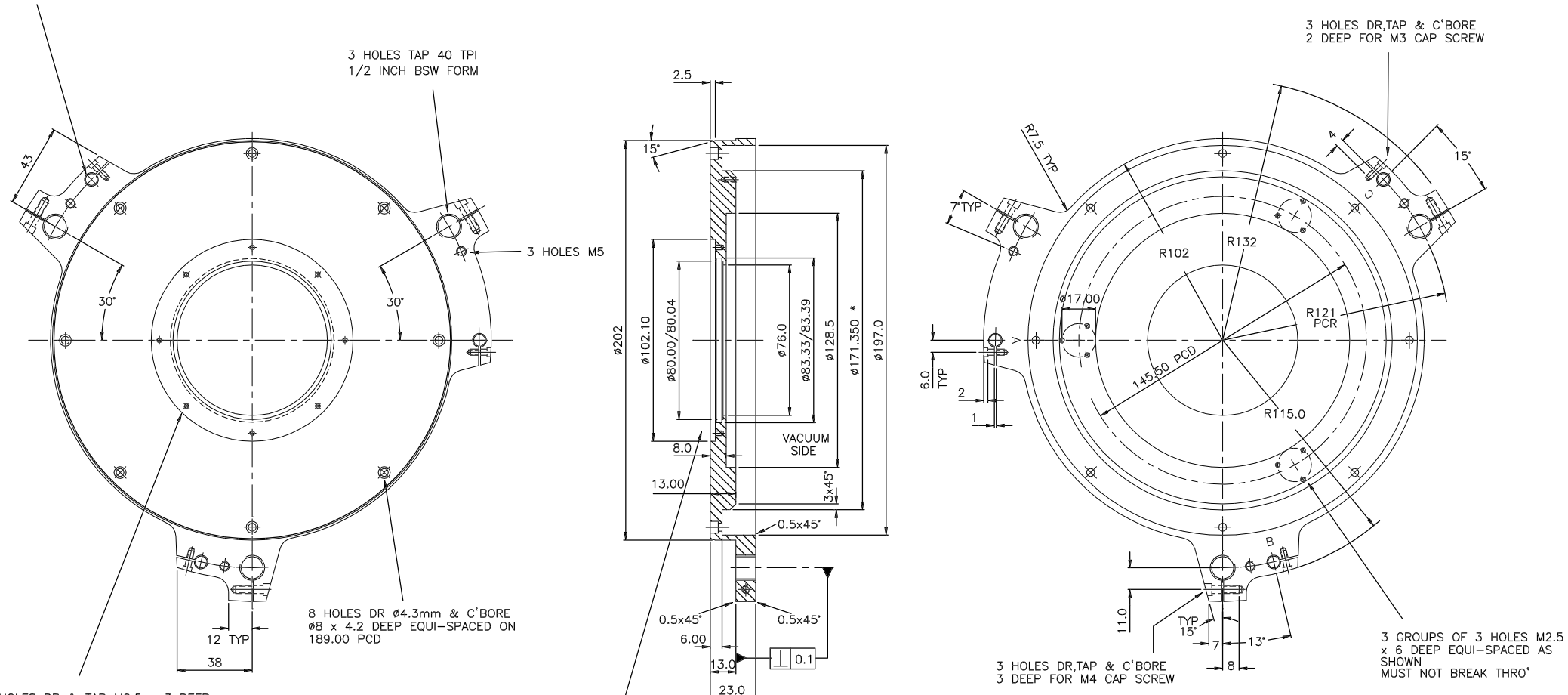
3 HOLES TAP 40 TPI  
1/2 INCH BSW FORM

3 HOLES M5

8 HOLES DR  $\phi 4.3\text{mm}$  & C'BORE  
 $\phi 8 \times 4.2$  DEEP EQUI-SPACED ON  
189.00 PCD

8 HOLES DR & TAP M2.5  $\times 3$  DEEP  
EQUI-SPACED ON 94.00 PCD  
MUST NOT BREAK THRO'  
GROUP RADIAL POSITION NOT IMPORTANT

3 HOLES DR,TAP & C'BORE  
2 DEEP FOR M3 CAP SCREW



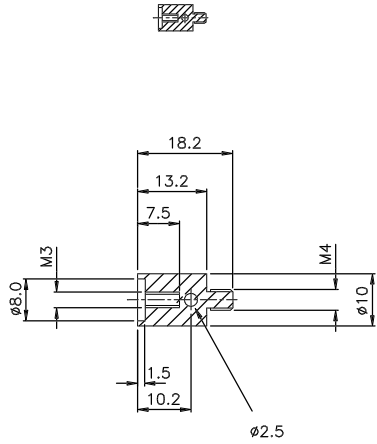
SCALE 2/1

**NOTE**  
 DIMS MARKED \* TO BE MACHINED AFTER ANODISING  
 ENGRAVE A,B & C IN POSITION SHOWN AFTER ANODISING.  
 DO NOT ANODISE ON VACUUM SIDE ie 'INSIDE' OF  $\phi 171.350$   
 REF DOWTY 'O' RING 204-080

1				TITLE CRYOSTAT FRONT FLANGE			
MATERIAL	SCALE	TOLERANCES		No. RECD. PER UNIT		FINISH	
ALLOY H30-TF	FULL	x.	$\pm 0.5$	1	XX	$\pm 0.3$	XX
SEE DRG		XX	$\pm 0.1$				
GA. No.	R.G.O.	DRAWING No.		W/RA/1001			

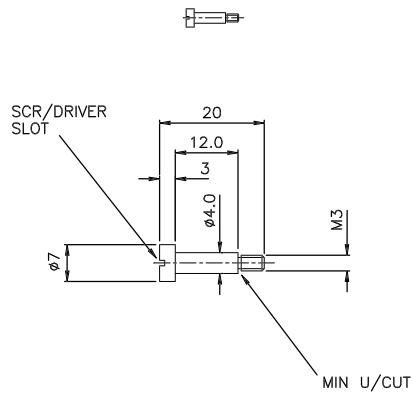
				Tolerance (Unless otherwise stated)				Material		Dimns.in m.m.		Scale		THIRD ANGLE PROJECTION		GA No.	
Issue	Mod.No	Date	Drawn by	Issue	Mod.No	Date	Drawn by	Finish	Drq.No.	No.Req.	ROYAL GREENWICH OBSERVATORY	Title		DETAIL		Drawing No.	
						25/10/98	PROMECH				MADINGLEY ROAD					W/RA/1001	
									Used on		CAMBRIDGE	CB3 0EZ					

REMOVE ALL SHARP EDGES



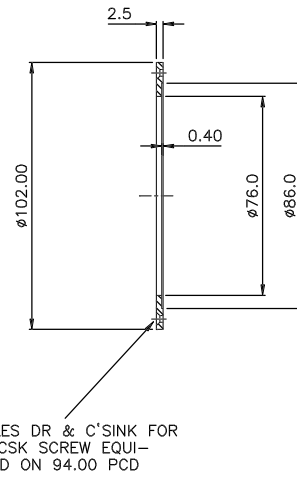
14			TITLE SPRING SEAT		
MATERIAL	SCALE	TOLERANCES			
HP30 ALLOY	2/1	x. ±0.5			
FINISH	No. RECD. PER UNIT	x.x ±0.3			
CLEAN	3	x.xx ±0.1			
G.A. No.	DRAWING No.				
W/RA/1000	R.G.O. W/RA/1014				

REMOVE ALL SHARP EDGES



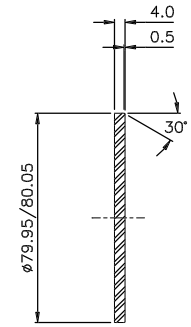
15			TITLE SHOULDER SCREW		
MATERIAL	SCALE	TOLERANCES			
ST ST 321S12	2/1	x. ±0.5			
FINISH	No. RECD. PER UNIT	x.x ±0.3			
CLEAN	3	x.xx ±0.1			
G.A. No.	DRAWING No.				
W/RA/1000	R.G.O. W/RA/1015				

REMOVE ALL SHARP EDGES



16			TITLE WINDOW RETAINER		
MATERIAL	SCALE	TOLERANCES			
ALUM ALLOY	FULL	x. ±0.5			
FINISH	No. RECD. PER UNIT	x.x ±0.3			
BLK ANODISE	1	x.xx ±0.1			
G.A. No.	DRAWING No.				
W/RA/1000	R.G.O. W/RA/1016				

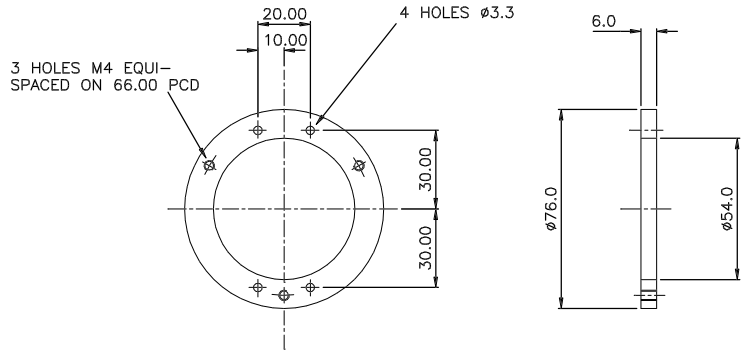
REMOVE ALL SHARP EDGES



REF  
'O' RING 204-080

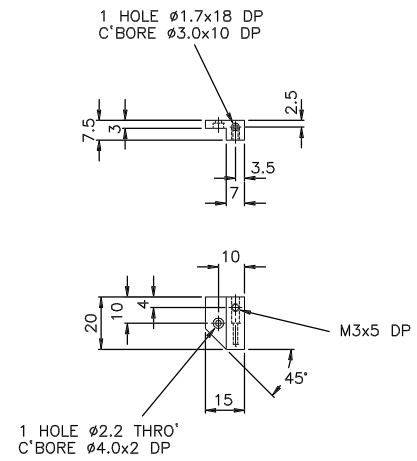
17			TITLE WINDOW		
MATERIAL	SCALE	TOLERANCES			
SPECTROSIL 'B'	FULL	x. ±0.5			
FINISH	No. RECD. PER UNIT	x.x ±0.3			
SEE DRG	1	x.xx ±0.1			
G.A. No.	DRAWING No.				
W/RA/1000	R.G.O. W/RA/1017				

REMOVE ALL SHARP EDGES



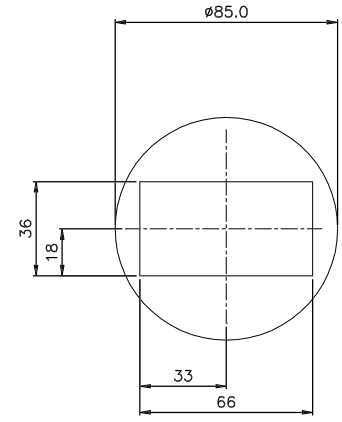
18			TITLE RING		
MATERIAL	SCALE	TOLERANCES			
COPPER	FULL	x. ±0.5			
FINISH	No. RECD. PER UNIT	x.x ±0.3			
CLEAN	1	x.xx ±0.1			
G.A. No.	DRAWING No.				
W/RA/1000	R.G.O. W/RA/1018				

REMOVE ALL SHARP EDGES



19			TITLE THERMISTOR HOLDER		
MATERIAL	SCALE	TOLERANCES			
ALUM ALLOY	FULL	x. ±0.5			
FINISH	No. RECD. PER UNIT	x.x ±0.3			
BLK ANODISE	8	x.xx ±0.1			
G.A. No.	DRAWING No.				
W/RA/1000	R.G.O. W/RA/1019				

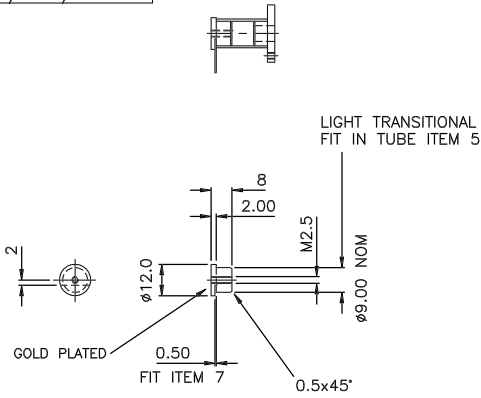
REMOVE ALL SHARP EDGES



0.50 mm THICK  
MATT BLACK BOTH SIDES

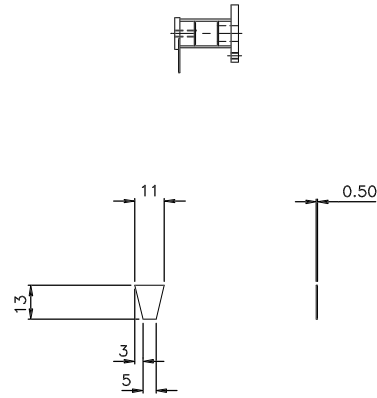
20			TITLE MASK		
MATERIAL	SCALE	TOLERANCES			
BERL COPPER	FULL	x. ±0.5			
FINISH	No. RECD. PER UNIT	x.x ±0.3			
BLK ANODISE	1	x.xx ±0.1			
G.A. No.	DRAWING No.				
W/RA/1000	R.G.O. W/RA/1020				

REMOVE ALL SHARP EDGES



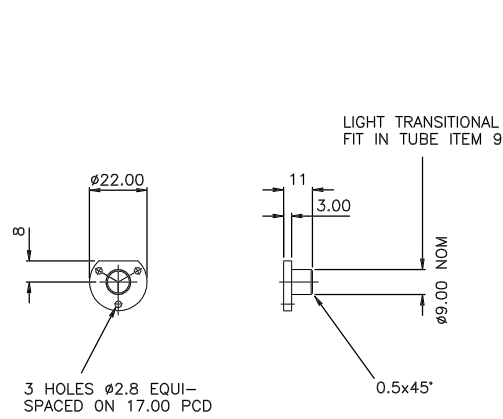
6 COOLING POST END			
MATERIAL	SCALE	TOLERANCES	
OHFC	FULL	x.	±0.5
FINISH	No. REQD. PER UNIT	x.x	±0.3
SEE DRG	3	x.xx	±0.1
G.A. No.	DRAWING No.		
W/RA/1000	R.G.O. W/RA/1006		

REMOVE ALL SHARP EDGES



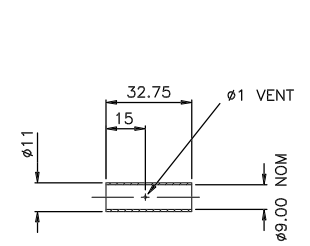
7 COOLING POST CONNECTION			
MATERIAL	SCALE	TOLERANCES	
OFHC	FULL	x.	±0.5
FINISH	No. REQD. PER UNIT	x.x	±0.3
	3	x.xx	±0.1
G.A. No.	DRAWING No.		
W/RA/1000	R.G.O. W/RA/1007		

REMOVE ALL SHARP EDGES



8 KINE FOOT			
MATERIAL	SCALE	TOLERANCES	
ST ST 321S12	FULL	x.	±0.5
FINISH	No. REQD. PER UNIT	x.x	±0.3
CLEAN	3	x.xx	±0.1
G.A. No.	DRAWING No.		
W/RA/1000	R.G.O. W/RA/1008		

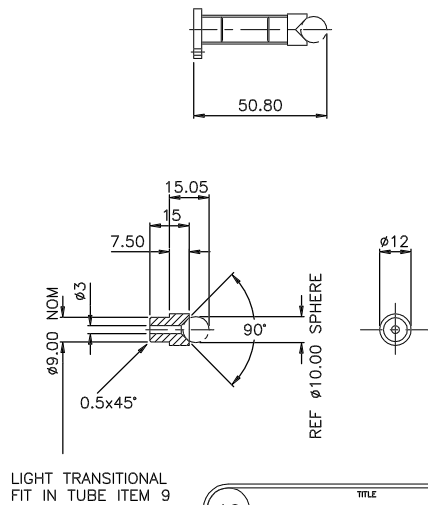
REMOVE ALL SHARP EDGES



MATERIAL  
G10 FIBRE TUBE

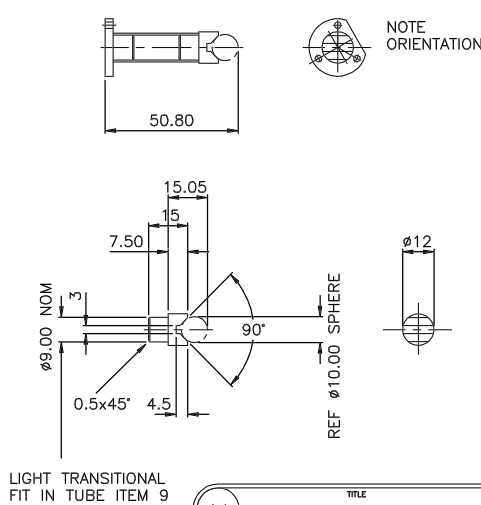
9 KINE TUBE			
MATERIAL	SCALE	TOLERANCES	
SEE DRG	FULL	x.	±0.5
FINISH	No. REQD. PER UNIT	x.x	±0.3
NATURAL	3	x.xx	±0.1
G.A. No.	DRAWING No.		
W/RA/1000	R.G.O. W/RA/1009		

REMOVE ALL SHARP EDGES



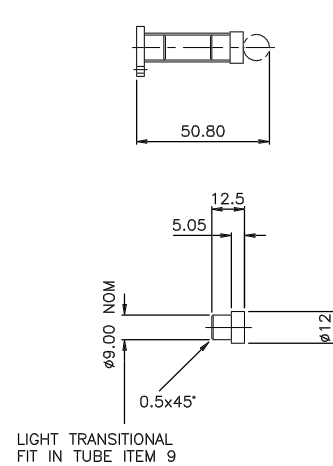
10 KINE SEAT CONE			
MATERIAL	SCALE	TOLERANCES	
ST ST 321S12	FULL	x.	±0.5
FINISH	No. REQD. PER UNIT	x.x	±0.3
CLEAN	1	x.xx	±0.1
G.A. No.	DRAWING No.		
W/RA/1000	R.G.O. W/RA/1010		

REMOVE ALL SHARP EDGES



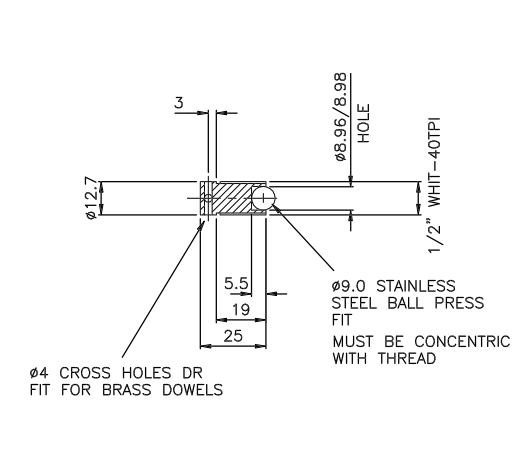
11 KINE SEAT VEE			
MATERIAL	SCALE	TOLERANCES	
ST ST 321S12	FULL	x.	±0.5
FINISH	No. REQD. PER UNIT	x.x	±0.3
CLEAN	1	x.xx	±0.1
G.A. No.	DRAWING No.		
W/RA/1000	R.G.O. W/RA/1011		

REMOVE ALL SHARP EDGES



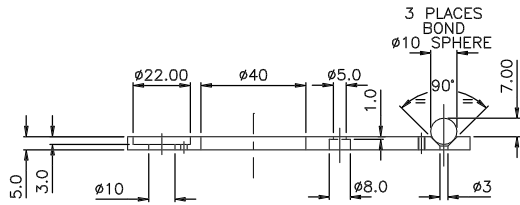
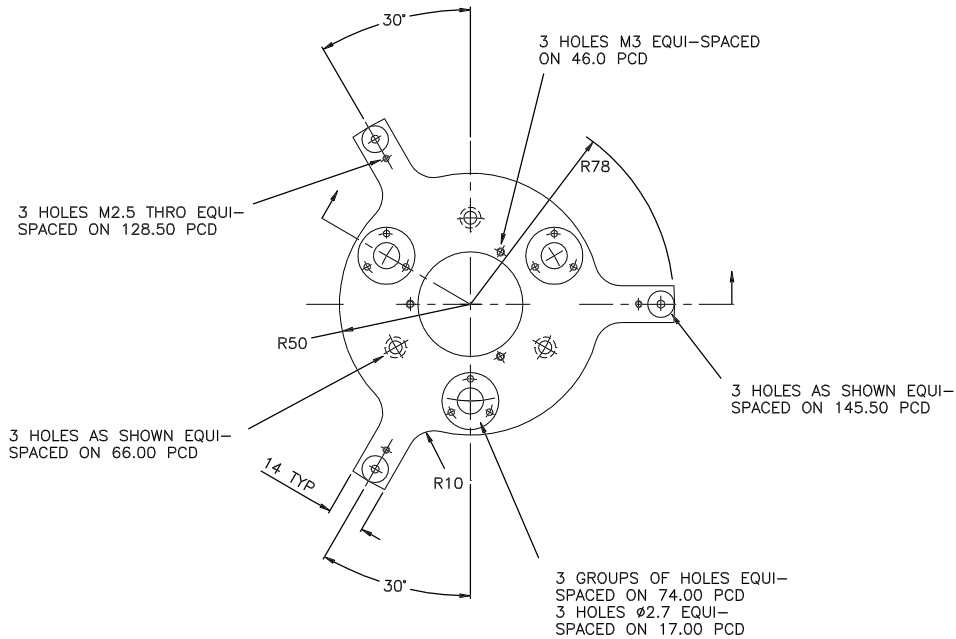
12 KINE SEAT FLAT			
MATERIAL	SCALE	TOLERANCES	
ST ST 321S12	FULL	x.	±0.5
FINISH	No. REQD. PER UNIT	x.x	±0.3
CLEAN	1	x.xx	±0.1
G.A. No.	DRAWING No.		
W/RA/1000	R.G.O. W/RA/1012		

REMOVE ALL SHARP EDGES



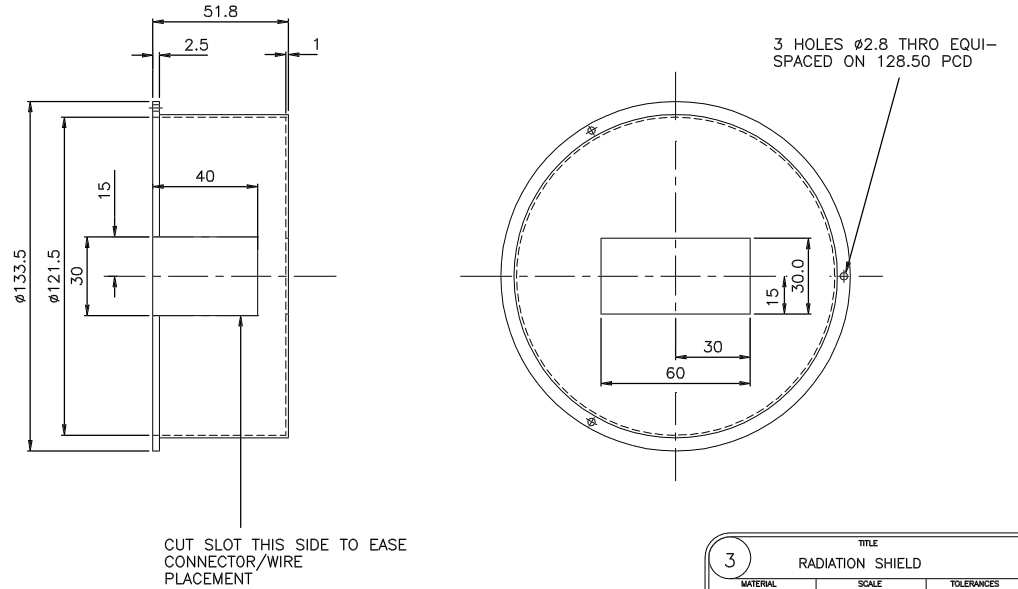
13 FOCUS SCREW			
MATERIAL	SCALE	TOLERANCES	
BRASS	FULL	x.	±0.5
FINISH	No. REQD. PER UNIT	x.x	±0.3
CLEAN	3	x.xx	±0.1
G.A. No.	DRAWING No.		
W/RA/1000	R.G.O. W/RA/1013		

REMOVE ALL SHARP EDGES



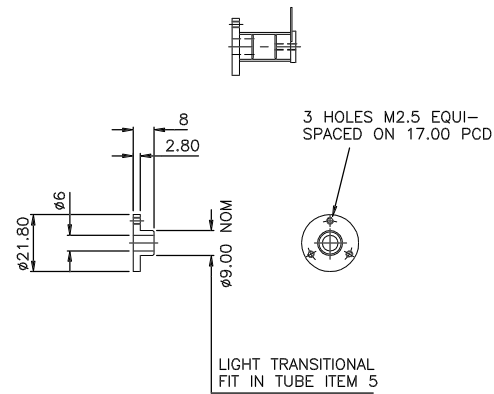
2			TITLE		
KINEMATIC PLATE					
MATERIAL	SCALE	TOLERANCES			
ST ST 321S12	FULL	x. $\pm$ 0.5			
FINISH	No. RECD. PER UNIT	x.x $\pm$ 0.3			
BRIGHT/POLISH	1	x.xx $\pm$ 0.1			
GA. No.	DRAWING No.				
W/RA/1000	R.G.O.	W/RA/1002			

REMOVE ALL SHARP EDGES



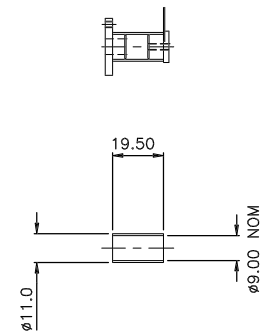
3			TITLE		
RADIATION SHIELD					
MATERIAL	SCALE	TOLERANCES			
HP 30 ALLOY	FULL	x. $\pm$ 0.5			
FINISH	No. RECD. PER UNIT	x.x $\pm$ 0.3			
CLEAN	1	x.xx $\pm$ 0.1			
GA. No.	DRAWING No.				
W/RA/1000	R.G.O.	W/RA/1003			

REMOVE ALL SHARP EDGES



4			TITLE		
COOLING POST FLANGE					
MATERIAL	SCALE	TOLERANCES			
ST ST 321S12	FULL	x. $\pm$ 0.5			
FINISH	No. RECD. PER UNIT	x.x $\pm$ 0.3			
CLEAN	3	x.xx $\pm$ 0.1			
GA. No.	DRAWING No.				
W/RA/1000	R.G.O.	W/RA/1004			

REMOVE ALL SHARP EDGES



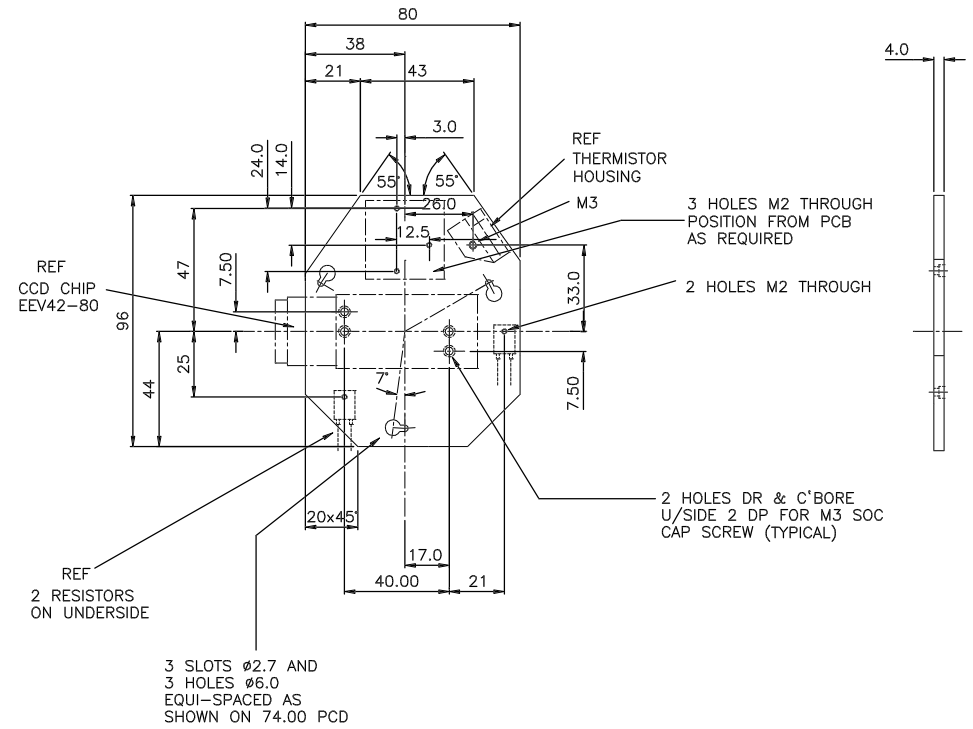
MATERIAL  
G10 FIBRE TUBE

5			TITLE		
COOLING POST					
MATERIAL	SCALE	TOLERANCES			
SEE DRG	FULL	x. $\pm$ 0.5			
FINISH	No. RECD. PER UNIT	x.x $\pm$ 0.3			
NATURAL	3	x.xx $\pm$ 0.1			
GA. No.	DRAWING No.				
W/RA/1000	R.G.O.	W/RA/1005			

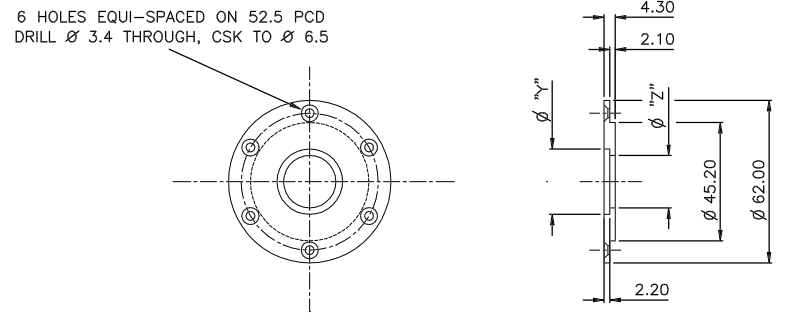
Issue	Mod.No	Date	Drawn by	Issue	Mod.No	Date	Drawn by

Material		Dimns.in m.m.		Scale	
Finish		Drg.No.		No.Req.	
Used on		ROYAL GREENWICH OBSERVATORY		Title	
		MADINGLEY ROAD		THIRD ANGLE PROJECTION	
		CAMBRIDGE CB3 0EZ		DETAIL	

REMOVE ALL SHARP EDGES



REMOVE ALL SHARP EDGES



- 1 FLANGE REQd. - "Y" = 25.0  
"Z" = 20.0
- 1 FLANGE REQd. - "Y" = 34.0  
"Z" = 31.9

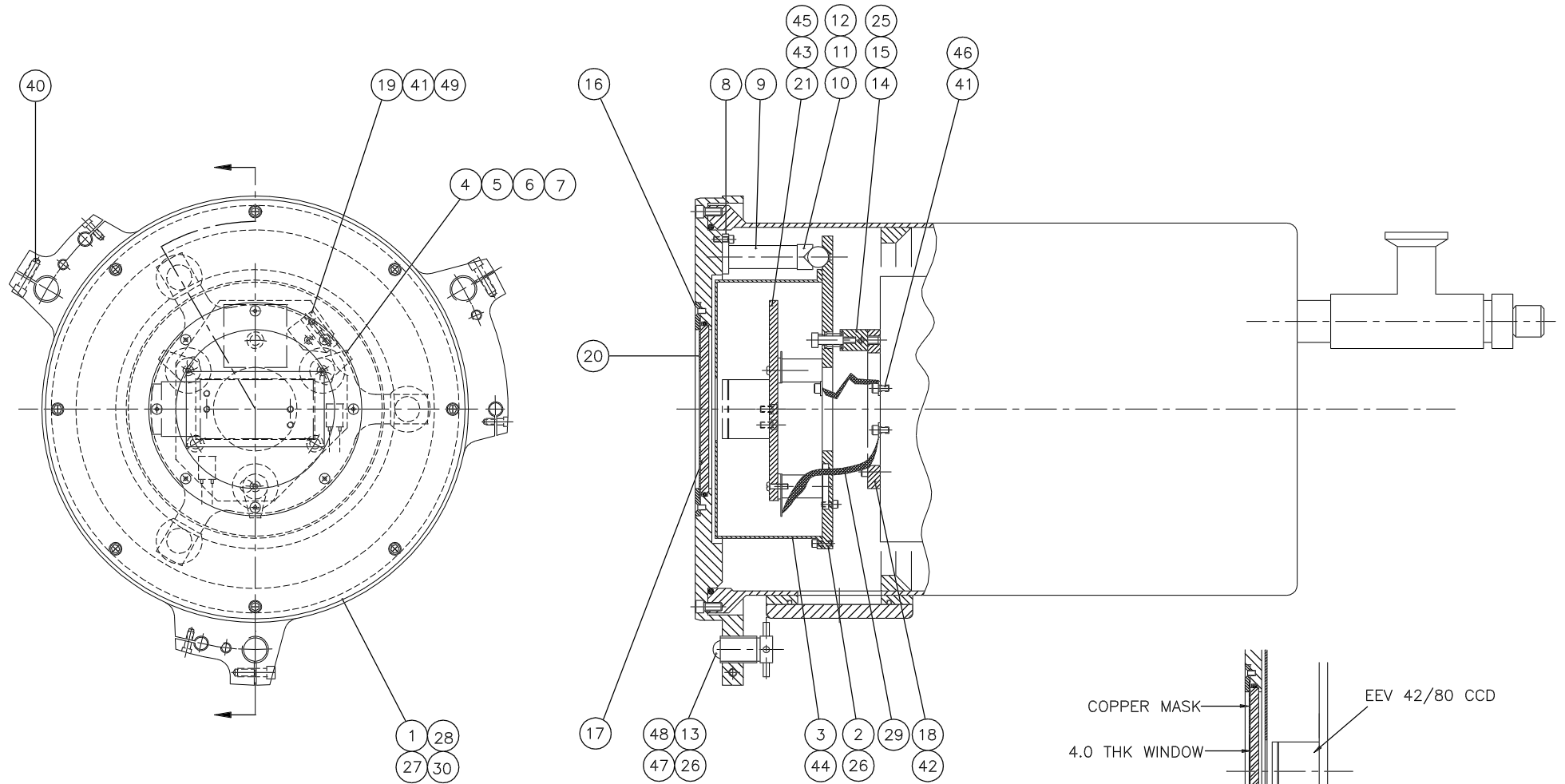
(CHECK WITH STANDARD OXFORD INSTRUMENTS CAPPING PLATE)

21		TITLE COLD BLOCK	
MATERIAL INVAR	SCALE FULL	TOLERANCES x. $\pm 0.5$ x.x $\pm 0.3$ x.xx $\pm 0.1$	
FINISH POLISH	No. RECD. PER UNIT 1		
G.A. No. W/RA/1000	DRWING No. R.G.O. W/RA/1021		

22		TITLE PLUG MOUNT-CAPPING PLATE	
MATERIAL BRASS	SCALE FULL	TOLERANCES x. $\pm 0.5$ x.x $\pm 0.3$ x.xx $\pm 0.1$	
FINISH CHROME PLT.	No. RECD. PER UNIT 2		
G.A. No. W/RA/1000	DRWING No. R.G.O. W/RA/1022		

Tolerance (Unless otherwise stated)				Material		Dimns.in m.m.		Scale		THIRD ANGLE PROJECTION		GA No.	
x. +/-				Invar		ROYAL GREENWICH OBSERVATORY		MADINGLEY ROAD		Title		Drawing No.	
x.x +/-				Finish		CAMBRIDGE CB3 0EZ		DETAILS		W/RA/1021			
x.xx +/-				Used on									
ANG. +/-													
Issue	Mod.No	Date	Drawn by	Issue	Mod.No	Date	Drawn by						
		25/10/98	PROMECH										

REMOVE ALL SHARP EDGES



FUNDAMENTAL DIMENSIONS

Issue				Mod.No				Date				Drawn by				Tolerance (Unless otherwise stated)		Material		Dimns.in m.m.		Scale		Title		GA No.			
																X	+/-												
																X.X	+/-												
																X.XX	+/-												
																ANG.	+/-												



