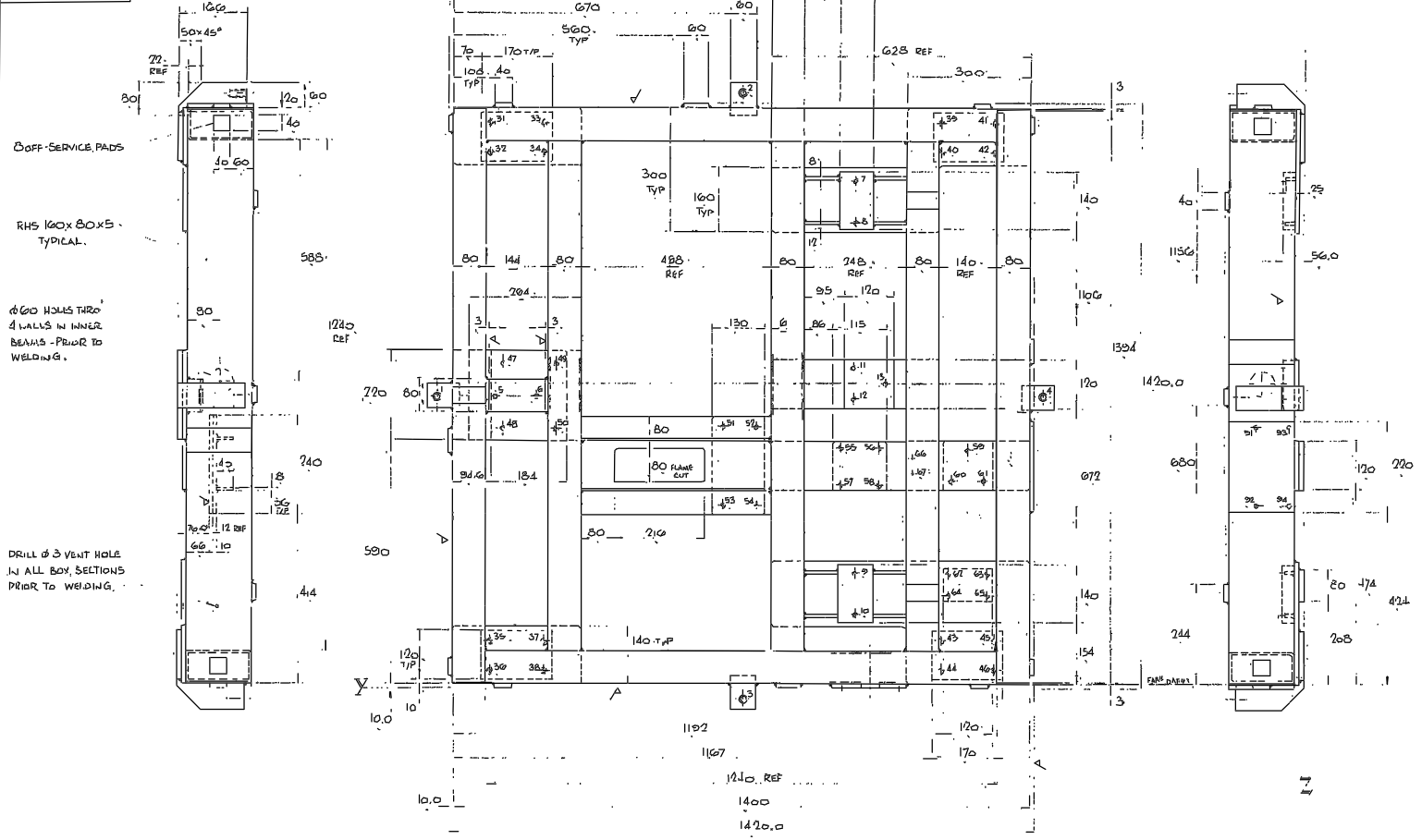


DRG No
V/FX/352



HOLE	X	Y	Z	SIZE
81	1016.75		162.00	Ø30 THRO 2mm
82	946.75		172.00	M6 THRO
83	960.75		48.00	
84	1084.75		172.00	
86	1672.75		46.00	
87				
88				
89				
90				
91	640.00	117.00		M8 THRO
92	448.00	117.00		
93	640.00	37.00		
94	448.00	37.00		
95				
96				
97				

HOLE	X	Y	SIZE
1	75.0	710.0	M10 x 40 DP SPAC MAGNET
2	710.0	1445.0	"
3	710.0	725.0	"
4	1445.0	710.0	"
5	110.00	710.00	M10 x 20 DP
6	710.00	710.00	"
7	985.00	1234.31	"
8	985.00	1136.31	"
9	985.00	289.89	"
10	985.00	183.89	"
11	278.75	779.75	M8 THRO
12	578.75	779.75	"
13	184.75	741.75	"
14			
15			
16			
17			
18			
19			
20			
21			
22			
23			
24			
25			
26			
27			
28			
29			
30			
31	100.00	1376.00	M12 x 20 DP
32	100.00	1364.00	"
33	230.00	1376.00	"
34	230.00	1364.00	"
35	100.00	116.00	"
36	100.00	44.00	"
37	230.00	116.00	"
38	230.00	44.00	"
39	1127.00	1376.00	"
40	1127.00	1364.00	"
41	1327.00	1376.00	"
42	1327.00	1364.00	"
43	1127.00	116.00	"
44	1127.00	44.00	"
45	1327.00	116.00	"
46	1327.00	44.00	"
47	132.60	790.00	M12 THRO
48	132.60	630.00	"
49	202.60	790.00	"
50	202.60	630.00	"
51	633.00	633.00	M10 THRO
52	763.00	633.00	"
53	633.00	442.00	"
54	763.00	442.00	"
55	963.00	583.00	M10 THRO
56	1043.00	583.00	"
57	963.00	493.00	"
58	1043.00	493.00	"
59	1262.00	583.00	M8 THRO
60	1224.00	506.00	"
61	1300.00	506.00	"
62	1217.00	284.00	M10 THRO
63	1307.00	284.00	"
64	1217.00	232.00	"
65	1307.00	232.00	"
66	1127.00	563.00	M8 THRO
67	1127.00	525.00	"
68			
69			
70			

NOTE!
CONTINUOUS WELD W L.
STRESS RELIEVE AS REQ & M/E W V.
PRIME & PAINT UNMACHINED SURFACES
YELLOW TO R.G.O SPECIFICATION.
SWL1500 kg
* TO BE PROOF TESTED TO 2000 kg (CERT REQ'D)
SAFETY EXECUTIVE FORM F97 REQUIRED.
PAINT 1500 kg SWL ON CHASSIS.

* SEE GA. V/FX/350-SIMI

CHASSIS FRAME	
M.S. FABRICATION	1/4 FULL
SEE NOTE	AS D.O.D
REV. V/FX/352	

Tolerances (Unless otherwise stated)						Material		Dim's. in m.m.		Scale	Title		G.A. No. V/FX/350-351.1	
Issue	Mod No	Date	Drawn By	Issue	Mod No.	Date	Drawn By				THIRD ANGLE PROJECTION		Drawing No. V/FX/352	
											DETAIL			

ROYAL GREENWICH OBSERVATORY,
HERSTMINGCEUX CASTLE,
HAILSHAM
SUSSEX.

DRAWING NUMBER	No. of Sheets	G.A. Item No.	DRAWING TITLE OR COMPONENT NAME	No. off	MATERIAL STOCK OR ORDER No. AND DATE	REMARKS	ISSUE DATE	ISSUED TO	FINISH DATE
/ /		190	KEY - 6 x 6 x 40 (SQ ENDS)	6					
/ /									
/ /									
/ /									
/ /									
/ /									
/ /									
/ /									
/ /									
/ /		200	SOC HD CAP SCREW M12 x 60	8					
/ /		201	" " M12 x 40	12					
/ /		202	" " M10 x 50	4					
/ /		203	" " M10 x 45	4					
/ /		204	" " M10 x 40	2					
/ /		205	" " "						
/ /		206	" " M10 x 25	4					
/ /		207	" " M8 x 20	10					
/ /		208	" " M8 x 16	15					
/ /		209	" " M6 x 25	49					
/ /		210	" " M6 x 20	8					
/ /		211	" " M7 x 16	6					
/ /		212	" " M5 x 20	4					
/ /		213	" " M5 x 16	23					
/ /		214	" " M4 x 16	18					
/ /		215	" " M4 x 12	3					
/ /		216	" " M4 x 10	8					
/ /		217	" " M3 x 16	6					
/ /		218	" " M3 x 10	32					
/ /									
/ /		220	SOC HD CSK SCREW M6 x 16	4					
/ /		221	" " " M5 x 16	2					
/ /									
/ /		223	ROUND HD SCREW M3 x 10	24					
/ /									
/ /		225	SOC GRUB SCREW M8 x 10	2					
JOB TITLE						ASSY DRG. No.	SHEET No.	DRAWN BY	
4,2M A & G TRANSPORTER						V/FX/350	6	PROME C	
ROYAL GREENWICH OBSERVATORY,						HERSTMONCEUX CASTLE,	HAILSHAM,	DATE NOV 87	
								SUSSEX	

DRAWING NUMBER	No. of Sheets	G.A. Item No.	DRAWING TITLE OR COMPONENT NAME	No. of	MATERIAL STOCK OR ORDER No. AND DATE	REMARKS	ISSUE DATE	ISSUED TO	FINISH DATE
/ /		120	BRG. - SKF-Ø305-2Z	4					
/ /		121	" " 6003-2Z	2					
/ /		122	" " 6005-2Z	4					
/ /		123							
/ /		124	" " 6002-2Z	3					
/ /		125	" " 6001-2Z	1					
/ /		126	" " 16004-2Z	2					
/ /		127	" " NUP 210	1					
/ /		128	" " NAKD-19	2					
/ /		129	" " 6004-2Z	2					
/ /		130	ANGLGEAR-NEETER DRIVE-SIZE3	2					
/ /		131	BALL UNIT-ALWAYSE-1025 TYPE25	15					
/ /		132	COUPLING-FENNER-ESSEX-075-14/14	4					
/ /		133	" " " 075-14/20	3					
/ /		134	BELT-FENNER-HTD 8M-880	1					
/ /		135	PULLEY-FENNER HTD Ø43K0050	1					
/ /		136	" " " Ø13K0020	1					
/ /		137	TAPERLOC BUSH-FENNER-029K0018	1					
/ /		138	" " " 029K0018	1					
/ /		139	COUPLING-FENAFLEX-033A050703	1					
/ /		140	TAPERLOC BUSH-FENNER-029A0020	2					
/ /		141	COUPLING-FENAFLEX-033B0503	1					
/ /		142	TAPERLOC BUSH-FENNER-029C0020	1					
/ /		143	" " 029C0032	1					
/ /		144	BELT-FENNER-HTD 8M-560	1					
/ /		145	PULLEY " " Ø43L0040	2					
/ /		146	TAPERLOC BUSH-FENNER-029K0016	1					
/ /		147	" " " 029K0020	1					
/ /		148	BELT-KENYON-450H100	1					
/ /		149	PULLEY -" - 48H100F	1					
/ /		150	" " 16H100F	1					
/ /		151	KENLOK BUSH 1108-20	1					
/ /		152	" " 2012-45	1					
/ /		153	GEAR-SPUR-2M-10t STEEL	1	MUFFETT	SEE DRG W/FX/448			
/ /		154	" " " 48t CI	1	"	" " W/FX/449			
/ /		155	SCREW PLUNGER-KSM8HWN205S	1	WIX + ROYD LTD				
JOB TITLE					ASSY No.	SHEET No.	DRAWN BY		
4,2M A & G TRANSPORTER					V/FX/350	4	PROMEC		
ROYAL GREENWICH OBSERVATORY,					HERSTMONCEUX CASTLE,		DATE NOV 87		
					HAILSHAM,		SUSSEX		

DRAWING NUMBER	No. of Sheets	G.A. Item No.	DRAWING TITLE OR COMPONENT NAME	NO of	MATERIAL STOCK OR ORDER No. AND DATE	REMARKS	ISSUE DATE	ISSUED TO	FINISH DATE
/ 1422		72	PACKER	15					
W/FX/423	1	73	PACKER	3		(EACH PART 2 PAGES)			
/ 1424		74	BRG PLATE	1					
/ 1425		75	" "	1					
/ 1426		76	PACKER	3					
/ 1427		77	BLOCK	1					
/ 1428		78	SPINDLE	1					
W/FX/429	1	79	BRG HSG	1					
/ 1430		80	SPINDLE	1					
/ 1431		81	BACK PLATE	1					
W/FX/432	1	82	COVER	1					
/ 1433		83	SHAFT	1					
/ 1434		84	"	1					
/ 1435		85	"	1					
/ 1436		86	GUIDE POST	4					
W/FX/437	1	87	PACKER	4					
/ 1438		88	LOCATOR	4					
/ 1439		89	BUSH BLOCK	2					
/ 1440		90	BLOCK	4					
/ 1441		91	SCREW	4					
/ 1442		92	JIG PIN	2					
/ 1443		93	SPACER	4					
/ 1444		94	LINER	4					
W/FX/445	1	95	SCREW JACK (DRG)	-		SEE ITEM 162			
/ 1446		96	" " "	-		" " 163			
/ 1447		97	SCREW	2					
/ 1448		98	GEAR - MOD. DRG	-		SEE ITEM 164			
/ 1449		99	" " "	-		" " 164			
/ /									
/ /									
/ /									
/ /									
/ /									
/ /									
/ /									
JOB TITLE						ASSY DRG. No.	SHEET No.	DRAWN BY	
4,2M A & G TRANSPORTER						V/FX/350	3	PROMEC	
ROYAL GREENWICH OBSERVATORY,						HERSTMONCEUX CASTLE,	HAILSHAM,	SUSSEX	
								DATE NOV 87	

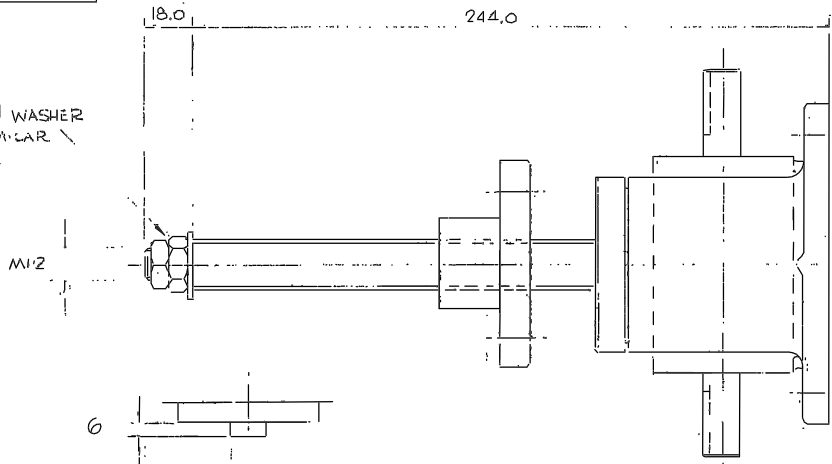
DRAWING NUMBER	No. of Sheets	G.A. Item No.	DRAWING TITLE OR COMPONENT NAME	No. of	MATERIAL STOCK OR ORDER No. AND DATE	REMARKS	ISSUE DATE	ISSUED TO	FINISH DATE
/ 1386		36	PACKER	1					
W/FX/387	1	37	BRG BLOCK	1					
/ 1388		38	PACKER	1					
/ 1389		39	"	1					
W/FX/390	1	40	BRG BLOCK	1					
/ 1391		41	PIVOT BLOCK	1					
/ 1392		42	LEVER	2					
W/FX/393	1	43	CLUTCH SHAFT	1					
/ 1394		44	SLIDING DOG CLUTCH	1					
/ 1395		45	FIXED DOG CLUTCH	1					
W/FX/396	1	46	BAR	2					
/ 1397		47	SHOULDER SCREW	2					
/ 1398		48	SPACER	1					
/ 1399		49	BLOCK	1					
/ 1400		50	BAR	2					
/ 1401		51	SPACER	1					
/ 1402		52	RING	1					
W/FX/403	1	53	SHAFT	1					
/ 1404		54	SPINDLE	1					
/ 1405		55	BRG HOUSING	1					
/ 1406		56	SPINDLE	1					
W/FX/407	1	57	BRG CAP	1					
/ 1408		58	" "	3					
/ 1409		59	" "	2					
/ 1410		60	'C' WASHER	1					
/ 1411		61	BRG CAP	1					
/ 1412		62	" "	1					
/ 1413		63	IDLER SHAFT	2					
/ 1414		64	SPACER	2					
W/FX/415	1	65	BACKPLATE	1					
W/FX/416	1	66	COVER	1					
W/FX/417	1	67	BRG PLATE	1					
/ 1418		68	BASE PLATE	1					
/ 1419		69	PLATE	2					
/ 1420		70	"	1					
/ 1421		71	IDLER	2					
JOB TITLE 4,2M A & G TRANSPORTER						ASSY DRG. No. V/FX/350	SHEET No. 2	DRAWN BY PROMEC DATE NOV 87	
ROYAL GREENWICH OBSERVATORY,						HERSTMONCEUX CASTLE,	HAILSHAM,	SUSSEX	

DRAWING NUMBER	No. of Sheets	G.A. Item No.	DRAWING TITLE OR COMPONENT NAME	No. of	MATERIAL STOCK OR ORDER No. AND DATE	REMARKS	ISSUE DATE	ISSUED TO	FINISH DATE
V/FX/350	5	1	GENERAL ASSEMBLY	1					
V/FX/351	1	1	TOP FRAME	1					
V/FX/352	1	2	CHASSIS FRAME	1					
W/FX/353	1	3	PLATE	1					
W/FX/354	1	4	HANDLE	1					
W/FX/355	1	5	PIVOT BRACKET	1					
/ / 356	-	6	STEERING ARM	1					
W/FX/357	1	7	STRAP	1					
/ / 358		8	STOP	1					
/ / 359		9	SPINDLE	1					
/ / 360		10	BAR	1					
/ / 361		11	PIN	1					
/ / 362		12	PIVOT PIN	1					
/ / 363		13	ROD CONNECTOR	1					
W/FX/364	1	14	STEERING ROD	2					
/ / 365		15	SPACER	2					
/ / 366		16	"	1					
/ / 367		17	"	1					
/ / 368		18	CASTOR BRK'T LH	1					
/ / 369		19	" " RH	1					
W/FX/370	1	20	PACKER	3					
/ / 371		21	SPRING PLATE	1					
/ / 372		22	" "	1					
/ / 373		23	FIXED CASTOR (MOD DRG)	1					
/ / 374		24	SWIVEL " " "	2					
W/FX/375	1	25	DRIVE CASTOR " "	1					
/ / 376		26	WHEEL SHAFT	1					
/ / 377		27	SHAFT	1					
W/FX/378	1	28	BRG CAP	2					
/ / 379		29	SPACER	2					
/ / 380		30	"	2					
/ / 381		31	"	1					
/ / 382		32	"	1					
/ / 383		33	BRG CAP	4					
/ / 384		34	WASHER	1					
/ / 385		35	PACKER	1					

JOB TITLE 4,2 M A&G TRANSPORTER	ASSY DRG. No. V/FX/350	SHEET No. 1 of 7	DRAWN BY PROMEC
			DATE NOV 87
ROYAL GREENWICH OBSERVATORY,	HERSTMONCEUX CASTLE,	HAILSHAM,	SUSSEX

Drawing No. 145
 W/FX/449

NUTS & WASHER
 OR SIMILAR
 STOP.



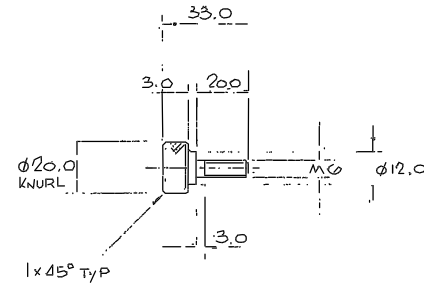
ITEM 95
 (ONLY T. 3 END)
 REMOVED

SUPPLIER - NEEFER DRIVE LTD.

TITLE			
95 SCREW JACK (DRG)			
MATERIAL	SCALE	TOLERANCES	
1-MSJ-UR	1/1	X	±1
FINISH	NO REQD PER UNIT	XX	±0.2
		XXX	
G.A. No	DRAWING No		
V/FX/350 SHT.5	R.G.O. W/FX/445		

TITLE			
96 SCREW JACK (DRG)			
MATERIAL	SCALE	TOLERANCES	
1-MSJ-UR	1/1	X	±1
FINISH	NO REQD PER UNIT	XX	±0.2
		XXX	
G.A. No	DRAWING No		
V/FX/350 SHT.5	R.G.O. W/FX/446		

TITLE			
97 SCREW			
MATERIAL	SCALE	TOLERANCES	
SIL STL	1/1	X	±1
FINISH	NO REQD PER UNIT	XX	±0.2
		XXX	
G.A. No	DRAWING No		
V/FX/350 SHT.5	R.G.O. W/FX/447		



5.01
 2.95



18.40
 18.30

φ16.00
 REF

MODIFY STD MUFFETT

SPUR GEAR-2A-16+ STEEL

6.01
 5.95



22.90
 22.80

φ22.00
 REF

MODIFY STD MUFFETT

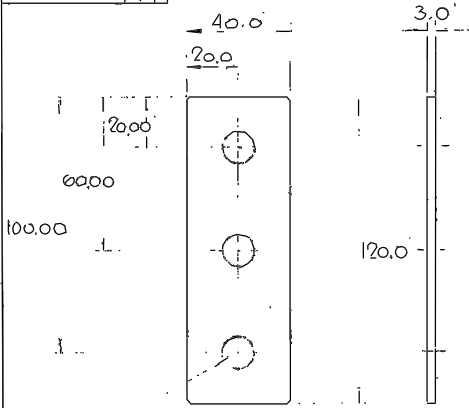
SPUR GEAR-2M-18+ C.I.

TITLE			
98 GEAR-MOD DRG.			
MATERIAL	SCALE	TOLERANCES	
B/O MUFFETT	1/1	X	±1
FINISH	NO REQD PER UNIT	XX	±0.2
		XXX	±0.1
G.A. No	DRAWING No		
V/FX/350 SHT.4	R.G.O. W/FX/448		

TITLE			
99 GEAR-MOD DRG.			
MATERIAL	SCALE	TOLERANCES	
B/O MUFFETT	1/1	X	±1
FINISH	NO REQD PER UNIT	XX	±0.2
		XXX	±0.1
G.A. No	DRAWING No		
V/FX/350 SHT.4	R.G.O. W/FX/449		

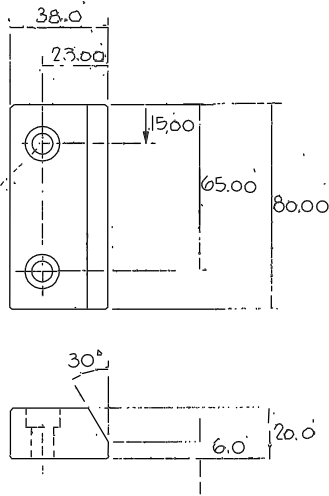
Tolerances (Unless otherwise stated)				Material		Dim in mm.		Scale		THIRD ANGLE PROJECTION		G.A. No.	
X ±1				Finish		ROYAL GREENWICH OBSERVATORY, HERSTMONCEUX CASTLE HAILSHAM		SUSSEX.		Title		Drawing No.	
XX ±0.2				Used on		Drg. No.		No. Req.		DETAIL		W/FX/445	
XXX ±0.1												To 449	

Drawing No. 437
To W/FX/444

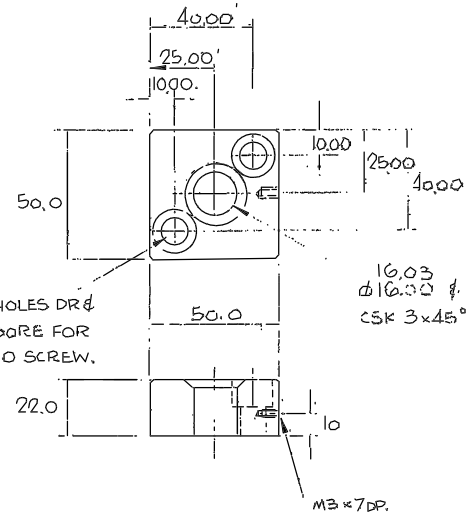


3 HOLES $\phi 12.7$

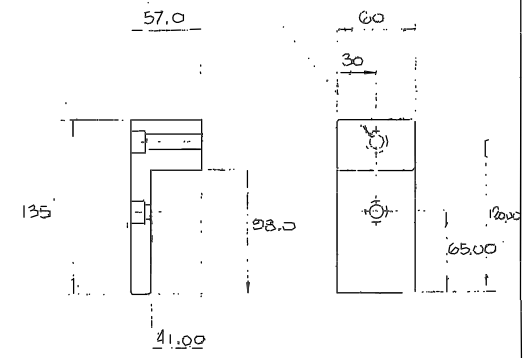
2 HOLES DR ϕ C'BORE FOR M8 CAP SCREW.



2 HOLES DR ϕ C'BORE FOR M10 SCREW.



2 HOLES DR ϕ C'BORE FOR M12 CAP SCREW.

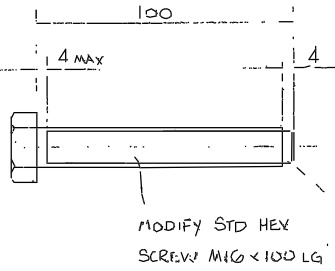


87			TITLE PACKER		
MATERIAL ALUM ALLOY	SCALE 1/1	TOLERANCES X ± 1 XX ± 0.2 XXX ± 0.1			
FINISH	NO REQ PER UNIT 4				
C.A. No W/FX/350 SHT.1	DRAWING No. R.G.O. W/FX/437				

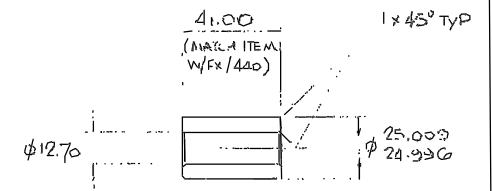
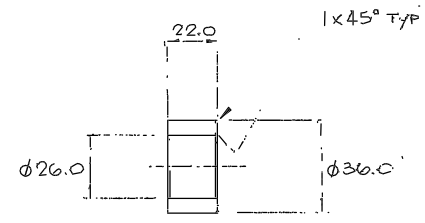
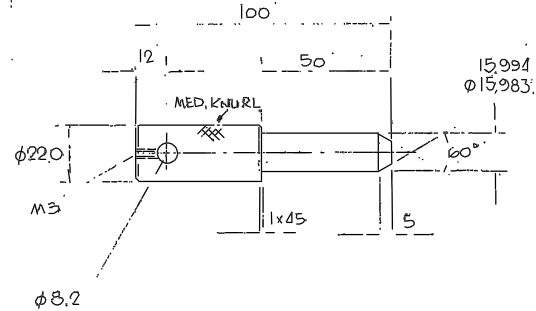
88			TITLE LOCATOR		
MATERIAL MS	SCALE 1/1	TOLERANCES X ± 1 XX ± 0.2 XXX ± 0.1			
FINISH	NO REQ PER UNIT 4				
C.A. No W/FX/350 SHT.1	DRAWING No. R.G.O. W/FX/438				

89			TITLE BUSH BLOCK		
MATERIAL MS	SCALE 1/1	TOLERANCES X ± 1 XX ± 0.2 XXX ± 0.1			
FINISH	NO REQ PER UNIT 2				
C.A. No W/FX/350 SHT.1	DRAWING No. R.G.O. W/FX/439				

90			TITLE BLOCK		
MATERIAL MS	SCALE 1/1	TOLERANCES X ± 1 XX ± 0.2 XXX ± 0.1			
FINISH	NO REQ PER UNIT 4				
C.A. No W/FX/350 SHT.1	DRAWING No. R.G.O. W/FX/440				



MODIFY STD HEX SCREW M16 x 100 LG



91			TITLE SCREW		
MATERIAL MOD STD SCR	SCALE 1/1	TOLERANCES X ± 1 XX ± 0.2 XXX ± 0.1			
FINISH	NO REQ PER UNIT 4				
C.A. No W/FX/350 SHT.1	DRAWING No. R.G.O. W/FX/441				

92			TITLE JIG PIN		
MATERIAL SILVER STL	SCALE 1/1	TOLERANCES X ± 1 XX ± 0.2 XXX ± 0.1			
FINISH	NO REQ PER UNIT 2				
C.A. No W/FX/350 SHT.1	DRAWING No. R.G.O. W/FX/442				

93			TITLE SPACER		
MATERIAL ALUM ALLOY	SCALE 1/1	TOLERANCES X ± 1 XX ± 0.2 XXX ± 0.1			
FINISH	NO REQ PER UNIT 4				
C.A. No W/FX/350 SHT.1	DRAWING No. R.G.O. W/FX/443				

94			TITLE LINER		
MATERIAL MS	SCALE 1/1	TOLERANCES X ± 1 XX ± 0.2 XXX ± 0.1			
FINISH	NO REQ PER UNIT 4				
C.A. No W/FX/350 SHT.1	DRAWING No. R.G.O. W/FX/444				

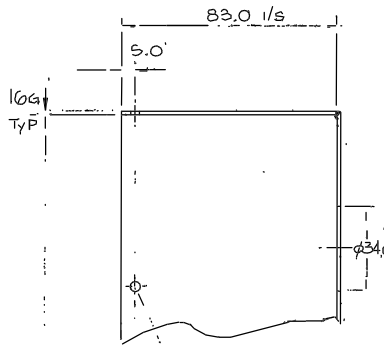
Tolerances (Unless otherwise stated)						Material		Scale		THIRD ANGLE PROJECTION		Drawing No.	
X ± 1						Finish		ROYAL GREENWICH OBSERVATORY, HERSTMONCEUX CASTLE HAILSHAM		Title		437	
XX ± 0.2								Drg. No.		DETAIL		To	
XXX ± 0.1								No. Req.				444	
Issue						Mod. No.		Date		Drawn By		Issue	
Nov 87						PROMEC							
Date						Date		Date		Date		Date	
Drawn By						Drawn By		Drawn By		Drawn By		Drawn By	
Useful on						Useful on		Useful on		Useful on		Useful on	

Drawing No. 432
 W/FX/430

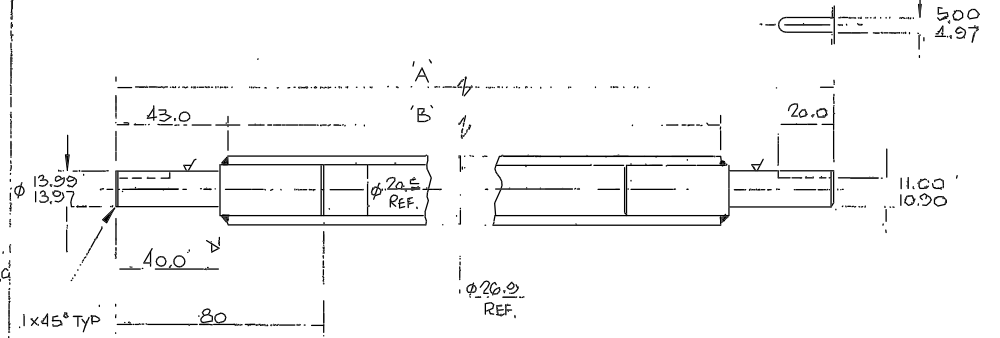


WELDED ASSY.

PRIME & PAINT TO RGO SPEC.



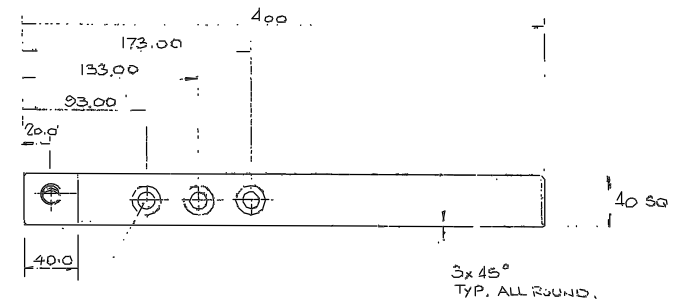
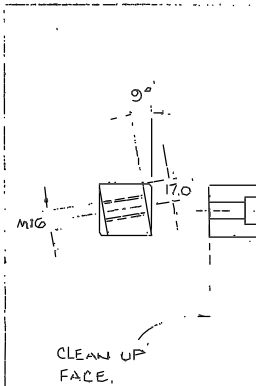
10 HOLES ϕ 3.2
 EQUI-SPACED,
 (93.4 PITCH).



	A	B
83	565	479
84	282	196
85	218	132

WELDED ASSY.
 PRIME & PAINT TO RGO SPEC

TITLE		
83	84	85
SHAFT		
MATERIAL	SCALE	TOLERANCES
M.S. FAB	1/1	R. \pm 1
FINISH	NO. REQ. PER UNIT	XX \pm 0.2
SEE NOTE	1	XXX \pm 0.1
S.A. No.	DRAWING No.	
W/FX/350 SHTS	R.G.O. W/FX/433 4/5	



3 HOLES DR &
 C'BORE FOR M12
 CAP SCREW.

TITLE		
82	COVER	
MATERIAL	SCALE	TOLERANCES
M.S. FAB	1/1	X. \pm 1
FINISH	NO. REQ. PER UNIT	XX \pm 0.2
SEE NOTE	1	XXX \pm 0.1
S.A. No.	DRAWING No.	
W/FX/350 SHTS	R.G.O. W/FX/432	

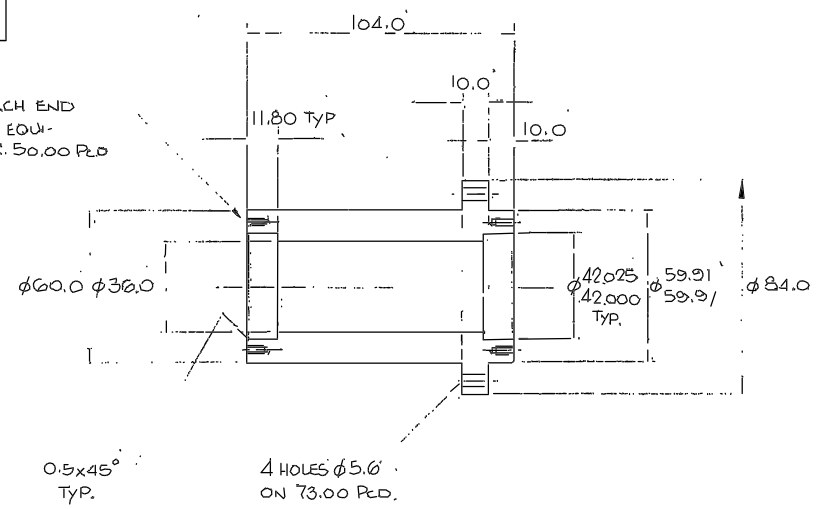
TITLE		
86	GUIDE POST	
MATERIAL	SCALE	TOLERANCES
B.M.S	1/2	R. \pm 1
FINISH	NO. REQ. PER UNIT	XX \pm 0.2
SEE NOTE	4	XXX \pm 0.1
S.A. No.	DRAWING No.	
W/FX/350 SHTS	R.G.O. W/FX/436	

THIRD ANGLE PROJECTION									
Tolerances (inches unless otherwise stated)					Material		Dimms in m.m.		Scale
					Finish		ROYAL GREENWICH OBSERVATORY, HERSTMONCEUX CASTLE, HAILSHAM SUSSEX.		Title
Issue	Mod. No.	Date	Drawn By	Issue	Mod. No.	Date	Drawn By	Used on	Drawing No.
									432
									W/FX/430

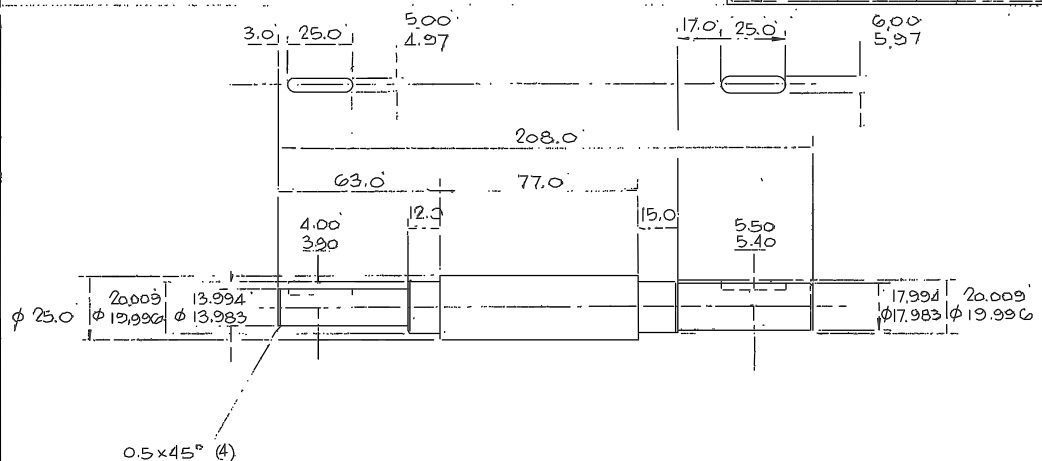
DETAIL

Drawing No. 429
 To 431
 W/FX/431

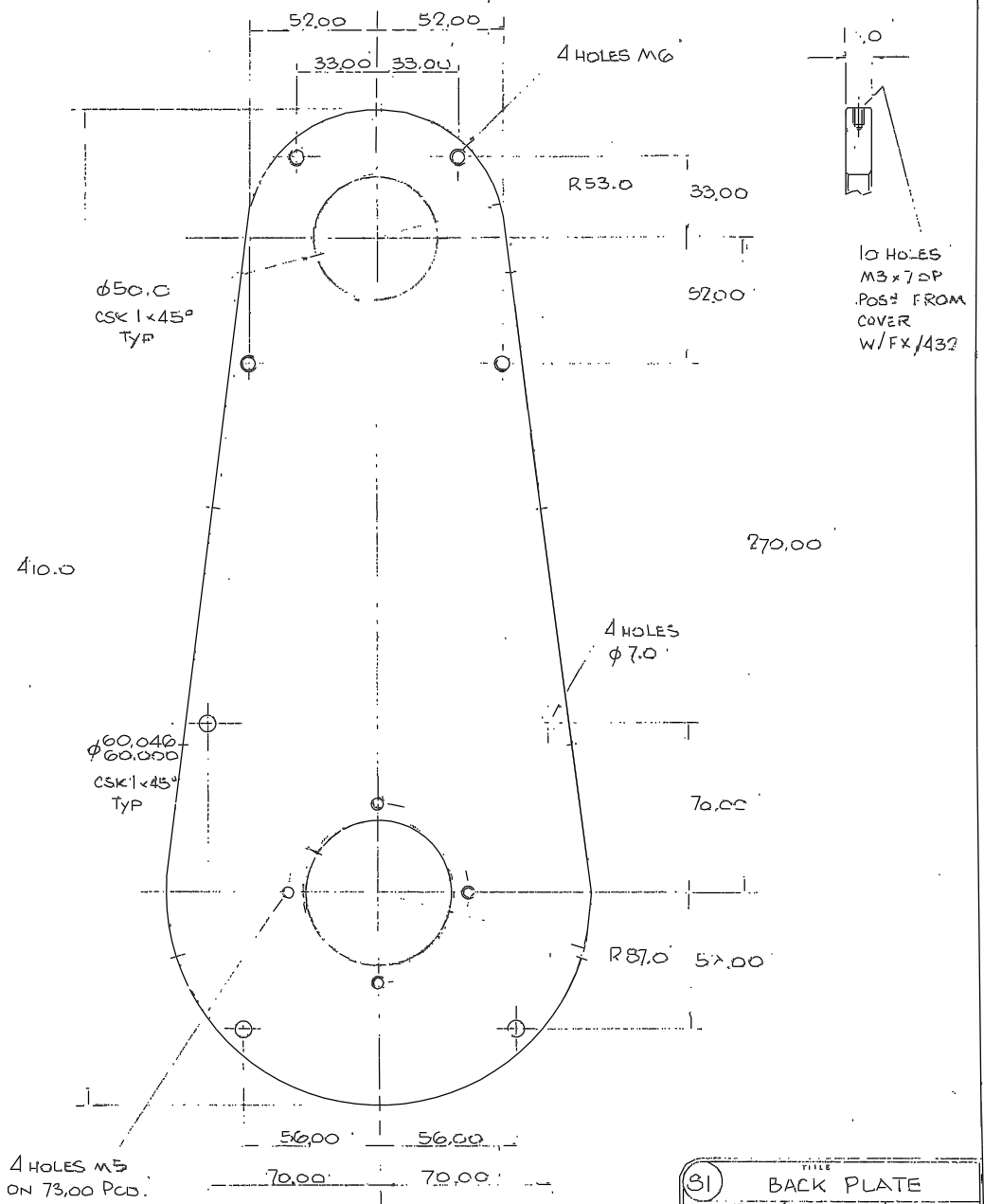
4 HOLES EACH END
 M3 x 7 DP EQU-
 SPACED ON 50.00 PCD



79		TITLE BRG. HSG.	
MATERIAL ALUM. ALLOY	SCALE 1/1	TOLERANCES A. ±1 K.X ±0.2 A.XX ±0.1	
FINISH	NO. REQD. PER UNIT 1		
G.A. No. W/FX/350 SHTS	DRAWING No. R.G.O. W/FX/429		



80		TITLE SPINDLE	
MATERIAL EN8	SCALE 1/1	TOLERANCES K. ±1 K.X ±0.2 A.XX ±0.1	
FINISH	NO. REQD. PER UNIT 1		
G.A. No. W/FX/350 SHTS	DRAWING No. R.G.O. W/FX/430		



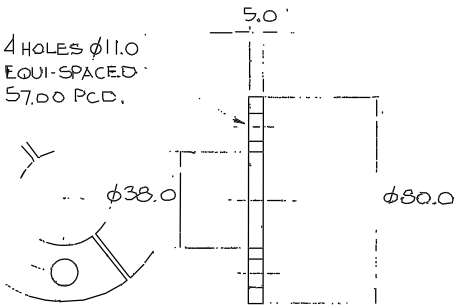
10 HOLES
 M3 x 7 DP
 POS'D FROM
 COVER
 W/FX/432

81		TITLE BACK PLATE	
MATERIAL ALUM. ALLOY	SCALE 1/1	TOLERANCES K. ±1 K.X ±0.2 A.XX ±0.1	
FINISH	NO. REQD. PER UNIT 1		
G.A. No. W/FX/350 SHTS	DRAWING No. R.G.O. W/FX/431		

				Tolerances (Unless otherwise stated)				Material		Dim's in mm.		Scale		THIRD ANGLE PROJECTION		G.A. No.	
				✓ .2 XX .1 XXX .05				Finish		ROYAL GREENWICH OBSERVATORY, HERSTMONCEUX CASTLE, HAILSHAM SUSSEX.		Title		DETAIL Drawing No. 429 W/FX/431		Drawing No. 429 To 431 W/FX/431	
Issue	Mod. No.	Date	Drawn By	Issue	Mod. No.	Date	Drawn By	Material	Finish	Dim's in mm.	Scale	THIRD ANGLE PROJECTION	G.A. No.	Issue	Mod. No.	Date	Drawn By

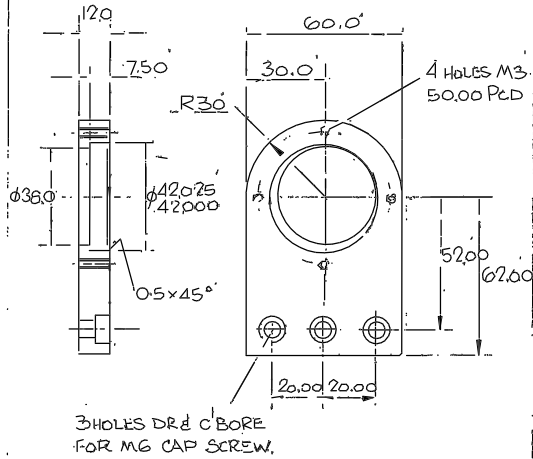
Drawing No. 423
W/FX/428

4 HOLES $\phi 11.0$
EQUI-SPACED
57.00 P.C.D.



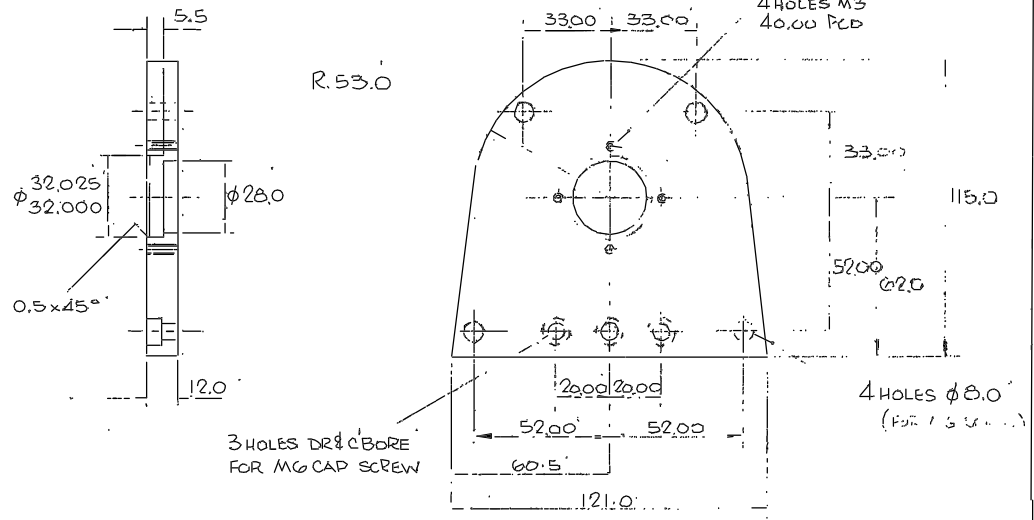
NOTE-SPLIT INTO TWO,
HALVES.

73 TITLE PACKER		
MATERIAL ALUM ALLOY	SCALE 1/1	TOLERANCES X ± 1 XX ± 0.2 XXX ± 0.1
FINISH	NO REQS PER UNIT 3	
G.A. No. W/FX/350 SHES	R.G.O.	DRAWING No. W/FX/423



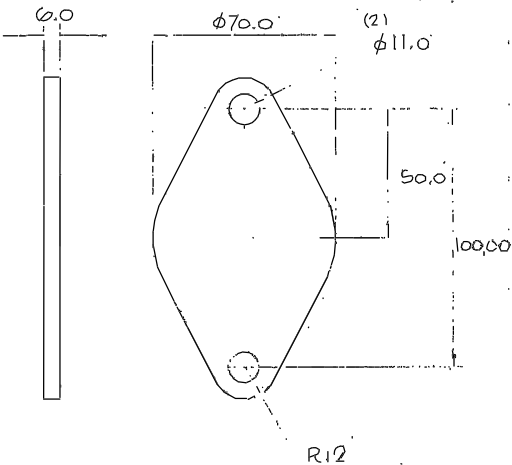
3 HOLES DR $\frac{1}{2}$ C BORE
FOR M6 CAP SCREW.

74 TITLE BRG PLATE		
MATERIAL ALUM ALLOY	SCALE 1/1	TOLERANCES X ± 1 XX ± 0.2 XXX ± 0.1
FINISH	NO REQS PER UNIT 1	
G.A. No. W/FX/350 SHES	R.G.O.	DRAWING No. W/FX/424

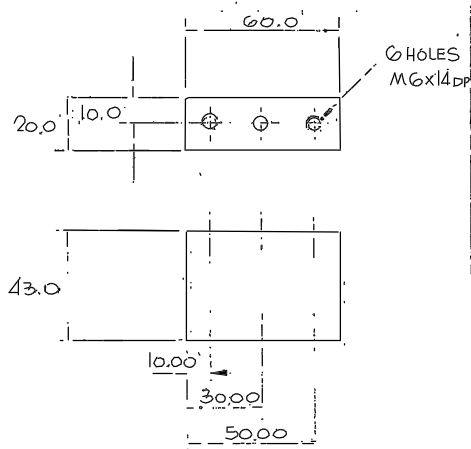


3 HOLES DR $\frac{1}{2}$ C BORE
FOR M6 CAP SCREW

75 TITLE BRG PLATE		
MATERIAL ALUM ALLOY	SCALE 1/1	TOLERANCES X ± 1 XX ± 0.2 XXX ± 0.1
FINISH	NO REQS PER UNIT 1	
G.A. No. W/FX/350 SHES	R.G.O.	DRAWING No. W/FX/425

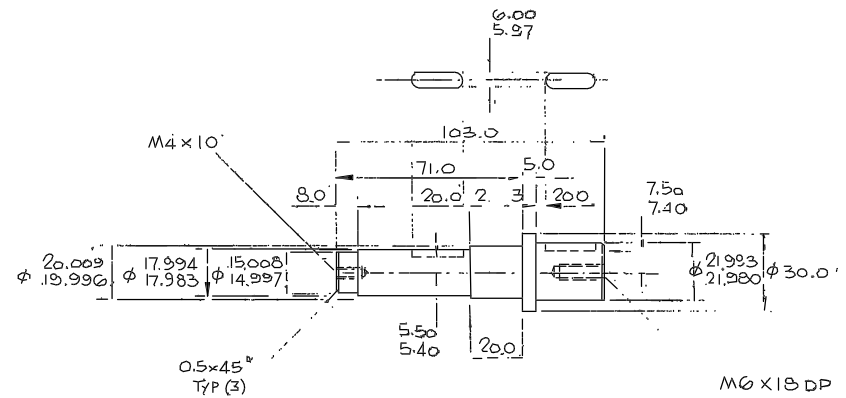


76 TITLE PACKER		
MATERIAL ALUM ALLOY	SCALE 1/1	TOLERANCES X ± 1 XX ± 0.2 XXX ± 0.1
FINISH	NO REQS PER UNIT 3	
G.A. No. W/FX/350 SHES	R.G.O.	DRAWING No. W/FX/426



3 HOLES
M6x14 DP

77 TITLE BLOCK		
MATERIAL ALUM ALLOY	SCALE 1/1	TOLERANCES X ± 1 XX ± 0.2 XXX ± 0.1
FINISH	NO REQS PER UNIT 1	
G.A. No. W/FX/350 SHES	R.G.O.	DRAWING No. W/FX/427



M6 x 18 DP

78 TITLE SPINDLE		
MATERIAL EN 8	SCALE 1/1	TOLERANCES X ± 1 XX ± 0.2 XXX ± 0.1
FINISH	NO REQS PER UNIT 1	
G.A. No. W/FX/350 SHES	R.G.O.	DRAWING No. W/FX/428

Issue	Mod. No.	Date	Drawn By	Issue	Mod. No.	Date	Drawn By
			Nov 87	PR&MEC			

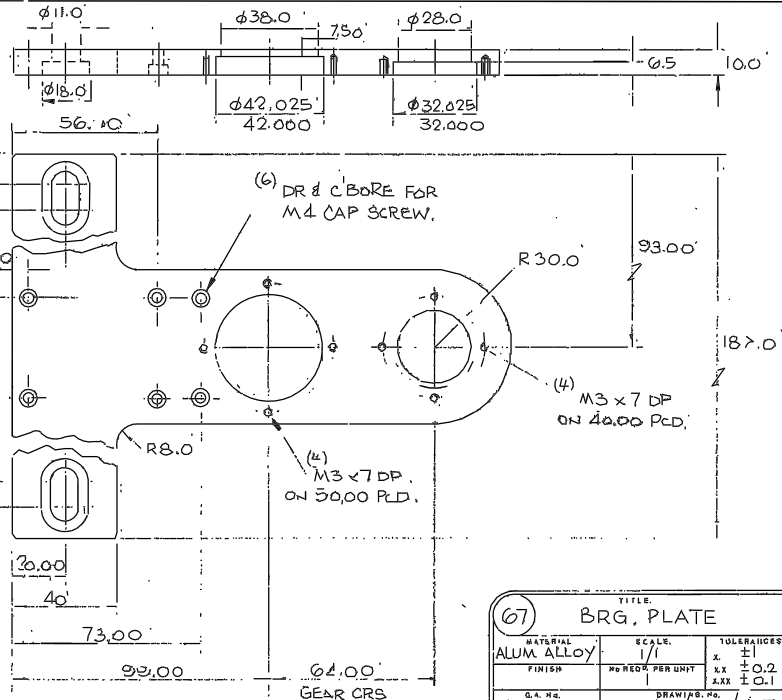
Tolerances (Unless otherwise stated)
X ± 1
XX ± 0.2
XXX ± 0.1

Material	Dimms in n.m.	Scale
Finish	Drq. No.	No. Req.
	Used on	

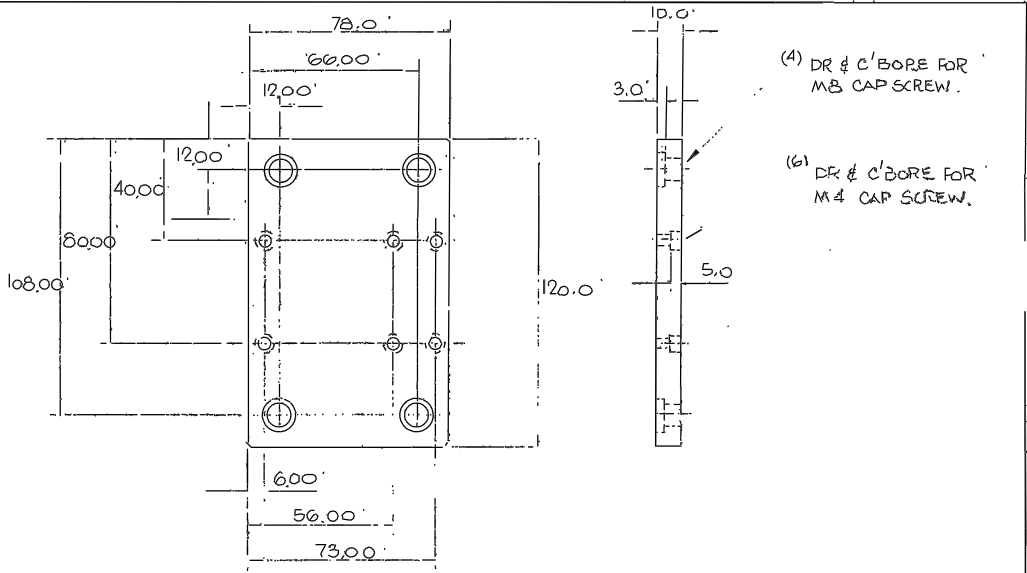
ROYAL GREENWICH OBSERVATORY,
HERSTMONCEUX CASTLE,
HAILSHAM
SUSSEX.

THIRD ANGLE PROJECTION
DETAIL
Drawing No. 423
TO
W/FX/428

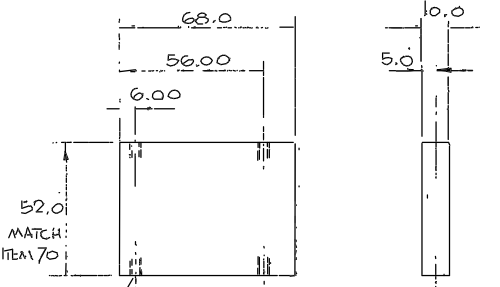
Drawing No. 417
W/FX/422



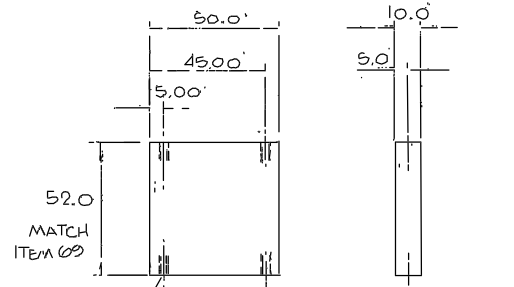
67			TITLE		
BRG. PLATE					
MATERIAL	SCALE	TOLERANCES			
ALUM ALLOY	1/1	X ± 1			
FINISH	NO REQS PER UNIT	XX ± 0.2			
		XXX ± 0.1			
G.A. No.	DRAWING No.				
W/FX/350 SH/4	R.G.O. W/FX/417				



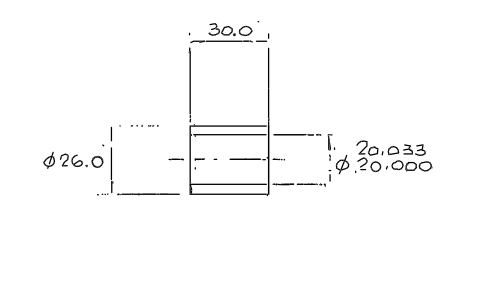
68			TITLE		
BASE PLATE					
MATERIAL	SCALE	TOLERANCES			
ALUM ALLOY	1/1	X ± 1			
FINISH	NO REQS PER UNIT	XX ± 0.2			
		XXX ± 0.1			
G.A. No.	DRAWING No.				
W/FX/350 SH/4	R.G.O. W/FX/418				



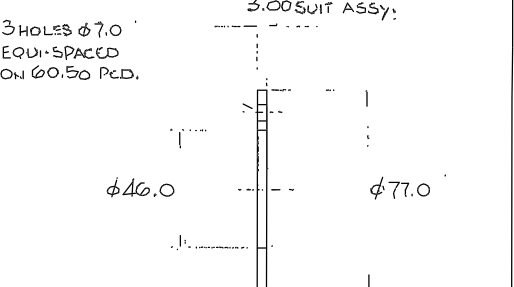
69			TITLE		
PLATE					
MATERIAL	SCALE	TOLERANCES			
ALUM ALLOY	1/1	X ± 1			
FINISH	NO REQS PER UNIT	XX ± 0.2			
		XXX ± 0.1			
G.A. No.	DRAWING No.				
W/FX/350 SH/4	R.G.O. W/FX/419				



70			TITLE		
PLATE					
MATERIAL	SCALE	TOLERANCES			
ALUM ALLOY	1/1	X ± 1			
FINISH	NO REQS PER UNIT	XX ± 0.1			
		XXX ± 0.1			
G.A. No.	DRAWING No.				
W/FX/350 SH/4	R.G.O. W/FX/420				



71			TITLE		
IDLER					
MATERIAL	SCALE	TOLERANCES			
PHOS BRZ	1/1	X ± 1			
FINISH	NO REQS PER UNIT	XX ± 0.2			
		XXX ± 0.1			
G.A. No.	DRAWING No.				
W/FX/350 SH/5	R.G.O. W/FX/421				

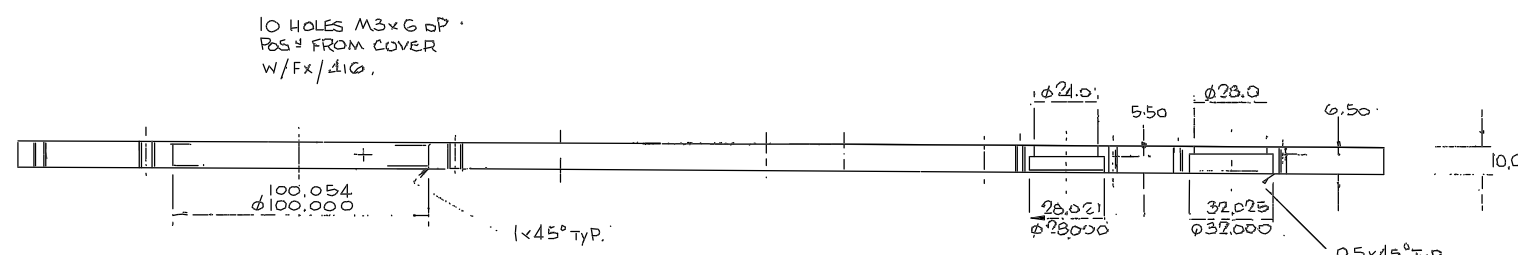
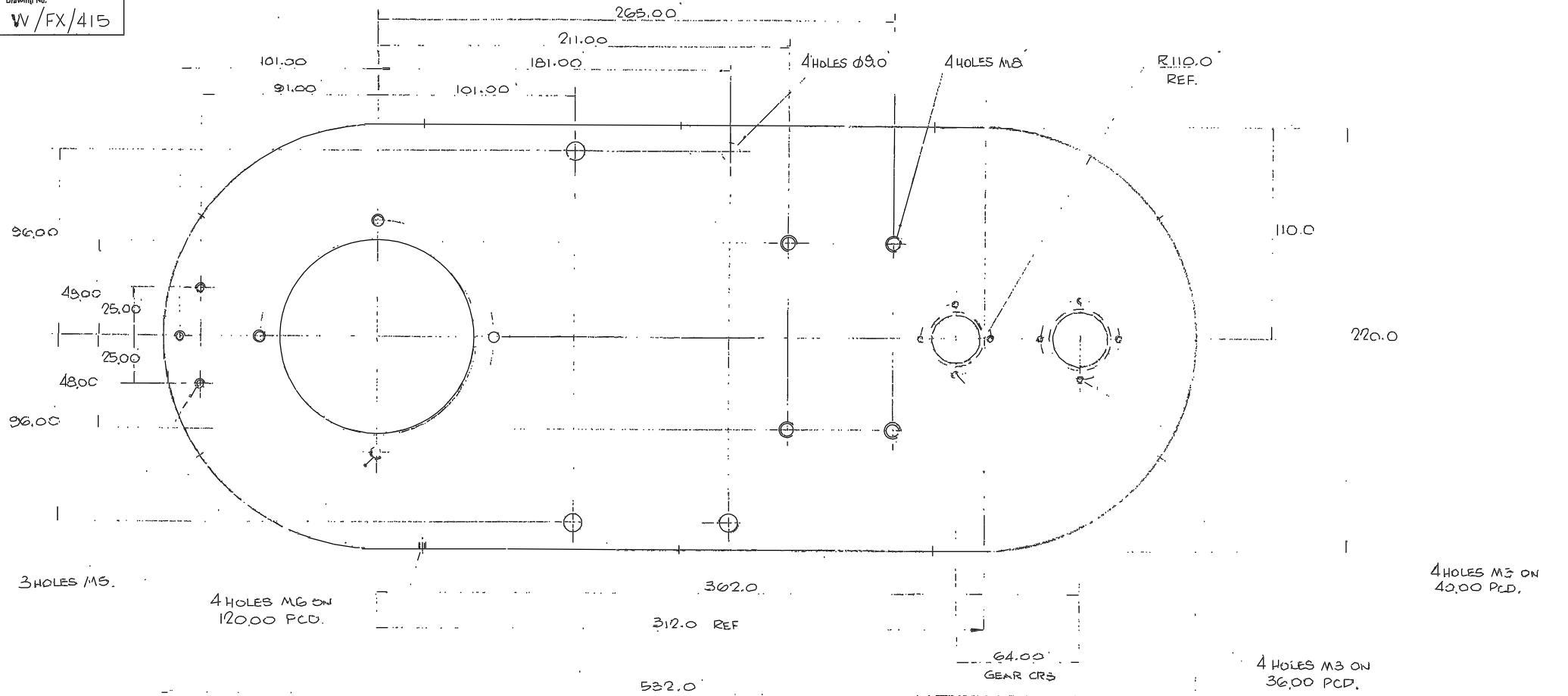


72			TITLE		
PACKER					
MATERIAL	SCALE	TOLERANCES			
M.S.	1/1	X ± 1			
FINISH	NO REQS PER UNIT	XX ± 0.2			
		XXX ± 0.1			
G.A. No.	DRAWING No.				
W/FX/350 SH/5	R.G.O. W/FX/422				

OR USE OILITE
CM 32x30

Tolerances (Unless otherwise stated)				Material		Dimens in m.m.		Scale		THIRD ANGLE PROJECTION		G.A. No.	
X	±											Drawing No. 417	
XX	±	0.1										TO	
XXX	±	0.1										W/FX/422	
Issue	Mod. No.	Date	Drawn By	Issue	Mod. No.	Date	Drawn By	Dep. No.	No. Req.	Title		R.G.O.	
										ROYAL GREENWICH OBSERVATORY, HERSTMONCEUX CASTLE, HAILSHAM SUSSEX.			
										DETAIL			

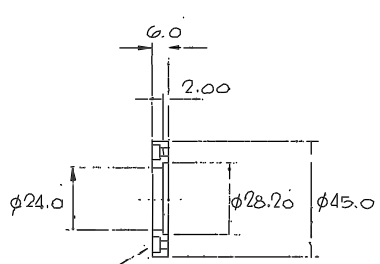
Drawing No.
W/FX/415



05		TITLE	
BACK PLATE			
MATERIAL	SCALE	TOLERANCES	
ALUM ALLOY	1/1	X	±1
FINISH	NO REQ PER UNIT	XX	±0.2
G.A. NO	DRAWING NO	XXX	±0.1
W/FX350 SHT 4	R.G.O.	W/FX/415	

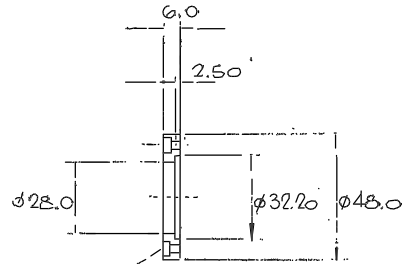
				Tolerances (Unless otherwise stated)				Material		Dims in num.		Scale		THIRD ANGLE PROJECTION		Title	
				X X t				Finish		ROYAL GREENWICH OBSERVATORY, HERSTMONCEUX CASTLE, HAILSHAM		1/1		DETAIL		G.A. No.	
				XX t				Drawn By		No. Req.		R.G.O.		W/FX/415		Drawing No.	
				XXX t				Used on								W/FX/415	
Issue	Mod. No.	Date	Drawn By	Issue	Mod. No.	Date	Drawn By										

Drawing No. 407
W/FX/414



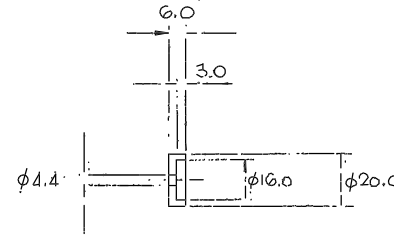
4 HOLES DR & C BORE
FOR M3 SCREW EQUI-
SPACED ON 30.00 PCD.

57 BRG CAP			
MATERIAL	SCALE	TOLERANCES	
ALUM ALLOY	1/1	X ±1	
FINISH	NO REQ PER UNIT	XX ±0.2	
		XXX ±0.1	
G.A. No.	DRAWING No.		
W/FX/350 SHT.4	R.G.O. W/FX/407		

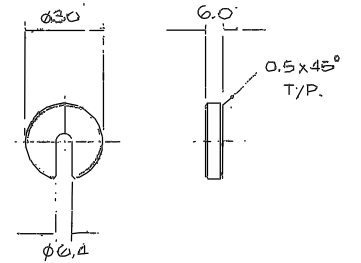


4 HOLES DR & C BORE
FOR M3 SCREW EQUI-
SPACED ON 40.00 PCD.

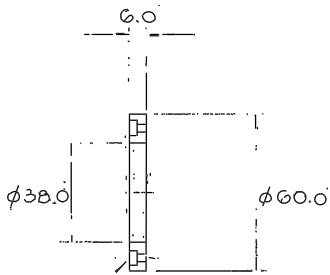
58 BRG CAP			
MATERIAL	SCALE	TOLERANCES	
ALUM ALLOY	1/1	X ±1	
FINISH	NO REQ PER UNIT	XX ±0.2	
		XXX ±0.1	
G.A. No.	DRAWING No.		
W/FX/350 SHT.4	R.G.O. W/FX/408		



59 BRG CAP			
MATERIAL	SCALE	TOLERANCES	
ALUM ALLOY	1/1	X ±1	
FINISH	NO REQ PER UNIT	XX ±0.2	
		XXX ±0.1	
G.A. No.	DRAWING No.		
W/FX/350 SHT.4	R.G.O. W/FX/409		

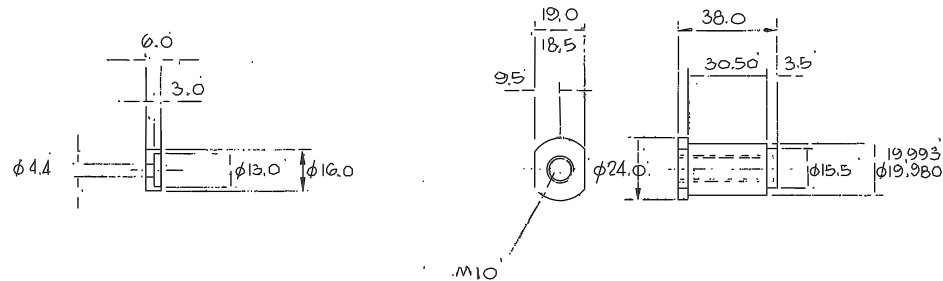


60 C WASHER			
MATERIAL	SCALE	TOLERANCES	
ALUM ALLOY	1/1	X ±1	
FINISH	NO REQ PER UNIT	XX ±0.2	
		XXX ±0.1	
G.A. No.	DRAWING No.		
W/FX/350 SHT.4	R.G.O. W/FX/410		



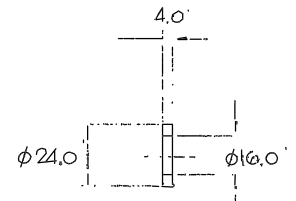
4 HOLES DR & C BORE
FOR M3 SCREW EQUI-
SPACED ON 50.00 PCD.

61 BRG CAP			
MATERIAL	SCALE	TOLERANCES	
ALUM ALLOY	1/1	X ±1	
FINISH	NO REQ PER UNIT	XX ±0.2	
		XXX ±0.1	
G.A. No.	DRAWING No.		
W/FX/350 SHT.4	R.G.O. W/FX/411		



62 BRG CAP			
MATERIAL	SCALE	TOLERANCES	
ALUM ALLOY	1/1	X ±1	
FINISH	NO REQ PER UNIT	XX ±0.2	
		XXX ±0.1	
G.A. No.	DRAWING No.		
W/FX/350 SHT.4	R.G.O. W/FX/412		

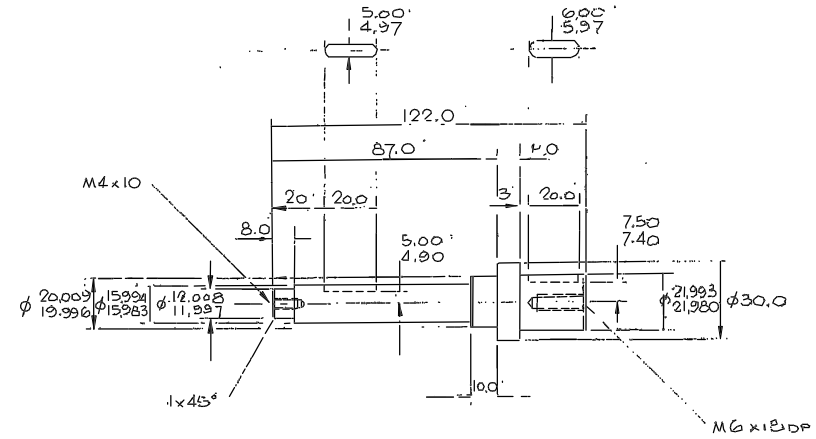
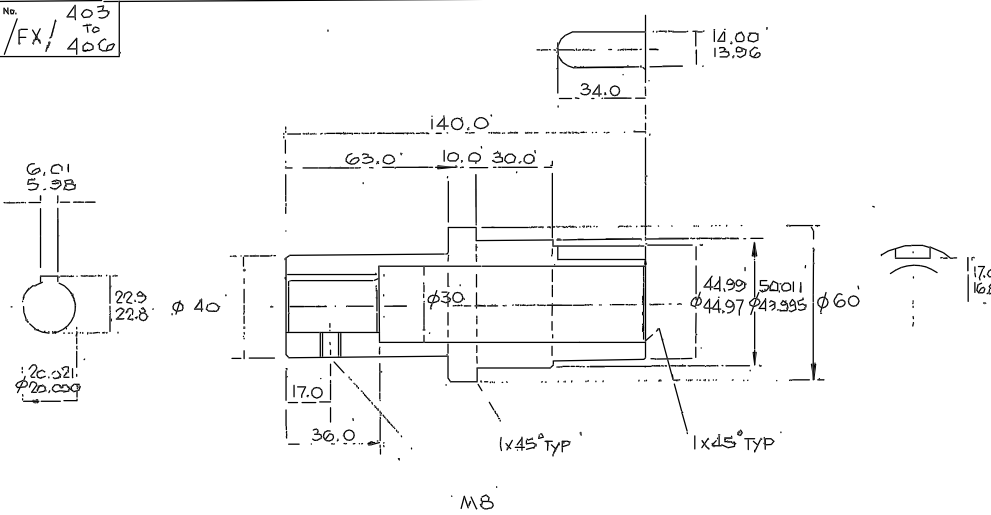
63 IDLER SHAFT			
MATERIAL	SCALE	TOLERANCES	
SIL STL	1/1	X ±1	
FINISH	NO REQ PER UNIT	XX ±0.2	
		XXX ±0.1	
G.A. No.	DRAWING No.		
W/FX/350 SHT.4	R.G.O. W/FX/413		



64 SPACER			
MATERIAL	SCALE	TOLERANCES	
SIL STL	1/1	X ±1	
FINISH	NO REQ PER UNIT	XX ±0.2	
		XXX ±0.1	
G.A. No.	DRAWING No.		
W/FX/350 SHT.4	R.G.O. W/FX/414		

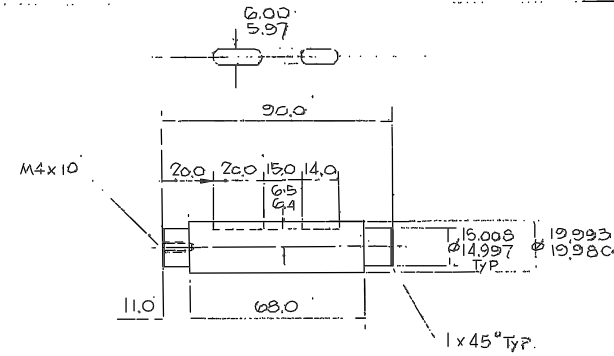
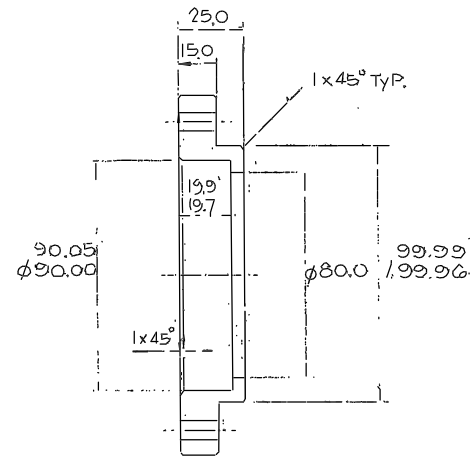
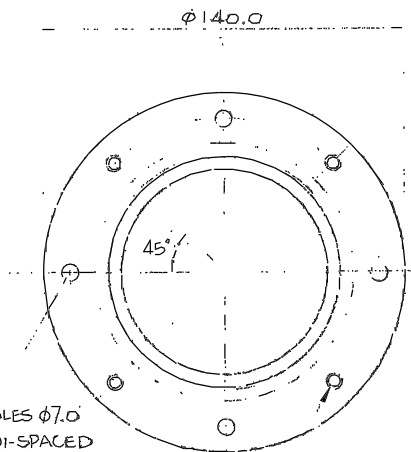
										Tolerances (Unless otherwise stated)	Material	Dimms in m.m.		Scale	THIRD ANGLE PROJECTION			G.A. No.
										X ±	Finish	R.D.Y. GREENWICH OBSERVATORY, HERSTMONCEUX CASTLE, HAILSHAM			DETAIL			Drawing No.
										XX ±		Drg. No.						W/FX/407
										XXX ±		Used on						TD
Issue	Mod. No.	Date	Drawn By	Issue	Mod. No.	Date	Drawn By											414

Drawing No. 403
W/FX/406
To



53 SHAFT			
MATERIAL	SCALE	TOLERANCES	
EN8	1/1	x ±1	xx ±0.2
FINISH	NO REQ PER UNIT	xxx ±0.1	
G.A. No	DRAWING No		
V/FX/350 SHT.4	R.G.O. W/FX/403		

54 SPINDLE			
MATERIAL	SCALE	TOLERANCES	
EN8	1/1	x ±1	xx ±0.2
FINISH	NO REQ PER UNIT	xxx ±0.1	
G.A. No	DRAWING No		
V/FX/350 SHT.4	R.G.O. W/FX/404		



55 BRG HOUSING			
MATERIAL	SCALE	TOLERANCES	
ALUM ALLOY	1/1	x ±1	xx ±0.2
FINISH	NO REQ PER UNIT	xxx ±0.1	
G.A. No	DRAWING No		
V/FX/350 SHT.4	R.G.O. W/FX/405		

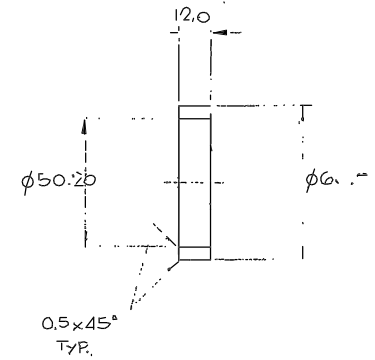
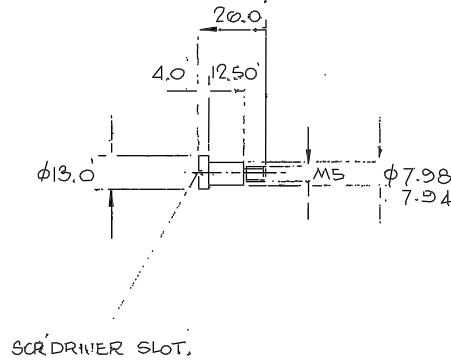
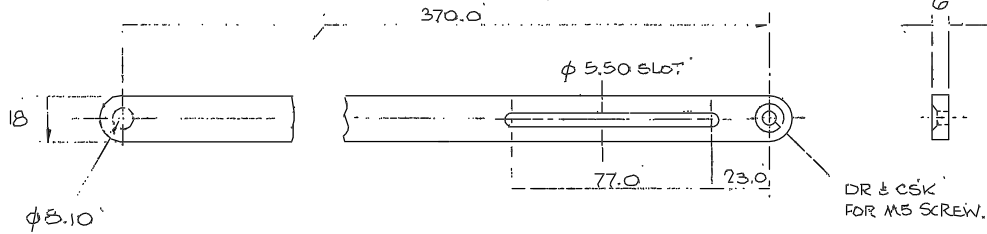
56 SPINDLE			
MATERIAL	SCALE	TOLERANCES	
EN8	1/1	x ±1	xx ±0.2
FINISH	NO REQ PER UNIT	xxx ±0.1	
G.A. No	DRAWING No		
V/FX/350 SHT.4	R.G.O. W/FX/406		

4 HOLES 7.0
EQUI-SPACED
ON 120.00 P.C.D.

4 HOLES M6 THRO'
EQUI-SPACED - N
120.00 P.C.D.

Tolerances (Unless otherwise stated)						Material		Dim's in m.m.		Scale		THIRD ANGLE PROJECTION		G.A. No.	
X ±						Finish		ROYAL GREENWICH OBSERVATORY, HERSTMONCEUX CASTLE, HAILSHAM		Title		DETAIL		Drawing No.	
XX ±						Used on		SUSSEX.				W/FX/403 TO 406			
XXX ±															

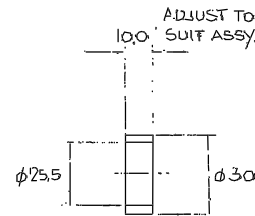
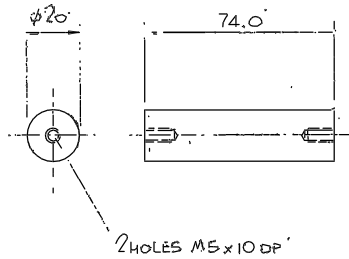
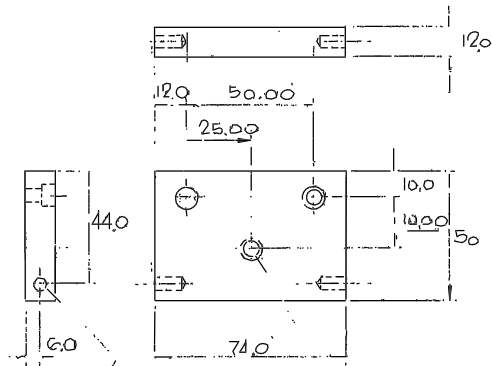
Drawing No. 396
To
W/FX/402



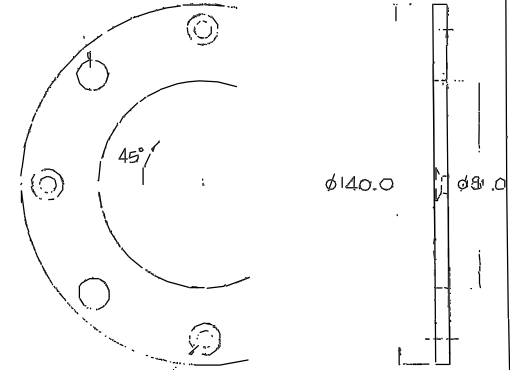
TITLE			TOLERANCES		
46	BAR		x	±1	
MATERIAL	SCALE		xx	±0.2	
ALUM. ALLOY	1/1		xxx	±0.1	
FINISH	NO REQ. PER UNIT				
	2				
G.A. No.	DRAWING No.				
W/FX/350 SHT.4	R.G.O. W/FX/396				

TITLE			TOLERANCES		
47	SHOULDER SCREW		x	±1	
MATERIAL	SCALE		xx	±0.2	
SIL. STEEL	1/1		xxx	±0.1	
FINISH	NO REQ. PER UNIT				
	2				
G.A. No.	DRAWING No.				
W/FX/350 SHT.4	R.G.O. W/FX/397				

TITLE			TOLERANCES		
48	SPACER		x	±1	
MATERIAL	SCALE		xx	±0.2	
ALUM. ALLOY	1/1		xxx	±0.1	
FINISH	NO REQ. PER UNIT				
	2				
G.A. No.	DRAWING No.				
W/FX/350 SHT.4	R.G.O. W/FX/398				



(4) Ø12.0 EQUI-SPACED ON 120.00 PCD.



2 HOLES Ø5.0 x 10 DP-DRIFT FOR DOWELS.

TITLE			TOLERANCES		
49	BLOCK		x	±1	
MATERIAL	SCALE		xx	±0.2	
ALUM. ALLOY	1/1		xxx	±0.1	
FINISH	NO REQ. PER UNIT				
	1				
G.A. No.	DRAWING No.				
W/FX/350 SHT.4	R.G.O. W/FX/399				

TITLE			TOLERANCES		
50	BAR		x	±1	
MATERIAL	SCALE		xx	±0.2	
ALUM. ALLOY	1/1		xxx	±0.1	
FINISH	NO REQ. PER UNIT				
	2				
G.A. No.	DRAWING No.				
W/FX/350 SHT.4	R.G.O. W/FX/400				

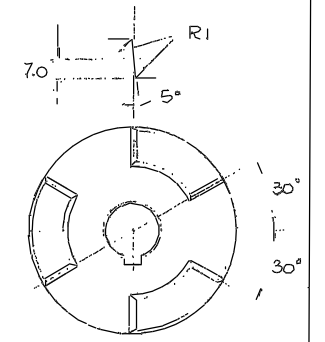
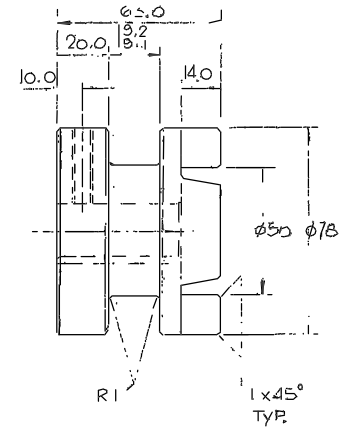
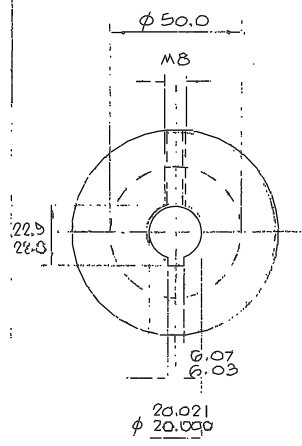
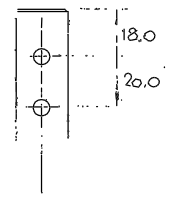
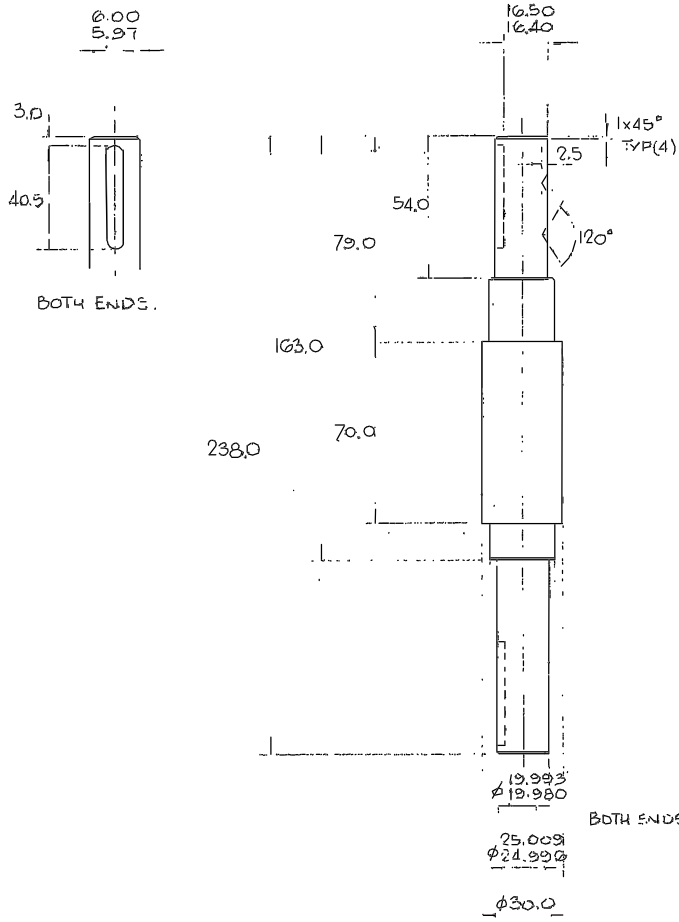
TITLE			TOLERANCES		
51	SPACER		x	±1	
MATERIAL	SCALE		xx	±0.2	
ALUM. ALLOY	1/1		xxx	±0.1	
FINISH	NO REQ. PER UNIT				
	1				
G.A. No.	DRAWING No.				
W/FX/350 SHT.4	R.G.O. W/FX/401				

(4) DR & CSK FOR M6 SCREW EQUI-SPACED ON 120.0 PCD.

TITLE			TOLERANCES		
52	RING		x	±1	
MATERIAL	SCALE		xx	±0.2	
ALUM. ALLOY	1/1		xxx	±0.1	
FINISH	NO REQ. PER UNIT				
	1				
G.A. No.	DRAWING No.				
W/FX/350 SHT.4	R.G.O. W/FX/402				

Material						Dimms in m.m.		Scale	Title		G.A. No.	
Material						Dimms in m.m.		Scale	Title		G.A. No.	
Finish						No. Req.			THIRD ANGLE PROJECTION		Drawing No. 396	
Used on									DETAIL		W/FX/402	
ROYAL GREENWICH OBSERVATORY, HERSTMONCEUX CASTLE, HAILSHAM									SUSSEX		TD	

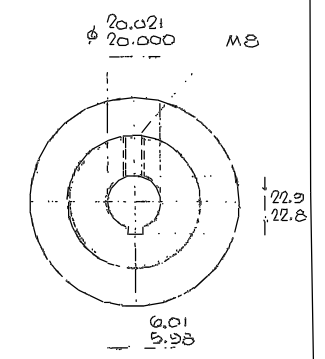
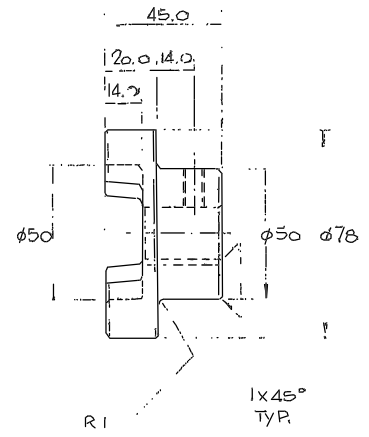
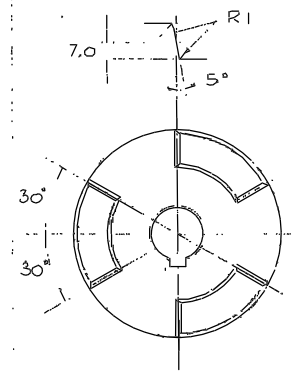
Drawing No. 393
W/FX/395



BACKLASH IN ASSY PERMISSIBLE BUT KEEP TO A MINIMUM.

44 SLIDING DOG CLUTCH			
MATERIAL	SCALE	TOLERANCES	
ENB	1/1	X	± 1
FINISH	NO REQ PER UNIT	XX	± 0.2
		XXX	± 0.1
G.A. No. W/FX/350 SHT. 4 R.G.O. W/FX/394			

FLAME HARDEN TEETH
M/C WITH W/FX/395



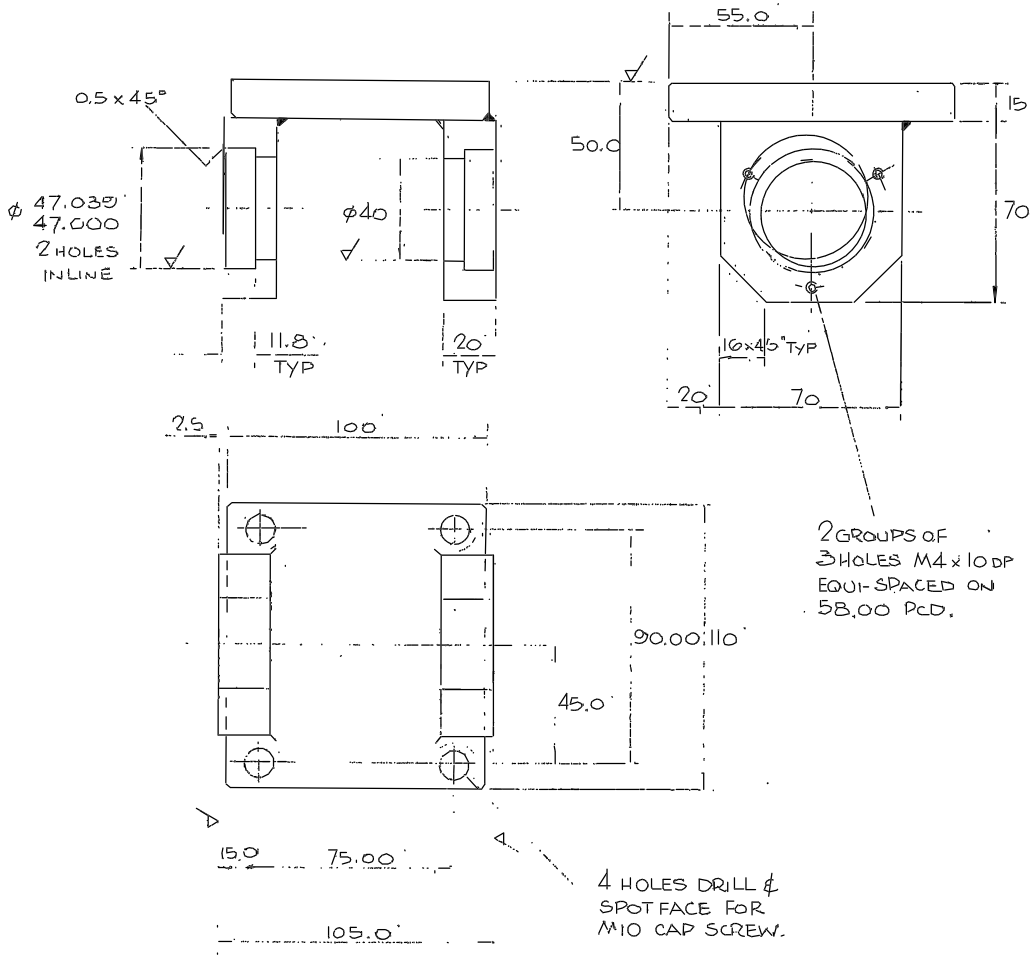
FLAME HARDEN TEETH
M/C WITH W/FX/394

43 CLUTCH SHAFT			
MATERIAL	SCALE	TOLERANCES	
ENB	1/1	X	± 1
FINISH	NO REQ PER UNIT	XX	± 0.2
		XXX	± 0.1
G.A. No. W/FX/350 SHT. 4 R.G.O. W/FX/393			

45 FIXED DOG CLUTCH			
MATERIAL	SCALE	TOLERANCES	
ENB	1/1	X	± 1
FINISH	NO REQ PER UNIT	XX	± 0.2
		XXX	± 0.1
G.A. No. W/FX/350 SHT. 4 R.G.O. W/FX/395			

THIRD ANGLE PROJECTION									
DETAIL									
ROYAL GREENWICH OBSERVATORY, HERSTMONCEUX CASTLE, HAILSHAM SUSSEX									
G.A. No. W/FX/393									
Drawing No. W/FX/395									

Drawing No. 390
 W / FX / 392



2 GROUPS OF 3 HOLES M4 x 10 DP EQUI-SPACED ON 58.00 PCD.

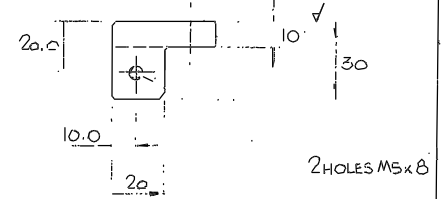
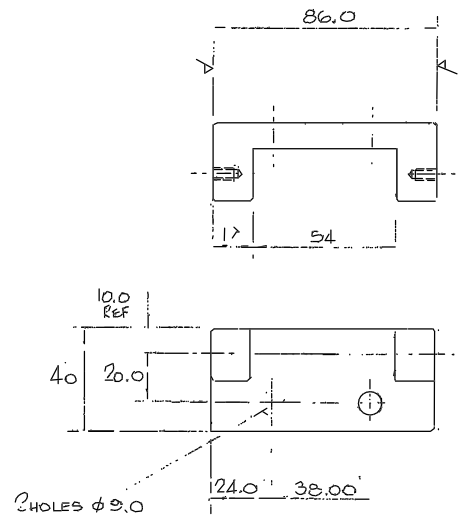
WELD

40		TITLE BRG. BLOCK	
MATERIAL MS FAB	SCALE 1/1	TOLERANCES X \pm XX \pm 0.2 XXX \pm 0.1	
FINISH	NO RECD PER UNIT		
G.A. No. W/FX/350 SHT 4	R.G.D.	DRAWING No. W / FX / 390	

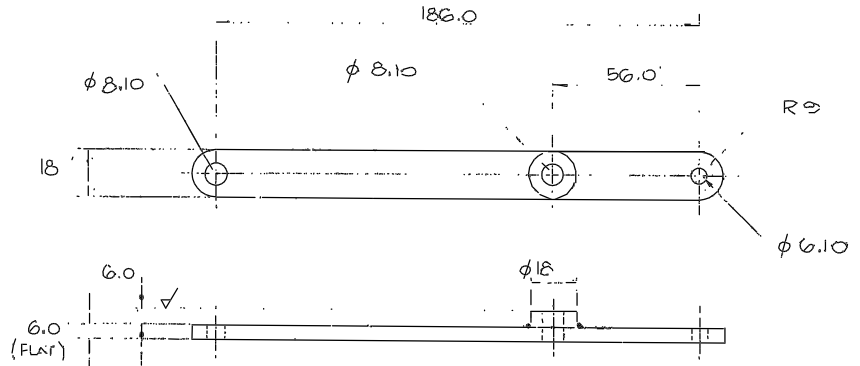
Issue	Mod. No.	Date	Drawn By	Issue	Mod. No.	Date	Drawn By

Tolerances (unless otherwise stated)
 X \pm
 XX \pm
 XXX \pm

Material
 Finish



41		TITLE PIVOT BLOCK	
MATERIAL ALUM ALLOY	SCALE 1/1	TOLERANCES X \pm XX \pm 0.2 XXX \pm 0.1	
FINISH	NO RECD PER UNIT		
G.A. No. W/FX/350 SHT 4	R.G.D.	DRAWING No. W / FX / 391	



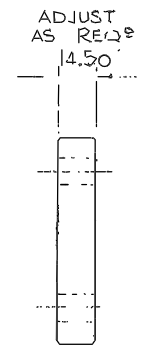
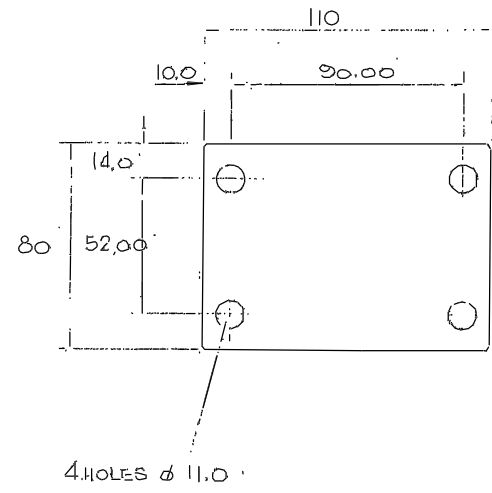
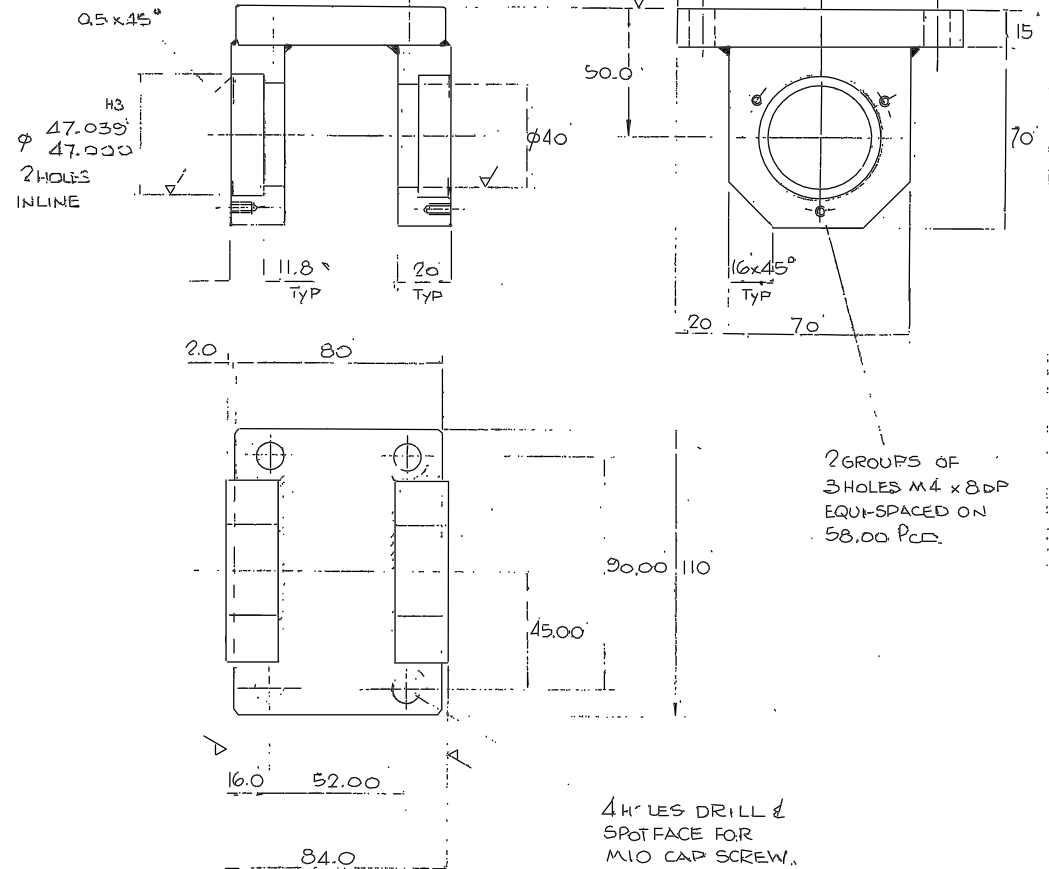
42		TITLE LEVER	
MATERIAL ALUM ALLOY	SCALE 1/1	TOLERANCES X \pm XX \pm 0.2 XXX \pm 0.1	
FINISH	NO RECD PER UNIT		
G.A. No. W/FX/350 SHT 4	R.G.D.	DRAWING No. W / FX / 392	

Dim in m.m.	Scale	THIRD ANGLE PROJECTION	
ROYAL GREENWICH OBSERVATORY, HERSTINGEUX CASTLE HAILSHAM	SUSSEX,	Title	
Dwg. No.	No. Req		
Used on			

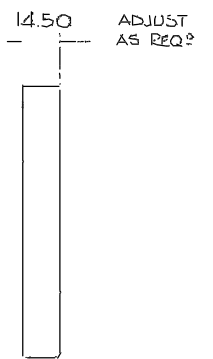
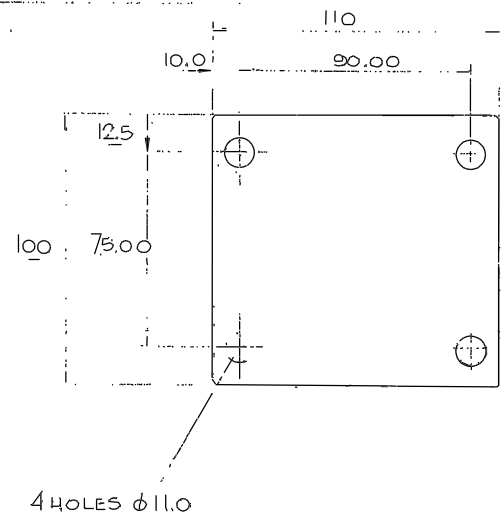
DETAIL

G.A. No.
 Drawing No. 390
 W / FX / 392

Drawing No. 387
 To 389
 W/FX/



38			TITLE		
PACKER					
MATERIAL	SCALE	TOLERANCES			
MS	1/1	X ± 1			
FINISH	NO REQ PER UNIT	X.X ± 0.2			
		X.XX ± 0.1			
G.A. No.	DRAWING No.				
W/FX/350 SH/3	R.G.O. W/FX/388				



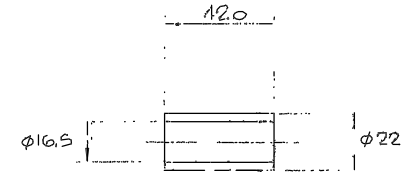
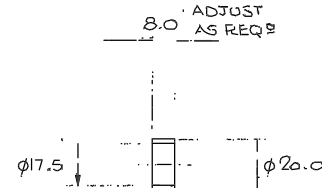
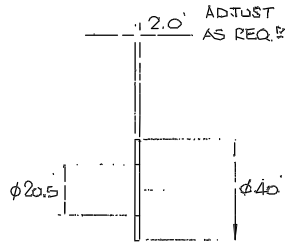
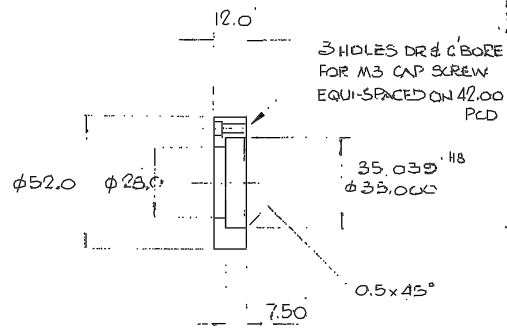
WELD &

37			TITLE		
BRG. BLOCK					
MATERIAL	SCALE	TOLERANCES			
JMS FAB	1/1	X ± 1			
FINISH	NO REQ PER UNIT	X.X ± 0.2			
		X.XX ± 0.1			
G.A. No.	DRAWING No.				
W/FX/350 SH/3	R.G.O. W/FX/387				

39			TITLE		
PACKER					
MATERIAL	SCALE	TOLERANCES			
MS	1/1	X ± 1			
FINISH	NO REQ PER UNIT	X.X ± 0.2			
		X.XX ± 0.1			
G.A. No.	DRAWING No.				
W/FX/350 SH/4	R.G.O. W/FX/389				

										Material		Dim in m.m.		Scale		THIRD ANGLE PROJECTION		G.A. No.	
										Finish		ROYAL GREENWICH OBSERVATORY, HERSTMONCEUX CASTLE, HAILSHAM		SUSSEX.		THIS		Drawing No.	
										X ± X.Y ± X.XX ±		DRG. No.		No. Req.		DETAIL		W/FX/387 To 389	
										Used on									

Drawing No. 378
W/FX/ TO 386

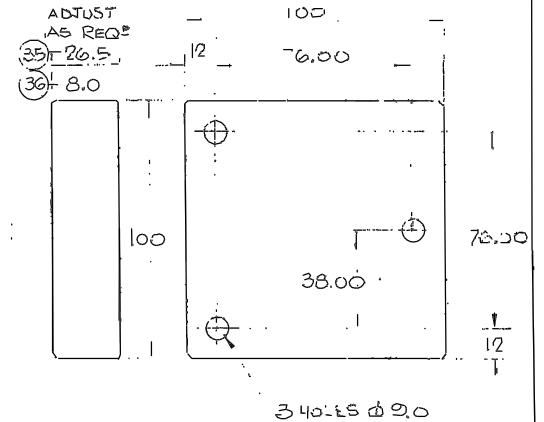
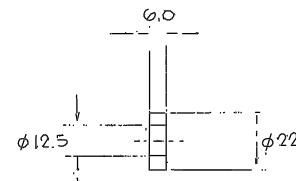
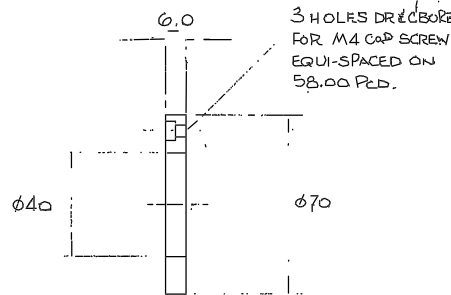
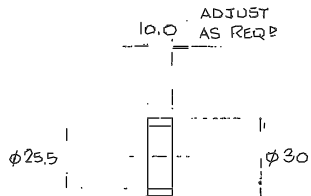


TITLE		
28	BRG. CAP	
MATERIAL	SCALE	TOLERANCES
MS	1/1	x ±1
FINISH	No REQ. PER UNIT	xx ±0.2
	2	xxx ±0.1
G.A. No.	DRAWING No.	
W/FX/350 SH1.3	R.G.O. W/FX/378	

TITLE		
29	SPACER	
MATERIAL	SCALE	TOLERANCES
MS	1/1	x ±1
FINISH	No REQ. PER UNIT	xx ±0.2
	2	xxx ±0.1
G.A. No.	DRAWING No.	
W/FX/350 SH1.3	R.G.O. W/FX/379	

TITLE		
30	SPACER	
MATERIAL	SCALE	TOLERANCES
MS	1/1	y ±1
FINISH	No REQ. PER UNIT	xy ±0.2
	2	xxx ±0.1
G.A. No.	DRAWING No.	
W/FX/350 SH1.3	R.G.O. W/FX/380	

TITLE		
31	SPACER	
MATERIAL	SCALE	TOLERANCES
MS	1/1	x ±1
FINISH	No REQ. PER UNIT	xx ±0.2
	2	xxx ±0.1
G.A. No.	DRAWING No.	
W/FX/350 SH1.3	R.G.O. W/FX/381	



TITLE		
32	SPACER	
MATERIAL	SCALE	TOLERANCES
MS	1/1	x ±1
FINISH	No REQ. PER UNIT	xx ±0.2
	1	xxx ±0.1
G.A. No.	DRAWING No.	
W/FX/350 SH1.3	R.G.O. W/FX/382	

TITLE		
33	BRG. CAP	
MATERIAL	SCALE	TOLERANCES
MS	1/1	x ±1
FINISH	No REQ. PER UNIT	xx ±0.2
	4	xxx ±0.1
G.A. No.	DRAWING No.	
W/FX/350 SH1.3	R.G.O. W/FX/383	

TITLE		
34	WASHER	
MATERIAL	SCALE	TOLERANCES
MS	1/1	x ±1
FINISH	No REQ. PER UNIT	xx ±0.2
	1	xxx ±0.1
G.A. No.	DRAWING No.	
W/FX/350 SH1.3	R.G.O. W/FX/384	

TITLE		
35	36	PACKER
MATERIAL	SCALE	TOLERANCES
MS	1/1	x ±1
FINISH	No REQ. PER UNIT	xx ±0.2
	1 EACH	xxx ±0.1
G.A. No.	DRAWING No.	
W/FX/350 SH1.3	R.G.O. W/FX/385	

Issue	Mod. No.	Date	Drawn By	Issue	Mod. No.	Date	Drawn By

Tolerances (Unless otherwise stated)
x ±
xx ±0.2
xxx ±0.1

Material
Finish

Dimms in m.m.
Scale
Usg. No. No. Rsg.
Used on

ROYAL GREENWICH OBSERVATORY,
HERSTMONDCEUX, CASTLE,
HAILSHAM SUSSEX.

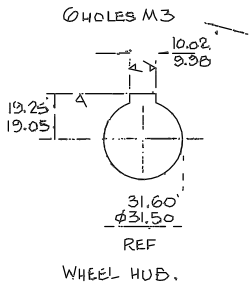
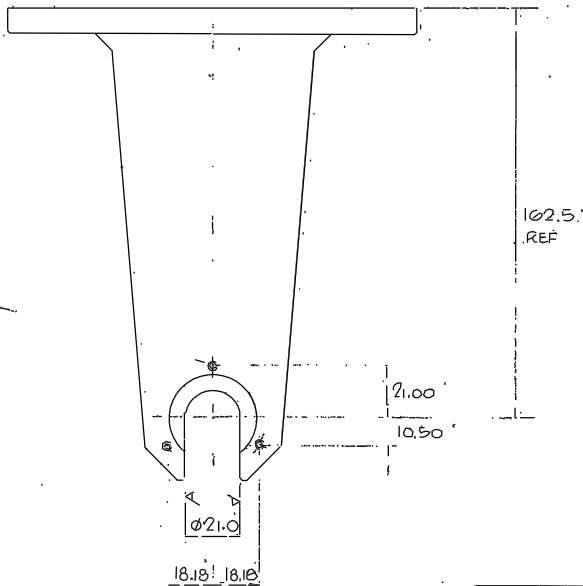
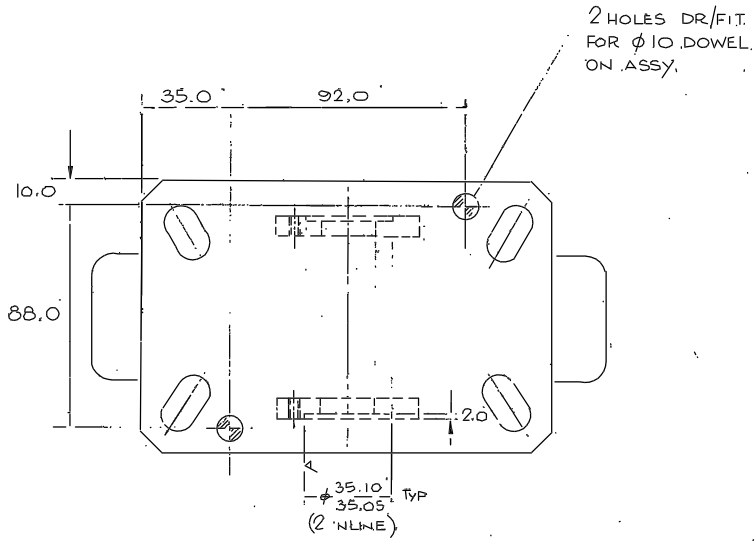
Title

THIRD ANGLE PROJECTION

DETAIL

G.A. No. Drawing No. 378 TO 386
W/FX/

Drawing No: 375
 W / Fx / To 377



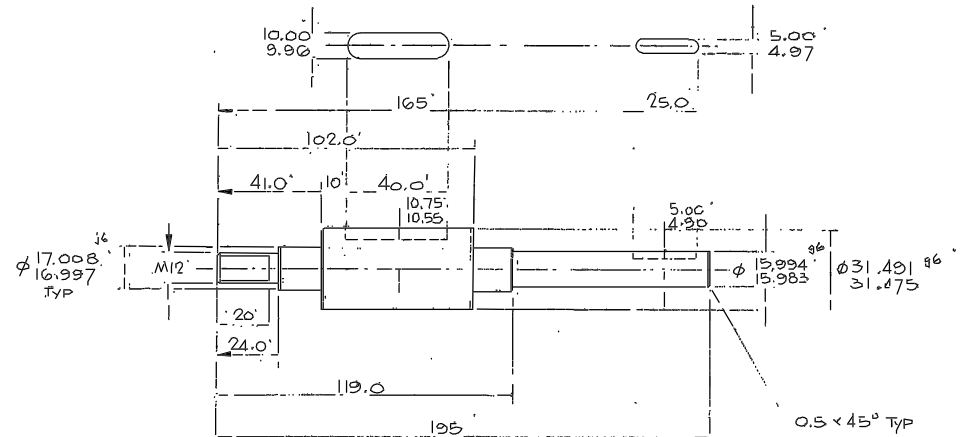
TITLE		SCALE		TOLERANCES	
25	DRIVE CASTOR (MOD) DRG	1/1	X ±	XX ±0.2	XXX ±0.1
MATERIAL SEE NOTE		FINISH NO REQ PER UNIT		D.T. No. DRAWING No.	
V/FX/350 SHT3		R.G.O. W/FX/375			

MODIFY FLEXELLO PART N° 28948-A (KVF8RTB)

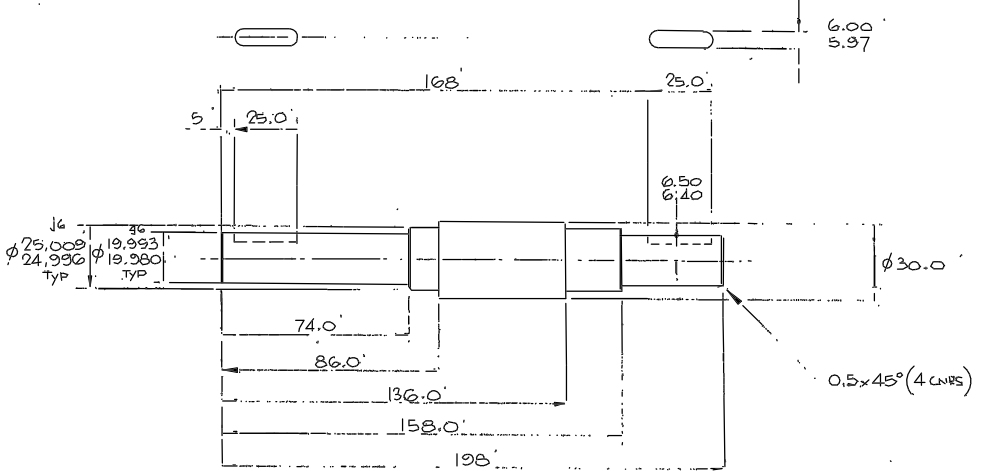
Issue	Mod. No.	Date	Drawn By	Issue	Mod. No.	Date	Drawn By

Tolerances (Unless otherwise stated)	
X	±
XX	±0.2
XXX	±0.1

Material	
Finish	



TITLE		
20	WHEEL SHAFT	
MATERIAL M.S.	SCALE 1/1	TOLERANCES X ±, XX ±0.2, XXX ±0.1
FINISH	NO REQ PER UNIT	
D.T. No. V/FX/350 SHT3	DRAWING No. R.G.O. W/FX/376	



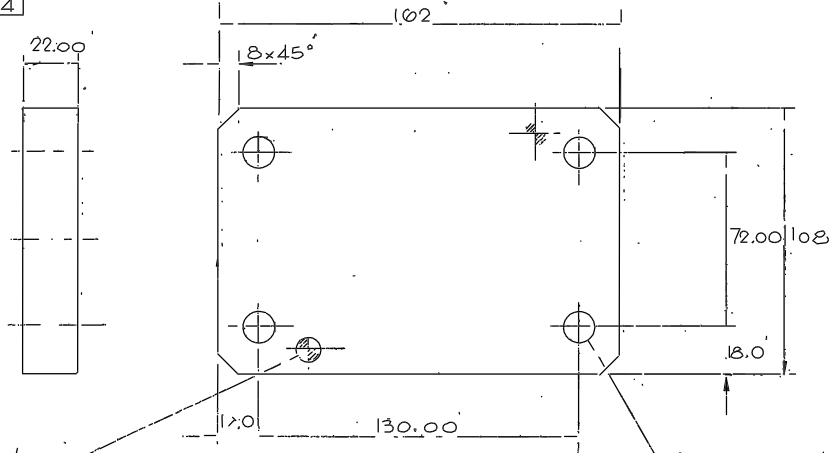
TITLE		SCALE		TOLERANCES	
27	SHAFT	1/1	X ±	XX ±0.2	XXX ±0.1
MATERIAL M.S.		FINISH NO REQ PER UNIT		D.T. No. DRAWING No.	
V/FX/350 SHT3		R.G.O. W/FX/377			

THIRD ANGLE PROJECTION

DETAIL

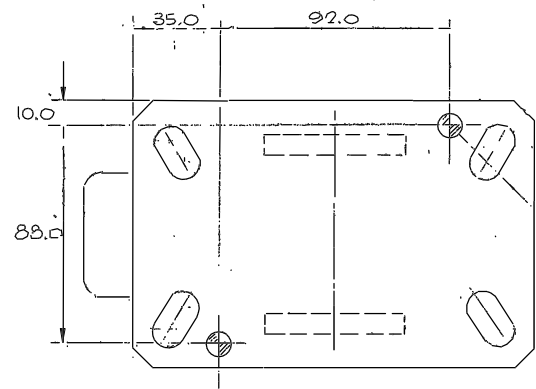
Drawing No. W / Fx / To 375 To 377

Drawing No. 370
 W/FX/374



2 HOLES DR/FIT FOR $\phi 10$ DOWEL ON ASSY WITH CASTOR.

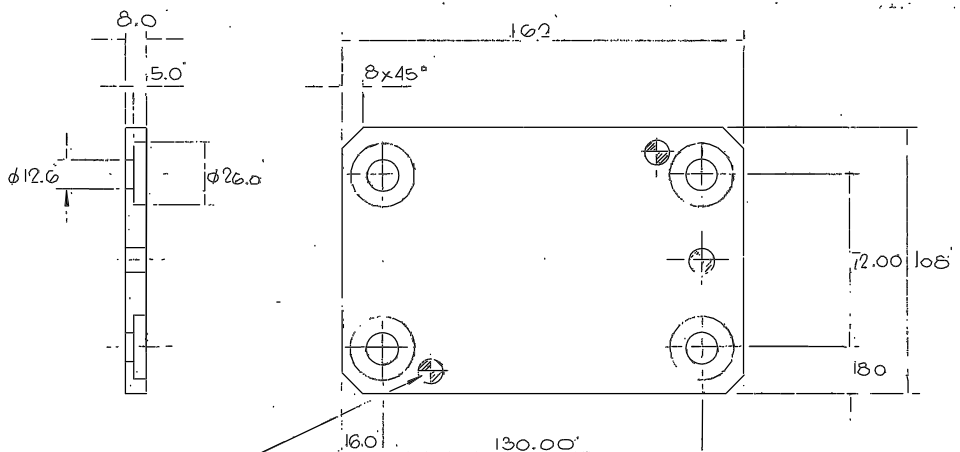
TITLE			
20 PACKER			
MATERIAL	SCALE	TOLERANCES	
MS	1/1	X ± 1	
FINISH	NO REQ. PER UNIT	XX ± 0.2	
	3 (TRIAL)	XXX ± 0.1	
G.A. No.	DRAWING No.	R.G.O.	
V/FX/350 SH/2	W/FX/370		



2 HOLES DR/FIT FOR $\phi 10$ DOWEL ON ASSY.

TITLE			
23 FIXED CASTOR (MOD DRG)			
MATERIAL	SCALE	TOLERANCES	
SEE NOTE	1/1	X ± 1	
FINISH	NO REQ. PER UNIT	XX ± 0.2	
	1	XXX ± 0.1	
G.A. No.	DRAWING No.	R.G.O.	
V/FX/350 SH/3	W/FX/373		

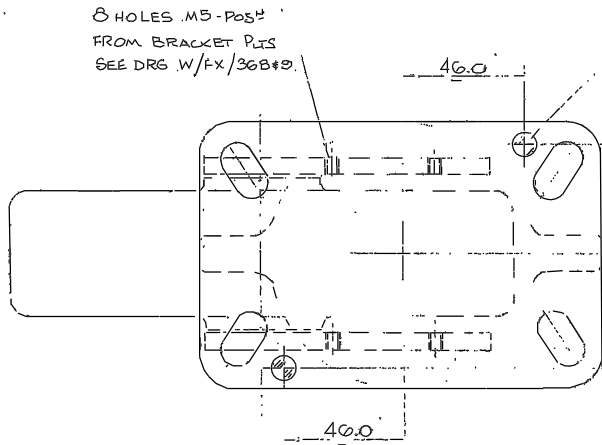
MODIFY FLEXELLO PART No 28948-A (KTFB RTB)



2 HOLES DR/FIT FOR $\phi 10$ DOWEL ON ASSY WITH CASTOR - ITEM 23. (ITEM 21 ONLY)

TITLE			
21 SPRING PLATE			
MATERIAL	SCALE	TOLERANCES	
MS	1/1	X ± 1	
FINISH	NO REQ. PER UNIT	XX ± 0.2	
	1 (TRIAL)	XXX ± 0.1	
G.A. No.	DRAWING No.	R.G.O.	
V/FX/350 SH/3	W/FX/371		

TITLE			
22 SPRING PLATE			
MATERIAL	SCALE	TOLERANCES	
MS	1/1	X ± 1	
FINISH	NO REQ. PER UNIT	XX ± 0.2	
	1 (TRIAL)	XXX ± 0.1	
G.A. No.	DRAWING No.	R.G.O.	
V/FX/350 SH/3	W/FX/372		



8 HOLES M5-POS FROM BRACKET PLTS SEE DRG W/FX/368#2.

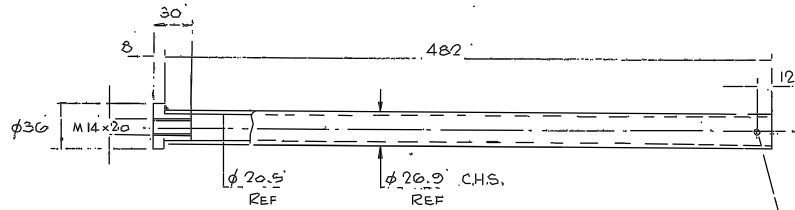
2 HOLES DR/FIT FOR $\phi 10$ DOWEL ON ASSY.

TITLE			
24 SWIVEL CASTOR (MOD DRG)			
MATERIAL	SCALE	TOLERANCES	
SEE NOTE	1/1	X ± 1	
FINISH	NO REQ. PER UNIT	XX ± 0.2	
	2	XXX ± 0.1	
G.A. No.	DRAWING No.	R.G.O.	
V/FX/350 SH/2	W/FX/374		

MODIFY FLEXELLO PART No 30579-D (KVB RTB)

THIRD ANGLE PROJECTION									
DETAIL									
G.A. No. Drawing No. 370 TO W/FX/374									

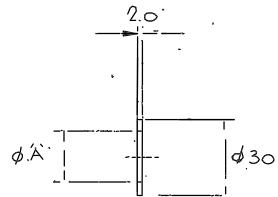
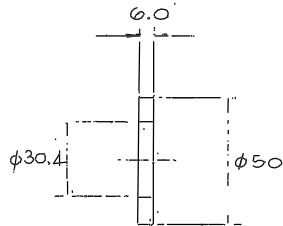
Drawing No. 364.
W./FX/369
TO 369



DR & RM ON ASSY FOR .Φ5 TAPER P.I.,

NOTE, CONTINUOUS WELD \curvearrowright & PRIME & PAINT - YELLOW TO RGO SPEC.

TITLE		
14 STEERING ROD		
MATERIAL	SCALE	TOLERANCES
M.S. FAB ²	1/2 FULL	x ±1
FINISH	No REQ. PER UNIT	xx ±0.2
	2	xxx ±0.1
G.A. No.	DRAWING No.	
VFX/350 SHT.2	R.G.O. W/FX/364	



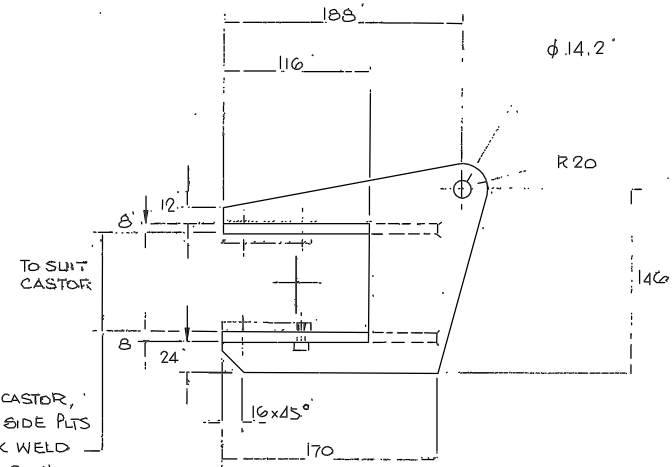
A = Φ20.5

TITLE		
16 SPACER		
MATERIAL	SCALE	TOLERANCES
MS	1/1	x ±1
FINISH	No REQ. PER UNIT	xx ±0.2
	1	xxx
G.A. No.	DRAWING No.	
VFX/350 SHT.2	R.G.O. W/FX/366	

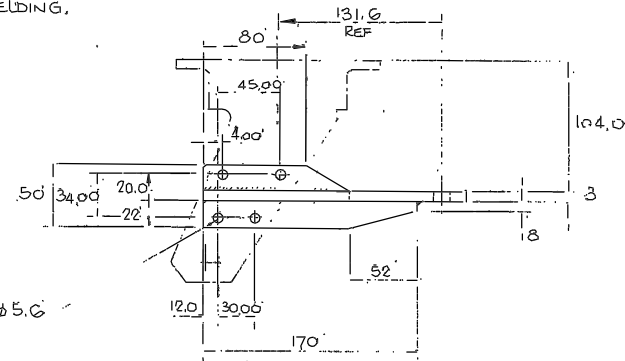
A = Φ9.0

TITLE		
17 SPACER		
MATERIAL	SCALE	TOLERANCES
MS	1/1	x ±1
FINISH	No REQ. PER UNIT	xx ±0.2
	1	xxx
G.A. No.	DRAWING No.	
VFX/350 SHT.2	R.G.O. W/FX/367	

TITLE		
15 SPACER		
MATERIAL	SCALE	TOLERANCES
MS	1/1	x ±1
FINISH	No REQ. PER UNIT	xx ±0.2
	2	xxx
G.A. No.	DRAWING No.	
VFX/350 SHT.2	R.G.O. W/FX/365	



CLEAN UP CASTOR, SCREW ON SIDE PLTS & THEN TACK WELD MAIN PLT IN POSⁿ REMOVE ASSY & COMPLETE WELDING.



8 HOLES Φ5.0

NOTE, CONTINUOUS WELD \curvearrowright PRIME & PAINT - YELLOW TO RGO SPEC.

AS DRAWN,

OPP. HAND.

TITLE		
18 CASTOR BRKT - LH		
MATERIAL	SCALE	TOLERANCES
MS FAB ²	1/2 FULL	x ±1
FINISH	No REQ. PER UNIT	xx ±0.2
	1	xxx
G.A. No.	DRAWING No.	
VFX/350 SHT.2	R.G.O. W/FX/368	

TITLE		
19 CASTOR BRKT - R/H		
MATERIAL	SCALE	TOLERANCES
MS FAB ²	1/2 FULL	x ±1
FINISH	No REQ. PER UNIT	xx ±0.2
	1	xxx
G.A. No.	DRAWING No.	
VFX/350 SHT.2	R.G.O. W/FX/369	

Issue	Mod. No.	Date	Drawn By	Issue	Mod. No.	Date	Drawn By

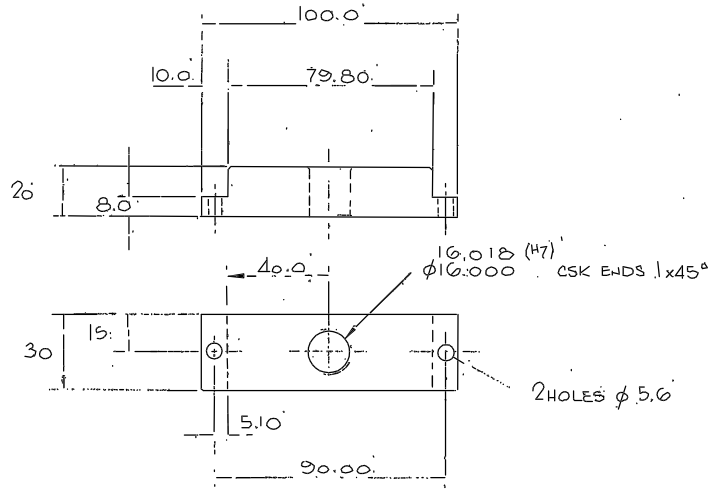
Tolerances (Unless otherwise stated)	
x	±1
xx	±0.2
xxx	±

Material		Dimts in m.m.		Scale	
Finish		Drw. No.	No. Req.	ROYAL GREENWICH OBSERVATORY, HERSTMONCEUX CASTLE, HAILSHAM, SUSSEX.	
		Used on			

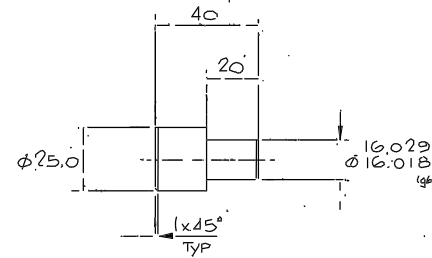
Title	
THIRD ANGLE PROJECTION	
DETAIL	

G.A. No.	
Drawing No. 364 To W./FX/369	

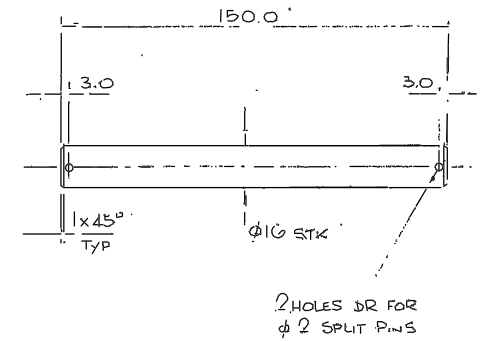
Drawing No. 357
 W/FX/ TO 363



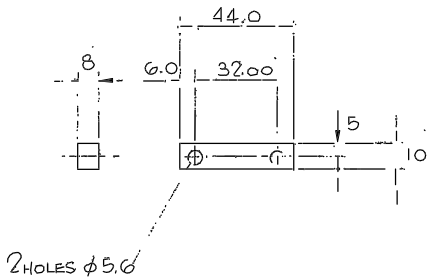
7. TITLE: STRAP		
MATERIAL	SCALE	TOLERANCES
M.S.	1/1	x ± 1
FINISH	No REQ. PER UNIT	xx ± 0.2
		xxx ± 0.1
G.A. No.	DRAWING No.	
W/FX/350 SHZ2	R.G.O. W/FX/357	



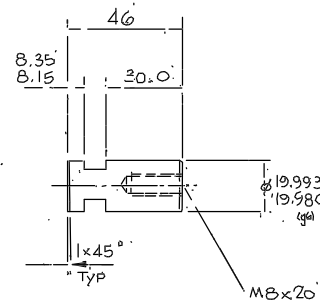
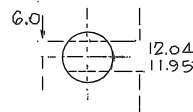
8. TITLE: STOP		
MATERIAL	SCALE	TOLERANCES
SIL. STEEL	1/1	x ± 1
FINISH	No REQ. PER UNIT	xx ± 0.2
		xxx ± 0.1
G.A. No.	DRAWING No.	
W/FX/350 SHZ2	R.G.O. W/FX/358	



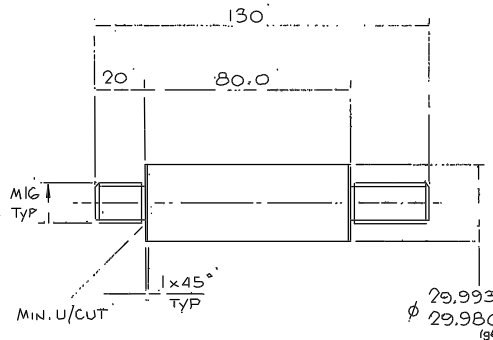
9. TITLE: SPINDLE		
MATERIAL	SCALE	TOLERANCES
PGMS	1/1	x ± 1
FINISH	No REQ. PER UNIT	xx ± 0.2
		xxx ± 0.1
G.A. No.	DRAWING No.	
W/FX/350 SHZ2	R.G.O. W/FX/359	



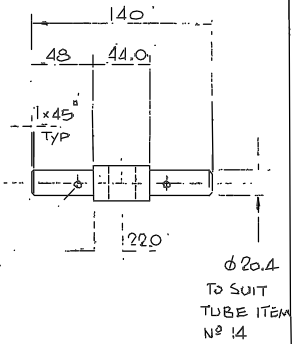
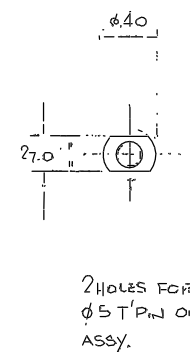
10. TITLE: BAR		
MATERIAL	SCALE	TOLERANCES
ALUM ALLOY	1/1	x ± 1
FINISH	No REQ. PER UNIT	xx ± 0.2
		xxx ± 0.1
G.A. No.	DRAWING No.	
W/FX/350 SHZ2	R.G.O. W/FX/360	



11. TITLE: PIN		
MATERIAL	SCALE	TOLERANCES
TOOL STL	1/1	x ± 1
FINISH	No REQ. PER UNIT	xx ± 0.2
		xxx ± 0.1
G.A. No.	DRAWING No.	
W/FX/350 SHZ2	R.G.O. W/FX/361	



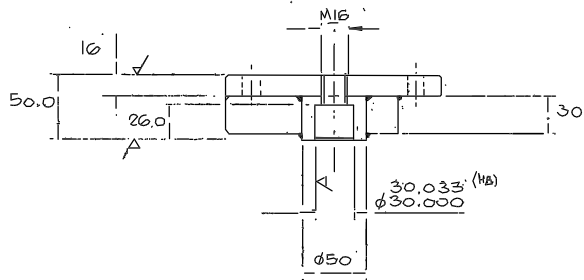
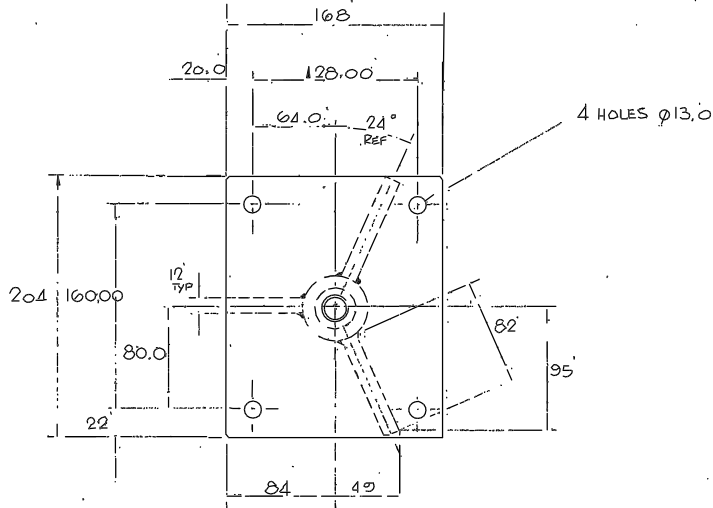
12. TITLE: PIVOT PIN		
MATERIAL	SCALE	TOLERANCES
TOOL STL	1/1	x ± 1
FINISH	No REQ. PER UNIT	xx ± 0.2
		xxx ± 0.1
G.A. No.	DRAWING No.	
W/FX/350 SHZ2	R.G.O. W/FX/362	



13. TITLE: ROD CONNECTOR		
MATERIAL	SCALE	TOLERANCES
M.S.	1/2 FULL	x ± 1
FINISH	No REQ. PER UNIT	xx ± 0.2
		xxx ± 0.1
G.A. No.	DRAWING No.	
W/FX/350 SHZ2	R.G.O. W/FX/363	

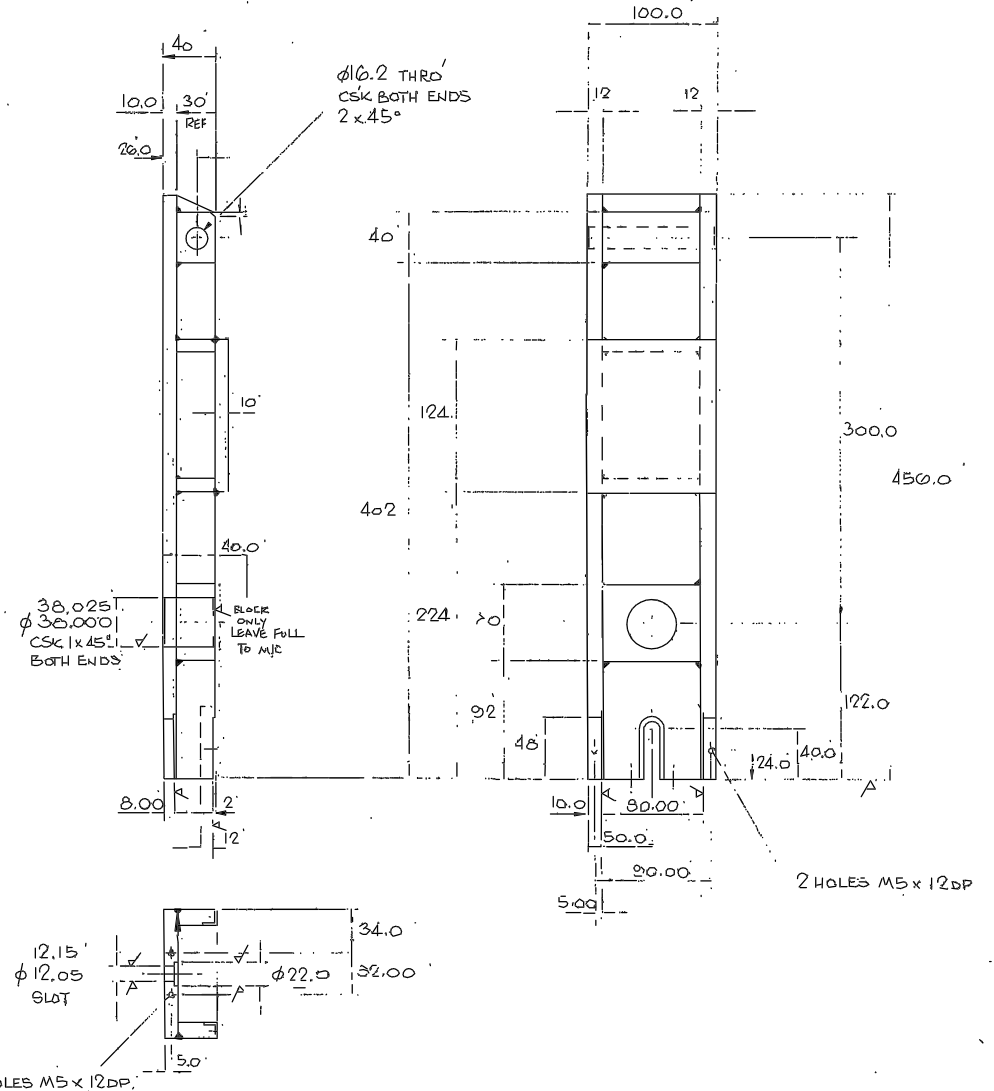
Issue	Mod. No.	Date	Drawn By	Issue	Mod. No.	Date	Drawn By	Material	Dimms in m.m.	Scale	THIRD ANGLE PROJECTION	G.A. No.
								Finish			DETAIL	Drawing No. 357
									Drp. No.	No. Req.		TO 363
									Used on			

Drawing No. 355
W/FX/350



NOTE.
CONTINUOUS WELD & L.
STRESS RELIEVE AS REQ'D
& M/C @ ✓.
PRIME & PAINT UNMACHINED
SURFACES - YELLOW TO RGO SPEC.

5		Pivot Bracket	
MATERIAL	SCALE	TOLERANCES	
M.S. FAB ¹¹	1/2 FULL	x	+1
FINISH	No REQR. PER UNIT	x.x	±0.2
SEE NOTE	1	x.x.x	±0.1
C.A. No.	DRAWING No.		
W/FX/350 SHZ	R.G.O. W/FX/355		



NOTE.
CONTINUOUS WELD & L.
STRESS RELIEVE AS REQ'D
& M/C @ ✓.
PRIME & PAINT UNMACHINED
SURFACES - YELLOW TO RGO SPEC.

6		Steering Arm	
MATERIAL	SCALE	TOLERANCES	
M.S. FAB ¹¹	1/2 FULL	x	±1
FINISH	No REQR. PER UNIT	x.x	±0.2
SEE NOTE	1	x.x.x	±0.1
C.A. No.	DRAWING No.		
W/FX/350 SHZ	R.G.O. W/FX/350		

Issue	Mod. No.	Date	Drawn By	Issue	Mod. No.	Date	Drawn By

Tolerances (Unless otherwise stated)
x ±
x.x ±
x.x.x ±

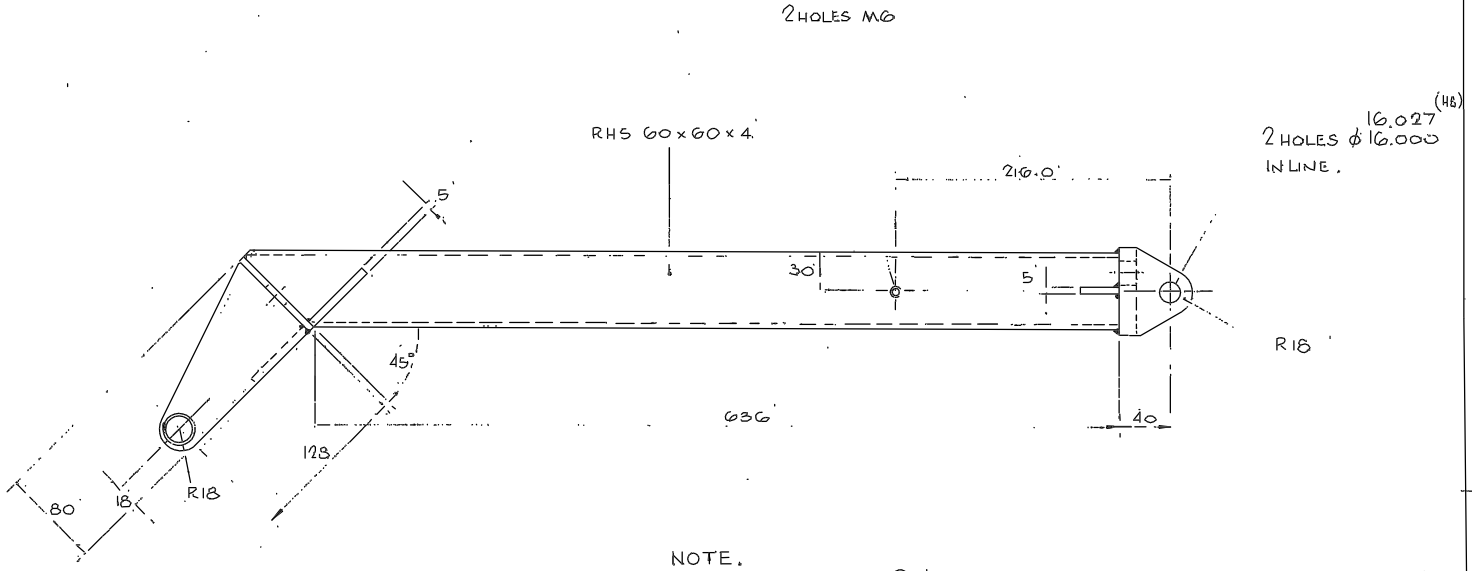
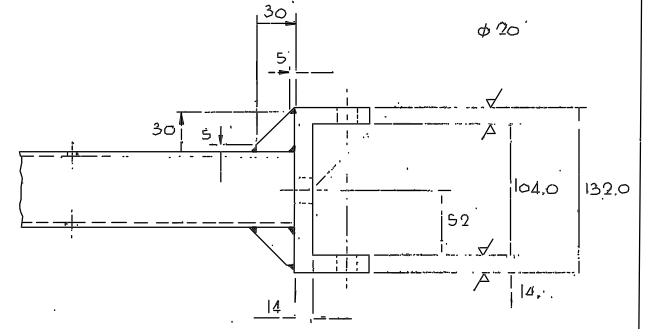
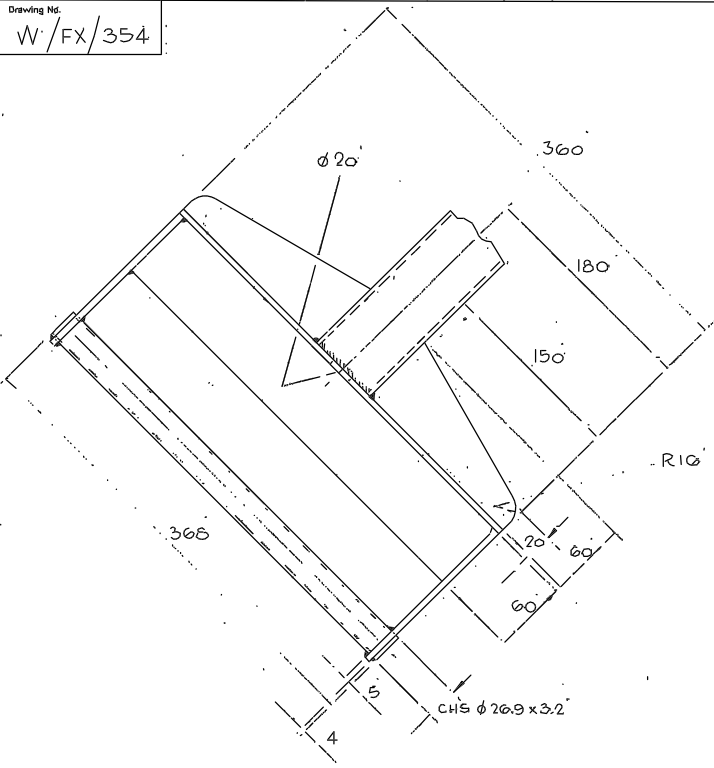
Material	Dimns in n.m.	Scale
Finish	Dirg. No.	No. Req.
	Used on	

ROYAL GREENWICH OBSERVATORY,
HEARSTMONCEUX CASTLE,
HAILSHAM SUSSEX.

THIRD ANGLE PROJECTION
DETAIL

G.A. No. 355
Drawing No. W/FX/350

Drawing No. W/FX/354



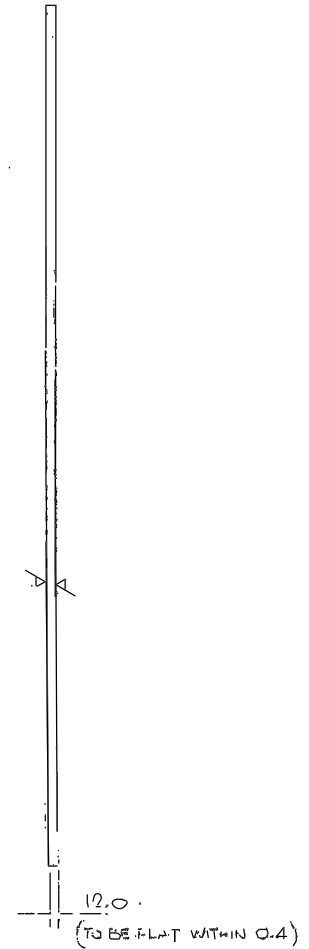
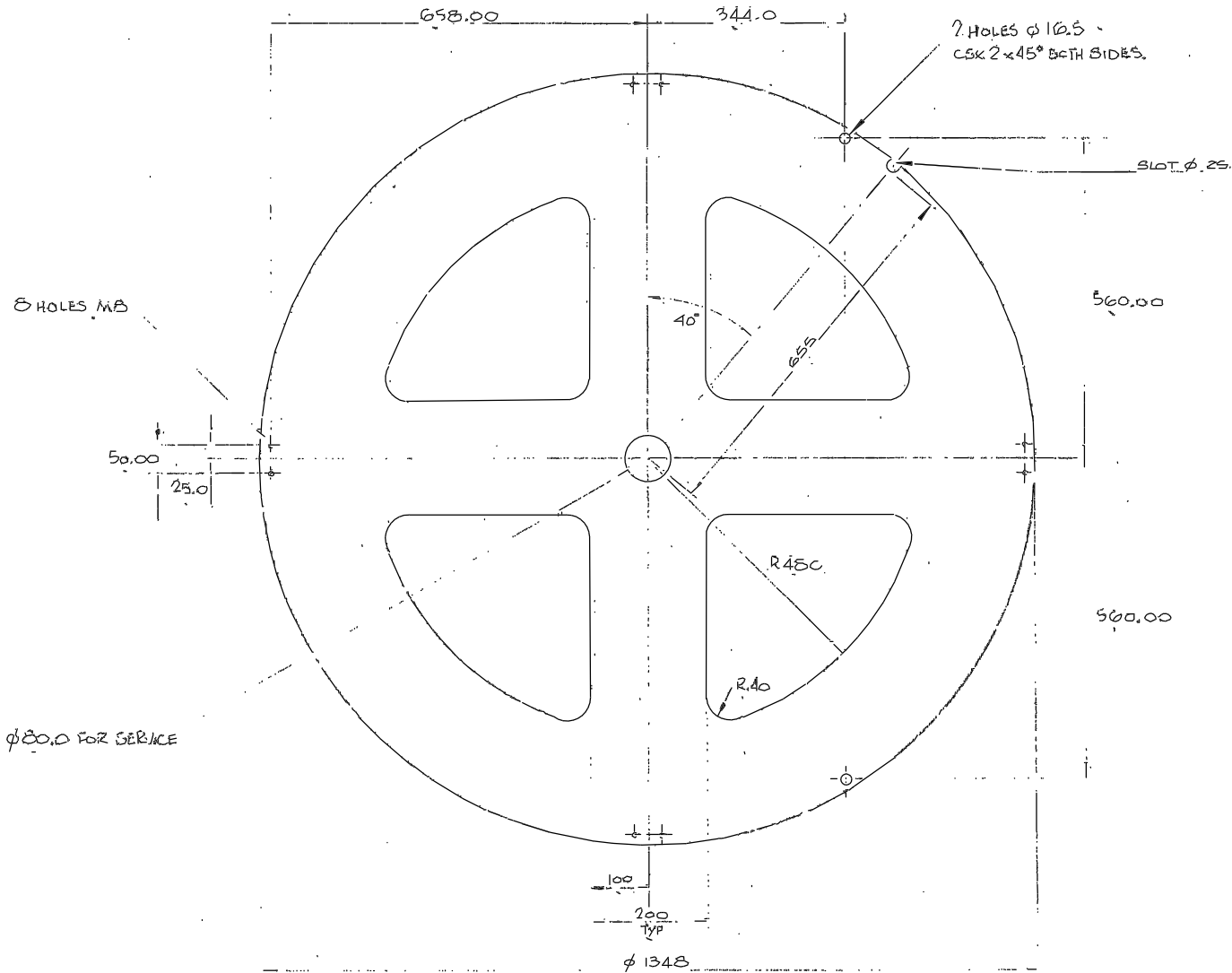
NOTE.
 CONTINUOUS WELD @ L
 STRESS RELIEVE & M/C @ V
 PRIME & PAINT UNMACHINED SURFACES
 YELLOW TO R.G.O. SPECIFICATION.

REMOVE ALL SWARD EDGES

4		HANDLE	
MATERIAL	SCALE	TOLERANCES	
M.S. FAB#	1/2 FULL	x ±1	
FINISH	NO REQ. PER UNIT	xx ±0.2	
SEE NOTE	1.	XX	
D.A. No.	DRAWING No.		
1/FX/350 S1.2	R.G.O. W/FX/354.		

				Tolerances Unless otherwise stated				Material		Dimms in mm.		Scale		THIRD ANGLE PROJECTION		Title		G.A. No. 1/FX/350 S1.2	
				X ±1				Finish		ROYAL GREENWICH OBSERVATORY,				DETAIL		Drawing No.		W/FX/354	
				XX ±1				Drg. No.		HERSTMONCEUX CASTLE,									
				XXX ±1				Used on		HAILSHAM,									
Issue	Mod. No.	Date	Drawn By	Issue	Mod. No.	Date	Drawn By												

Drawing No.
W/FX/353

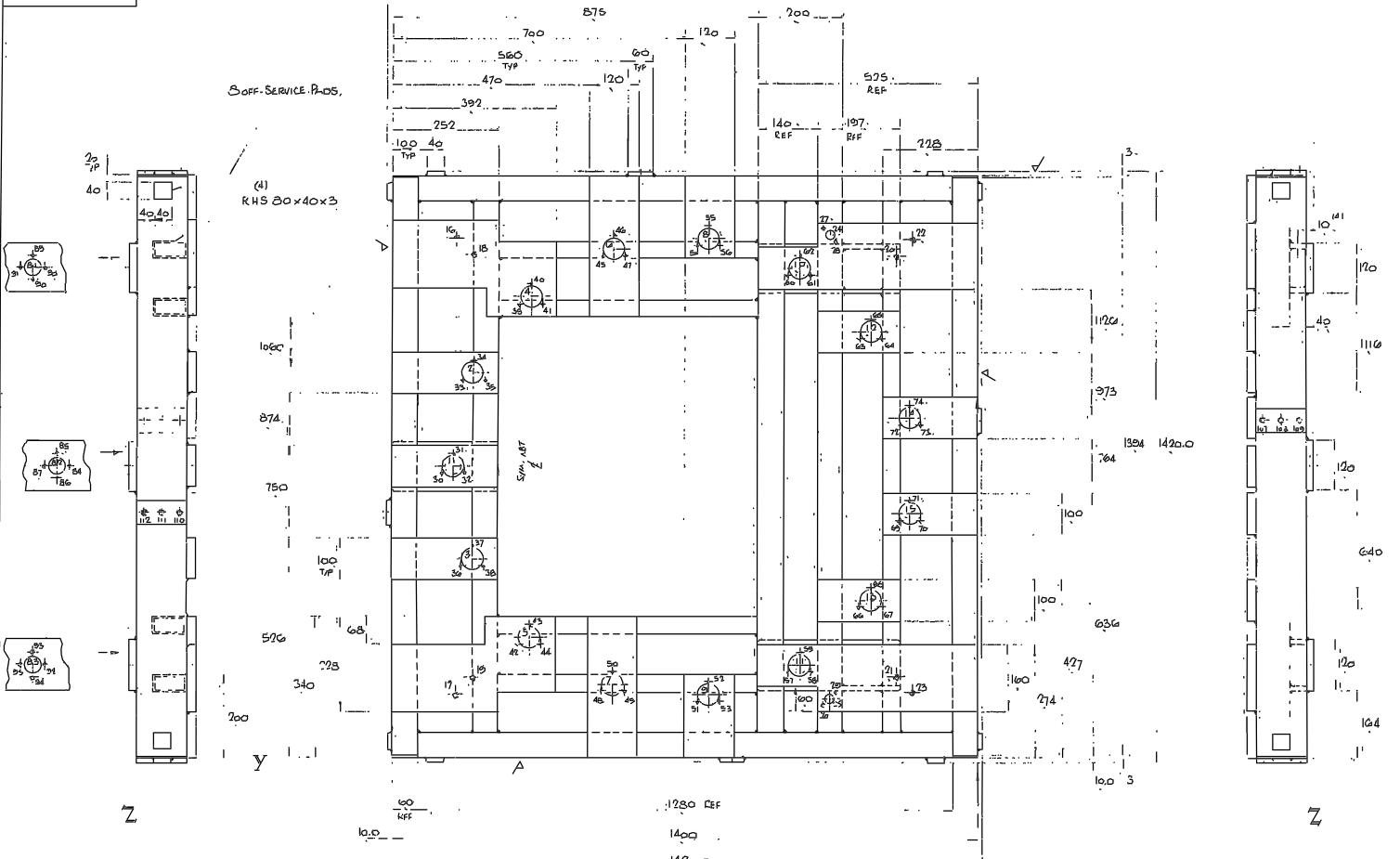


REMOVE ALL SHARP EDGES

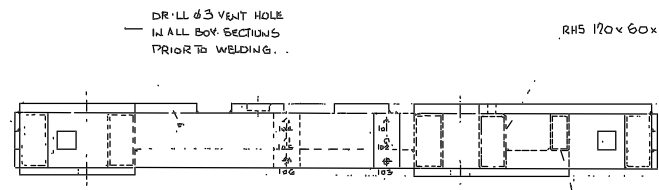
MATERIAL		SCALE		TOLERANCES	
M. STL.	1/4	x ±1		xx ±0.2	
FINISH	No REQ. PER UNIT	xxx ±0.1			
D.A. No. W/FX/353 SHEET 1	R.G.O.	DRAWING No. W/FX/353			

Tolerances (Unless otherwise stated)						Material		Dimns in mm.		Scale: 1/4		THIRD ANGLE PROJECTION		Title		Drawing No.	
Issue	Mod. No.	Date	Drawn By	Issue	Mod. No.	Date	Drawn By	Finish	Dwg. No.	No. Req.	ROYAL GREENWICH OBSERVATORY, HERSTMONGEUX CASTLE, HAILSHAM SUSSEX.	DETAIL		W/FX/353			

DRAWING NUMBER	No. of Sheets	GA. Item No.	DRAWING TITLE OR COMPONENT NAME	No. of	MATERIAL STOCK OR ORDER No. AND DATE	REMARKS	ISSUE DATE	ISSUED TO	FINISH DATE	
/ /		226								
/ /										
/ /										
/ /		229	HEX HD SCREW	M14 x 40	2					
/ /		230	" "	M12 x 50	12					
/ /		231	" "	M12 x 25	4					
/ /		232	" "	M10 x 40	4					
/ /		233	" "	M8 x 100	3					
/ /		234	" "	M10 x 30	6					
/ /		235	" "	M8 x 120	3					
/ /		236	PLAIN WASHER	φ16	3					
/ /		237		φ14	4					
/ /		238		φ12	12					
/ /		239		φ10	10					
/ /		240		φ8	6					
/ /		241		φ6	4					
/ /										
/ /										
/ /		244	HEX NUT	M14	2					
/ /		245	"	M12	8					
/ /		246	"	M8	2					
/ /										
/ /										
/ /		249	HEX LOCKNUT	M16	2					
/ /		250	"	M14	2					
/ /		251	"	M12	2					
/ /		252	DOWEL PIN	φ10 x 20	8					
/ /		253	"	φ5 x 20	2					
/ /										
/ /		255	TAPER PIN	φ5 x 30	2					
/ /										
/ /		257	SPLIT PIN	φ2 x 25	2					
/ /										
/ /										
/ /										
/ /										
JOB TITLE	4,2M A&G TRANSPORTER					ASSY DRG. No. V/FX/350	SHEET No. 7	DRAWN BY PROMEC DATE NOV 87		
ROYAL GREENWICH OBSERVATORY,					HERSTMONCEUX CASTLE,	HAILSHAM,	SUSSEX			



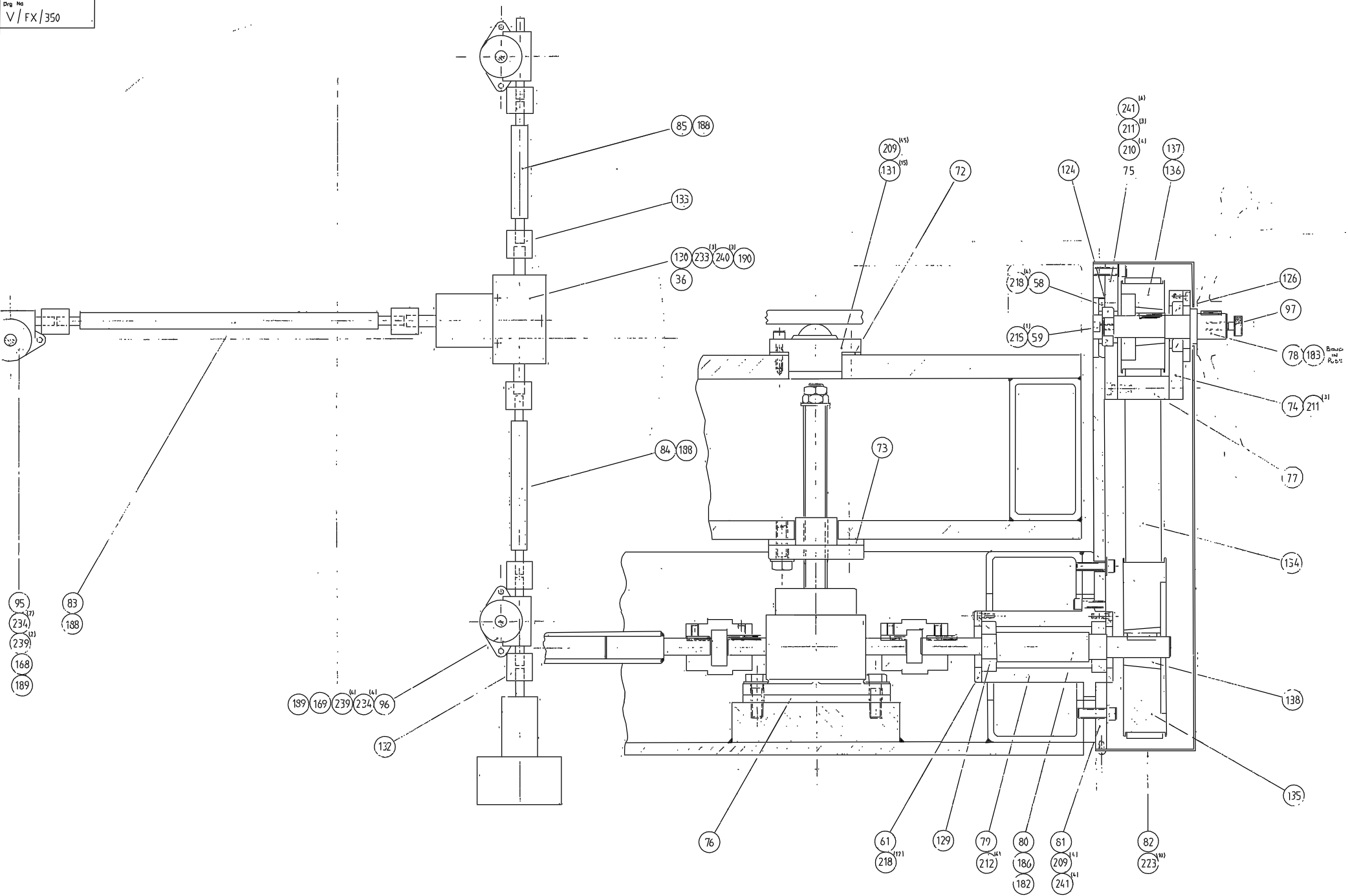
HOLE	X	Y	Z	SIZE
1	160.00	710.00		
2	207.55	233.70		
3	207.55	456.30		
4	341.95	1118.75		
5	341.95	301.47		
6	540.04	1233.00		
7	540.04	136.92		
8	707.49	1250.99		
9	707.49	163.01		
10	885.00	1186.31		
11	885.00	733.69		
12	1013.50	710.00		
13	1013.50	1186.31		
14	1013.50	233.69		
15	1013.50	456.30		
16	1013.50	1214.87		
17	1013.50	795.13		
18	1013.50	233.69		
19	1013.50	1214.87		
20	1013.50	795.13		
21	1013.50	233.69		
22	1013.50	1214.87		
23	1013.50	795.13		
24	1013.50	233.69		
25	1013.50	1214.87		
26	1013.50	795.13		
27	1013.50	233.69		
28	1013.50	1214.87		
29	1013.50	795.13		
30	1013.50	233.69		
31	1013.50	1214.87		
32	1013.50	795.13		
33	1013.50	233.69		
34	1013.50	1214.87		
35	1013.50	795.13		
36	1013.50	233.69		
37	1013.50	1214.87		
38	1013.50	795.13		
39	1013.50	233.69		
40	1013.50	1214.87		
41	1013.50	795.13		
42	1013.50	233.69		
43	1013.50	1214.87		
44	1013.50	795.13		
45	1013.50	233.69		
46	1013.50	1214.87		
47	1013.50	795.13		
48	1013.50	233.69		
49	1013.50	1214.87		
50	1013.50	795.13		
51	1013.50	233.69		
52	1013.50	1214.87		
53	1013.50	795.13		
54	1013.50	233.69		
55	1013.50	1214.87		
56	1013.50	795.13		
57	1013.50	233.69		
58	1013.50	1214.87		
59	1013.50	795.13		
60	1013.50	233.69		
61	1013.50	1214.87		
62	1013.50	795.13		
63	1013.50	233.69		
64	1013.50	1214.87		
65	1013.50	795.13		
66	1013.50	233.69		
67	1013.50	1214.87		
68	1013.50	795.13		
69	1013.50	233.69		
70	1013.50	1214.87		
71	1013.50	795.13		
72	1013.50	233.69		
73	1013.50	1214.87		
74	1013.50	795.13		



NOTE.
CONTINUOUS WELD TO L.
STRESS RELIEVE AS REQ'D & M/C TO A.
PRIME & PAINT UNMACHINED SURFACES
YELLOW TO R.G.O. SPECIFICATION.

TOP FRAME	
MS. FABR.	1/4 FULL
SEE NOTE	FOR PARTS
R.G.O. (35)	

Tolerances (Unless otherwise stated)				Material		Dimns. in mm		Scale 1/4	ROYAL GREENWICH OBSERVATORY, HERSTMONCEUX CASTLE, HAILSHAM		SUSSEX.		GA No. V/FX/351 SWT.1	
Issue	Mod No.	Date	Drawn By	Issue	Mod No.	Date	Drawn By	Drq No.	No. Req.	Used on	THIRD ANGLE PROJECTION		Drawing No V/FX/351	
											DETAIL			



- 95
- 234⁽¹⁷⁾
- 239⁽¹⁸⁾
- 168
- 189

- 83
- 188

- 139
- 169
- 239⁽¹⁶⁾
- 234⁽¹⁶⁾
- 96

- 132

- 85
- 188

- 133

- 130
- 233⁽¹⁹⁾
- 240⁽¹⁹⁾
- 190
- 36

- 84
- 188

- 209⁽¹⁵⁾
- 131⁽¹⁵⁾

- 72

- 124

- 241⁽¹⁴⁾
- 211⁽¹⁴⁾
- 210⁽¹⁴⁾
- 75
- 137
- 136

- 218⁽¹⁴⁾
- 58

- 215⁽¹⁴⁾
- 59

- 126

- 97

- 78
- 183

- 74
- 211⁽²¹⁾

- 77

- 134

- 138

- 135

- 76

- 61
- 218⁽¹⁷⁾

- 129

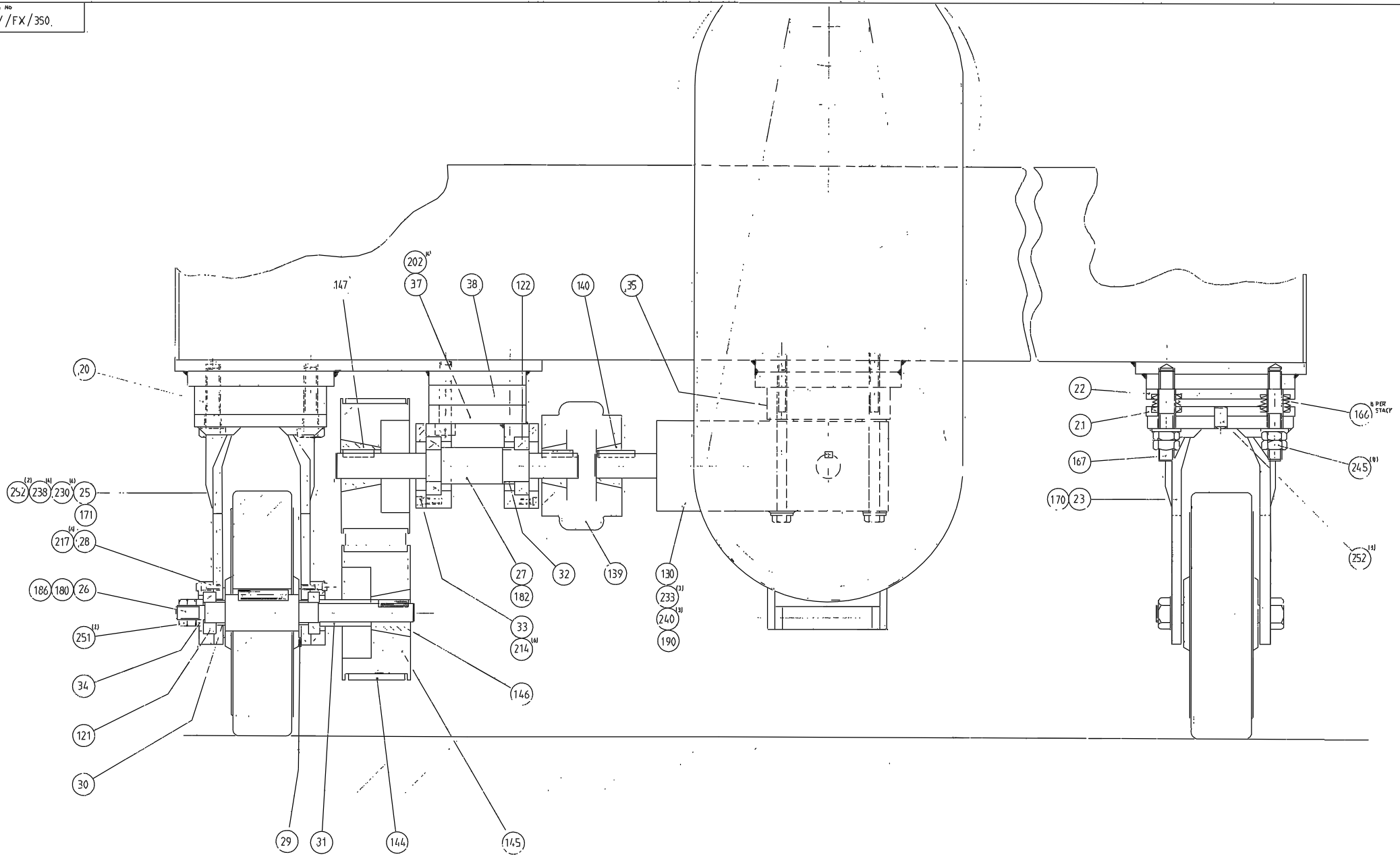
- 79
- 212⁽¹⁴⁾

- 80
- 186
- 182

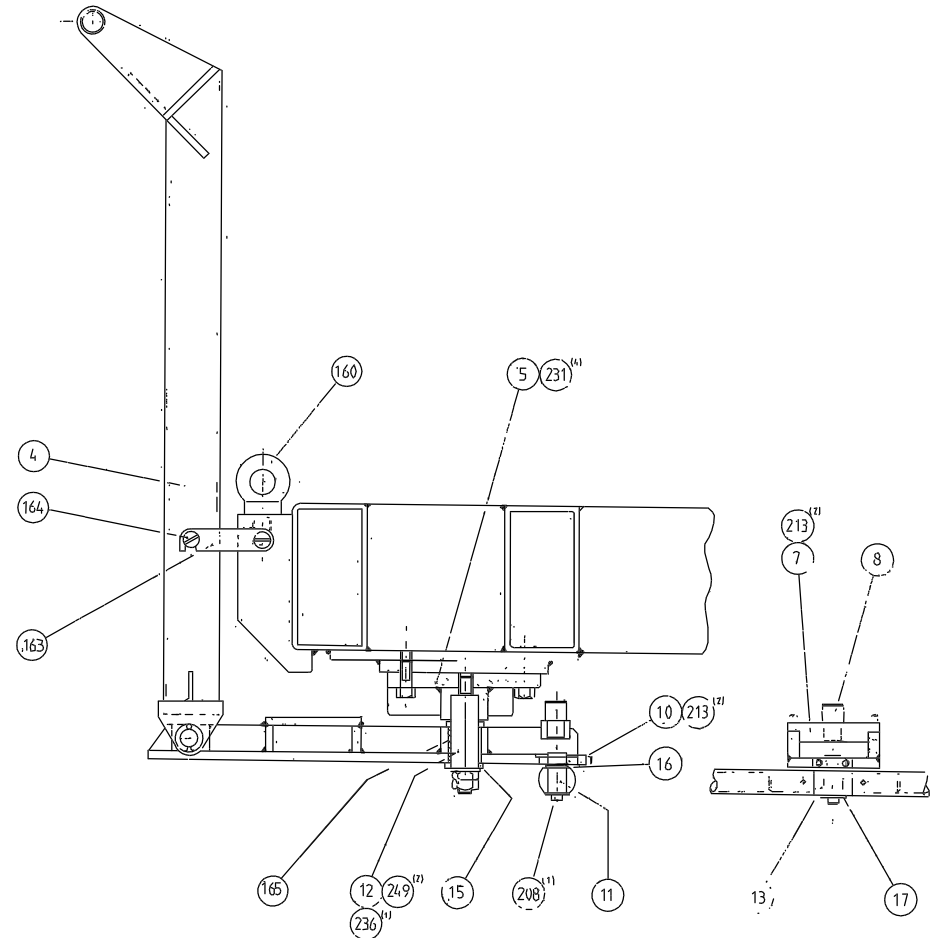
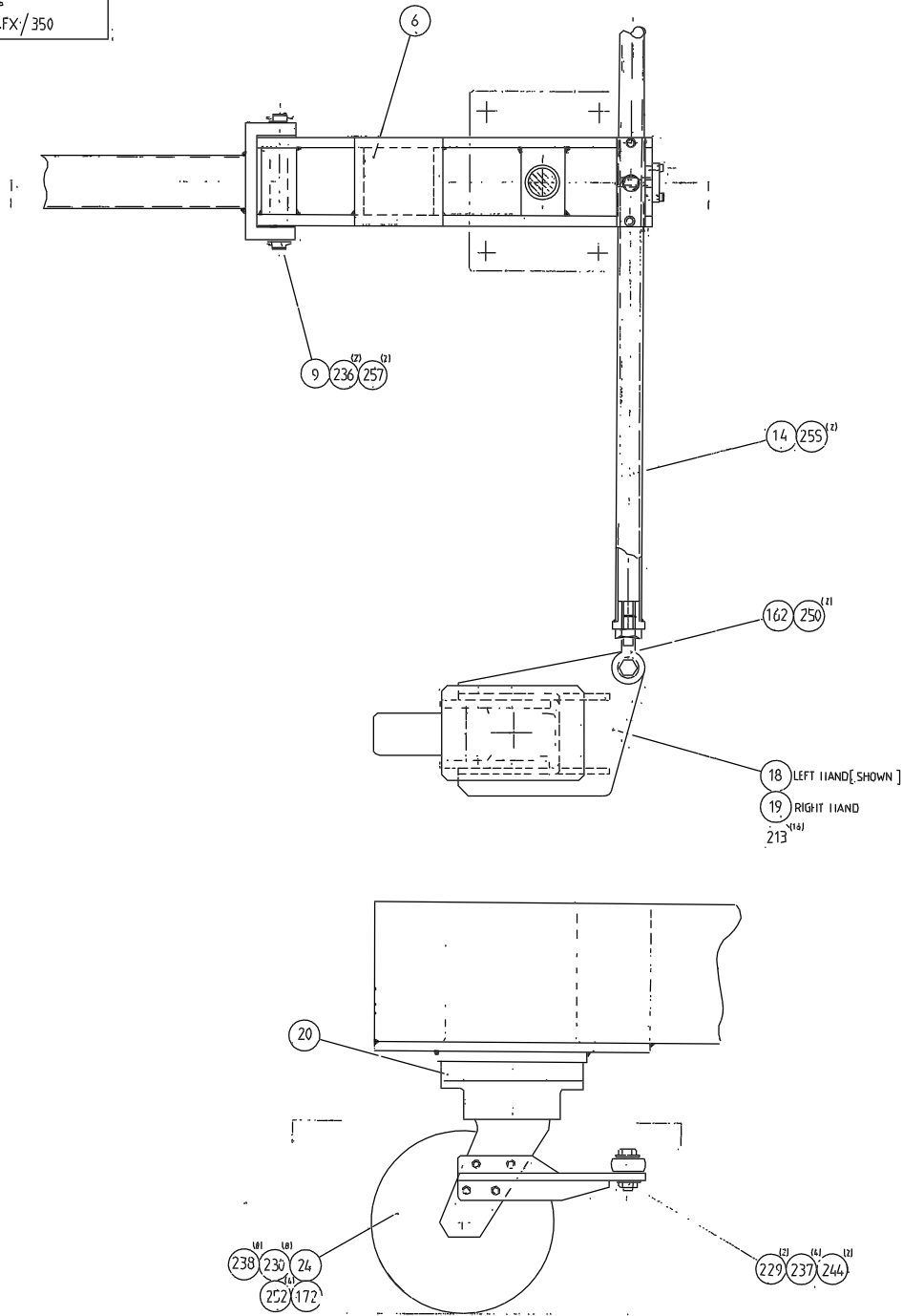
- 81
- 209⁽¹⁴⁾
- 241⁽¹⁴⁾

- 82
- 223⁽¹⁶⁾

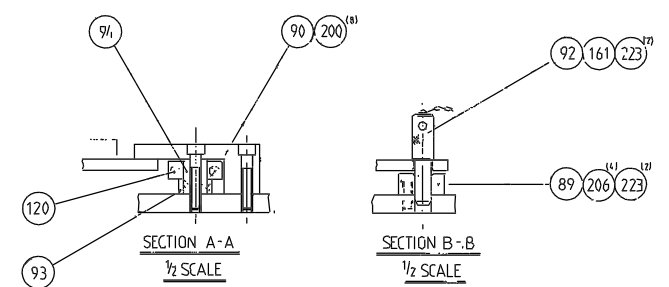
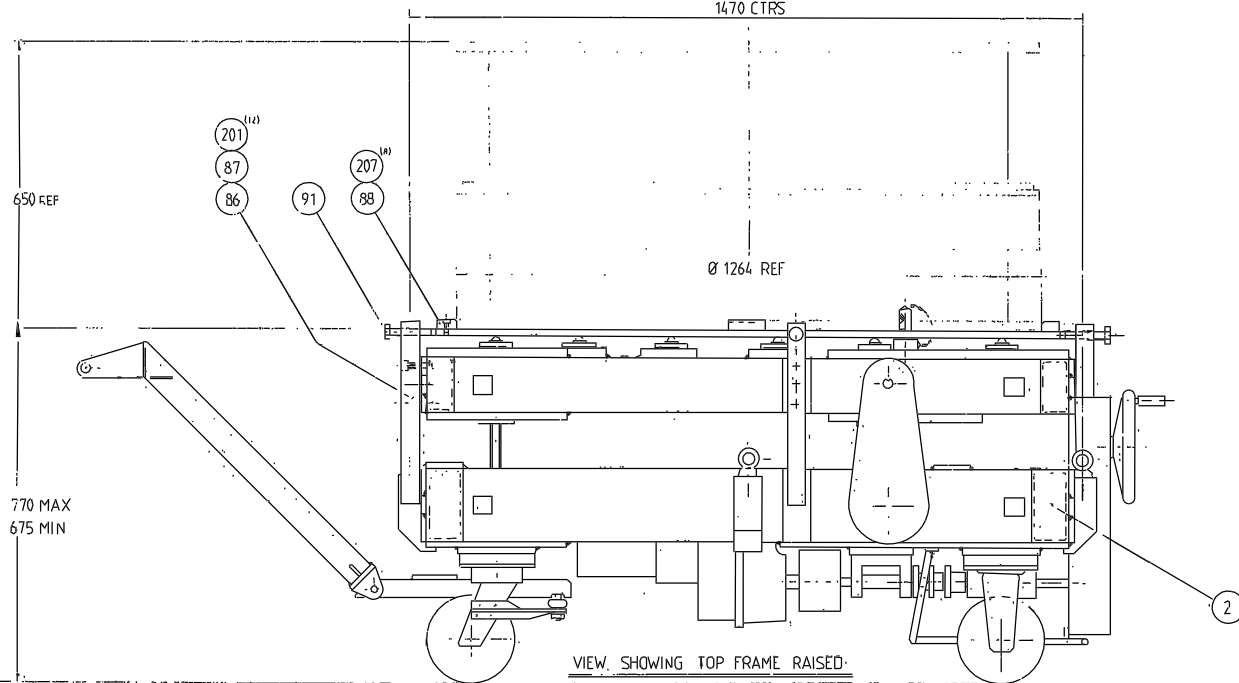
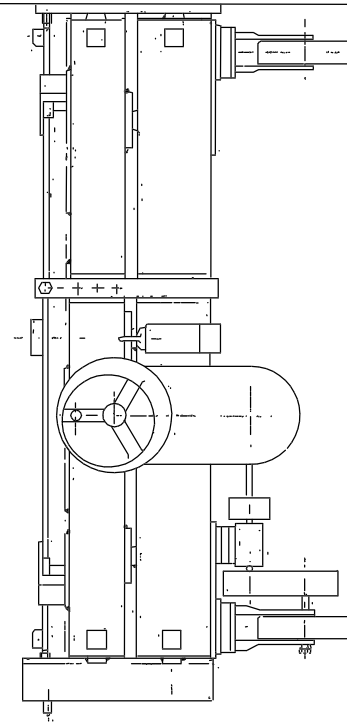
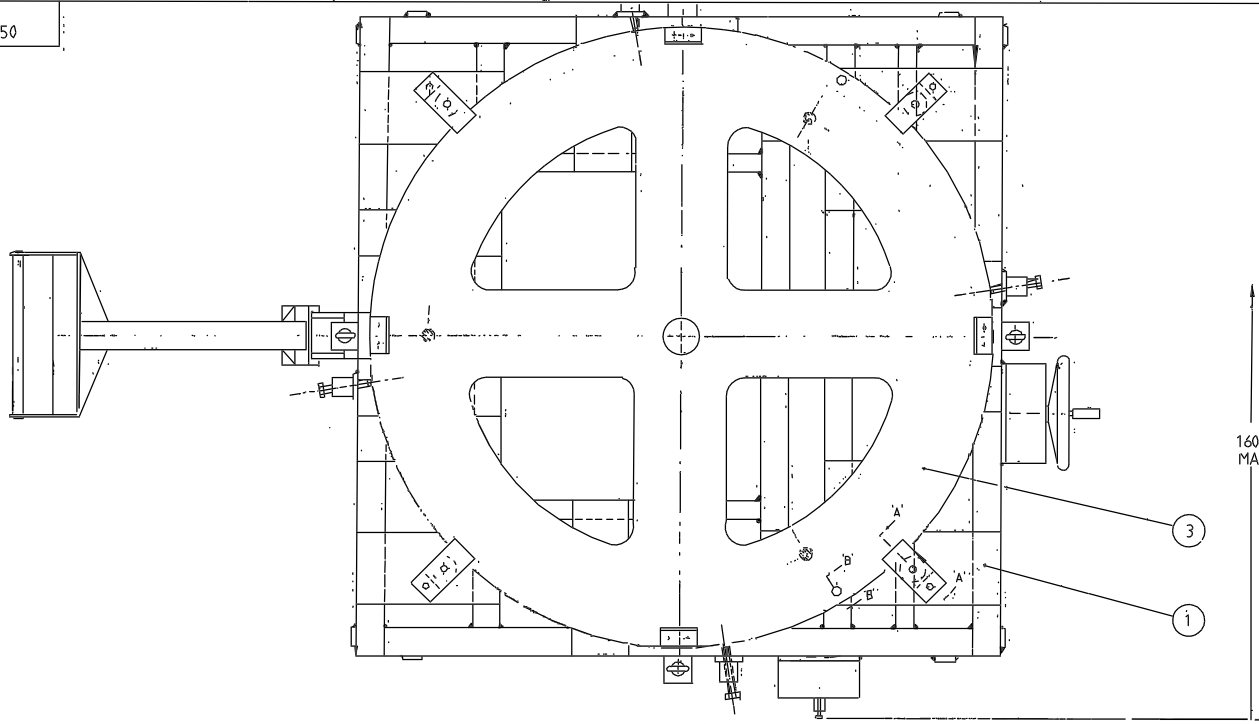
										Tolerances (Unless otherwise stated)	Material	Dimns. in n.m.		Scale 1:1 & 1/2	THIRD ANGLE PROJECTION		G.A. No. SHT. 5		
										✓ ± XX ± XXX ±	Finish	Drwg. No.	No. Req.	ROYAL GREENWICH OBSERVATORY, HERSTMONCEUX CASTLE, HAILSHAM SUSSEX.		Title 4.2M A & G TRANSPORTER [JACKING SYSTEM]		Drawing No. V / FX / 350	
Issue	Mod. No.	Date	Drawn By	Issue	Mod. No.	Date	Drawn By												
						NOV 87	PROMEC												



								Tolerances (Unless otherwise stated)		Material		Dimens. in m.m.		Scale 1:1		THIRD ANGLE PROJECTION		G.A. No. SHIT 3									
				NOV 87				PRIMEC		Finish		Drwg No.		No. Req.		ROYAL GREENWICH OBSERVATORY, HERSTMONCEUX CASTLE, HAILSHAM, SUSSEX		Title									
Issue				Mod No.				Date				Drawn By				Used on				4,2 M A & G TRANSPORTER [DRIVE ASSY]				Drawing No V/FX/350			



							Tolerances (Unless otherwise stated)	Material	Dimms. in m.m.		Scale 1/2	THIRD ANGLE PROJECTION		GA No. SHT 2.	
							X ±	Finish	Drwg. No. No. Req.		ROYAL GREENWICH OBSERVATORY, HERSTMONGUEUX CASTLE, HAILSHAM SUSSEX		Title 4,2M A&G TRANSPORTER [STEERING ASSY.]		Drawing No. V/FX/350
Issue	Mod No	Date	Drawn By	Issue	Mod No.	Date	Drawn By	Used on							
						NOV 87	PRIMEC								



NOTE!
 ESTIMATED WEIGHT OF TROLLEY 650 KG
 ESTIMATED WEIGHT OF A&G UNIT 1100 KG
 FOR FINISH & PROOF TESTING ETC. SEE DRG N° V/FX/352

JACKING SYSTEM SHT 5.
 AUXILIARY DRIVE SHT 4.
 DRIVE ASSY SHT 3.
 STEERING ASSY SHT 2.

VIEW SHOWING TOP FRAME RAISED

Tolerances (unless otherwise stated)						Material		Dims. in m		Scale 1/2 & 1/4		THIRD ANGLE PROJECTION		G.A. No. SHEET 1 OF 5.	
X ±						Finish		Drng. No. No. Rng.		ROYAL GREENWICH OBSERVATORY, HERSTMONCEUX CASTLE, HAILSHAM SUSSEX		Title		Drawing No.	
.oct 67 B.T.H.												4,2M. A & G TRANSPORTER		V/FX/350	
Issue	Mod. No.	Date	Drawn By	Issue	Mod. No.	Date	Drawn By	Used on							