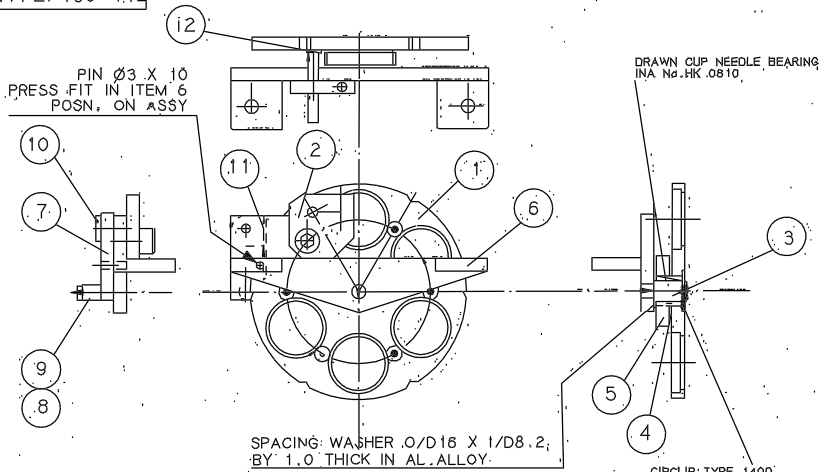


Drawing No.
W/FZ/100-1.12

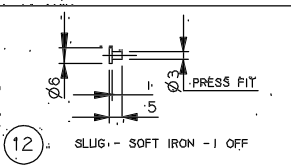
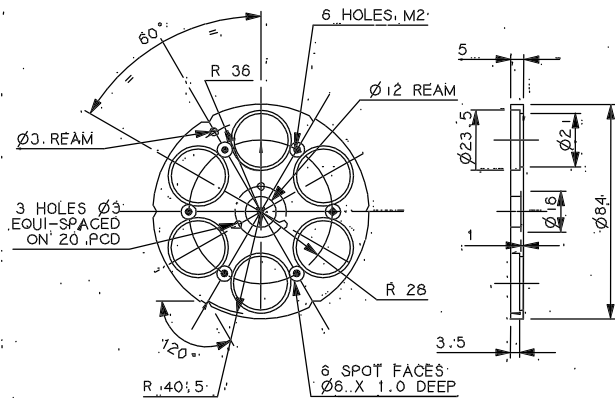


SPACING WASHER Ø/D16 X 1/D8.2,
BY 1.0 THICK IN AL. ALLOY.

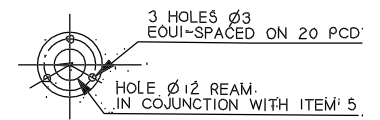
W/FZ/100

DRAWN CUP NEEDLE BEARING:
INA No. HK.0810.

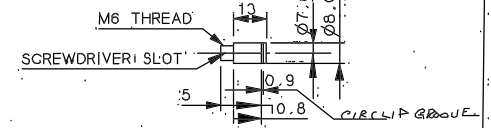
CIRCLIP TYPE 1400
No. 8200 FROM ANDERTON



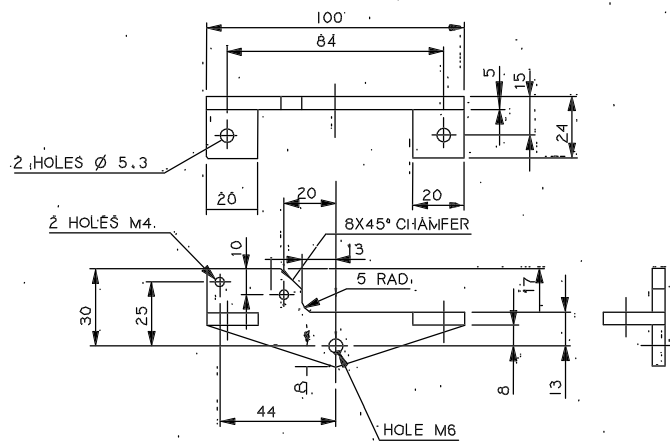
TITLE		DISC REF.	
1 FILTER WHEEL			
MATERIAL	SCALE	TOLERANCES ±	
AL. ALLOY	1:1	0.25	
FINISH	No. REQD. PER UNIT	X.X	
BL. ANODISE	1	X.XX	
G.A. No.	DRAWING No.	DRAWING No.	
RG0	W/FZ/010	W/FZ/010	



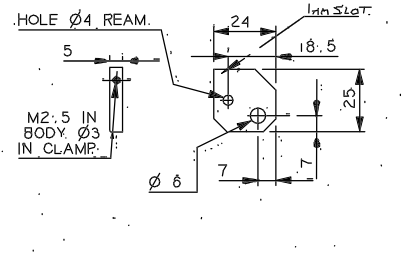
TITLE		DISC REF.	
4 PACKING WASHER			
MATERIAL	SCALE	TOLERANCES ±	
AL. ALLOY	1:1	0.25	
FINISH	No. REQD. PER UNIT	X.X	
BL. ANODISE	1	X.XX	
G.A. No.	DRAWING No.	DRAWING No.	
RG0	W/FZ/104	W/FZ/104	



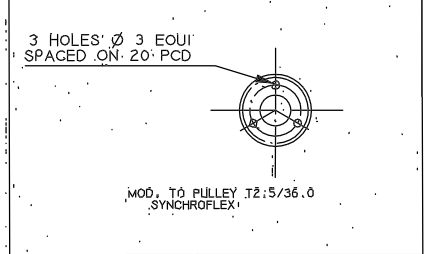
TITLE		DISC REF.	
3 SPINDLE			
MATERIAL	SCALE	TOLERANCES ±	
ST. STEEL	1:1	0.25	
FINISH	No. REQD. PER UNIT	X.X	
BL. ANODISE	1	X.XX	
G.A. No.	DRAWING No.	DRAWING No.	
RG0	W/FZ/103	W/FZ/103	



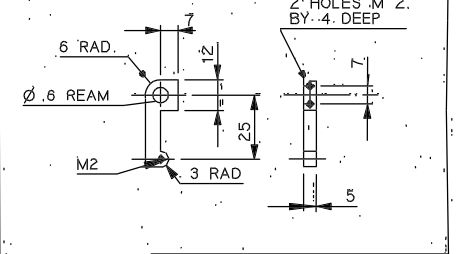
TITLE		DISC REF.	
6 MOUNTING: BKT			
MATERIAL	SCALE	TOLERANCES ±	
AL. ALLOY	1:1	0.25	
FINISH	No. REQD. PER UNIT	X.X	
BL. ANODISE	1	X.XX	
G.A. No.	DRAWING No.	DRAWING No.	
RG0	W/FZ/108	W/FZ/108	



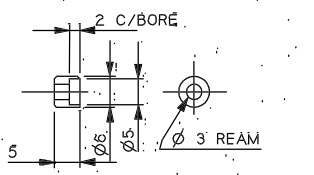
TITLE		DISC REF.	
6A HETTICH CLAMP			
MATERIAL	SCALE	TOLERANCES ±	
AL. ALLOY	1:1	0.25	
FINISH	No. REQD. PER UNIT	X.X	
BL. ANODISE	1	X.XX	
G.A. No.	DRAWING No.	DRAWING No.	
RG0	W/FZ/108/A	W/FZ/108/A	



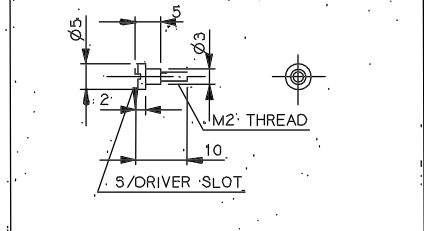
TITLE		DISC REF.	
5 DRIVEN PULLEY			
MATERIAL	SCALE	TOLERANCES ±	
AS SUPPLIED	1:1	0.1	
FINISH	No. REQD. PER UNIT	X.X	
BL. ANODISE	1	X.XX	
G.A. No.	DRAWING No.	DRAWING No.	
RG0	W/FZ/104	W/FZ/104	



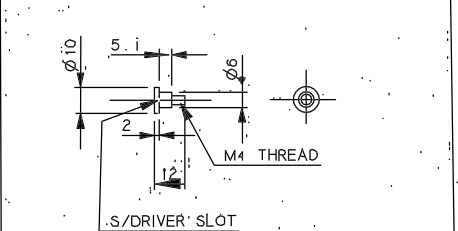
TITLE		DISC REF.	
7 DETENT ARM			
MATERIAL	SCALE	TOLERANCES ±	
AL. ALLOY	1:1	0.25	
FINISH	No. REQD. PER UNIT	X.X	
BL. ANODISE	1	X.XX	
G.A. No.	DRAWING No.	DRAWING No.	
RG0	W/FZ/107	W/FZ/107	



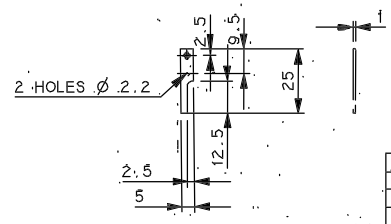
TITLE		DISC REF.	
8 ROLLER			
MATERIAL	SCALE	TOLERANCES ±	
ST. STEEL	2:1	0.05	
FINISH	No. REQD. PER UNIT	X.X	
BL. ANODISE	1	X.XX	
G.A. No.	DRAWING No.	DRAWING No.	
RG0	W/FZ/108	W/FZ/108	



TITLE		DISC REF.	
9 SHOULDER SCREW			
MATERIAL	SCALE	TOLERANCES ±	
ST. STEEL	2:1	0.25	
FINISH	No. REQD. PER UNIT	X.X	
BL. ANODISE	1	X.XX	
G.A. No.	DRAWING No.	DRAWING No.	
RG0	W/FZ/109	W/FZ/109	



TITLE		DISC REF.	
10 SHOULDERED SCREW			
MATERIAL	SCALE	TOLERANCES ±	
ST. STEEL	1:1	0.25	
FINISH	No. REQD. PER UNIT	X.X	
BL. ANODISE	1	X.XX	
G.A. No.	DRAWING No.	DRAWING No.	
RG0	W/FZ/110	W/FZ/110	



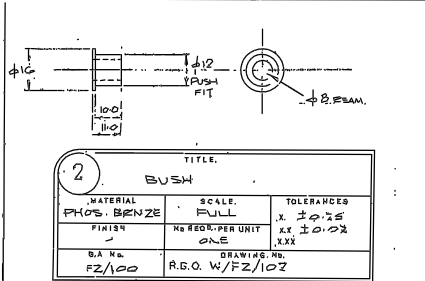
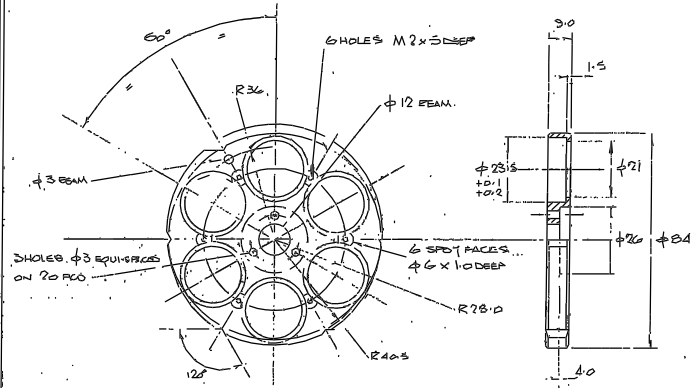
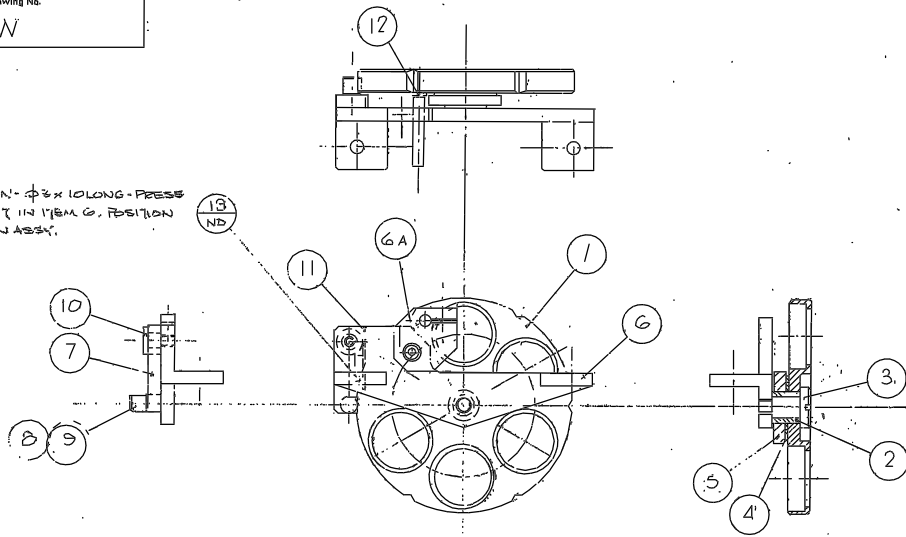
TITLE		DISC REF.	
11 SPRING			
MATERIAL	SCALE	TOLERANCES ±	
PHOS. BRONZE	1:1	0.25	
FINISH	No. REQD. PER UNIT	X.X	
BL. ANODISE	1	X.XX	
G.A. No.	DRAWING No.	DRAWING No.	
RG0	W/FZ/011	W/FZ/011	

DRAWING NUMBER	No. of Sheets	G.A. Item No.	DRAWING TITLE OR COMPONENT NAME	QTY	MATERIAL STOCK OR ORDER No. AND DATE	REMARKS	ISSUE DATE	ISSUED TO	FINISH DATE
W/FZ/101	1	1	FILTER WHEEL	1					
W/FZ/102	1	2	BUSH	1					
W/FZ/103	1	3	SHOULDERED SCREW	1					
W/FZ/104	1	4	PACKING WASHER	1					
W/FZ/105	1	5	DRIVE PULLEY	1	A1-A-T2.5/3L	O (SYNCHROFLEX)			
W/FZ/106	1	6	MOUNTING BRACKET	1					
W/FZ/107	1	7	DETENT ARM	1					
W/FZ/108	1	8	ROLLER	1					
W/FZ/109	1	9	SHOULDERED SCREW	1					
W/FZ/110	1	10	" "	1					
W/FZ/111	1	11	SPRING	1					
W/FZ/112	1	12	SLUG	1					
/		13	PIN	1					
/									
/									
/									
/									
/									
/									
/									
/									
/									
/									
/									
/									
/									
/									
/									
/									
/									
/									
/									
/									
/									
/									
/									
/									
/									
/									
/									
/									
/									
/									
/									
JOB TITLE						ASSY DRG. No.	SHEET No.	DRAWN BY	
FILTER WHEEL SUB-ASSY - AUTOGUIDER - 4.2m AZG						W/FZ 100	1	E. J. S.	
ROYAL GREENWICH OBSERVATORY,						HERSTMONCEUX CASTLE,	HAILSHAM,	SUSSEX	
								DATE	

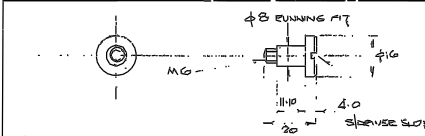
Drawing No.

W

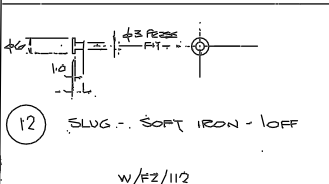
Pin - $\phi 2 \times 10$ LONG - PRESS FIT IN ITEM 6. POSITION ON ASSY.



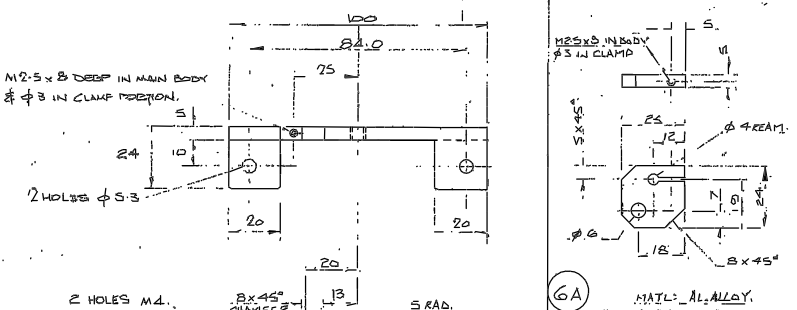
TITLE		
2 BUSH		
MATERIAL	SCALE	TOLERANCES
PHOS. BRNZE	FULL	X ± 0.25
FINISH	NO REQ. PER UNIT	XX ± 0.1
	ONE	XXX ± 0.05
G.A. No.	DRAWING No.	
FZ/100	R.G.O. W/FZ/102	



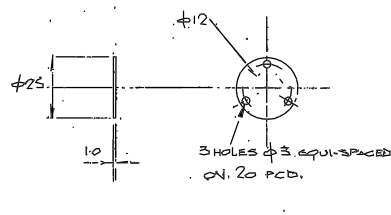
TITLE		
3 SHOULDERED SCREW		
MATERIAL	SCALE	TOLERANCES
ST. STEEL	FULL	X ± 0.25
FINISH	NO REQ. PER UNIT	XX ± 0.1
	ONE	XXX ± 0.05
G.A. No.	DRAWING No.	
FZ/100	R.G.O. W/FZ/103	



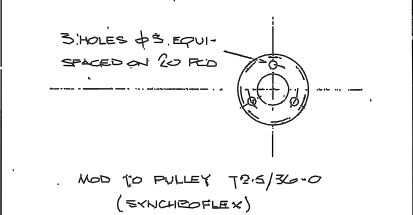
TITLE		
1 FILTER WHEEL		
MATERIAL	SCALE	TOLERANCES
AL. ALLOY	FULL	X ± 0.25
FINISH	NO REQ. PER UNIT	XX ± 0.1
	ONE	XXX ± 0.05
G.A. No.	DRAWING No.	
FZ/100	R.G.O. W/FZ/101	



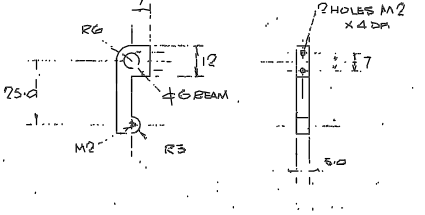
TITLE		
6 MOUNTING BRACKET		
MATERIAL	SCALE	TOLERANCES
AL. ALLOY	FULL	X ± 0.25
FINISH	NO REQ. PER UNIT	XX ± 0.1
	ONE	XXX ± 0.05
G.A. No.	DRAWING No.	
FZ/100	R.G.O. W/FZ/104	



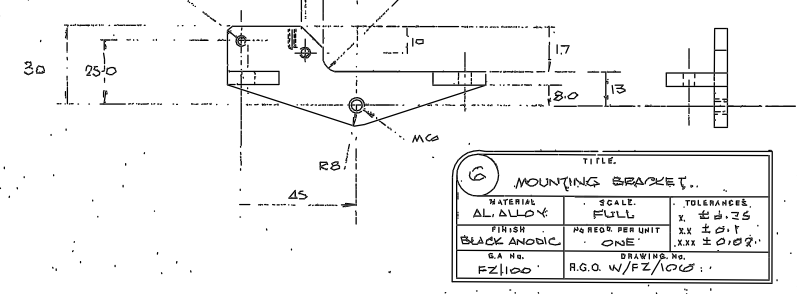
TITLE		
4 PACKING WASHER		
MATERIAL	SCALE	TOLERANCES
AL. ALLOY	FULL	X ± 0.1
FINISH	NO REQ. PER UNIT	XX ± 0.1
	ONE	XXX ± 0.1
G.A. No.	DRAWING No.	
FZ/100	R.G.O. W/FZ/104	



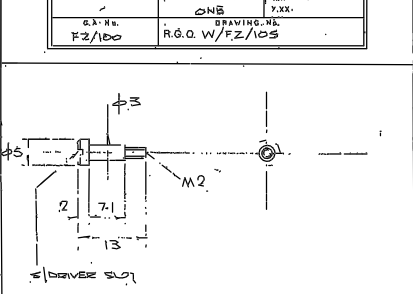
TITLE		
5 DRIVE PULLEY		
MATERIAL	SCALE	TOLERANCES
AL. ALLOY	FULL	X ± 0.1
FINISH	NO REQ. PER UNIT	XX ± 0.1
	ONE	XXX ± 0.1
G.A. No.	DRAWING No.	
FZ/100	R.G.O. W/FZ/105	



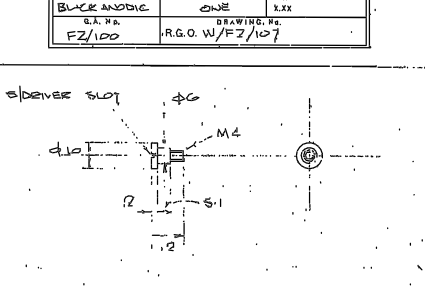
TITLE		
7 DETENT ARM		
MATERIAL	SCALE	TOLERANCES
AL. ALLOY	FULL	X ± 0.25
FINISH	NO REQ. PER UNIT	XX ± 0.1
	ONE	XXX ± 0.1
G.A. No.	DRAWING No.	
FZ/100	R.G.O. W/FZ/107	



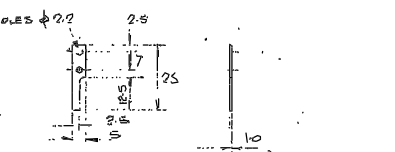
TITLE		
8 ROLLER		
MATERIAL	SCALE	TOLERANCES
ST. STEEL	2X	X ± 0.25
FINISH	NO REQ. PER UNIT	XX ± 0.05
	ONE	XXX ± 0.05
G.A. No.	DRAWING No.	
FZ/100	R.G.O. W/FZ/108	



TITLE		
9 SHOULDERED SCREW		
MATERIAL	SCALE	TOLERANCES
ST. STEEL	2X	X ± 0.25
FINISH	NO REQ. PER UNIT	XX ± 0.05
	ONE	XXX ± 0.05
G.A. No.	DRAWING No.	
FZ/100	R.G.O. W/FZ/108	



TITLE		
10 SHOULDERED EDGE		
MATERIAL	SCALE	TOLERANCES
ST. STEEL	FULL	X ± 0.25
FINISH	NO REQ. PER UNIT	XX ± 0.05
	ONE	XXX ± 0.05
G.A. No.	DRAWING No.	
FZ/100	R.G.O. W/FZ/109	



TITLE		
11 SPRINGS		
MATERIAL	SCALE	TOLERANCES
PHOS. BRNZE	FULL	X ± 0.25
FINISH	NO REQ. PER UNIT	XX ± 0.1
	ONE	XXX ± 0.1
G.A. No.	DRAWING No.	
FZ/100	R.G.O. W/FZ/111	

Tolerances (Unless otherwise stated)				Material		Dimns in m.m.		Scale		THIRD ANGLE PROJECTION		G.A. No.	
X	\pm			SEE 17BA									
XX	\pm			SEE 17EM									
XXX	\pm												
Issue#	Mod. No.	Date	Drawn By	Issue	Mod. No.	Date	Drawn By	Drawn	Used on				
				370106	2143								
													W/FZ/100-112