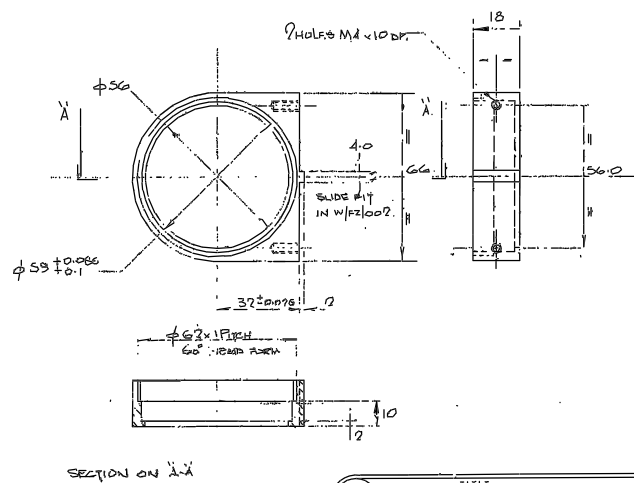
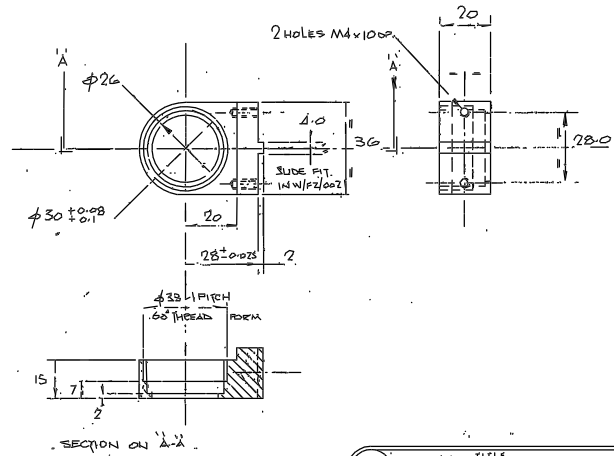


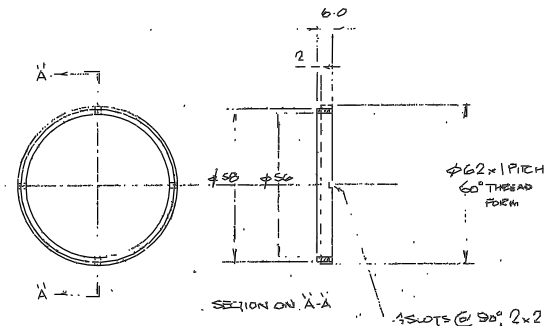
Drawing No. W/FZ/003-008



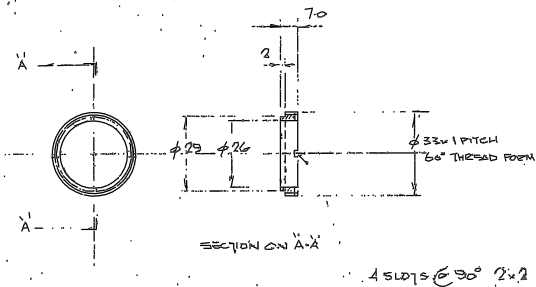
TITLE		
7. LENS HOUSING		
MATERIAL	SCALE	TOLERANCES
FINISH	FULL	X ± 0.25
BLK. ANODIC	NO REQ. PER UNIT	XX ± 0.1
	ONE	XXX ± 0.025
G.A. No.	DRAWING No.	
	R.G.O. W/FZ/003	



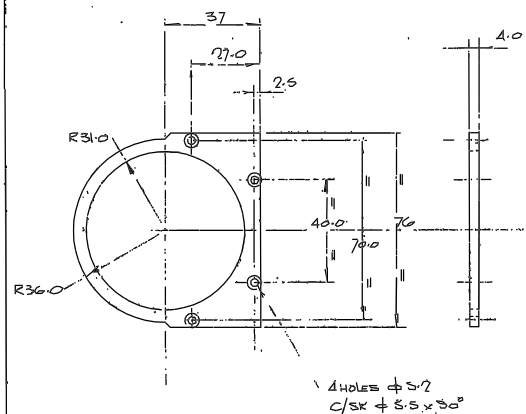
TITLE		
8. LENS HOUSING		
MATERIAL	SCALE	TOLERANCES
FINISH	FULL	X ± 0.25
BLK. ANODIC	NO REQ. PER UNIT	XX ± 0.1
	ONE	XXX ± 0.025
G.A. No.	DRAWING No.	
	R.G.O. W/FZ/004	



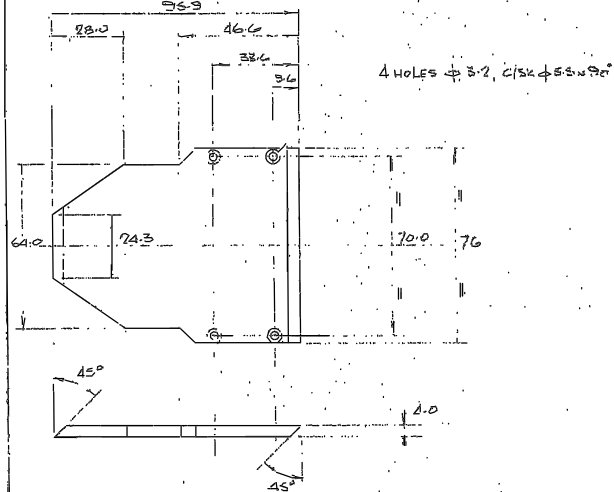
TITLE		
9. LOCKING RING		
MATERIAL	SCALE	TOLERANCES
FINISH	FULL	X ± 0.25
BLK. ANODIC	NO REQ. PER UNIT	XX ± 0.1
	ONE	XXX ± 0.025
G.A. No.	DRAWING No.	
	R.G.O. W/FZ/003	



TITLE		
10. LOCKING RING		
MATERIAL	SCALE	TOLERANCES
FINISH	FULL	X ± 0.25
BLK. ANODIC	NO REQ. PER UNIT	XX ± 0.1
	ONE	XXX ± 0.025
G.A. No.	DRAWING No.	
	R.G.O. W/FZ/006	



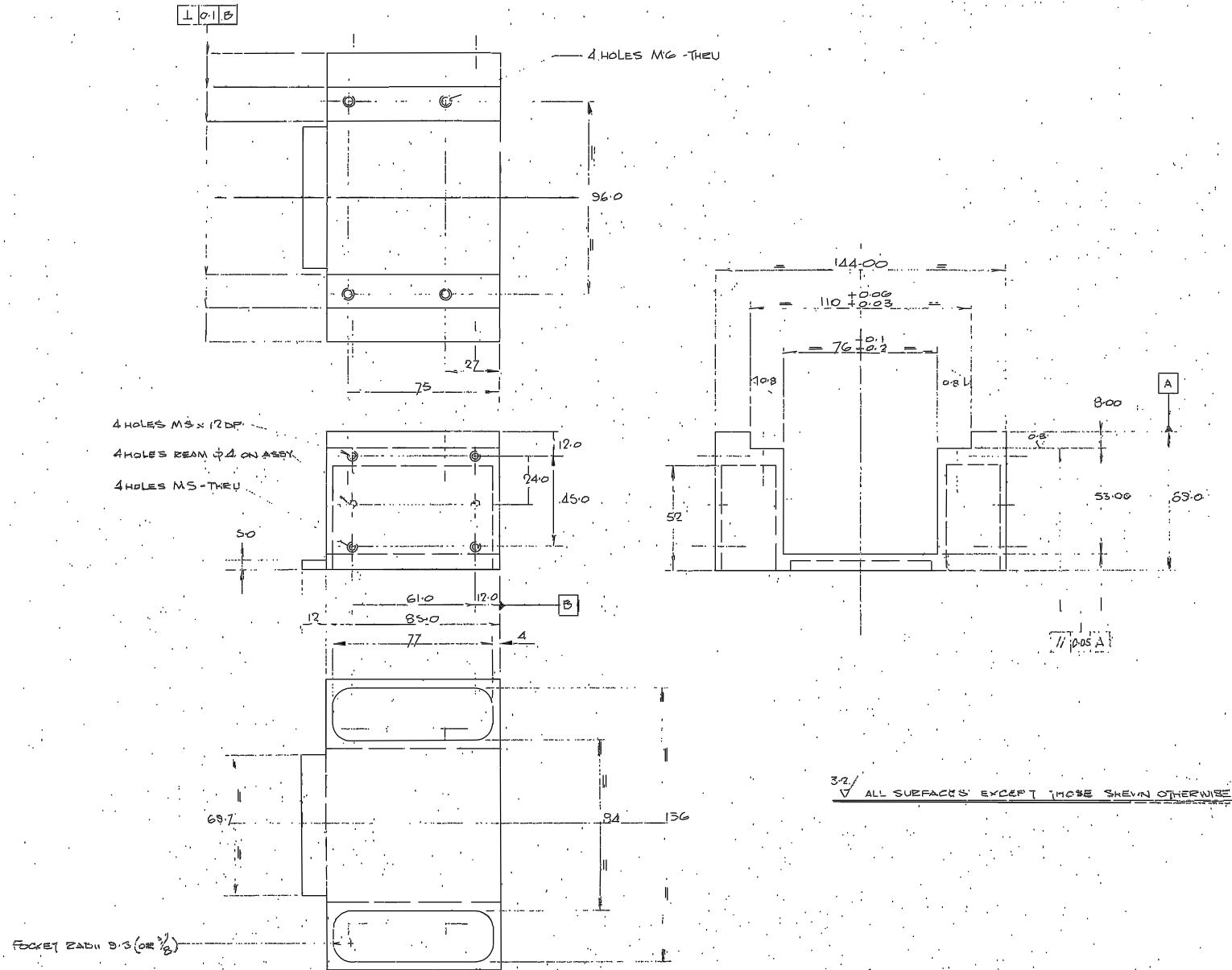
TITLE		
11. PRISM CLAMP PLATE - TOP		
MATERIAL	SCALE	TOLERANCES
FINISH	FULL	X ± 0.25
BLK. ANODIC	NO REQ. PER UNIT	XX ± 0.1
	ONE	XXX ± 0.025
G.A. No.	DRAWING No.	
	R.G.O. W/FZ/007	



TITLE		
12. PRISM CLAMP PLATE - BOTTOM		
MATERIAL	SCALE	TOLERANCES
FINISH	FULL	X ± 0.25
BLK. ANODIC	NO REQ. PER UNIT	XX ± 0.1
	ONE	XXX ± 0.025
G.A. No.	DRAWING No.	
	R.G.O. W/FZ/008	

THIRD ANGLE PROJECTION										Title		G.A. No.					
Issue	Mod. No.	Date	Drawn By	Issd	Mod. No.	Date	Drawn By	SEE ITEM	SEE 172A	Dim in mm	Scale	ROYAL GREENWICH OBSERVATORY, HERSTMONCEUX CASTLE, HAILSHAM SUSSEX.		DETAILS - AUTOGUIDE PRISM ACQUISITION & GUIDE UNIT		W/FZ/003-008	

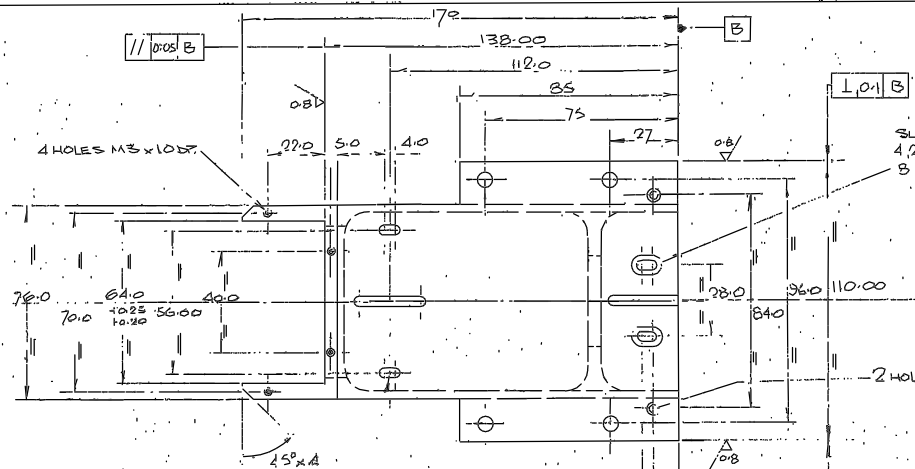
Drawing No.  
W:



Tolerances (Unless otherwise stated):								Material		Dimms in m.m.		Scale: FULL		THIRD ANGLE PROJECTION		G.A. No.	
.X ± 0.25 .XX ± 0.10 .XXX ± 0.05								AL. HP30-TF		ONE		ROYAL GREENWICH OBSERVATORY, HERSTMONCEUX CASTLE, HAILSHAM SUSSEX.		Title: OPTICS MOUNT CRADLE - AUTOGUIDER <del>RELAY</del> 4.2m ACQUISITION & GUIDER UNIT		Drawing No. W/FZ/052	
Issue	Mod. No.	Date	Drawn By	Issue	Mod. No.	Date	Drawn By	Used on									

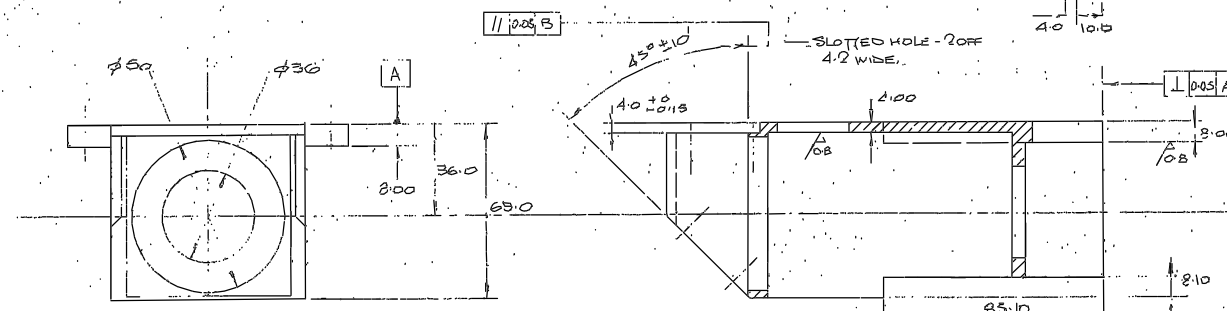
Drawing No.

W

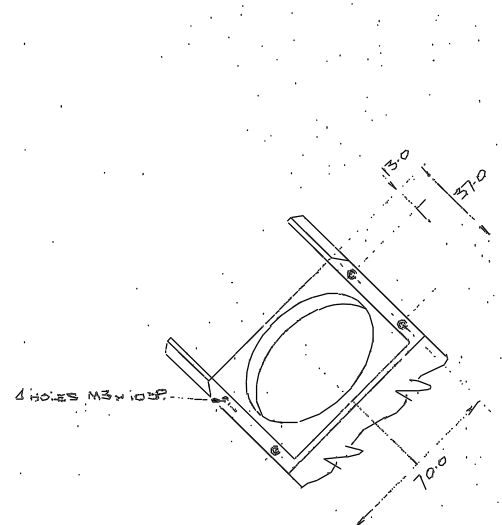


SLOTTED HOLES - 2 OFF  
4.2 WIDE, C/BORE  
B WIDE x 5 DEEP

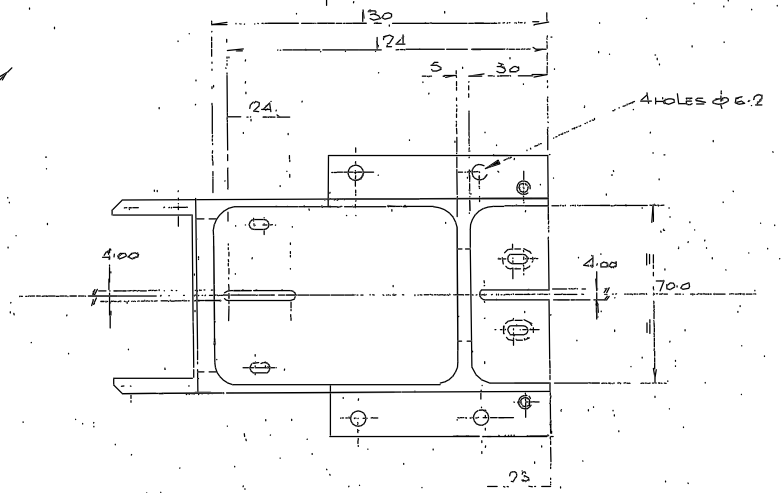
2 HOLES M5



SLOTTED HOLE - 2 OFF  
4.2 WIDE



4 HOLES M3 x 10.5F

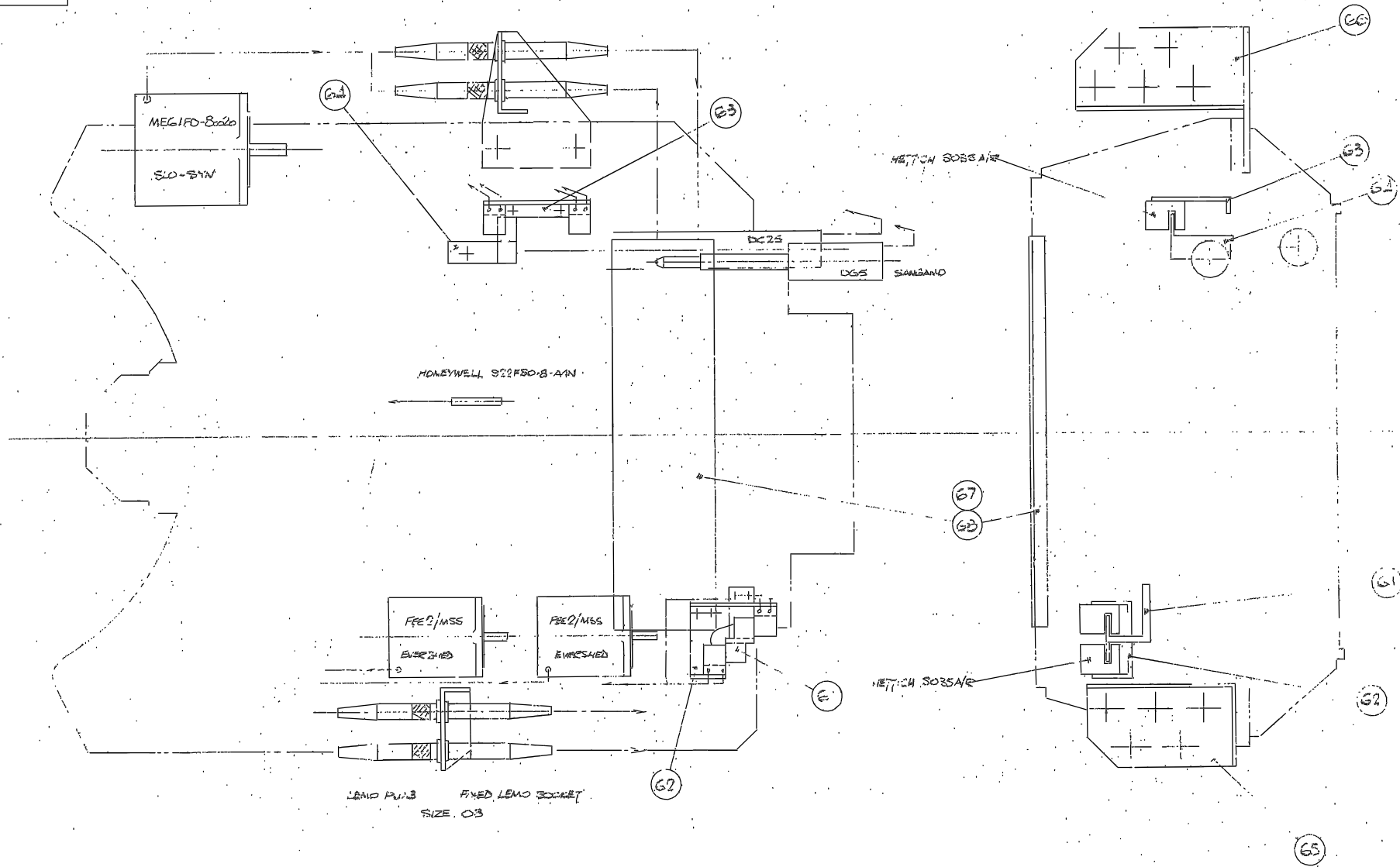


4 HOLES  $\phi$  6.2

3/2 ALL SURFACES EXCEPT THOSE SHOWN OTHERWISE

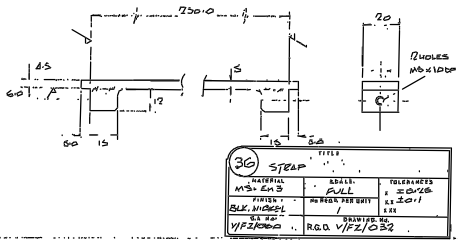
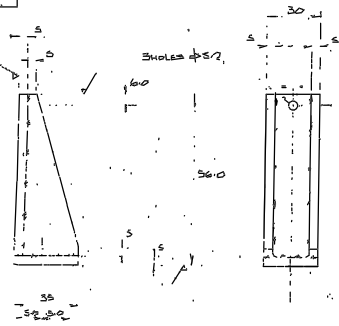
NOTE - ALL SOCKET HEADS 9.5 (OR  $\frac{3}{8}$ )

Tolerances (Unless otherwise stated)				Material		Dim's in m.m.		Scale		THIRD ANGLE PROJECTION		G.A. No.	
X ±				AL, HP30-TF		ONE		ALL		ROYAL GREENWICH OBSERVATORY,		Drawing No.	
XY ±				Finish		Drg. No. No. Req.		ROYAL GREENWICH OBSERVATORY,		HERSTMONCEUX CASTLE,		W/FZ/051	
XXX ±				BLACK ANODIC		Used on:		HALSHAM		SUSSEX		THIS: OPTICS MOUNT - AUTOGUIDER PROBE 4.7W ACQUISITION & GUIDE UNIT	
Issue	Mod. No.	Date	Drawn By	Issue	Mod. No.	Date	Drawn By						

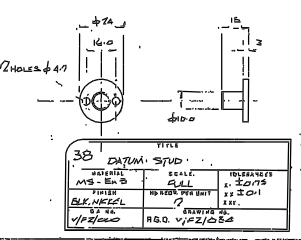


NOTE! THIS DRAWING MUST BE READ WITH G.A. DEG. V/FZ/050

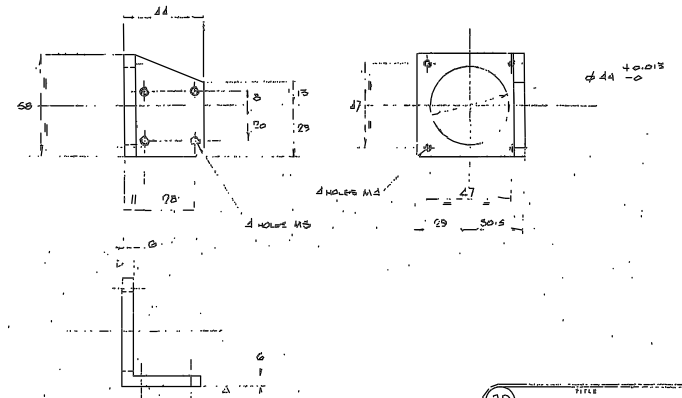
				Tolerances (Unless otherwise stated)		Material		Dimas in mm		Scale: FULL		THIRD ANGLE PROJECTION		G.A. No.	
				X ±		—		ROYAL GREENWICH OBSERVATORY,				Title		Drawing No.	
				XX ±		Finish		HERSTMONGUEUX CASTLE,				ELECTRONICS COMPONENTS UNIT - AUTOGUVER			
				XXX ±		Used on		HALLSHAM SUSSEX.				PROJ. - 412.01 A/B UNIT		W/FZ/050	
Issue	Mod. No.	Date	Drawn By	Issue	Mod. No.	Date	Drawn By								



36 STEAP			
MATERIAL	SCALE	TOLERANCES	
MS - EN 8	FULL	± 0.05	
FINISH	REFER PER UNIT	± 0.1	
BLK. MODEL		SEE	
BY	DATE	REVISIONS	
V/FZ/000	R.G. V/FZ/032		



38 DYNAM. STUD			
MATERIAL	SCALE	TOLERANCES	
MS - EN 8	FULL	± 0.05	
FINISH	REFER PER UNIT	± 0.1	
BLK. MODEL		SEE	
BY	DATE	REVISIONS	
V/FZ/000	R.G. V/FZ/032		

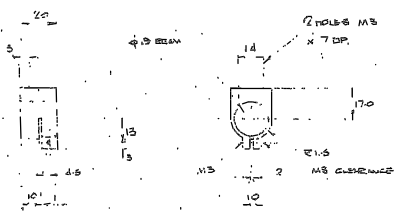


39 DISPLACEMENT DET. MOUNT			
MATERIAL	SCALE	TOLERANCES	
MS - EN 8	FULL	± 0.05	
FINISH	REFER PER UNIT	± 0.1	
BLK. MODEL		SEE	
BY	DATE	REVISIONS	
V/FZ/000	R.G. V/FZ/033		

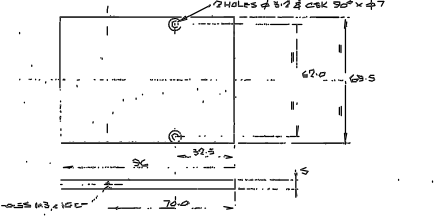
35 BRACKET			
MATERIAL	SCALE	TOLERANCES	
MS - EN 8	FULL	± 0.05	
FINISH	REFER PER UNIT	± 0.1	
BLK. MODEL		SEE	
BY	DATE	REVISIONS	
V/FZ/000	R.G. V/FZ/033		

37 TIE ROD			
MATERIAL	SCALE	TOLERANCES	
MS - EN 8	FULL	± 0.05	
FINISH	REFER PER UNIT	± 0.1	
BLK. MODEL		SEE	
BY	DATE	REVISIONS	
V/FZ/000	R.G. V/FZ/033		

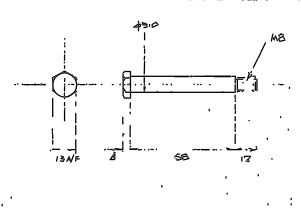
41 LVD7 ADJUSTABLE MOUNT			
MATERIAL	SCALE	TOLERANCES	
AL - HP 30	FULL	± 0.05	
FINISH	REFER PER UNIT	± 0.1	
BLK. MODEL		SEE	
BY	DATE	REVISIONS	
V/FZ/000	R.G. V/FZ/037		



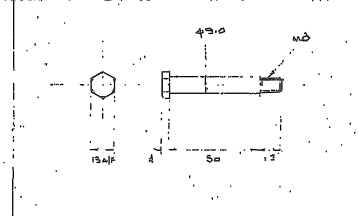
40 LVD7 MOUNT			
MATERIAL	SCALE	TOLERANCES	
MS - EN 8	FULL	± 0.05	
FINISH	REFER PER UNIT	± 0.1	
BLK. MODEL		SEE	
BY	DATE	REVISIONS	
V/FZ/000	R.G. V/FZ/036		



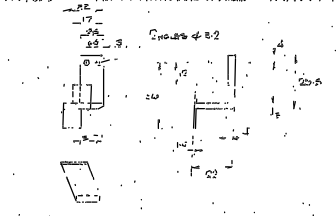
42 CLOSING PLATE AS PROBE			
MATERIAL	SCALE	TOLERANCES	
AL - HP 30	FULL	± 0.05	
FINISH	REFER PER UNIT	± 0.1	
BLK. MODEL		SEE	
BY	DATE	REVISIONS	
V/FZ/000	R.G. V/FZ/038		



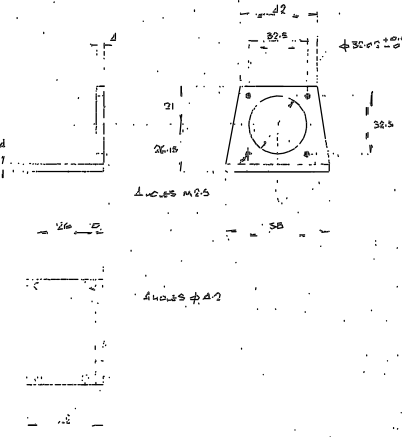
59 SPECIAL BOLT			
MATERIAL	SCALE	TOLERANCES	
SPANDEX	FULL	± 0.05	
FINISH	REFER PER UNIT	± 0.1	
BLK. MODEL		SEE	
BY	DATE	REVISIONS	
V/FZ/000	R.G. V/FZ/040		



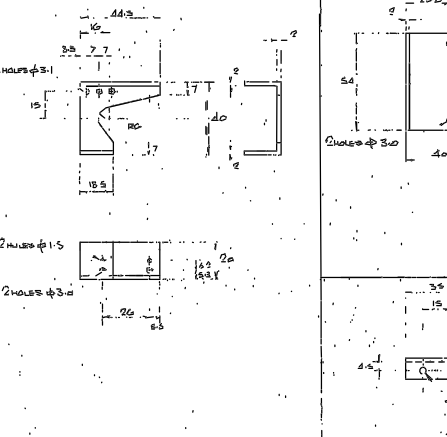
60 SPECIAL BOLT			
MATERIAL	SCALE	TOLERANCES	
SPANDEX	FULL	± 0.05	
FINISH	REFER PER UNIT	± 0.1	
BLK. MODEL		SEE	
BY	DATE	REVISIONS	
V/FZ/000	R.G. V/FZ/041		



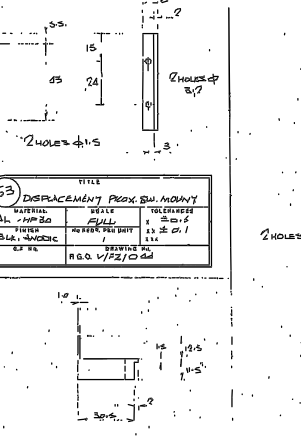
61 ALUM. PROX. SW. FLAG			
MATERIAL	SCALE	TOLERANCES	
AL - HP 30	FULL	± 0.05	
FINISH	REFER PER UNIT	± 0.1	
BLK. MODEL		SEE	
BY	DATE	REVISIONS	
V/FZ/000	R.G. V/FZ/042		



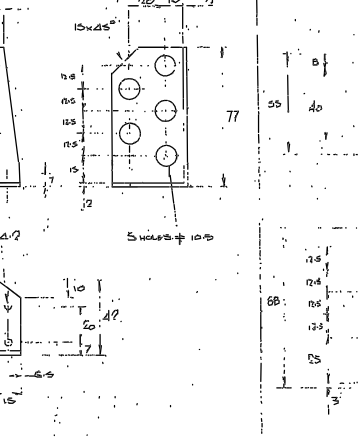
43 ALUM. DRIVE ADJUST. MOUNT			
MATERIAL	SCALE	TOLERANCES	
AL - HP 30	FULL	± 0.05	
FINISH	REFER PER UNIT	± 0.1	
BLK. MODEL		SEE	
BY	DATE	REVISIONS	
V/FZ/000	R.G. V/FZ/039		



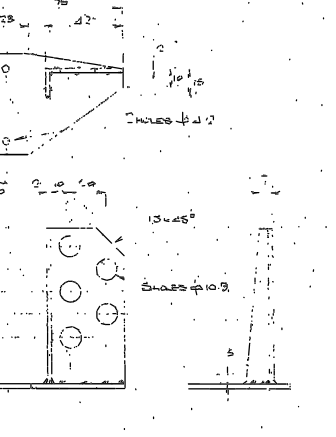
62 ALUM. PROX. SW. MOUNT			
MATERIAL	SCALE	TOLERANCES	
AL - HP 30	FULL	± 0.05	
FINISH	REFER PER UNIT	± 0.1	
BLK. MODEL		SEE	
BY	DATE	REVISIONS	
V/FZ/000	R.G. V/FZ/043		



63 DISPLACEMENT PROX. SW. MOUNT			
MATERIAL	SCALE	TOLERANCES	
AL - HP 30	FULL	± 0.05	
FINISH	REFER PER UNIT	± 0.1	
BLK. MODEL		SEE	
BY	DATE	REVISIONS	
V/FZ/000	R.G. V/FZ/044		



65 LEMO CONNECTOR MOUNT			
MATERIAL	SCALE	TOLERANCES	
AL - HP 30	FULL	± 0.05	
FINISH	REFER PER UNIT	± 0.1	
BLK. MODEL		SEE	
BY	DATE	REVISIONS	
V/FZ/000	R.G. V/FZ/045		



66 LEAD CONNECTOR MOUNT			
MATERIAL	SCALE	TOLERANCES	
AL - HP 30	FULL	± 0.05	
FINISH	REFER PER UNIT	± 0.1	
BLK. MODEL		SEE	
BY	DATE	REVISIONS	
V/FZ/000	R.G. V/FZ/047		

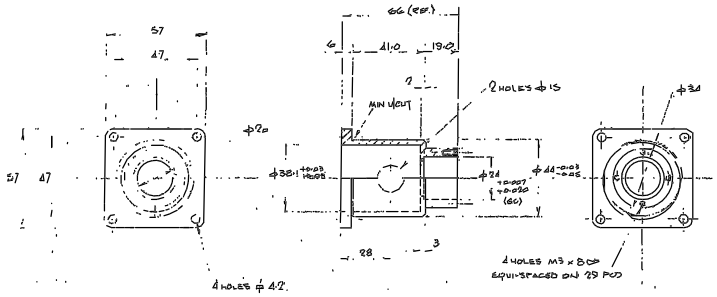
Issue	Mod. No.	Date	Drawn By	Issue	Mod. No.	Date	Drawn By

Tolerances (Unless otherwise stated)	Material	Dim. in 10.0mm	Scale
XX ± 0.05			
XXX ± 0.1			
Finish	Drawn	Checked	Used for

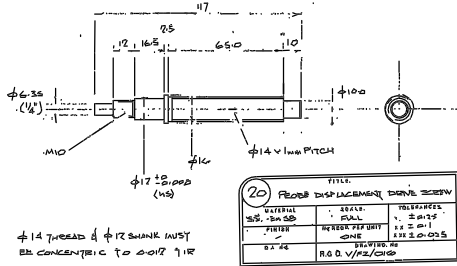
ROYAL GREENWICH OBSERVATORY,  
HERSTMONCEUX CASTLE,  
HAILSHAM .SUSSEX.

THIRD-ANGLE PROJECTION.  
DETAILS - AUTOGUIDE SYSTEM.  
42m ACQUISITION & GUIDE UNIT

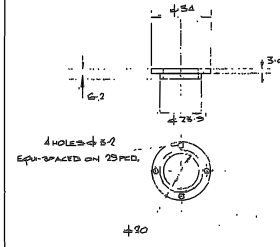
GA No  
Drawing No.  
V/FZ/031-047



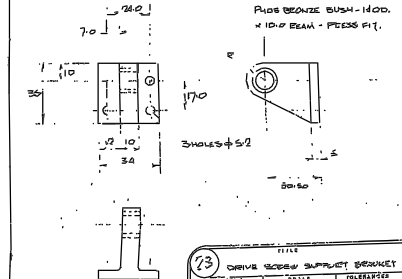
19 MOTOR MOUNT / BEARING HOUSING			
MATERIAL	SCALE	TOLERANCES	
M.S. - EN 8	FULL	FULL	$\pm 0.25$
FINISH	REFER PER DIT	ONE	$\pm 0.1$
DRAWN BY	ONE		$\pm 0.25$
ST. NO.	REVISED TO		
	R.G.O. V/FZ/028		



20 PROBE DISPLACEMENT DRIVE SCREW			
MATERIAL	SCALE	TOLERANCES	
AL - HP 30	FULL	FULL	$\pm 0.25$
FINISH	REFER PER DIT	ONE	$\pm 0.1$
BLACK ANODIC	ONE		$\pm 0.25$
ST. NO.	REVISED TO		
	R.G.O. V/FZ/028		

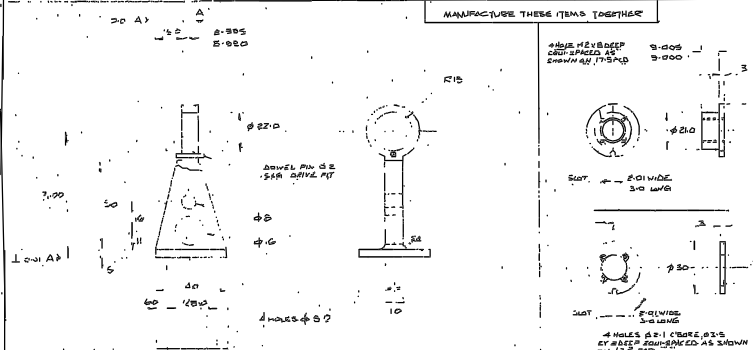


21 WASHER			
MATERIAL	SCALE	TOLERANCES	
M.S. - EN 8	FULL	FULL	$\pm 0.25$
FINISH	REFER PER DIT	ONE	$\pm 0.1$
BLACK ANODIC	ONE		$\pm 0.25$
ST. NO.	REVISED TO		
	R.G.O. V/FZ/028		

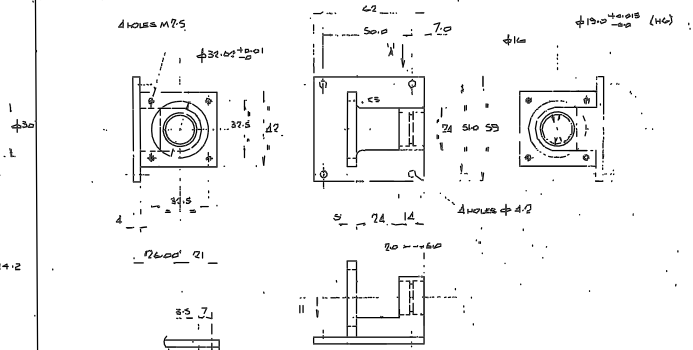


73 DRIVE SCREW SUPPORT BRACKET			
MATERIAL	SCALE	TOLERANCES	
AL - HP 30	FULL	FULL	$\pm 0.25$
FINISH	REFER PER DIT	ONE	$\pm 0.1$
BLACK ANODIC	ONE		$\pm 0.25$
ST. NO.	REVISED TO		
	R.G.O. V/FZ/028		

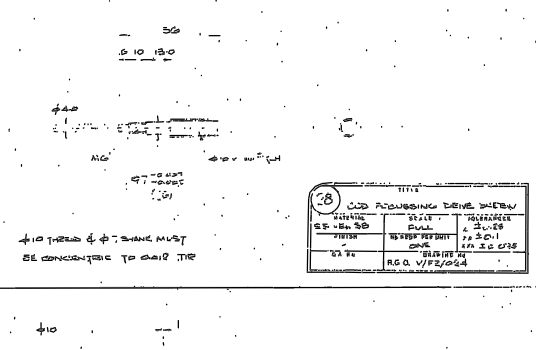
74 DRIVE SCREW SUPPORT BRACKET			
MATERIAL	SCALE	TOLERANCES	
AL - HP 30	FULL	FULL	$\pm 0.25$
FINISH	REFER PER DIT	ONE	$\pm 0.1$
BLACK ANODIC	ONE		$\pm 0.25$
ST. NO.	REVISED TO		
	R.G.O. V/FZ/028		



25 DRIVE SCREW			
MATERIAL	SCALE	TOLERANCES	
M.S. - EN 8	FULL	FULL	$\pm 0.25$
FINISH	REFER PER DIT	ONE	$\pm 0.1$
DRAWN BY	ONE		$\pm 0.25$
ST. NO.	REVISED TO		
	R.G.O. V/FZ/028		



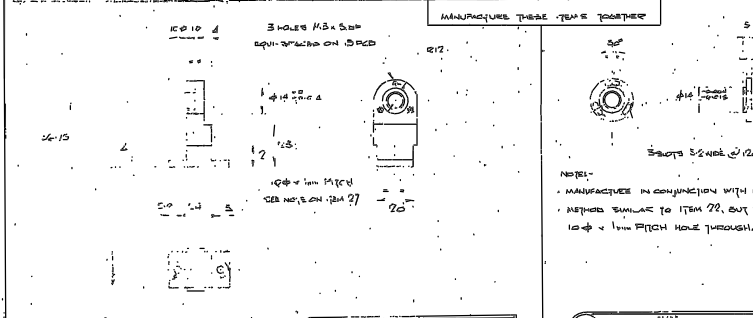
26 NUT & WASHER			
MATERIAL	SCALE	TOLERANCES	
M.S. - EN 8	FULL	FULL	$\pm 0.25$
FINISH	REFER PER DIT	ONE	$\pm 0.1$
DRAWN BY	ONE		$\pm 0.25$
ST. NO.	REVISED TO		
	R.G.O. V/FZ/028		



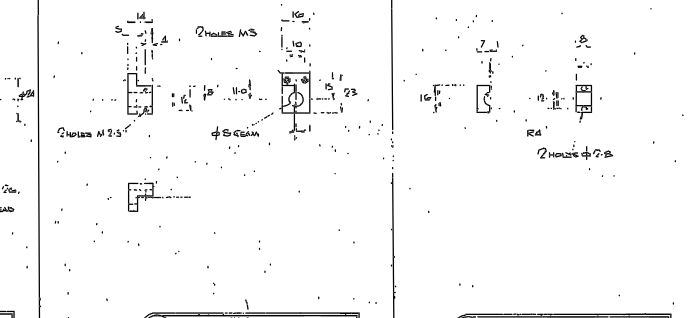
27 MOTOR MOUNT / BEARING HOUSING			
MATERIAL	SCALE	TOLERANCES	
AL - HP 30	FULL	FULL	$\pm 0.25$
FINISH	REFER PER DIT	ONE	$\pm 0.1$
BLACK ANODIC	ONE		$\pm 0.25$
ST. NO.	REVISED TO		
	R.G.O. V/FZ/028		

28 LVD OPERATING DRIVE SCREW			
MATERIAL	SCALE	TOLERANCES	
M.S. - EN 8	FULL	FULL	$\pm 0.25$
FINISH	REFER PER DIT	ONE	$\pm 0.1$
DRAWN BY	ONE		$\pm 0.25$
ST. NO.	REVISED TO		
	R.G.O. V/FZ/028		

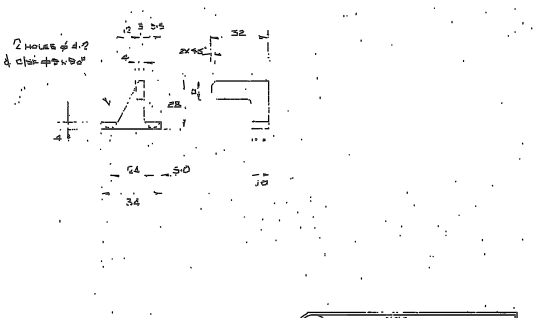
29 WASHER			
MATERIAL	SCALE	TOLERANCES	
M.S. - EN 8	FULL	FULL	$\pm 0.25$
FINISH	REFER PER DIT	ONE	$\pm 0.1$
DRAWN BY	ONE		$\pm 0.25$
ST. NO.	REVISED TO		
	R.G.O. V/FZ/028		



30 FOCUSING DRIVE ARM			
MATERIAL	SCALE	TOLERANCES	
M.S. - EN 8	FULL	FULL	$\pm 0.25$
FINISH	REFER PER DIT	ONE	$\pm 0.1$
DRAWN BY	ONE		$\pm 0.25$
ST. NO.	REVISED TO		
	R.G.O. V/FZ/028		

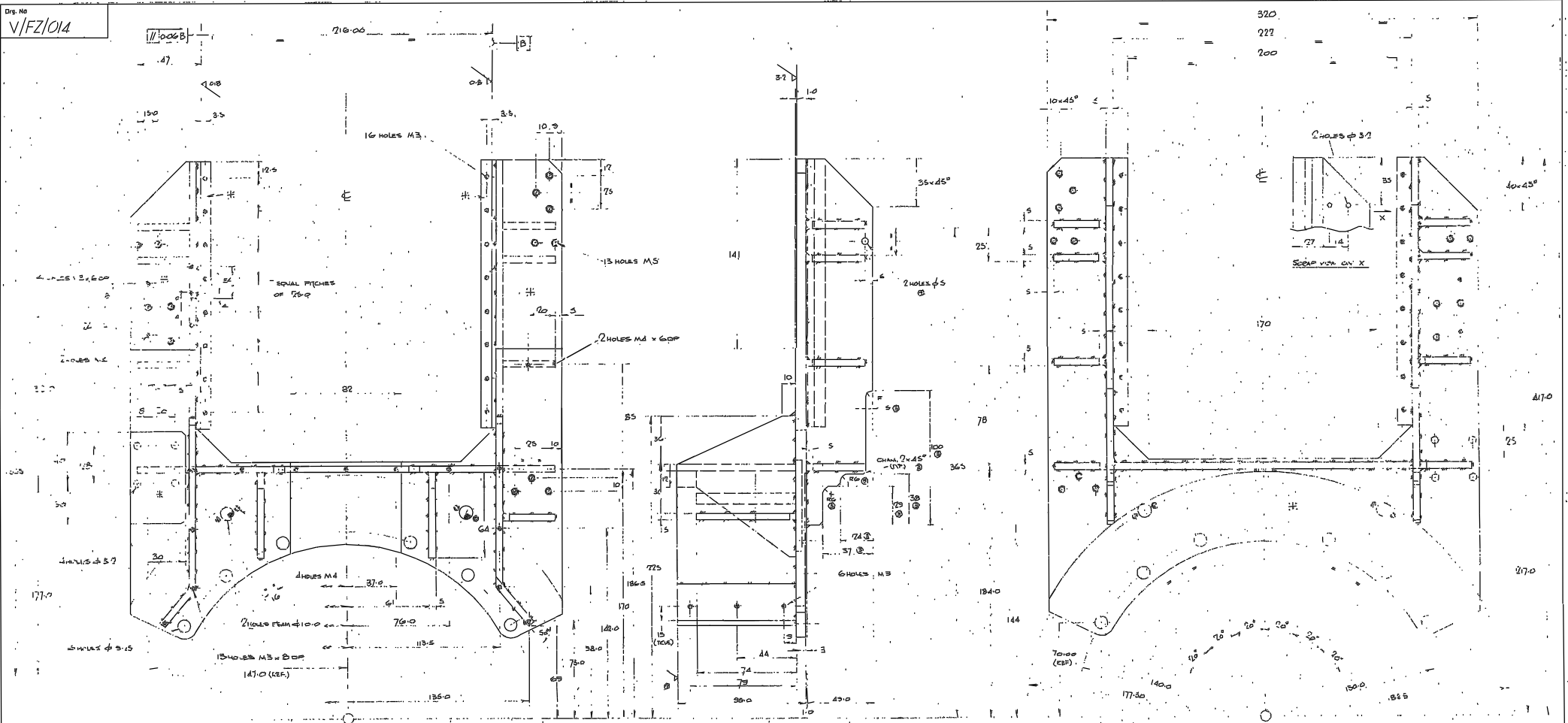


31 ANTI-BACKLASH NUT			
MATERIAL	SCALE	TOLERANCES	
M.S. - EN 8	FULL	FULL	$\pm 0.25$
FINISH	REFER PER DIT	ONE	$\pm 0.1$
DRAWN BY	ONE		$\pm 0.25$
ST. NO.	REVISED TO		
	R.G.O. V/FZ/028		

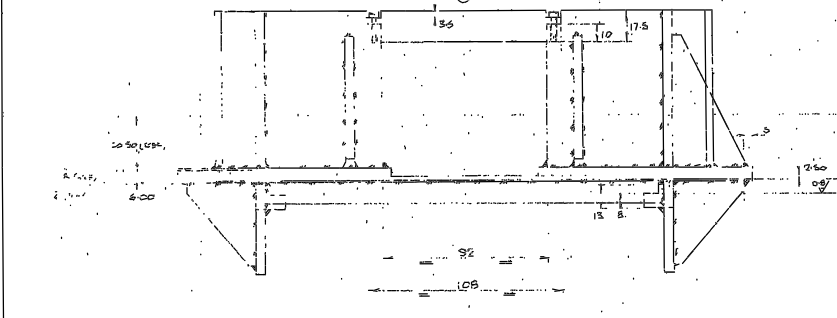


33 LVD CLAMP			
MATERIAL	SCALE	TOLERANCES	
AL - HP 30	FULL	FULL	$\pm 0.25$
FINISH	REFER PER DIT	ONE	$\pm 0.1$
BLACK ANODIC	ONE		$\pm 0.25$
ST. NO.	REVISED TO		
	R.G.O. V/FZ/028		

34 LVD OPERATING ARM			
MATERIAL	SCALE	TOLERANCES	
AL - HP 30	FULL	FULL	$\pm 0.25$
FINISH	REFER PER DIT	ONE	$\pm 0.1$
BLACK ANODIC	ONE		$\pm 0.25$
ST. NO.	REVISED TO		
	R.G.O. V/FZ/028		



320.  
222  
200



- NOTES ON MANUFACTURE**
1. a) REPAIR GRIND & METAL ARC WELD.
  - b) SPRAY BLUE WASH AFTER WELDING.
  - c) SAND BLAST IF NECESSARY & DEBRIS CLEAN.
  - d) MACHINE.
  - e) DEGRASS (CHEMICAL CLEAN).
  - f) PHOSPHATE TO DEF. ZN.
  - g) MASK MACHINED ACES MARKED THIS #.
  - h) SPRAY 2 COATS RED OXIDE PRIMER.
  - i) SPRAY 2 COATS UNDERCOAT.
  - j) SPRAY 2 COATS MATT BLACK FINISH.
  - k. d MAX FILLET WELD THROUGHOUT

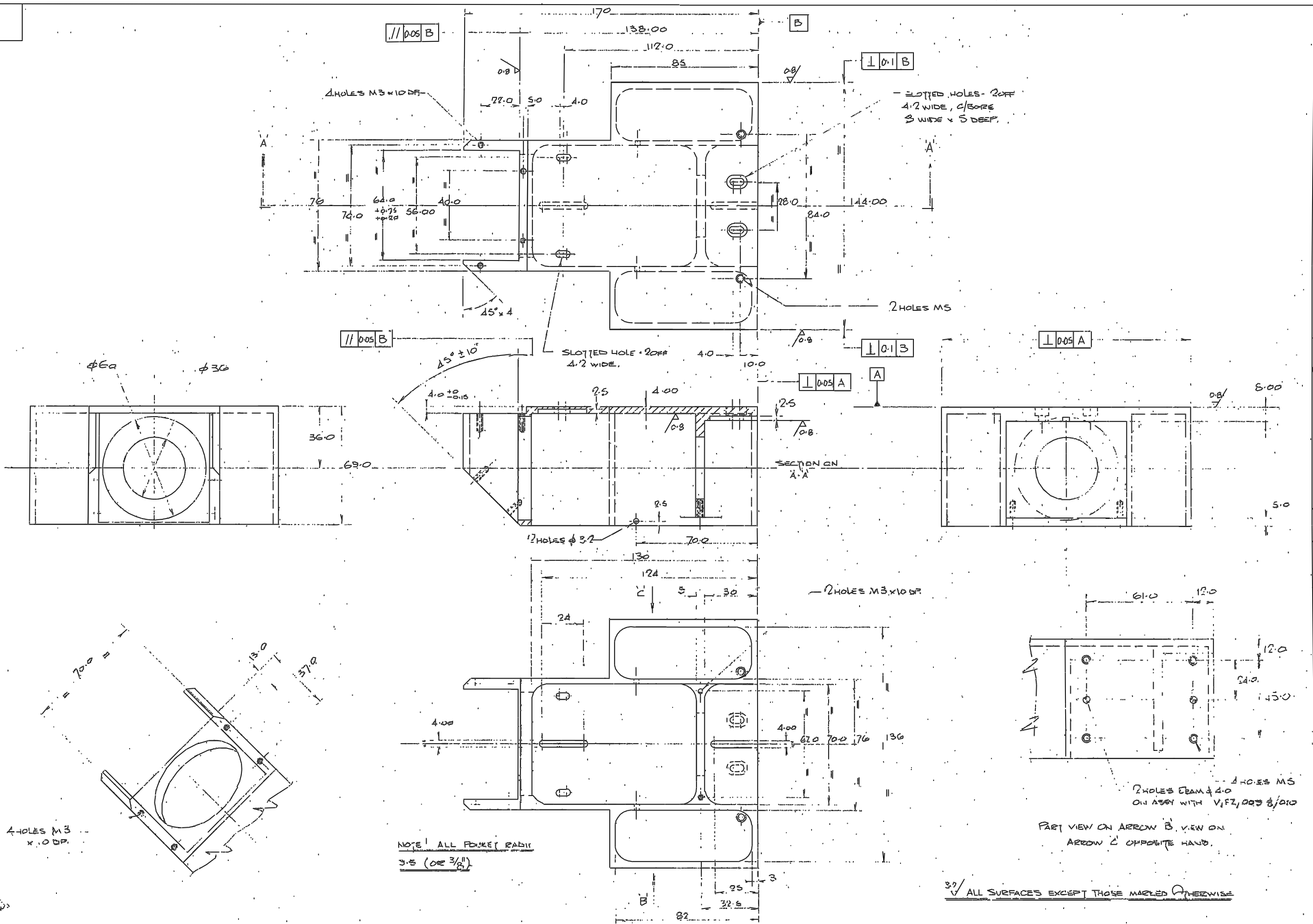
IMPROVE DETAIL GRIND IN THIS VIEW

3		370302	ENL.	Tolerances (Unless otherwise stated) X 1.0/± XX 1.0/± XXX 1.0/±0.25	Material MILD STEEL S34360-43A	Dimm. in in. m.	Scale FULL	THIRD ANGLE PROJECTION	G.A. No.
2		370307	ENL.						
-		360006	ENL.						
Instn.	Mod. No.	Date	Drawn By	Instn.	Mod. No.	Date	Drawn By	ROYAL GREENWICH OBSERVATORY, HERSTMONCEUX CASTLE, HAILSHAM SUSSEX	Title SUPPORT FRAME - AUTOGUIDE ASSY. A.P.M. ACQUISITION & GUIDE UNIT









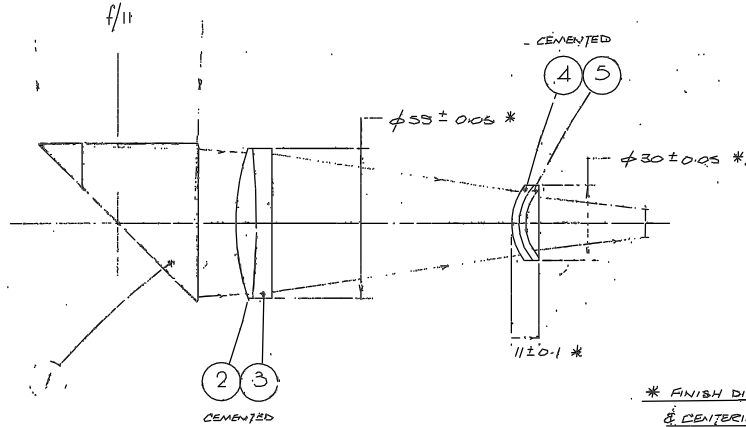
NOTE: ALL DIMS IN mm  
3.5 (OR 3/8)

30/ ALL SURFACES EXCEPT THOSE MARKED OTHERWISE

5  
W = 0.77

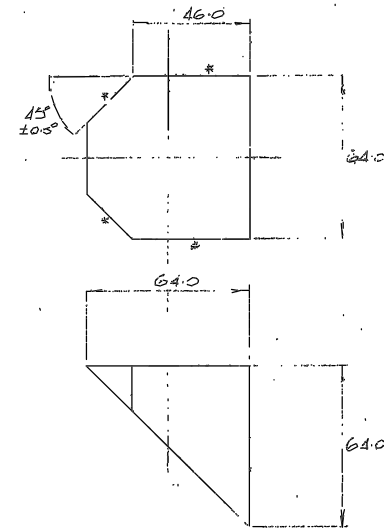
				Tolerances (Unless otherwise stated)				Material		Dimms in m.m.		Scale FULL		THIRD ANGLE PROJECTION				GA No. W/FZ1	
				X ± 0.25				AL. HP30-17		ONE		ROYAL GREENWICH OBSERVATORY,		Title				Drawing No.	
				XX ± 0.10				Finish		Dwg. No.		HERSTMONCEUX CASTLE,		OPTICS MOUNT - AUTOGUIDER PROBE				W/FZ/002	
				XXX ± 0.025				BLACK ANODISE		Used on		HAILSHAM		4.2m ACQUISITION & GUIDE UNIT					
Issue	Mod. No.	Date	Drawn By	Issue	Mod. No.	Date	Drawn By												
					020915	01/13													

Drawing No.  
V1/FZ/001



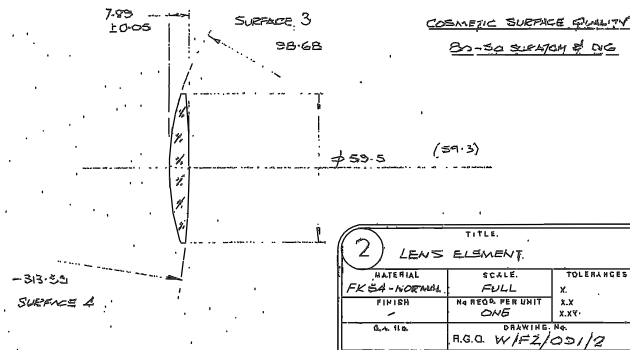
ARRANGEMENT OF OPTICAL SYSTEM

\* FINISH DIMENSIONS AFTER CEMENTING & CENTERING. SURFACE TO BE FINE GRAY.

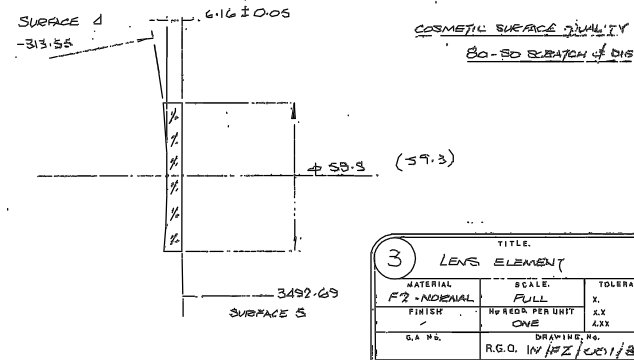


FLATNESS: 0.02 @ 545.1mm OVER  
CENTRAL 50% OF EDGE DIA.  
ANGLES: ± 1 ARC MIN.  
COSMETIC SURFACE QUALITY: 80-50  
SCRAATCH & DIG.  
APEX BEVEL WIDTH: 0.15  
SUBSTRATE MOUNTED ON P-12 WEST

TITLE		
1 RIGHT ANGLE PRISM (T.P)		
MATERIAL	SCALE	TOLERANCES
UBK7-NORMAL	FULL	X
FINISH	NO REQ. PER UNIT ONE	XX ± 0.15
G.A. No.	DRAWING No.	XXX
	R.G.O. W/FZ/001/1	



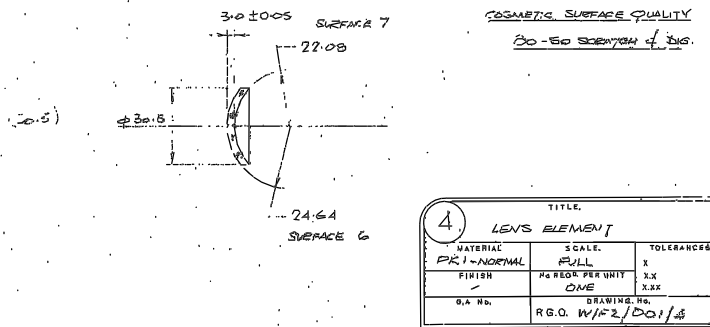
TITLE		
2 LENS ELEMENT		
MATERIAL	SCALE	TOLERANCES
FK84-NORMAL	FULL	X
FINISH	NO REQ. PER UNIT ONE	XX
G.A. No.	DRAWING No.	XXX
	R.G.O. W/FZ/001/2	



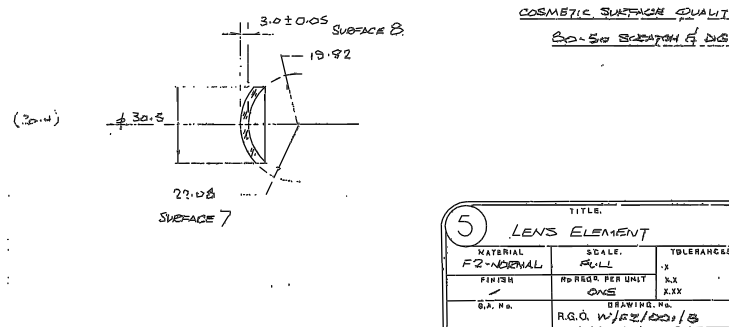
TITLE		
3 LENS ELEMENT		
MATERIAL	SCALE	TOLERANCES
F2-NORMAL	FULL	X
FINISH	NO REQ. PER UNIT ONE	XX
G.A. No.	DRAWING No.	XXX
	R.G.O. W/FZ/001/3	

SURFACE NO.	RADIUS OF CURVATURE	SEPARATION	MATERIAL	CLEAR DIA.
1	∞	64.00	UBK7	61.2
2	∞	15.00	AIR	37.2
3	98.68	7.89	FK84	58.2
4	-313.55	6.16	F2	58.2
5	3492.69	33.82	AIR	58.2
6	24.64	3.00	FK1	24.5
7	22.08	2.00	F2	22.8
8	13.87	46.02	AIR	21.2
9			FOCAL SURFACE	10.8

- NOTES
- GLASS TYPES REFER TO SCHOTT GLASSES.
  - AIR TO GLASS SURFACES TO BE TO A TRUE SPHERE TO WITHIN 1/2 μm & TO MATCH TEST PLATES TO 2-3 RINGS @ 500 μm.
  - CEMENTED SURFACES SHOULD BE WITHIN 1 FRINGE OF NEAREST TRUE SPHERE.
  - LENSES TO BE COATED BY RGO AT APPROXIMATE STAGE OF MANUFACTURE.
  - OPTICAL CEMENT MUST BE UV TRANSMITTING.
  - DESIGN WILL BE OPTIMISED BY TOOL FITTING WHEN THE MANUFACTURE IS KNOWN.



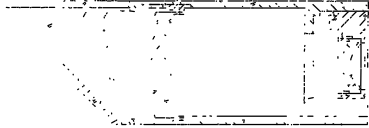
TITLE		
4 LENS ELEMENT		
MATERIAL	SCALE	TOLERANCES
PK1-NORMAL	FULL	X
FINISH	NO REQ. PER UNIT ONE	XX
G.A. No.	DRAWING No.	XXX
	R.G.O. W/FZ/001/4	



TITLE		
5 LENS ELEMENT		
MATERIAL	SCALE	TOLERANCES
F2-NORMAL	FULL	X
FINISH	NO REQ. PER UNIT ONE	XX
G.A. No.	DRAWING No.	XXX
	R.G.O. W/FZ/001/5	

Tolerances (Unless otherwise stated)				Material		Dimms in m.m.		Scale FULL		THIRD ANGLE PROJECTION		G.A. No.	
X	±			Finish	SEE ITEMS	Drwg. No.	No. Req.	ROYAL GREENWICH OBSERVATORY, HERSTMONCEUX CASTLE, HAILSHAM	SUSSEX.	Title	ANTISUBMER PROBE OPTICS - 4.2m ACQUISITION & GUIDE UNIT	Drawing No.	V1/FZ/001
XX	±			Issue	SEE ITEMS	Used on							

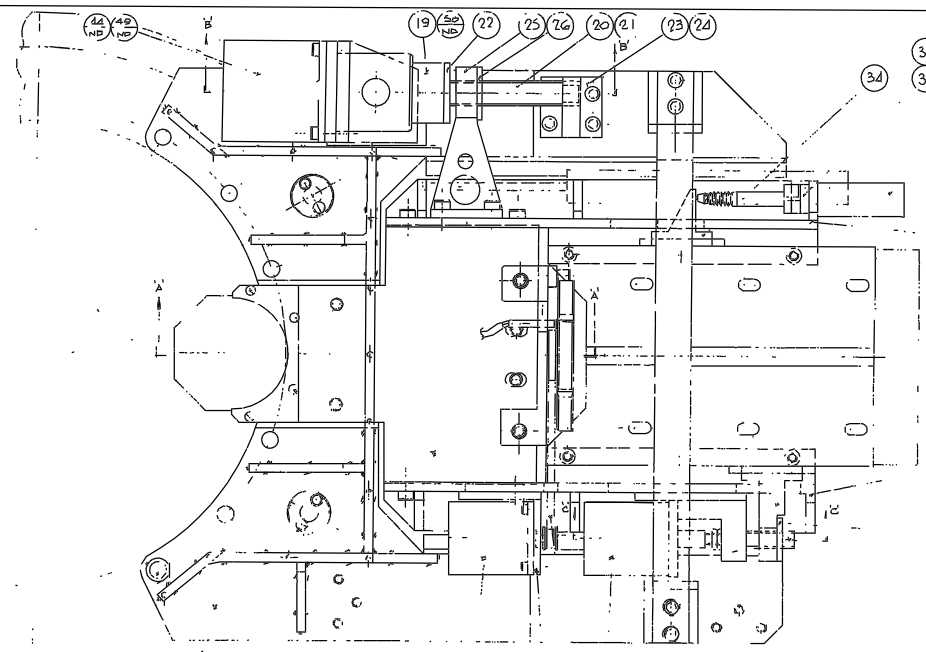
1 11 (7) 9 6 (8) 10



3 22 4.5

CHANGES TO WHEEL ASSEMBLY

Changes to wheel carrier & support



33 32 34

35

13

WHEEL ASSEMBLY  
W/FZ/100

14

30

31

28 29

27 31

30 13 38

19 27 28 29 30 31 32 33 34

CCD AUTOGUIDE HEAD (REV)

36

38

15 16 17 18 19 20 21 22 23 24 25 26 27 28 29 30 31 32 33 34 35 36 37 38 39 40

SECTION ON A-A

© SVA, 2001

REFER TO W/FZ/000 FOR DETAILS OF SUPPORTING STRUCTURES  
CONSTRUCTION DETAILS & PRIMARY SURVIVAL MOUNTING

						Tolerances (Unless otherwise stated)		Material		Drawn in m.m.		Scale FULL SIZE		THIRD ANGLE PROJECTION		G.A. No.	
						X 1				Drig No		No Req		Title		Drawing No.	
						XX 1				Used on				6A - CCD AUTOGUIDE ASSEMBLY - 2 <sup>ND</sup> ACQUISITION of		W/FZ/000	
						XXX 1				ROYAL GREENWICH OBSERVATORY, HERSTMONCEUX CASTLE, HAILSHAM		SUSSEX.		GUIDE UNIT			
Issue	Mod No	Date	Drawn By	Issued	Mod No	Date	Drawn By										

DRAWING NUMBER	No. of Sheets	G.A. Item No.	DRAWING TITLE OR COMPONENT NAME	UoZ	MATERIAL STOCK OR ORDER No. AND DATE	REMARKS	ISSUE DATE	ISSUED TO	FINISH DATE
V/FZ/037		41	LVDT ARMATURE MOUNT	1					
V/FZ/038		42	CLOSING PLATE AG PROBE	1					
V/FZ/039	>1	43	FILTER DRIVE MOTOR MOUNT	1					
V/FZ/040		59	SPECIAL HEX HEAD FOLT	5					
V/FZ/041		60	" " " "	10					
V/FZ/042		61	FOCUS PROX. SW FLAG	1					
V/FZ/043		62	" " " MOUNT	1					
V/FZ/044		63	DISPLACEMENT PROX. SW. MOUNT	1					
V/FZ/045		64	" " " FLAG	1					
V/FZ/046		65	LEAD CONNECTOR MOUNT	1					
V/FZ/047		66	" " " "	1					
048		67	CABLE "C" I	1					
049		68	" " " "	1					
W/FZ/050	1		ELECTRONICS COMPONENTS LAYOUT						
W/FZ/051			OPTICS MOUNT - AG	1		REPLACES W/FZ/001? REPLACES ITEMS 15 TO 17			
W/FZ/052			OPTICS MOUNT CRADLE - AG	1					
V/FZ/053			CRADLE						
		44	STEPPER MOTOR	1	MESAFD-80070	SLO-SYN			
		45	STEPPER MOTOR	2	FEER/MSS	EVERCHIED			
		46	LVDT	1	265	CANSAKHO			
		47	LVDT	1	DC 25	"			
		48	COUPLING	1	3022-4mm-2mm	HELICAL			
		49	COUPLING	1	4082-8.8	"			
		50	BEARING	1	NK18 5901	INA			
		51	BEARING	2	TYPE 607	SKF OR			
		52	LINEAR BEARING	4	TRACKS R3150	(STAINLESS - 2) (11.8mm) (1.25mm)			
		53	BALL ROLLER	2	TYPE J13 x 23	(SIX 1 SHM) -			
		54	LINEAR BEARING	4	TRACKS R3100	(STAINLESS) -			
		55	BALL ROLLER	2	TYPE J18 x 310	(SIX 40mm) -			
		56	END PIECE WITH AL HOLES	2	TYPE 30 SIZE 3	-			
		57	DRIVE PULLEY	1	AL-8-T2.5/12	-2 (SYNCHRON. 2EX)			
		58	DRIVE BELT	1	T2.5/CG5	"			
JOB TITLE						ASSY DRG. No.	SHEET No.	DRAWN BY	
1.2mm AL DIVISION 3 SLIDER UNIT						V/FZ/000	2	E. J. G.	
ROYAL GREENWICH OBSERVATORY,						HERSTMONCEUX CASTLE,	HAILSHAM,	SUSSEX	

DRAWING NUMBER	No. of Sheets	G.A. Item No.	DRAWING TITLE OR COMPONENT NAME	QTY	MATERIAL STOCK OR ORDER No. AND DATE	REMARKS	ISSUE DATE	ISSUED TO	FINISH DATE
W/FZ/001	1	1-5	AUTOGUIDER PROBE DRIFT						
W/FZ/002	1	6	PROBE MOUNT ASSEMBLY	1					
W/FZ/003		7	LENS HOUSING	1					
W/FZ/004		8	LENS HOUSING	1					
W/FZ/005		9	LOCKING RING	1					
W/FZ/006		10	" "	1					
W/FZ/007		11	TRUSS CLAMP PLATE - TOP	1					
W/FZ/008		12	" " " - BOTTOM	1					
V/FZ/009		13	PROBE SIDE PLATE - RH	1					
V/FZ/010		14	" " " - LH	1					
V/FZ/011		15	CCD COORDINATE SIDE PLATE - LH	1					
V/FZ/012		16	" " " " - RH	1					
V/FZ/013		17	" " BASE	1					
V/FZ/014	1	18	SUPPORT FRAME	1					
V/FZ/015		19	MOTOR MOUNT / BEARING HOUSING	1					
V/FZ/016		20	PROBE DISPLACEMENT DRIVE SCREW	1					
V/FZ/017		21	WASHER	1					
V/FZ/018		22	BEARING CAP	1					
V/FZ/019		23	DRIVE SCREW SUPPORT BRACKET	1					
V/FZ/020		24	BUSH	1					
V/FZ/021		25	DISPLACEMENT DRIVE ARM	1					
V/FZ/022		26	ANTI-BACKLASH NUT	1					
V/FZ/023		27	MOTOR MOUNT / BEARING HOUSING	1					
V/FZ/024		28	CCD FOCUSING DRIVE SCREW	1					
V/FZ/025		29	WASHER	1					
V/FZ/026		30	FOCUSING DRIVE BRACKET	1					
V/FZ/027		31	ANTI-BACKLASH NUT	1					
V/FZ/028	1	32	LVDT MOUNT	1					
V/FZ/029	1	33	LVDT CLAMP	1					
V/FZ/030		34	LVDT OPERATING MEM	1					
V/FZ/031		35	BRACKET	2					
V/FZ/032		36	STEAD	1					
V/FZ/033		37	TIE ROD	1					
V/FZ/034		38	DATUM STUD	2					
V/FZ/035		39	MOUNTING BRACKET	1					
V/FZ/036	1	40	LVDT MOUNT	1					
JOB TITLE					ASSY DRG. No.	SHEET No.	DRAWN BY		
1.2m ACQUISITION & GUIDER UNIT - CCD AUTOGUIDER ASSY.					V/FZ/000	1	E/L		
							DATE		
ROYAL GREENWICH OBSERVATORY,					HERSTMONCEUX CASTLE,	HAILSHAM,	SUSSEX		