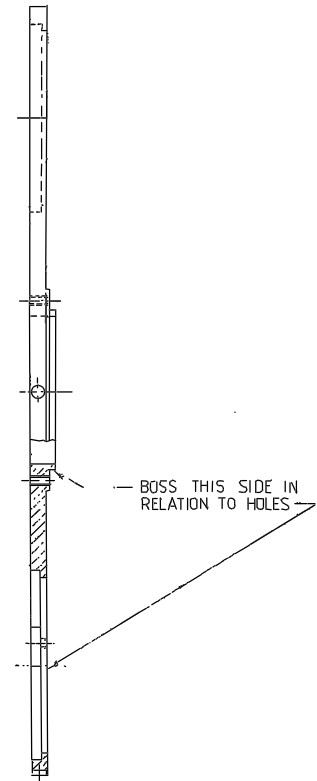
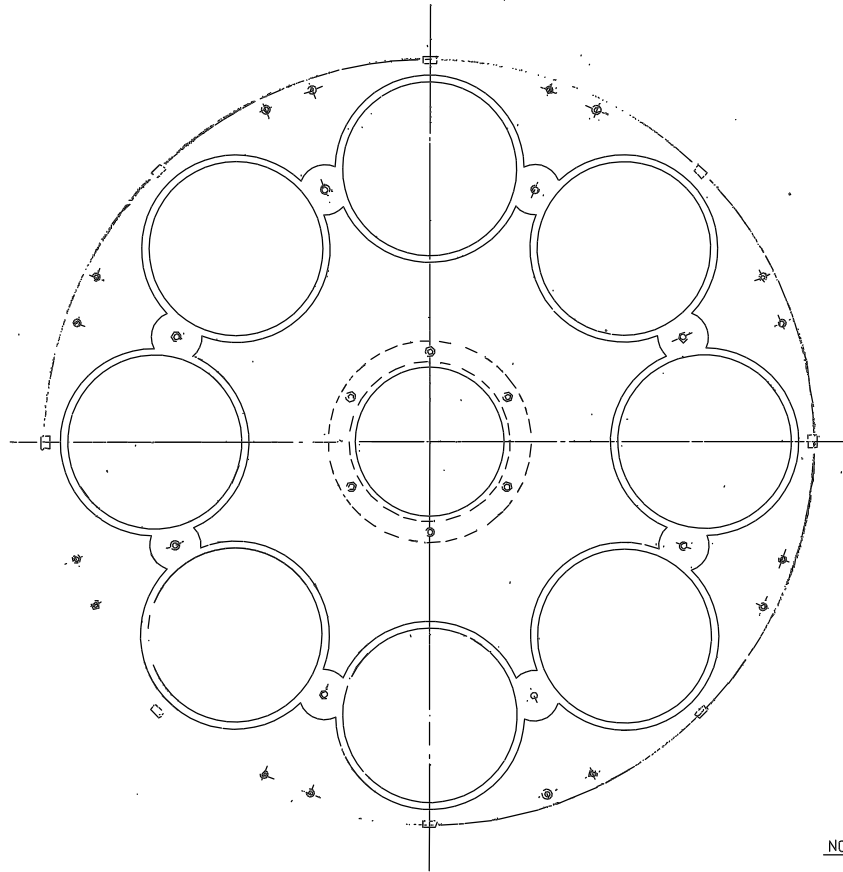


Drawing No.
W/FX/135



NOTE:
ALL DIMENSIONS ARE AS FILTER WHEEL 'A'
W/FX/1106

35 FILTER WHEEL 'B'		
MATERIAL ALCOA	SCALE 1/1	TOLERANCES X
FINISH MATT BLK ANODISE	NO REQ PER UNIT 1	X.X
G.A. No.	DRAWING No. R.G.D. W/FX/135	X.XX

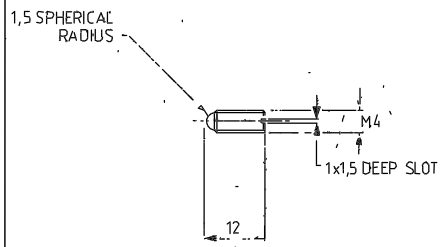
								Tolerances (Unless otherwise stated) X \pm X.X \pm X.XX \pm	Material	Dimns in m.m.		Scale	THIRD ANGLE PROJECTION		G.A. No.
Issue	Mod. No.	Date	Drawn By	Issue	Mod. No.	Date	Drawn By	Finish	Org. No.	No. Req.	Used on	ROYAL GREENWICH OBSERVATORY, HERSTMONCEUX CASTLE, HALSHAM SUSSEX.		Title DETAIL	Drawing No. W/FX/135

DRAWING NUMBER	No. of Sheets	G.A. Item No.	DRAWING TITLE OR COMPONENT NAME	No. of	MATERIAL STOCK OR ORDER No. AND DATE	REMARKS	ISSUE DATE	ISSUED TO	FINISH DATE
/ /		72	LIGHT GUIDE	6	ROFIN R506132	SPECIAL FIBRE OPTICS TUBE			
/ /		73	QUARTZ HALOGEN BULB 6V 10W 6605 M42	1	PHILLIPS				
/ /		74	LAMP-RANK HILGER HOLLOW CATHODE	8		258 QUARTZ TUBES			
/ /		75	SOCKET CHASSIS MOUNTING	6	OCTOPLUS RANGE	XP11/U NYLON PF			
/ /		76	SOCKET	2	"	XP81UTS " PF			
/ /		78	SPRING-EXTENSION O/D 5 x 0.5 x 50 LONG	6	LEE LE-0208-11				
/ /		79	SPRING-COMPRESSION U/D 4.6 x 0.56 x 19	6	LEE LC-0228-9				
/ /		80	BULB HOLDER		PHILLIPS				
/ /		82	SLOT HEAD STUD ASSY 2654Z-12	2	CAMLOC				
/ /		83	SOLID WASHER 2600-LW	2	"				
/ /		84	RECEPTICAL 212-29	2	"				
/ /									
/ /									
/ /									
/ /									
/ /									
/ /									
/ /									
/ /									
/ /									
/ /									
/ /									
/ /									
/ /									
/ /									
/ /									
/ /									
/ /									
/ /									
/ /									
/ /									
/ /									
/ /									
/ /									
/ /									
JOB TITLE	42M A&G CASE 1-COMPARISON SYSTEM ASSEMBLY				ASSY DRG. No.	SHEET No.	DRAWN BY PROMEC LTD		
	ROYAL GREENWICH OBSERVATORY, HERSTMONCEUX CASTLE, HAILSHAM, SUSSEX				V/FX/100	5 OF 4	DATE OCT 86		

DRAWING NUMBER	No. of Sheets	G.A. Item No.	DRAWING TITLE OR COMPONENT NAME	No. of	MATERIAL STOCK OR ORDER No. AND DATE	REMARKS	ISSUE DATE	ISSUED TO	FINISH DATE
W/FX/136	1	36	COVER STRIP	2					
/ / 137		37	CONNECTOR BRACKET	1					
/ / 138		38	SOCKET CLIP RING	2					
/ / 139		39	FILTER RETAINING CLIP	16					
W/FX/140	1	40	HETTICH SWITCH BRACKET 'B'	1					
/ / 141		41	TRIPLE FLAG	2					
/ / 142		42	SINGLE CENTRE FLAG	2					
/ / 143		43	CENTRE & OUTSIDE FLAG	4					
/ / 144		44	SINGLE OUTSIDE FLAG	4					
/ / 145		45	DOUBLE OUTSIDE FLAG	2					
W/FX/146	1	46	SQUARING ON SCREW	12					
/ / 147		47	LAMP RING	2					
/ / 148		48	SOCKET CLIP	2					
/ / 149		49	TIMING PULLEY	2		SEE DRG			
W/FX/		50	LAMP HOLDER PLATE	1					
/ /									
/ /									
/ /									
/ /									
/ /									
/ /									
/ /									
/ /									
/ /		60	LEMO PLUG & SOCKET RASC/F/0	8					
/ /		61	LEMO PLUG & SOCKET RASC/F/1	9					
/ /		62	PROX SWITCH - HETTICH 001	6					
/ /		63	PROX SWITCH - HONEYWELL 922FS0,8-A4N	2					
/ /		64							
/ /		65	STEPPING MOTOR M061	2		CHECK NO. 10			
/ /		66							
/ /		67	PULLEY BELT-SYNCHROFLEX- T2.5/600	2					
/ /		68							
/ /		69	BEARING-KAYDON KA020XPD	2					
/ /		70							
/ /		71							

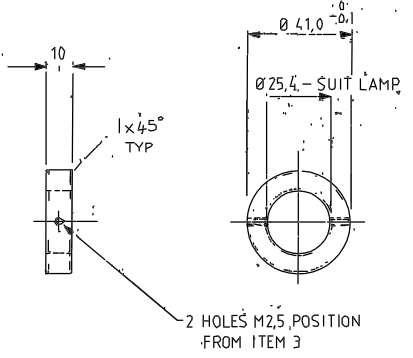
JOB TITLE	42 M A & G CASE 1-COMPARISON SYSTEM ASSEMBLY	ASSY DRG. No.	W/FX/100	SHEET No.	2 OF 4	DRAWN BY PROMEC LTD
	ROYAL GREENWICH OBSERVATORY, HERSTMONCEUX CASTLE, HAILSHAM, SUSSEX					DATE OCT 86

DRAWING NUMBER	No. of Sheets	G.A. Item No.	DRAWING TITLE OR COMPONENT NAME	No. of	MATERIAL STOCK OR ORDER No. AND DATE	REMARKS	ISSUE DATE	ISSUED TO	FINISH DATE
V/FX/100	1		COMPARISON SYSTEM ASSEMBLY						
W/FX/101	1	1	FIELD LENS CELL	1	ALUM ^m CASTING				
W/FX/102	1	2	DISTANCE MOUNTING	1	AL.S. FAB ^m				
V/FX/103	1	3	INTEGRATING SPHERE	1	BKASS FAB ^m				
W/FX/104	1	4	FILTER BOX BASE PLATE	1	T. LUMINO PLT	ALUM ^m			
W/FX/105	1	5	FILTER BOX TOP PLATE	1	"	"			
W/FX/106	1	6	FILTER WHEEL 'A'	1	"	SPE ^m			
W/FX/107	1	7	DRIVE PULLEY 'A'	1					
/108		8	DRIVE PULLEY 'B'	1					
/109		9	DRIVEN PULLEY	2		SEE DRG			
/110		10	MOTOR PLATE	2					
W/FX/111	1	11	LAMP BOX	2	ALUM ^m CASTING				
W/FX/112	1	12	LAMP BOX LID	2					
W/FX/113	1	13	SQUARING ON SHOE	6					
/114		14	LAMP FOCUS LENS CELL	6					
/115		15	SQUARING ON SHOE PLATE	2					
/116		16	LAMP SOCKET PLATE	2					
W/FX/117	1	17	FILTER BOX COVER	1					
W/FX/118	1	18	SIDE PLATE FILTER BOX	2					
/119		19	CLOSING PLATE FILTER BOX	1					
/120		20	SUPPORT PILLAR FILTER BOX	4					
/121		21	DISTANCE PIECE FILTER BOX	2					
W/FX/122	1	22	SPINDLE	1					
/123		23	OBSCURATION INSERT	1					
/124		24	KEEP RING 'A'	2					
/125		25	KEEP RING 'B'	2					
/126	1	26	FIELD LENS	2	SPECTRO SIL B				
/127		27	LAMP FOCUS LENS	6	ALUM ^m FAB ^m	34-215611-1-5611-1			
/128		28	FILTER	16					
V/FX/129	1	29	LAMP SUPPORT	2					
/130		30	HETTICH SWITCH BRACKET	1					
/131		31	HONEYWELL SWITCH BRACKET	1					
W/FX/132	1	32	BEZEL RING	1					
/133		33	SPACER RING	1					
/134		34	LAMP LENS RETAINING RING	6					
W/FX/135	1	35	FILTER WHEEL 'B'	1		SIL B			
JOB TITLE 42N A & G CASE 1 - COMPARISON SYSTEM ASSEMBLY						ASSY DRG. No. V/FX/100	SHEET No. 1 OF 4	DRAWN BY PROMEC LTD	
ROYAL GREENWICH OBSERVATORY, HERSTMONCEUX CASTLE,						HAILSHAM,	DATE OCT 86 SUSSEX		



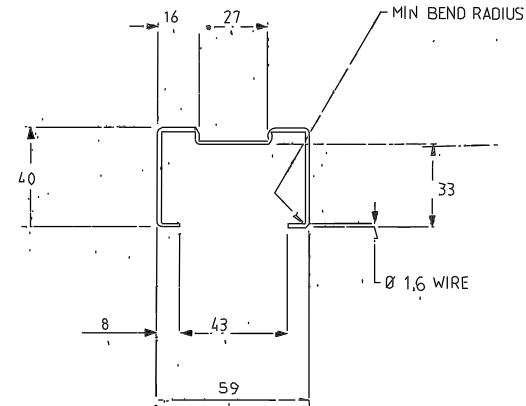
OR
MOD STD
SCREW

TITLE			
46 SQUARING ON SCREW			
MATERIAL	SCALE	TOLERANCES	
ST. STL.	2:1	X ± 0.5	
FINISH	NO REQ PER UNIT	XX ± 0.2	
NATURAL	12	XXX ± 0.1	
G.A. No.	DRAWING No.		
	R.G.O. W/FX/146		



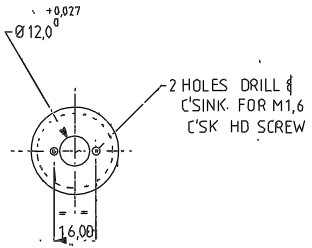
MATL
OR USE
TUFNOL

TITLE			
47 LAMP RING			
MATERIAL	SCALE	TOLERANCES	
POLYPROPYLENE	1:1	X ± 0.5	
FINISH	NO REQ PER UNIT	XX ± 0.2	
	2	XXX ± 0.1	
G.A. No.	DRAWING No.		
	R.G.O. W/FX/147		



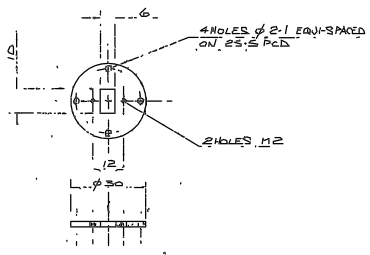
NOTE - CHECK SIZE WITH
SAMPLE SOCKET

TITLE			
48 SOCKET CLIP			
MATERIAL	SCALE	TOLERANCES	
ST. STL.	1:1	X ± 0.5	
FINISH	NO REQ PER UNIT	XX ± 0.2	
NATURAL	2	XXX ± 0.1	
G.A. No.	DRAWING No.		
	R.G.O. W/FX/148		



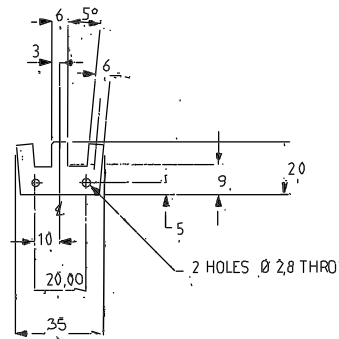
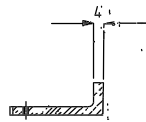
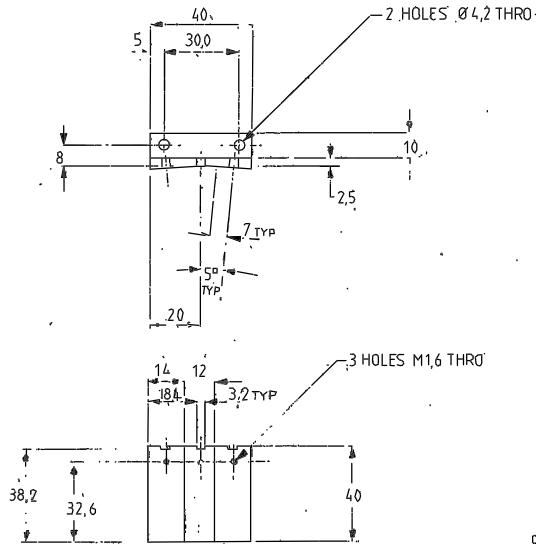
MODIFY - TIMING PULLEY SYNCHROFLEX - 10-T2,5/40-2

TITLE			
49 TIMING PULLEY			
MATERIAL	SCALE	TOLERANCES	
SEE DRG	1:1	X ± 0.5	
FINISH	NO REQ PER UNIT	XX ± 0.2	
	2	XXX ± 0.1	
G.A. No.	DRAWING No.		
	R.G.O. W/FX/149		



TITLE			
50 LAMP HOLDER PLATE			
MATERIAL	SCALE	TOLERANCES	
BRASS	1:1	X ± 0.5	
FINISH	NO REQ PER UNIT	XX ± 0.2	
	1	XXX ± 0.1	
G.A. No.	DRAWING No.		
	R.G.O. W/FX/215		

Drawing No. **W/Fx/140** TO
W/Fx/145



16 THICK MATERIAL

ALL DIMENSIONS AS W/HO/141

REMOVE ALL SHARP EDGES

40 HETTICH SWITCH BRKT. '8'		
MATERIAL	SCALE	TOLERANCES
ALUM ALLOY	1/1	X ± 0.5
FINISH	NO REQS PER UNIT	XXX ± 0.2
HAIT BLK ANODISE	1	XXX
G.A. No.	DRAWING No.	
	R.G.O. W/Fx/140	

DR MAKE FROM STANDARD ANGLE

41 TRIPLE FLAGS		
MATERIAL	SCALE	TOLERANCES
MILD STEEL	1/1	X ± 0.5
FINISH	NO REQS PER UNIT	XXX ± 0.2
BLK NICKEL PLATE	2	XXX ± 0.1
G.A. No.	DRAWING No.	
	R.G.O. W/Fx/141	

42 SINGLE CENTRE FLAG		
MATERIAL	SCALE	TOLERANCES
MILD STEEL	1/1	X ± 0.5
FINISH	NO REQS PER UNIT	XXX ± 0.2
BLK NICKEL PLT	2	XXX
G.A. No.	DRAWING No.	
	R.G.O. W/Fx/142	



ALL DIMENSION AS W/Fx/141

43 CENTRE & OUTSIDE FLAGS		
MATERIAL	SCALE	TOLERANCES
MILD STEEL	1/1	X ± 0.5
FINISH	NO REQS PER UNIT	XXX ± 0.2
BLK NICKEL PLT	4	XXX
G.A. No.	DRAWING No.	
	R.G.O. W/Fx/143	



ALL DIMENSIONS AS W/Fx/141

44 SINGLE OUTSIDE FLAG		
MATERIAL	SCALE	TOLERANCES
MILD STEEL	1/1	X ± 0.5
FINISH	NO REQS PER UNIT	XXX ± 0.2
BLK NICKEL PLT	4	XXX
G.A. No.	DRAWING No.	
	R.G.O. W/Fx/144	



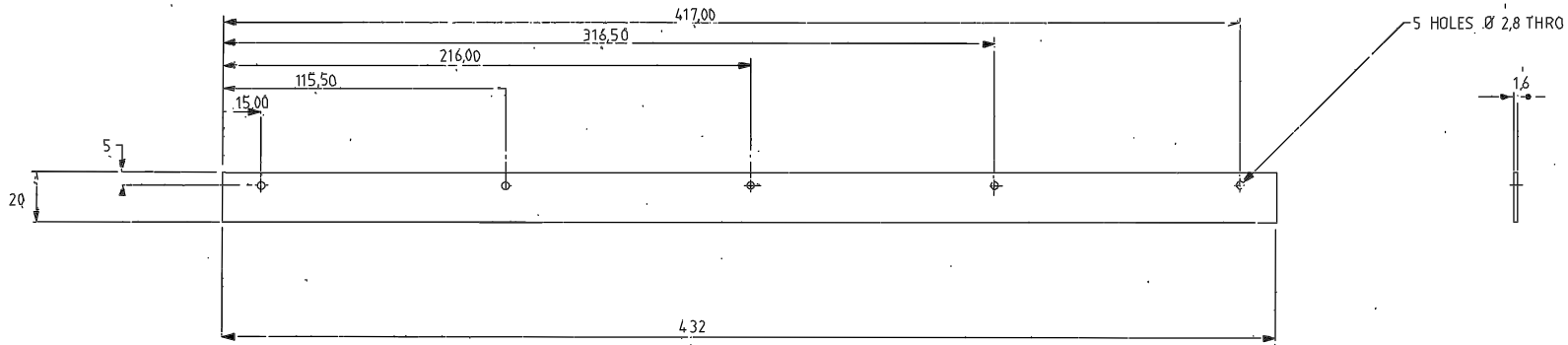
ALL DIMENSIONS AS W/Fx/141

45 DOUBLE OUTSIDE FLAGS		
MATERIAL	SCALE	TOLERANCES
MILD STEEL	1/1	X ± 0.5
FINISH	NO REQS PER UNIT	XXX ± 0.2
BLK NICKEL PLT	2	XXX
G.A. No.	DRAWING No.	
	R.G.O. W/Fx/145	

ALL FLAGS SHOULD BE 10 WIDE NOT 6

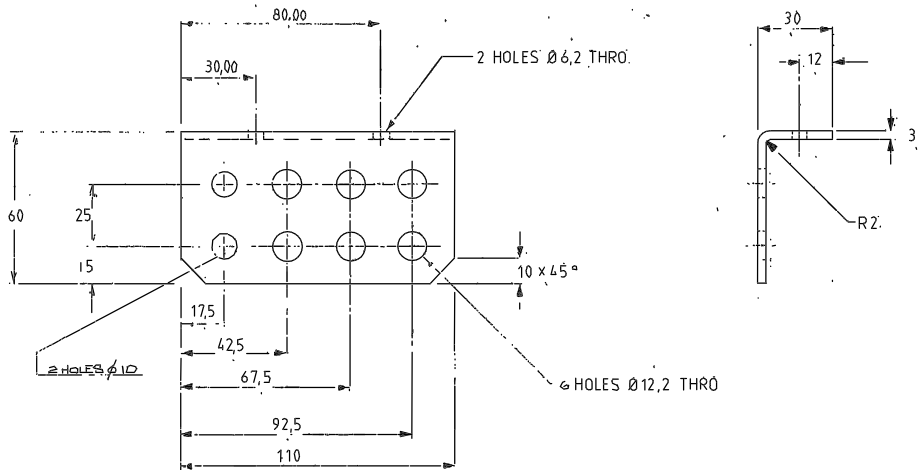
Material				Dimens in m.m.				Scale				THIRD ANGLE PROJECTION				G.A. No.	
Tolerances (unless otherwise stated)				ROYAL GREENWICH OBSERVATORY, HERSTMONCEUX, CASTLE, HAILSHAM				Title				DETAILS				Drawing No.	
X ±				No. Drawn				No. Res.				SUSSEX.				W/Fx/140 TO	
XY ±				Used on												W/Fx/145	
XXX ±																	

Drawing No. W/FX/136/139 TO



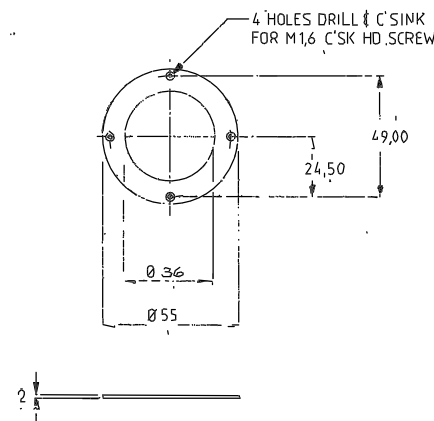
REMOVE SHARP EDGES

36 COVER STRIP			
MATERIAL	SCALE	TOLERANCES	
ALUM ALLOY	1:1	X	± 0.5
FINISH	NO REQ. PER UNIT	XX	± 0.2
MATT BLK ANODISE	2	XXX	
G.A. No.	DRAWING No.	R.G.O. W/FX/136	



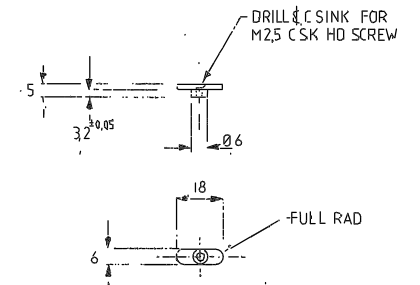
REMOVE SHARP EDGES.

37 CONNECTOR BRACKET			
MATERIAL	SCALE	TOLERANCES	
ALUM ALLOY	1:1	X	± 0.5
FINISH	NO REQ. PER UNIT	XX	± 0.2
MATT BLK ANODISE	1	XXX	
G.A. No.	DRAWING No.	R.G.O. W/FX/137	



REMOVE SHARP EDGES

38 SOCKET CLIP RING			
MATERIAL	SCALE	TOLERANCES	
BRASS	1:1	X	± 0.5
FINISH	NO REQ. PER UNIT	XX	± 0.2
BLK NICKEL PLATE	2	XXX	± 0.1
G.A. No.	DRAWING No.	R.G.O. W/FX/138	



REMOVE SHARP EDGES

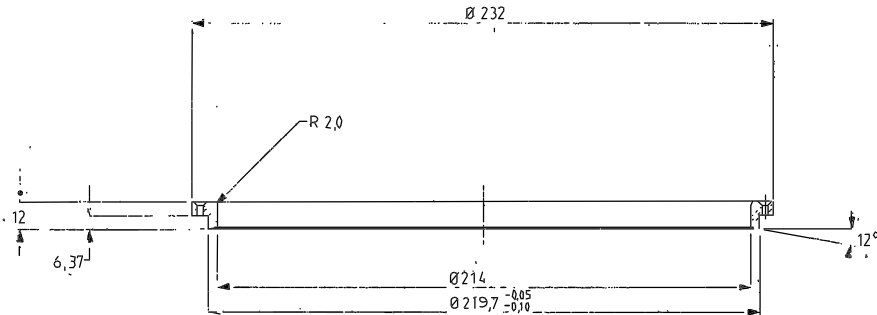
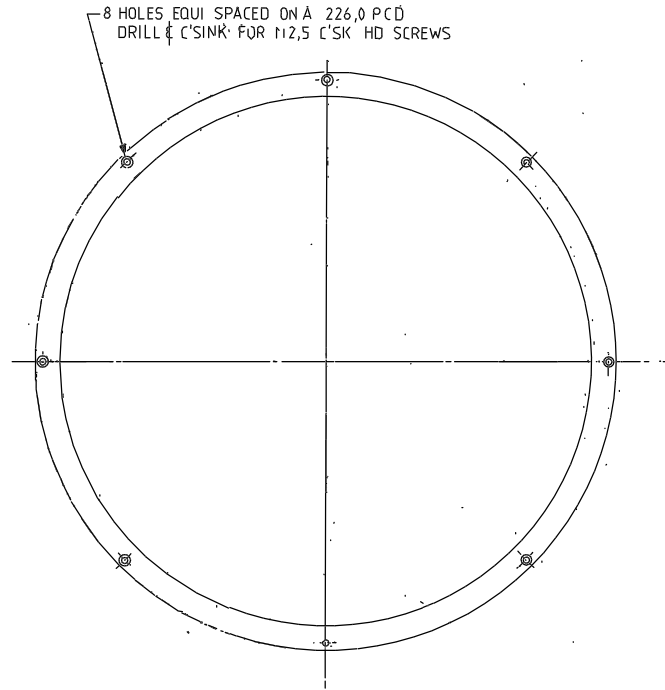
39 FILTER RETAINING CLIP			
MATERIAL	SCALE	TOLERANCES	
BRASS	1:1	X	± 0.2
FINISH	NO REQ. PER UNIT	XX	± 0.1
BLK NICKEL PLATE	16	XXX	
G.A. No.	DRAWING No.	R.G.O. W/FX/139	

Issue		Mod. No.		Date		Drawn By		Issue		Mod. No.		Date		Drawn By		Material		Dim in mm.		Scale		THIRD ANGLE PROJECTION		Drawing No.	
																								W/FX/136/139 TO	

DETAILS

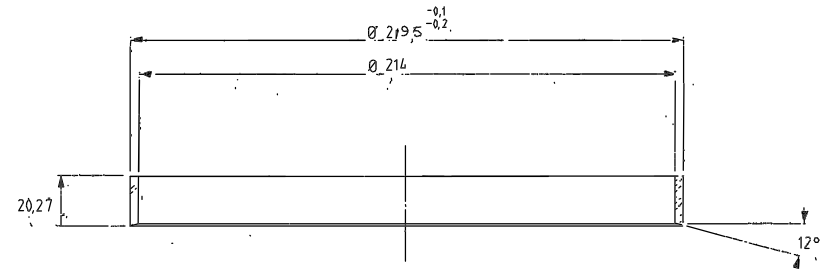
DRAWING NUMBER	No. of Sheets	G.A. Item No.	DRAWING TITLE OR COMPONENT NAME	No. of	MATERIAL STOCK OR ORDER No. AND DATE	REMARKS	ISSUE DATE	ISSUED TO	FINISH DATE
/ /		110	SOCKET HD CAP SCREW/ M6-25LONG	12	STAINLESS STEEL				
/ /		112	" " " " M6-12 "	2	" "				
/ /		113	" " " " M5-20 "	8	" "				
/ /		114	" " " " M5-12 "	8	" "				
/ /		115	" " " " M4-8 "	32	" "				
/ /		116	" " " " M3-10 "	10	" "				
/ /		117	PAN HEAD SCREW/ M6-20 LONG	8	" "				
/ /		118	" " " " M6-12 "	2	" "				
/ /		119	" " " " M4-8 "	6	" "				
/ /									
/ /									
/ /									
/ /		125	" " " " M2,5-6 "	66	" "				
/ /		126	" " " " M2-5 "	4	" "				
/ /		127	CRK HEAD SCREW M4-10 LONG	8	" "				
/ /		128	" " " " M1,6-16 "	4	" "				
/ /		129	" " " " M3-18 "	12	" "				
/ /		130	" " " " M3-6 "	12	" "				
/ /		131	" " " " M2,5-10 "	8	" "				
/ /		132	" " " " M2,5-8 "	32	" "				
/ /		133	" " " " M2,5-6 "	24	" "				
/ /		134	" " " " M1,6-8 "	6	" "				
/ /		135	" " " " M1,6-4 "	9	" "				
/ /		136	GRUB SCREW M6-5 LONG	6	" "				
/ /		137	" " " " M3-6 "	4	" "				
/ /		138	" " " " M2,5-5 "	6	" "				
/ /		139	" " " " M2-5 "	8	" "				
/ /		140	HEX NUT M4	12	" "				
/ /		141	PLAIN WASHER Ø 5	2	" "				
/ /									
/ /									
/ /									
/ /									
/ /									
JOB TITLE 42M A & G CASE 1: COMPARISON SYSTEM ASSEMBLY						ASSY DRG. No. V/FX/100	SHEET No. 4 OF 4	DRAWN BY: PROMEC LTD DATE OCT 86	
ROYAL GREENWICH OBSERVATORY,						HERSTMONCEUX CASTLE,	HAILSHAM,	SUSSEX	

Drawing No. W/FX/132 TO 134



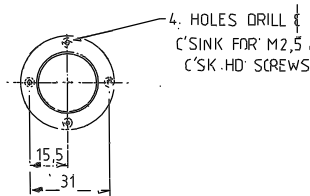
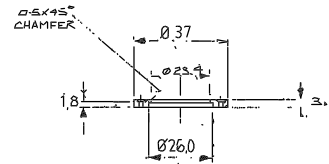
32 BEZEL RING		
MATERIAL	SCALE	TOLERANCES
ALUM. ALLOY	1/1	x. ± 0,5
FINISH	NO REQ. PER UNIT	xx. ± 0,2
MATT BLK ANODISE	1	xxx. ± 0,1
G.A. No.	DRAWING No.	
R.G.O.	W/FX/132	

REMOVE SHARP EDGES



REMOVE SHARP EDGES

33 SPACER RING		
MATERIAL	SCALE	TOLERANCES
ALUM. ALLOY	1/1	x. ± 0,5
FINISH	NO REQ. PER UNIT	xx. ± 0,2
MATT BLK ANODISE	1	xxx. ± 0,1
G.A. No.	DRAWING No.	
R.G.O.	W/FX/133	

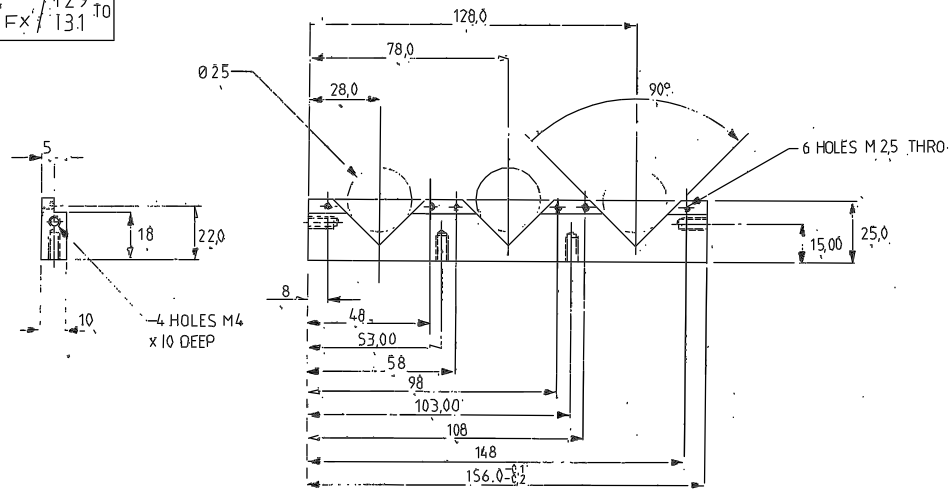


REMOVE SHARP EDGES

34 LAMP LENS RETAINING RING		
MATERIAL	SCALE	TOLERANCES
BRASS	1/1	x. ± 0,2
FINISH	NO REQ. PER UNIT	xx. ± 0,1
BLK NICKEL PLATE	6	xxx. ± 0,1
G.A. No.	DRAWING No.	
R.G.O.	W/FX/134	

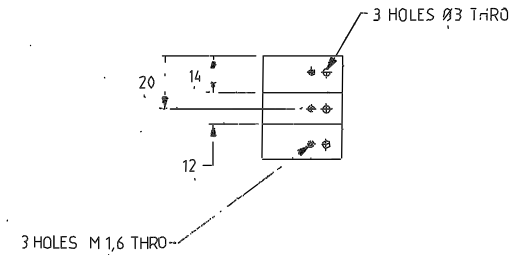
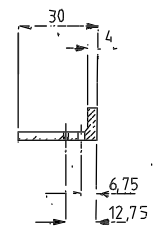
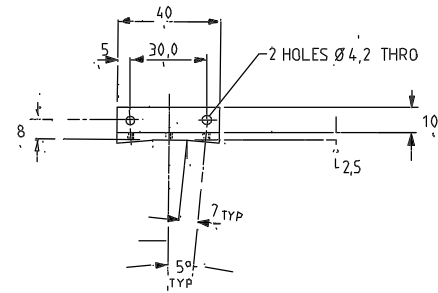
Tolerances (Unless otherwise stated)		Material	Drawn in m.m.	Scale	THIRD ANGLE PROJECTION	G.A. No.								
x. ±	Final													
xx. ±														
xxx. ±														
xxxx. ±														
ISSUE	Mod. No.	Date	Drawn By	Issue	Mod. No.	Date	Drawn By	Drawn in	No. Rev.	ROYAL GREENWICH OBSERVATORY, HERSTMONCEUX CASTLE, HAILSHAM SUSSEX.	Title	DETAILS	Drawing No.	W/FX/132 TO 134

Drawing No. 129
W/FX/131 TO



MATERIAL - POLYPROPYLENE OR TUFNOL

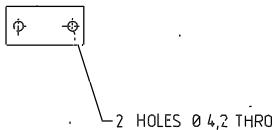
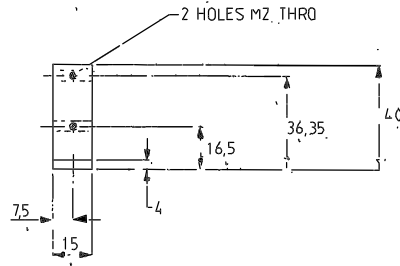
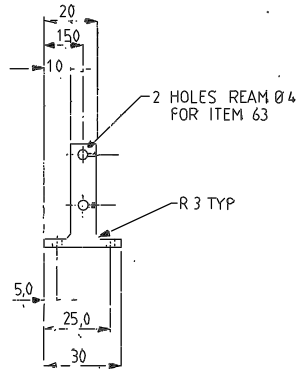
TITLE			
29) LAMP SUPPORT			
MATERIAL	SCALE	TOLERANCES	
	1/1	X	± 0.5
FINISH	No REQ. PER UNIT	XX	± 0.2
	2	XXX	± 0.1
G.A. No.	DRAWING No.		
	R.G.O. W/FX/129		



OR MAKE FROM STANDARD ANGLE

REMOVE SHARP EDGES

TITLE			
30) HETTICH SWITCH BRKT 'A'			
MATERIAL	SCALE	TOLERANCES	
ALUM. ALLOY	1/1	X	± 0.5
FINISH	No REQ. PER UNIT	XX	± 0.2
MATT BLK ANODISE	1	XXX	
G.A. No.	DRAWING No.		
	R.G.O. W/FX/130		



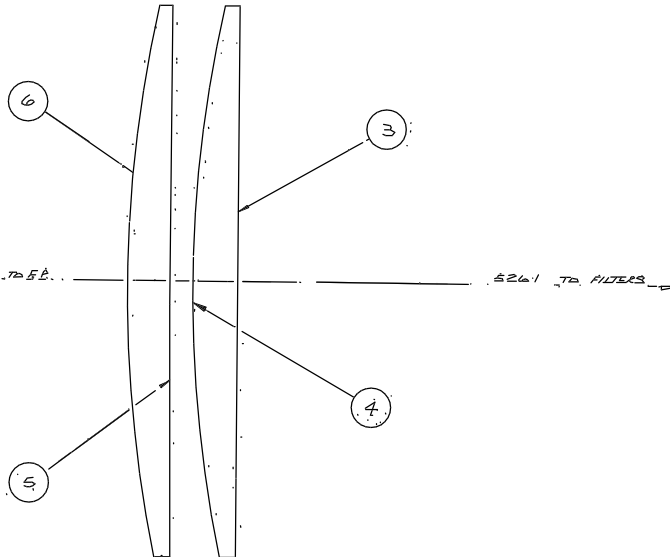
REMOVE SHARP EDGES

TITLE			
31) HONEYWELL SWITCH BRKT			
MATERIAL	SCALE	TOLERANCES	
ALUM. ALLOY	1/1	X	± 0.5
FINISH	No REQ. PER UNIT	XX	± 0.2
MATT BLK ANODISE	1	XXX	
G.A. No.	DRAWING No.		
	R.G.O. W/FX/131		

Tolerances (unless otherwise stated)						Material		Dinng in mm.		Scale		THIRD ANGLE PROJECTION		G.A. No.	
Issue	Mod. No.	Date	Drawn By	Issue	Mod. No.	Date	Drawn By	Material	Finish	Drng. No.	No. Req.	ROYAL GREENWICH OBSERVATORY, HERSTMONCEUX CASTLE, HAILSHAM SUSSEX.	Title	Drawing No.	TO
													DETAIL	129 W/FX/131	TO

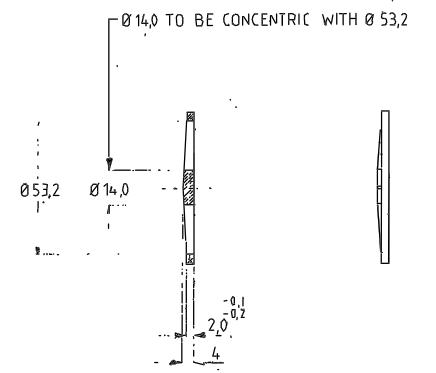
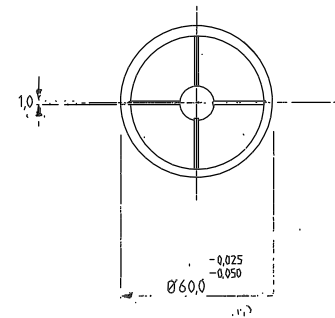
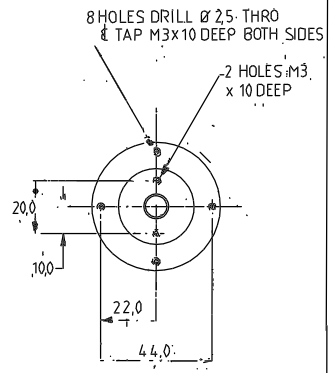
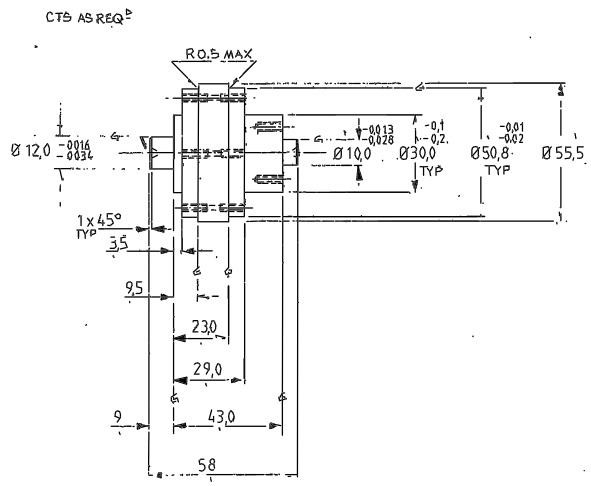
Drawing No.
W/FX/126

SURFACE NO.	RADIUS OF CURVATURE	AXIAL SEPARATION	REFRACTIVE INDEX	LEADER DIAM.	FULL DIAM.	REMARKS
1	0	526.1	AIR			INFLUENCING SP. RESOLUTION
2	0	6	GLASS			FILTER THICKNESS
3	0	17	SPECTROSIL B		219.3 ACTUAL	
4	537.6	8.9	AIR			
5	0	17	SPECTROSIL B		219.3 ACTUAL	
6	537.6	9.5	AIR			TO FOCUS PLANE



				Tolerances (Unless otherwise stated)				Material		Dimns in mm.		Scale FULL SIZE		THIRD ANGLE PROJECTION		S.A. No.	
				X ±				Finish		1/1912				ROYAL GREENWICH OBSERVATORY, HERSTMONCEUX CASTLE, HAILSHAM		Drawing No.	
				XX ±						Dwg. No.		No. Req.		COMPARISON FIELD LENSES		W/FX/126	
				XXX ±						Used on				SUSSEX.			
Issue	Mod. No.	Date	Drawn By	Issue	Mod. No.	Date	Drawn By										

Drawing No. 122
WJFX / 125.T0

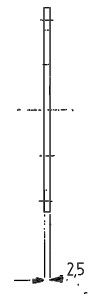
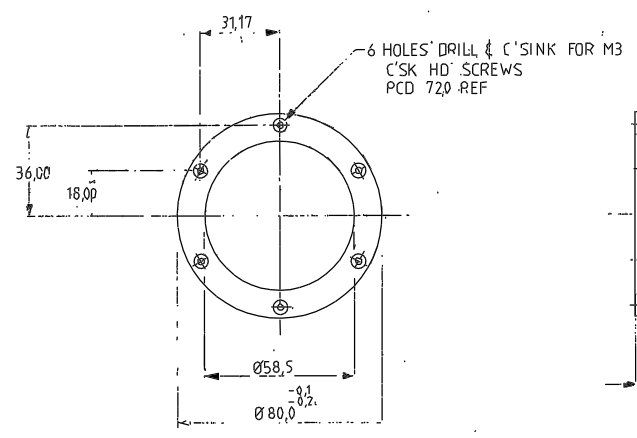


REMOVE SHARP EDGES

NOTE - SOFT SOLDER TOGETHER
REMOVE SHARP EDGES

22 SPINDLE		
MATERIAL	SCALE	TOLERANCES
ST. STL.	1/1	x ± 0.2
FINISH	NO REQ. PER UNIT	xx ± 0.1
BLK NICKEL PLATE	1	xxx
G.A. No.	DRAWING No.	
	R.G.O. WJFX	122.

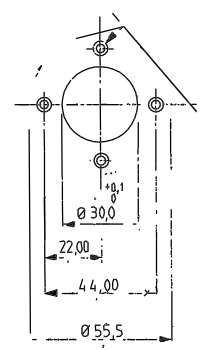
23 OBSCURATION INSERT		
MATERIAL	SCALE	TOLERANCES
BRASS	1/1	x ± 0.2
FINISH	NO REQ. PER UNIT	xx ± 0.1
BLK NICKEL PLATE	1	xxx
G.A. No.	DRAWING No.	
	R.G.O. WJFX	123



REMOVE SHARP EDGES

24 KEEP RING 'A'		
MATERIAL	SCALE	TOLERANCES
ALUM ALLOY	1/1	x ± 0.2
FINISH	NO REQ. PER UNIT	xx ± 0.1
MATT BLK ANODISE	2	xxx
G.A. No.	DRAWING No.	
	R.G.O. WJFX	124.

4 HOLES DRILL & C'SINK FOR M3
C'SK HD SCREWS

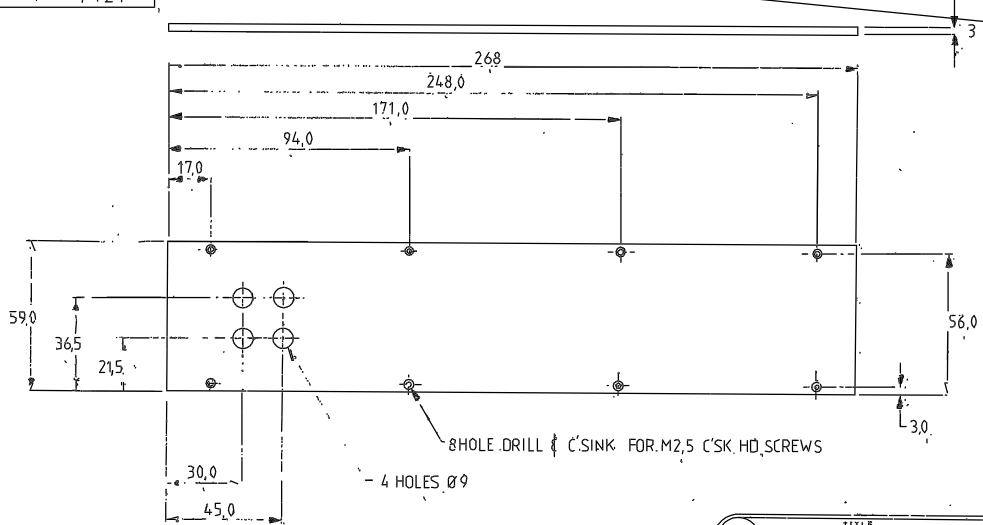


REMOVE SHARP EDGES

25 KEEP RING 'B'		
MATERIAL	SCALE	TOLERANCES
ALUM ALLOY	1/1	x ± 0.2
FINISH	NO REQ. PER UNIT	xx ± 0.1
MATT BLK ANODISE	2	xxx
G.A. No.	DRAWING No.	
	R.G.O. WJFX	125

Tolerances (Unless otherwise stated)						Material		Dimms in mm.		Scale		THIRD ANGLE PROJECTION		G.A. No.	
x ±						Finish		ROYAL GREENWICH OBSERVATORY,		Title		DETAIL		Drawing No.	
xx ±						Drg. No.		HERSTMENCEUX CASTLE,				WJFX / 122		125	
xxx ±						Used on		HAILSHAM							
Issue	Mod. No.	Date	Drawn By	Issue	Mod. No.	Date	Drawn By								

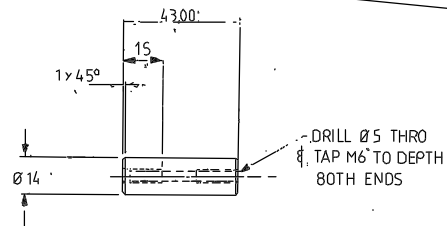
Drawing No. **W/FX/118**
121^{TO}



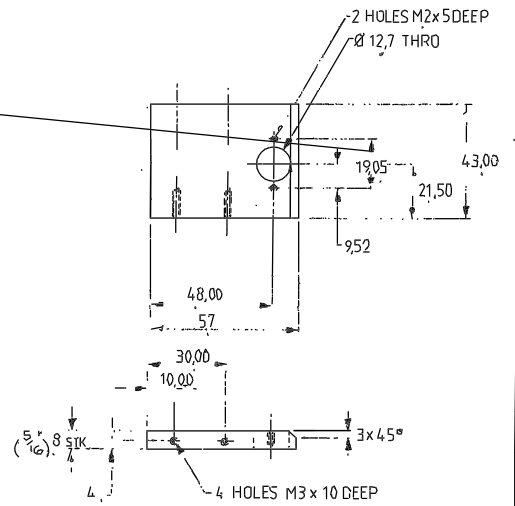
*PAINTE EXTERNAL SURFACE
 ALCOSS 62 18000 DB B/S*
 REMOVE SHARP EDGES

18 SIDE PLATE - FILTER BOX			
MATERIAL	SCALE	TOLERANCES	
ALUM ALLOY	1/1	x ± 0,5	
FINISH	NO REQ. PER UNIT	xx ± 0,2	
MATT BLK ANODISE	2	xxx ± 0,1	
D.A. No.	DRAWING No.		
	R.G.O. W/FX/118		

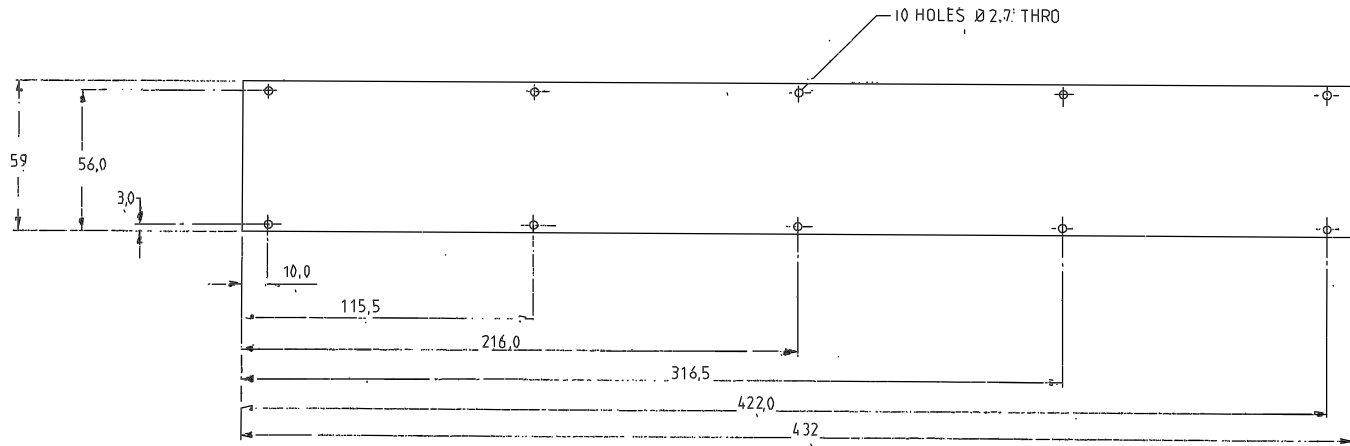
OR USE HEX BAR



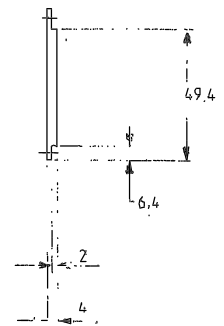
20 SUPPORT PILLAR FILTER BOX			
MATERIAL	SCALE	TOLERANCES	
ALUM ALLOY	1/1	x ± 0,5	
FINISH	NO REQ. PER UNIT	xx ± 0,2	
MATT BLK ANODISE	4	xxx ± 0,1	
D.A. No.	DRAWING No.		
	R.G.O. W/FX/120		



21 DISTANCE PIECE FILTER BOX			
MATERIAL	SCALE	TOLERANCES	
ALCOA PLT	1/1	x ± 0,5	
FINISH	NO REQ. PER UNIT	xx ± 0,2	
MATT BLK ANODISE	2	xxx ± 0,1	
D.A. No.	DRAWING No.		
	R.G.O. W/FX/121		



*PAINTE EXTERNAL SURFACE
 ALCOSS 62 18000 DB B/S*
 REMOVE SHARP EDGES



19 CLOSING PLATE FILTER BOX			
MATERIAL	SCALE	TOLERANCES	
ALUM ALLOY	1/1	x ± 0,5	
FINISH	NO REQ. PER UNIT	xx ± 0,2	
MATT BLK ANODISE	1	xxx ± 0,1	
D.A. No.	DRAWING No.		
	R.G.O. W/FX/119		

Issue	Mod. No.	Date	Drawn By	Issue	Mod. No.	Date	Drawn By

Tolerances (Unless otherwise stated)
 x ±
 xx ±
 xxx ±

Material	Finish	Divs in n.m.	Scale

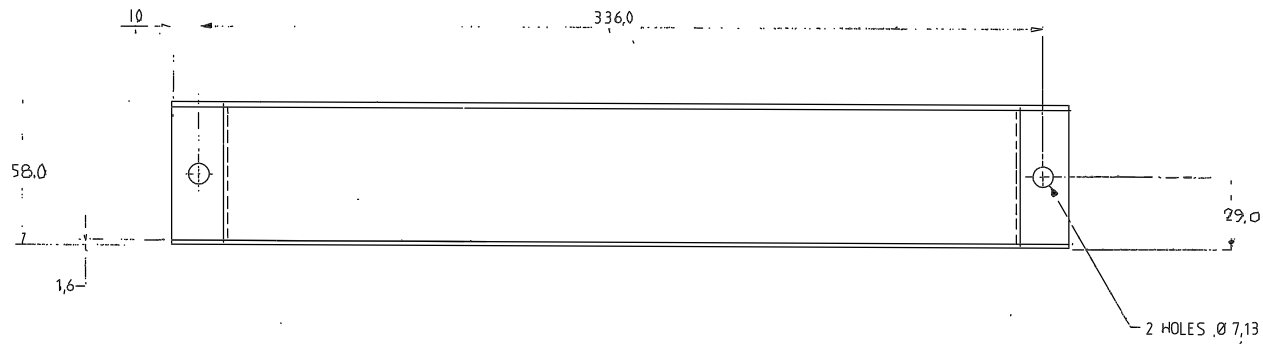
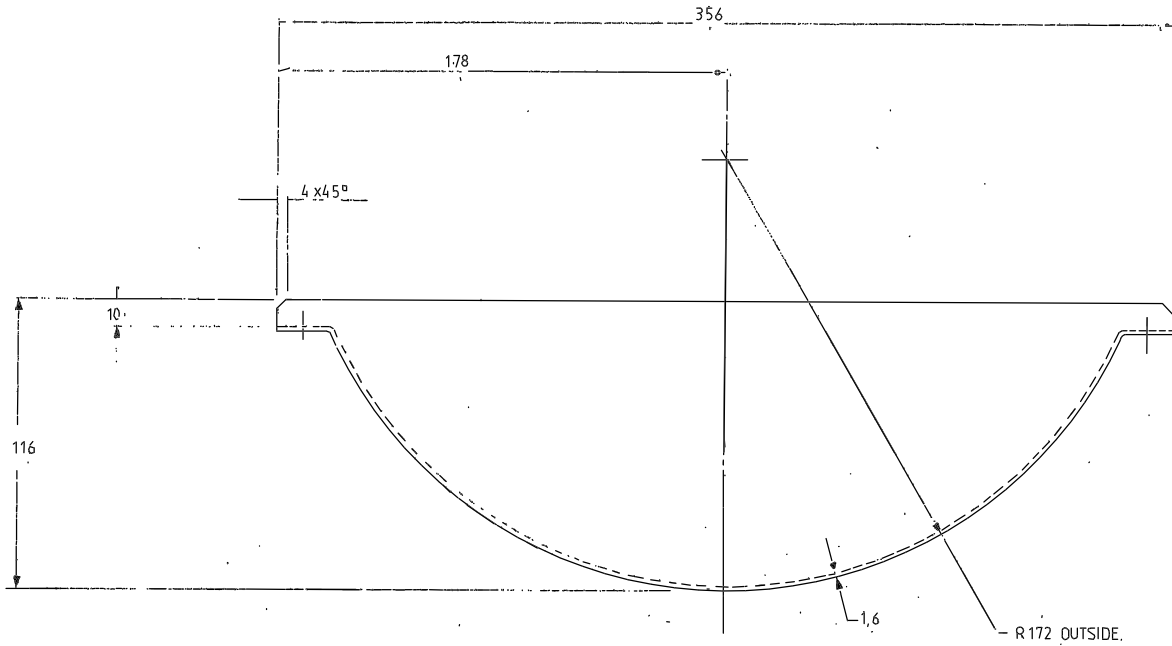
ROYAL GREENWICH OBSERVATORY,
 PERSTINGNEUX CASTLE,
 HAILESHAM SUSSEX.

Drawn No.	No. Req.	Used on

THIRD ANGLE PROJECTION
 DETAIL

Drawing No. **W/FX/118**
121^{TO}

Drawing No.
W/FX/117

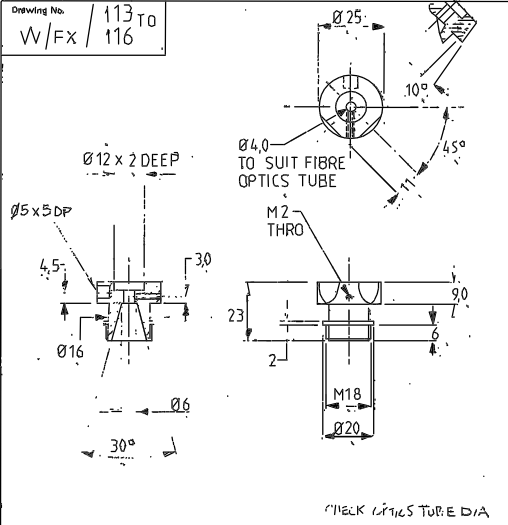


NOTE:
WELDED ASSEMBLY
REMOVE SHARP EDGES

17 FILTER BOX COVER		
MATERIAL	SCALE	TOLERANCES
ALUM ALLOY	1/1	x ± 0,5
FINISH	No REQ. PER UNIT	xx ± 0,2
MAT BLK ANODISE	1	xxx
S.A. No.	DRAWING No.	
R.G.O. W/FX/117		

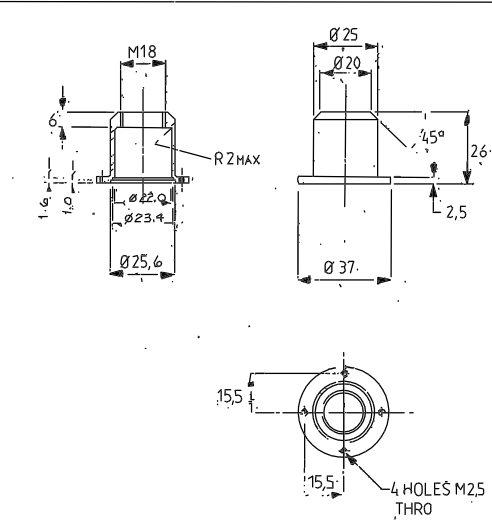
							Tolerances (Unless otherwise stated)	Material	Dimms in mm.		Scale	THIRD ANGLE PROJECTION		G.A. No.	
							X ±								
							XX ±	Finish	Dwg. No.	No. Req.		ROYAL GREENWICH OBSERVATORY, HERSTMONCEUX CASTLE HAILSHAM. SUSSEX.		Title	
Issue	Mod. No.	Date	Drawn By	Issue	Mod. No.	Date	Drawn By		Used on			DETAIL		Drawing No.	
														W/FX/117	

Drawing No. 113 TO
W/FX / 116



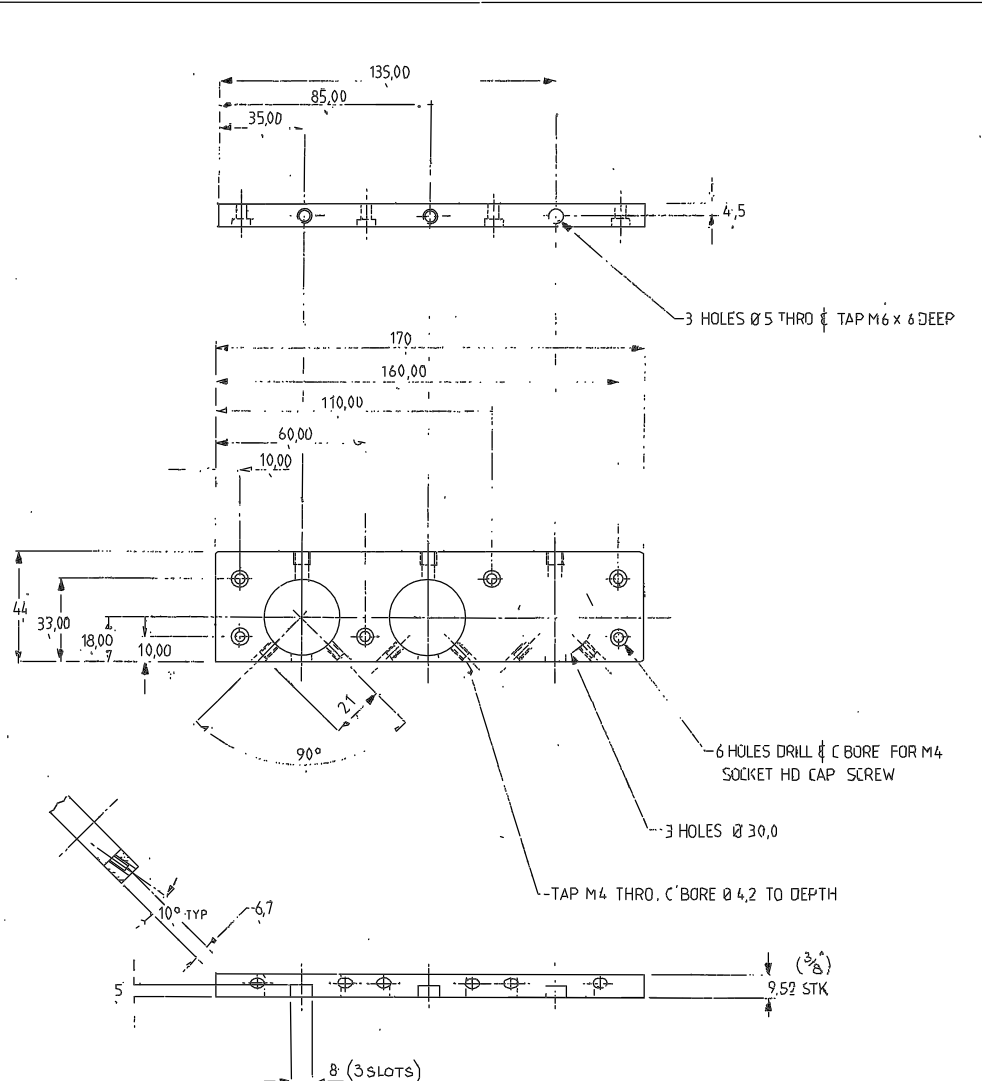
REMOVE SHARP EDGES

TITLE: 13 SQUARING ON SHOE		
MATERIAL	SCALE	TOLERANCES
BRASS	1/1	X ± 0.2
FINISH	NO REQS PER UNIT	XX ± 0.1
BLK NICKEL PLATE	6	XXX ± 0.1
G.A. No.	DRAWING No.	
	R.G.O. W/FX / 113	



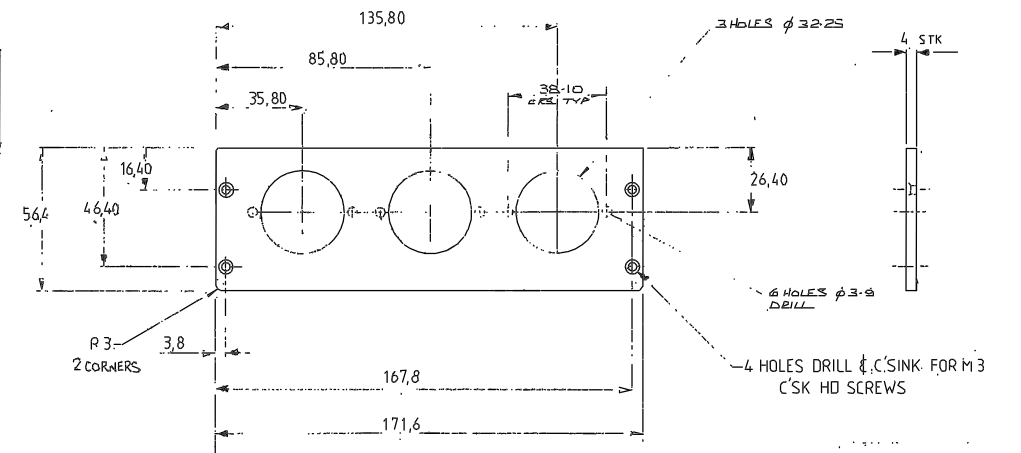
REMOVE SHARP EDGES

TITLE: 14 LAMP FOCUS LENS CELL		
MATERIAL	SCALE	TOLERANCES
BRASS	1/1	X ± 0.2
FINISH	NO REQS PER UNIT	XX ± 0.1
BLK NICKEL PLATE	6	XXX ± 0.1
G.A. No.	DRAWING No.	
	R.G.O. W/FX / 114	



REMOVE SHARP EDGES

TITLE: 15 SQUARING ON SHOE PLATE		
MATERIAL	SCALE	TOLERANCES
ALCOA PL ²	1/1	X ± 0.5
FINISH	NO REQS PER UNIT	XX ± 0.2
MATT BLK ANODISE	1	XXX ± 0.1
G.A. No.	DRAWING No.	
	R.G.O. W/FX / 115	

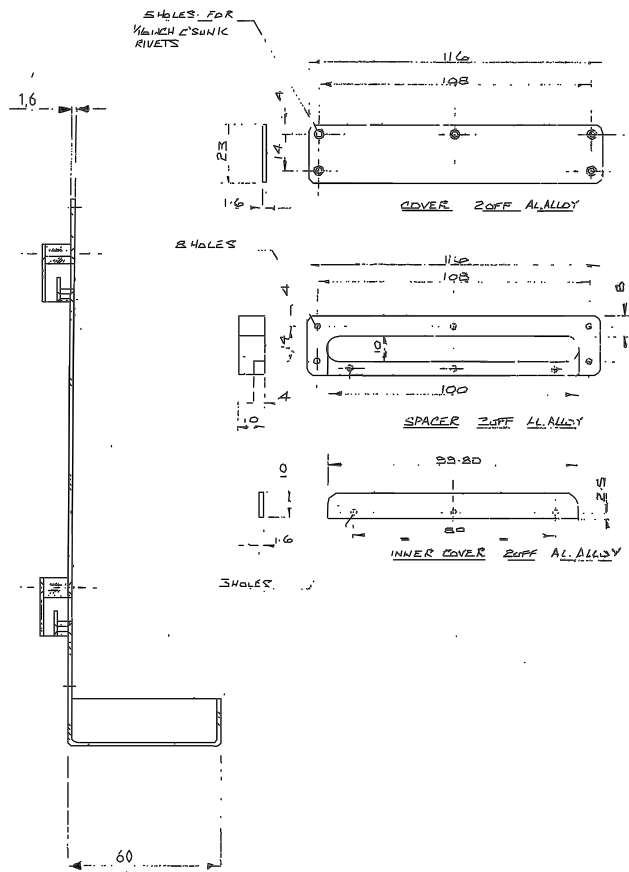
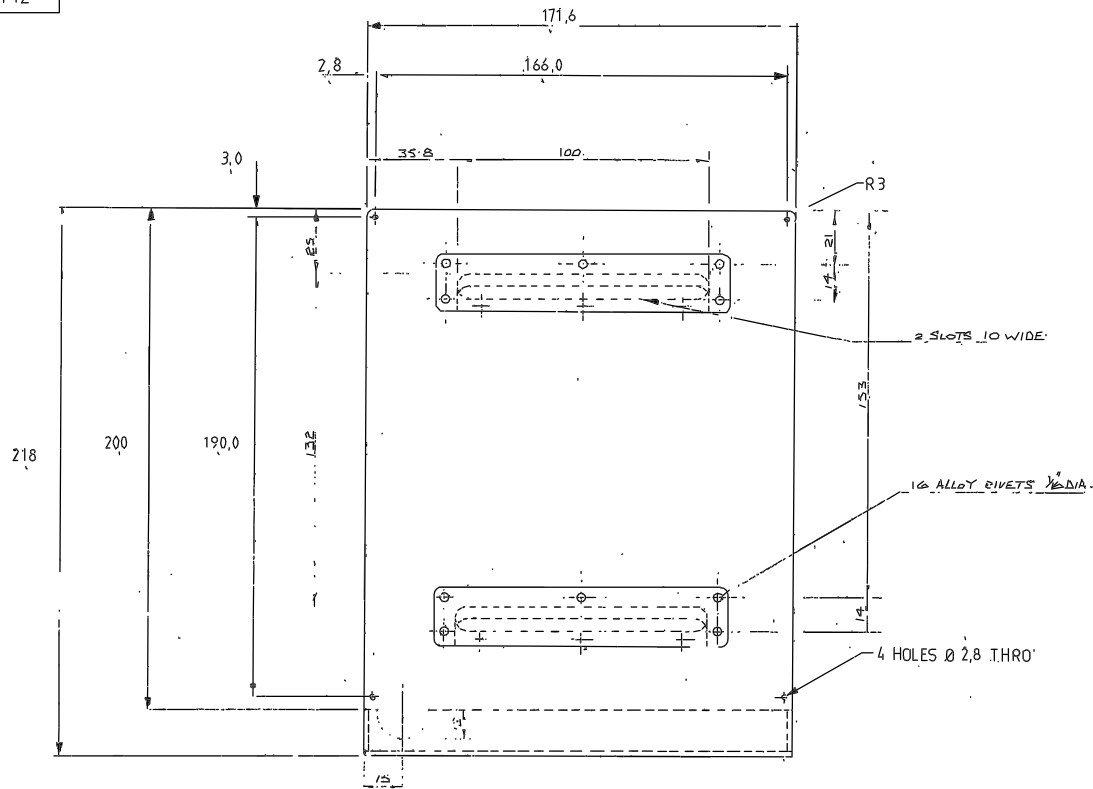


REMOVE SHARP EDGES

TITLE: 16 LAMP SOCKET PLATE		
MATERIAL	SCALE	TOLERANCES
ALCOA	1/1	X ± 0.5
FINISH	NO REQS PER UNIT	XX ± 0.2
MATT BLK ANODISE	1	XXX ± 0.1
G.A. No.	DRAWING No.	
	R.G.O. W/FX / 116	

Tolerance (Limits otherwise stated)				Material		Dimms in mm.		Scale		THIRD ANGLE PROJECTION	
X	±										
XX	±										
XXX	±										
Date: OCT 86				Project: PROMEC		Drawing No.:		Title: DETAIL		Drawing No. 113 TO	
Drawn By:				Used on:		ROYAL GREENWICH OBSERVATORY, HERSTMONCEUX CASTLE, HAILSHAM		SUSSEX.		W/FX / 116	

Drawing No.
W/Fx/112



NOTE : WELDED ASSEMBLY
REMOVE SHARP EDGES

12 LAMP BOX LID		
MATERIAL	SCALE	TOLERANCES
ALUM ALLOY	1:1	X ± 0.5
FINISH	NO REQS PER UNIT	XXX ± 0.2
MATT BLK ANODISE	2	
G.A. No.	DRAWING No.	
	R.G.D. W/Fx/112	

Issue	Mod. No.	Date	Drawn By	Issue	Mod. No.	Date	Drawn By
				1	MAY 87	ETH	
					OCT 86	PROMECC	

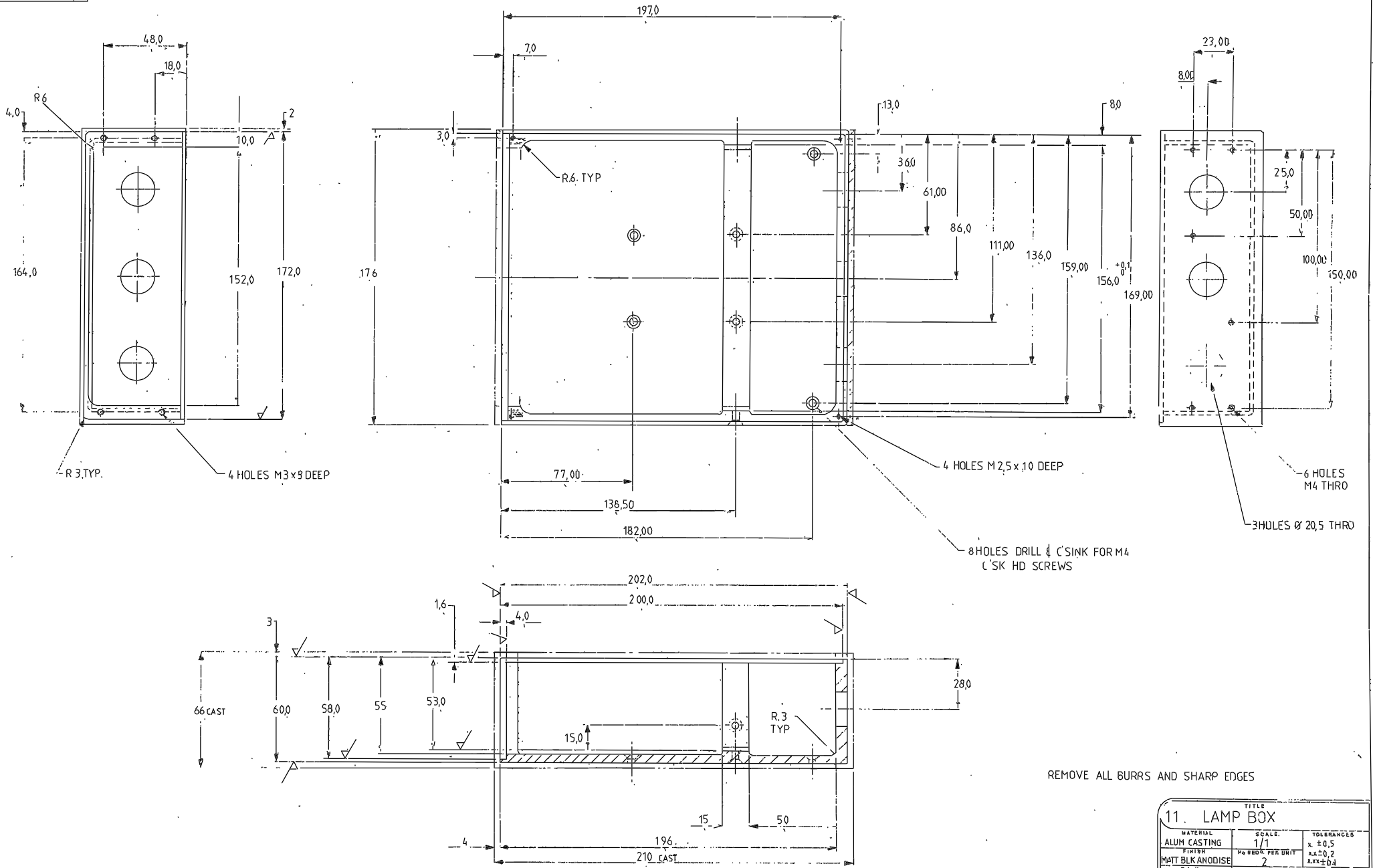
Tolerances (Unless otherwise stated)
X ±
XX ±
XXX ±

Material	Dimm. in num.	Scale
Finish	Drq. No.	No. Req.
	Used on	

ROYAL GREENWICH OBSERVATORY,
HERSTMONCEUX CASTLE,
HAILSHAM SUSSEX

THIRD ANGLE PROJECTION
DETAIL

G.A. No.
Drawing No.
W/Fx/112

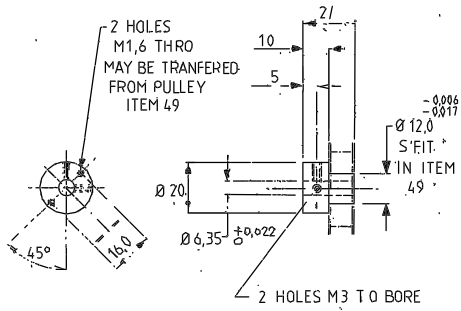


REMOVE ALL BURRS AND SHARP EDGES

TITLE 11. LAMP BOX		
MATERIAL ALUM CASTING	SCALE 1/1	TOLERANCES x ±0,5 xx ±0,2 xxx ±0,1
FINISH MATT BLK ANODISE	No REQ. PER UNIT 7	DRAWING No. W/FX / 111
S.A. No.	R.G.O.	G.A. No.

Tolerances (Unless otherwise stated)								Material		Dwg. in num.		Scale		THIRD ANGLE PROJECTION		G.A. No.	
OCT 86								PROHEC		ROYAL GREENWICH OBSERVATORY, HERSTMONCEUX CASTLE, HAILSHAM		SUSSEX.		Title		Drawing No.	
Issue	Mod. No.	Date	Drawn By	Issue	Mod. No.	Date	Drawn By	Finish	Used on	Org. No.	No. Req.	DETAIL		W/FX / 111			

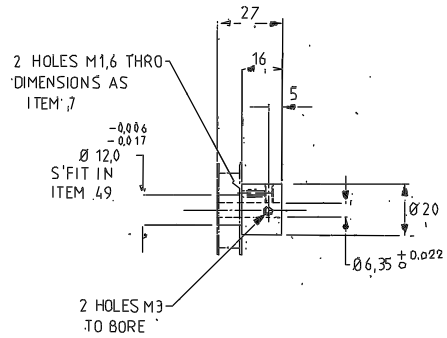
Drawing No. W/Fx/107 TO



PULLEY AL 11-T2.5/40

REMOVE SHARP EDGES.

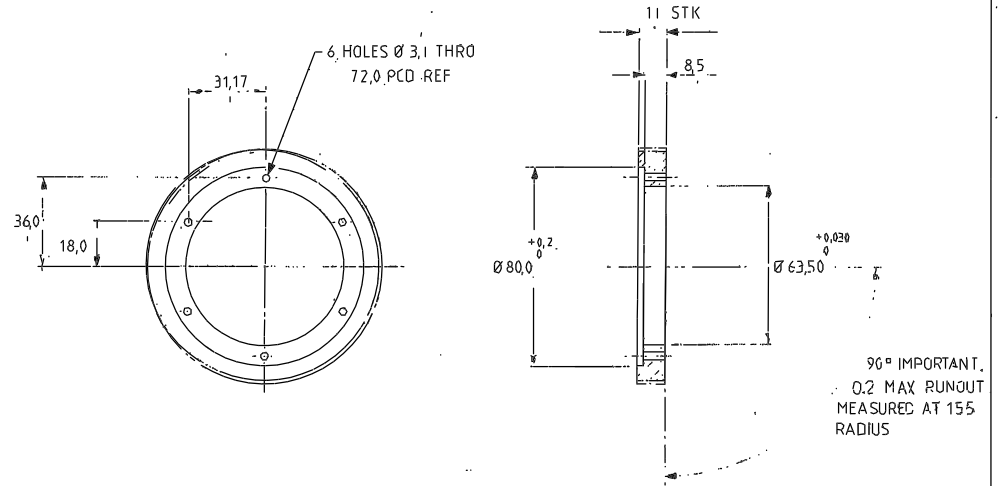
TITLE		
7 DRIVE PULLEY 'A'		
MATERIAL	SCALE	TOLERANCES
ALUM ALLOY	1/1	x ± 0.2
FINISH	NO REQ. PER UNIT	xx ± 0.1
MATT BLK ANODISE	1	xxx
G.A. No.	DRAWING No.	
	R.G.O. W/Fx/107	



PULLEY AL 11-T2.5/40

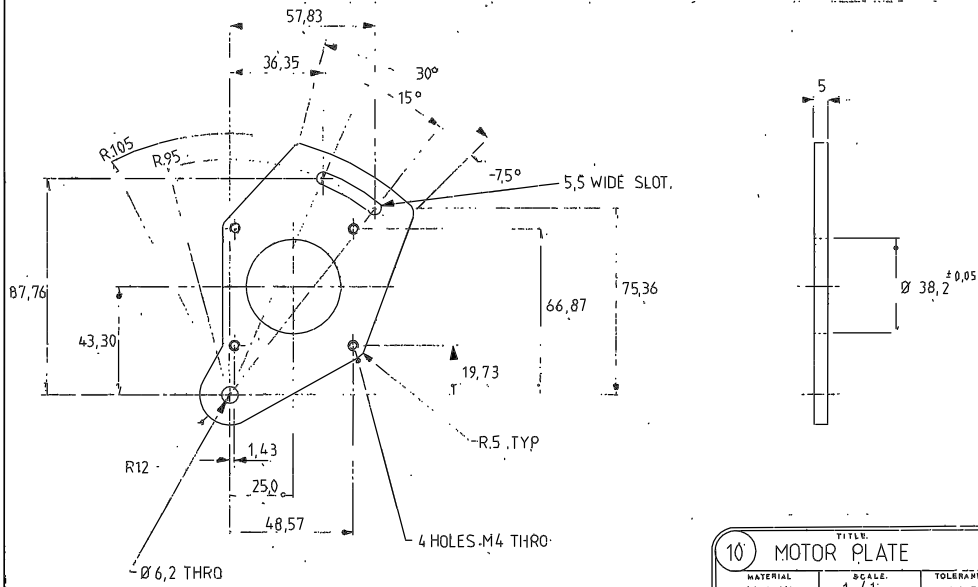
REMOVE SHARP EDGES.

TITLE		
8 DRIVE PULLEY 'B'		
MATERIAL	SCALE	TOLERANCES
ALUM ALLOY	1/1	x ± 0.2
FINISH	NO REQ. PER UNIT	xx ± 0.1
MATT BLK ANODISE	1	xxx
G.A. No.	DRAWING No.	
	R.G.O. W/Fx/108	



MODIFY-TIMING PULLEY-11-T2,5/120 [SYNCHROFLEX]

TITLE		
9 DRIVEN PULLEY		
MATERIAL	SCALE	TOLERANCES
SEE DRAWING	1/1	x ± 0.2
FINISH	NO REQ. PER UNIT	xx ± 0.1
MATT BLK ANODISE	2	xxx
G.A. No.	DRAWING No.	
	R.G.O. W/Fx/109	

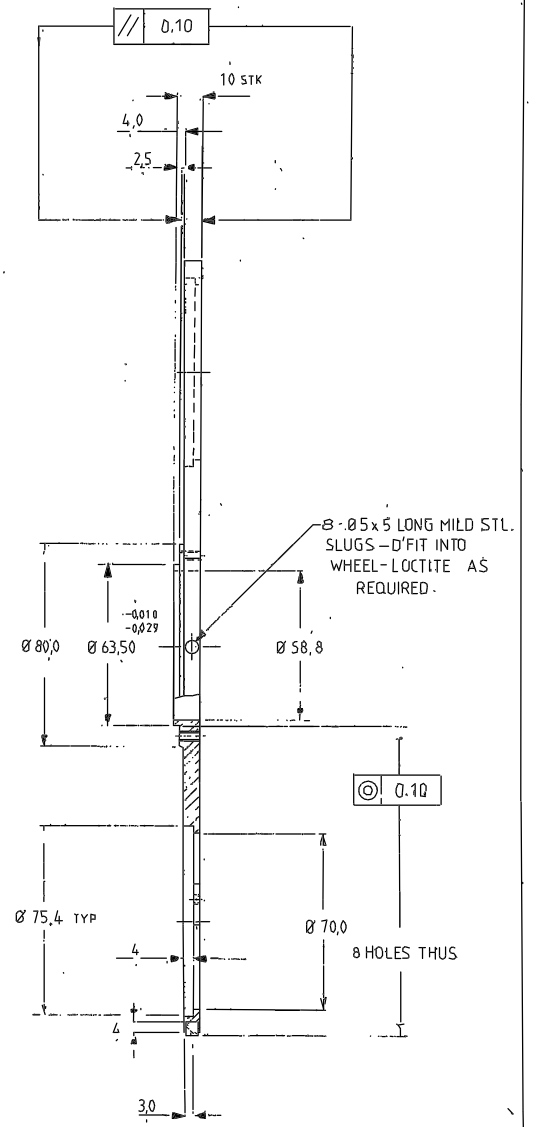
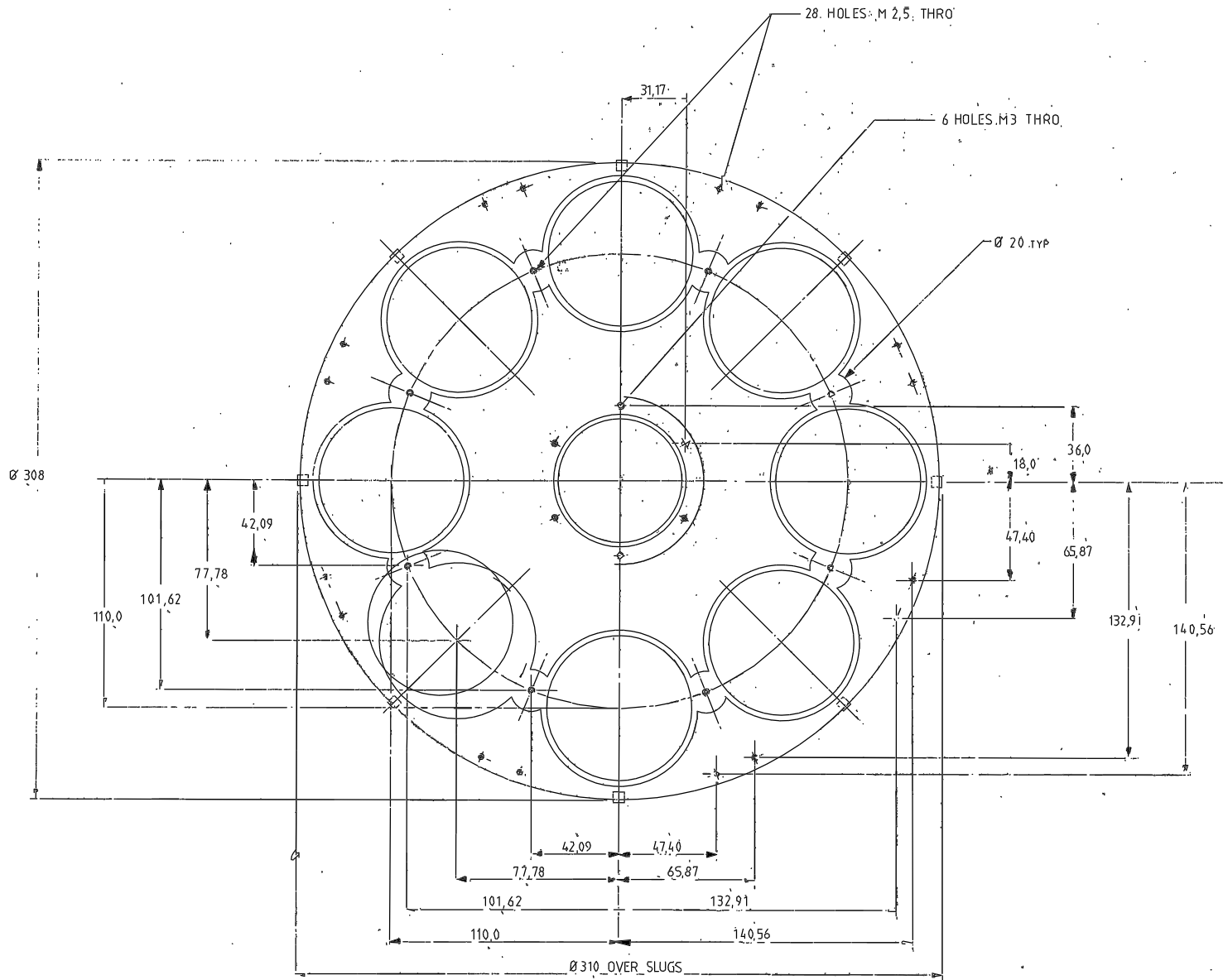


REMOVE SHARP EDGES

TITLE		
10 MOTOR PLATE		
MATERIAL	SCALE	TOLERANCES
ALUM ALLOY	1/1	x ± 0.5
FINISH	NO REQ. PER UNIT	xx ± 0.2
MATT BLK ANODISE	2	xxx ± 0.1
G.A. No.	DRAWING No.	
	R.G.O. W/Fx/110	

Tolerances (Unless otherwise stated)				Material		Dimts in m.m.		Scale		THIRD ANGLE PROJECTION		G.A. No.	
x ±				Finish		ROYAL GREENWICH OBSERVATORY, HERSTMONCEUX CASTLE, HAILSHAM		Title		DETAILS		Drawing No.	
xx ±				Drg. No.		SUSSEX.						W/Fx/107 TO	
xxx ±				Used on								110	

Drawing No.
W/FX/106

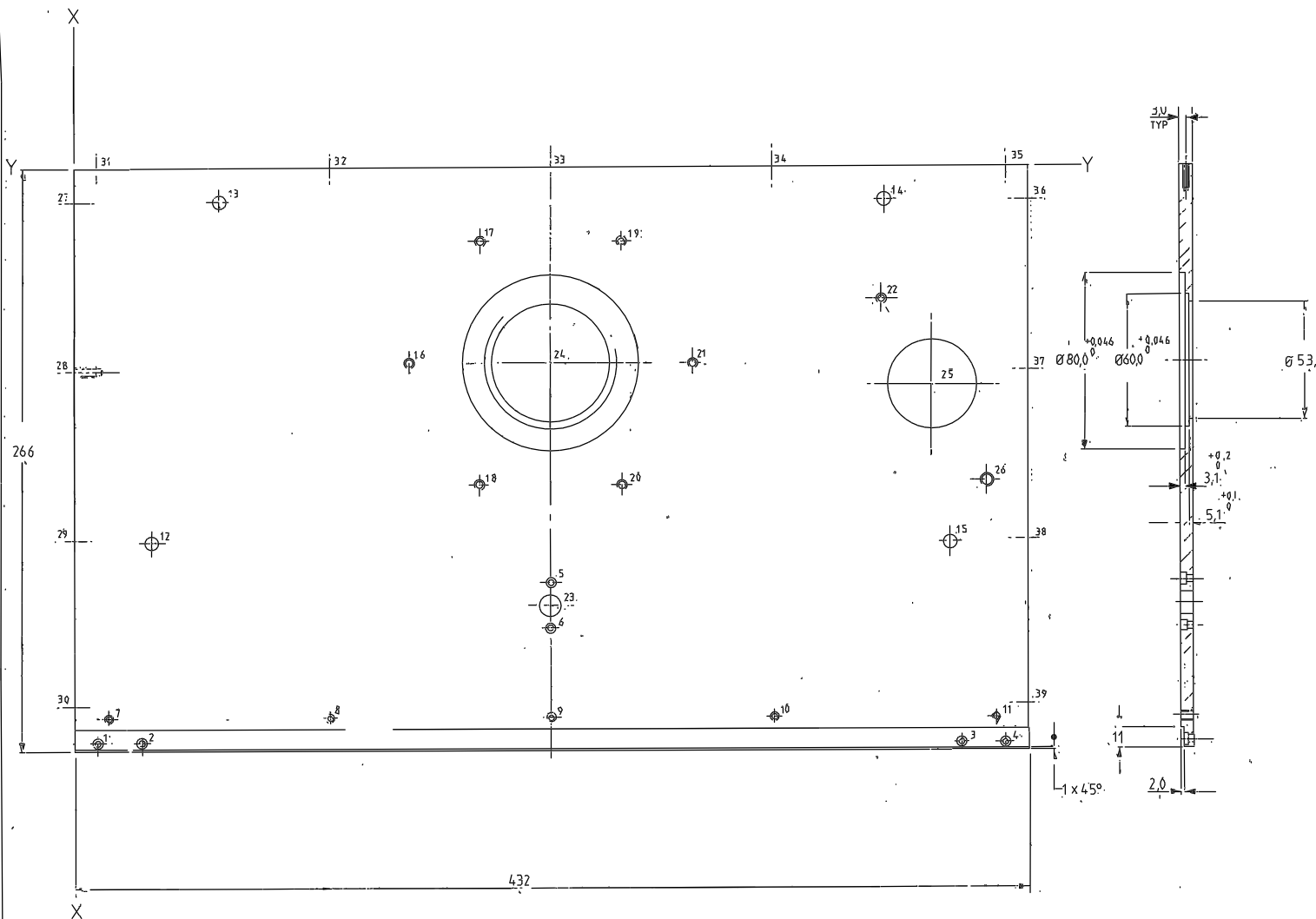


6. FILTER WHEEL 'A'		
MATERIAL ALCOA PLT	SCALE 1/1	TOLERANCES x ± 0.5
FILTER MATT BLK ANODISE	NO REQ PER UNIT 1	XX ± 0.2 XXX
D.A. No.	DRAWING No. R.G.O. W/FX/106	

REMOVE ALL BURRS AND SHARP EDGES

Tolerances (Unless otherwise stated)						Material		Dimms in m.m.		Scale		THIRD ANGLE PROJECTION		TITLE	
OCT 86 PROMEC						Finish		ROYAL GREENWICH OBSERVATORY, HERSTMONCELIX CASTLE HAILSHAM		Scale		DETAIL		Drawing No. W/FX/106	
Issue	Mod. No.	Date	Drawn By	Issue	Mod. No.	Date	Drawn By	Dr. No.	No. Rec.	Used on					

Drawing No.
W/FX/105.



HOLE	X	Y	SIZE
1	10,00	262,00	Ø3,2 THRO-C BORE Ø5,7x2DP
2	30,00	262,00	"
3	402,00	262,00	"
4	422,00	262,00	"
5	216,00	190,00	Ø3,2 THRO-C BORE Ø5,7x3DP
6	216,00	210,00	"
7	15,00	251,00	M2,5 THRO
8	115,50	251,00	"
9	216,00	251,00	"
10	316,50	251,00	"
11	417,00	251,00	"
12	35,00	170,00	Ø6,2 THRO
13	65,00	15,00	"
14	367,00	15,00	"
15	397,00	170,00	"
16	152,00	90,00	M5 THRO
17	184,00	34,58	"
18	184,00	145,42	"
19	248,00	34,58	"
20	248,00	145,42	"
21	280,00	90,00	"
22	364,10	62,53	"
23	216,00	200,00	Ø10,0 ^{+0,022}
24	216,00	90,00	SEE DRAWING
25	386,60	101,50	Ø40,0 THRO
26	411,60	144,80	M6 THRO
27	—	15,00	M2,5 x 10 DEEP
28	—	92,00	"
29	—	169,00	"
30	—	246,00	"
31	10,00	—	"
32	115,50	—	"
33	216,00	—	"
34	316,50	—	"
35	422,00	—	"
36	—	15,00	"
37	—	92,00	"
38	—	169,00	"
39	—	246,00	"

NOTE: OVERALL SIZES TO MATCH ITEM 4

PAINT EXTERNAL SURFACE GLOSS BR4800 OB B/S
REMOVE ALL BURRS AND SHARP EDGES.

5 FILTER BOX TOP PLATE			
MATERIAL	SCALE	TOLERANCES	
ALCOA PLY	1:1	X ± 0.5	
MATT BLK ALU OXISE	PER REQ PER UNIT	XX ± 0.2	
D.A. No.	R.G.O.	XXX ± 0.1	
DRAWING No. W/FX/105		G.A. No.	

Issue	Mod. No.	Date	Drawn By	Issue	Mod. No.	Date	Drawn By

Tolerances (Unless otherwise stated)
X ±
XX ±
XXX ±

Material	Finish	Dimms. in m.m.	Scale

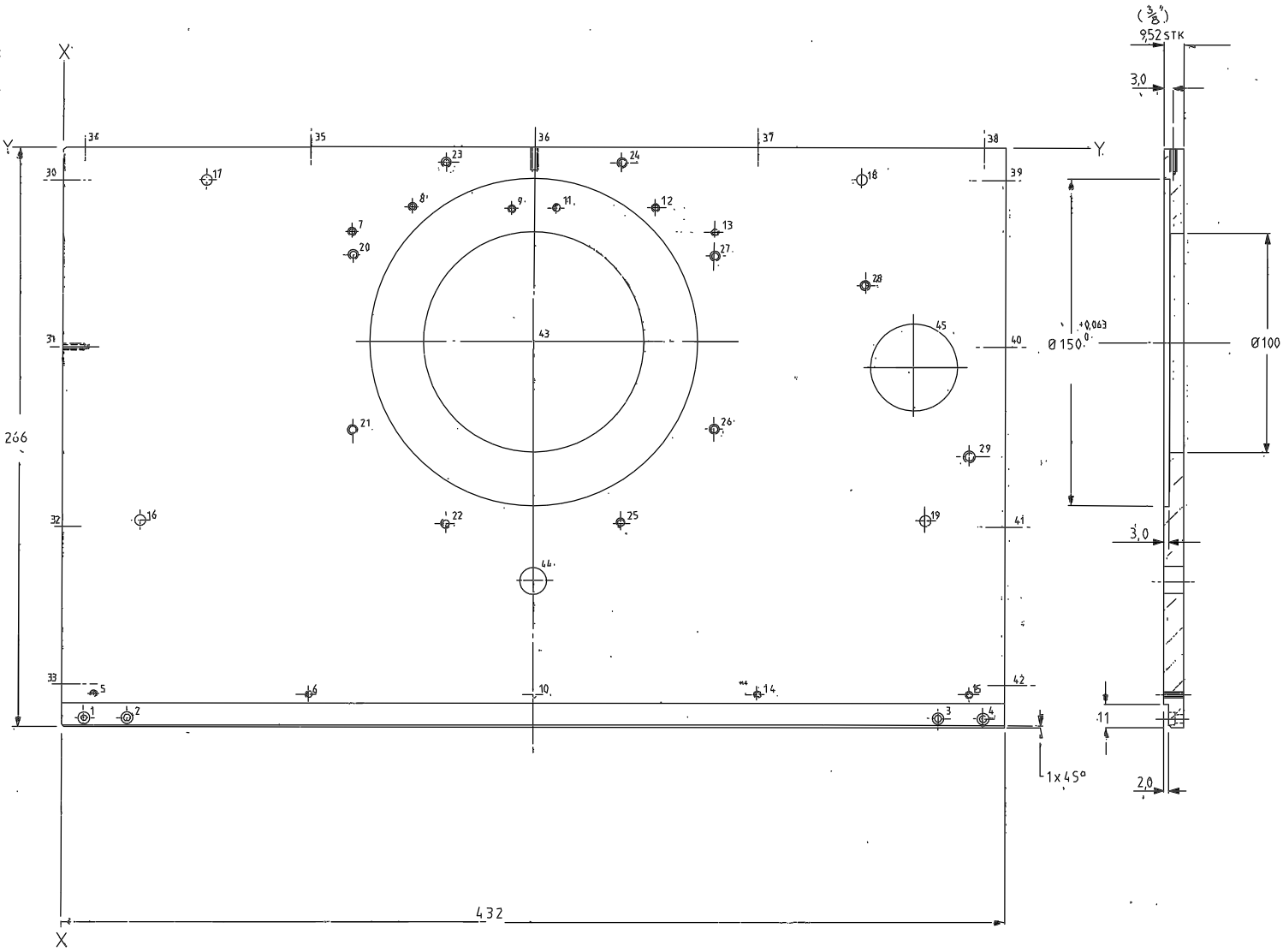
ROYAL GREENWICH OBSERVATORY,
HERSTMONCEUX CASTLE,
HAILSHAM SUSSEX.

Dr. No.	No. Req.

THIRD ANGLE PROJECTION
DETAIL

Drawing No.
W/FX/105

Drawing No
W/FX/104



HOLE	X	Y	SIZE
1	10,00	262,00	Ø 3,2 THRO-C'BORE Ø 5,7x30,P
2	30,00	262,00	↓ ↓
3	402,00	262,00	↑ "
4	422,00	262,00	↓ "
5	15,00	251,00	M2,5 THRO
6	115,50	251,00	↓ ↓
7	133,26	39,45	M4 "
8	160,98	27,97	" "
9	206,00	28,00	" "
10	216,00	251,00	M2,5 "
11	226,00	28,00	M4 "
12	271,02	27,97	" "
13	298,74	39,45	" "
14	316,50	251,00	M2,5 "
15	417,00	251,00	" "
16	35,00	170,00	Ø 6,2 THRO
17	65,00	15,00	" "
18	367,00	15,00	" "
19	397,00	170,00	" "
20	133,50	50,00	M5 THRO
21	133,50	130,00	" "
22	176,00	172,50	↓ ↓
23	176,00	7,50	" "
24	256,00	7,50	" "
25	256,00	172,50	" "
26	298,50	130,00	" "
27	298,50	50,00	" "
28	364,10	62,50	" "
29	411,60	144,80	M6 THRO
30	—	15,00	M2,5 x 10 DEEP
31	—	92,00	" "
32	—	169,00	" "
33	—	246,00	" "
34	10,00	—	" "
35	115,50	—	" "
36	216,00	—	" "
37	316,50	—	" "
38	422,00	—	" "
39	—	15,00	" "
40	—	92,00	" "
41	—	169,00	" "
42	—	246,00	" "
43	216,00	90,00	SEE DRAWING
44	216,00	200,00	Ø 12,00 ^{+0,027} THRO
45	386,60	101,50	Ø 40,0 THRO

PAINT EXTERNAL SURFACE GLOSS TO RS-1800 OR B/S EXCEPT ISO SPIRIT DIA. & RECESSES

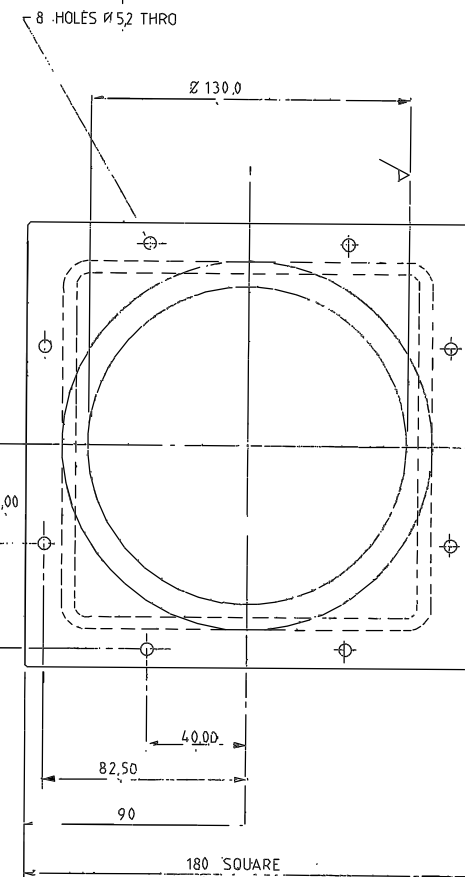
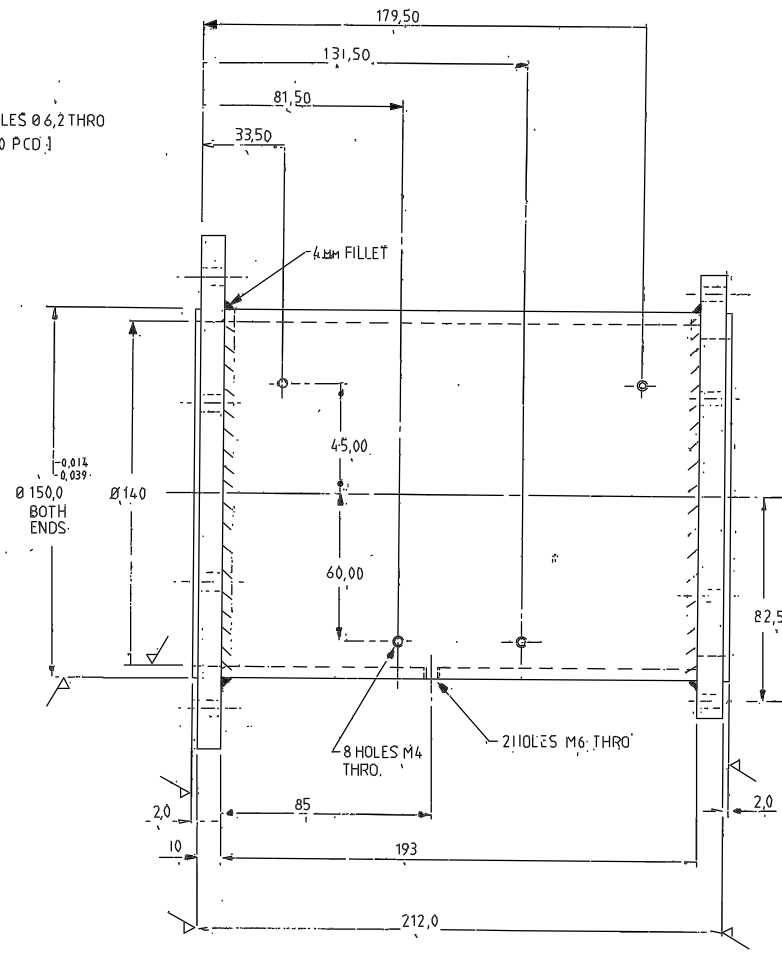
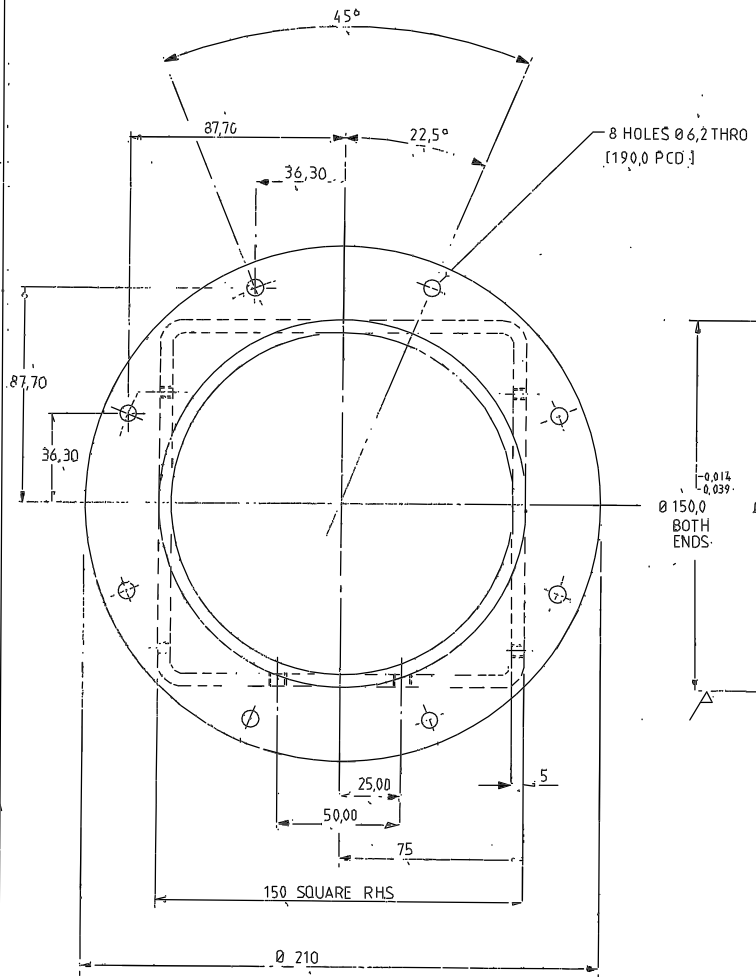
REMOVE ALL BURRS AND SHARP EDGES.

4			TITLE FILTER BOX BASE PLATE		
MATERIAL ALCOA PLT	SCALE 1/1	TOLEANCES X ± 0,5			
FINISH MATT BLK ANODISE	NO REQ PER UNIT 1	X ± 0,2			
DRAWING No W/FX/104	R.G.O.	X ± 0,1			

Tolerances (Unless otherwise stated)						Material		Dimms in mm		Scale		THIRD ANGLE PROJECTION		Title	
X ±								ROYAL GREENWICH OBSERVATORY, HERSTMONCEUX CASTLE, HAILSHAM						DETAIL	
X.X ±						Finish		Org. No.		No. Req.				Drawing No.	
X.XX ±								Used on.						W/FX/104	
Issue	Mod. No.	Date	Drawn By	Issue	Mod. No.	Date	Drawn By								
				OCT 86	PROMEC										

Drawing No.

W/FX/102



STRESS RELIEVE & M/C AT ✓

CONTINUOUS WELD AT
FINISH: PRIME & PAINT MATT BLACK
REMOVE ALL BURRS AND SHARP EDGES

2 DISTANCE MOUNTING		
MATERIAL: MILD STL FABN	SCALE: 1/1	TOLERANCES: x ± 0,5
FINISH: SEE DRAWING	NO REQ PER UNIT: 1	x ± 0,2
D.A. No.	DRAWING No. W/FX/102	xxx ± 0,1
R.G.C.		

Issue	Mod. No.	Date	Drawn By	Issue	Mod. No.	Date	Drawn By
		OCT 86	PROMEC				

Tolerances (Unless otherwise stated)
x ±
XX ±
XXX ±

Material
Finish: *EXTERNALLY GLOSS PAINT BS-4800 6985*

Dim's in mm. Scale
Dwg No. No. Rev.
Used on:

ROYAL GREENWICH OBSERVATORY,
HERSTMONCEUX CASTLE,
HAILSHAM SUSSEX.

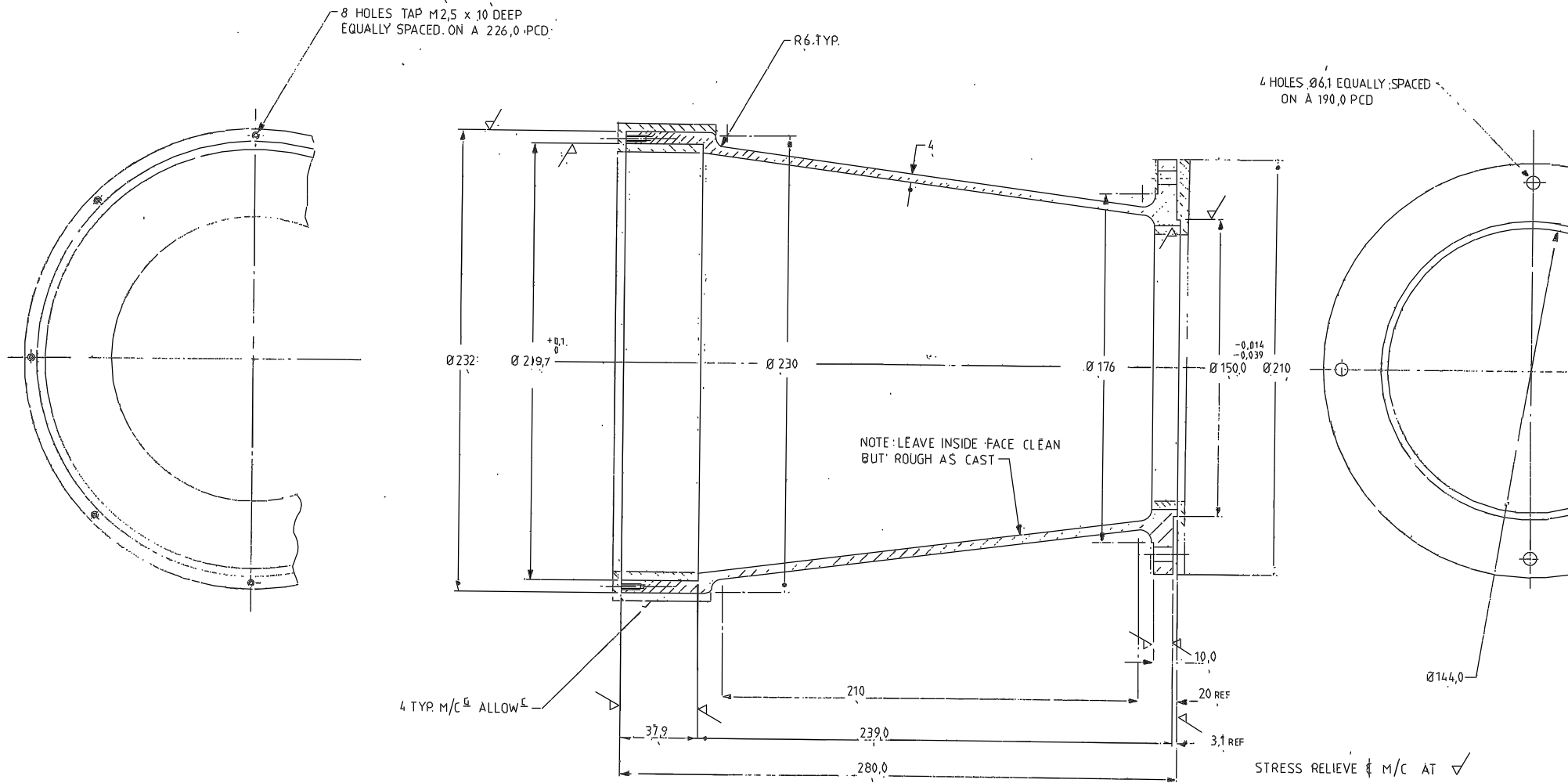
Title

DETAIL

THIRD ANGLE PROJECTION

Drawing No.
W/FX/102

Drawing No.
W/FX/101



NOTE: LEAVE INSIDE FACE CLEAN BUT ROUGH AS CAST

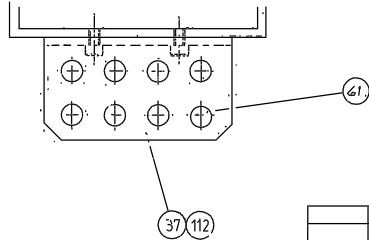
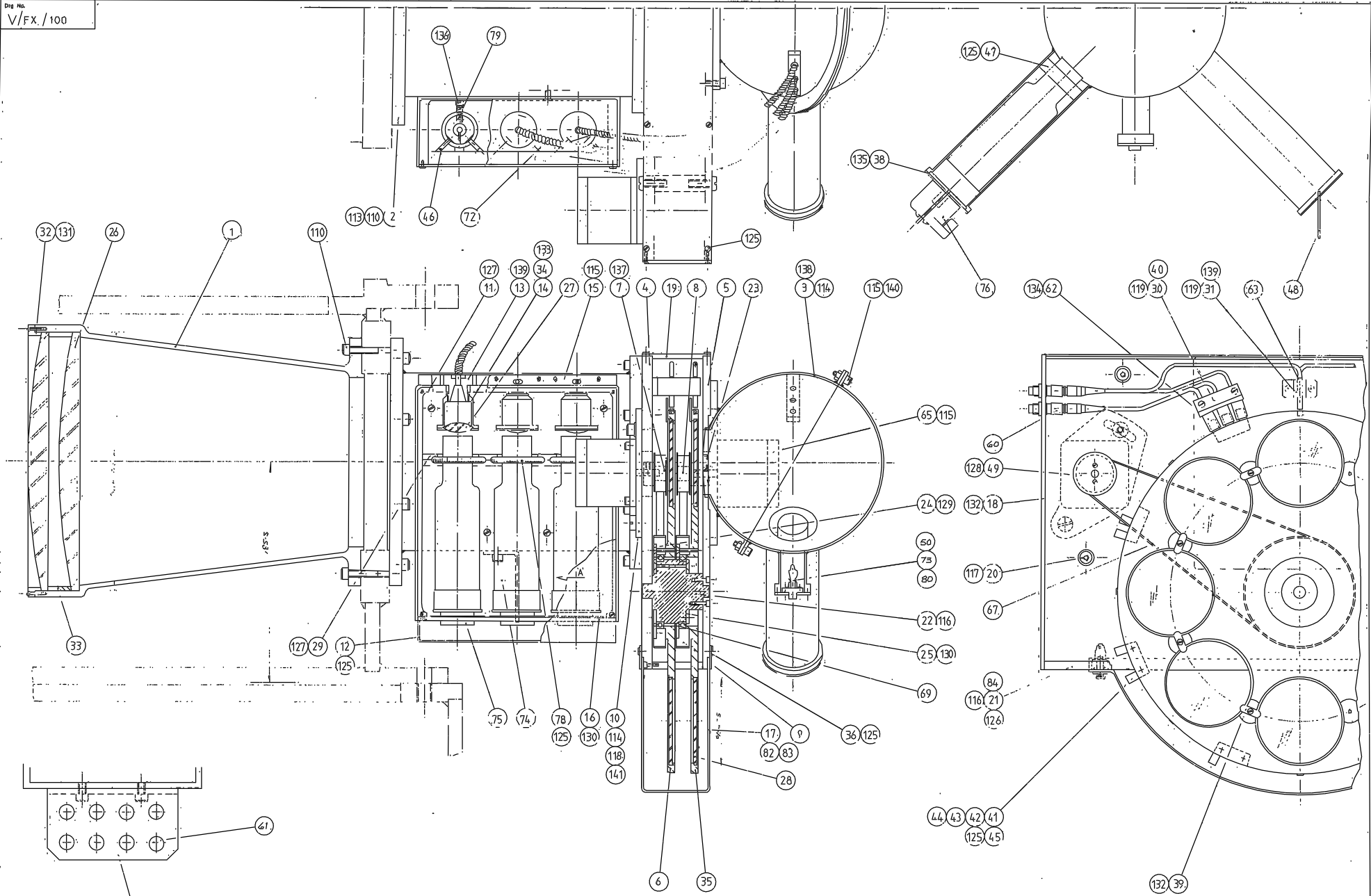
STRESS RELIEVE M/C AT ✓

REMOVE ALL BURRS AND SHARP EDGES

1 FIELD LENS CELL		
MATERIAL	SCALE	TOLERANCES
ALUM. CASTING	1/1	± 0.5
FINISH	NO. PER UNIT	± 0.2
MATT BLK ANODISE	1	± 0.2
D.A. No.	DRAWING No.	
	W/FX/101	

Tolerances (Unless otherwise stated)						Material		Dimms in m.m.		Scale		Title	
X	±												
XX	±												
XXX	±												
Issue	Mod. No.	Date	Drawn By	Issue	Mod. No.	Date	Drawn By	Drng. No.	No. Rev.	ROYAL GREENWICH OBSERVATORY, HERSTMONCEUX CASTLE, HAILSHAM		THIRD ANGLE PROJECTION	
										DETAIL		G.A. No.	

G.A. No.
W/FX/101



		OCT 86		PROMEC		Tolerances (unless otherwise stated)		Material		Dimms in m.m.		Scale FULL SIZE		THIRD ANGLE PROJECTION		G.A. No	
		OCT 86		PROMEC		X ±		Finish		Drp. No		No. Rec.		ROYAL GREENWICH OBSERVATORY, HERSTMONCEUX CASTLE, HAILSHAM		Drawing No.	
		OCT 86		PROMEC		X.X ±		Used on						42 m. A & G CASE 1.		V/FX./100	
		OCT 86		PROMEC		X.XX ±								COMPARISON SYSTEM ASSEMBLY			