

REMOVE ALL BURRS

TITLE		
27 FILTER MOUNTING BRKT		
MATERIAL	SCALE	TOLERANCES
M.S. FABRICATION	1:1	xx ± 0,5
FINISH	NO REQ. PER UNIT	xxx ± 0,1
BLK NICKEL PL1	1	
G.A. No.	R.G.O.	DRAWING No.
W/FX/150	W	FX/177

TITLE		
28 FILTER WHEEL		
MATERIAL	SCALE	TOLERANCES
ALCOA PLT	1:1	xx ± 0,5
FINISH	NO REQ. PER UNIT	xxx ± 0,1
MATT BLK ANODISE	1	
G.A. No.	R.G.O.	DRAWING No.
W/FX/150	W	FX/178

Issue	Mod. No.	Date	Drawn By	Issue	Mod. No.	Date	Drawn By
			JAWB7				BTH

Tolerances (Unless otherwise stated)		Material
x	±	
xx	±	
xxx	±	

Dimms in m.m.		Seals
Drg. No.	No. Req.	
Used on		

THIRD ANGLE PROJECTION		Title
		DETAIL

G.A. No.	
Drawing No. 177 W/FX/178	

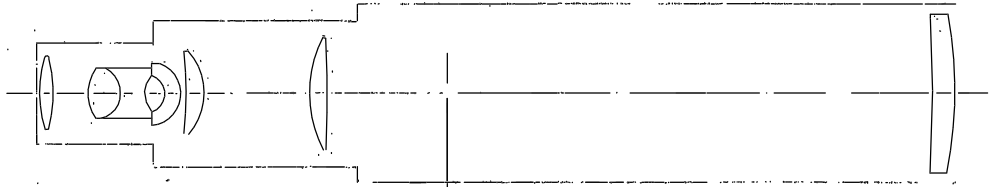
DRAWING NUMBER	No. of Sheets	G.A. Item No.	DRAWING TITLE OR COMPONENT NAME	Job No.	MATERIAL STOCK OR ORDER No. AND DATE	REMARKS	ISSUE DATE	ISSUED TO	FINISH DATE
/ /		107	SOCKET HD CAP SCR M8 - 20 LONG	6					
/ /		108	" " M6 - 20 "	19					
/ /		109	" " M6 - 16 "	7					
/ /		110	" " M5 - 25 "	14					
/ /		111	" " M5 - 20 "	18					
/ /		112	" " M5 - 16 "	29					
/ /		113	" " M4 - 16 "	8					
/ /		114	" " M4 - 10 "	8					
/ /		115	" " M3 - 20 "	1					
/ /		116	" " M3 - 10 "	10					
/ /		117	" " M2,5 - 10 "	6					
/ /		118	" " M2,5 - 5 "	3					
/ /									
/ /		120	C'SK SCR M6 - 16 LONG	6					
/ /		121	" " M5 - 16 "	20					
/ /		122	" " M4 - 20 "	6					
/ /		123	" " M4 - 16 "	5					
/ /		124	" " M3 - 10 "	4					
/ /		125	" " M3 - 8 "	2					
/ /		126	" " M2,5 - 16 "	6					
/ /		127	" " M2,5 - 10 "	8					
/ /		128	" " M2,5 - 5 "	12					
/ /		129	" " M1,6 - 8 "	3					
/ /									
/ /		131	RD HD SCR M2,5 - 10 "	2					
/ /		132	PAN HD SCR M2,5 - 5 "	35					
/ /									
/ /									
/ /		135	GRUB SCR M4 - 5 LONG	1					
/ /		136	" " M3 - 5 "	3					
/ /		137	" " M2 - 5 "	1					
/ /									
/ /									
/ /		140	NUT M6	4					
/ /		141	" M3	2					
/ /									
JOB TITLE 4,2 MA & G UNIT CASE 1 / TV & FOCAL REDUCING ARRANGEMENT						ASSY DRG. No. VJ FX/ 150	SHEET No. 4 OF 5	DRAWN BY PROMEC LTD DATE JAN 87	
ROYAL GREENWICH OBSERVATORY,						HERSTMENCEUX CASTLE,	HAILSHAM,	SUSSEX	

DRAWING NUMBER	No. of Sheets	G.A. Item No.	DRAWING TITLE OR COMPONENT NAME	No. of	MATERIAL STOCK OR ORDER No. AND DATE	REMARKS	ISSUE DATE	ISSUED TO	FINISH DATE
W/FX/185	1	35	SIDE PLT (BACK)	1					
W/FX/186	1	36	SIDE PLT (FRONT)	1					
W/FX/187	1	37	BASE PLT	1					
W/FX/188	1	38	R H END PLT	1					
/ / 189		39	L H END PLT	1					
W/FX/190	1	40	LENS MOUNT $\varnothing 105 \pm \varnothing 70$	1					
/ / 191		41	PLATE	1					
W/FX/192/1/2	1	42	BLOCK A & BLOCK B	1 OFF EACH					
W/FX/193		43	LEVERS	1 OFF EACH					
W/FX/194	1	44	BALL NUT HOUSING	1					
/ / 195		45	PROXIMITY SWITCH BRKT	1					
/ / 196		46	BRAKE MTG PLT	1					
/ / 197		47	BEARING HOUSING	1					
/ / 198		48	TIE ROD	4					
/ / 199		49	BEARING HOUSING	1					
W/FX/200		50	SCREWS	1 OFF EACH					
W/FX/201	1	51	LEAD SCREW DRG ONLY	1		SEE ITEM 71			
/ / 202		52	LEAD SCREW (SHORT) DRG ONLY	1		" " 72			
/ / 203		53	HETTICH SWITCH SRKT	1					
/ / 204		54	SWITCH FLAG	1					
/ / 205		55	BRAKE SPINDLE	1					
W/FX/206	1	56	BRAKE SPINDLE	1					
/ / 207		57	CENTRE STOP BLOCK	1					
/ / 208		58	RH STOP BLOCK	1					
/ / 209		59	LH STOP BLOCK	1					
/ / 210		60	LENS KEY	4					
/ / 211		61	LEMO BRACKET	1					
/ / 212		62	BRACKET TV. FOCUS HETTICH	1					
/ / 213		63	ADJUSTER PLATE	2					
/ / 214		64	FLAG	1					
/ / 215		65	ADJUSTER PLATE A	2					
/ / 216		66	LEVER	2					
/ / 217		67	ADJUSTER PLATE B	1					
/ / 218		68	ADJUSTER PLATE C	1					
/ / 219		69	ADJUSTER PLATE D	2					
/ /									
JOB TITLE 4,2 M AEG UNIT CASE 1 / TV & FOCAL REDUCING ARRANGEMENT						ASSY DRG. No. V/FX/150	SHEET No. 2 OF 5	DRAWN BY PROMEC LTD	
ROYAL GREENWICH OBSERVATORY, HERSTMONCEUX CASTLE, HAILSHAM, SUSSEX								DATE JAN 87	

DRAWING NUMBER	No. of Sheets	G.A. Item No.	DRAWING TITLE OR COMPONENT NAME	No of	MATERIAL STOCK OR ORDER No. AND DATE	REMARKS	ISSUE DATE	ISSUED TO	FINISH DATE
V / F X / 150	1		GENERAL ASSY						
/ /									
W / F X / 151	1	1	END PLATE	1					
W / F X / 152	1	2	R H SIDE PLT	1					
/ / 153		3	L H SIDE PLT	1					
W / F X / 154	1	4	BASE PLT	1					
W / F X / 155	1	5	COVER	1					
W / F X / 156	1	6	CAMERA MTG PLT	1					
/ / 157		7	SPACER (SLIDE)	1					
/ / 158		8	SLIDE DRG ONLY	1		SEE ITEM 73			
W / F X / 159	1	9	TIE ROD	4					
/ / 160		10	SPACER	1					
/ / 161		11	BRAKE MTG PLT	1					
/ / 162		12	L V D T BRKT	1					
/ / 163		13	MOTOR MTG PLT	1					
/ / 164		14	SPACER	1					
W / F X / 165	1	15	BEARING HOUSING	1					
/ / 166		16	BALL NUT HOUSING	1					
/ / 167		17	BALL NUT KEY	2					
/ / 168		18	RETAINING RING	3					
/ / 169		19	END PLT	2					
/ / 170		20	BEARING WASHER	2					
W / F X / 171	1	21	BELLOWS	1					
W / F X / 172	1	22	BELLOWS PLT	1					
/ / 173		23	DEDENT SPRING	1					
/ / 174		24	DEDENT BRKT	1					
/ / 175		25	DEDENT ROLLER	1					
/ / 176		26	CAMERA KEY	2					
W / F X / 177	1	27	FILTER MTG BRKT	1					
/ / 178		28	FILTER WHEEL	1					
W / F X / 179	1	29	FILTER WHEEL PLT	1					
/ / 180		30	SPINDLE	1					
/ / 181		31	PULLEY DRG ONLY	1		SEE ITEM 74			
/ / 182		32	BUSH	1					
/ / 183		33	THRUST WASHER	1					
W / F X / 184	1	34	LENS CARRIDGE	1					
JOB TITLE						ASSY DRG. No.	SHEET No.	DRAWN BY PROMEC LTD	
4, 2H A & G UNIT CASE I / TV & FOCAL REDUCING ARRANGEMENT						V / F X / 150	1 OF 5	DATE JAN 87	
ROYAL GREENWICH OBSERVATORY,						HERSTMONCEUX CASTLE,	HAILSHAM,	SUSSEX	

Drawing No.
W/FX/220/1-2

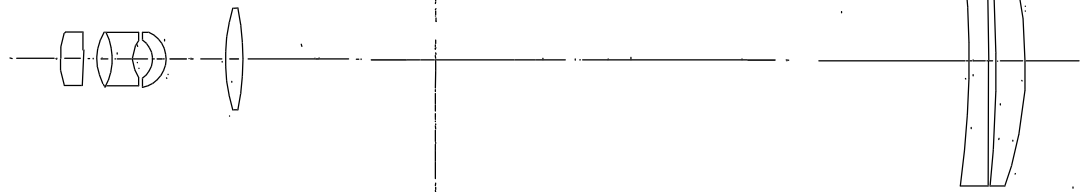
SURFACE NO	RADIUS OF CURVATURE	AXIAL SEPARATION	MATERIAL	CLEAR DIAMETER	FULL DIAMETER	REMARKS
1	42.61			25.8		
		5.68	GLASS			
2	54.81			25.3		
		13.73	AIR			
3	17.08			16.08		
		11.97	GLASS			
4	18.83			14.38		
		9.95	AIR			
5	10.70			12		
		7.40	AIR			
6	7.26			13.16		
		6.58	GLASS			
7	12.43			21.2		
		1.49	AIR			
8	152.57			28.4		
		7.05	GLASS			
9	23.74			30.04		
		32.66	AIR			
10	49.16			37.16		
		6.40	GLASS			
11	821.51			36.92		
		236.45	AIR			
12	622.37			53.8		
		9.56	GLASS			
13	162.91			56.14		



SCALE 10 ARC / MM

TITLE		
94 SLIT VIEWING RELAY		
MATERIAL	SCALE	TOLERANCES
SEE LEGEND	1:1	X
FINISH	NO REQS PER UNIT	X.X
	1 SYSTEM	X.XX
B.A. No.	DRAWING No.	
V/FX/150	R.G.O. W/FX/220/1	

SURFACE NO	RADIUS OF CURVATURE	AXIAL SEPARATION	MATERIAL	CLEAR DIAMETER	FULL DIAMETER	REMARKS
1	35.5			18.0		
		9.6	GLASS			
2	56.0			19.0		
		4.4	AIR			
3	21.3			19.0		
		6.3	GLASS			
4	22.6			18.0		
		3.0	AIR			
5	12.5			14.0		
		7.7	AIR			
6	8.6			15.0		
		4.6	GLASS			
7	11.3			20.0		
		23.3	AIR			
8	71			36.0		
		6.2	GLASS			
9	38			36.0		
		222.3	AIR			
10	336			38		
		7.0	GLASS			
11	134.6			38		
		2.9	AIR			
12	512			30		
		11.5	GLASS			
13	153			32		

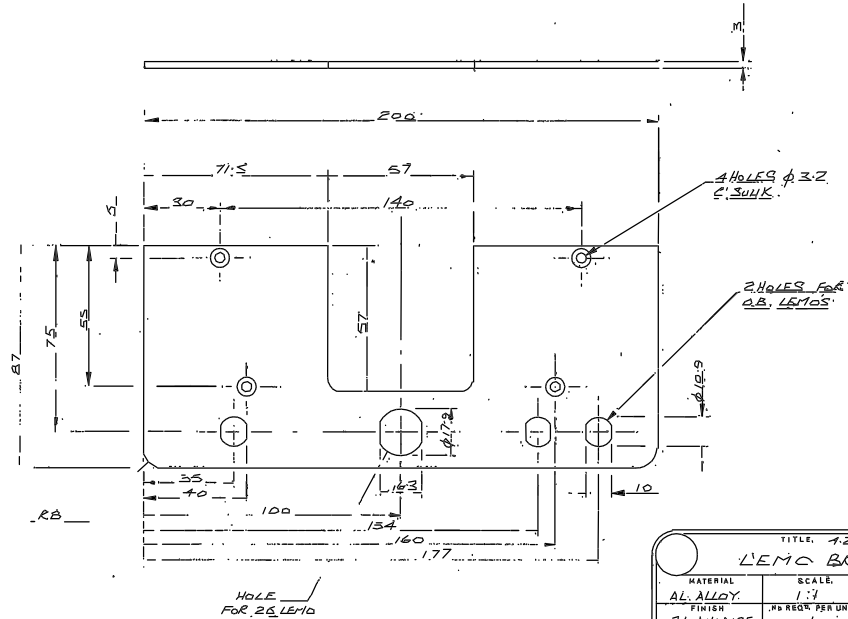


SCALE 10 ARC / MM

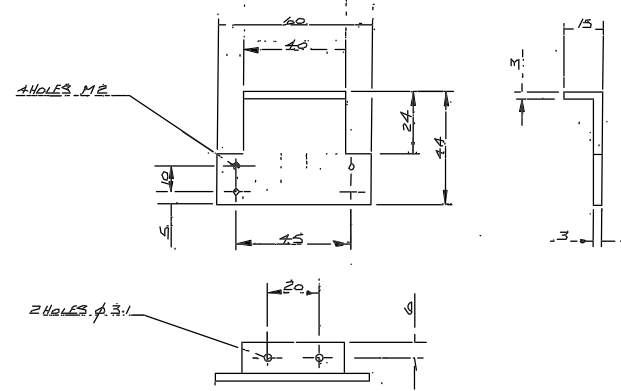
TITLE		
95 ACQUISITION RELAY		
MATERIAL	SCALE	TOLERANCES
SEE LEGEND	1:1	X
FINISH	NO REQS PER UNIT	X.X
	1 SYSTEM	X.XX
B.A. No.	DRAWING No.	
V/FX/150	R.G.O. W/FX/220/2	

Issue	Mod. No.	Date	Drawn By	Issue	Mod. No.	Date	Drawn By	Tolerances (Unless otherwise stated)	Material	Dimms in m.m.	Scale	THIRD ANGLE PROJECTION	Title	B.A. No.	Drawing No.
								X X.X X.XX			1:1	ROYAL GREENWICH OBSERVATORY, HERSTMONCEUX CASTLE, HAILSHAM SUSSEX.	94 SLIT VIEWING RELAY		
												ROYAL GREENWICH OBSERVATORY, HERSTMONCEUX CASTLE, HAILSHAM SUSSEX.	95 ACQUISITION RELAY		
												ROYAL GREENWICH OBSERVATORY, HERSTMONCEUX CASTLE, HAILSHAM SUSSEX.	FOCAL REDUCING SYSTEMS FOR VIEWING WITH TV.		W/FX/220/1-2

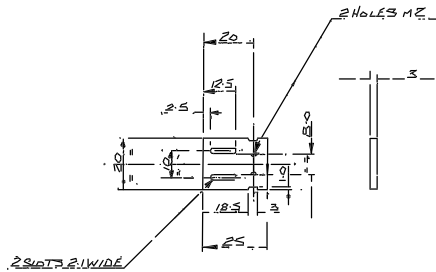
Drawing No.
W/FX/211-214.



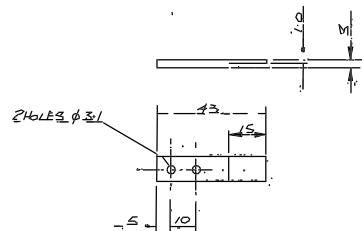
TITLE: 12 TV. SYSTEM LEMO BRACKET		
MATERIAL	SCALE	TOLERANCES
AL. ALLOY.	1:1	X ± 0.2
FINISH	NO REQ. PER UNIT	XX
Z.1 ANODISE	1	XXX
D.A. No.	DRAWING No.	
V/FX/130.	R.G.O. W/FX/211	



TITLE: BRACKET. TV. FACED METHOD		
MATERIAL	SCALE	TOLERANCES
AL. ALLOY.	1:1	X ± 0.2
FINISH	NO REQ. PER UNIT	XX
	1.	XXX
D.A. No.	DRAWING No.	
V/FX/150	R.G.O. W/FX/212.	

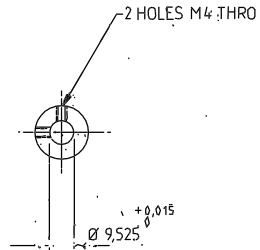
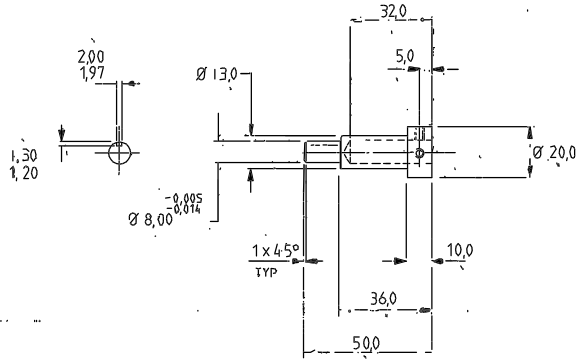


TITLE: ADJUSTER PLATE		
MATERIAL	SCALE	TOLERANCES
AL. ALLOY.	1:1	X ± 0.2
FINISH	NO REQ. PER UNIT	XX ± 0.05
	2	XXX
D.A. No.	DRAWING No.	
V/FX/150	R.G.O. W/FX/213	



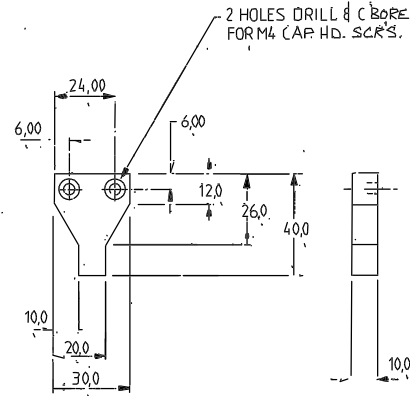
TITLE: FLAG.		
MATERIAL	SCALE	TOLERANCES
AL. ALLOY.	1:1	X ± 0.1
FINISH	NO REQ. PER UNIT	XX
	1	XXX
D.A. No.	DRAWING No.	
V/FX/150	R.G.O. W/FX/214	

Tolerances (Unless otherwise stated)				Material		Dimns in m.m.		Scale		THIRD ANGLE PROJECTION		G.A. No.	
ISSUE	Mod. No.	Date	Drawn By	ISSUE	Mod. No.	Date	Drawn By	Dwg. No.	No. Req.	ROYAL GREENWICH OBSERVATORY, HERSTMONCEUX CASTLE, HAILSHAM SUSSEX	12 TV. ACCT.		Drawing No.
											DETAILS		V/FX/211-214



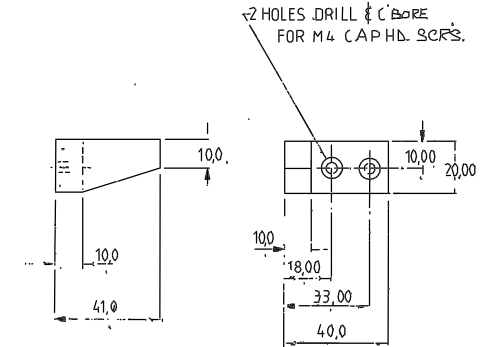
MIC ALL OVER - DEBURR.

56 BRAKE SPINDLE			
MATERIAL	SCALE	TOLERANCES	
STAINLESS STEEL	1:1	x	x ± 0.5
FINISH	NO REQ. PER UNIT	xxx	xxx ± 0.1
NATURAL	1		
G.A. No.	DRAWING No.		
V/FX/150	R.G.Q. W / FX / 206		



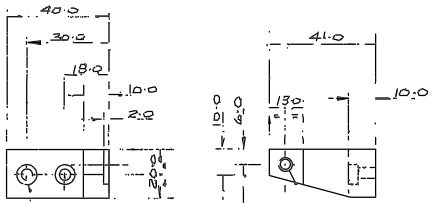
DEBURR

57 CENTRE STOP BLOCK			
MATERIAL	SCALE	TOLERANCES	
STAINLESS STEEL	1:1	x	x ± 0.5
FINISH	NO REQ. PER UNIT	xxx	xxx ± 0.1
BLK NICKEL PLT	1		
G.A. No.	DRAWING No.		
V/FX/150	R.G.Q. W / FX / 207		



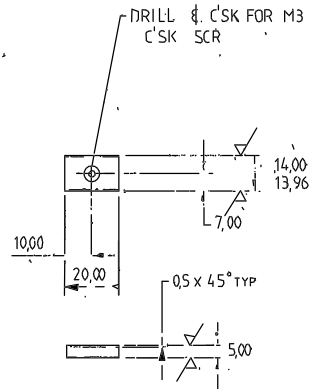
DEBURR

58 RIGHT HAND STOP BLOCK			
MATERIAL	SCALE	TOLERANCES	
ST. STL	1:1	x	x ± 0.5
FINISH	NO REQ. PER UNIT	xxx	xxx ± 0.1
BLK NICKEL PLT	1		
G.A. No.	DRAWING No.		
V/FX/150	R.G.Q. W / FX / 208		



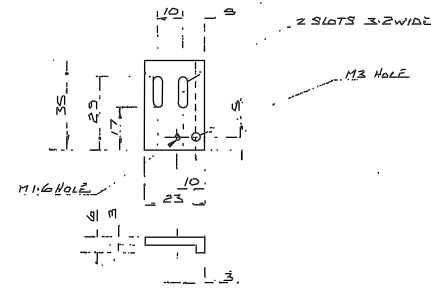
DEBURR

59 LEFT HAND STOP BLOCK			
MATERIAL	SCALE	TOLERANCES	
ST. STL	1:1	x	x ± 0.5
FINISH	NO REQ. PER UNIT	xxx	xxx ± 0.1
BLK NICKEL PLT	1		
G.A. No.	DRAWING No.		
V/FX/150	R.G.Q. W / FX / 209		



DEBURR

60 LENS KEY			
MATERIAL	SCALE	TOLERANCES	
MILD STL	1:1	x	x ± 0.5
FINISH	NO REQ. PER UNIT	xxx	xxx ± 0.1
BLK NICKEL PLT	1		
G.A. No.	DRAWING No.		
V/FX/150	R.G.Q. W / FX / 210		

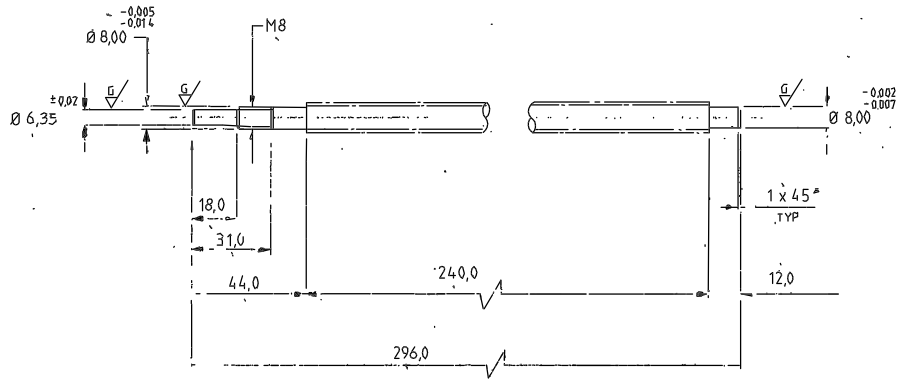


1 OFF AS DRAWN
2 OFF OPPOSITE HAND

61 ADJUST PLATE			
MATERIAL	SCALE	TOLERANCES	
AL. ALLOY	1:1	x	x ± 0.2
FINISH	NO REQ. PER UNIT	xxx	xxx
BL. NICKEL	SEE NOTE		
G.A. No.	DRAWING No.		
V/FX/150	R.G.Q. W / FX / 211		

Tolerances (Unless otherwise stated)				Material		Dimns in mm		State		THIRD ANGLE PROJECTION		Drawing No.	
x ±				Finish		ROYAL GREENWICH OBSERVATORY,		Title		DETAIL		206	
xx ±				Used on		HERSTMONCEUX CASTLE,						W / FX / 210 TO	
xxx ±						HAILSHAM		SUSSEX.					
Issued	Mod. No.	Date	Drawn By	Issue	Mod. No.	Date	Drawn By						
			JH/87	BTH									

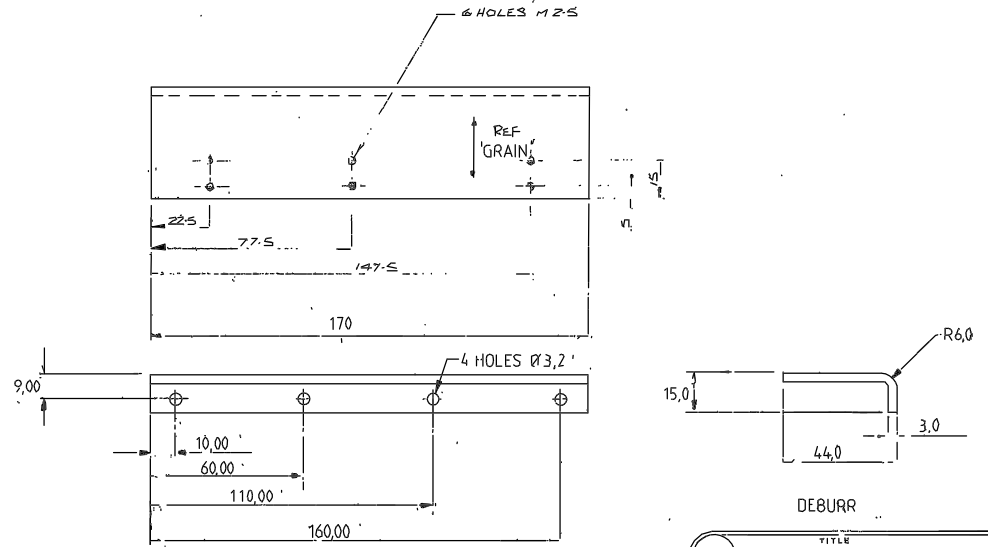
Drawing No. 201
W/FX/205.T0



MODIFY-UNIMATIC BALL SCREW
BRT-SF-12 x 4 x 296MM
REF ITEM 71

DEBURR

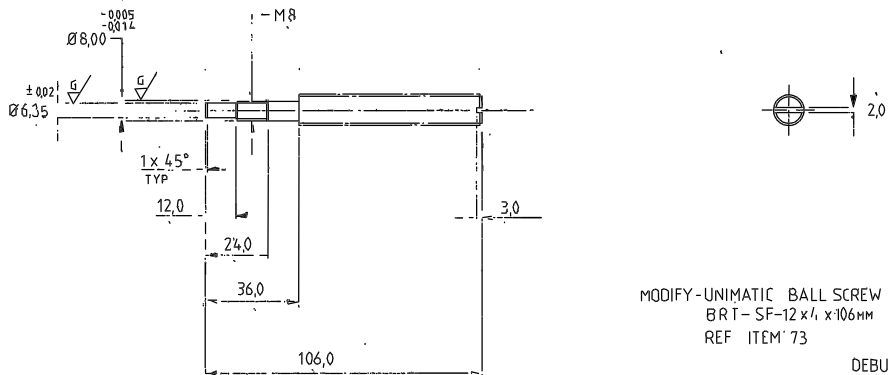
51 LEAD SCREW [DRG ONLY]		
MATERIAL	SCALE	TOLERANCES
SEE DRG	1:1	x ± 0,5
FINISH	NO REQ. PER UNIT	xxx ± 0,1
G.A. No.	DRAWING No.	
V/FX/150	R.G.O. W/FX/201	



DEBURR

53 HETTICH SWITCH BRKT		
MATERIAL	SCALE	TOLERANCES
ALUM ALLOY	1:1	x ± 0,5
FINISH	NO REQ. PER UNIT	xxx ± 0,1
MATT BLK ANODISE	1	xxx ± 0,1
G.A. No.	DRAWING No.	
V/FX/150	R.G.O. W/FX/203	

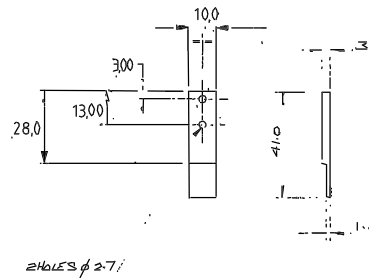
NOTE: CAN USE UNEQUAL ANGLE
1 3/4 x 3/4 x 1/8



MODIFY-UNIMATIC BALL SCREW
BRT-SF-12 x 4 x 106MM
REF ITEM 73

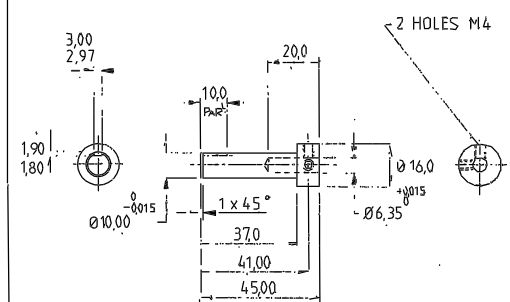
DEBURR

52 LEAD SCREW FLAG [DRG ONLY]		
MATERIAL	SCALE	TOLERANCES
SEE DRG	1:1	x ± 0,5
FINISH	NO REQ. PER UNIT	xxx ± 0,1
G.A. No.	DRAWING No.	
V/FX/150	R.G.O. W/FX/202	



DEBURR

54 SWITCH FLAG		
MATERIAL	SCALE	TOLERANCES
BRASS	1:1	x ± 0,5
FINISH	NO REQ. PER UNIT	xxx ± 0,1
BLK NICKEL PLT	1	xxx ± 0,1
G.A. No.	DRAWING No.	
V/FX/150	R.G.O. W/FX/204	

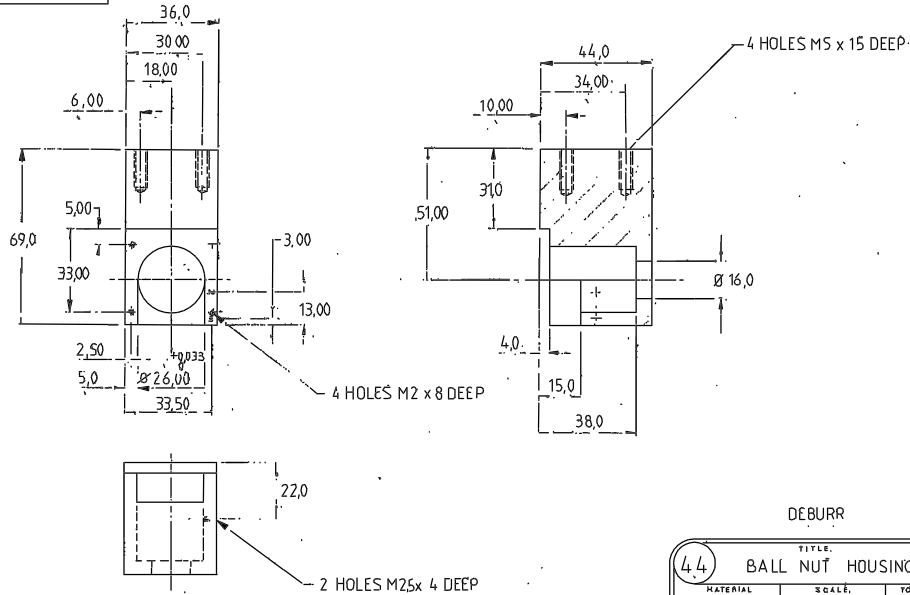


M/C ALL OVER - DEBURR

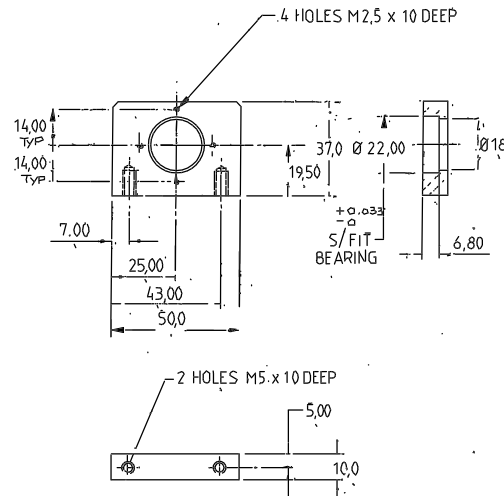
55 BRAKE SPINDLE		
MATERIAL	SCALE	TOLERANCES
ST STL	1:1	x ± 0,5
FINISH	NO REQ. PER UNIT	xxx ± 0,1
NATURAL	1	xxx ± 0,1
G.A. No.	DRAWING No.	
V/FX/150	R.G.O. W/FX/205	

Issue						Material						Dim in mm.		Scale		THIRD ANGLE PROJECTION		G.A. No.	
Issue	Mod. No.	Date	Drawn By	Issue	Mod. No.	Date	Drawn By	Material	Finish	Dim in mm.	Scale	Dim	Title	THIRD ANGLE PROJECTION	G.A. No.	Drawing No.	201 W/FX/205.T0		
													DETAIL						

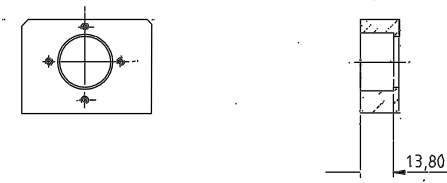
Drawing No. 194 TO
W/FX/200.



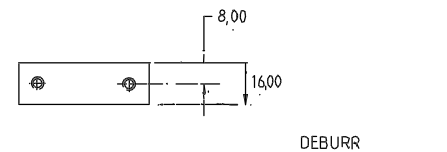
TITLE		
44 BALL NUT HOUSING		
MATERIAL	SCALE	TOLERANCES
ALUM ALLOY	1:1	X XX ± 0,5 XXX ± 0,1
FINISH	No REQ. PER UNIT	
MATT BLK ANODISE	1	
G.A. No.	DRAWING No.	
W/FX/150	R.G.O. W/FX/194	



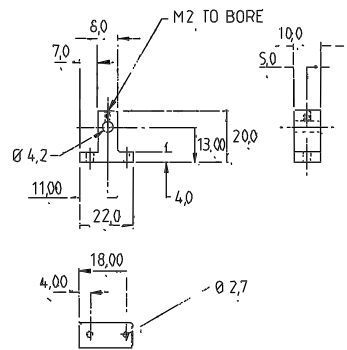
TITLE		
47 BEARING HOUSING		
MATERIAL	SCALE	TOLERANCES
ALUM ALLOY	1:1	X XX ± 0,5 XXX ± 0,1
FINISH	No REQ. PER UNIT	
MATT BLK ANODISE	1	
G.A. No.	DRAWING No.	
W/FX/150	R.G.O. W/FX/197	



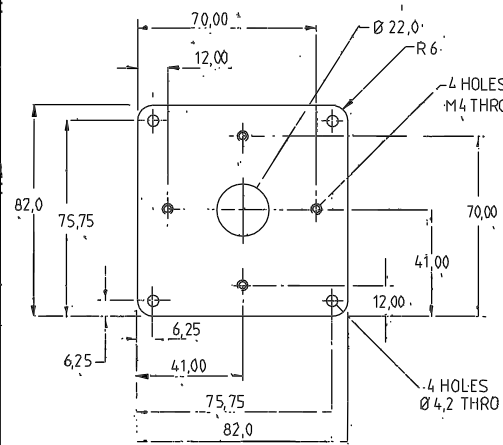
NOTE: ALL OTHER DIMENSIONS AS BEARING HOUSING ITEM 47 DRG No W/FX/197



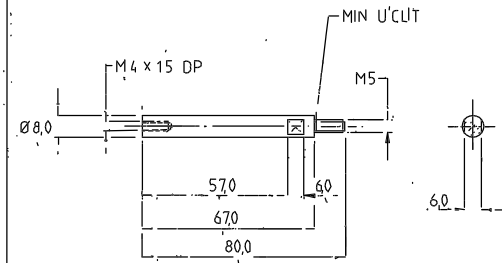
TITLE		
49 BEARING HOUSING		
MATERIAL	SCALE	TOLERANCES
ALUM ALLOY	1:1	X XX ± 0,5 XXX ± 0,1
FINISH	No REQ. PER UNIT	
MATT BLK ANODISE	1	
G.A. No.	DRAWING No.	
W/FX/150	R.G.O. W/FX/199	



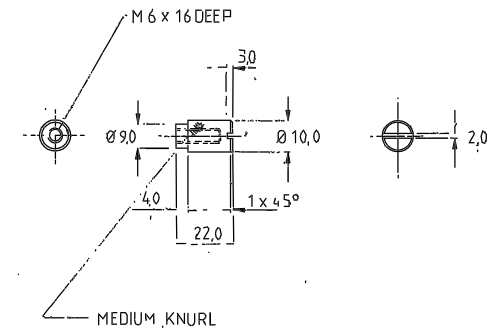
TITLE		
45 PROXIMITY SWITCH BRKT		
MATERIAL	SCALE	TOLERANCES
BRASS	1:1	X XX ± 0,5 XXX ± 0,1
FINISH	No REQ. PER UNIT	
BLK NICKEL PLT	1	
G.A. No.	DRAWING No.	
W/FX/150	R.G.O. W/FX/195	



TITLE		
46 BRAKE MOUNTING PLT.		
MATERIAL	SCALE	TOLERANCES
MILD STL	1:1	X XX ± 0,5 XXX ± 0,1
FINISH	No REQ. PER UNIT	
BLK NICKEL PLT	1	
G.A. No.	DRAWING No.	
W/FX/150	R.G.O. W/FX/196	



TITLE		
48 TIE ROD		
MATERIAL	SCALE	TOLERANCES
MILD STL	1:1	X XX ± 0,5 XXX ± 0,1
FINISH	No REQ. PER UNIT	
BLK NICKEL PLT	4	
G.A. No.	DRAWING No.	
W/FX/150	R.G.O. W/FX/198	



TITLE		
50 THUMB NUT		
MATERIAL	SCALE	TOLERANCES
BRASS	1:1	X XX ± 0,5 XXX ± 0,1
FINISH	No REQ. PER UNIT	
BLK NICKEL PLT	2	
G.A. No.	DRAWING No.	
W/FX/150	R.G.O. W/FX/200	

Issued		Mod. No.		Date		Drawn by		Issue		Mod. No.		Date		Drawn by	

Tolerances (Unless otherwise stated)		
X	±	
XX	±	
XXX	±	

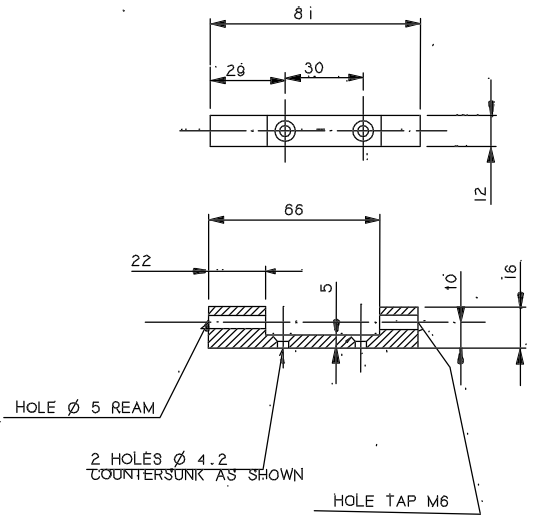
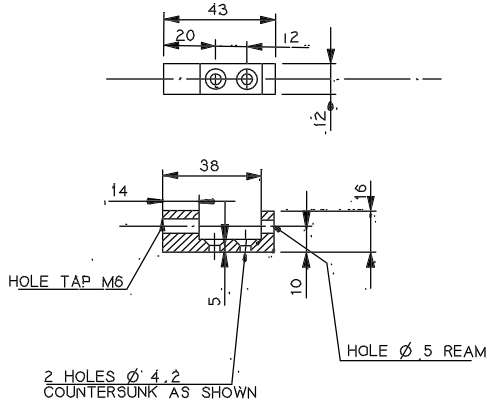
Material	
Finish	

Dimns in m.m.		Scale	
Drp. No.	No. Req.		
Used on			

THIRD ANGLE PROJECTION		Title	

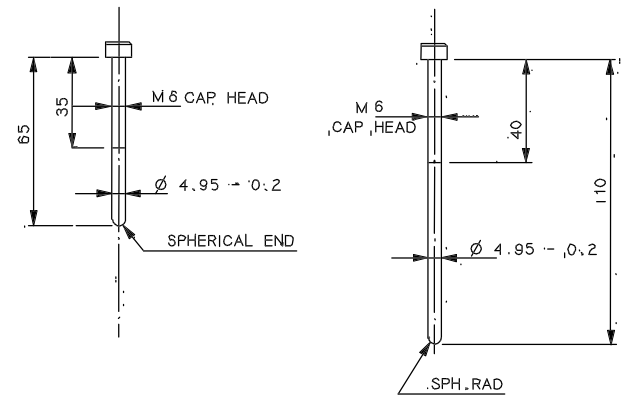
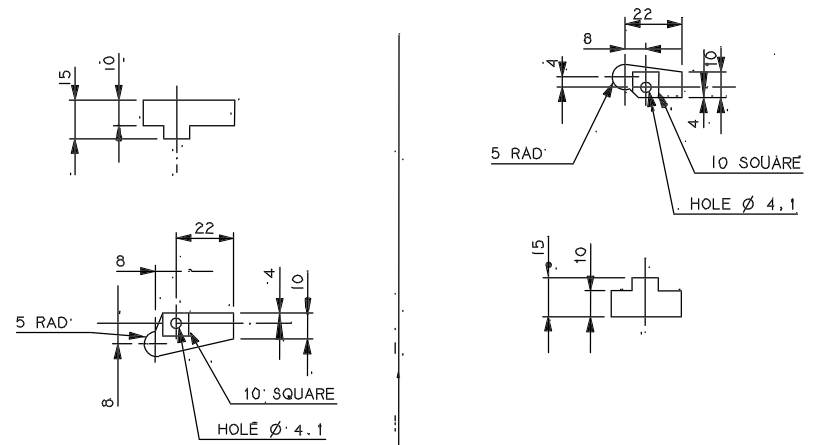
G.A. No.	
Drawing No.	194 TO
	W/FX/200 TO

Drawing No. FX/192/1-2
 W FX/193
 FX/200



42		TITLE		DISC REF.	
BLOCK A					
MATERIAL	SCALE	TOLERANCES ±			
BRASS	1:1	0.2			
FINISH	No. REQ. PER UNIT	X .X			
BL. NICKEL	1	X.XX			
S.A. No.	DRAWING No.				
W/FX/150	RGD W/FX/192/1				

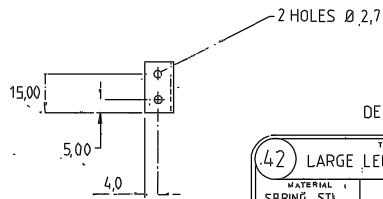
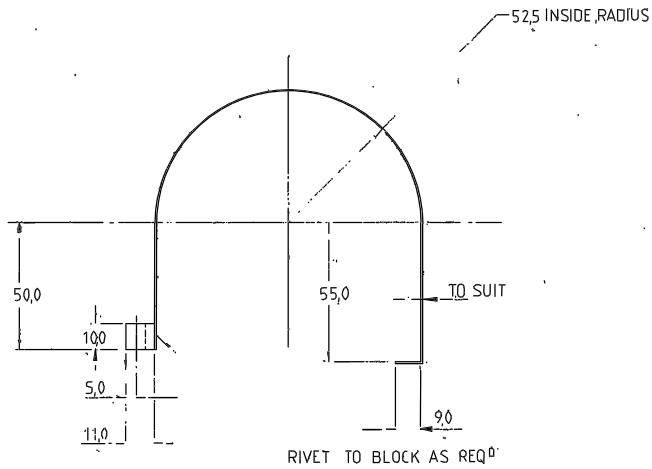
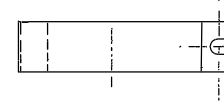
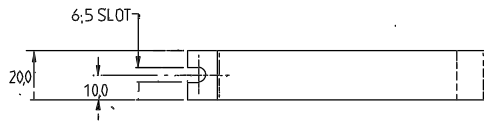
42		TITLE		DISC REF.	
BLOCK B					
MATERIAL	SCALE	TOLERANCES ±			
BRASS	1:1	0.2			
FINISH	No. REQ. PER UNIT	X .X			
BL. NICKEL	1	X.XX			
S.A. No.	DRAWING No.				
W/FX/150	RGD W/FX/192/2				



43		TITLE		DISC REF.	
LEVERS					
MATERIAL	SCALE	TOLERANCES ±			
BRASS	1:1	0.2			
FINISH	No. REQ. PER UNIT	X .X			
BL. NICKEL	1 OFF EACH	X.XX			
S.A. No.	DRAWING No.				
W/FX/150	RGD W/FX/193				

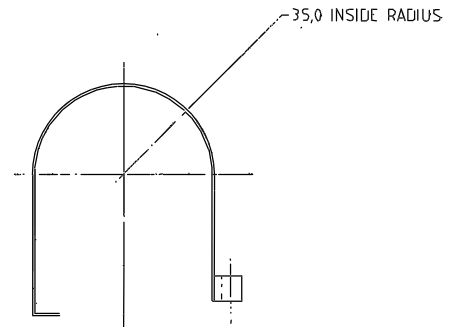
50		TITLE		DISC REF.	
SCREWS					
MATERIAL	SCALE	TOLERANCES ±			
ST. STEEL	1:1	0.2			
FINISH	No. REQ. PER UNIT	X .X			
BLACK	1 OFF EACH	X.XX			
S.A. No.	DRAWING No.				
W/FX/150	RGD W/FX/200				

<table border="1"> <tr> <td>Issue</td> <td>Mod No</td> <td>Date</td> <td>Drawn by</td> </tr> <tr> <td></td> <td></td> <td></td> <td></td> </tr> </table>				Issue	Mod No	Date	Drawn by					<table border="1"> <tr> <td>Nov 88</td> <td>BTH</td> <td></td> <td></td> </tr> <tr> <td></td> <td></td> <td></td> <td></td> </tr> </table>				Nov 88	BTH							<table border="1"> <tr> <td>Tolerance (Unless otherwise stated)</td> <td></td> </tr> <tr> <td>X +/-</td> <td></td> </tr> <tr> <td>X.X +/-</td> <td></td> </tr> <tr> <td>X.XX +/-</td> <td></td> </tr> </table>		Tolerance (Unless otherwise stated)		X +/-		X.X +/-		X.XX +/-		<table border="1"> <tr> <td>Material</td> <td></td> </tr> <tr> <td>Finish</td> <td></td> </tr> </table>		Material		Finish		<table border="1"> <tr> <td>Dimns. In m.m.</td> <td>Scale</td> </tr> <tr> <td>ROYAL GREENWICH OBSERVATORY</td> <td></td> </tr> <tr> <td>HERSTMONGEUX CASTLE</td> <td></td> </tr> <tr> <td>HAILSHAM SUSSEX</td> <td></td> </tr> </table>		Dimns. In m.m.	Scale	ROYAL GREENWICH OBSERVATORY		HERSTMONGEUX CASTLE		HAILSHAM SUSSEX		<table border="1"> <tr> <td colspan="2">THIRD ANGLE PROJECTION</td> </tr> <tr> <td colspan="2">.4.2M A&G TV SYSTEM</td> </tr> <tr> <td colspan="2">Title</td> </tr> <tr> <td colspan="2">FOCAL REDUCING MOUNT MODS</td> </tr> </table>		THIRD ANGLE PROJECTION		.4.2M A&G TV SYSTEM		Title		FOCAL REDUCING MOUNT MODS		<table border="1"> <tr> <td>GA No.</td> <td></td> </tr> <tr> <td>Drawing No.</td> <td>FX/192/1-2</td> </tr> <tr> <td>W.</td> <td>FX/193</td> </tr> <tr> <td></td> <td>FX/200</td> </tr> </table>		GA No.		Drawing No.	FX/192/1-2	W.	FX/193		FX/200
Issue	Mod No	Date	Drawn by																																																																		
Nov 88	BTH																																																																				
Tolerance (Unless otherwise stated)																																																																					
X +/-																																																																					
X.X +/-																																																																					
X.XX +/-																																																																					
Material																																																																					
Finish																																																																					
Dimns. In m.m.	Scale																																																																				
ROYAL GREENWICH OBSERVATORY																																																																					
HERSTMONGEUX CASTLE																																																																					
HAILSHAM SUSSEX																																																																					
THIRD ANGLE PROJECTION																																																																					
.4.2M A&G TV SYSTEM																																																																					
Title																																																																					
FOCAL REDUCING MOUNT MODS																																																																					
GA No.																																																																					
Drawing No.	FX/192/1-2																																																																				
W.	FX/193																																																																				
	FX/200																																																																				



DEBURR

TITLE		
42 LARGE LENS STRAP		
MATERIAL	SCALE	TOLERANCES
SPRING STL	1:1	%
FINISH	NO REQ. PER UNIT	XX ± 0,5
	2	XXX ± 0,1
D.A. No.	DRAWING No.	
W/FX/150	R.G.O. W/FX/192	



ALL OTHER DIMENSIONS AS LARGE LENS STRAP
ITEM 42 DRG N° W/FX/192

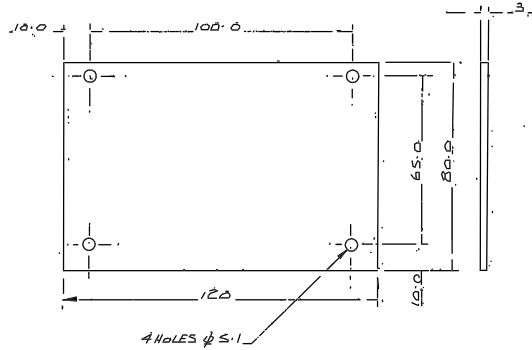


DEBURR

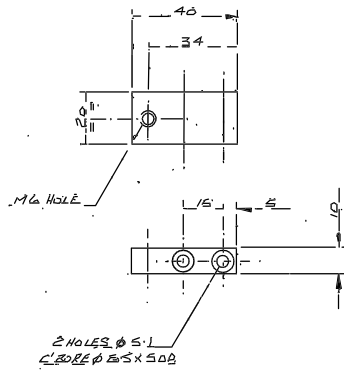
TITLE		
43 SMALL LENS STRAP		
MATERIAL	SCALE	TOLERANCES
SPRING STL	1:1	%
FINISH	NO REQ. PER UNIT	XX ± 0,5
	2	XXX ± 0,1
D.A. No.	DRAWING No.	
W/FX/150	R.G.O. W/FX/193	

Issue		Mod. No.		Date		Drawn By		Issued By		Date		Drawn By		Material		Dimms in m.m.		Scale		THIRD ANGLE PROJECTION		Title		D.A. No.																																			
																						DETAIL		192 W/FX/193																																			
<table border="0"> <tr> <td colspan="2">Tolerances (Unless otherwise stated)</td> <td colspan="2">Material</td> <td colspan="2">Dimms in m.m.</td> <td colspan="2">Scale</td> <td colspan="2">THIRD ANGLE PROJECTION</td> <td colspan="2">Title</td> <td colspan="2">D.A. No.</td> </tr> <tr> <td>X ±</td> <td>XX ±</td> <td>XXX ±</td> <td>Finish</td> <td>Drp. No.</td> <td>No. Req.</td> <td colspan="2">ROYAL GREENWICH OBSERVATORY, HERSTMONCEUX CASTLE, HAILSHAM</td> <td colspan="2">SUSSEX.</td> <td colspan="2">DETAIL</td> <td colspan="2">192 W/FX/193</td> </tr> <tr> <td>XXX ±</td> <td></td> <td></td> <td></td> <td>Used on</td> <td></td> <td colspan="2"></td> <td colspan="2"></td> <td colspan="2"></td> <td colspan="2"></td> </tr> </table>														Tolerances (Unless otherwise stated)		Material		Dimms in m.m.		Scale		THIRD ANGLE PROJECTION		Title		D.A. No.		X ±	XX ±	XXX ±	Finish	Drp. No.	No. Req.	ROYAL GREENWICH OBSERVATORY, HERSTMONCEUX CASTLE, HAILSHAM		SUSSEX.		DETAIL		192 W/FX/193		XXX ±				Used on													
Tolerances (Unless otherwise stated)		Material		Dimms in m.m.		Scale		THIRD ANGLE PROJECTION		Title		D.A. No.																																															
X ±	XX ±	XXX ±	Finish	Drp. No.	No. Req.	ROYAL GREENWICH OBSERVATORY, HERSTMONCEUX CASTLE, HAILSHAM		SUSSEX.		DETAIL		192 W/FX/193																																															
XXX ±				Used on																																																							

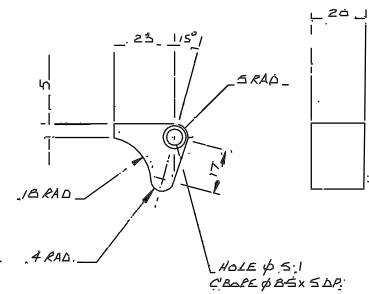
Drawing No. FX/191
W/ FX/215-218



41			TITLE: PLATE		
MATERIAL	SCALE	TOLERANCES			
AL. ALLOY	1:1	X. ± 0.2			
FINISH	NO REQ. PER UNIT	XX ± 0.1			
BL. ANODISE	1	XXX			
G.A. No.	DRAWING No.				
V/FX/150	R.G.O. W/FX/191				

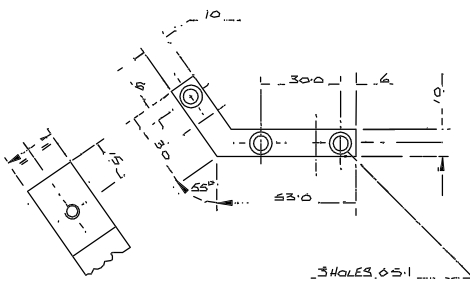
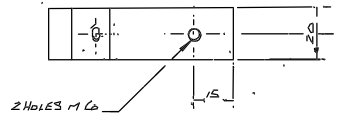


65			TITLE: ADJUSTER PLATE A		
MATERIAL	SCALE	TOLERANCES			
AL. ALLOY	1:1	X. ± 0.2			
FINISH	NO REQ. PER UNIT	XX ± 0.1			
BL. ANODISE	2	XXX			
G.A. No.	DRAWING No.				
V/FX/150	R.G.O. W/FX/215				

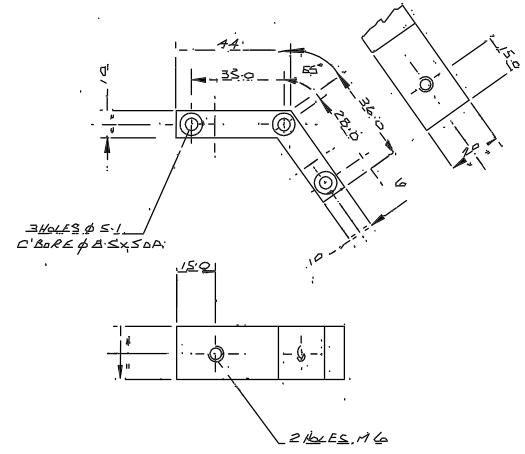


NOTE: 1 OFF AS DRAWN
1 OFF OPPOSITE HAND

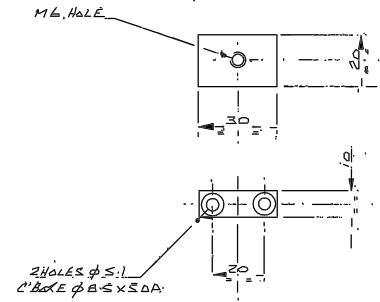
66			TITLE: LEVER		
MATERIAL	SCALE	TOLERANCES			
AL. ALLOY	1:1	X.			
FINISH	NO REQ. PER UNIT	XX			
BL. ANODISE	SEE NOTE	XXX			
G.A. No.	DRAWING No.				
V/FX/150	R.G.O. W/FX/216				



67			TITLE: ADJUSTER PLATE B		
MATERIAL	SCALE	TOLERANCES			
AL. ALLOY	1:1	X. ± 0.2			
FINISH	NO REQ. PER UNIT	XX			
BL. ANODISE	1	XXX			
G.A. No.	DRAWING No.				
V/FX/150	R.G.O. W/FX/217				



68			TITLE: ADJUSTER PLATE C		
MATERIAL	SCALE	TOLERANCES			
AL. ALLOY	1:1	X. ± 0.2			
FINISH	NO REQ. PER UNIT	XX			
BL. ANODISE	1	XXX			
G.A. No.	DRAWING No.				
V/FX/150	R.G.O. W/FX/218				



69			TITLE: ADJUSTER PLATE D		
MATERIAL	SCALE	TOLERANCES			
AL. ALLOY	1:1	X. ± 0.2			
FINISH	NO REQ. PER UNIT	XX			
BL. ANODISE	2	XXX			
G.A. No.	DRAWING No.				
V/FX/150	R.G.O. W/FX/219				

Issue	Mod. No.	Date	Drawn By	Issue	Mod. No.	Date	Drawn By
			SCOTT BTH				

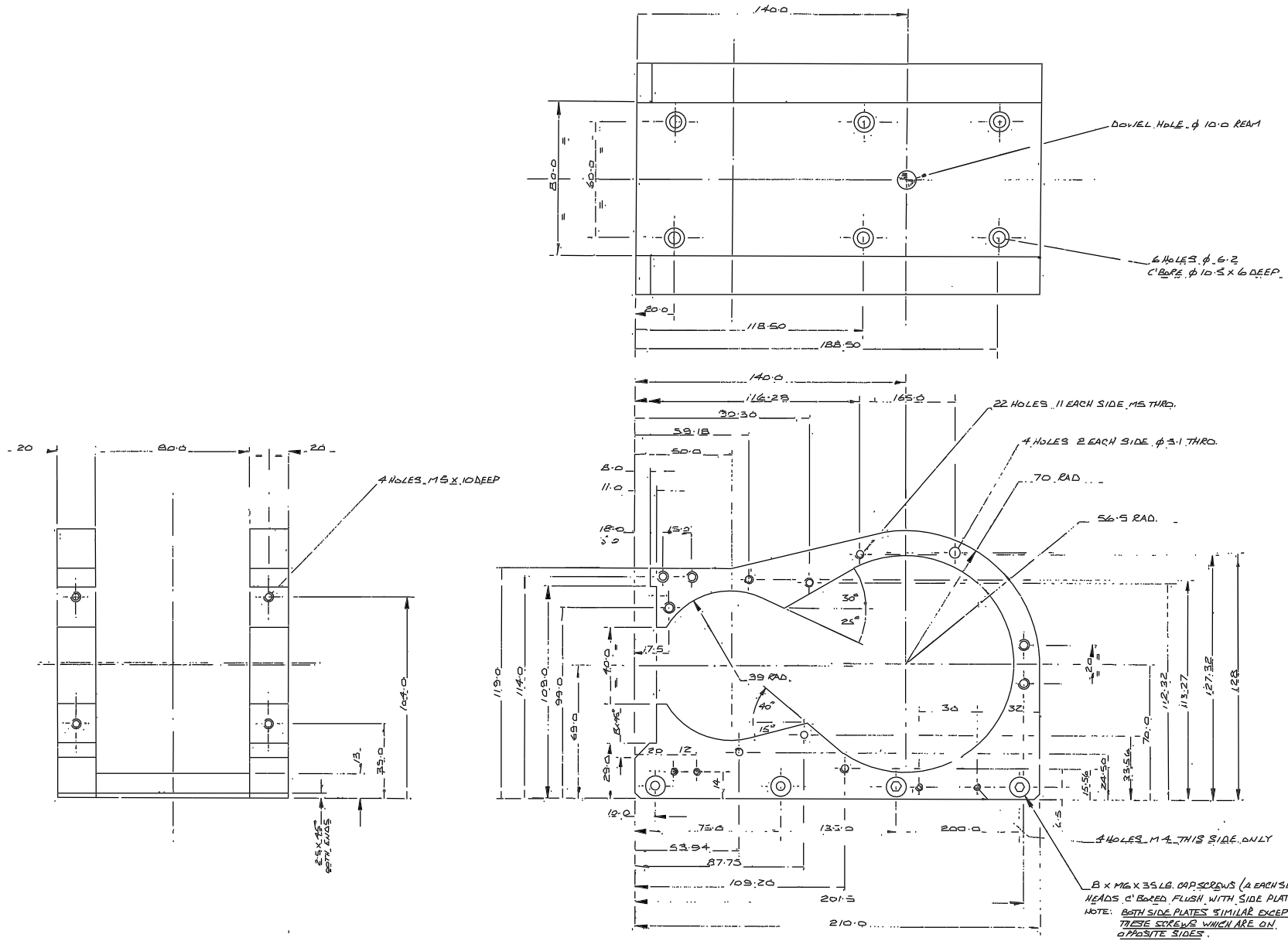
Tolerances (Unless otherwise stated)
X. ±
XX ±
XXX ±

Material	Dimns in m.m.	Scale
Finish	Drw. No.	No. Req
	Used on	

ROYAL GREENWICH OBSERVATORY,
HERSTMONCEUX CASTLE,
HAILSHAM
SUSSEX.

THIRD ANGLE PROJECTION
1-2 A & C CASE I T.V. & R.P. SYSTEM.
DETAILS

G.A. No.
Drawing No.
W/ FX/191
FX/215-218



Issue	Mod. No.	Date	Drawn By	Issue	Mod. No.	Date	Drawn By

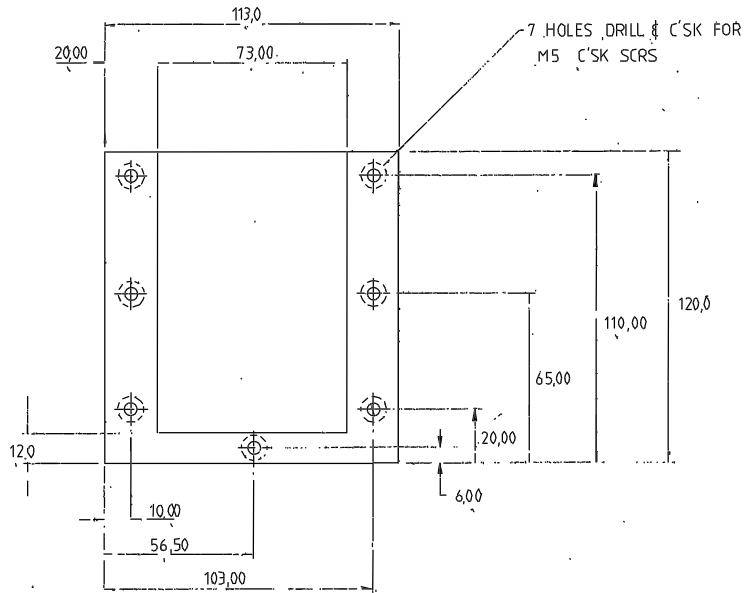
Tolerances (unless otherwise stated)
 X ± 0.2
 XX ± 0.1
 XXX ± 0.05

Material
 AL. ALLOY
 Finish
 BL. ANODISE

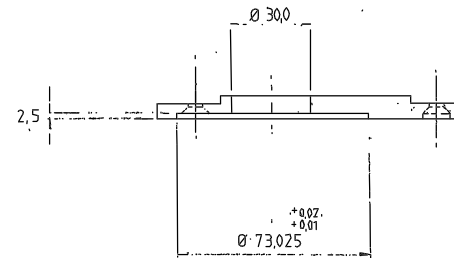
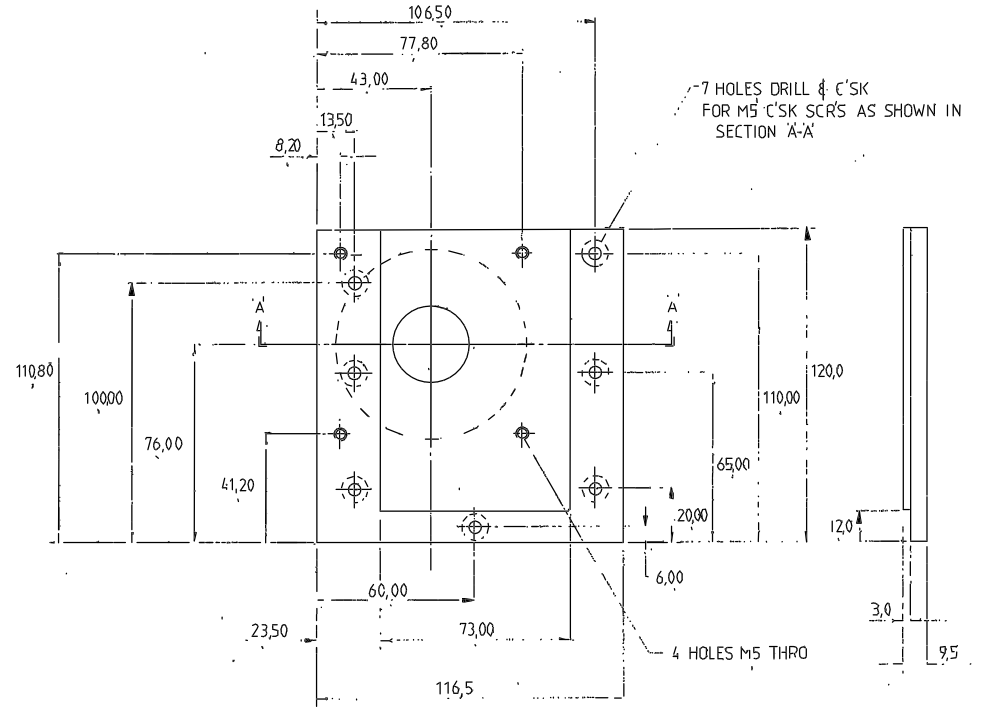
Divided in m.m. Scale 1:1
 ROYAL GREENWICH OBSERVATORY,
 HERSTMONCEUX CASTLE,
 HAILSHAM SUSSEX.

THIRD ANGLE PROJECTION
 4.21 A-G CASE I
 LENS MOUNT

G.A. No. W/FX/190
 Drawing No.
 W/FX/190.



2,50
(3/8 STK)



DEBURR

38 RIGHT HAND END PLATE			
MATERIAL	SCALE	TOLERANCES	
ALCOA PLATE	1:1	x	± 0,5
FINISH	NO REQ. PER UNIT	xx	± 0,1
MATT BLK ANODISE	1	xxx	± 0,1
G.A. No.	DRAWING No.		
R.G.O. W/FX/188	R.G.O. W/FX/188		

DEBURR

39 LEFT HAND END PLATE			
MATERIAL	SCALE	TOLERANCES	
M. STL	1:1	x	± 0,5
FINISH	NO REQ. PER UNIT	xx	± 0,1
BLK NICKEL PLY	1	xxx	± 0,1
G.A. No.	DRAWING No.		
W/FX/189	R.G.O. W/FX/189		

Issue	Mod. No.	Date	Drawn By	Issue	Mod. No.	Date	Drawn By
			ANS7	BTH			

Tolerances (Unless otherwise stated)
x ±
xx ±
xxx ±

Material	Finish

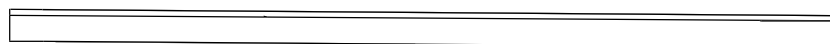
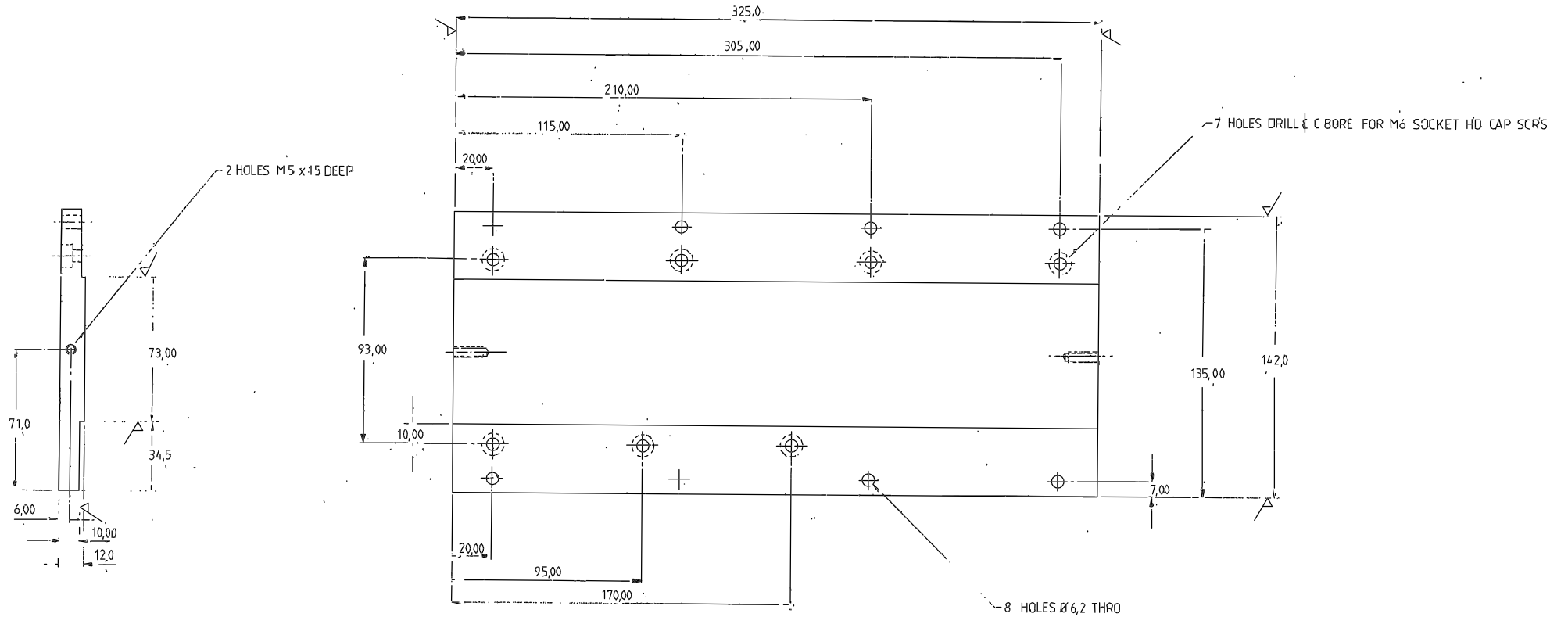
Dimms in m.m.	Scale
ROYAL GREENWICH OBSERVATORY, HERSTMONCEUX, CASTLE, HAILSHAM SUSSEX.	

THIRD ANGLE PROJECTION		Title	Drawing No.
		DETAIL	188
			W/FX/189

Drawing No.	188
W/FX/189	

Drawing No.

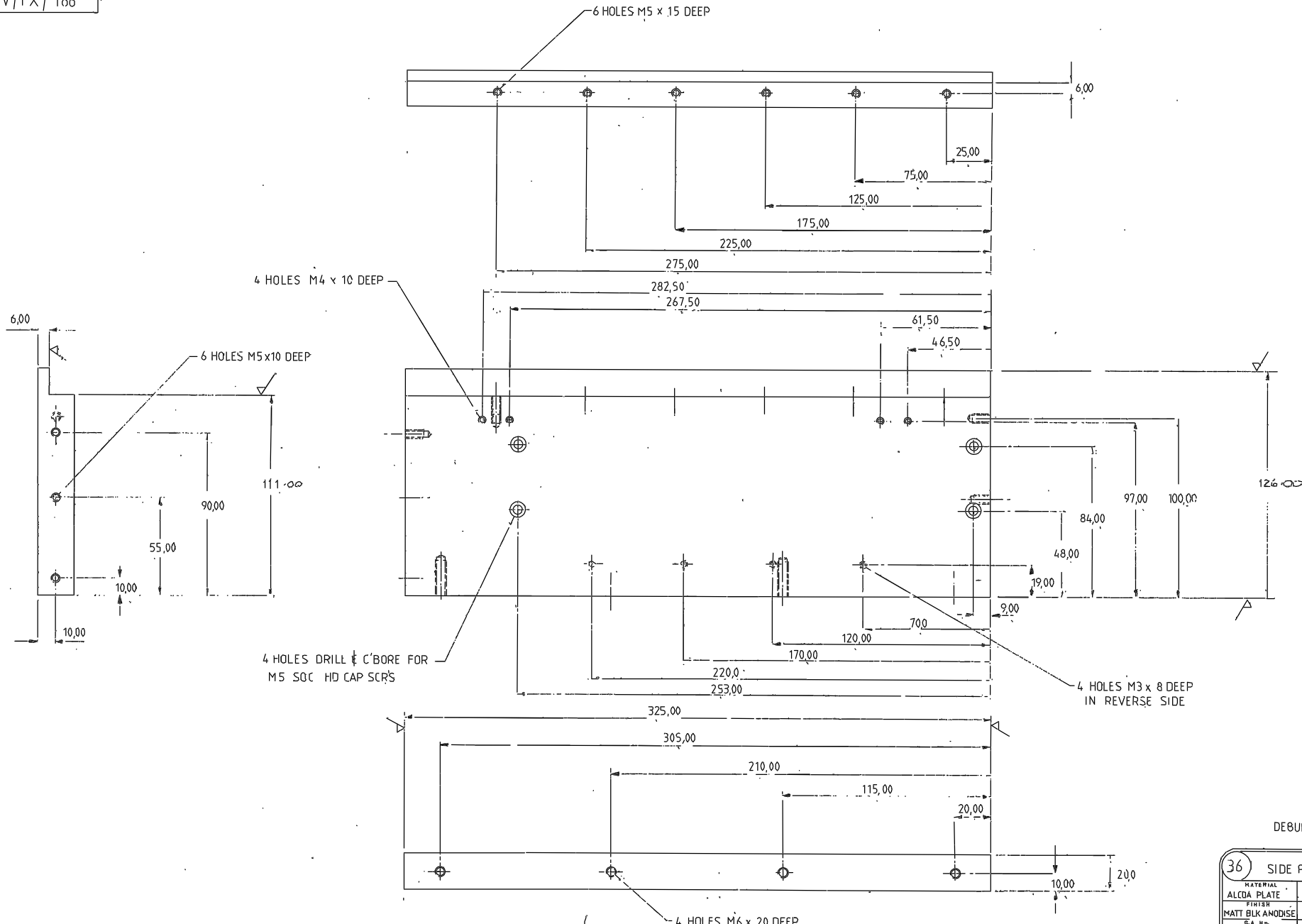
W/FX/187



DEBURR

37		BASE PLATE	
MATERIAL	SCALE	TOLERANCES	
ALCOA PLATE	1:1	x	x ± 0.5
FINISH	NO REG PER UNIT	XXX ± 0.1	
MATT BLK ANODISE	1		
G.A. No.	DRAWING No.		
W/FX/187	R.G.O. W/FX/187		

								Tolerances (Unless otherwise stated)	Material	Dimms in m.m.	Scale	THIRD ANGLE PROJECTION	G.A. No.
Issue	Mod. No.	Date	Drawn By	Issue	Mod. No.	Date	Drawn By	X ± XX ± XXX ±	Finish	Org. No	No. Req.	ROYAL GREENWICH OBSERVATORY, HERSTMONGEUX, CASTLE, HAILSHAM SUSSEX.	This
										Used on			DETAIL
													Drawing No.
													W/FX/187



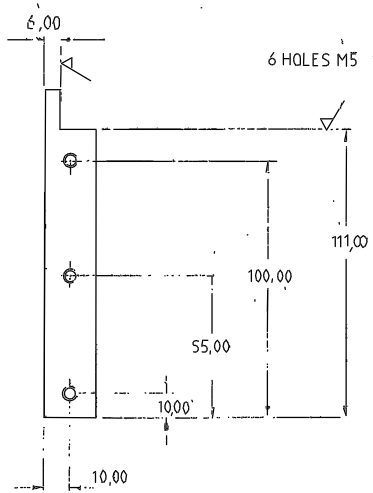
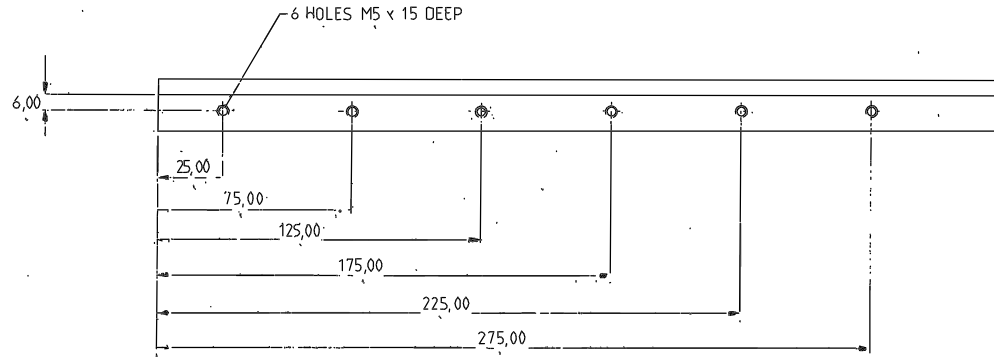
DEBURR

36			TITLE		
SIDE PLATE [FRONT]					
MATERIAL	SCALE	TOLERANCES			
ALCOA PLATE	1:1	%			
FINISH	NO REQ. PER UNIT	XX ± 0.5			
MATT BLK ANODISE	1	XX ± 0.1			
G.A. No.	DRAWING No.				
W/FX/186	R.G.O. W/FX/186				

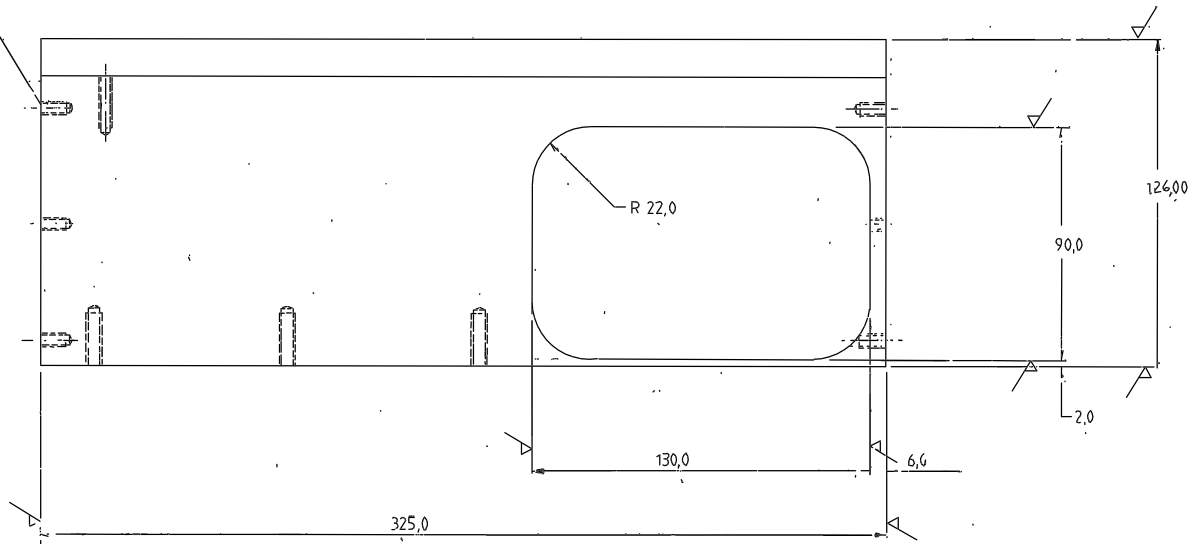
Issue		Date		Drawn By		Issue		Date		Drawn By		Material		Dimms in m.m.		Scale		THIRD ANGLE PROJECTION		Title		G.A. No.	
3		2		APL 87		STH		3		2		APL 87		STH		ROYAL GREENWICH OBSERVATORY, HERSTMONCEUX CASTLE, HAILSHAM		1:1		DETAIL		W/FX/186	
Tolerances (Unless otherwise stated)		X ±		XX ±		XXX ±		Material		Finish		Org. No.		No. Req.		Used on		G.A. No.		Drawing No.		W/FX/186	

Drawing No.

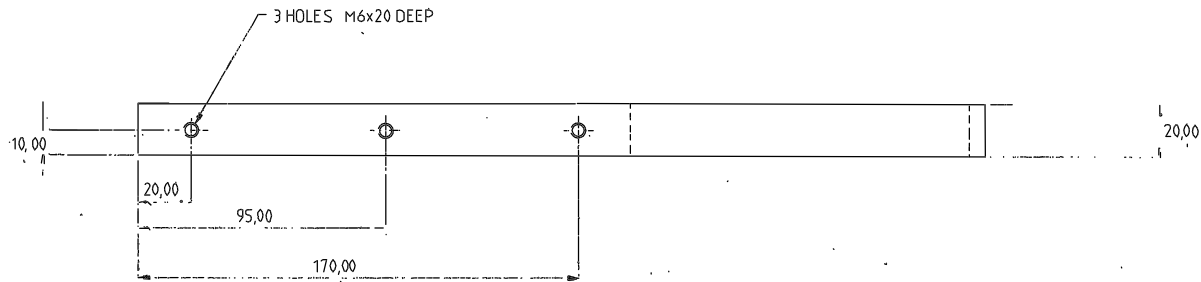
W/FX/185



6 HOLES M5 10 DEEP



3 HOLES M6x20 DEEP



DEBURR

35 SIDE PLATE [BACK]		
MATERIAL	SCALE	TOLERANCES
ALCOA PLATE	1:1	X ± 0.5
FINISH	NO REQS PER UNIT	X.X ± 0.1
MATT BLK ANODISE	1	X.X ± 0.1
G.A. No.	DRAWING No.	
W/FX/185	R.G.O. W/FX/185	

Issue	Mod. No.	Date	Drawn By	Issue	Mod. No.	Date	Drawn By
			3	2	AP/SJ	ETH	JAN 87
							ETH

Tolerances (Unless otherwise stated)
 X ± 1
 XX ± 1
 XXX ± 1

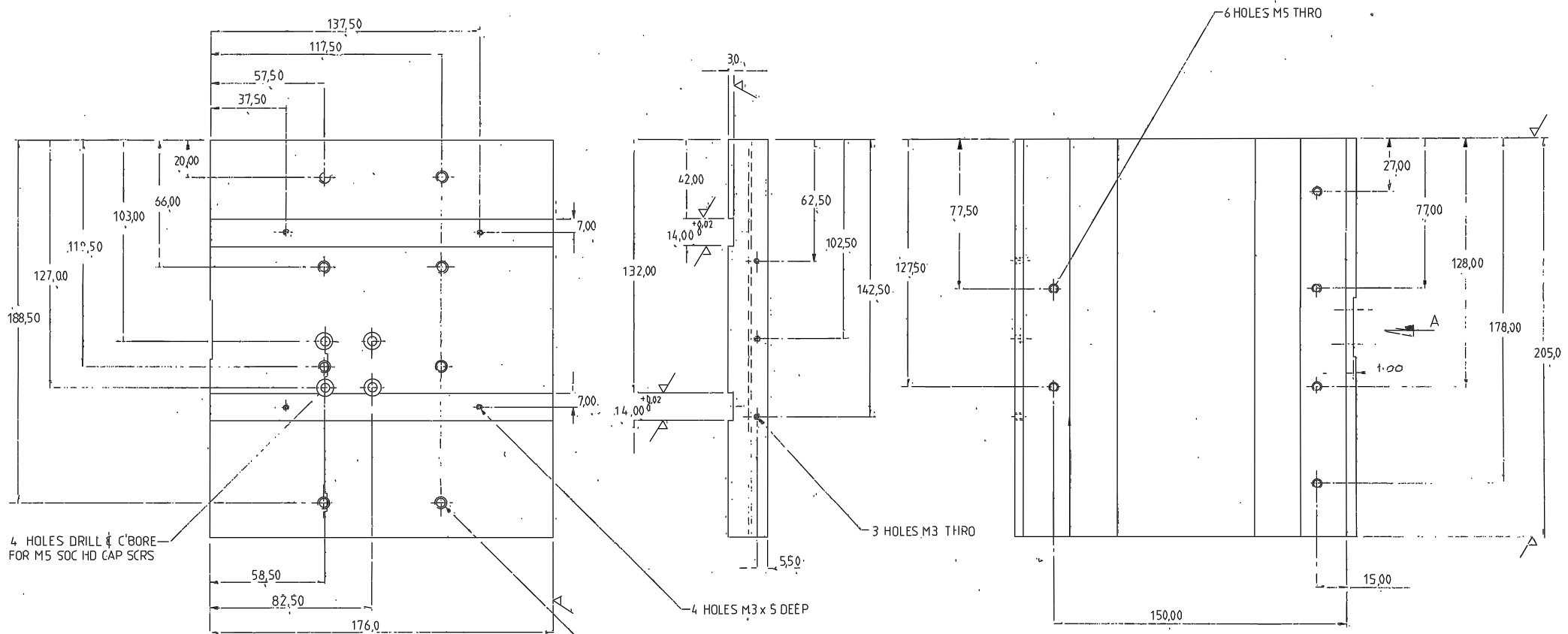
Material	Dimns in m.m.	Scale
Finish	.Dig. No.	No. Req.
	Used on	

ROYAL GREENWICH OBSERVATORY,
 HERSTMONCEUX CASTLE,
 HAILSHAM
 SUSSEX.

THIRD ANGLE PROJECTION

DETAIL

G.A. No.
 Drawing No.
 W/FX/185



4 HOLES DRILL & C'BORE FOR M5 SOC HD CAP SCRS

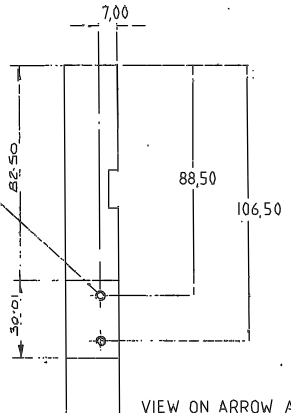
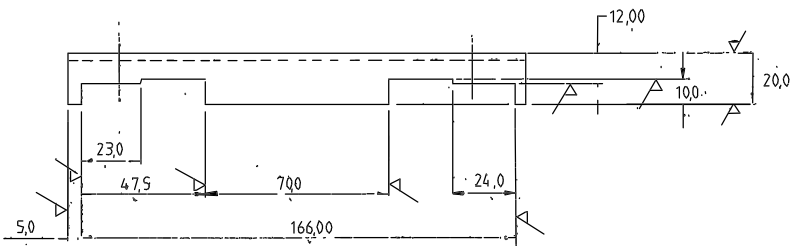
3 HOLES M3 THRO

4 HOLES M3 x 5 DEEP

8 HOLES M6 THRO

2 HOLES M4 x 10 DEEP

6 HOLES M5 THRO

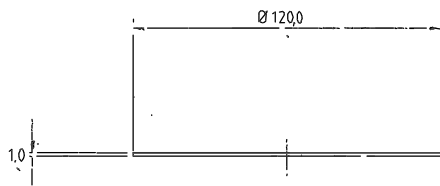
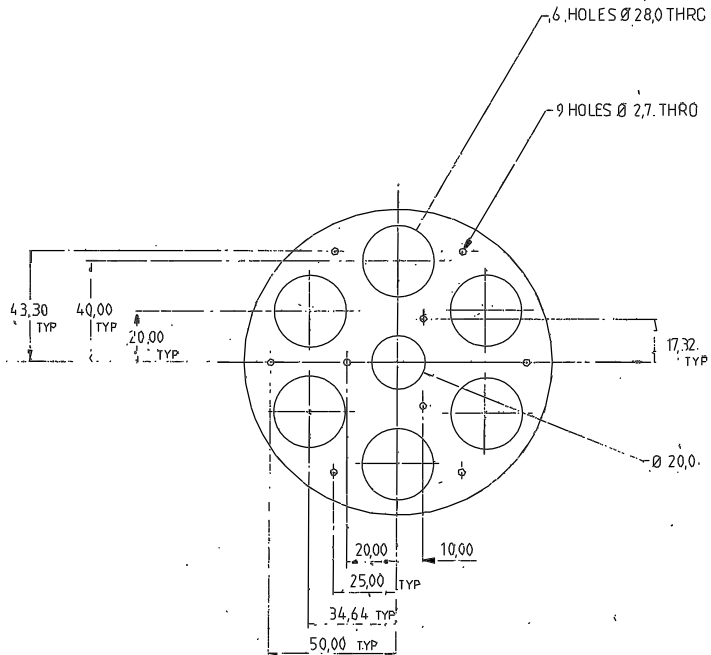


DEBURR

34 LENS CARRIAGE			
MATERIAL	SCALE	TOLERANCES	
ALUM. ALLOY	1:1	X	± 0,5
FINISH	NO REQD PER UNIT	XX	± 0,1
MATT BLK ANODISE	1	XXX	± 0,1
D.W. No.	DRAWING No.		
W/FX/150	R.G.O. W/FX/184		

				Tolerances (unless otherwise stated)		Material		Drawings in m.m.		Scale		THIRD ANGLE PROJECTION		Title		G.A. No.	
				X ±				ROYAL GREENWICH OBSERVATORY,				DETAIL		Drawing No.			
				XX ±				HERSTMONCEUX CASTLE,						W/FX/184			
				XXX ±				HAILSHAM									
Issue	Mod. No.	Date	Drawn By	Issue	Mod. No.	Date	Drawn By	Drw. No.	Na. Req.	Used on -							

Drawing No. 179
W/FX | 183 TO



DEBURR

TITLE		
29 FILTER WHEEL PLT		
MATERIAL	SCALE	TOLERANCES
ALUM. ALLOY	1:1	X
FINISH	NO REQ. PER UNIT	XX ± 0,5
MATT BLK ANODISE	1	XXX ± 0,1
G.A. No.	DRAWING No.	
V/FX/150	R.G.O. W/FX/179	

Issue	Mod. No.	Date	Drawn By	Issue	Mod. No.	Date	Drawn By

Tolerances (Unless otherwise stated)
X ±
XX ±
XXX ±

Material

Finish

Dim's in mm. Scale

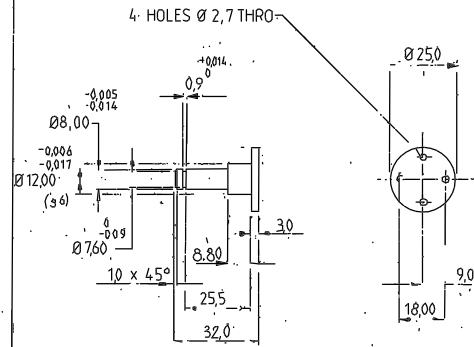
ROYAL GREENWICH OBSERVATORY,
HERSTMONCEUX CASTLE,
HAILSHAM SUSSEX.

Title

DETAIL

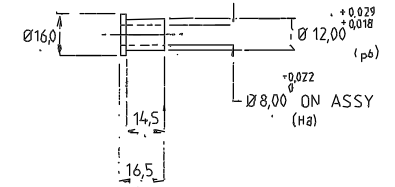
THIRD ANGLE PROJECTION

G.A. No. Drawing No. 179
W/FX/183 TO



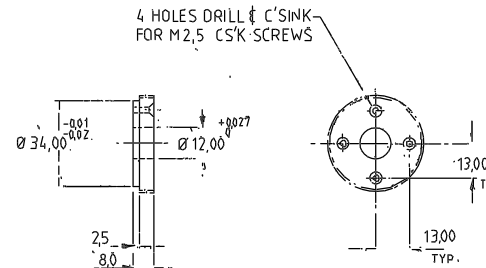
DEBURR

TITLE		
30 SPINDLE		
MATERIAL	SCALE	TOLERANCES
ST STL	1:1	X
FINISH	NO REQ. PER UNIT	XX ± 0,5
NATURAL	1	XXX ± 0,1
G.A. No.	DRAWING No.	
V/FX/150	R.G.O. W/FX/180	



DEBURR

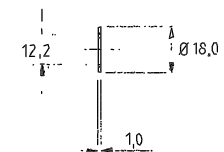
TITLE		
32 BUSH		
MATERIAL	SCALE	TOLERANCES
PHOSPHER BRQZ	1:1	X
FINISH	NO REQ. PER UNIT	XX ± 0,5
NATURAL	1	XXX ± 0,1
G.A. No.	DRAWING No.	
V/FX/150	R.G.O. W/FX/182	



DEBURR

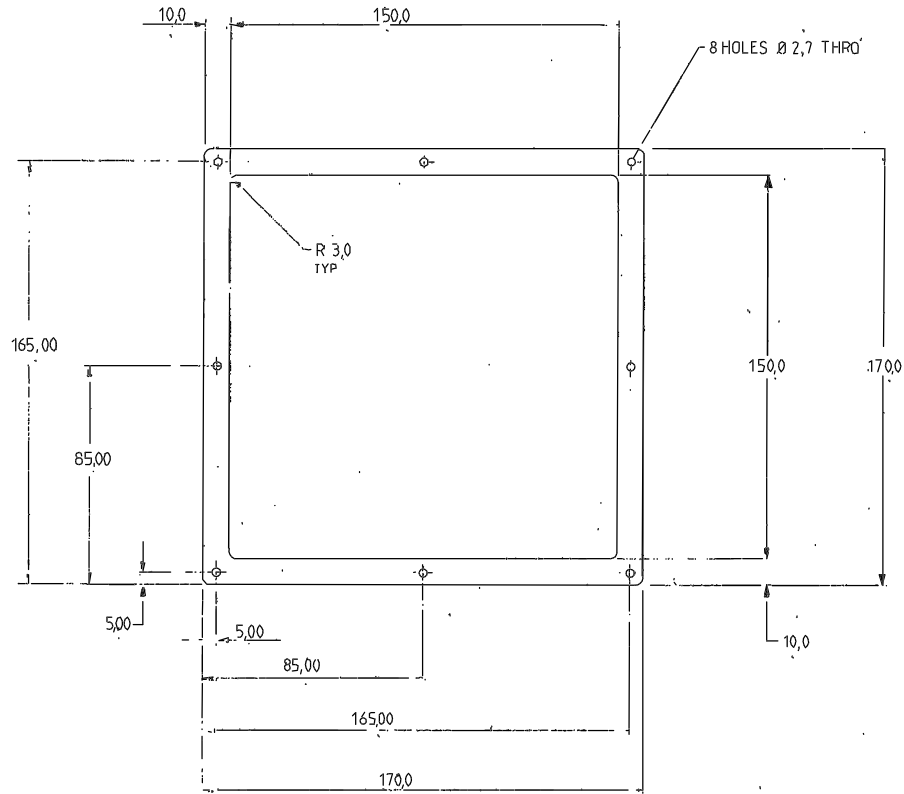
MODIFY STD SYNCHROFLEX
TIMING PULLEY 8-T2,5/48
REF ITEM 74

TITLE		
31 PULLEY [DRG ONLY]		
MATERIAL	SCALE	TOLERANCES
MATT BLK ANODISE	1:1	X
FINISH	NO REQ. PER UNIT	XX ± 0,5
NATURAL	1	XXX ± 0,1
G.A. No.	DRAWING No.	
V/FX/150	R.G.O. W/FX/181	



DEBURR

TITLE		
33 THRUST WASHER		
MATERIAL	SCALE	TOLERANCES
PHOSPHER BRONZE	1:1	X
FINISH	NO REQ. PER UNIT	XX ± 0,5
NATURAL	1	XXX ± 0,1
G.A. No.	DRAWING No.	
V/FX/150	R.G.O. W/FX/183	

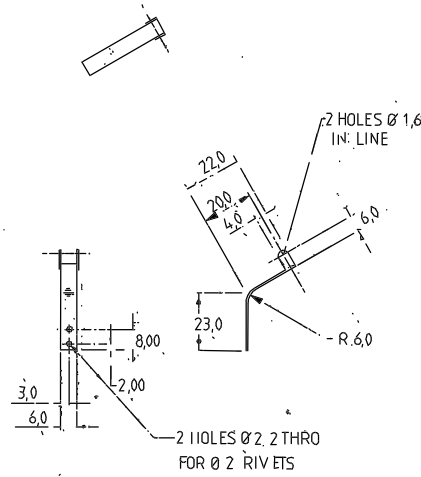


2,0 MM THICK SHEET

DEBURR

TITLE: 22 BELLOWS PLATE				
MATERIAL	SCALE	TOLERANCES		
ALUM ALLOY	1:1	x	y,x	0,5
FINISH	NO REQ PER UNIT	z,xx	xxx	0,1
MATT BLK ANODISE	1			
G.A. No.	DRAWING No.			
V/FX/50	R.G.O. W/FX/172			

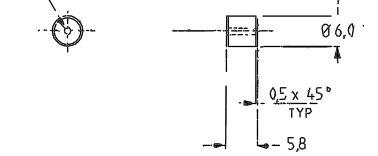
NOTE:
DRAWN IN SPRUNG
POSITION - SET AS
REQUIRED.



10 MM THICK DEBURR

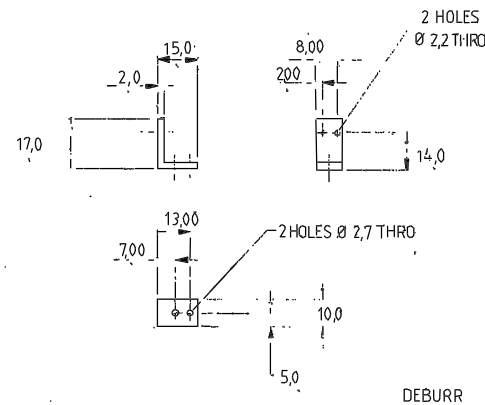
TITLE: 23 DETENT SPRING				
MATERIAL	SCALE	TOLERANCES		
BERYLLIUM COPPER	1:1	x	y,x	± 0,5
FINISH	NO REQ PER UNIT	z,xx	xxx	± 0,1
NATURAL	1			
G.A. No.	DRAWING No.			
V/FX/50	R.G.O. W/FX/173			

D'FIT ON Ø 1,5 DOWEL



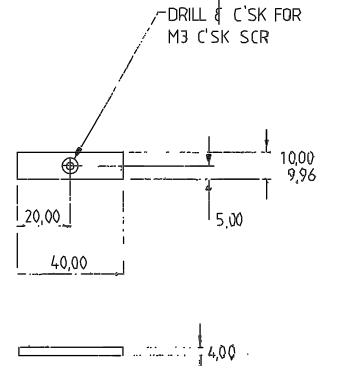
DEBURR

TITLE: 25 DETENT ROLLER				
MATERIAL	SCALE	TOLERANCES		
SILVER STEEL	2:1	x	y,x	± 0,5
FINISH	NO REQ PER UNIT	z,xx	xxx	± 0,1
NATURAL	1			
G.A. No.	DRAWING No.			
V/FX/50	R.G.O. W/FX/175			



DEBURR

TITLE: 24 DETENT BRACKET				
MATERIAL	SCALE	TOLERANCES		
M, STL	1:1	x	y,x	± 0,5
FINISH	NO REQ PER UNIT	z,xx	xxx	± 0,1
BLK NICKEL PLT	1			
G.A. No.	DRAWING No.			
V/FX/50	R.G.O. W/FX/174			



DEBURR

TITLE: 26 CAMERA KEY				
MATERIAL	SCALE	TOLERANCES		
MILD STL	1:1	x	y,x	± 0,5
FINISH	NO REQ PER UNIT	z,xx	xxx	± 0,1
BLK NICKEL PLT	2			
G.A. No.	DRAWING No.			
V/FX/50	R.G.O. W/FX/176			

Issue	Mod. No.	Date	Drawn By	Issue	Mod. No.	Date	Drawn By

Tolerances unless
otherwise stated!

Material

Finish

Dim's in m.m.

Scale

ROYAL GREENWICH OBSERVATORY,
HERSTMONCEUX CASTLE,
HAILSHAM

Scale

Title

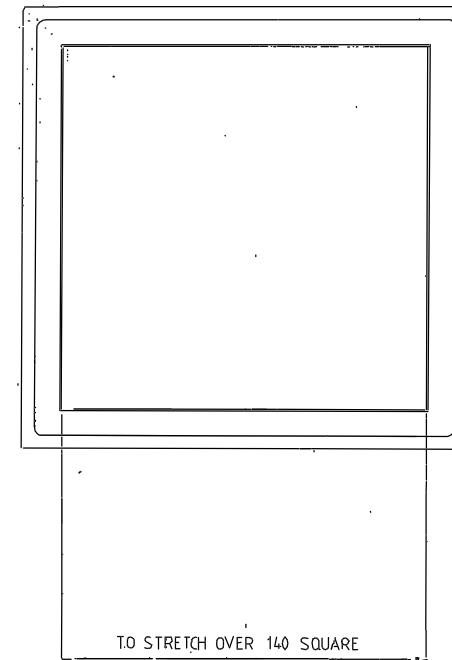
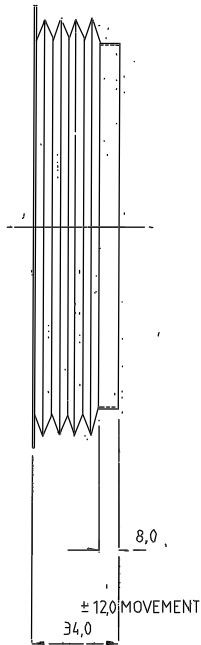
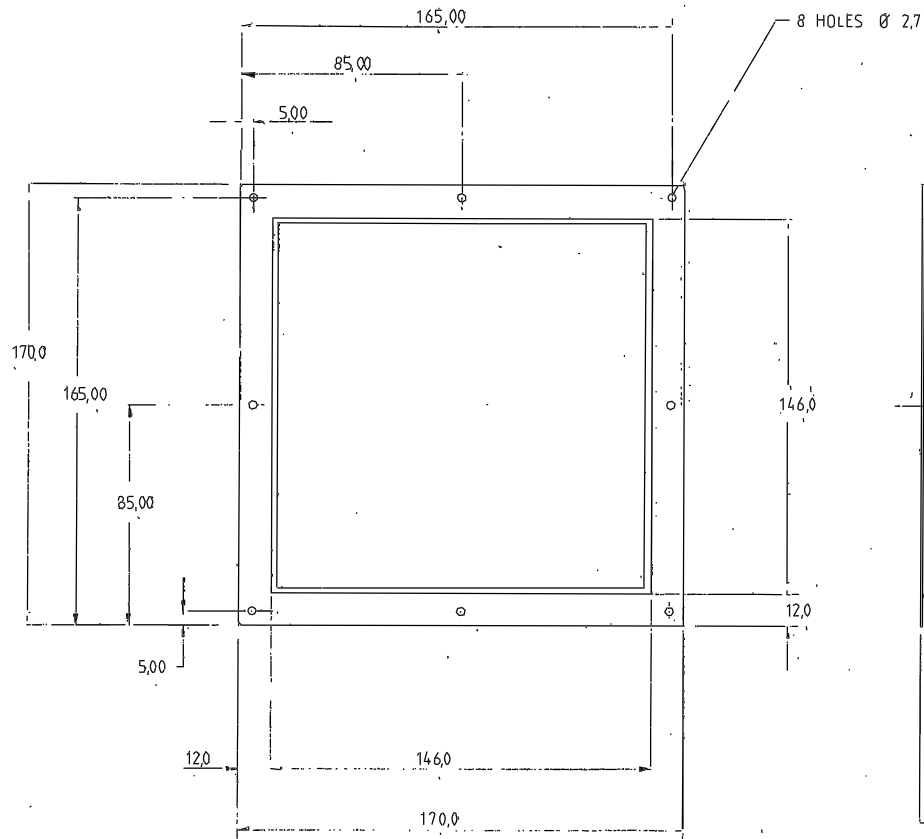
THIRD ANGLE PROJECTION

DETAIL

G.A. No.

Drawing No.

172
W/FX/176 TO

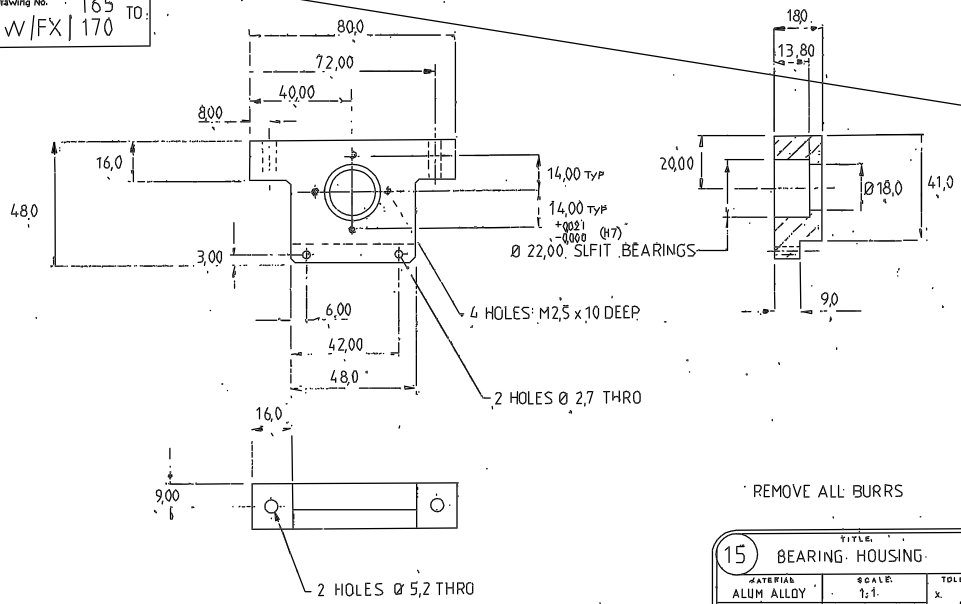


SEE SAMPLE MATERIAL

21		TITLE	
BELLWS			
MATERIAL	SCALE	TOLERANCES	
NEOPRENE	1:1	x	
FINISH	No REQ. PER UNIT	xx	± 0,5
BLACK	1	xxx	± 0,1
G.A. No.	DRAWING No.		
W/FX/150	R.G.O. W/FX/171		

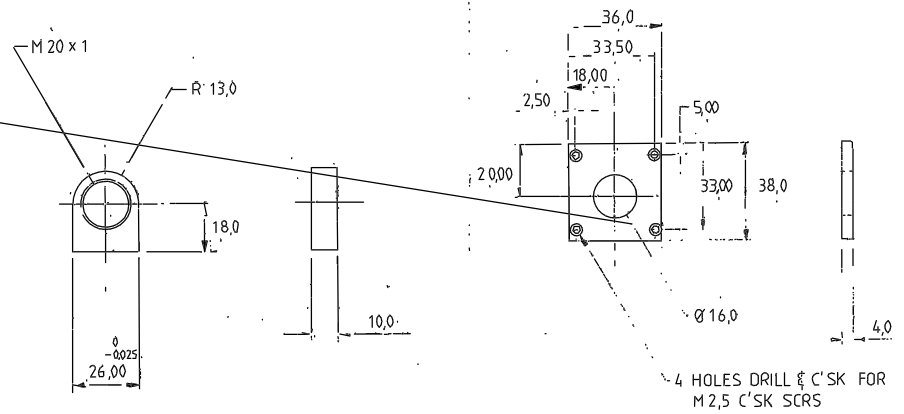
								Tolerances (Unless otherwise stated)		Material		Drawings in m.m.		Scale		THIRD ANGLE PROJECTION		G.A. No.	
								X ±		Finish		Drg. No.		No. Req.		DETAIL		Drawing No.	
								XX ±		ROYAL GREENWICH OBSERVATORY,		HERSTMONCEUX CASTLE,		SUSSEX.		W/FX/171			
								XXX ±		Used on									
Issue	Mod. No.	Date	Drawn By	Issue	Mod. No.	Date	Drawn By												
						JAN 87	ETH												

Drawing No. 165 TO:
W/FX/170



REMOVE ALL BURRS

15 BEARING HOUSING		
MATERIAL	SCALE	TOLERANCES
ALUM ALLOY	1:1	X ± 0,5
FINISH	No REQ. PER UNIT	XX ± 0,1
MATT BLK ANODISE	1	XXX ± 0,1
G.A. No. V/FX/150 DRAWING No. R.G.O. W/FX/165		

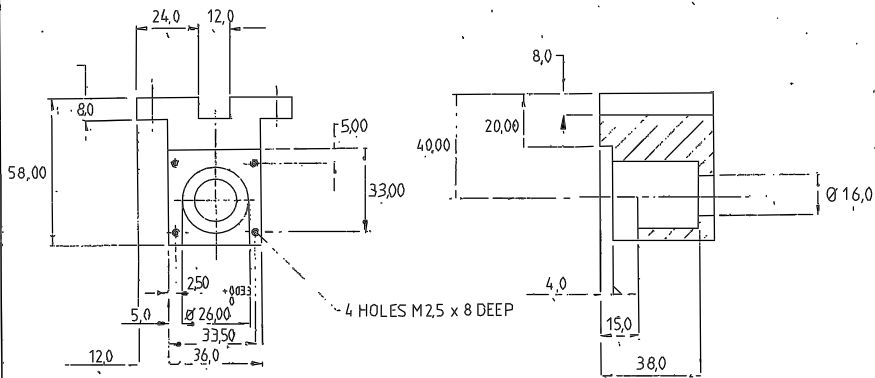


REMOVE ALL BURRS

17 BALL NUT KEY		
MATERIAL	SCALE	TOLERANCES
MILD STL	1:1	X ± 0,5
FINISH	No REQ. PER UNIT	XX ± 0,1
BLK NICKEL PLT	2	XXX ± 0,1
G.A. No. V/FX/150 DRAWING No. R.G.O. W/FX/167		

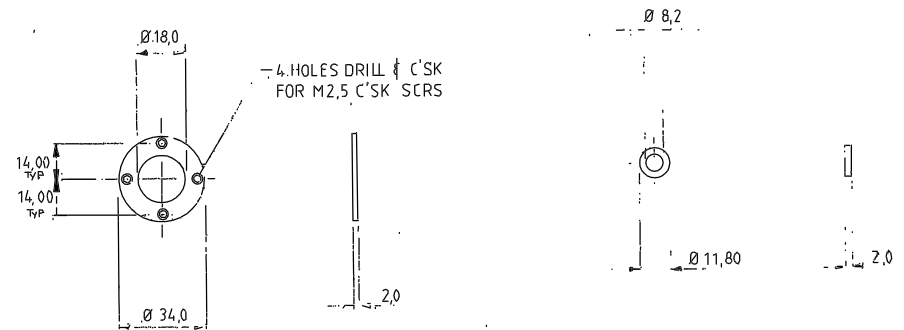
DEBURR

19 END PLATE		
MATERIAL	SCALE	TOLERANCES
ALUM ALLOY	1:1	X ± 0,5
FINISH	No REQ. PER UNIT	XX ± 0,1
MATT BLK ANODISE	2	XXX ± 0,1
G.A. No. V/FX/150 DRAWING No. R.G.O. W/FX/169		



REMOVE ALL BURRS

16 BALL NUT HOUSING		
MATERIAL	SCALE	TOLERANCES
ALUM ALLOY	1:1	X ± 0,5
FINISH	No REQ. PER UNIT	XX ± 0,1
MATT BLK ANODISE	1	XXX ± 0,1
G.A. No. V/FX/150 DRAWING No. R.G.O. W/FX/166		



DEBURR

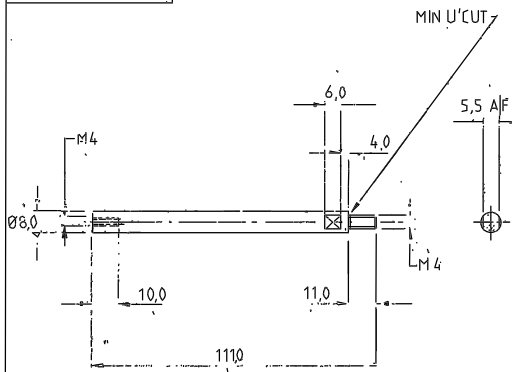
18 RETAINING RING		
MATERIAL	SCALE	TOLERANCES
ALUM ALLOY	1:1	X ± 0,5
FINISH	No REQ. PER UNIT	XX ± 0,1
MATT BLK ANODISE	3	XXX ± 0,1
G.A. No. V/FX/150 DRAWING No. R.G.O. W/FX/168		

DEBURR

20 BEARING WASHER		
MATERIAL	SCALE	TOLERANCES
ST-STL	1:1	X ± 0,5
FINISH	No REQ. PER UNIT	XX ± 0,1
NATURAL	2	XXX ± 0,1
G.A. No. V/FX/150 DRAWING No. R.G.O. W/FX/170		

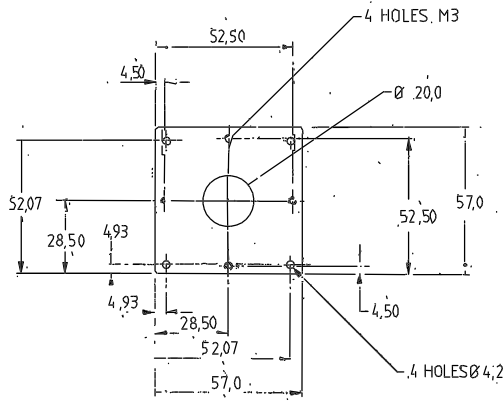
Tolerances (Unless otherwise stated)						Material		Dimms in mm.		Scale		Title		THIRD ANGLE PROJECTION		G.A. No.		
Issue	Mod. No.	Date	Drawn By	Issue	Mod. No.	Date	Drawn By	Finish	Use on	Proj. No.	No. Req.	Proj. No.	No. Req.	Proj. No.	No. Req.	Proj. No.	No. Req.	Proj. No.
			JAN 87	BTH														
ROYAL GREENWICH OBSERVATORY, HERSTMENCEUX CASTLE, HAILSHAM, SUSSEX.																		
DETAIL																		
Drawing No. 165 TO W/FX/170																		

Drawing No. 159 TO
W/FX/164



DEBURR

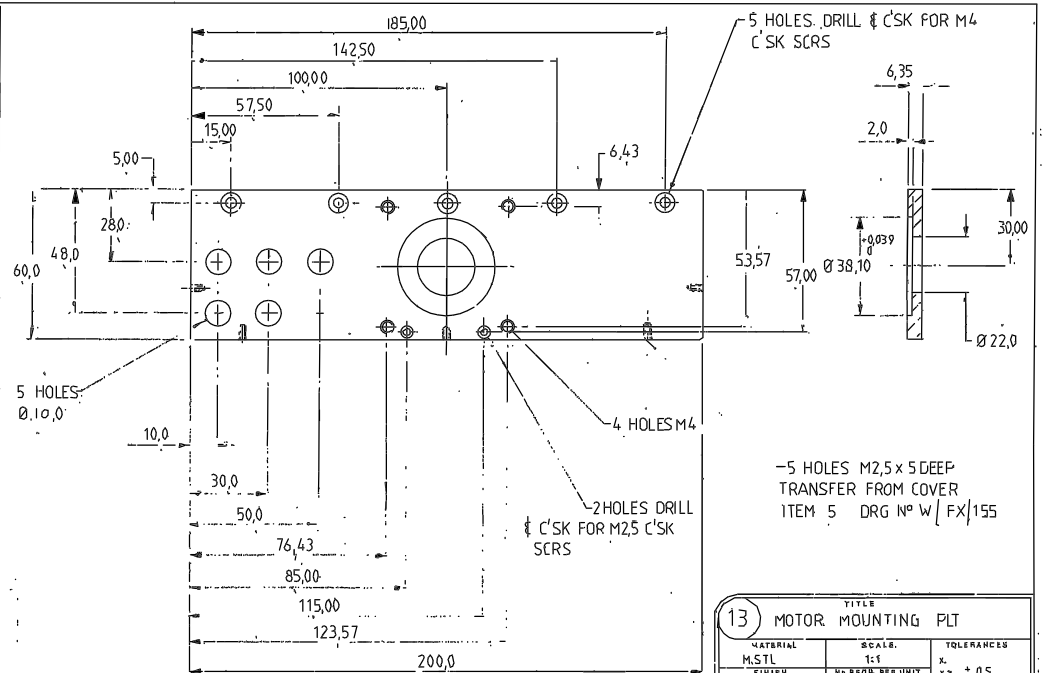
9 TIE ROD			
MATERIAL	SCALE	TOLERANCES	
MILD STL	1:1	X	XX ± 0,5
FINISH	No REQ. PER UNIT	XX	XXX ± 0,1
BLK NICKEL PLT	4	XX	XXX ± 0,1
G.A. No.	DRAWING No.		
	R.G.O. W/FX/159		



6,35MM THICK

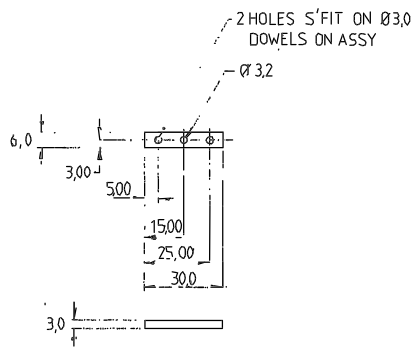
REMOVE ALL BURRS

11 BRAKE MOUNTING PLT			
MATERIAL	SCALE	TOLERANCES	
M. STL	1:1	X	XX ± 0,5
FINISH	No REQ. PER UNIT	XX	XXX ± 0,1
BLK NICKEL PLT	1	XX	XXX ± 0,1
G.A. No.	DRAWING No.		
W/FX/150	R.G.O. W/FX/161		



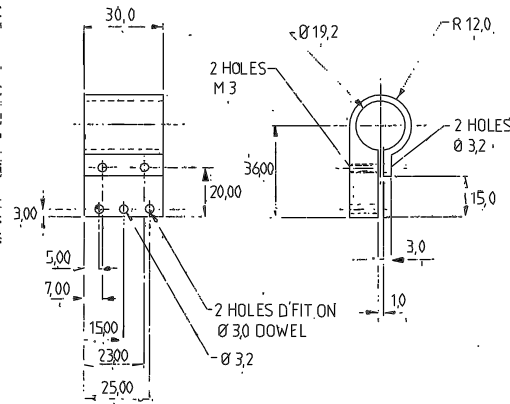
REMOVE ALL BURRS

13 MOTOR MOUNTING PLT			
MATERIAL	SCALE	TOLERANCES	
M. STL	1:1	X	XX ± 0,5
FINISH	No REQ. PER UNIT	XX	XXX ± 0,1
BLK NICKEL PLT	1	XX	XXX ± 0,1
G.A. No.	DRAWING No.		
W/FX/150	R.G.O. W/FX/163		



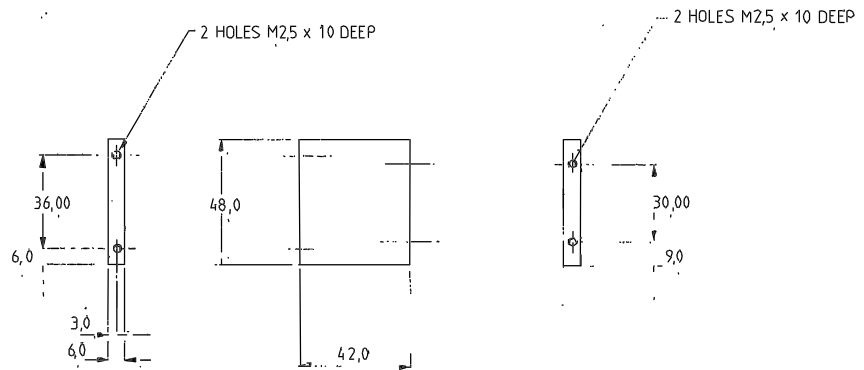
DEBURR

10 SPACER			
MATERIAL	SCALE	TOLERANCES	
ALUM ALLOY	1:1	X	XX ± 0,5
FINISH	No REQ. PER UNIT	XX	XXX ± 0,1
MATT BLK ANODISE	1	XX	XXX ± 0,1
G.A. No.	DRAWING No.		
	R.G.O. W/FX/160		



REMOVE ALL BURRS

12 L.V.D.T. BRKT.			
MATERIAL	SCALE	TOLERANCES	
M STL	1:1	X	XX ± 0,5
FINISH	No REQ. PER UNIT	XX	XXX ± 0,1
BLK NICKEL PLT	1	XX	XXX ± 0,1
G.A. No.	DRAWING No.		
W/FX/150	R.G.O. W/FX/162		

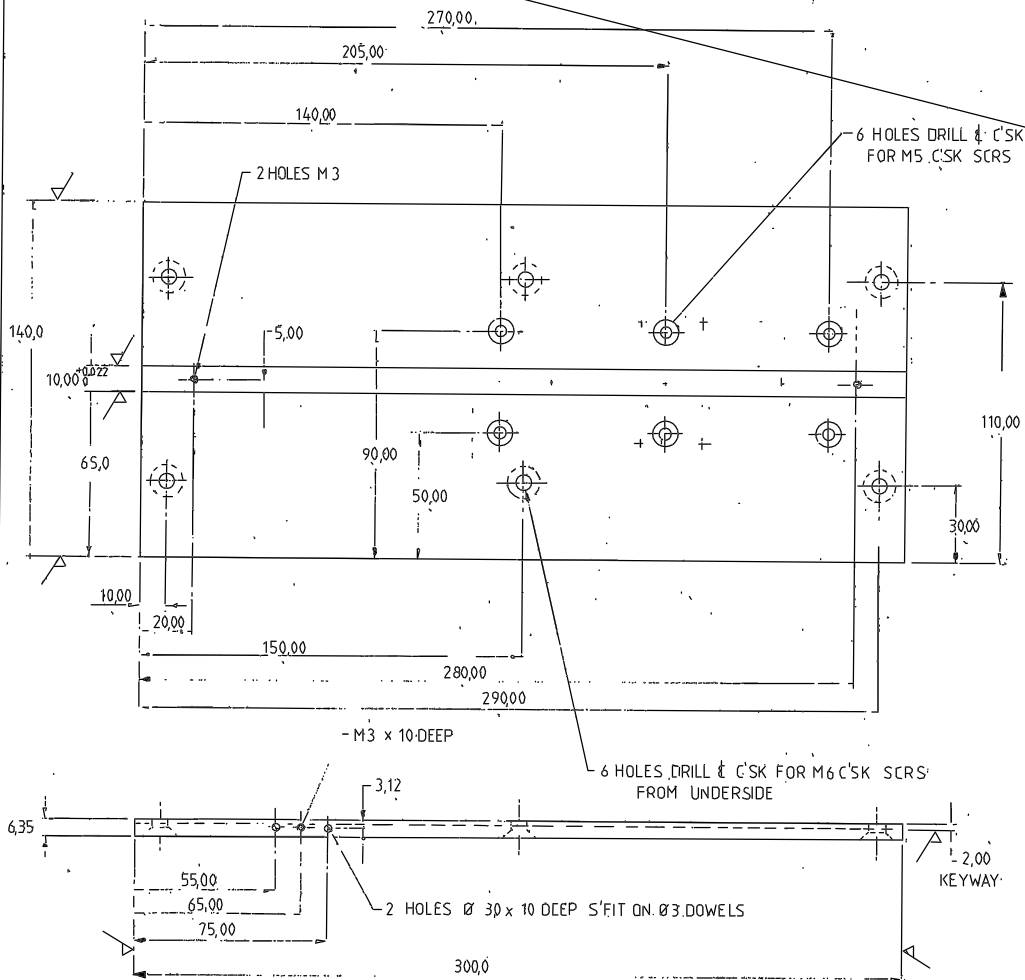


REMOVE ALL BURRS

14 SPACER			
MATERIAL	SCALE	TOLERANCES	
ALUM ALLOY	1:1	X	XX ± 0,5
FINISH	No REQ. PER UNIT	XX	XXX ± 0,1
MATT BLK ANODISE	1	XX	XXX ± 0,1
G.A. No.	DRAWING No.		
W/FX/150	R.G.O. W/FX/164		

Tolerances (unless otherwise stated)		Material		Dim's in m.m.		Scale		THIRD ANGLE PROJECTION		Title	
X	±										
XX	±										
XXX	±										
Material				Dim's in m.m.		Scale		THIRD ANGLE PROJECTION		Title	
Finish				Drg. No.		No. Req.		ROYAL GREENWICH OBSERVATORY, HERSTMONCEUX CASTLE, HAILSHAM		SUSSEX.	
Used on				Drawing No.		W/FX/159 TO W/FX/164					

Drawing No. 156
W/FX/158 TO



REMOVE ALL BURRS AND SHARP EDGES

6		TITLE CAMERA MOUNTING PLT	
MATERIAL ALCOA PLT	SCALE 1:1	TOLERANCES X XX ± 0.5 XXX ± 0.1	
FINISH MATT BLK ANODISE	No REQ. PER UNIT 1		
G.A. No. V/FX/150	DRAWING No. R.G.O. W/FX/156		

Issue	Mod. No.	Date	Drawn By	Issue	Mod. No.	Date	Drawn By
			JAN 87				ETH

Tolerances (unless otherwise stated)
X ±
XX ±
XXX ±

Material
Finish

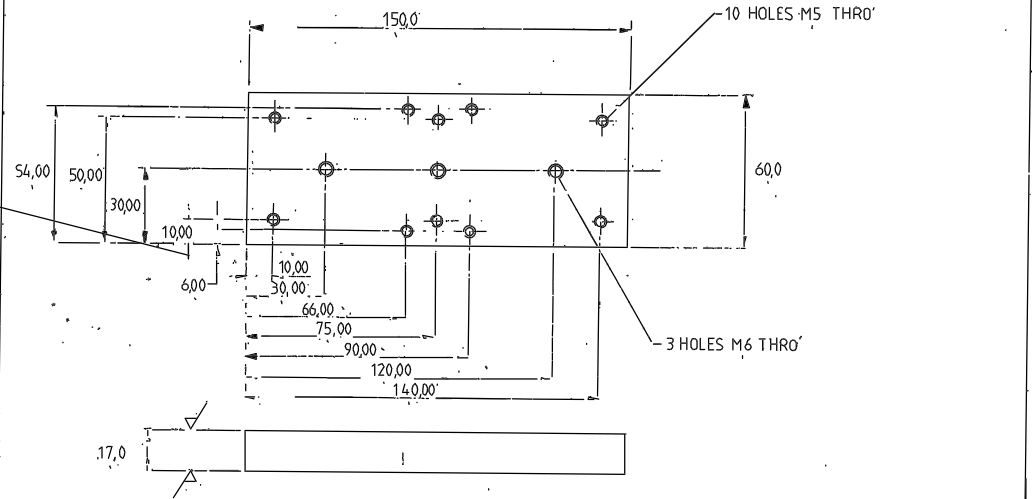
Dim in mm
Scale
Title
R.G.O. No.
Used on

ROYAL GREENWICH OBSERVATORY,
HERSTMONCEUX CASTLE
HAILSHAM SUSSEX.

THIRD ANGLE PROJECTION.

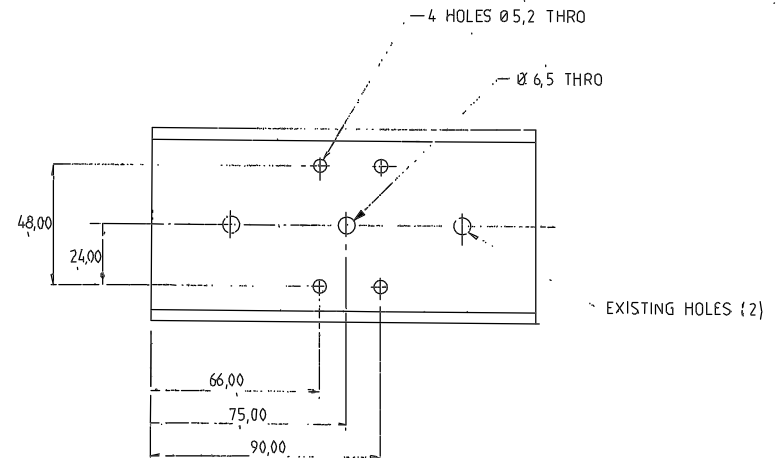
DETAIL

G.A. No.
Drawing No. 156
W/FX/158 TO



REMOVE ALL BURRS AND SHARP EDGES

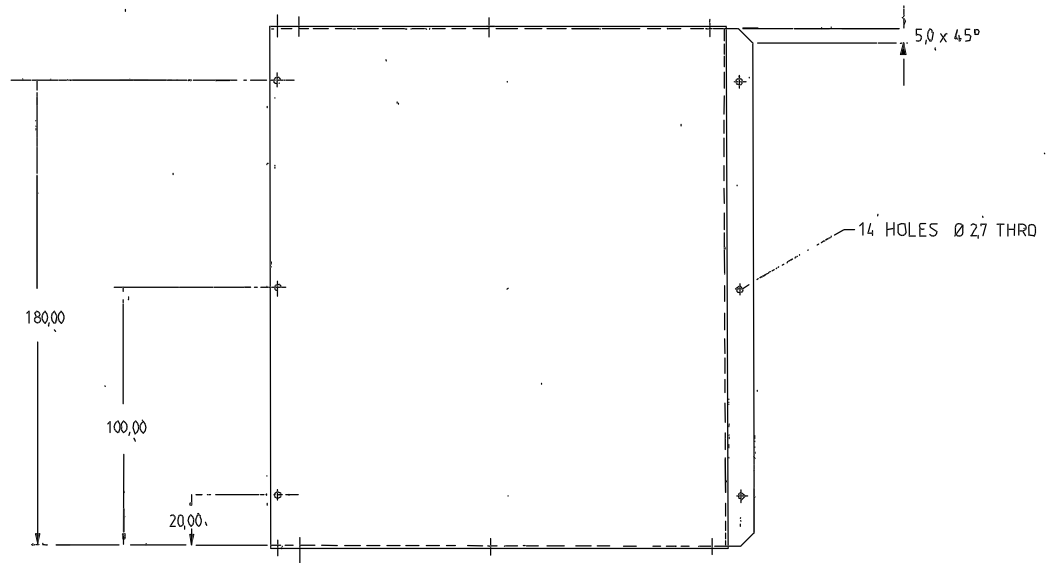
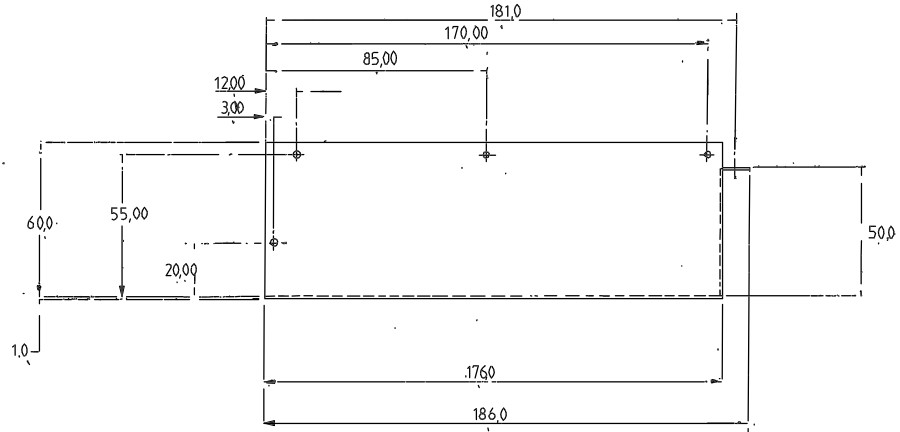
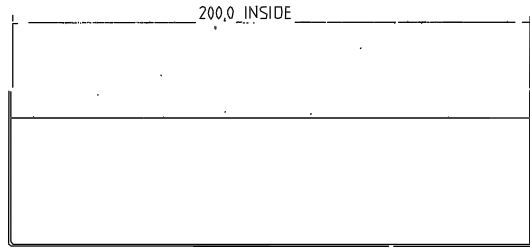
7		TITLE SPACER (SLIDE)	
MATERIAL ALUMINIUM ALLOY	SCALE 1:1	TOLERANCES X XX ± 0.5 XXX ± 0.1	
FINISH MATT BLK ANODISE	No REQ. PER UNIT 1		
G.A. No. V/FX/150	DRAWING No. R.G.O. W/FX/157		



MODIFY HEPCO STD SLIDE M/150/3 REF ITEM 73

REMOVE ALL BURRS AND SHARP EDGES

8		TITLE SLIDE [DRG ONLY]	
MATERIAL SLIDE	SCALE 1:1	TOLERANCES X XX ± 0.5 XXX ± 0.1	
FINISH MATT BLK ANODISE	No REQ. PER UNIT 1		
G.A. No. V/FX/150	DRAWING No. R.G.O. W/FX/158		

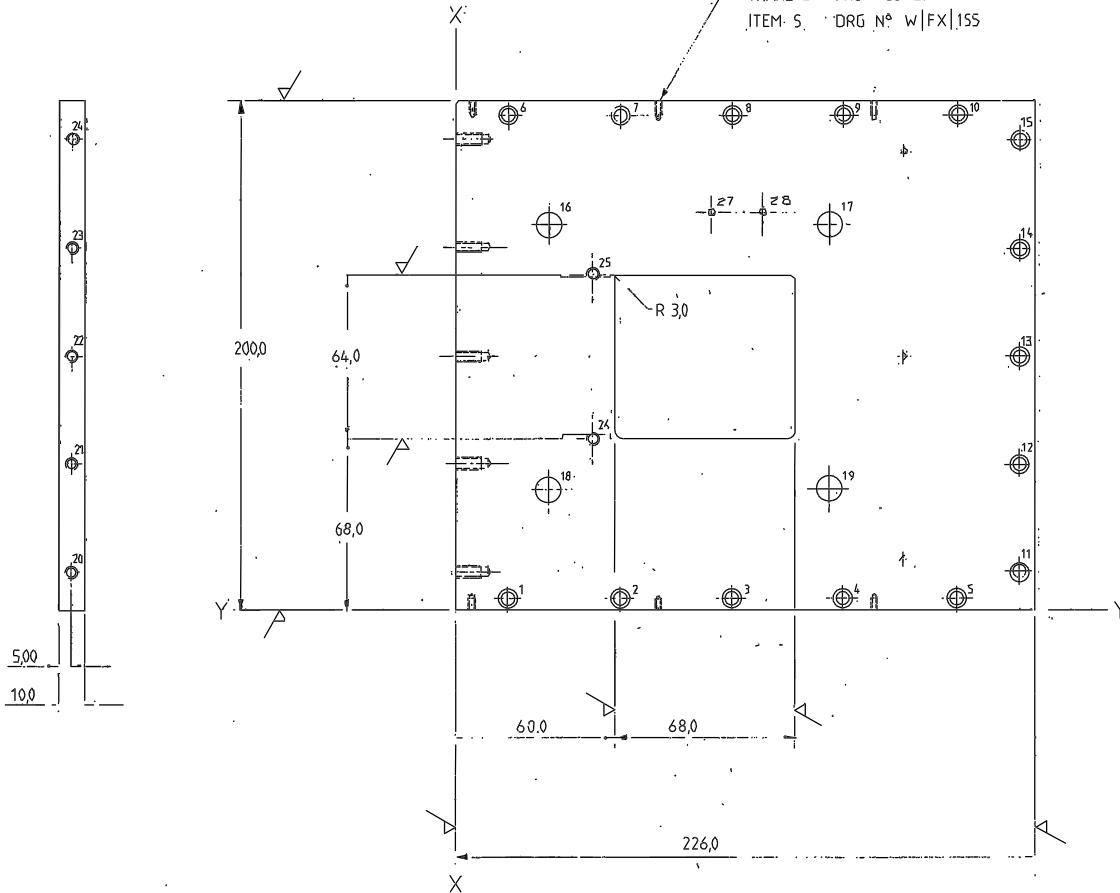


NOTE — WELDED ASSY
CABLE ACCESS, AS REQ^D
REMOVE ALL BURRS AND SHARP EDGES

5 COVER		TITLE	
MATERIAL	SCALE	TOLERANCES	
ALUM ALLOY	1:1	X	± 0,5
FINISH	NO REQ. PER UNIT	XX	± 0,1
MATT BLK ANODISE	1	XXX	± 0,1
D.A. N.O.	DRAWING NO.		
VV/FX/155	R.G.O. VV/FX/155		

								Tolerances (Unless otherwise stated)		Material		Dimms in m.m.		Scale		THIRD ANGLE PROJECTION		G.A. No.	
								X ±		JRNØ7		ROYAL GREENWICH OBSERVATORY,				Title		Drawing No.	
								XX ±		BYH		HERSTMONCEUX CASTLE,				DETAIL		VV/FX/155	
								XXX ±		Used on		HAILSHAM							
Issue	Mod. No.	Date	Drawn By	Issue	Mod. No.	Date	Drawn By												

9 HOLES M2.5 x 5 DEEP.
TRANSFER FROM COVER
ITEM 5 DRG N° W/FX/155



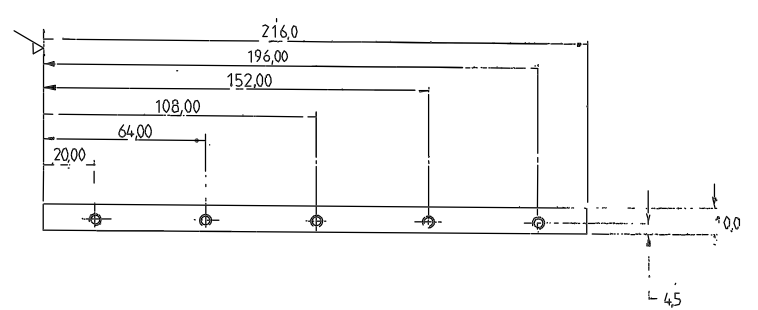
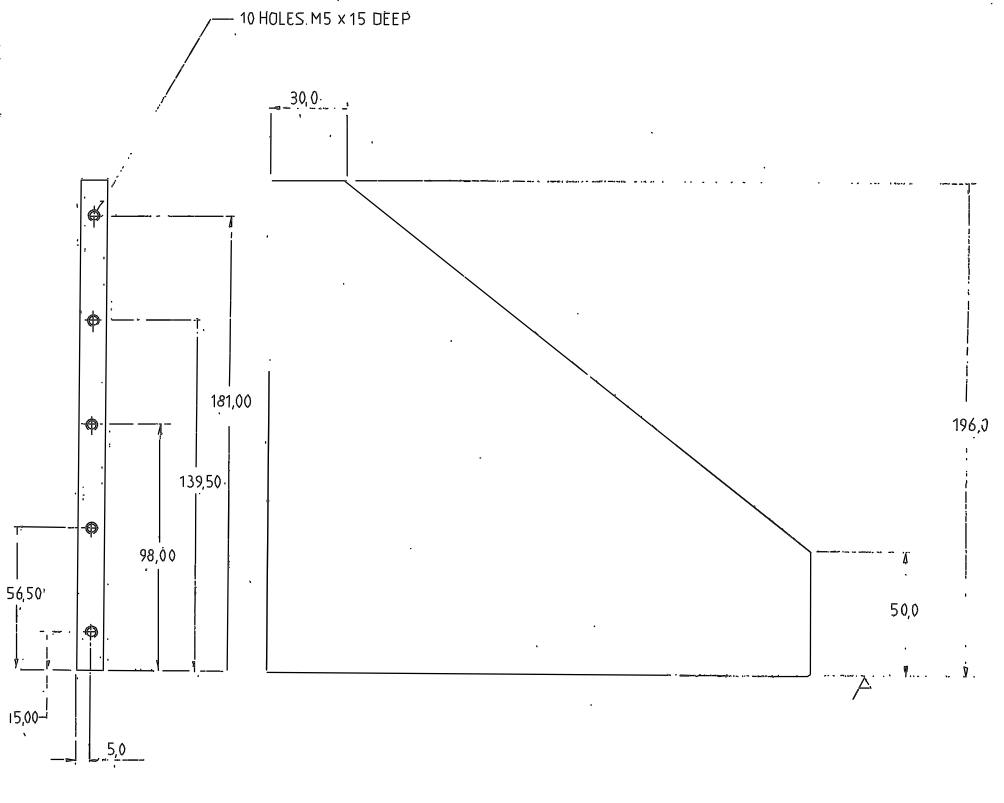
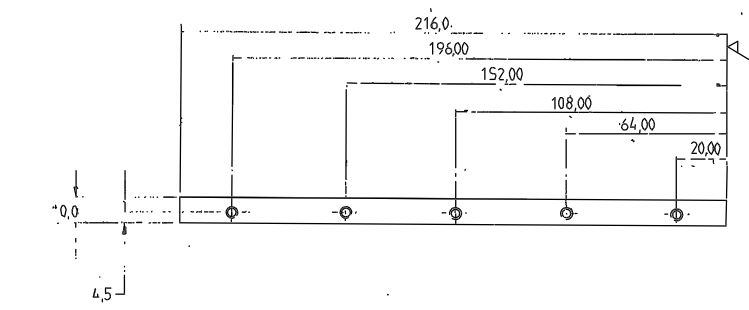
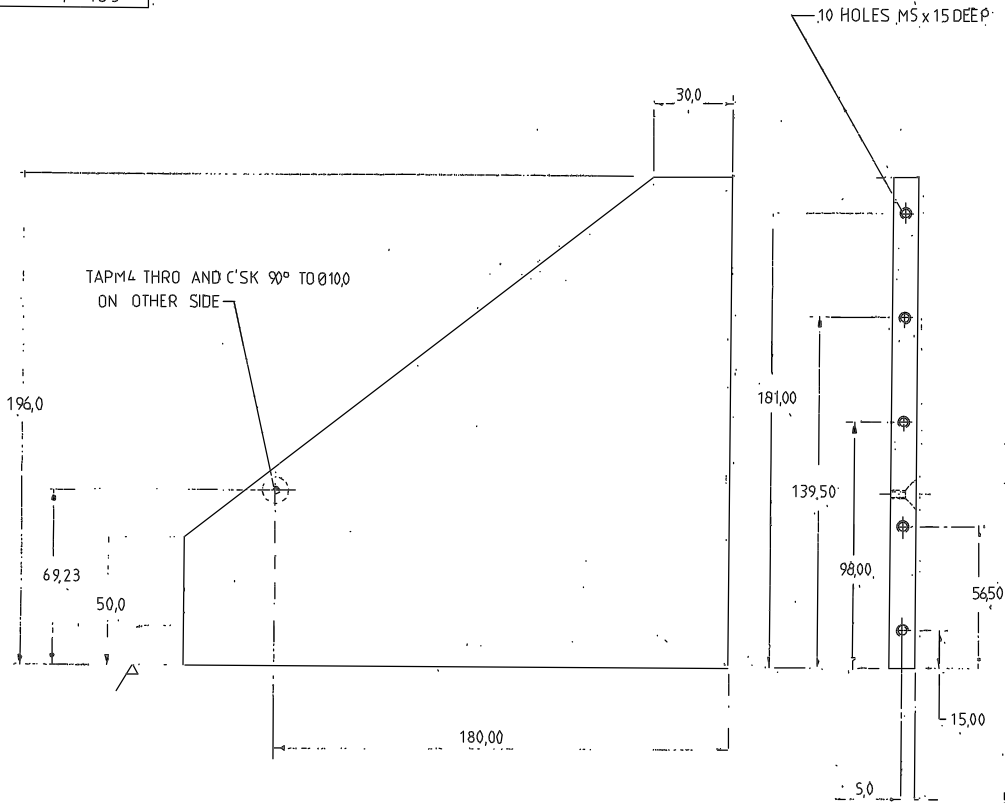
HOLE	SIZE	DIST FROM 'Y-Y'	DIST FROM 'X-X'
1	Ø 5,5 THRO C BORE Ø 9,5 X 5,0 DEEP	5,50	20,00
2	"	"	64,00
3	"	"	108,00
4	"	"	152,00
5	"	"	196,00
6	"	194,50	20,00
7	"	"	64,00
8	"	"	108,00
9	"	"	152,00
10	"	"	196,00
11	"	15,00	220,50
12	"	57,50	"
13	"	100,00	"
14	"	142,50	"
15	"	185,00	"
16	Ø 10,00 ±0,015	151,75	36,00
17	"	151,75	146,00
18	"	48,25	36,00
19	"	48,25	146,00
20	M4 X 10,0 DEEP	15,00	---
21	"	57,50	---
22	"	100,00	---
23	"	142,50	---
24	"	185,00	---
25	M5 THRO	68,00	51,00
26	"	132,00	51,00
27	M3 THRO	157,00	100,00
28	M3 THRO	157,00	120,00

REMOVE ALL BURRS AND SHARP EDGES

4 BASE PLATE		
MATERIAL	SCALE	TOLERANCES
ALCOA PIT	1:1	±
FINISH	NO REQ PER UNIT	±0.5
MATT BLK AND DISE	1	±0.1
C.A. No.	DRAWING No.	
W/FX/150	R.G.O. W/FX/154	

Tolerances (unless otherwise stated)						Material		Dimms in m.m.		Scale		THIRD ANGLE PROJECTION		Title		Drawing No.	
Issue	Mod. No.	Date	Drawn By	Issue	Mod. No.	Date	Drawn By	Finish	Drq. No.	No. Req.	ROYAL GREENWICH OBSERVATORY, HERSTMONCEUX CASTLE, HAILSHAM SUSSEX.	DETAIL		W/FX/154			

Drawing No. 152 TO
W/FX/153



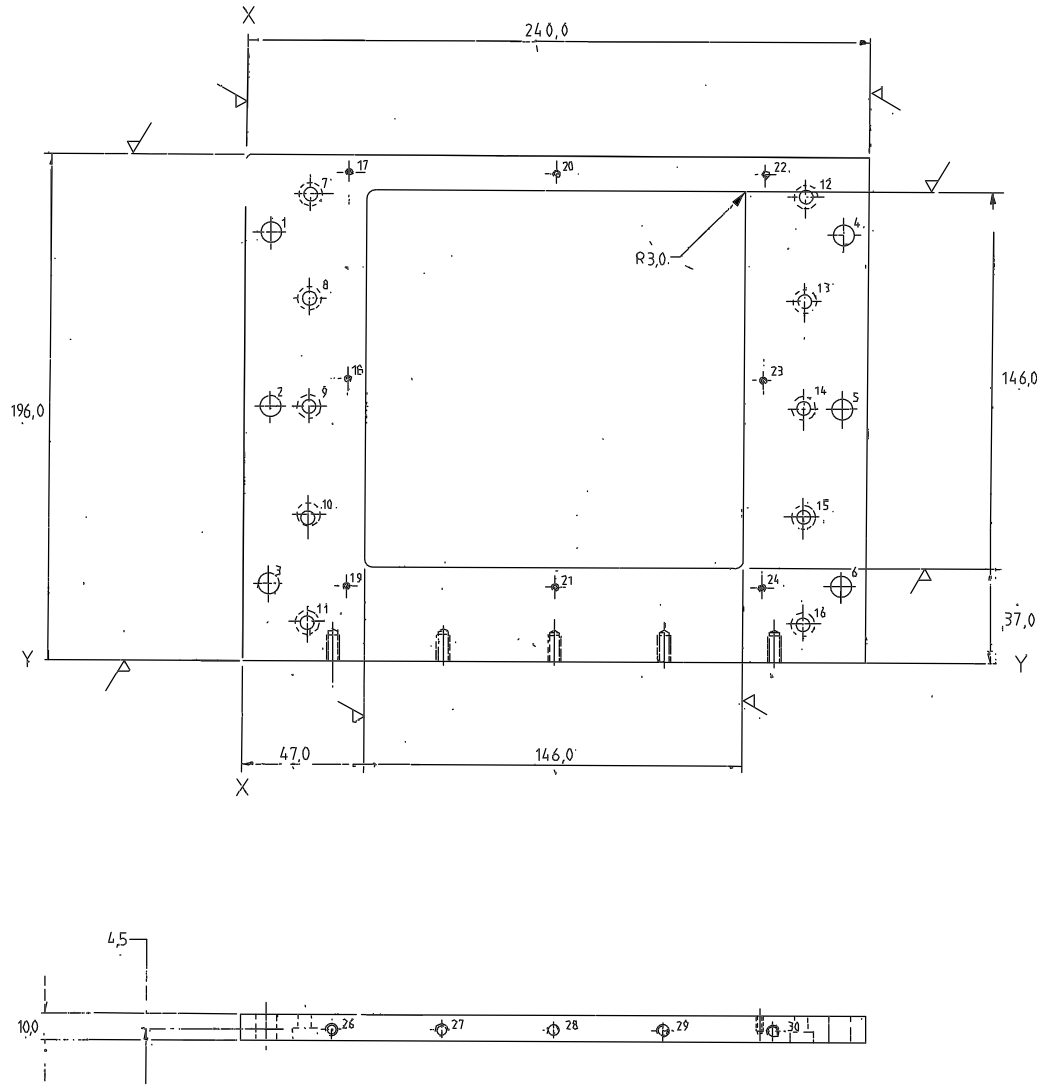
2		TITLE RIGHT HAND SIDE PLT	
MATERIAL ALCOA PLT	SCALE 1:1	TOLERANCES	
FINISH MATT BLK ANODISE	NO REQ. PER UNIT 1	XY ± 0.5	XX ± 0.1
G.A. No. W/FX/150	R.G.O. W/FX	DRAWING No. 152	

REMOVE ALL BURRS AND SHARP EDGES

3		TITLE LEFT HAND SIDE PLT	
MATERIAL ALCOA PLT	SCALE 1:1	TOLERANCES	
FINISH MATT BLK ANODISE	NO REQ. PER UNIT 1	XY ± 0.5	XX ± 0.1
G.A. No. W/FX/150	R.G.O. W/FX	DRAWING No. 153	

REMOVE ALL BURRS AND SHARP EDGES.

Tolerances Unless otherwise stated						Material		Drawn in mm.		Scale		THIRD ANGLE PROJECTION		G.A. No.	
X ±						Finish		ROYAL GREENWICH OBSERVATORY,		Title		DETAIL		Drawing No.	
XX ±								HERSTMONCEUX CASTLE,						W/FX/152 TO	
XXX ±								HAILSHAM						153	
Issue	Mod. No.	Date	Drawn By	Issue	Mod. No.	Date	Drawn By	Used on	Drp. No.	No. Req.					

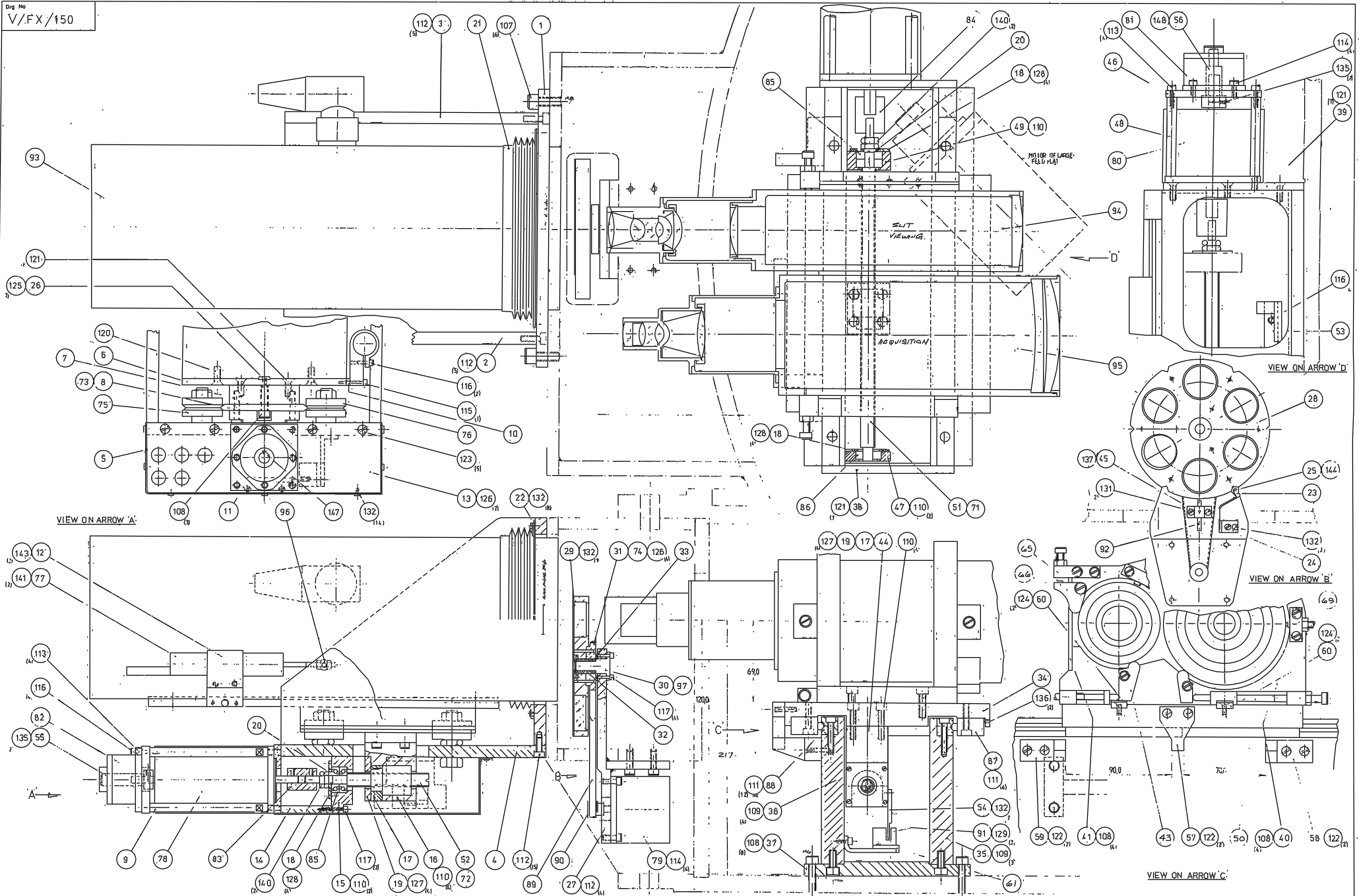


HOLE	SIZE	DIST FROM Y-Y	DIST FROM X-X
1	Ø 9,0 THRU	166,00	10,00
2	"	98,00	10,00
3	"	30,00	10,00
4	"	166,00	230,00
5	"	98,00	230,00
6	"	30,00	230,00
7	Ø 5,5 THRU C BORE Ø 9,5 X 5 D.P. ON OTHER SIDE	181,00	25,00
8	"	139,50	25,00
9	"	98,00	25,00
10	"	56,50	25,00
11	"	15,00	25,00
12	"	181,00	215,00
13	"	139,50	215,00
14	"	98,00	215,00
15	"	56,50	215,00
16	"	15,00	215,00
17	M 2,5 X 5 DEEP	190,00	40,00
18	"	110,00	40,00
19	"	30,00	40,00
20	"	190,00	120,00
21	"	30,00	120,00
22	"	190,00	200,00
23	"	110,00	200,00
24	"	30,00	200,00
25			
26	H5 X 10 DEEP	—	35,00
27	"	—	77,50
28	"	—	120,00
29	"	—	162,50
30	"	—	205,00

REMOVE ALL BURRS AND SHARP EDGES

1 END PLATE		
MATERIAL ALCOA PL1	SCALE 1:1	TOLERANCES X XX ± 0,5 XXX ± 0,1
FINISH MATT BLK ANODISE	NO REED PER UNIT 1	
G.A. No. V/FX/150	DRAWING No. R.G.O. W/FX/151	

Tolerances (Unless otherwise stated)								Material		Dimms in m.m.		Scale		THIRD ANGLE PROJECTION		Title	
X ± XX ± XXX ±								Finish		ROYAL GREENWICH OBSERVATORY, HERSTMONCEUX CASTLE, HAILSHAM		Scale		DETAIL		Drawing No. W/FX/151	
Issue	Mod. No.	Date	Drawn By	Issue	Mod. No.	Date	Drawn By	Used on	Dwg. No.	No. Req.	Used on						



Tolerances: Unless otherwise stated				Material		Dimens. in m.m.		Scale FULL SIZE		THIRD ANGLE PROJECTION		G.A. No.	
				Finish		ROYAL GREENWICH OBSERVATORY, HERSTMONCEUX CASTLE, HAILSHAM				2:2 m A & G UNIT CASE I		Drawing No.	
Issue	Mod. No	Date	Drawn By	Issue	Mod. No.	Date	Drawn By	Drawn on	No. Rev.	TELEVISION AND FOCAL REDUCING ARRANGEMENT.		V/FX/150	
			JAN 67				BTJ						