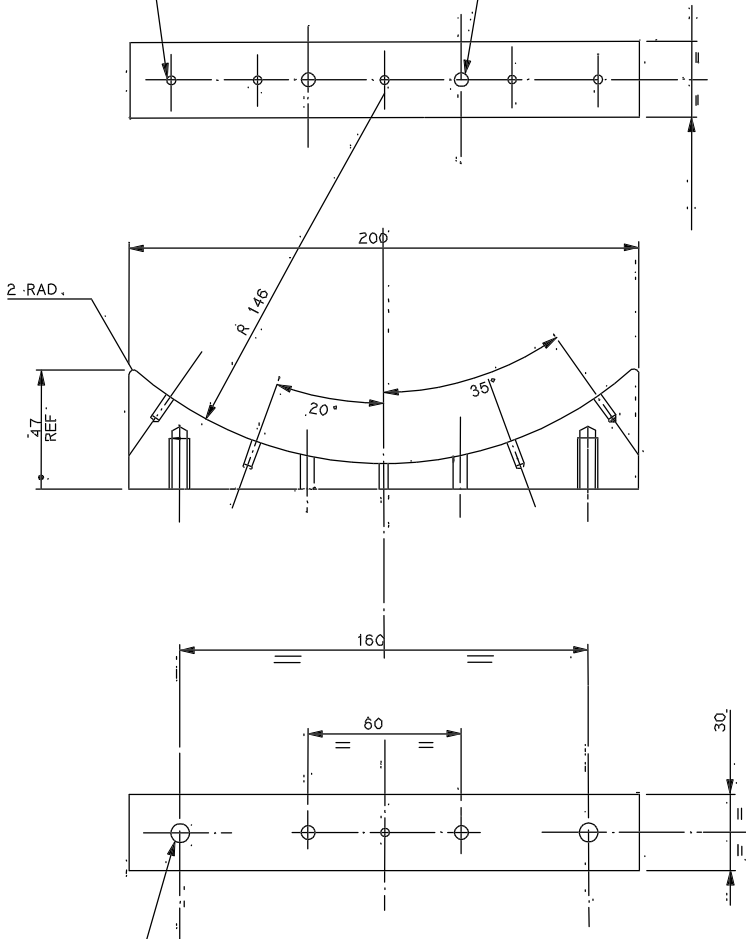


Drawing No.
W.

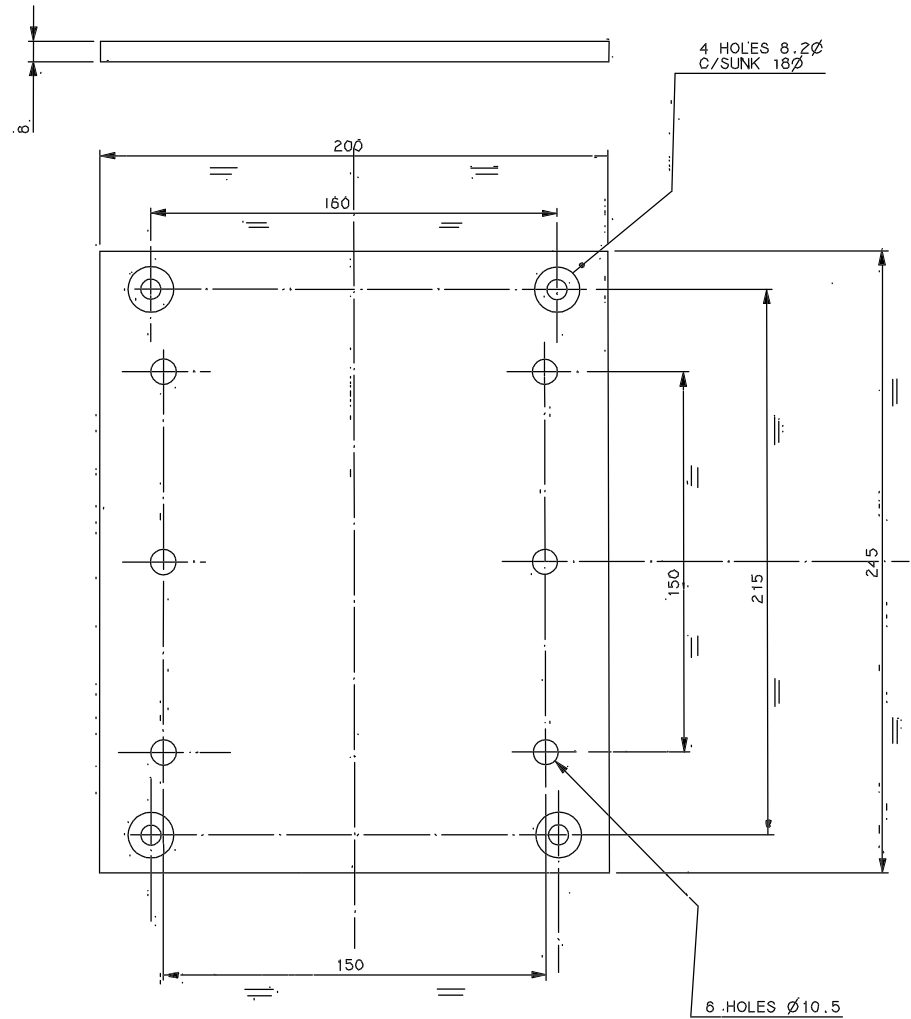
5 HOLES M4 BY 10 DEEP
SPOT THROUGH FROM ITEM 1

2 HOLES M6 THROUGH



2 HOLES M8 BY 20 DEEP

3	TITLE CHOCK	DISC. REF.
MATERIAL AL. ALLOY	SCALE 1:1	TOLERANCES ± 0.25
PAINT RAL 6005	FIN. REQ. PER PART TWO	
G.A. No.	DRG. No.	

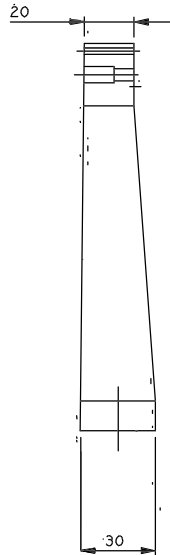


4	TITLE MOUNTING PLATE	DISC. REF.
MATERIAL AL. ALLOY	SCALE 1:1	TOLERANCES ± 0.25
PAINT RAL 6005	FIN. REQ. PER UNIT ONE	
G.A. No.	DRG. No.	

Tolerance (unless otherwise stated)				Material		Dim's. in m.m.		Scale		THIRD ANGLE PROJECTION		GA No.	
Issue	Mod. No.	Date	Drawn by	Issue	Mod. No.	Date	Drawn by	ROYAL GREENWICH OBSERVATORY	File	4.2m-ISIS/A&G AUXILIARY CALIBRATION	CAD NAME: CALBKT	Drawing No.	
ALIG 88 BTH				Finish		Used on		HERSTMONCEUX CASTLE		SUSSEX		W FX 513 1517	

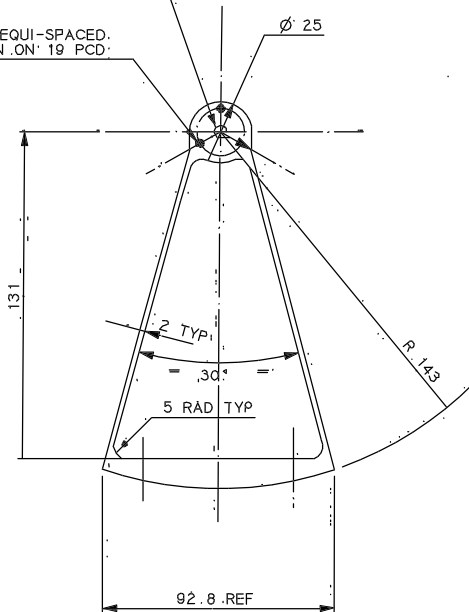
Drawing No.

W

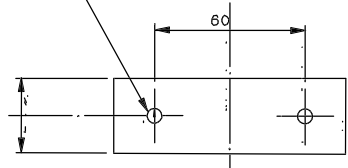


HOLE ϕ 5.1 C/BORE
OTHERSIDE ϕ 6.5 BY 12 DEEP

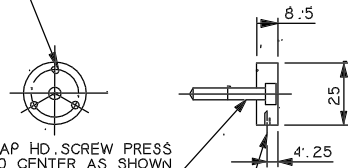
3 HOLES M3 EQUI-SPACED.
AS SHOWN ON 19 PCD



2 HOLES ϕ 6.2



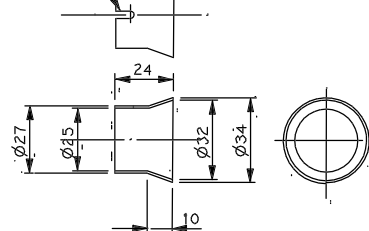
3 DETENTS EQUI-SPACED
ON 19 PCD



M 5 X 30 CAP HD. SCREW PRESS
FIT INTO CENTER AS SHOWN

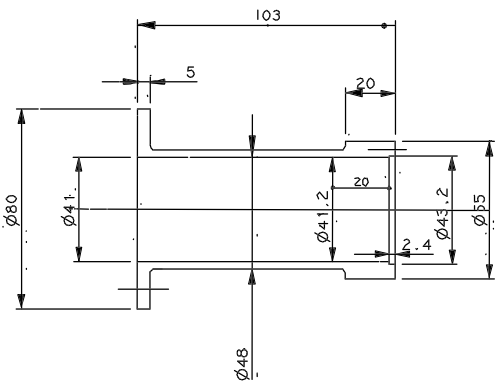
3 HOLES M 2.5 EQUI-SPACED
AROUND PERIFERY

3 SLOTTED HOLES 2.6 WIDE X 6 LONG

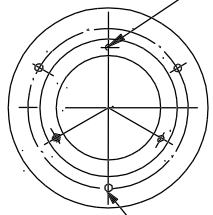


8	TITLE	DISC REF.
	SECONDARY CELL	
MATERIAL	SCALE	TOLERANCES
AL. ALLOY	1:1	0.25
FINISH	No. RECD. PER UNIT	
BL. ANODISE	ONE	
G.A. No.	DRAWING No.	
	RGO W FX S 2 3	

10	TITLE	DISC REF.
	SECONDARY BAFFLE	
MATERIAL	SCALE	TOLERANCES
AL. ALLOY	1:1	0.25
FINISH	No. RECD. PER UNIT	
BL. ANODISE	ONE	
G.A. No.	DRAWING No.	
	RGO W FX S 2 5	



3 HOLES M3 EQUI-SPACED
AS SHOWN ON 48.4 PCD



3 HOLES ϕ 3.1 EQUI-SPACED
AS SHOWN ON 64 PCD

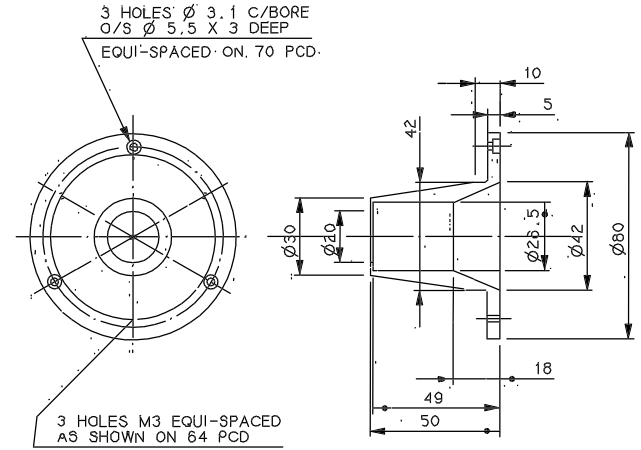
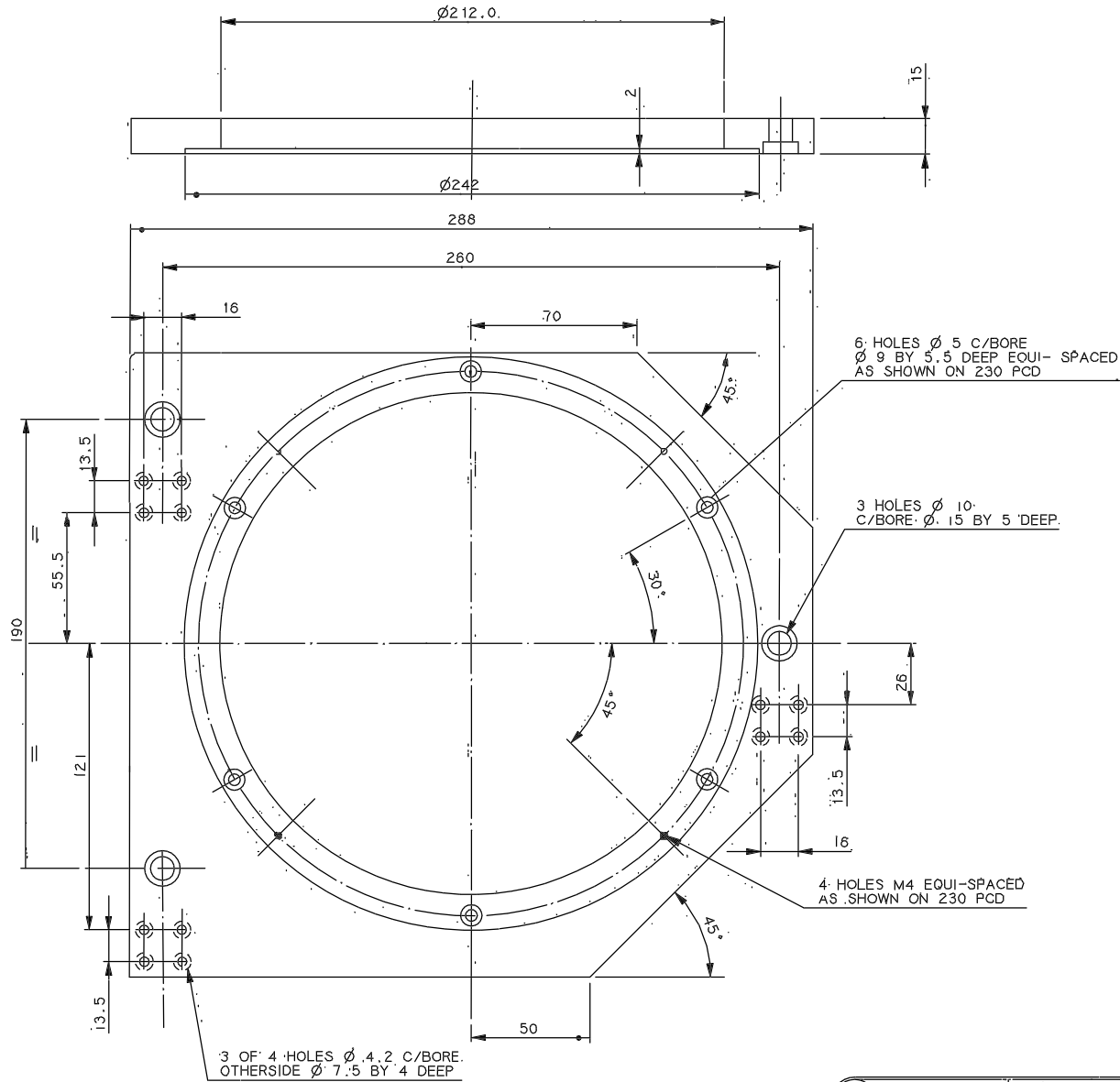
6	TITLE	DISC REF.
	(A) FRAME	
MATERIAL	SCALE	TOLERANCES
AL. ALLOY	1:1	0.25
FINISH	No. RECD. PER UNIT	
BL. ANODISE	ONE	
G.A. No.	DRAWING No.	
	RGO W FX S 2 1	

12	TITLE	DISC REF.
	LAMP MOUNT	
MATERIAL	SCALE	TOLERANCES
AL. ALLOY	1:1	0.25
FINISH	No. RECD. PER UNIT	
BL. ANODISE	ONE	
G.A. No.	DRAWING No.	
	RGO W FX S 2 7	

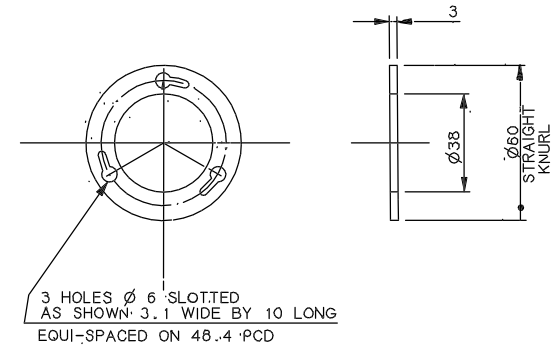
				Tolerance (unless otherwise stated)		Material:		D'mns. In m.m. Scale		THIRD ANGLE PROJECTION		G.A. No.	
				X +/-				ROYAL GREENWICH OBSERVATORY		4.2m ISIS/A&G AUXILIARY CALIBRATION		CAD, NAME AUXDET1	
				Y.X +/-				HERSTMONCEUX CASTLE		DETAILS'		Drawing No.	
				Z.XX +/-				HAILSHAM SUSSEX				W FX 521,523,525,527	
Issue	Mod.No	Date	Drawn by	Issue	Mod.No	Date	Drawn by	Used on	No. Seq.				

Drawing No.

W



TITLE		DISC REF.
11 LAMP END LOCATION		
MATERIAL	SCALE	TOLERANCES \pm
AL. ALLOY	1:1	X 0.25
FINISH	No. REQ. PER UNIT	X.X
BL. ANODISE	ONE	X.XX
DRAWING No.	DRAWING No.	
6.A. No.	6.A. No.	
RG0	RG0	



TITLE		DISC REF.
5 BASE PLATE		
MATERIAL	SCALE	TOLERANCES \pm
AL. ALLOY	1:1	X 0.2
FINISH	No. REQ. PER UNIT	X.X 0.1
BL. ANODISE	ONE	X.XX
DRAWING No.	DRAWING No.	
6.A. No.	6.A. No.	
RG0	RG0	

TITLE		DISC REF.
13 CLAMP RING		
MATERIAL	SCALE	TOLERANCES \pm
AL. ALLOY	1:1	X 0.25
FINISH	No. REQ. PER UNIT	X.X
BL. ANODISE	ONE	X.XX
DRAWING No.	DRAWING No.	
6.A. No.	6.A. No.	
RG0	RG0	

Issue	Mod.No	Date	Drawn by	Issue	Mod.No	Date	Drawn by

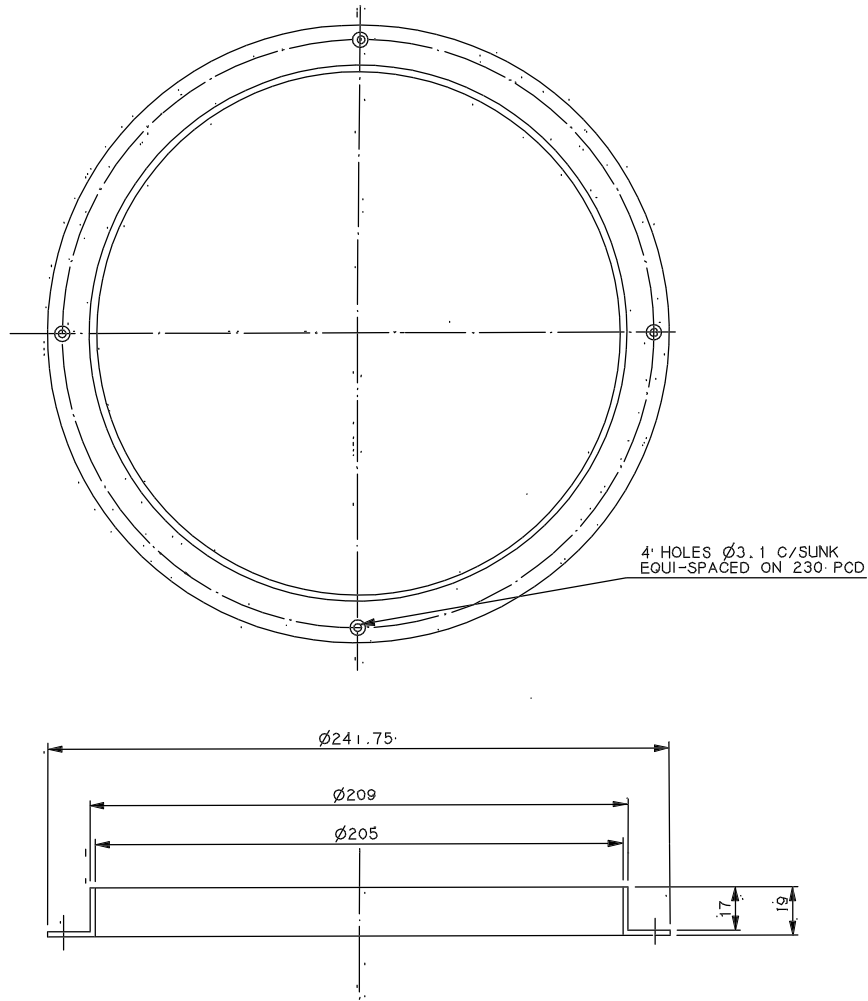
Tolerance (Unless otherwise stated)
 X +/-
 X.X +/-
 X.XX +/-

Material	Finish	Drwg. No.	No. Req.	Used on

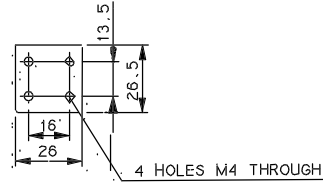
Dimns. in m.m. Scale
 ROYAL GREENWICH OBSERVATORY
 HERSTMONCEUX CASTLE
 HAILSHAM SUSSEX

THIRD ANGLE PROJECTION
 Title: 4.2m ISIS/A&G AUXILIARY CALIBRATION.
 DETAIL'S

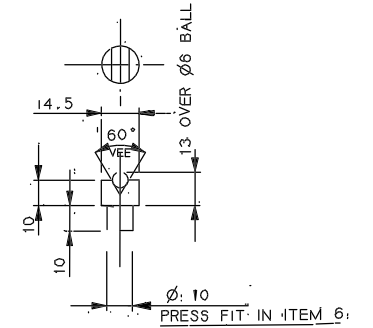
GA No.
 Drawing No.
 W FX 520, 526, 528



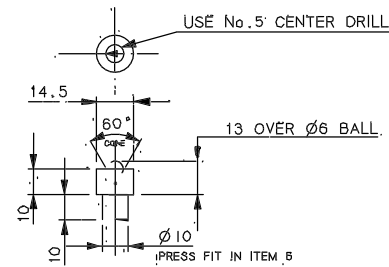
16		TITLE		DISC REF.	
LABYRINTH					
MATERIAL	SCALE	TOLERANCES			
AL. ALLOY	1:1	0.2			
FINISH	No. REQD. PER UNIT	X			
BL. ANODISE	ONE	X.X			
G.A. No.	DRAWING No.	RGO		W FX 529	



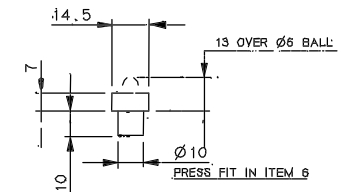
15		TITLE		DISC REF.	
PILLAR					
MATERIAL	SCALE	TOLERANCES			
AL. ALLOY	1:1	0.2			
FINISH	No. REQD. PER UNIT	X			
BL. ANODISE	FOUR	X.X			
G.A. No.	DRAWING No.	RGO		W FX 533	



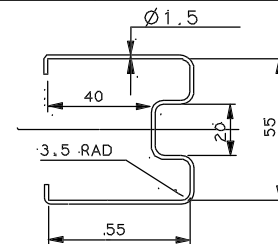
18		TITLE		DISC REF.	
KINEMATIC MOUNT (A)					
MATERIAL	SCALE	TOLERANCES			
E N 57	1:1	0.2			
FINISH	No. REQD. PER UNIT	X			
	ONE	X.X			
G.A. No.	DRAWING No.	RGO		W FX 533	



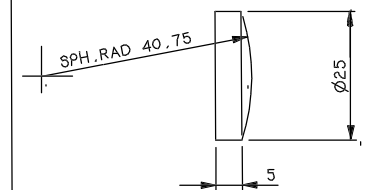
19		TITLE		DISC REF.	
KINEMATIC MOUNT (B)					
MATERIAL	SCALE	TOLERANCES			
E N 57	1:1	0.2			
FINISH	No. REQD. PER UNIT	X			
	ONE	X.X			
G.A. No.	DRAWING No.	RGO		W FX 533	



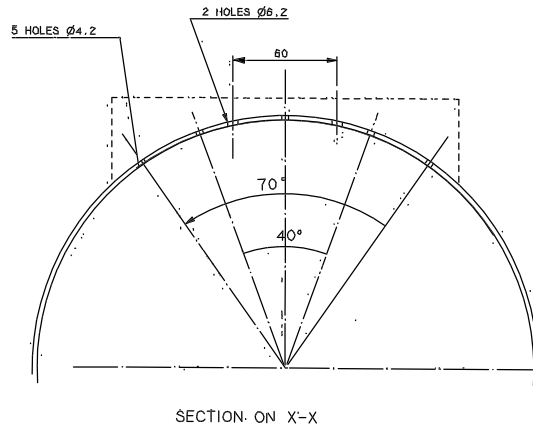
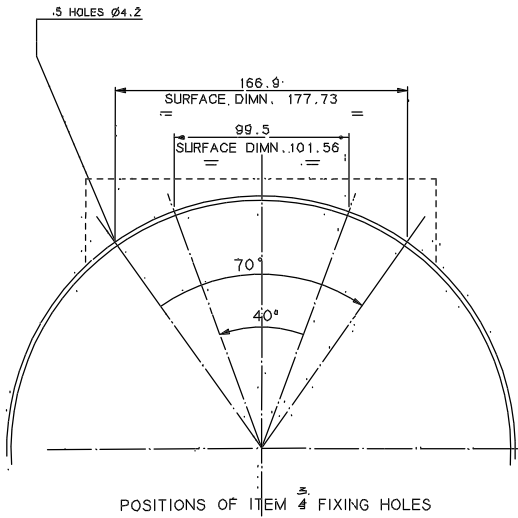
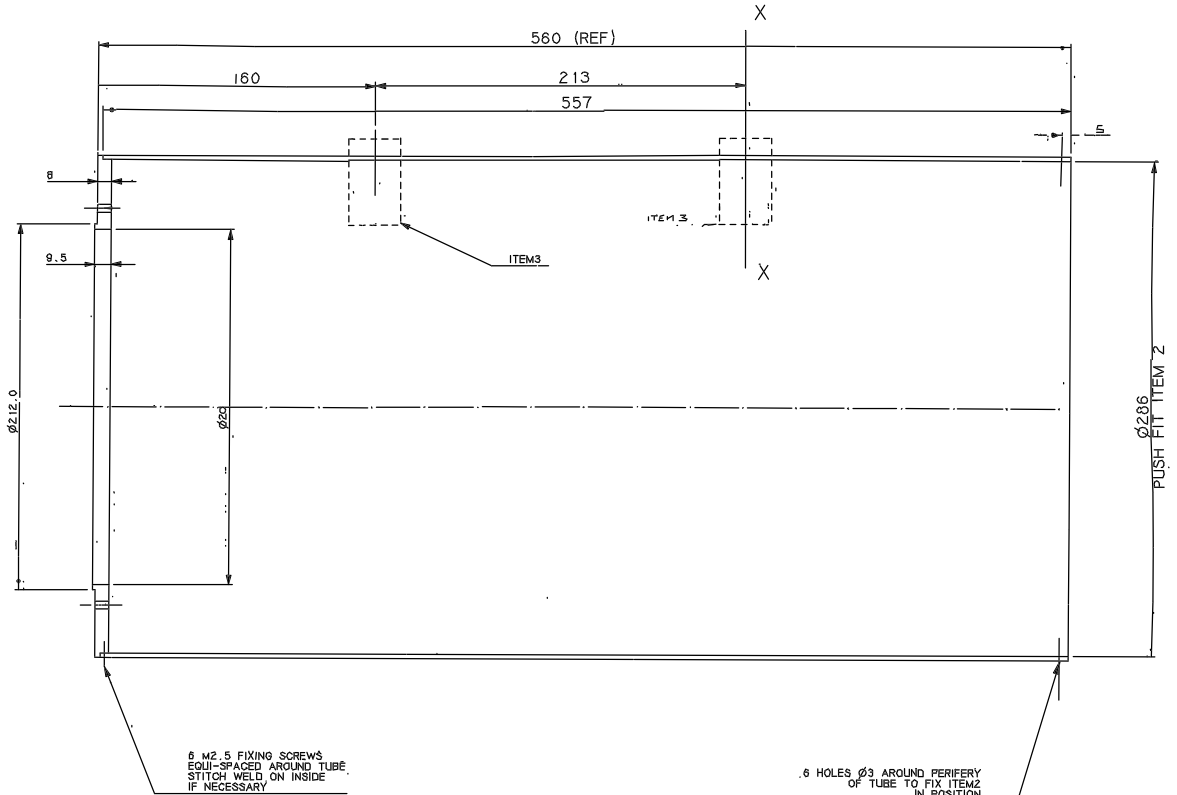
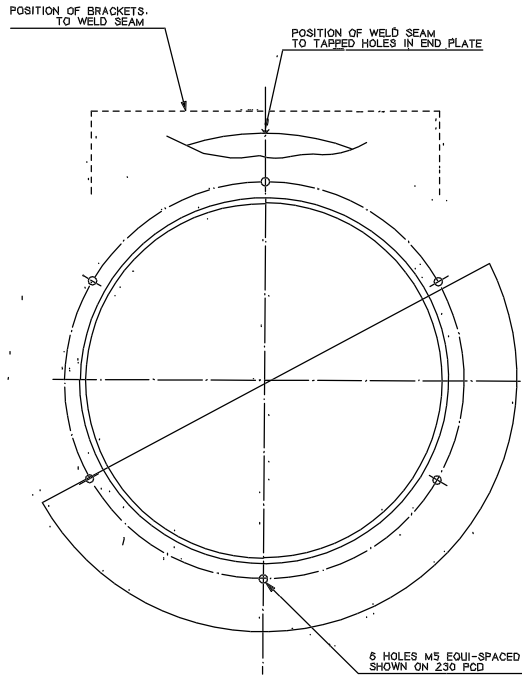
20		TITLE		DISC REF.	
KINEMATIC MOUNT (C)					
MATERIAL	SCALE	TOLERANCES			
E N 57	1:1	0.2			
FINISH	No. REQD. PER UNIT	X			
	ONE	X.X			
G.A. No.	DRAWING No.	RGO		W FX 533	



14		TITLE		DISC REF.	
CLIP					
MATERIAL	SCALE	TOLERANCES			
SPRING STEEL	1:1	0.5			
FINISH	No. REQD. PER UNIT	X			
	ONE	X.X			
G.A. No.	DRAWING No.	RGO		W FX 533	



17		TITLE		DISC REF.	
SECONDARY MIRROR					
MATERIAL	SCALE	TOLERANCES			
ALUMINISE	2:1	X			
	ONE	X.X			
G.A. No.	DRAWING No.	RGO		W FX 533	



6 HOLES Ø3 AROUND PERIFERY OF TUBE TO FIX ITEM 2 IN POSITION
ORIENTATION NOT IMPORTANT

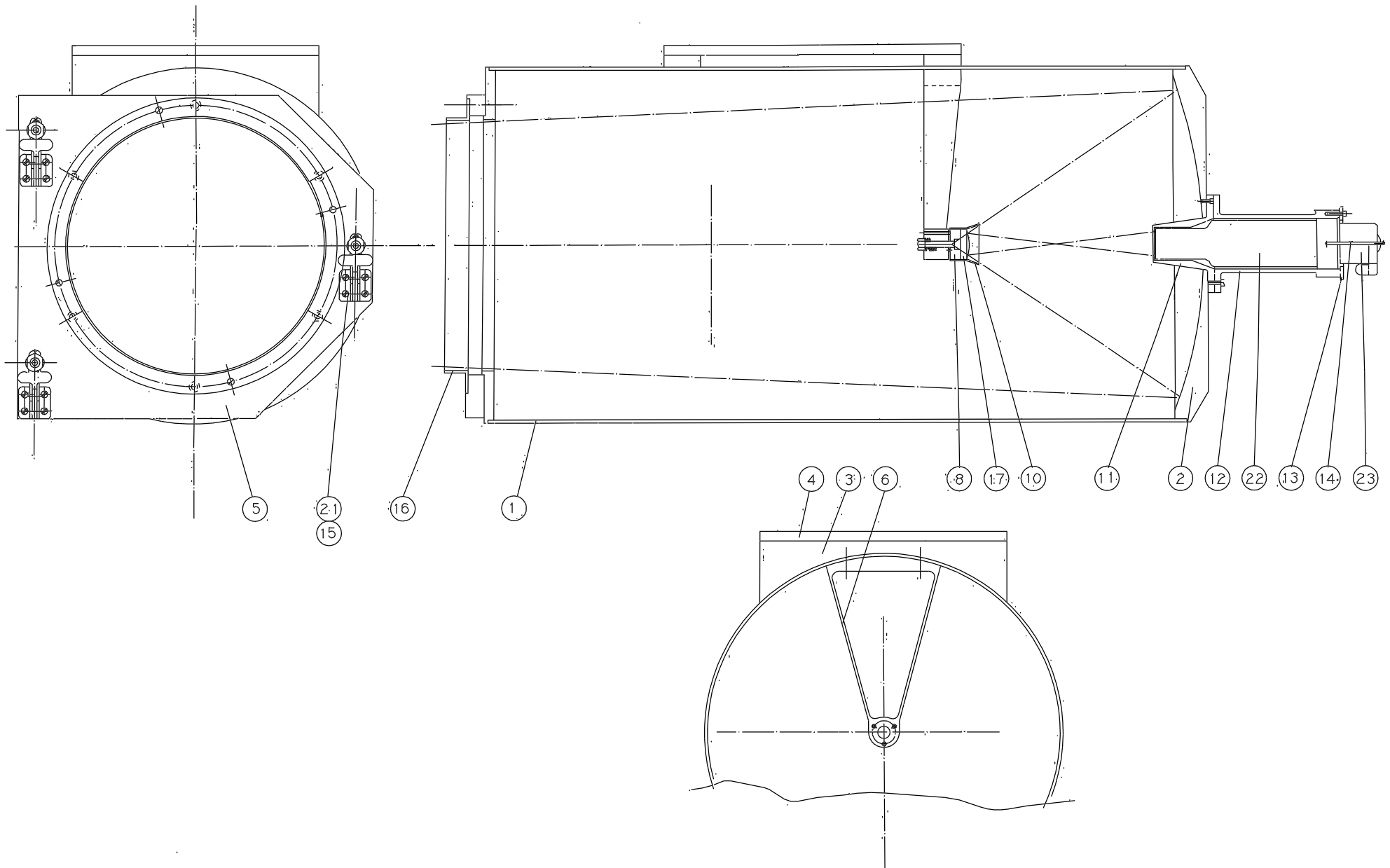
6 M2.5 FIXING SCREWS EQUI-SPACED AROUND TUBE. STITCH WELD ON INSIDE IF NECESSARY

NOTE: BLACK ANODISE THEN PAINT EXTERNAL SURFACE MAGNOLIA TO BS 4800 08B.15

								TOLERANCES UNLESS OTHERWISE STATED		MATERIAL		DIM IN mm		SCALE		THIRD ANGLE PROJECTION		G.A. NO.			
								AL. ALLOY		ONE		ROYAL GREENWICH OBSERVATORY				4.2m ISIS/AGS AUXILIARY CALIBRATION		CAD NAME FIBODAL		DRG NO.	
								FINISH		DRG NO.		NO. REV		HERSTMONCEUX CASTLE		EAST SUSSEX				V. FX 516	
								SEE NOTE		USED ON						CALIBRATION TUBE					
ISSUE	MOD. NO.	DATE	DRAWN BY	ISSUE	MOD. NO.	DATE	DRAWN BY	AUG 89		BTH											

DRG NO.

V



								TOLERANCES (UNLESS OTHERWISE STATED)		MATERIAL		DIM IN MM		SCALE		THIRD ANGLE PROJECTION		G.A. NO.	
								X	✓/-							4.2m ISIS/A&G SYSTEM		CAD NAME AUXCAL	
								X.X	✓/-							AUXILIARY CALIBRATION ASSEMBLY		DRG NO.	
								X.XX	✓/-									V/FX/SIS	
ISSUE	MOD. NO.	DATE	DRAWN BY	ISSUE	MOD. NO.	DATE	DRAWN BY	FINISH		DRG NO.	NO REQ	USED ON		ROYAL GREENWICH OBSERVATORY HERSTMONCEUX CASTLE, HAILSHAM EAST SUSSEX					
						14/02/05	BTH												