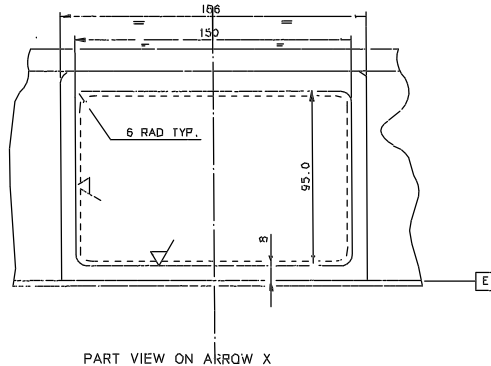
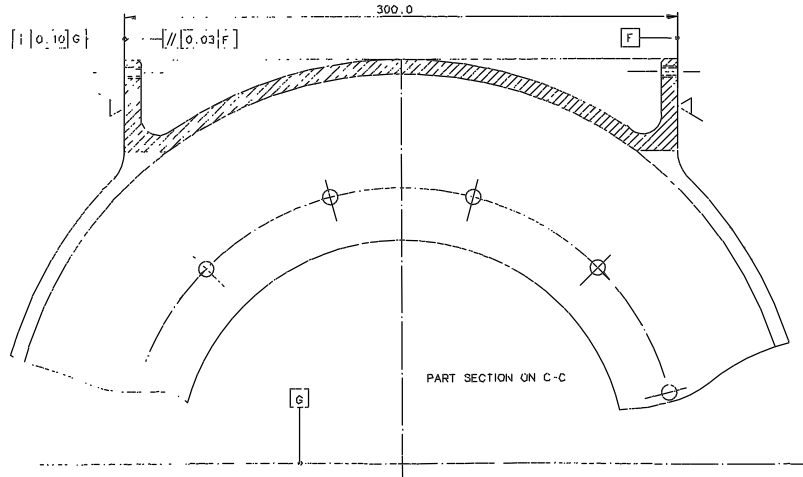
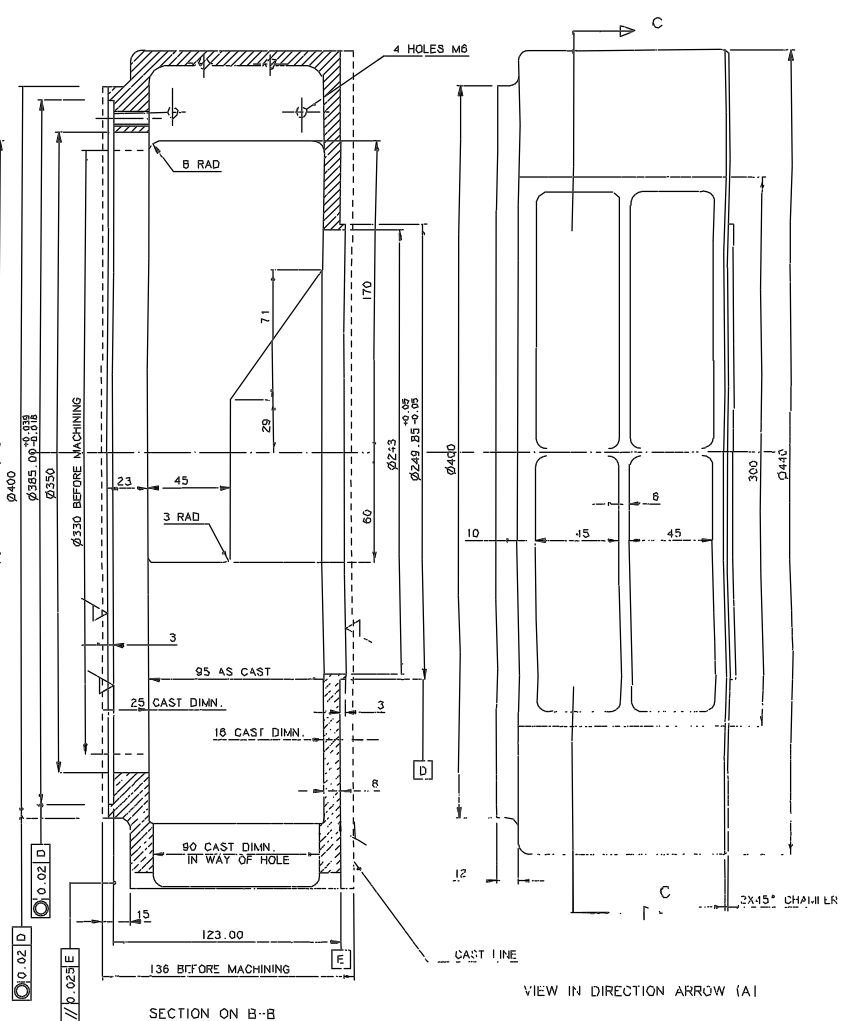
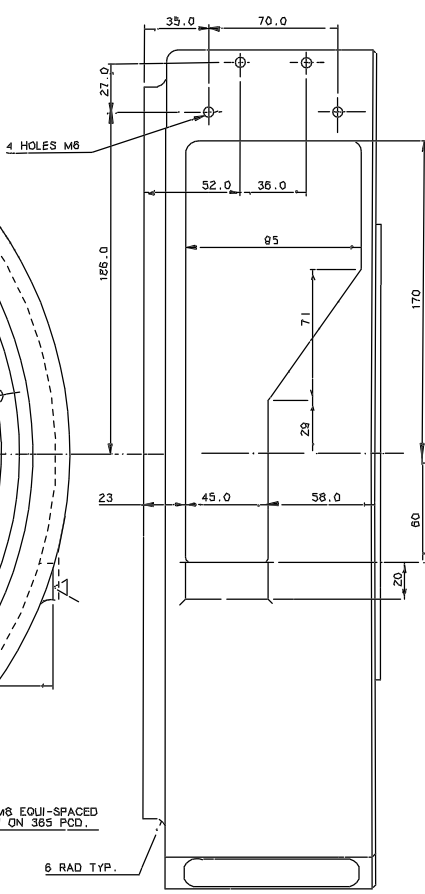
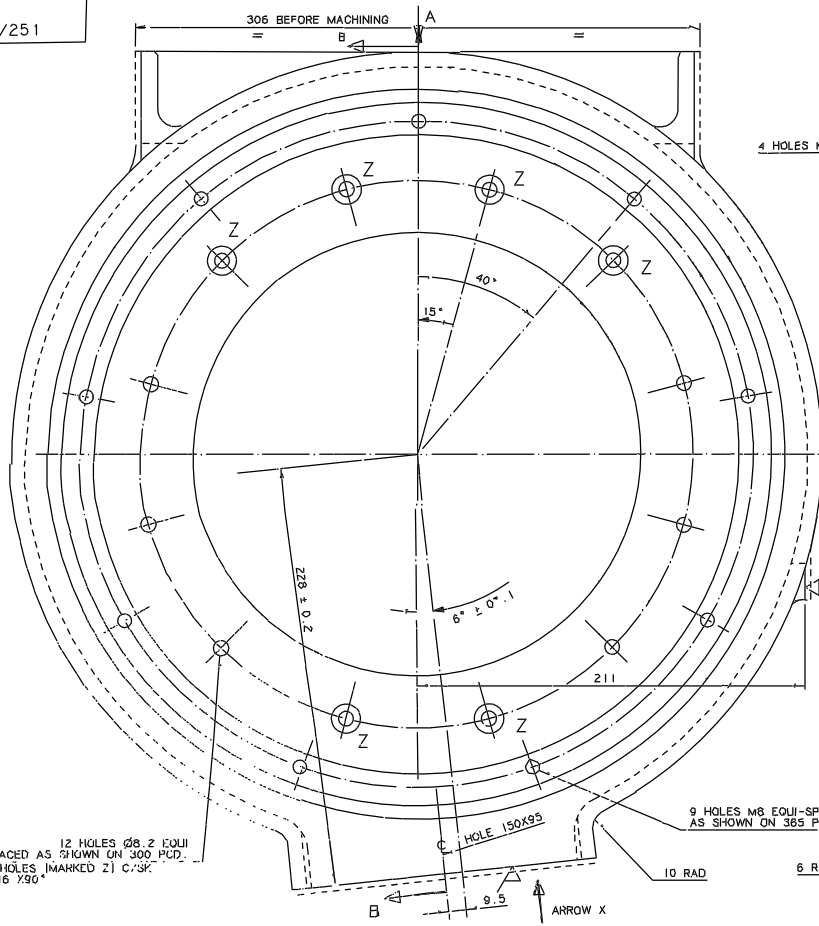


DRG NO.
V /FZ/251



TOLERANCES (UNLESS OTHERWISE STATED)				MATERIAL		DIM IN MM		SCALE FULL SIZE		THIRD ANGLE PROJECTION		G.A. NO.	
X	±	0.5		SPHEROIDAL GRAPHITE CAST IRON (MEPHANITE)		ONE		ROYAL GREENWICH OBSERVATORY HERSTMONCEUX CASTLE HAILSHAM EAST SUSSEX		TITLE		G.A. NO.	
XX	±	0.1		FINISH		DRG NO. NO REF USED ON		CASTING & MACHINING DETAIL		CAD NAME		DRG NO.	
XXX	±	0.05		NONE						PIGBACK		V /FZ/251	
ISSUE	MOD. NO.	DATE	DRAWN BY	ISSUE	MOD. NO.	DATE	DRAWN BY						
				JAN90	BTH								

DRAWING NUMBER	No. of Sheets	G.A. Item No.	DRAWING TITLE OR COMPONENT NAME	No. of	MATERIAL STOCK OR ORDER No. AND DATE	REMARKS	ISSUE DATE	ISSUED TO	FINISH DATE
V/FZ/250			ASSY MAIN FILTER SLIDES						
V/FZ/251		1	MAIN BEARING CASTING	1					
W/FZ/252		2	SUPPORT ARM	2					
		3							
W/FZ/254/1		4	LEAD SCREW	2					
W/FZ/254/2		5	FILTER MOUNTING RAIL (UPPER)	1					
V/FZ/255/1		6	BEARING PLATE	1					
V/FZ/255/2		7	MOTOR PLATE	1					
V/FZ/255/3		8	LEAD SCREW BEARING PLATE	1					
V/FZ/255/4		9	CARRIAGE PLATE (UPPER)	1					
V/FZ/255/5		10	CARRIAGE PLATE (LOWER)	1					
W/FZ/256/1		11	UPPER PLATE	1					
W/FZ/256/2		12	LOWER PLATE	1					
W/FZ/257/1		13	UPPER CELL	5					
W/FZ/257/2		14	LOWER CELL	5					
W/FZ/257/3		15	FILTER MOUNTING RAIL (LOWER)	1					
W/FZ/258/1		16	BRACKET (UPPER)	2					
W/FZ/258/2		17	BRACKET (LOWER)	2					
W/FZ/262/4		18	TOP LATCH	1					
W/FZ/262/5		19	LOWER LATCH	1					
W/FZ/258/5		20	DISTANCE PIECE	2					
W/FZ/259/1		21	GEARING KEEP	1					
W/FZ/259/2		22	SPRING	2					
W/FZ/259/3		23	MECHANICAL STOP	4					
W/FZ/259/4		24	HONEYWELL SWITCH BKT.	2					
W/FZ/259/5		25	HONEYWELL SENSOR BKT.	2					
W/FZ/259/6		26	NUT (UPPER SCREW)	1					
W/FZ/260/1		27	BEZEL	10					
W/FZ/260/2		28	BRACKET (UPPER NUT FIXING)	1					
W/FZ/260/3		29	BRACKET (LOWER NUT FIXING)	1					
W/FZ/260/4		30	NUT (LOWER SCREW)	1					
W/FZ/261/1		31	COVER PLATE	1					
W/FZ/261/2		32	MG INSERT	4					
W/FZ/261/3		33	MG INSERT	10					
W/FZ/		34							
		35							

JOB TITLE

ASSY MAIN FILTER SLIDES

ASSY DRG. No.

V/FZ/250

SHEET No.

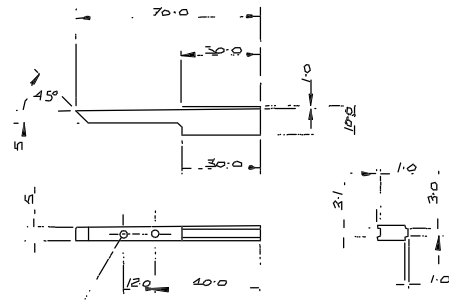
1 of 2

DRAWN BY BTH

DATE JAN 87

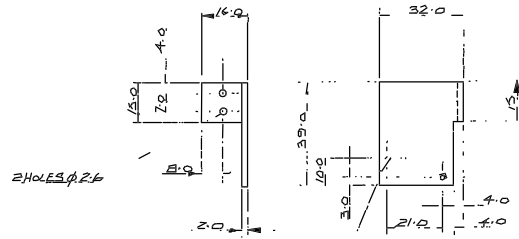
ROYAL GREENWICH OBSERVATORY, HERSTMONCEUX CASTLE, HAILSHAM, SUSSEX





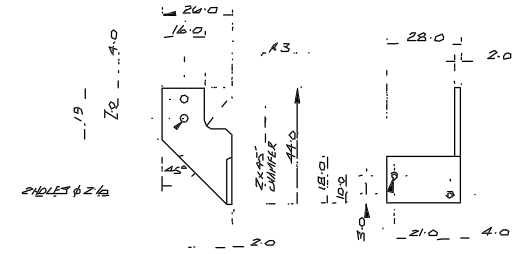
2 HOLES $\phi 2.6$

54 BAR CODE DIST. PIECE			
MATERIAL	SCALE	TOLERANCES	
AL ALLOY	1:1	X	± 0.1
FINISH	NO REQ' PER UNIT	XX	
BL ANODISE	5	XXX	
G.A. No	DRAWING No		
V/FZ/250	R.G.O. W/FZ/263/1		



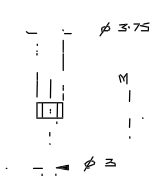
2 HOLES $\phi 1.2$

55 BRACKET (BAR CODE HEAD)			
MATERIAL	SCALE	TOLERANCES	
AL ALLOY	1:1	X	± 0.2
FINISH	NO REQ' PER UNIT	XX	± 0.1
BL ANODISE	1	XXX	
G.A. No	DRAWING No		
V/FZ/250	R.G.O. W/FZ/263/2		

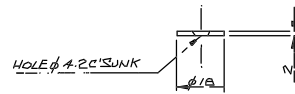


2 HOLES $\phi 2.1$

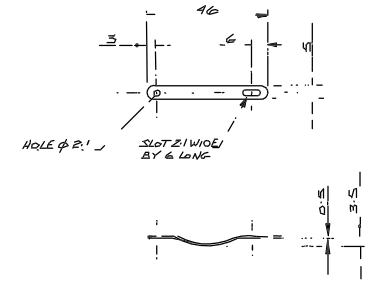
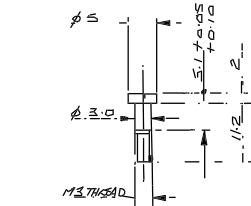
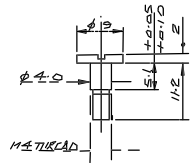
56 BRACKET (BAR CODE HEAD)			
MATERIAL	SCALE	TOLERANCES	
AL ALLOY	1:1	X	± 0.2
FINISH	NO REQ' PER UNIT	XX	± 0.1
BL ANODISE	1	XXX	
G.A. No	DRAWING No		
V/FZ/250	R.G.O. W/FZ/263/3		



MANUFACTURE FROM STAND OFFS OBTAINABLE FROM RGD ELECTRONICS.



58 WASHER			
MATERIAL	SCALE	TOLERANCES	
M.S.	1:1	X	± 0.2
FINISH	NO REQ' PER UNIT	XX	
BL Ni	2	XXX	
G.A. No	DRAWING No		
V/FZ/250	R.G.O. W/FZ/263/5		



57 DISTANCE PIECE			
MATERIAL	SCALE	TOLERANCES	
BRASS	2:1	X	
FINISH	NO REQ' PER UNIT	XX	
BL NICKEL	4	XXX	
G.A. No	DRAWING No		
V/FZ/250	R.G.O. W/FZ/263/4		

59 SHOULDER SCREW			
MATERIAL	SCALE	TOLERANCES	
M.S.	2:1	X	± 0.2
FINISH	NO REQ' PER UNIT	XX	± 0.1
BL NICKEL	1	XXX	
G.A. No	DRAWING No		
V/FZ/250	R.G.O. W/FZ/263/6		

60 SHOULDER SCREW			
MATERIAL	SCALE	TOLERANCES	
M.S.	2:1	X	± 0.2
FINISH	NO REQ' PER UNIT	XX	± 0.1
BL NICKEL	1	XXX	
G.A. No	DRAWING No		
V/FZ/250	R.G.O. W/FZ/263/7		

61 SPRING			
MATERIAL	SCALE	TOLERANCES	
BERYLLIUM COPPER	1:1	X	± 0.2
FINISH	NO REQ' PER UNIT	XX	± 0.1
BL NICKEL	4	XXX	
G.A. No	DRAWING No		
V/FZ/250	R.G.O. W/FZ/263/8		

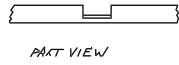
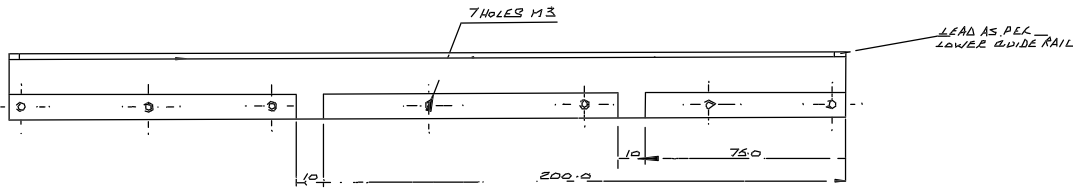
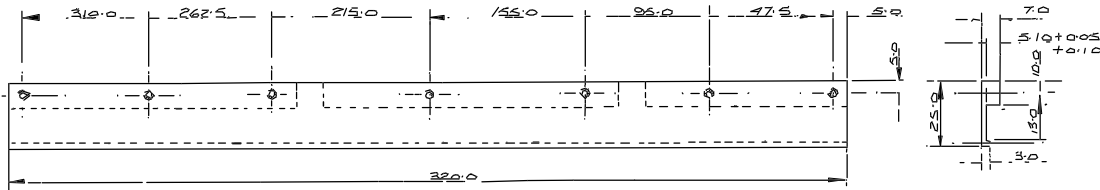
Issue	Mod. No.	Date	Drawn By	Issue	Mod. No.	Date	Drawn By

Tolerances (Unless otherwise stated)
X \pm
XX +
XXX \pm

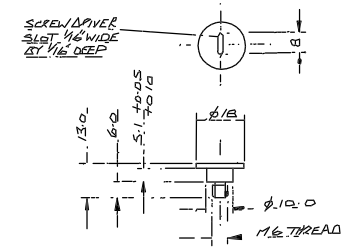
Material	Finish	Drng. No.	No. Req.	Used on

Dimns in m.m. Scale
ROYAL GREENWICH OBSERVATORY,
HERSTMONCEUX CASTLE,
HAILSHAM SUSSEX.

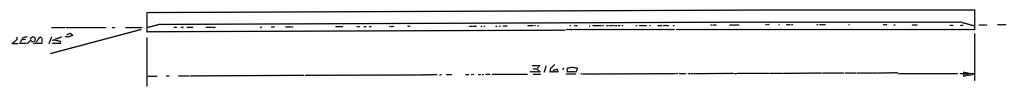
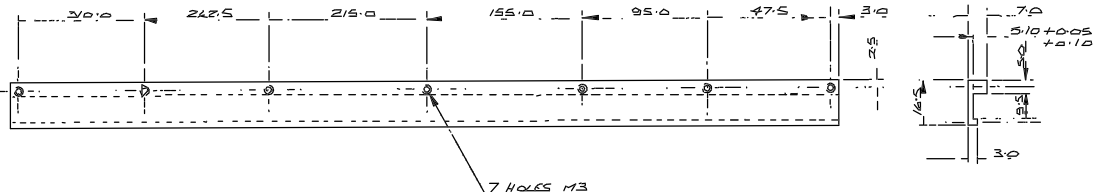
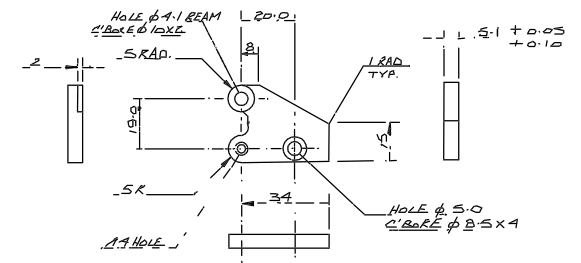
THIRD ANGLE PROJECTION		Title	G.A. No.
		1-24 A3G UNIT MAIN FILTER SLIDES DETAILS	W/FZ/263/1-



51 UPPER GUIDE RAIL		
MATERIAL	SCALE	TOLERANCES UNLESS STATED
BRASS	1:1	X ± 0.2
FINISH	NO REQ PER UNIT	XX ± 0.1
BL. NICKEL	1	XXX
G.A. No	DRAWING No	
V/FZ/250	R.G.O. W/FZ/262/1	

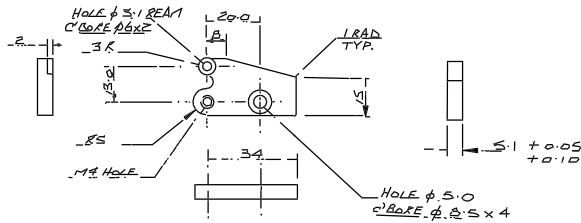


52 SHOULDER SCREW		
MATERIAL	SCALE	TOLERANCES UNLESS STATED
M.S.	1:1	X ± 0.2
FINISH	NO REQ PER UNIT	XX ± 0.1
BL. NICKEL	2	
G.A. No	DRAWING No	
V/FZ/250	R.G.O. W/FZ/262/2	



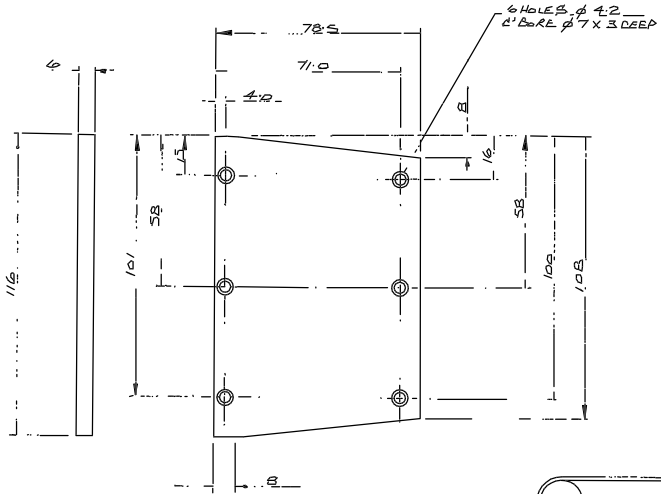
53 LOWER GUIDE RAIL		
MATERIAL	SCALE	TOLERANCES UNLESS STATED
BRASS	1:1	X ± 0.2
FINISH	NO REQ PER UNIT	XX ± 0.1
BL. NICKEL	1	XXX
G.A. No	DRAWING No	
V/FZ/250	R.G.O. W/FZ/262/3	

18 TOP LATCH		
MATERIAL	SCALE	TOLERANCES UNLESS STATED
M.S.	1:1	X ± 0.2
FINISH	NO REQ PER UNIT	XX ± 0.1
BL. NICKEL	1	
G.A. No	DRAWING No	
V/FZ/250	R.G.O. W/FZ/262/4	

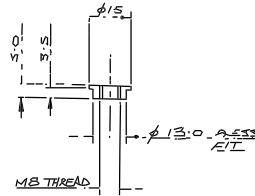


19 LOWER LATCH		
MATERIAL	SCALE	TOLERANCES UNLESS STATED
M.S.	1:1	X ± 0.2
FINISH	NO REQ PER UNIT	XX ± 0.1
BL. NICKEL	1	
G.A. No	DRAWING No	
V/FZ/250	R.G.O. W/FZ/262/5	

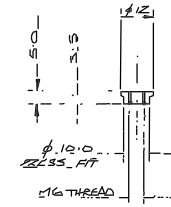
Issue	Mod. No.	Date	Drawn By	Issued	Mod. No.	Date	Drawn By	Tolerances (Unless otherwise stated)	Material	Finish	Dim. in mm.	Scale	Title	G.A. No.	Drawing No.
								X ± 0.2 XX ± 0.1 XXX					THIRD ANGLE PROJECTION ±21 AX&B MAIN FILTER SLIDES DETAILS		W/FZ/262/1-5



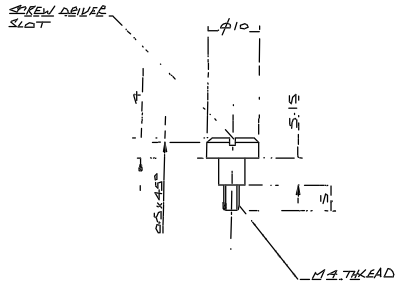
TITLE		
31	COVER PLATE	
MATERIAL	SCALE	TOLERANCES
AL ALLOY	1:1	X
FINISH	NO REQS PER UNIT	XX ± 0.1
BL ANODISE	1	XXX
GA No	DRAWING No	
V/FZ/250	R.G.O. W/FZ/261/1	



TITLE		
32	MB INSERT	
MATERIAL	SCALE	TOLERANCES
ST. STEEL	1:1	X
FINISH	NO REQS PER UNIT	XX ± 0.1
	4	XXX
GA No	DRAWING No	
V/FZ/250	R.G.O. W/FZ/261/2	

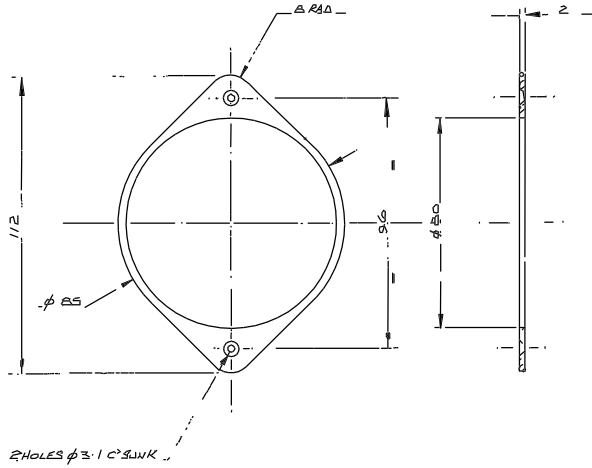


TITLE		
33	M6 INSERT	
MATERIAL	SCALE	TOLERANCES
ST. STEEL	1:1	X
FINISH	NO REQS PER UNIT	XX ± 0.1
	10	XXX
GA No	DRAWING No	
V/FZ/250	R.G.O. W/FZ/261/3	

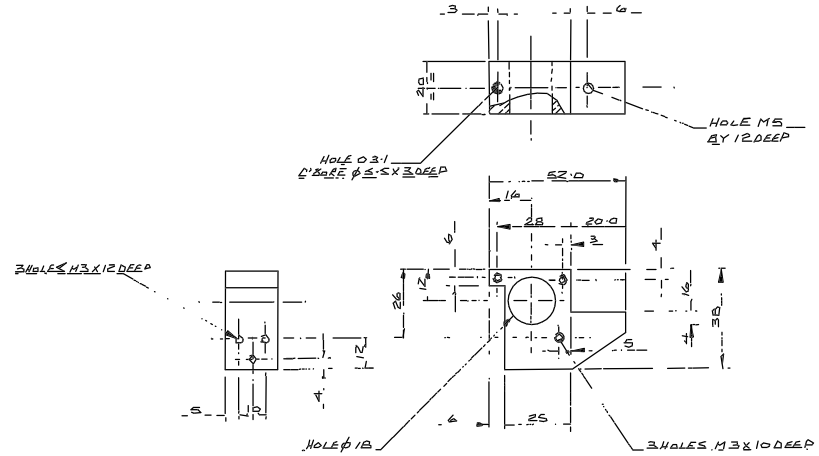


TITLE		
34	SCREW	
MATERIAL	SCALE	TOLERANCES
M.S	2:1	X
FINISH	NO REQ PER UNIT	XX ± 0.1
BLACKEN	1	XXX
GA No	DRAWING No	
V/FZ/250	R.G.O. W/FZ/261/4	

Issue	Mod. No.	Date	Drawn By	Issue	Mod. No.	Date	Drawn By	Tolerances (Unless otherwise stated)	Material	Dimns in m.m.	Scale	THIRD ANGLE PROJECTION	GA No.
								X XX XXX				1:2H A X B MAIN FITTED SIZES DETAILS	
													W/FZ/261/1-5

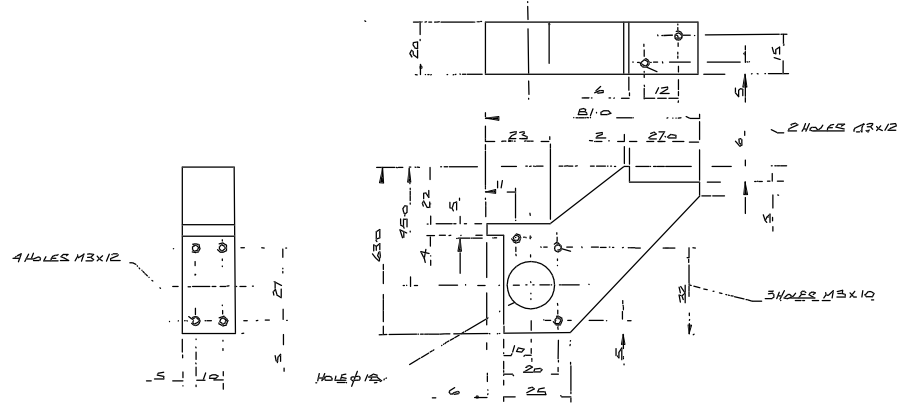


TITLE			
27	BEZEL		
MATERIAL	SCALE	TOLERANCES	
AL. ALLOY	1:1	y	
FINISH	NO RECD PER UNIT	XX ± 0.1	
BL. ANODISE	10	XXX	
G.A. No.	DRAWING No.		
V/FZ/250	R.G.O.	W/FZ/260/1	



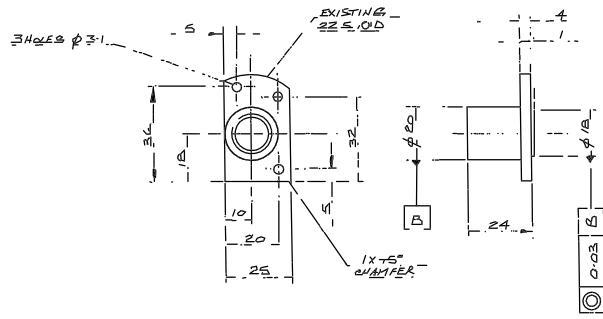
TITLE			
28	BRACKET UPPER NUT FIXING		
MATERIAL	SCALE	TOLERANCES	
AL. ALLOY	1:1	x	
FINISH	NO RECD PER UNIT	XX ± 0.1	
BL. ANODISE	10	XXX	
G.A. No.	DRAWING No.		
V/FZ/250	R.G.O.	W/FZ/260/2	

NOTE SIMILAR TO ITEM 16



TITLE			
29	BRACKET LOWER NUT FIXING		
MATERIAL	SCALE	TOLERANCES	
AL. ALLOY	1:1	x	
FINISH	NO RECD PER UNIT	XX ± 0.1	
BL. ANODISE	10	XXX	
G.A. No.	DRAWING No.		
V/FZ/250	R.G.O.	W/FZ/260/3	

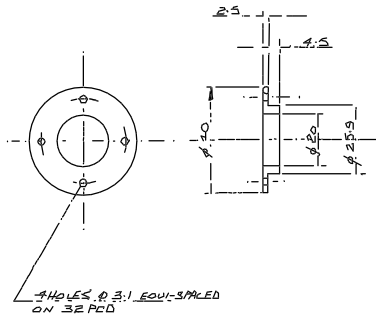
NOTE SIMILAR TO ITEM 17



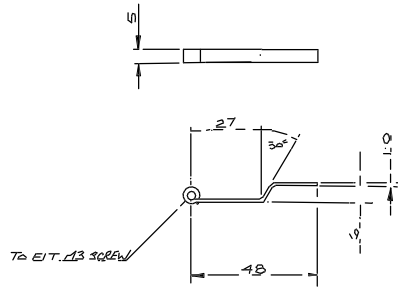
TITLE			
30	NUT LOWER SCREW		
MATERIAL	SCALE	TOLERANCES	
PH. BRONZE	1:1	x	
FINISH	NO RECD PER UNIT	XX	
G.A. No.	DRAWING No.		
V/FZ/250	R.G.O.	W/FZ/260/4	

SEE ALSO DRG. W/FZ/254/1

Issue		Mod. No.		Date		Drawn By		Material		Dim in in. m.		Scale		Title		G.A. No.																																																
<table border="1"> <tr> <td>Tolerances (unless otherwise stated)</td> <td></td> <td></td> <td></td> <td></td> <td></td> <td></td> <td></td> </tr> <tr> <td>X</td> <td>±</td> <td></td> <td></td> <td></td> <td></td> <td></td> <td></td> </tr> <tr> <td>XX</td> <td>±</td> <td></td> <td></td> <td></td> <td></td> <td></td> <td></td> </tr> <tr> <td>XXX</td> <td>±</td> <td></td> <td></td> <td></td> <td></td> <td></td> <td></td> </tr> </table>								Tolerances (unless otherwise stated)								X	±							XX	±							XXX	±							<table border="1"> <tr> <td>Drawn By</td> <td>JAN 87</td> <td>BTL</td> </tr> </table>		Drawn By	JAN 87	BTL	<table border="1"> <tr> <td>Dim in in. m.</td> <td>Scale</td> </tr> <tr> <td></td> <td></td> </tr> </table>		Dim in in. m.	Scale			<table border="1"> <tr> <td>Title</td> <td>THIRD ANGLE PROJECTION</td> </tr> <tr> <td></td> <td>121 A & B MAIN FILTER SLIDES</td> </tr> <tr> <td></td> <td>DETAILS</td> </tr> </table>		Title	THIRD ANGLE PROJECTION		121 A & B MAIN FILTER SLIDES		DETAILS	<table border="1"> <tr> <td>G.A. No.</td> <td></td> </tr> <tr> <td>Drawn No.</td> <td>W/FZ/260/1-4</td> </tr> </table>		G.A. No.		Drawn No.	W/FZ/260/1-4
Tolerances (unless otherwise stated)																																																																
X	±																																																															
XX	±																																																															
XXX	±																																																															
Drawn By	JAN 87	BTL																																																														
Dim in in. m.	Scale																																																															
Title	THIRD ANGLE PROJECTION																																																															
	121 A & B MAIN FILTER SLIDES																																																															
	DETAILS																																																															
G.A. No.																																																																
Drawn No.	W/FZ/260/1-4																																																															

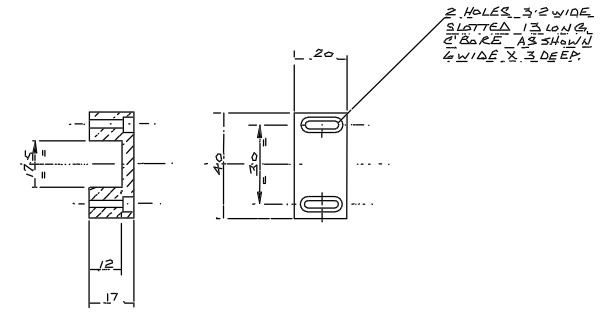


TITLE			
21	BEARING KEEP		
MATERIAL	SCALE	TOLERANCES	
BRASS	1:1	X	XX ± 0.1
FINISH	NO REQ' PER UNIT	XXX	
BL. NICKEL	2		
G.A. No.	DRAWING No.		
V/FZ/250	R.G.O. W/FZ/259/1		

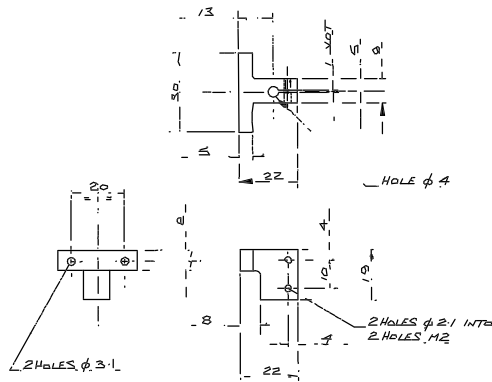


delete

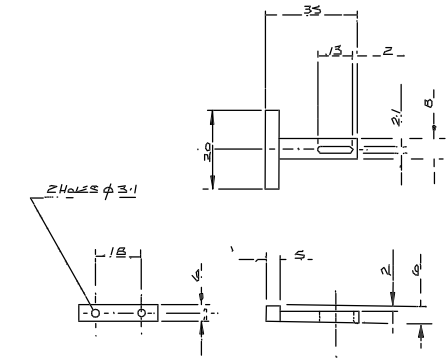
TITLE			
22	SPRING		
MATERIAL	SCALE	TOLERANCES	
BERYLLIUM COPPER	1:1	X	XX ± 0.25
FINISH	NO REQ' PER UNIT	XXX	
2			
G.A. No.	DRAWING No.		
V/FZ/250	R.G.O. W/FZ/259/2		



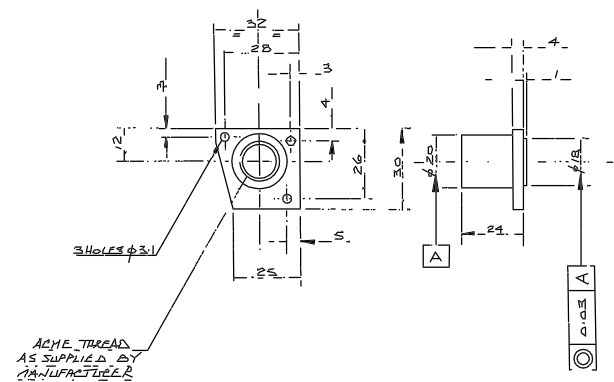
TITLE			
23	MECHANICAL STOP		
MATERIAL	SCALE	TOLERANCES	
BRASS	1:1	X	XX ± 0.1
FINISH	NO REQ' PER UNIT	XXX	
AL. NICKEL	4		
G.A. No.	DRAWING No.		
V/FZ/250	R.G.O. W/FZ/259/3		



TITLE			
24	HONEYWELL SWITCH BKT.		
MATERIAL	SCALE	TOLERANCES	
AL. ALLOY	1:1	X	XX ± 0.1
FINISH	NO REQ' PER UNIT	XXX	
BL. ANODISE	2		
G.A. No.	DRAWING No.		
V/FZ/250	R.G.O. W/FZ/259/4		



TITLE			
25	HONEYWELL SENSOR BKT.		
MATERIAL	SCALE	TOLERANCES	
AL. ALLOY	1:1	X	XX ± 0.1
FINISH	NO REQ' PER UNIT	XXX	
BL. ANODISE	2		
G.A. No.	DRAWING No.		
V/FZ/250	R.G.O. W/FZ/259/5		

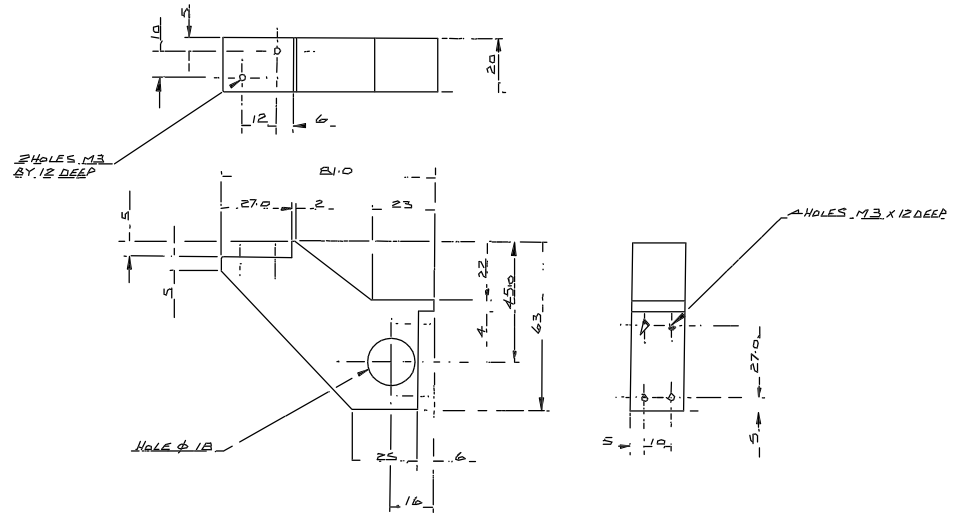
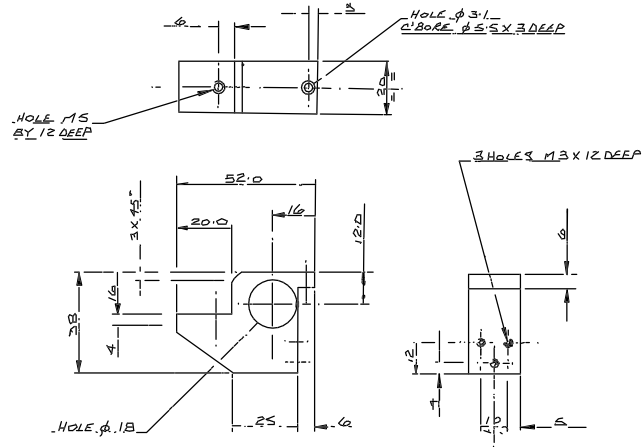


TITLE			
26	NUT (UPPER SCREW)		
MATERIAL	SCALE	TOLERANCES	
PH. BRONZE	1:1	X	XX ± 0.1
FINISH	NO REQ' PER UNIT	XXX	
V/FZ/250	R.G.O. W/FZ/259/6		

Tolerances (Unless otherwise stated)						Material		Dimens in m.m.		Scale		Title		G.A. No.	
X	+														
XX	+														
XXX	+														
Issue	Mod. No.	Date	Drawn By	Issue	Mod. No.	Date	Drawn By	Used on	Used on	Used on	Used on	Used on	Used on	Used on	Used on

THIRD ANGLE PROJECTION
4:2M ANG MAIN FILTER SLIDES
DETAILS

Drawing No. W/FZ/259/1-6

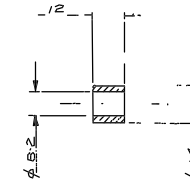
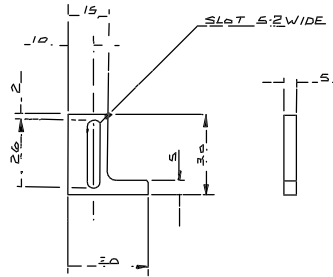
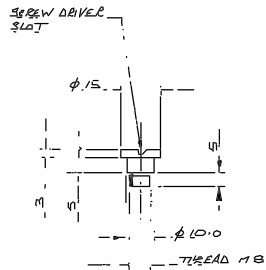


16 BRACKET (UPPER)

MATERIAL	SCALE	TOLERANCES
AL. ALLOY	1:1	X
FINISH	NO REQ ^d PER UNIT	XX ± 0.1
BL. ANODISE	2	XXX
G.A. No	DRAWING No	
V/FZ/250	R.G.O. W/FZ/258/1	

17 BRACKET (LOWER)

MATERIAL	SCALE	TOLERANCES
AL. ALLOY	1:1	X
FINISH	NO REQ ^d PER UNIT	XX ± 0.1
BL. ANODISE	2	XXX
G.A. No	DRAWING No	
V/FZ/250	R.G.O. W/FZ/258/2	



18 SHOULDER SCREW

MATERIAL	SCALE	TOLERANCES
STAINLESS STEEL	1:1	X
FINISH	NO REQ ^d PER UNIT	XX ± 0.1
	10	XXX
G.E. No	DRAWING No	
V/FZ/250	R.G.O. W/FZ/258/3	

19 LATCH

MATERIAL	SCALE	TOLERANCES
AL. ALLOY	1:1	X ± 0.2
FINISH	NO REQ ^d PER UNIT	XX
BL. ANODISE	2	XXX
G.A. No	DRAWING No	
V/FZ/250	R.G.O. W/FZ/258/4	

20 DISTANCE PIECE

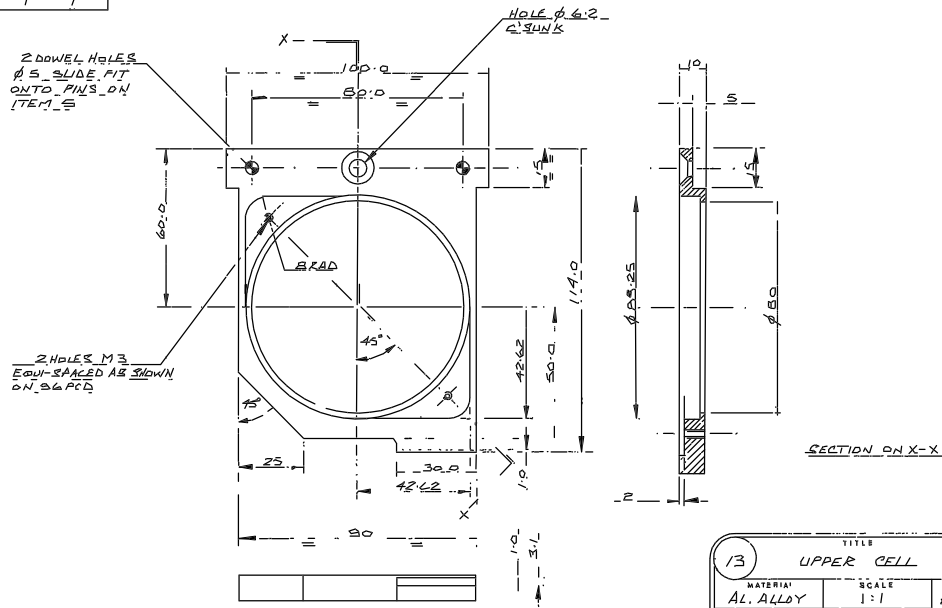
MATERIAL	SCALE	TOLERANCES
BRASS	1:1	X ± 0.2
FINISH	NO REQ ^d PER UNIT	XX
BL. NICKEL	2	XXX
G.A. No	DRAWING No	
V/FZ/250	R.G.O. W/FZ/258/5	

Tolerances (Unless otherwise stated)				Material		Dimms in m.m.		Scale		Title		G.A. No.	
X													
XX													
XXX													

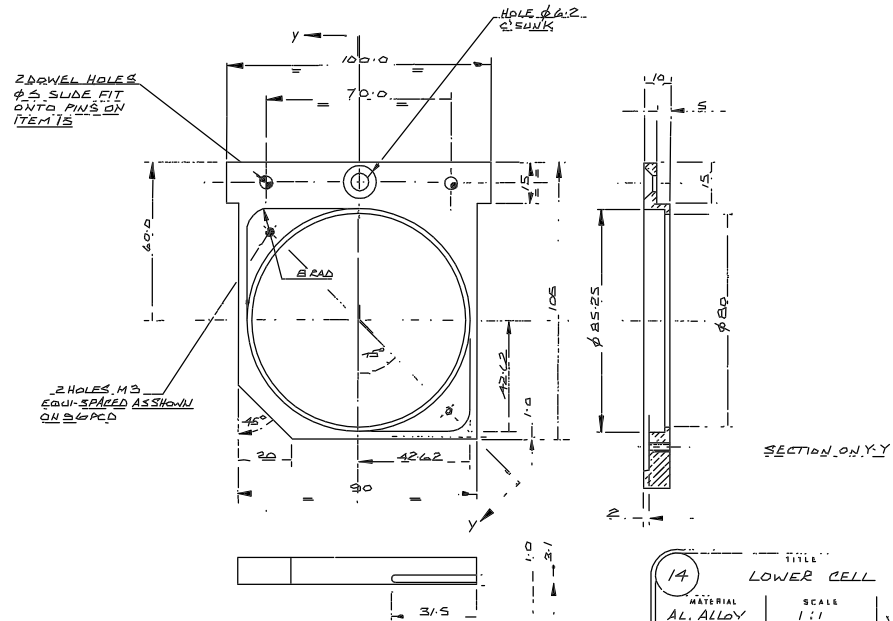
ROYAL GREENWICH OBSERVATORY,
HERSTMONCEUX CASTLE, HAILSHAM, SUSSEX.

THIRD ANGLE PROJECTION
2:1 MAIN FILTER SLIDES
DETAILS

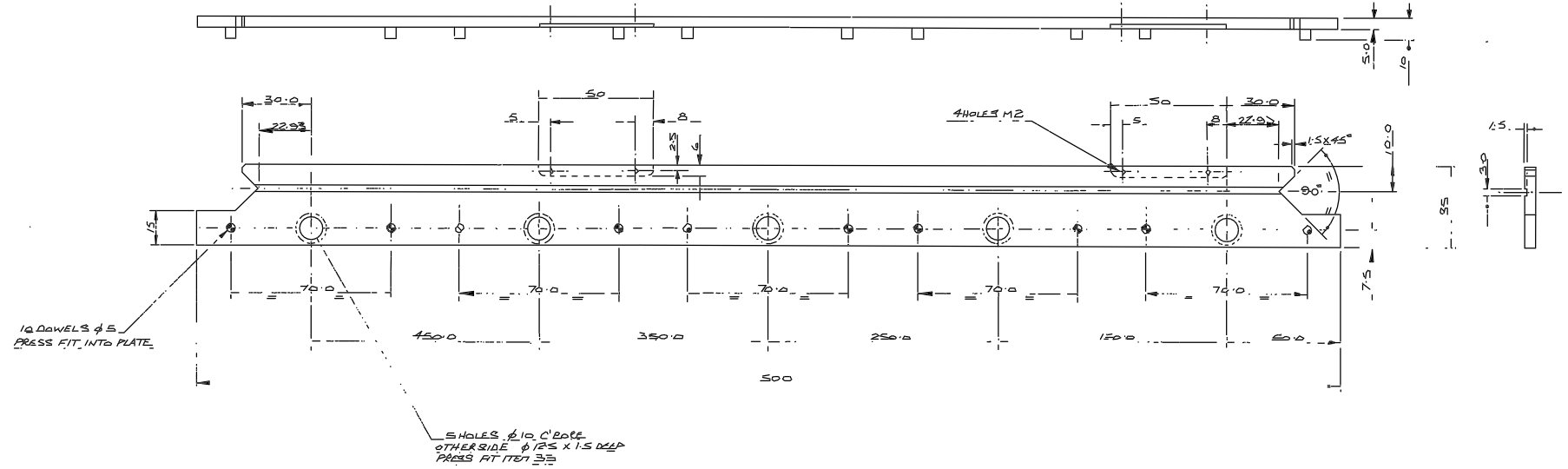
W/FZ/258/1-5



TITLE			
13 UPPER CELL			
MATERIAL	SCALE	TOLERANCES	
AL. ALLOY	1:1	X	± 0.1
FINISH	NO REQ. PER UNIT	XX	± 0.1
BL. ANODISE	S	XXX	
G.A. No.	DRAWING No.		
V/FZ/250	R.G.O. W/FZ/257/1		

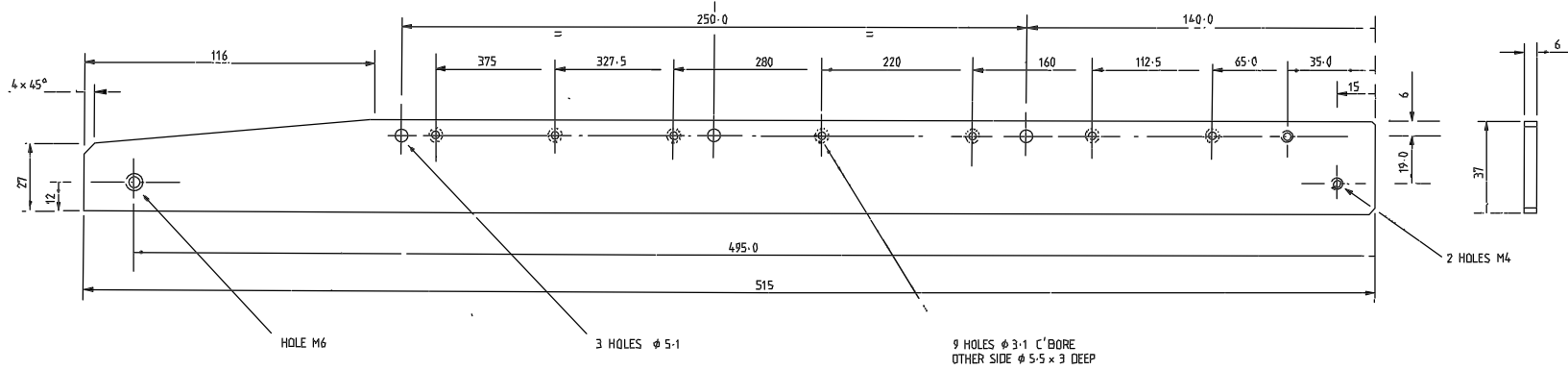


TITLE			
14 LOWER CELL			
MATERIAL	SCALE	TOLERANCES	
AL. ALLOY	1:1	X	± 0.1
FIN. SH	NO REQ. PER UNIT	XX	± 0.1
BL. ANODISE	S	XXX	
G.A. No.	DRAWING No.		
V/FZ/250	R.G.O. W/FZ/257/2		

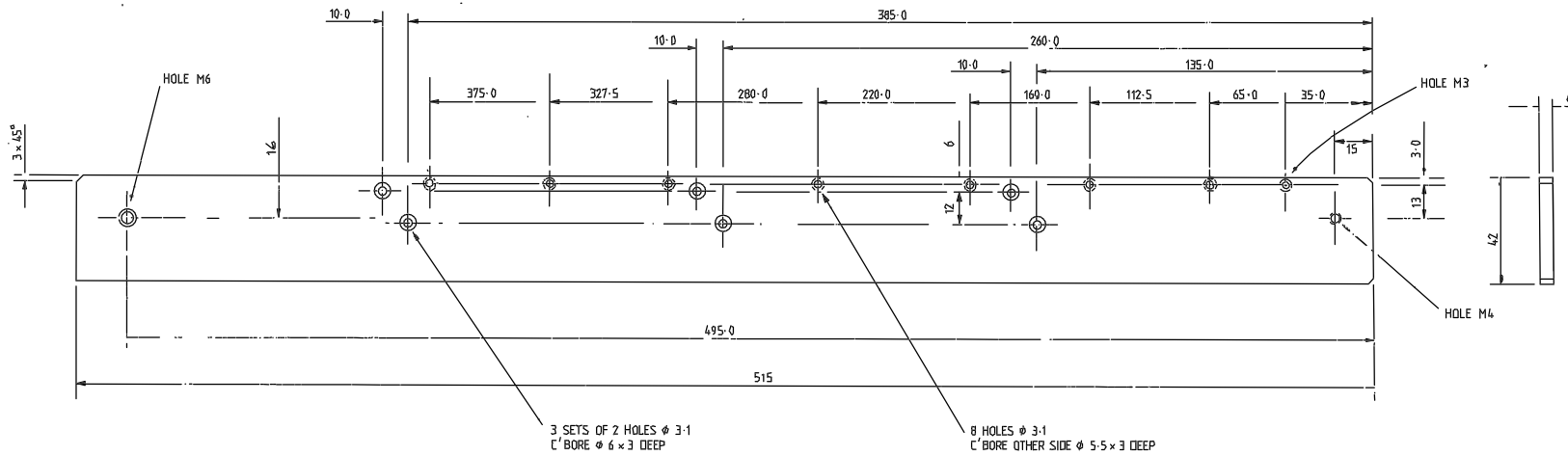


TITLE			
15 FILTER MOUNTING RAIL (LOWER)			
MATERIAL	SCALE	TOLERANCES	
AL. ALLOY	1:1	X	± 0.2
FINISH	NO REQ. PER UNIT	XX	± 0.1
BL. ANODISE		XXX	
G.A. No.	DRAWING No.		
V/FZ/250	R.G.O. W/FZ/257/3		

				Tolerances (Unless otherwise stated)				Material		Dimms in m.		Scale		THIRD ANGLE PROJECTION		G.A. No.	
				X XX XXX				Finish		Drg. No.		No Req.		ROYAL GREENWICH OBSERVATORY, HERSTMONCEUX CASTLE, HAILSHAM SUSSEX.		Title	
Issue	Mod. No.	Date	Drawn By	Issue	Mod. No.	Date	Drawn By	Used on						4-20 A+B MAIN FILTER SLIDES		Drawing No.	
														DETAILS		W/FZ/257/1-3	

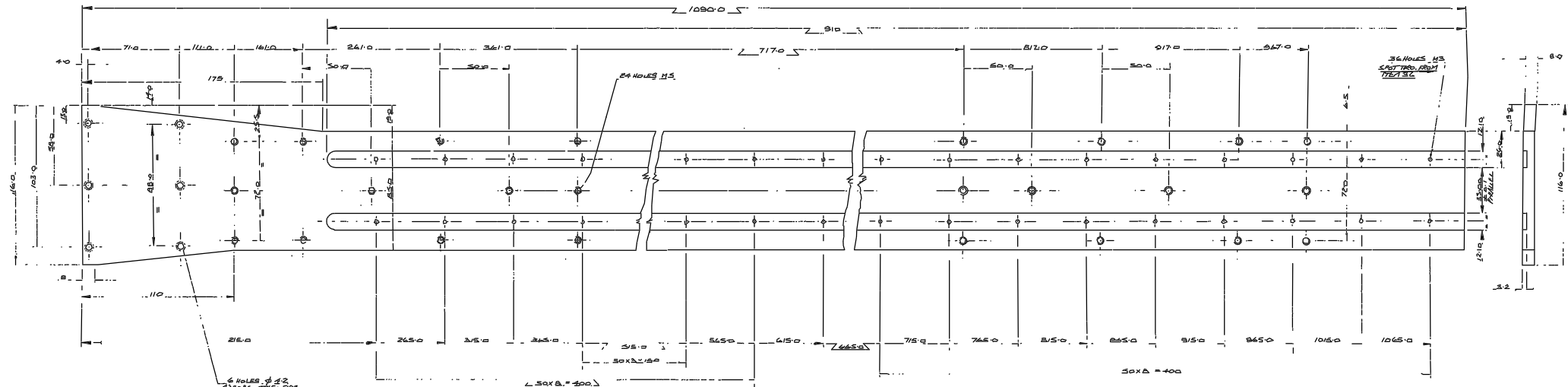


11		TITLE	
UPPER PLATE			
MATERIAL	SCALE	TOLERANCES	
AL. ALLOY	1:1	X ± 0.2	
FINISH	NO. REF. PER UNIT	XX ± 0.1	
BL. ANODISE	1	XXX	
DATE	DRAWING NO.		
V/FZ/250	R.G.O. W/FZ/256/1		



12		TITLE	
LOWER PLATE			
MATERIAL	SCALE	TOLERANCES	
AL. ALLOY	1:1	X ± 0.2	
FINISH	NO. REF. PER UNIT	XX ± 0.1	
BL. ANODISE	1	XXX	
DATE	DRAWING NO.		
V/FZ/250	R.G.O. W/FZ/256/2		

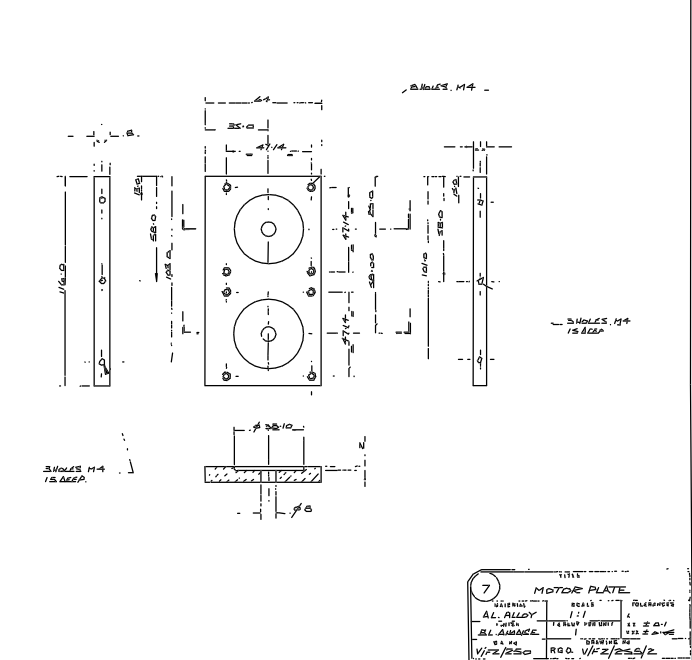
				<table border="1"> <tr> <td>Jan. 87</td> <td>BTH</td> <td rowspan="2">Tolerances (Unless otherwise stated)</td> <td rowspan="2">Material</td> <td rowspan="2">Dimms in m.m.</td> <td rowspan="2">Scale</td> <td rowspan="2">THIRD ANGLE PROJECTION</td> <td rowspan="2">G.A. No.</td> </tr> <tr> <td>Traced</td> <td>Aug. 87</td> <td>MJE</td> </tr> </table>				Jan. 87	BTH	Tolerances (Unless otherwise stated)	Material	Dimms in m.m.	Scale	THIRD ANGLE PROJECTION	G.A. No.	Traced	Aug. 87	MJE	<table border="1"> <tr> <td>ROYAL GREENWICH OBSERVATORY,</td> <td rowspan="2">Title</td> <td rowspan="2">4.2M A & G MAIN FILTER SLIDES</td> </tr> <tr> <td>HERSTMONCEUX CASTLE,</td> </tr> <tr> <td>HAILSHAM</td> <td>SUSSEX.</td> <td>DETAILS</td> </tr> </table>		ROYAL GREENWICH OBSERVATORY,	Title	4.2M A & G MAIN FILTER SLIDES	HERSTMONCEUX CASTLE,	HAILSHAM	SUSSEX.	DETAILS	<table border="1"> <tr> <td>Issue</td> <td>Mod. No.</td> <td>Date</td> <td>Drawn By</td> <td>Issue</td> <td>Mod. No.</td> <td>Date</td> <td>Drawn By</td> </tr> <tr> <td></td> <td></td> <td></td> <td></td> <td></td> <td></td> <td></td> <td></td> </tr> </table>		Issue	Mod. No.	Date	Drawn By	Issue	Mod. No.	Date	Drawn By								
Jan. 87	BTH	Tolerances (Unless otherwise stated)	Material	Dimms in m.m.	Scale	THIRD ANGLE PROJECTION	G.A. No.																																						
Traced	Aug. 87							MJE																																					
ROYAL GREENWICH OBSERVATORY,	Title	4.2M A & G MAIN FILTER SLIDES																																											
HERSTMONCEUX CASTLE,																																													
HAILSHAM	SUSSEX.	DETAILS																																											
Issue	Mod. No.	Date	Drawn By	Issue	Mod. No.	Date	Drawn By																																						



6 BEARING PLATE

MATERIAL	SCALE	TOLERANCES
AL ALLOY	1:1	± 0.1
BL ANODISE	1:1	± 0.1

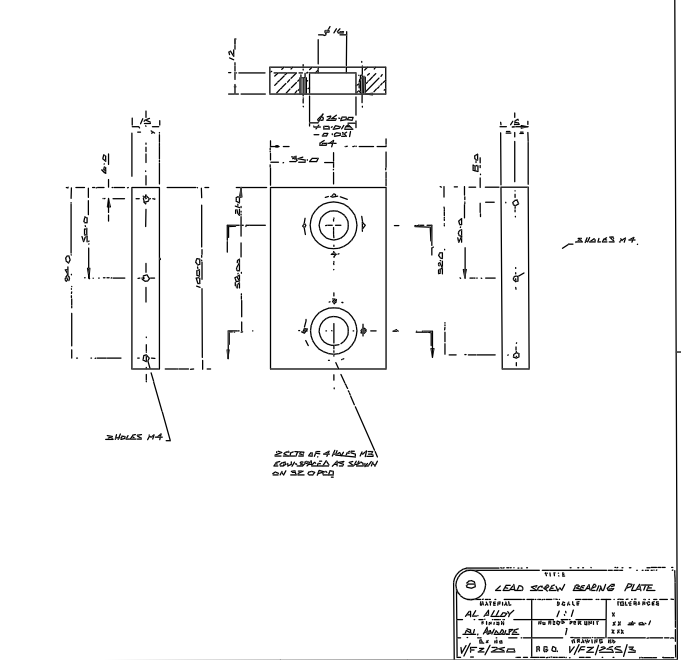
DRAWN BY: RGD V/FZ/255/1
 CHECKED BY: RGD V/FZ/255/1
 DATE: 13/2/05



7 MOTOR PLATE

MATERIAL	SCALE	TOLERANCES
AL ALLOY	1:1	± 0.1
BL ANODISE	1:1	± 0.1

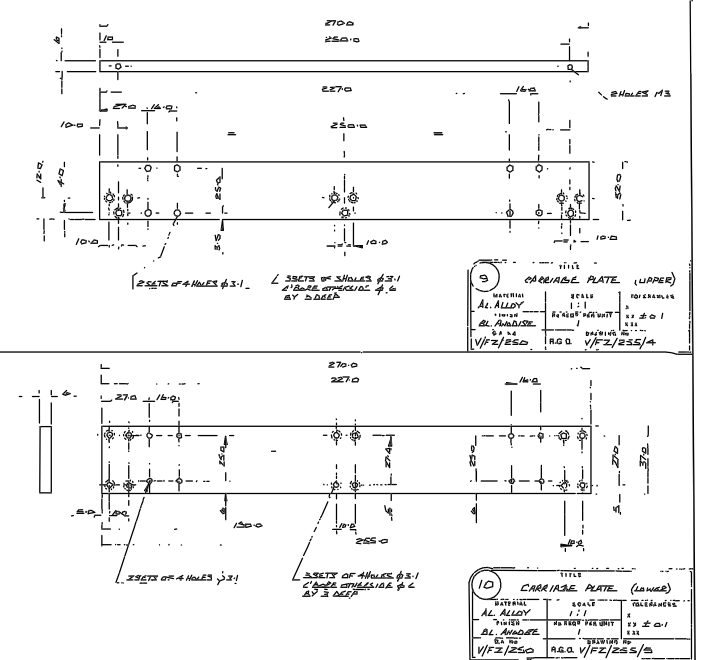
DRAWN BY: RGD V/FZ/255/2
 CHECKED BY: RGD V/FZ/255/2



8 LEAD SCREW BEARING PLATE

MATERIAL	SCALE	TOLERANCES
AL ALLOY	1:1	± 0.1
BL ANODISE	1:1	± 0.1

DRAWN BY: RGD V/FZ/255/3
 CHECKED BY: RGD V/FZ/255/3



9 CARRIAGE PLATE (UPPER)

MATERIAL	SCALE	TOLERANCES
AL ALLOY	1:1	± 0.1
BL ANODISE	1:1	± 0.1

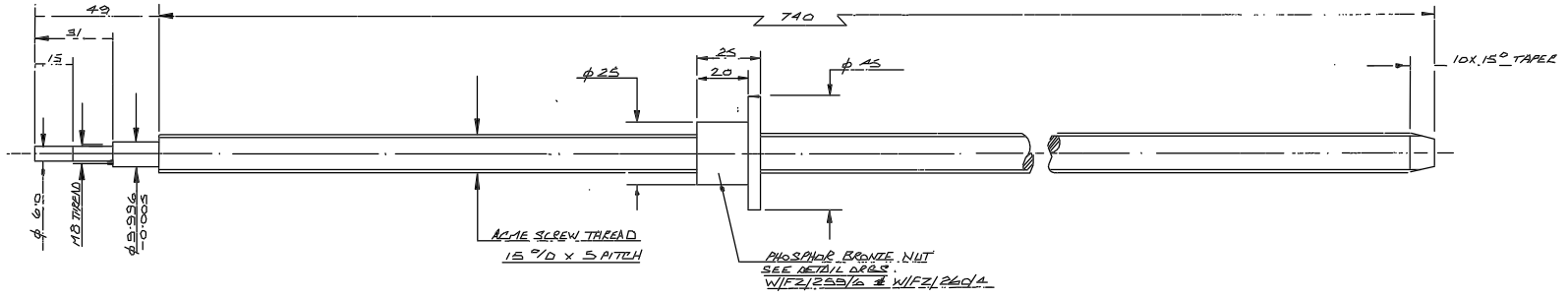
DRAWN BY: RGD V/FZ/255/4
 CHECKED BY: RGD V/FZ/255/4

10 CARRIAGE PLATE (LOWER)

MATERIAL	SCALE	TOLERANCES
AL ALLOY	1:1	± 0.1
BL ANODISE	1:1	± 0.1

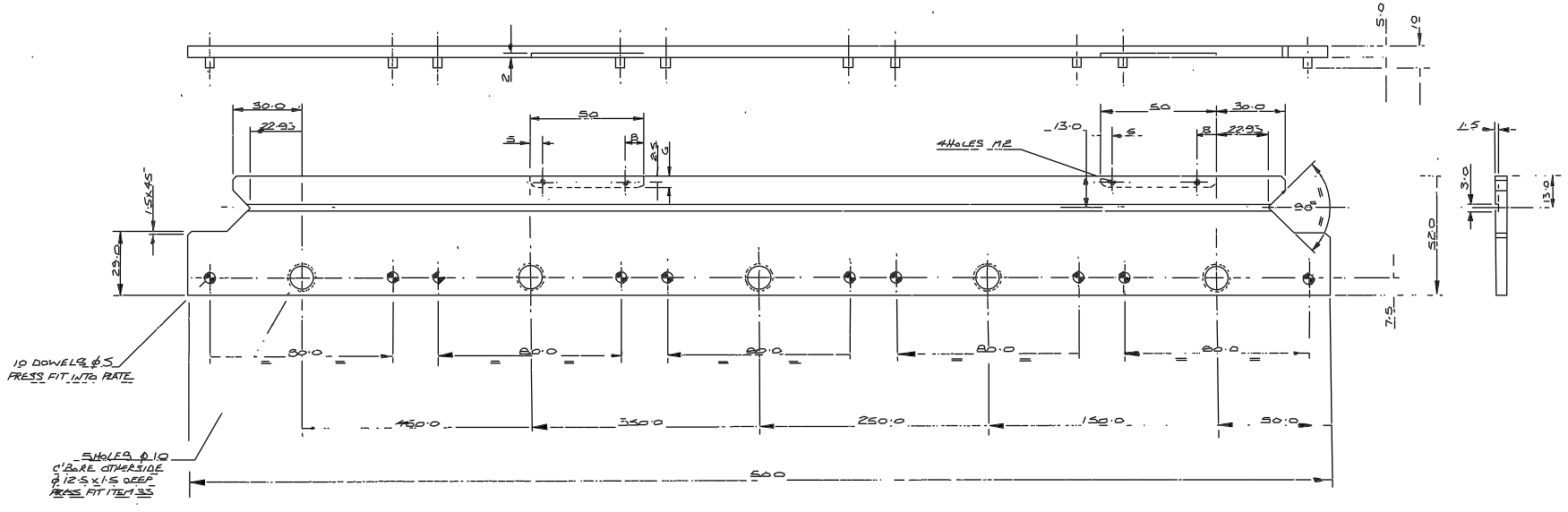
DRAWN BY: RGD V/FZ/255/5
 CHECKED BY: RGD V/FZ/255/5

Drawing No.
W/FZ/254/1-2



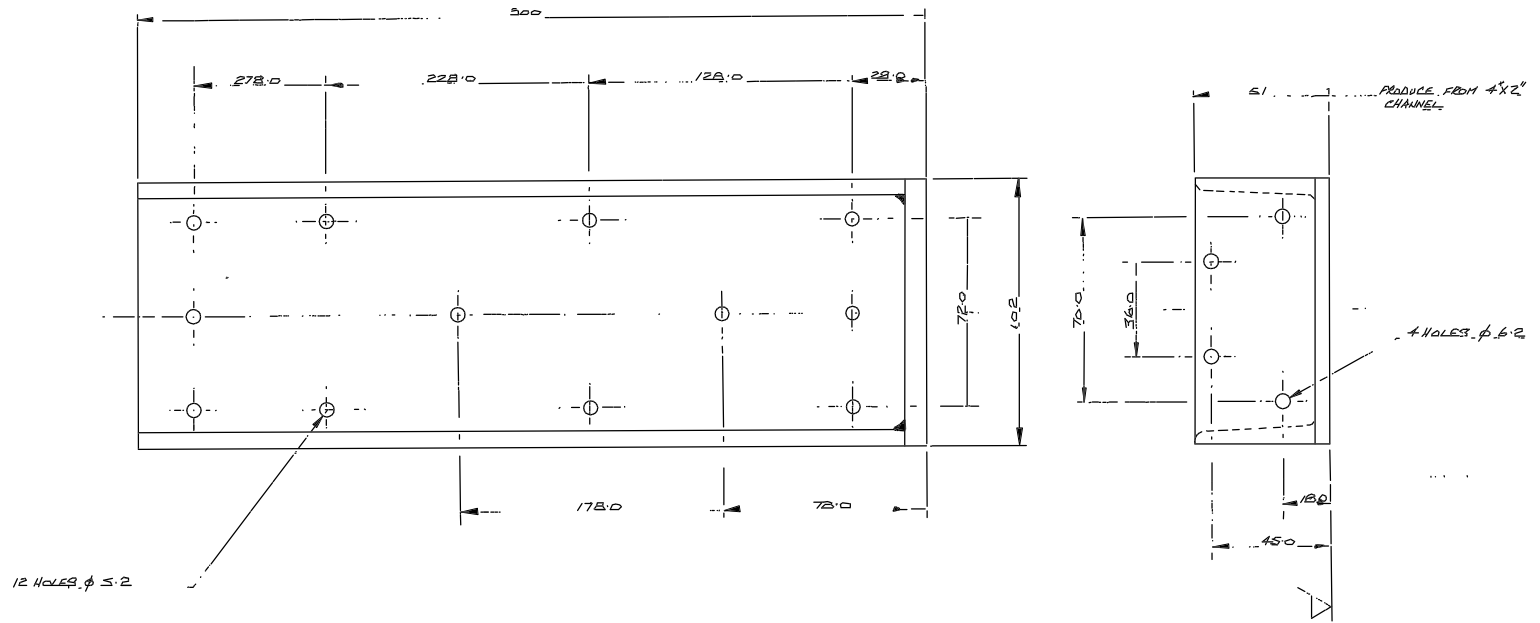
OBTAINABLE FROM:- SCHOFIELD & SAMSON
TUSCANY WHARF
48 OLSMAN ROAD
LONDON N1 5QT.

4		TITLE LEAD SCREW	
MATERIAL MILD STEEL	SCALE FULL SIZE	TOLERANCES X ± 0.25	
FINISH TWO	NO REQ PER UNIT TWO	XXX	
G.A. No.	DRAWING No.	R.G.O. W/FZ/254/1	



5		TITLE FILTER MOUNTING RAIL (OVER)	
MATERIAL AL ALLOY	SCALE 1:1	TOLERANCES X ± 0.2	
FINISH BL. ANODISE	NO REQ PER UNIT 1	XXX ± 0.1	
G.A. No.	DRAWING No.	R.G.O. W/FZ/254/2	

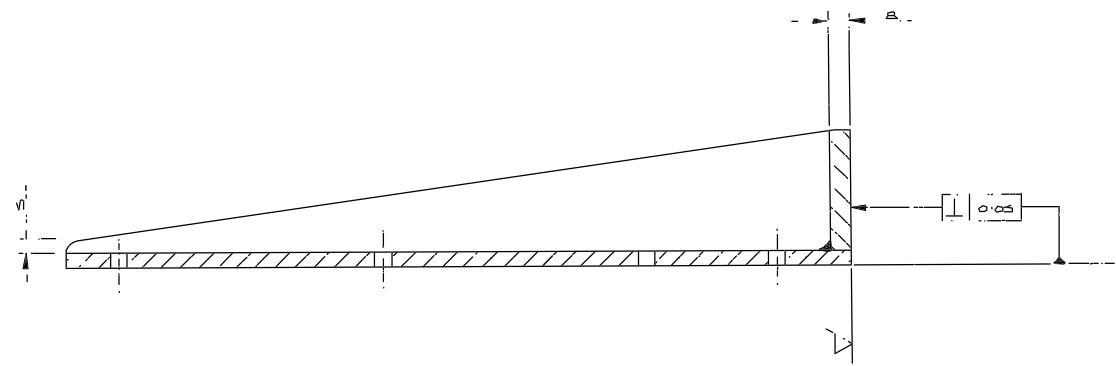
Tolerances (Unless otherwise stated)				Material		Dimms in m.m.		Scale 1/1		THIRD ANGLE PROJECTION		G.A. No.	
X ±				Finish		ROYAL GREENWICH OBSERVATORY, HERSTMONCEUX CASTLE, HAILSHAM SUSSEX.		Drg. No. No. Req.		Title 42A G AUTOPOWDER FILTER SLIDES DETAILS		Drawing No. W/FZ/254/1-2	
XXX ±				Used on V/FZ/250									



12 HOLES ϕ 5.2

PRODUCE FROM 4 1/2" CHANNEL

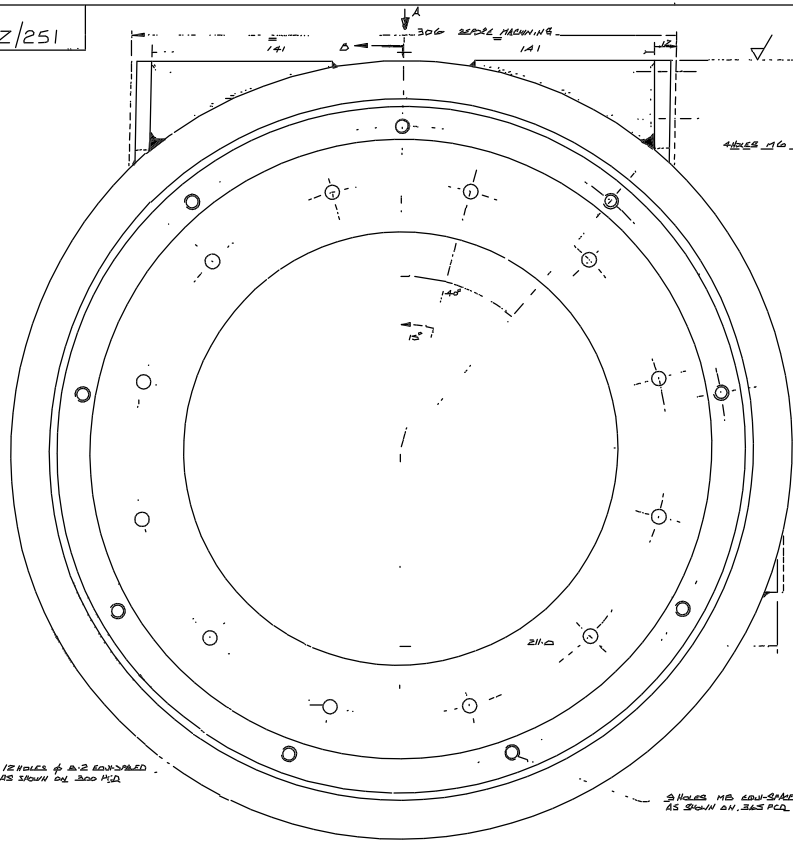
4 HOLES ϕ 6.2



							Tolerances (Unless otherwise stated)		Material		Dimms in m.m.		Scale		THIRD ANGLE PROJECTION		S.A. No.	
							X ± 0.1		MILD STEEL		ROYAL GREENWICH OBSERVATORY,		1/1		4.2H MAIN FUSE SLIDES		Drawing No.	
							X.XX ±		Finish MATT BLACK PAINT.		HERSTMONCEUX CASTLE, HAILSHAM				SUPPORT ARM		W/FZ/252	
Issued	Mod. No.	Date	Drawn By	Issue	Mod. No.	Date	Drawn By	Org. No.	No. Req.	Used on		V/FZ/250						
			J.B7				BTW											

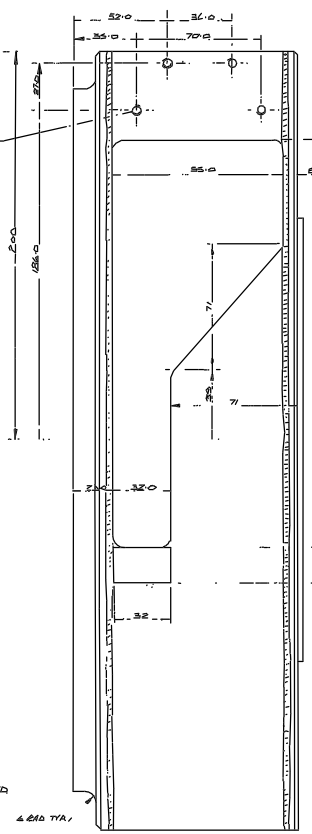
DRAWING NUMBER	No. of Sheets	G.A. Item No.	DRAWING TITLE OR COMPONENT NAME	No. of	MATERIAL STOCK OR ORDER No. AND DATE	REMARKS	ISSUE DATE	ISSUED TO	FINISH DATE
		36	TSUBAKI BEARING MBW 12	2 UNITS		300 LONG TRACK 2 CARRIAGES			
		37	INA: BEARING YRT 260 TYPE B	1					
		38	DEEP GROOVE BEARING SKF 6000	2					
		39							
		40	HELICAL COUPLING WTR/20/60	2					
		41	MOTOR SIOSYN	2					
		42	HONEYWELL SWITCH	2					
		43	FILTER 85°D x 3 THICK	10					
		44	BAR CODE UNIT	2					
		45	NUT M8	4					
		46	SOCKET HD. CAP SCREW M8 x 20 LG.	12					
		47	SOCKET HD. CAP SCREW M5 x 12 LG.	27					
		48	SOCKET HD. CAP SCREW M3 x 12 LG.	35					
		49	SOCKET HD. CAP SCREW M6 x 15 LG.	8					
		50							
W FZ 262/1		51	UPPER GUIDE RAIL	1					
262/2		52	SHOULDER SCREW	2					
262/3		53	LOWER GUIDE RAIL	1					
W FZ 263/1		54	BARCODE DIST. PIECE	5					
263/2		55	BRACKET (BAR CODE HEAD)	1					
263/3		56	BRACKET BAR CODE HEAD	1					
263/4		57	DISTANCE PIECE	4					
263/5		58	WASHER	2					
263/6		59	SHOULDER SCREW	1					
263/7		60	SHOULDER SCREW	1					
263/8		61	SPRING	4					
JOB TITLE ASSY MAIN FILTER SLIDES						ASSY DRG. No. V FZ 250	SHEET No. 2 of 2	DRAWN BY BTH DATE JAN 87	
ROYAL GREENWICH OBSERVATORY,						HERSTMONCEUX CASTLE,	HAILSHAM,	SUSSEX	

101
V/FZ/251

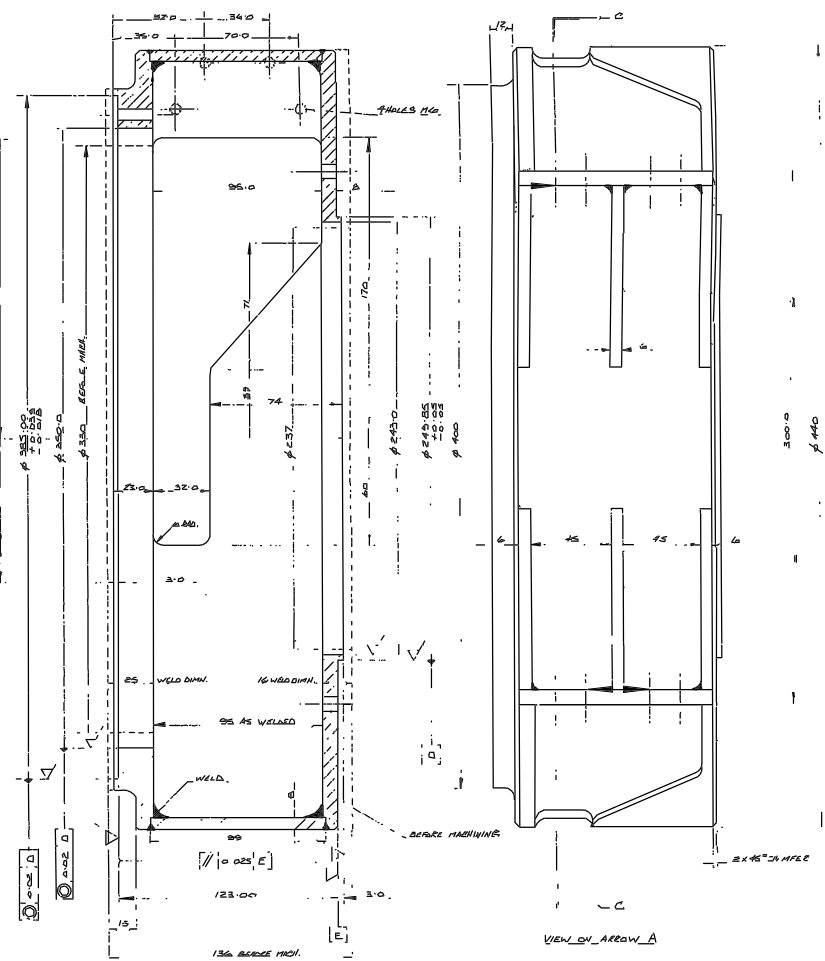


18 HOLES ϕ 22 EQUI-SPACED
AS SHOWN ON 300 P.L.D.

3 HOLES M5 EQUI-SPACED
AS SHOWN ON 300 P.L.D.

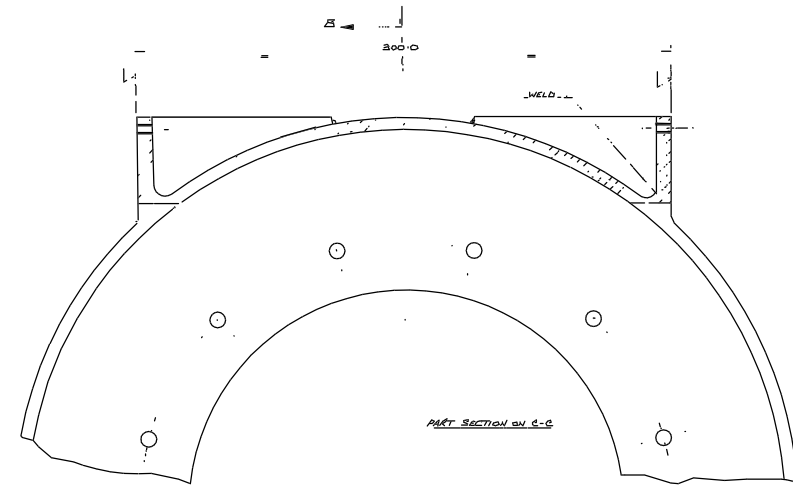


4.610 TYP.



NOTE NORMALISE AFTER WELDING & BEARING FINISHING

ALTERNATIVE RECOMMENDATION
TO CASTING

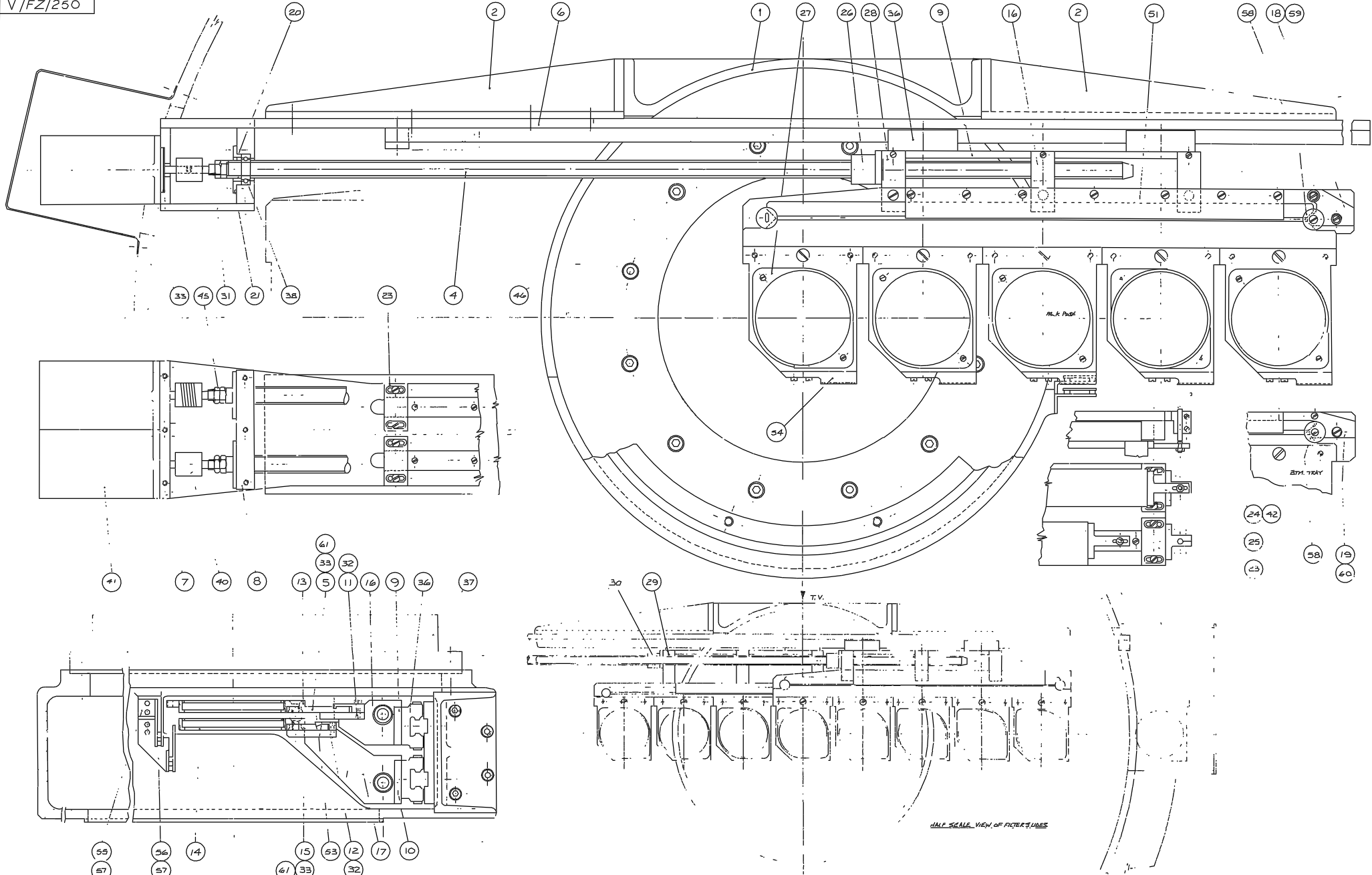


PART SECTION ON C-C

								Material MILD STEEL FABRICATION	Drawing No. III	Scale FULL SIZE	THIRD ANGLE PROJECTION		G.A. No.
								Finish MATT BLACK PAINT	1	ROYAL GREENWICH OBSERVATORY, HERSTMONCEUX CASTLE, HAILEHAM SUSSEX	1-21 1-22 MAIN BEARING SLIDES		Drawing No.
Issue	Matl No	List	Drawn By	Issn	Matl No	Date	Drawn By	Drw No	No. Rev	MAIN BEARING SUPPORT		V/FZ/251	
			JAW BT				BTH						

Eng. No

V/FZ/250



				Tolerances (Unless otherwise stated)		Material		Dimm. in in. Scales Full Size & 1/2 Size		THIRD ANGLE PROJECTION 2nd A.E.G. CASE I		G.A. No	
				X X.X X.XX		Finish		Drwg. No. No. Rtg. Used on		ROYAL GREENWICH OBSERVATORY, HERSTMONCEUX CASTLE, HAILSHAM SUSSEX.		Drawing No	
Issue	Mat. No.	Date	Drawn By	Issue	Mat. No.	Date	Drawn By			ASSY. MAIN FILTER SLIDES		V/FZ/250	

HALF SCALE VIEW OF FILTER SLIDES