

								Tolerances (Unless otherwise stated)		Material		Dimms in mm.		Scale		THIRD ANGLE PROJECTION		G.A. No.			
								X $\pm 0.25$		MILD STEEL		1		1/1		ROYAL GREENWICH OBSERVATORY,		Drawing No.			
								XX $\pm 0.25$		Finish		Dwg No.		No. Rev.		HERSTMONCEUX CASTLE,		Title			
								XXX $\pm$		MATT BLACK PAINT.		Use on				HAILSHAM SUSSEX.		4.2M DESCOPED AEG UNIT		W/FU/003	
								Issue		Date		Drawn By		Date		Drawn By		Date		Date	
								OCT 85		BTH											

DRAWING NUMBER	No. of Sheets	G.A. Item No.	DRAWING TITLE OR COMPONENT NAME	No. of	MATERIAL STOCK OR ORDER No. AND DATE	REMARKS	ISSUE DATE	ISSUED TO	FINISH DATE
V/FU/0001	1		DETAIL OF TOP SECTION	1					
V/FU/0002	1	1	DETAIL OF TOP SECTION	1					
V/FU/0003	1	2	DETAIL OF TOP SECTION	1					
V/FU/0004	1	3	GUIDING FLAT ASSEMBLY	1		SUB ASSY			
V/FU/0005	1	4	GUIDING FLAT ASSEMBLY	1					
V/FU/0006	1	5	LENS PLATE	1					
V/FU/0007	1	6	SPACER	1					
V/FU/0008	1	7	MOUNT	1					
V/FU/0009	1	8	BASE PLATE	1					
V/FU/0010	1	9	BASE PLATE	1					
V/FU/0011	1	10	FLAT	1					
V/FU/0012	1	11	TV MOUNT ASSEMBLY	1					
V/FU/0013	1	12	COVER	1					
V/FU/0014	1	13	SLIDE	1					
V/FU/0015	1	14	TV BRACKET	1					
V/FU/0016	1	15	SHUTE TUBE	1					
V/FU/0017	1	16	BEARING HOLES	1					
V/FU/0018	1	17	SLIDE PLATE	1					
V/FU/0019	1	18	SLIDE PLATE	1					
V/FU/0020	1	19	SLIDE PLATE	1					
V/FU/0021	1	20	TOP COVER	1					
V/FU/0022	1	21	SPLIT VIEW OF MOUNT ASSEMBLY	1		SUB ASSY			
V/FU/0023	1	22	SUPPORT TUBE	1					
V/FU/0024	1	23	LENS CELL	1					
V/FU/0025	1	24	PIECE	1					
V/FU/0026	1	25	KEY PLATE	1					
V/FU/0027	1	26	CLAMP	1					
V/FU/0028	1	27	FLAT MIRROR	1					
V/FU/0029	1	28	MOUNTING SUPPORT	1					
V/FU/0030	1	29	LENS SPACER	1					
V/FU/0031	1	30	BEARING PAD	1					
V/FU/0032	1	31	MOUNTING CLAMP	1					
V/FU/0033	1	32	LATCH PLATE	1					
V/FU/0034	1	33	LATCH	1					
V/FU/0035	1	34	PLATE	1					
V/FU/0036	1	35	SPLIT VIEW OF LENS ELEMENTS	1					

JOB TITLE: ASSEMBLY DE-SIGNED AT G UNIT HERSTMONCEUX

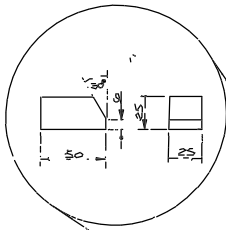
ROYAL GREENWICH OBSERVATORY, HERSTMONCEUX CASTLE, HAILSHAM, SUSSEX

ASSY DRG. No. V/FU/0001

SHEET No. 1

DRAWN BY: BTH

DATE: SEPT 20



4 LOCATING CHOCKS  
POSITIONED ON A 250 RAD.  
AS SHOWN AND WELD

2 OFF FIXED CASTERS, FDI  
OBTAINABLE FROM KEY  
INDUSTRIAL EQUIPMENT  
BLACK MORE RD VERWOOD  
WIMBORNE DORSET BH21 6AT

2 BRACKET PLATES SIMILARLY  
SHAPED ONE EACH SIDE OF  
FRAME. REPEAT ON EACH CORNER  
WELD INTO POSITION

4 PADS 100x50x12  
WELD IN POSITION  
CENTRALLY ALONG  
EACH SIDE.

OUTLINE OF DE-SLOPED  
A X C UNIT RESTING ON  
HANDLERS TROLLEY

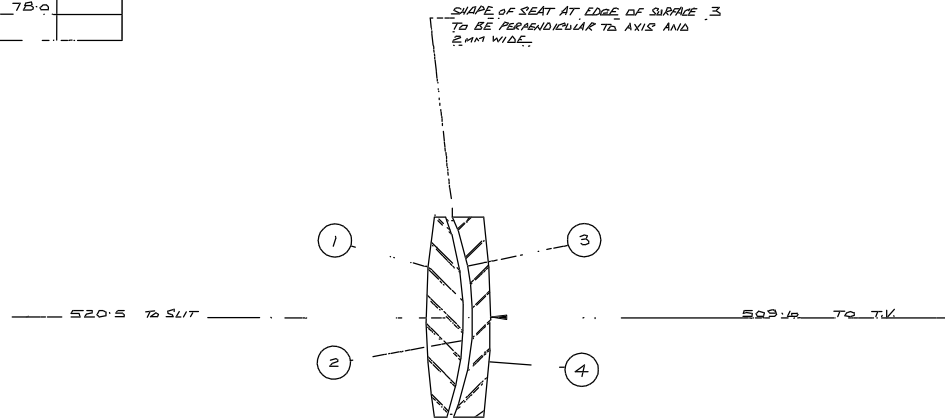
2 OFF SWIVEL CASTERS  
S.D.T. OBTAINABLE FROM  
KEY INDUSTRIAL EQUIPMENT  
BLACK MORE RD VERWOOD  
WIMBORNE DORSET BH21 6AT

RECTANGULAR HOLLOW TUBE  
100x50x5 WALL THICKNESS  
OBTAINABLE FROM YEDWART  
RUTHERFORD WAY COANLEY SUSSEX

NOTE SAFE WORKING LOAD OF 1000KG  
TO BE STENCILLED ON SIDE OF FRAME

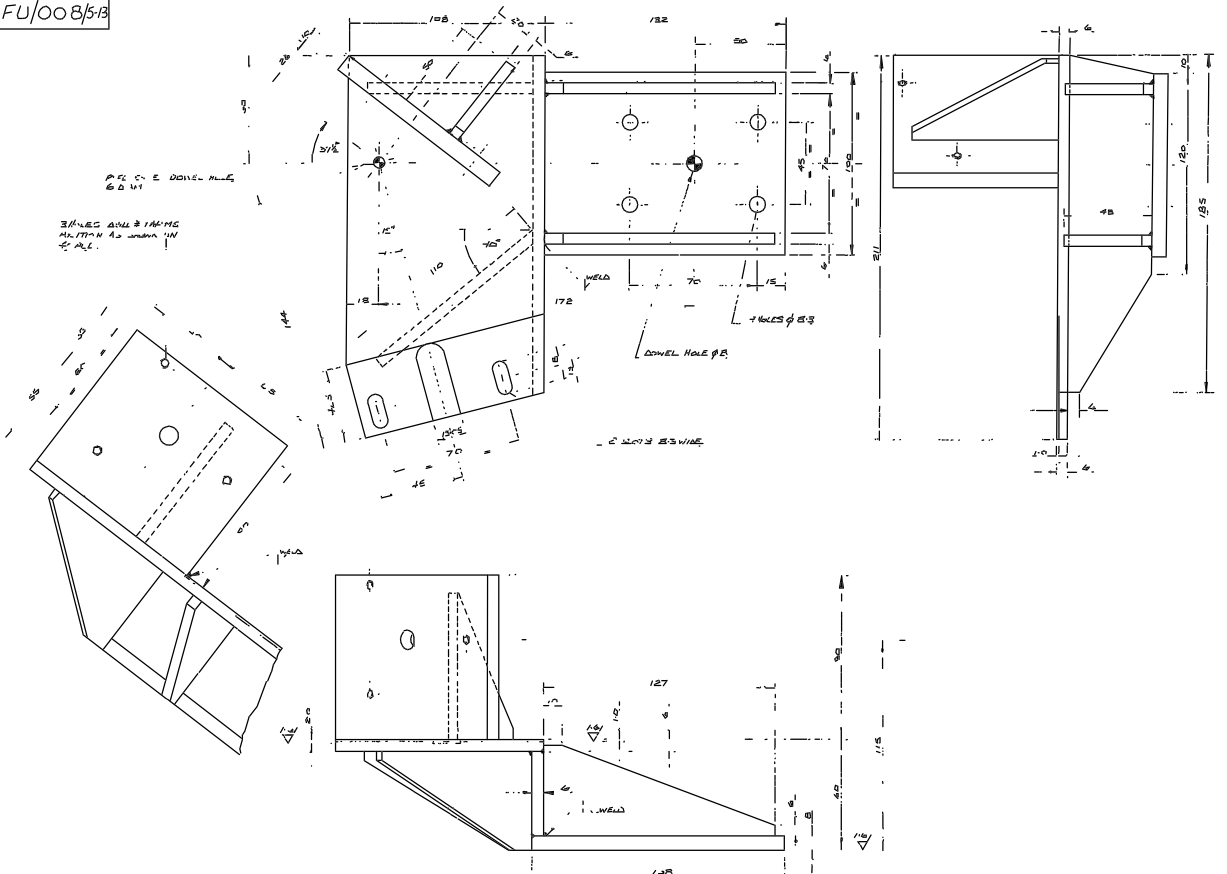
								Tolerances (Unless otherwise stated)		Material		Dimensions in m.m.		Scale 1/5		THIRD ANGLE PROJECTION		D.A. No.	
								X ± 0.10		MILD STEEL		1				ROYAL GREENWICH OBSERVATORY, HERSTMONCEUX CASTLE, HAILSHAM SUSSEX.		Drawing No.	
								XX ±		Finish		Dwg. No.		No. Req.		A 2 M A X G CASE (DE-SLOPED)		W/FU/010	
								XXX ±		YELLOW		Used on				HANDLING TROLLEY			
Issue	Mod. No.	Date	Drawn By	Issue	Mod. No.	Date	Drawn By	HAROLD BTH											

SURFACE N <sup>o</sup>	RADIUS OF CURVATURE	AXIAL SEPARATION	MATERIAL (SCHOTT)	CLEAR DIAM.	FIN. DIAM.	REMARKS
1	237.39	14.0	SK 5	73	78.0	
2	112.00	3.23	AIR	73	78.0	
3	106.04	7.0	SF 5	71	78.0	
4	283.90			71	78.0	

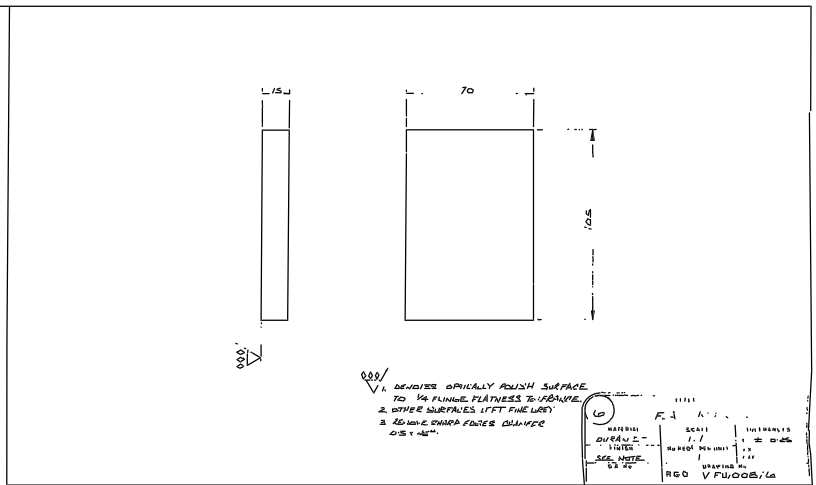


- NOTES.
1. CURVES ARE FITTED TO ICOS TEST PLATES IDENTIFY BY RADIUS OF CURVATURE.
  2. FOR SIGN OF CURVATURE SEE SKETCH.
  3. FIGURE ACCURACY 1/2 FRINGE PEAK TO VALLEY.
  4. DELIVER COMPONENTS UNCOATED.
  5. NO MOUNT REQUIRED.
  6. SCHOTT GLASS P QUALITY
  7. DIMENSIONS OF AIR SPACES ARE FOR FUTURE REFERENCE ONLY.
  8. SEAT AND EDGES TO BE FINE GRIND.

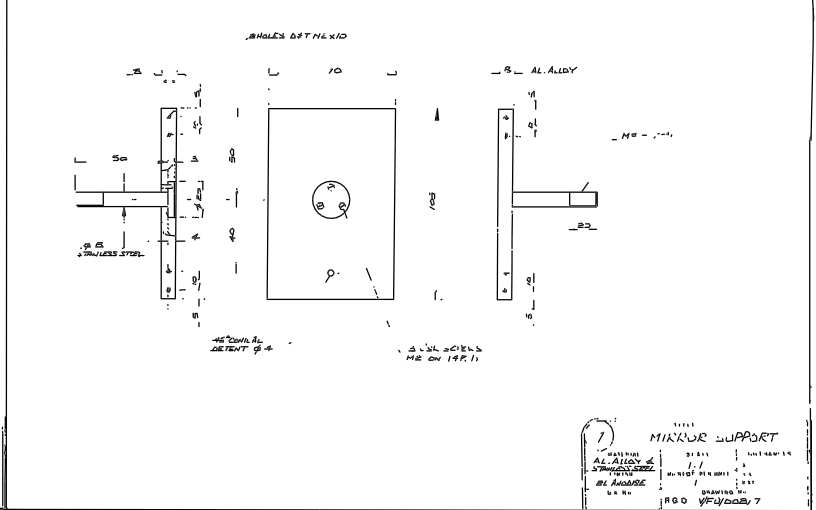
								Tolerances (Unless otherwise stated)	Material <i>SEE TABLE</i>	Dimas in mm.		Scale 1:1	THIRD ANGLE PROJECTION		G.A. No.
								X 1	Finish	Drq. No.	No. Req.		42M DESLOPED A.B UNIT		Drawing No.
								X.X J					SLIT VIEWING LENS ELEMENTS		W/FU/009
								X.XX †	Used on				ROYAL GREENWICH OBSERVATORY, HERSTMORCEUX CASTLE, HAILSHAM SUSSEX.		
Issue	Mod. No.	Date	Drawn By	Issue	Mod. No.	Date	Drawn By								



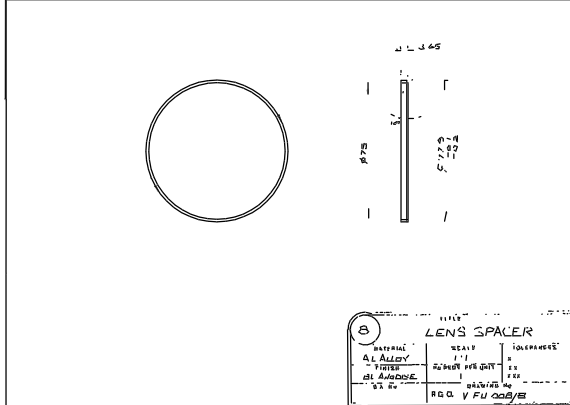
5 BRACKET  
MATERIAL: MULTISIBEL  
SCALE: 1:1  
FINISH: WHEEL FINISH  
Dwg No: V/FU/008/5  
Issue: 1



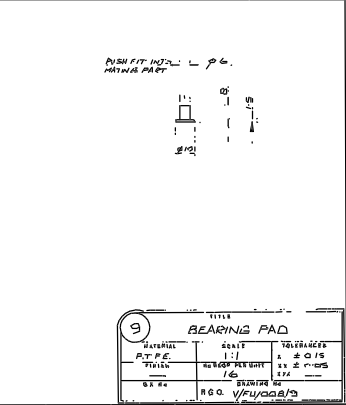
7 MIRROR SUPPORT  
MATERIAL: AL ALLOY  
SCALE: 1:1  
FINISH: WHEEL FINISH  
Dwg No: V/FU/008/7  
Issue: 1



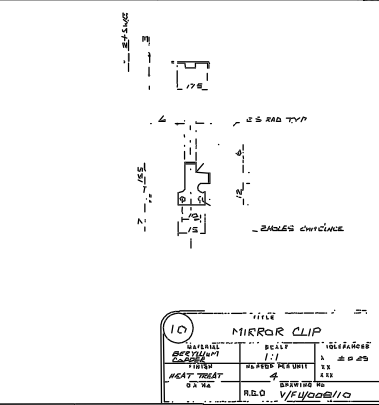
10 MIRROR CLIP  
MATERIAL: MULTISIBEL  
SCALE: 1:1  
FINISH: WHEEL FINISH  
Dwg No: V/FU/008/10  
Issue: 1



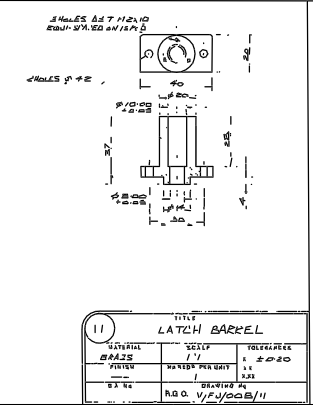
8 LENS SPACER  
MATERIAL: AL ALLOY  
SCALE: 1:1  
FINISH: WHEEL FINISH  
Dwg No: V/FU/008/8  
Issue: 1



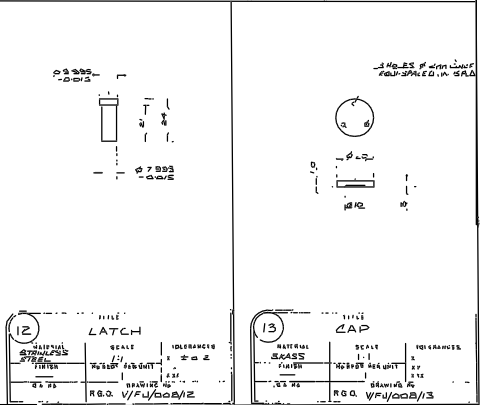
9 BEARING PAD  
MATERIAL: MULTISIBEL  
SCALE: 1:1  
FINISH: WHEEL FINISH  
Dwg No: V/FU/008/9  
Issue: 1



12 LATCH  
MATERIAL: MULTISIBEL  
SCALE: 1:1  
FINISH: WHEEL FINISH  
Dwg No: V/FU/008/12  
Issue: 1



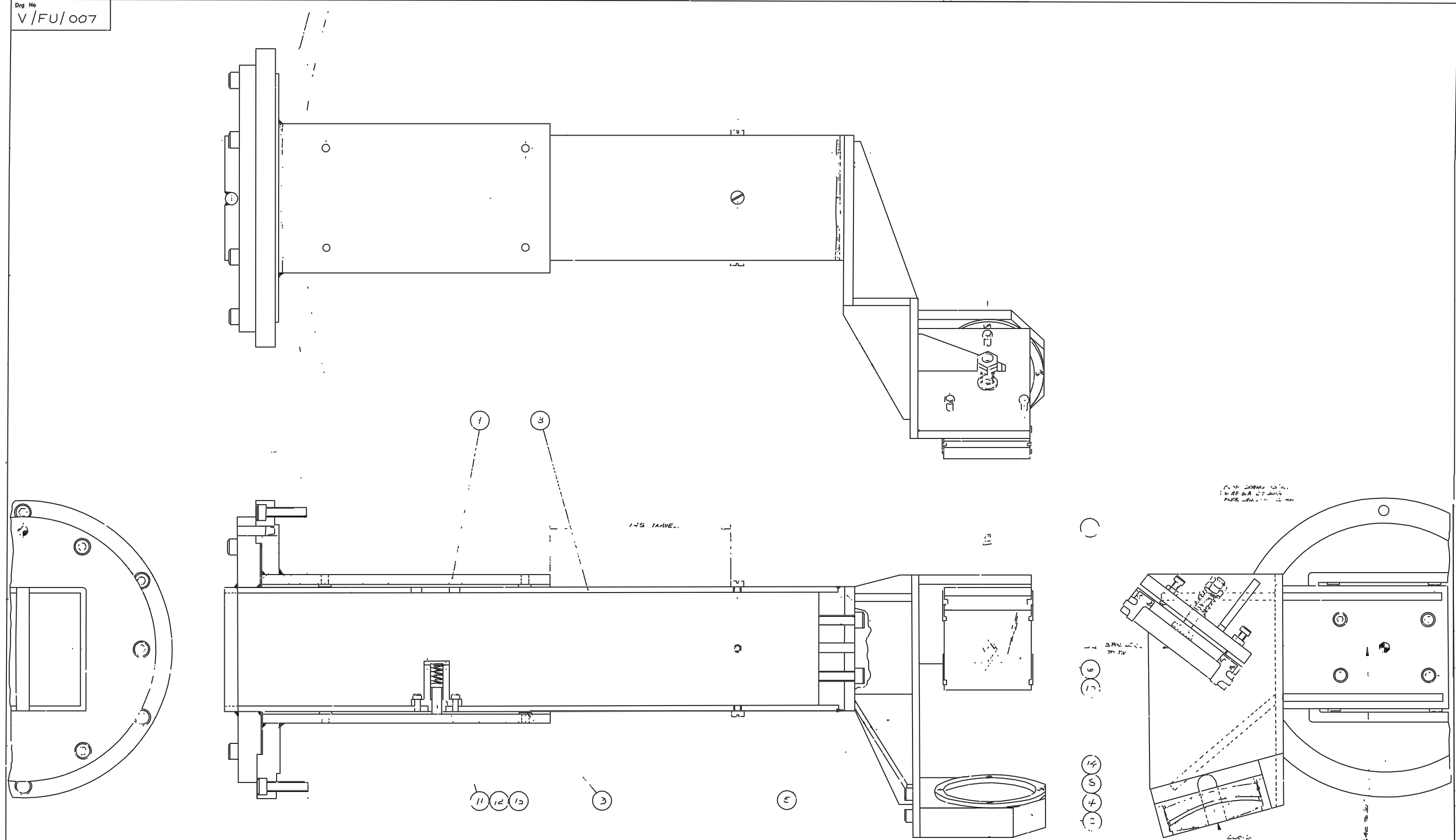
11 LATCH BARREL  
MATERIAL: MULTISIBEL  
SCALE: 1:1  
FINISH: WHEEL FINISH  
Dwg No: V/FU/008/11  
Issue: 1



13 LAP  
MATERIAL: MULTISIBEL  
SCALE: 1:1  
FINISH: WHEEL FINISH  
Dwg No: V/FU/008/13  
Issue: 1

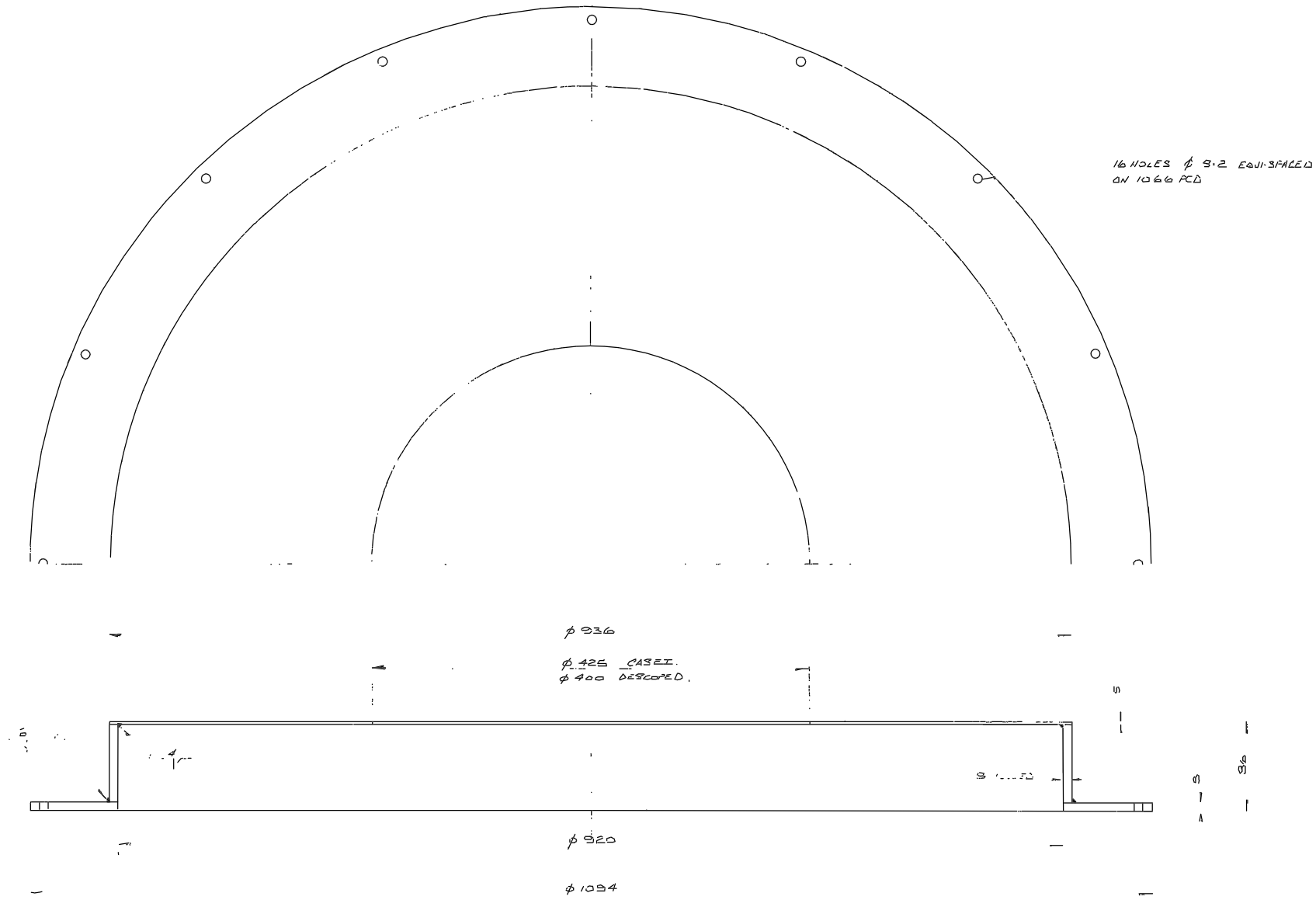
Tolerances (Unless otherwise stated)				Material		Dimts. in m.m.		Scale		THIRD ANGLE PROJECTION		S.A. No.	
X ±				ROYAL GREENWICH OBSERVATORY,		Dwg No		Title		L28 DESIGNED A28 UNIT		Drawing No	
XX ±				HERSTMONCEUX CASTLE,		Used on		DETAILS		V/FU/008/5/3			
XXX ±				HAILSHAM				SUSSEX					
Issue	Mod. No	Date	Drawn By	Issue	Mod. No	Date	Drawn By						





FOR SHIPMENT TO THE  
1.000 BA 1.0000  
PAPER 1.0000 1.0000

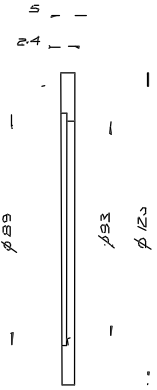
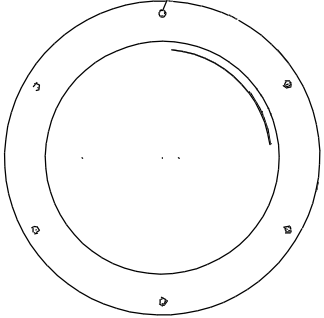
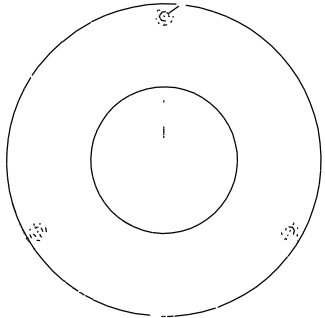
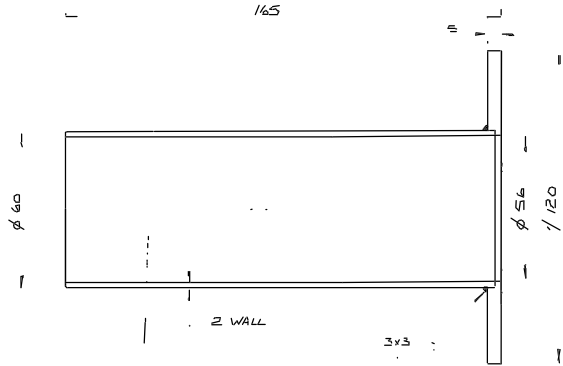
				Tolerances (Unless otherwise stated)				Material		Dimms in m.m		Scale FULL SIZE		THIRD ANGLE PROJECTION		GA No	
				X 1				Finish		ROYAL GREENWICH OBSERVATORY, HERSTMONCEUX CASTLE, HAILSHAM		ONE		4.5m TELESCOPIC ARES UNIT		Drawing No	
				XX 1				Dwg No		NO REQ.		Folio		3/17 VIEWING MOUNT ASSEMBLY		V/FU/007	
				XXX 1				Used on		SUSSEX							



								Tolerances (unless otherwise stated)		Material AL. ALLOY		Dimms in m.m.		Scale 1/2		THIRD ANGLE PROJECTION		G.A. No. V.F.U.000	
								X $\pm$ 0.25	Finish MATT BL. PRINT OR ANODISE		1		ROYAL GREENWICH OBSERVATORY, HERSTMONCEUX CASTLE, HAILSHAM SUSSEX.		Title TOP COVER.		Drawing No. W/FU/006		
Issue	Mod. No.	Date	Drawn By	Issue	Mod. No.	Date	Drawn By	XX $\pm$ —	Dr. No.	No. Rep.	Used on								



Drawing No. W/FU/005/4-3

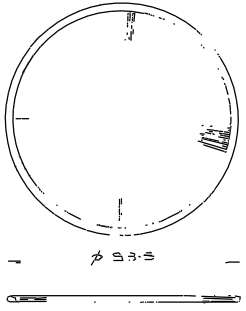
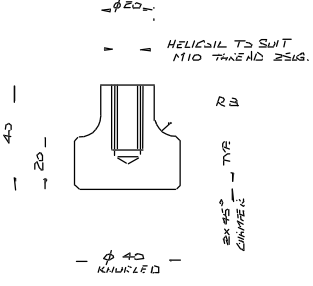
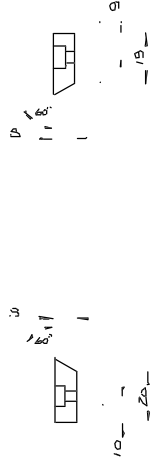
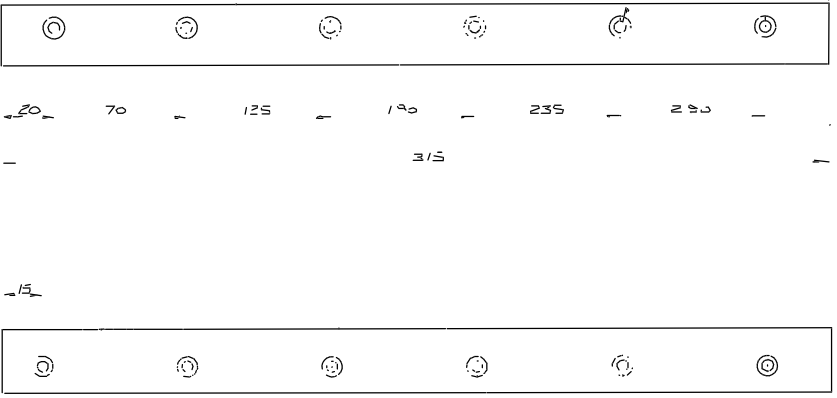


6 HOLES 1.3 EQUI-SPACED ON 110 P.C.D.

4			
TITLE BAFFLE TUBE			
MATERIAL AL. ALLOY	SCALE 1 = 1	TOLERANCES X ± 0.25	
FINISH BL. ANODISE	NO REQ PER UNIT 1	XX	XXX
G.A. No. W/FU/005	DRAWING No. R.G.O. W/FU/005/4		

5			
TITLE BRUSH RING HOLDER			
MATERIAL AL. ALLOY	SCALE 1 = 1	TOLERANCES X ± 0.25	
FINISH BL. ANODISE	NO REQ PER UNIT 1	XX	XXX
G.A. No. W/FU/005	DRAWING No. R.G.O. W/FU/005/5		

12 HOLES Ø 4.2 Ø BORE  
Ø 7.5 X 4 DEPTH



NOTE 1. PRODUCE AS A ZOSED SINGLE RING  
CODE A1 S616/44  
2. OBTAINABLE FROM KLEENEX INDUSTRIAL LTD,  
SPECIAL PRODUCTS DIVISION, HANHAM,  
BRISTOL BS15 3DY.

6			
TITLE SLIDE WAYS			
MATERIAL AL. ALLOY	SCALE 1 = 1	TOLERANCES X ± 0.10	
FINISH BL. ANODISE	NO REQ PER UNIT 1 PAR	XX	XXX
G.A. No. W/FU/005	DRAWING No. R.G.O. W/FU/005/6		

7			
TITLE CLAMP KNOB			
MATERIAL BLACK NYLON	SCALE 1 = 1	TOLERANCES X ± 0.25	
FINISH	NO REQ PER UNIT	XX	XXX
G.A. No. W/FU/005	DRAWING No. R.G.O. W/FU/005/7		

3			
TITLE BRUSH RING			
MATERIAL SEE NOTE	SCALE 1 = 1	TOLERANCES X ± 0.10	
FINISH	NO REQ PER UNIT	XX	XXX
G.A. No. W/FU/005	DRAWING No. R.G.O. W/FU/005/3		

Issue	Mod. No.	Date	Drawn By	Issued	Mod. No.	Date	Drawn By

Tolerances (Unless otherwise stated)  
X ±  
XX ±  
XXX ±

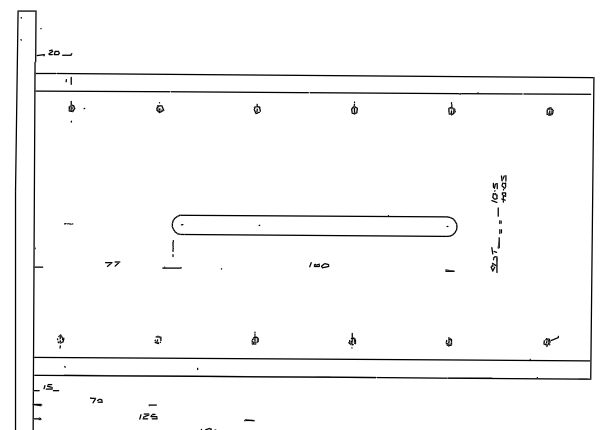
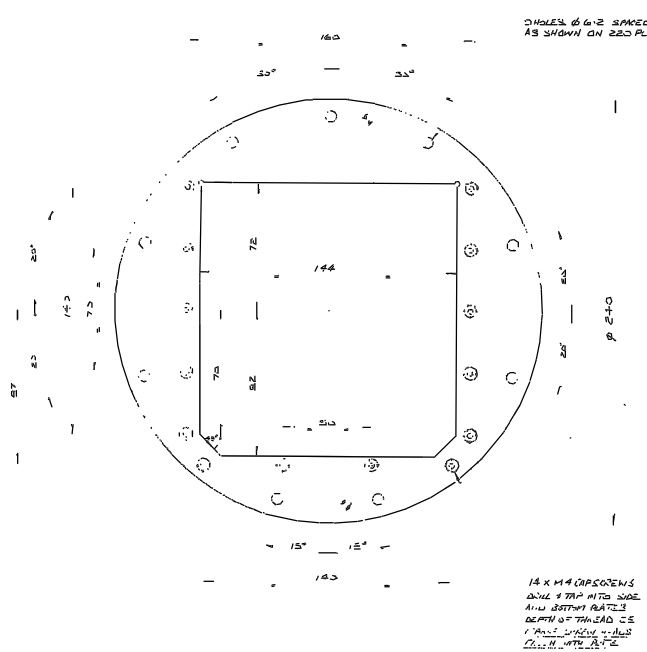
Material	—	Dimts in m.m.	Scale	—
Finish	—	Drq. No.	No. Req.	—
		Used on		

ROYAL GREENWICH OBSERVATORY,  
HERSTMONCEUX CASTLE,  
HAILSHAM  
SUSSEX.

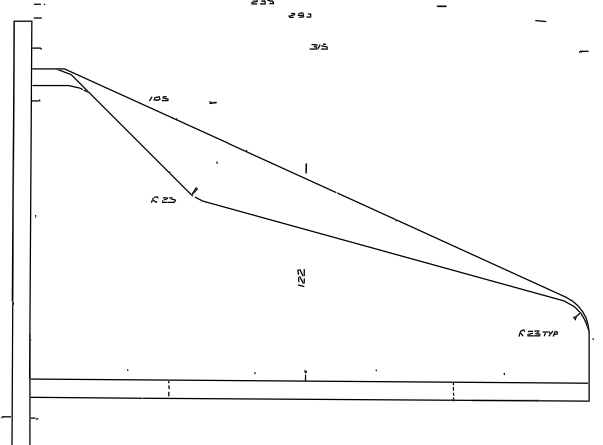
THIRD ANGLE PROJECTION  
4.2 M. DECODED ANG UNIT  
T.V. MOUNT DETAILS

G.A. No. W/FU/005  
Drawing No. W/FU/005/4-3

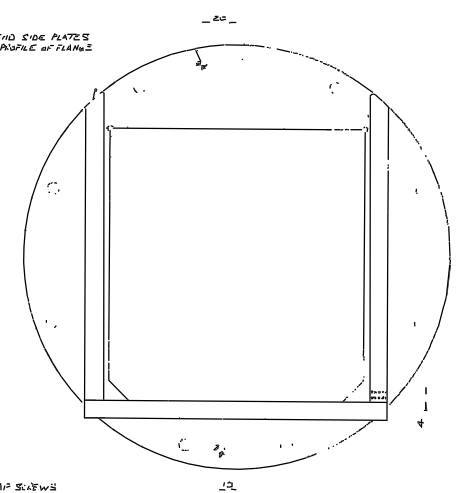
Drwg No  
V/FU/005/3



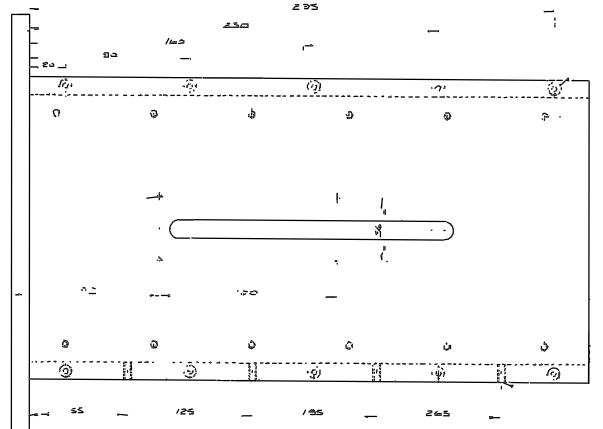
12 HOLES 11.4  
2 HOLES 6.4 PULL  
FIT ON ASSY



BEND SIDE PLATES  
TO RADIUS OF FLANGES

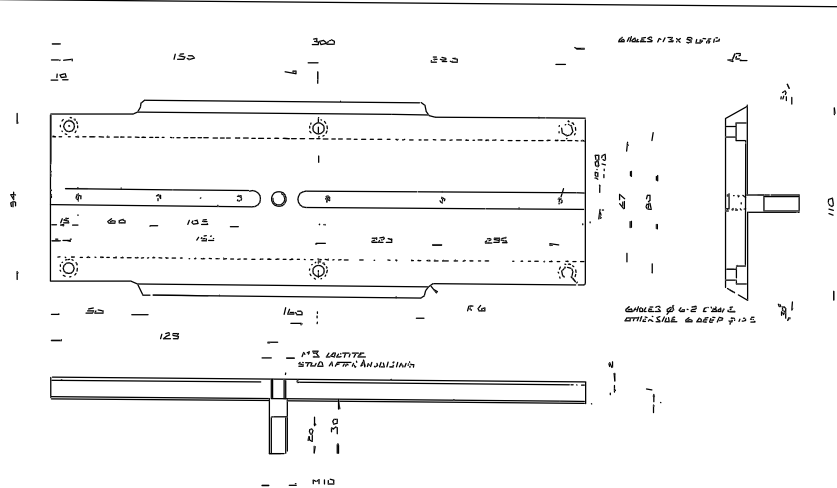
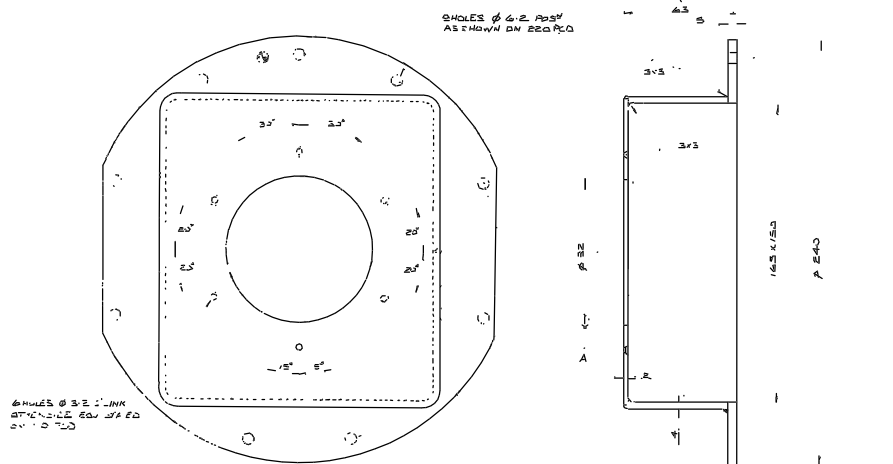
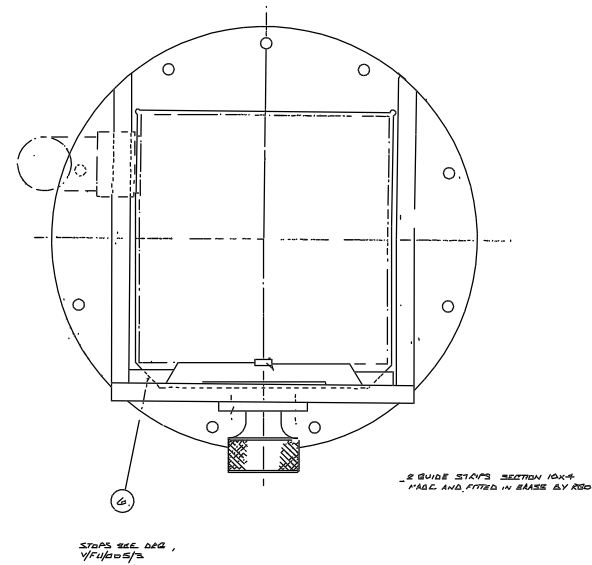
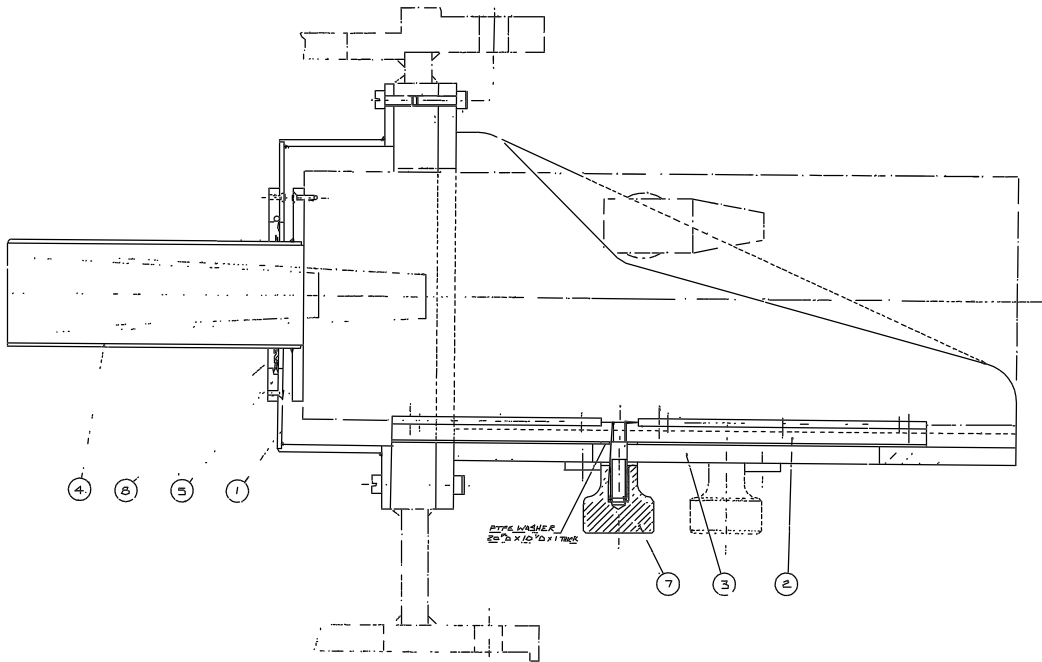


10 X M4 CAP SCREWS  
DRIVE & TAP INTO SIDE  
PLATE. DEPTH OF TAP INTO  
SIDE PLATE



2 HOLES 3.2  
HOLE TO BE DRILLED  
CLOSE TO SIDE  
& 2 HOLES 1.5  
SHOWN

				Tolerances (Unless otherwise stated) X ± 0.25 XX ± 1 XXX ± 2				Material AL ALLOY HP 30 Form BLACK ANODISE		Dim in m.m. Scale 1:1		THIRD ANGLE PROJECTION FIRST ANGLE PROJECTION		G.A. No. V/FU/005	
JULY 85				BTH				ROYAL GREENWICH OBSERVATORY, HERSTMONCEUX CASTLE, HAILSHAM		No. Req. 1		Title TV BRACKET		Drawing No. V/FU/005/3	
Issue	Mod No.	Date	Drawn By	Issue	Mod No.	Date	Drawn By	Lead on	Drwg No.	No. Req.	SUSSEX.				



1		COVER	
MATERIAL	AL ALLOY	SCALE	1:1
TOLERANCES	UNLESS OTHERWISE STATED	DATE	JULY
FINISH	AS MANUFACTURED	DRAWN BY	BTH
REGD.	V/FU/005/1	DATE	

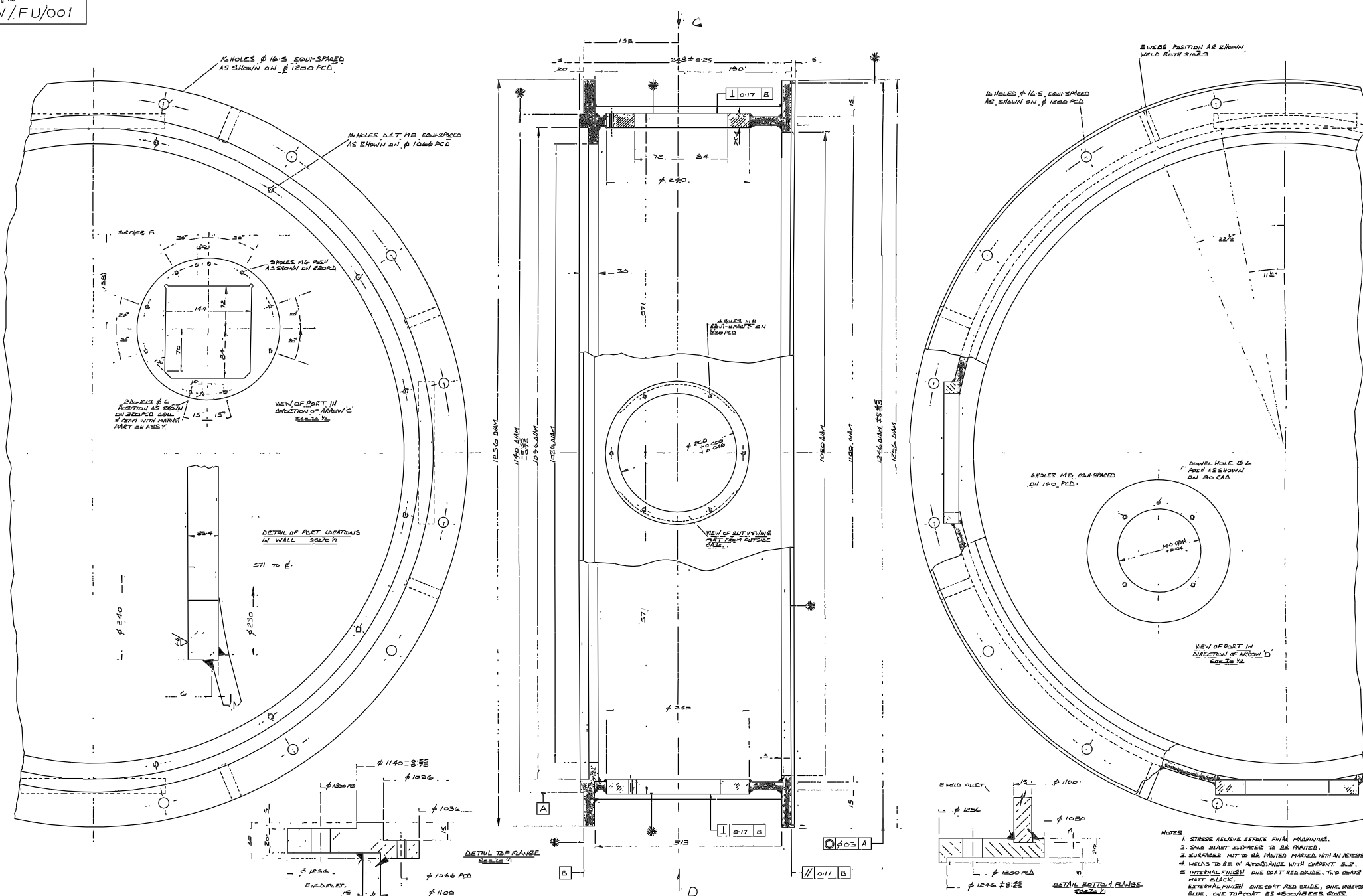
2		SLIDE	
MATERIAL	AL ALLOY	SCALE	1:1
TOLERANCES	UNLESS OTHERWISE STATED	DATE	
FINISH	AS MANUFACTURED	DRAWN BY	RBO
REGD.	V/FU/005/2	DATE	

Tolerances (Unless otherwise stated)						Material		Dimms. in m.m.		Scale 1:1		THIRD ANGLE PROJECTION		G/A No. V/FU 005	
X .1						Finish		ROYAL GREENWICH OBSERVATORY, HERSTMENCEUX CASTLE, HAILSHAM		Title		2.2M DE-SCALED ASSEMBLY		Drawing No	
XX .01						Used on		1		ROYAL GREENWICH OBSERVATORY, HERSTMENCEUX CASTLE, HAILSHAM		TV. MOUNT ASSEMBLY # DETAILS		V/FU/005/1-2	
XXX .001												SUSSEX			
Issue	Mod No.	Date	Drawn By	Issue	Mod No.	Date	Drawn By								









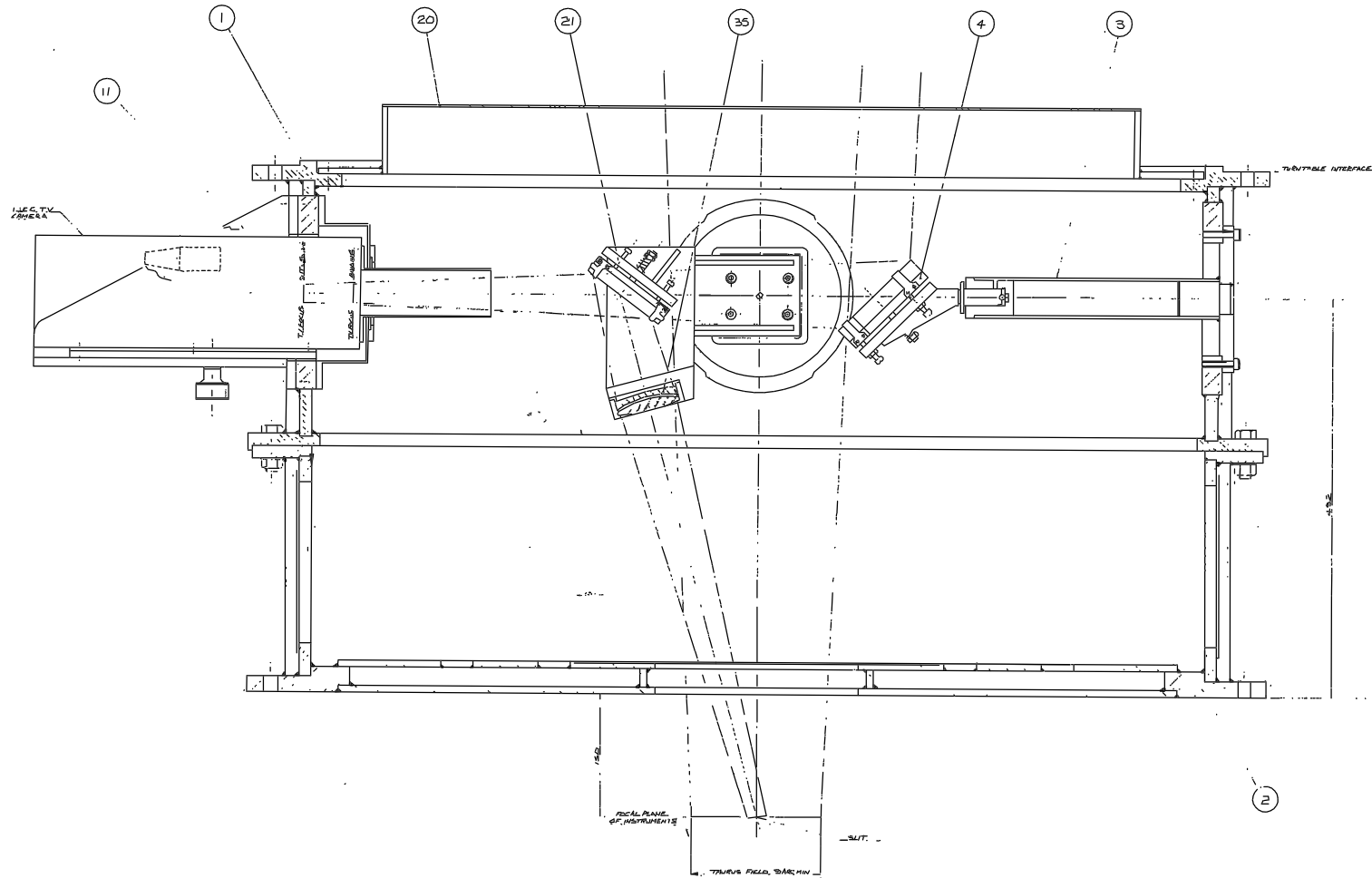
Tolerances (Unless otherwise stated)		Material		Dimm. in mm.		Scale		THIRD ANGLE PROJECTION		G.A. No. V/FU/000	
XX 1		MILD STEEL		ROYAL GREENWICH OBSERVATORY, HERSTMONCEUX CASTLE, HAILSHAM.		1/2 & 1/4		12m DIAMETER GUN TURRET		Drawing No.	
XXX 1		SEE NOTES		SUSSEX.		Used on V/FU/000		DETAIL OF TOP SECTION		V/FU/001	
Issue	Mod No	Date	Drawn By	Issue	Mod No	Date	Drawn By				
				JUNE 55	BTH						

- NOTES:
1. STRESS RELIEVE BEFORE FINAL FINISHING.
  2. SHOW BLAST SURFACES TO BE FINISHED.
  3. SURFACES NOT TO BE FINISHED MARKED WITH AN ASTERISK.
  4. WELDS TO BE IN ACCORDANCE WITH CURRENT B.S.
  5. INTERNAL FINISH: ONE COAT RED OXIDE, TWO COATS MATT BLACK.
  6. EXTERNAL FINISH: ONE COAT RED OXIDE, ONE UNIFORM BLUE, ONE TOPCOAT BS 4800/1800S GLASS.





Drwg No  
V/FU/000



WEIGHT OF UNIT 130 kg

						Tolerances (Unless otherwise stated)		Material		Dimms. in m.m.		Scale 1/2		THIRD ANGLE PROJECTION		G.A. No	
						X ±				ROYAL GREENWICH OBSERVATORY,				4.2M W.H. TELESCOPE		Drawing No	
						XX ±		Finish		HERSTMONCEUX CASTLE,				ASSEMBLY DESCRIBED AS G UNIT		V/FU/000	
						XXX ±		Used on		HAILSHAM							
Issue	Mnd. No.	Date	Drawn By	Issue	Mod. No.	Date	Drawn By										
						NOV 55	BTH										