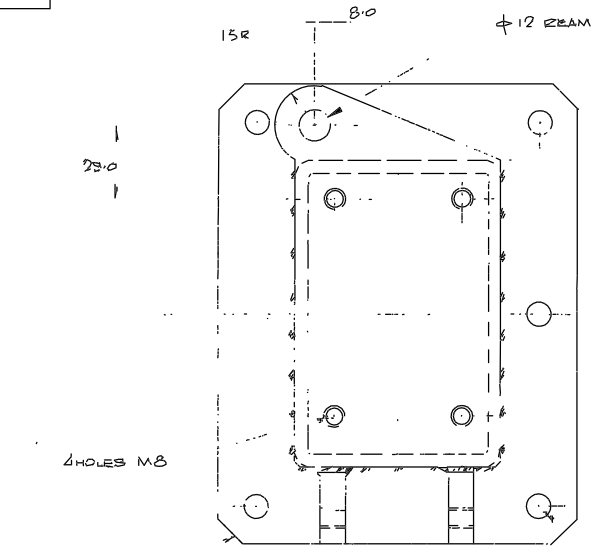
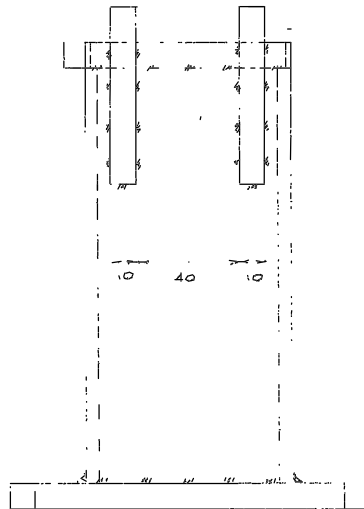
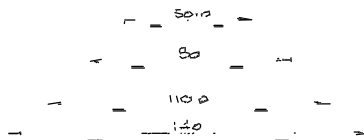


Drawing No.

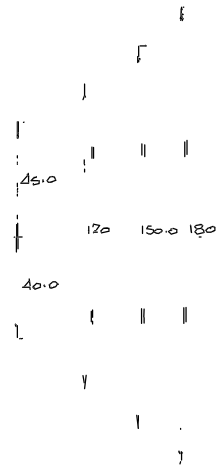
W



CHAMFER 1.0 x 45°

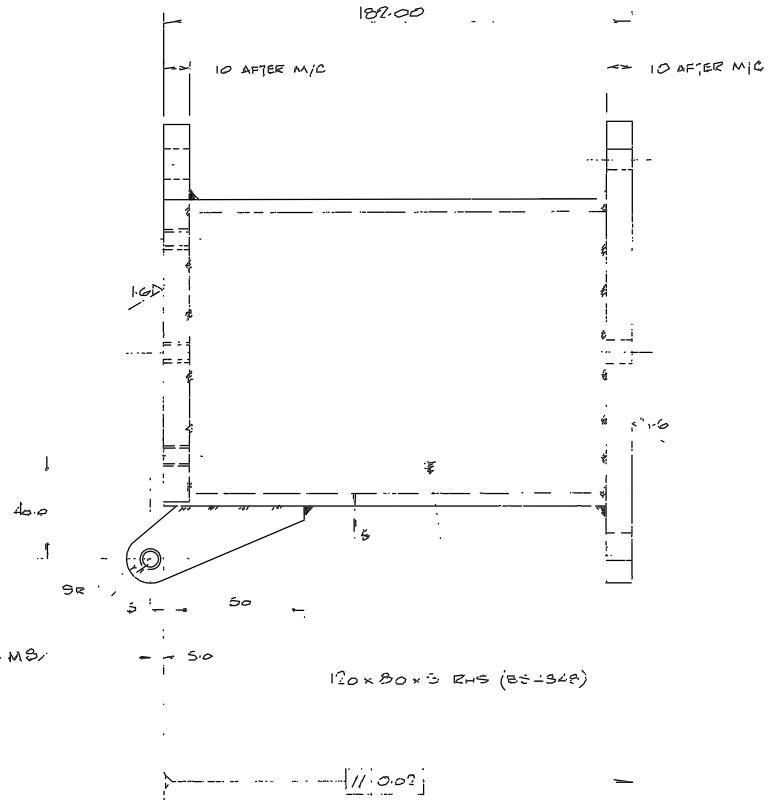


φ 12 REAM



6 HOLES φ 3

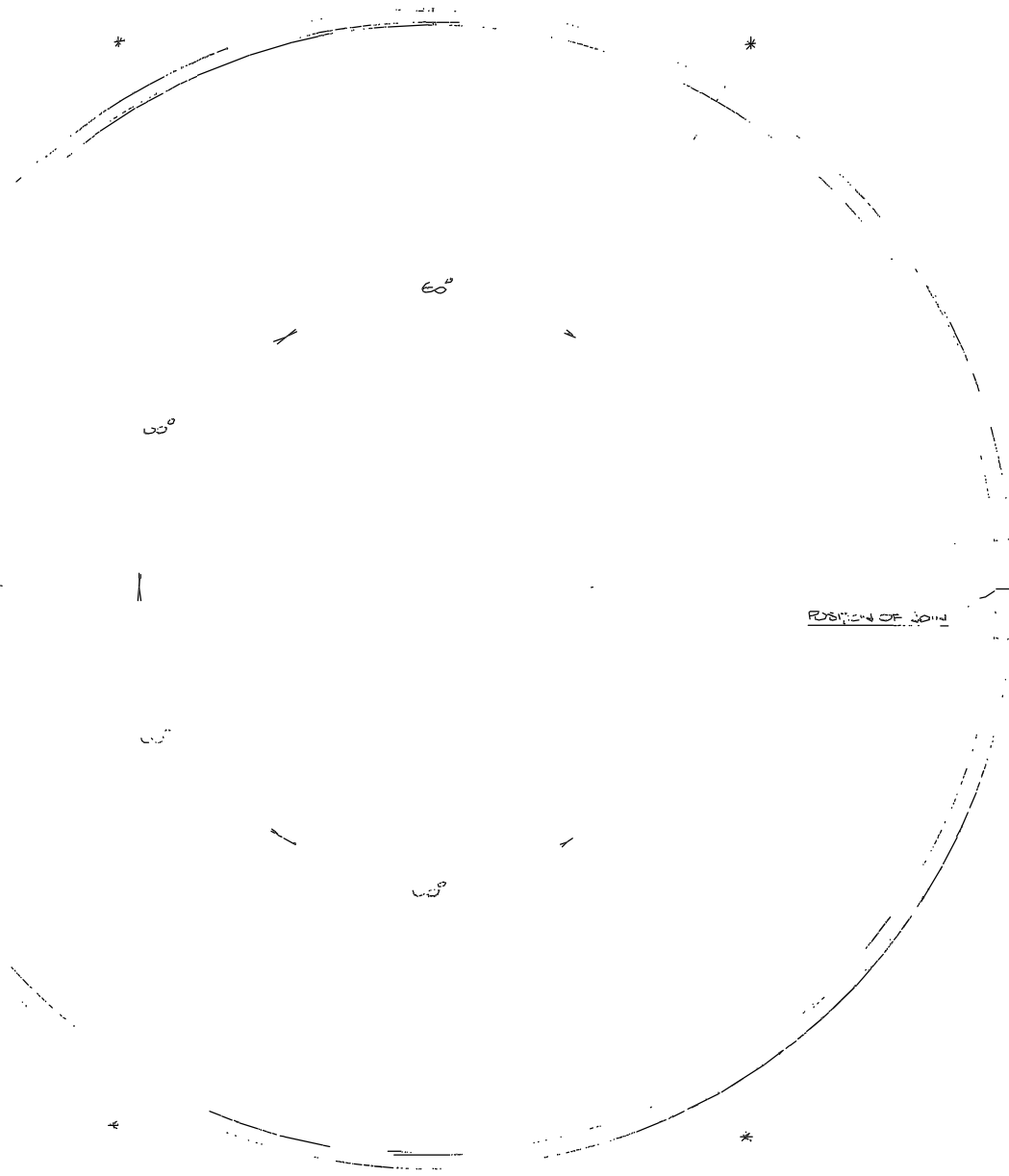
2 HOLES M8



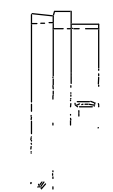
ALL WELDS 4mm (CONTINUOUS FILE) (METAL ARC)
NORMALISE AFTER WELDING & BEFORE M/CING

								Tolerances (Unless otherwise stated)		Material		Dimns in m.m.		Scale FULL SIZE		THIRD ANGLE PROJECTION		G.A. No. V/FZ/125	
								X ±		MID-STEEL BS3701								Drawing No.	
								XX ±		Finish		Dwg. No.		No. Req.		Title		W/FZ/130	
								XXX ±		BLACK NICKEL		Used on		ROYAL GREENWICH OBSERVATORY, HERSTMUNCEUX CASTLE, HAILSHAM SUSSEX.		AUTO GUIDED SCAN DRIVE MOUNTING TELESCOPE		4.2m ACQUISITION (CON) & GUIDE UNIT	
Issue	Mod. No.	Date	Drawn By	Issue	Mod. No.	Date	Drawn By												

Drawing No.
W



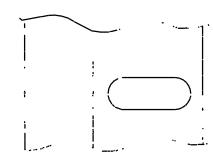
KLEENEZE FORMED BRUSH STD
TYPE ABS BA DEGRON BBS
FLUONS NA** 0.0025" BLACK
N*LOW



EXTENDED CALLER THE DIMENSION

POSITION OF SPIND

* FIRST SURFACE



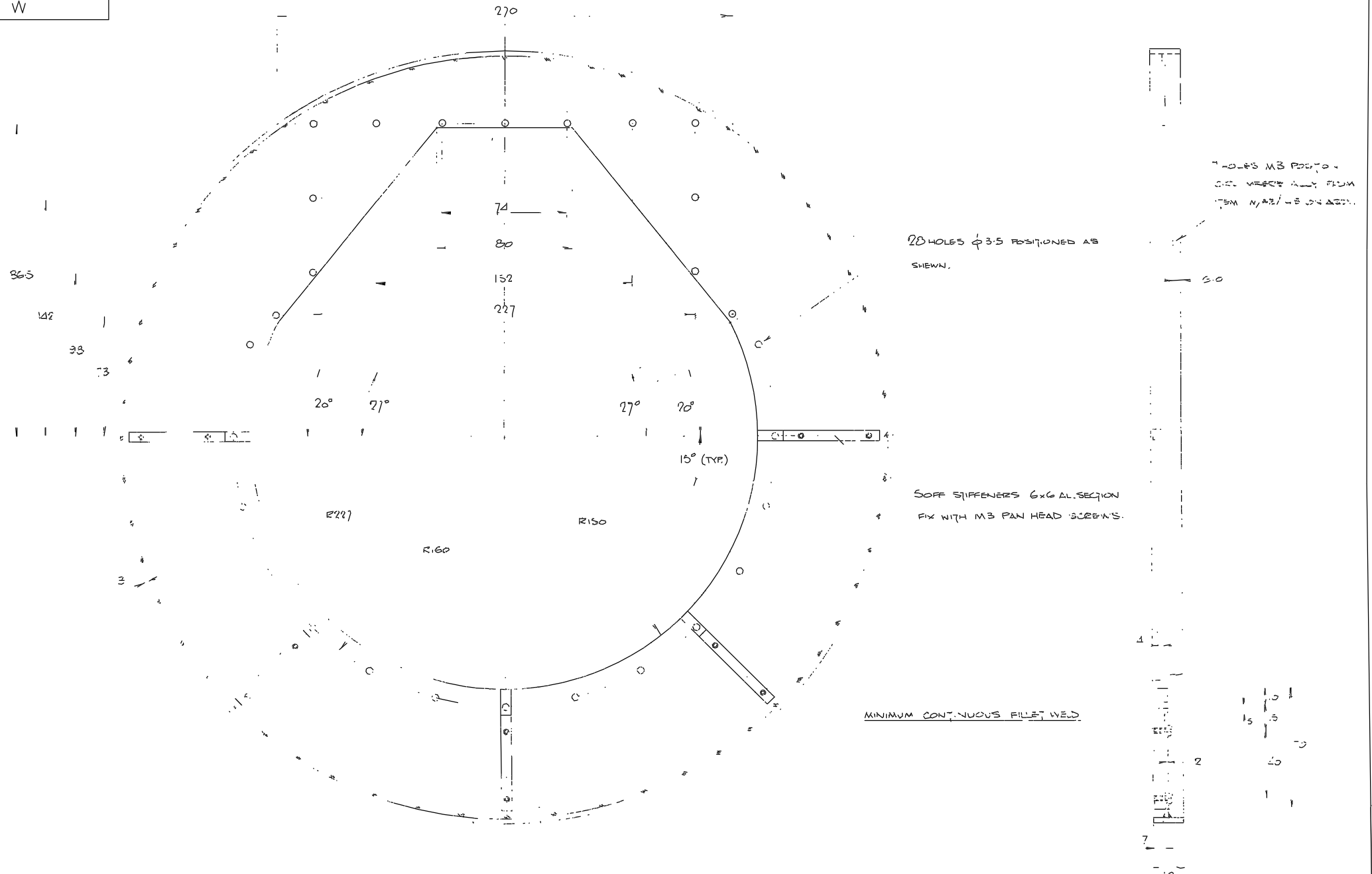
5 mm

50% TYPICAL
1:1



1.26

								Tolerances (Unless otherwise stated)	Material	Dimms In m.m.		Scale	THIRD ANGLE PROJECTION	GA. No.
								X 0.1	Finish					41-0
								XX 0.05		Drg. No.		No. Req.	Title	Drawing No.
Issue	Mod. No.	Date	Drawn By	Issue	Mod. No.	Date	Drawn By		Used on				ROYAL GREENWICH OBSERVATORY, HERSTMENCEUX CASTLE, HAILSHAM SUSSEX.	W.F.Z. 15



7 HOLES M3 PAN HEAD -
ONE WERE ONLY FROM
ITEM N/A2/142 ON ASSY.

20 HOLES $\phi 3.5$ POSITIONED AS
SHOWN.

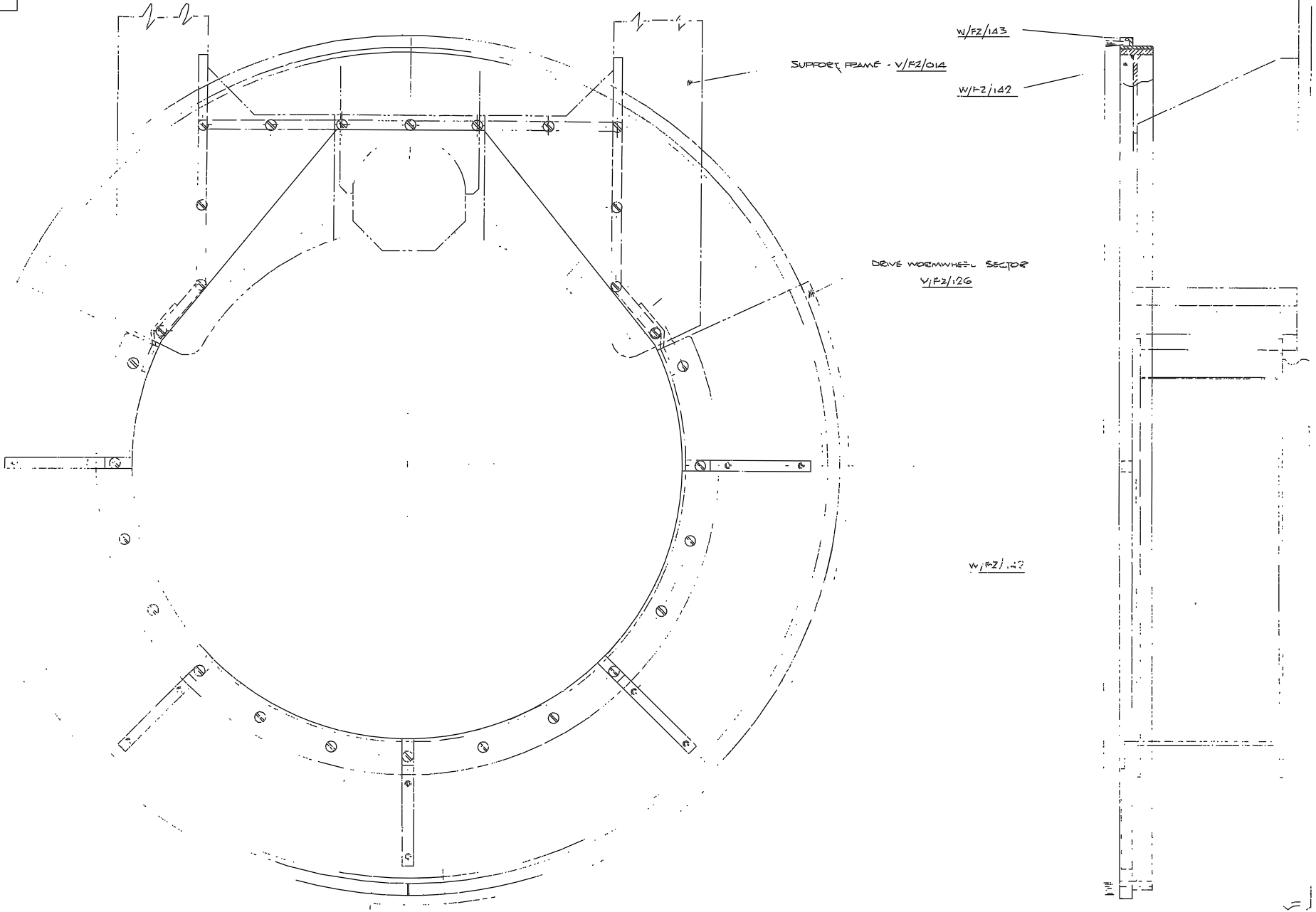
SOFF STIFFENERS 6x6 AL. SECTION
FIX WITH M3 PAN HEAD SCREWS.

MINIMUM CONTINUOUS FILET WELD

								Tolerances (Unless otherwise stated)		Material		Dimns in m.m.		Scale 1:1		THIRD ANGLE PROJECTION		G.A. No.		
								X ±	AL. ALLOY										Drawing No.	
								XX ±	Finish		Drg. No.		No. Req.		Title					
								XXX ±	BLK. ANODIC		Used on				ROYAL GREENWICH OBSERVATORY, HERSTMONCEUX CASTLE, HAILSHAM SUSSEX.		BRUSH SHIP CARRIER - THERMAL SHIELD			
Issue	Mod. No.	Date	Drawn By	Issue	Mod. No.	Date	Drawn By											W/FZ/142		

Drawing No.

W



								Tolerances (Unless otherwise stated)		Material		Dimms in m.m.		Scale FULL		THIRD ANGLE PROJECTION		G.A. No.	
								X ±		Finish		ROYAL GREENWICH OBSERVATORY, HERSTMONGEUX CASTLE, HAILSHAM				Title		Drawing No.	
								X.X ±		Used on		No. Req				SUB-ASSY - THERMAL SEAL		W/FZ/140	
								X.XX ±								Δ.2w AFG UNIT			
Issue	Mod. No.	Date	Drawn By	Issued	Mod. No.	Date	Drawn By												

DRAWING NUMBER	No. of Sheets	G.A. Item No.	DRAWING TITLE OR COMPONENT NAME	QTY	MATERIAL STOCK OR ORDER No. AND DATE	REMARKS	ISSUE DATE	ISSUED TO	FINISH DATE
V/FZ/125	1		O.A.						
V/FZ/126	1	1	DRIVE WORMWHEEL - SECTORED	1	BS1400 FBC				
V/FZ/127	1	2	WORM	1	BS970-212A47				
V/FZ/128	1	3	ANTI-BACKLASH WORMWHEEL	1	BS1400 PR3				
V/FZ/129	1	4	WORM SUPPORT PLATE	1	M/S				
W/FZ/130	1	5	PEDestal	1	M/S				
V/FZ/131	1	6	WORM THRUST BEARING BRKT.	1	M/S				
V/FZ/132	1	7	WORM AXIAL BEARING BRKT.	1	M/S				
V/FZ/133	1	8	ENCODER/AB WORMWHEEL BRKT	1	M/S				
V/FZ/134	1	9	AB WORMWHEEL MOUNT	1	STAINLESS STL				
V/FZ/135	1	10	INNER BEARING CLAMP RING	1	M/S				
V/FZ/136	1	11	OUTER " " "	1	M/S				
V/FZ/137	1	12	ENCODER DRIVE ARM	1	M/S				
V/FZ/138	1	13	PIVOT	1	M/S				
V/FZ/139	1	14	SPACER	1	M/S				
W/FZ/140	1		SUB-ASSY - THERMAL SEAL						
W/FZ/141	1		THERMAL SHIELD	1	AL ALLOY				
W/FZ/142	1		BRUSH STRIP CARRIER	1	"				
W/FZ/143	1		BRUSH STRIP MOUNT	1	"				
		15	STEPPING MOTOR	1	MCS3	SLO-SYN			
		16	ABSOLUTE OPTICAL ROTARY ENCODER	1	ROC 717	HEIDENHAIN			
		17	COUPLING	1	GM 3-12-10	HELI-CAL			
		18	THIN NUT (108 x 1 P/K 11 x 3 THICK)	2	17AIF M/S				
		19	WASHER (7400 x 1010 x 2 THICK)	1	M/S				
		20	THRUST WASHER	2	LS 1024	INA			
		21	THRUST RACE	1	AXK 1024	INA			
		22	THRUST JOURNAL RACE	1	NKX 1027V	INA			
		23	NEEDLE JOURNAL	1	NK 10 2 TN	INA			
		24	BEARING	1	KC040XPO	KAYDON			

JOB TITLE

4.2 ACQUISITION & GUIDER UNIT - E SCAN DRIVE ASSY.

ASSY DRG. No.

V/FZ/125

SHEET No.

1

DRAWN BY

CH

DATE

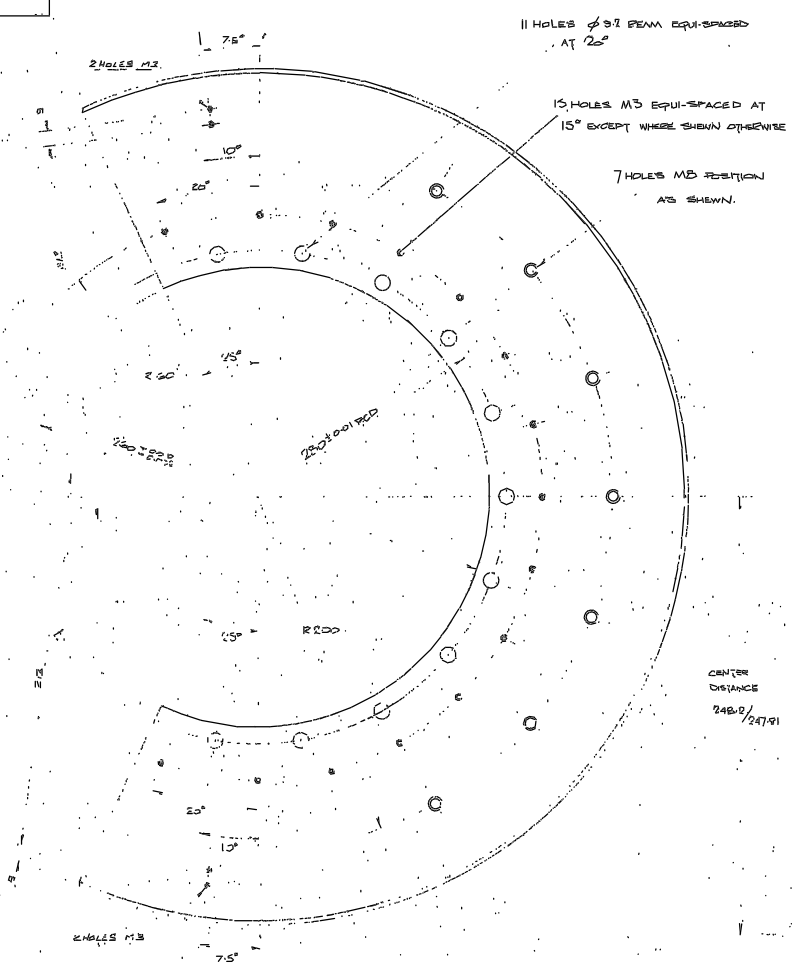
ROYAL GREENWICH OBSERVATORY,

HERSTMONCEIX CASTLE,

HAILSHAM,

SUSSEX

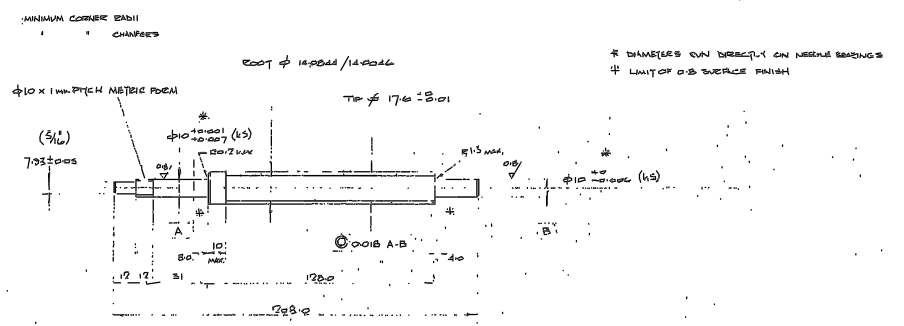
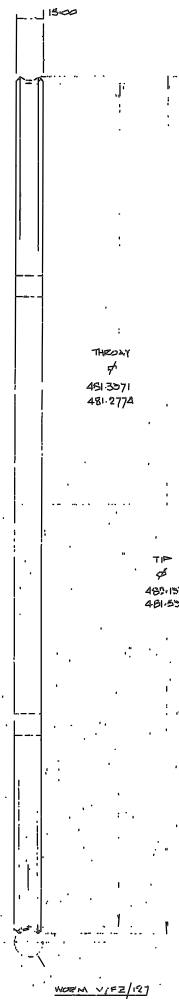
Fig. No
V



MANUFACTURING DATA

NO. OF TEETH (T) 20
 DIAMETER FACTOR (q) 20
 AXIAL MODULE (m) 0.8
 CLASS CLASS A, B2721
 HAND RH
 THREAD FINISH HAGEN & TULIGH
 MATERIAL B7000

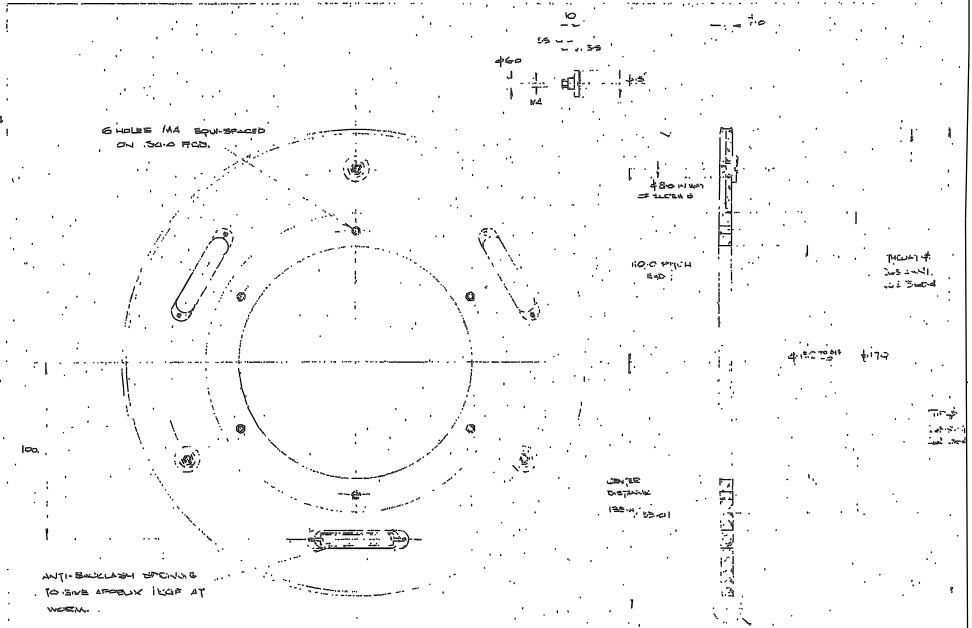
TITLE	
1	DRIVE WORMWHEEL
DATE	SCALE
DESIGNED BY	CHECKED BY
DATE	DATE
BY	BY
DATE	DATE



MANUFACTURING DATA

NO. OF TEETH (T) 38
 DIAMETER FACTOR (q) 20
 AXIAL MODULE (m) 0.8
 CLASS CLASS A, B2721
 HAND RH
 THREAD FINISH HAGEN & TULIGH
 MATERIAL B7000

TITLE	
2	WORM
DATE	SCALE
DESIGNED BY	CHECKED BY
DATE	DATE
BY	BY
DATE	DATE



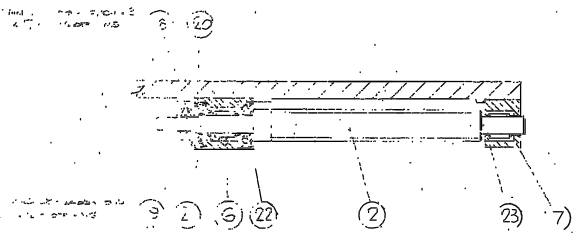
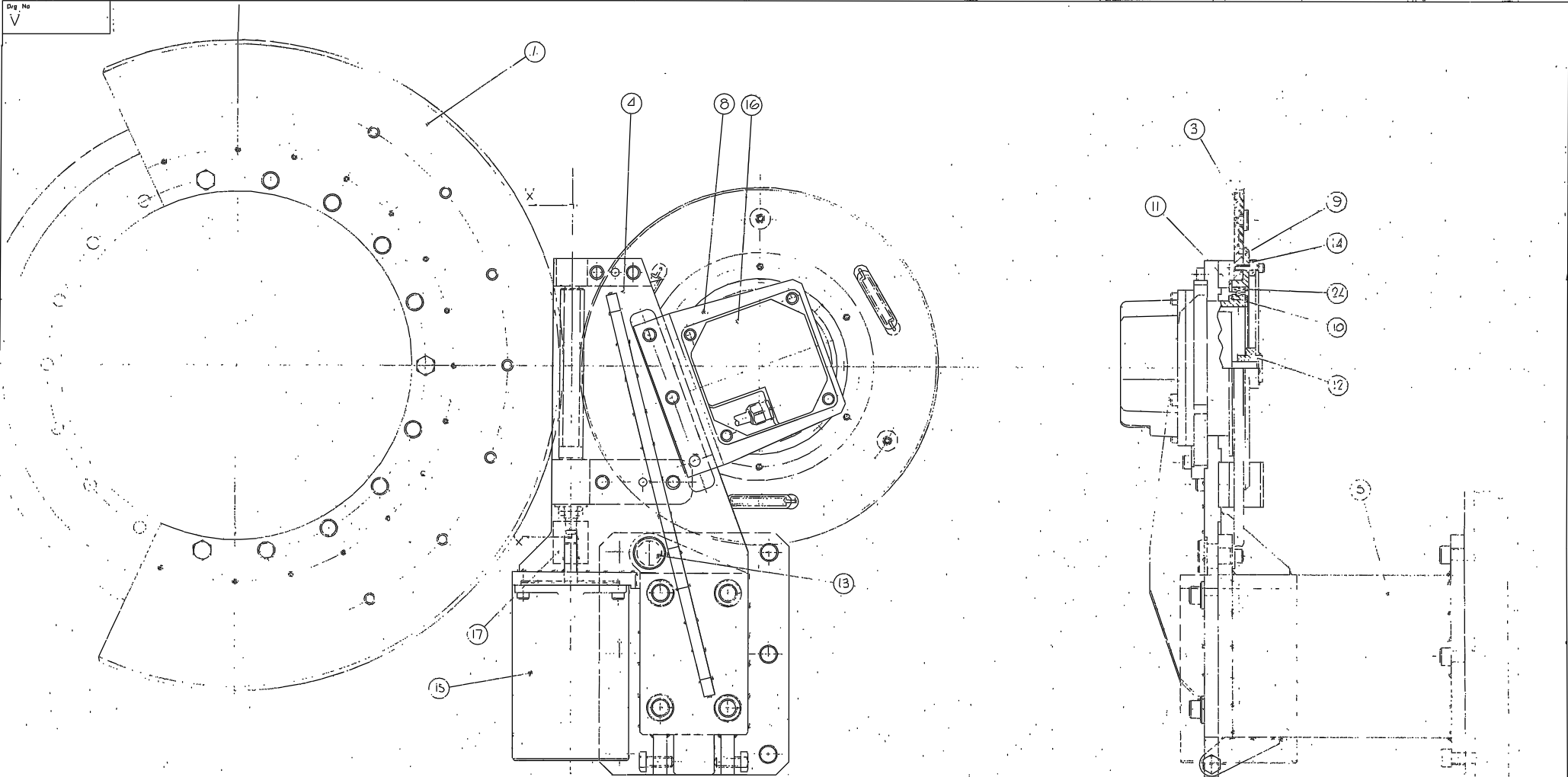
MANUFACTURING DATA

NO. OF TEETH (T) 38
 DIAMETER FACTOR (q) 20
 AXIAL MODULE (m) 0.8
 CLASS CLASS A, B2721
 HAND LH
 BACKLASH ANTI-BACKLASH I.E. SPUT & SPINS
 MATERIAL B7000

TITLE	
3	ENCODER ANTI-BACKLASH WHEEL
DATE	SCALE
DESIGNED BY	CHECKED BY
DATE	DATE
BY	BY
DATE	DATE

Tolerances (Unless otherwise stated)				Material		Dim. in m.m		Scale FULL		THIRD ANGLE PROJECTION		GA No. V/FZ/125	
XXX ±				B7000		ROYAL GREENWICH OBSERVATORY, HERSTMONCEUX CASTLE, HAILSHAM		SUSSEX		AUTOGUIDER PROBE - DRIVE & ENCODER		Drawing No. V/FZ/126-748	
Issue	Mod. No.	Date	Drawn By	Issue	Mod. No.	Date	Drawn By	Used on	No. 748	SEARCHING - DETAILS			

Drig. No
V



SECTION ONLY X WORK ASSY.

										Units: in m.m.		Scale: Full Size		THIRD ANGLE PROJECTION		G.A. No.	
										Finish		Drig. No. No. Rev.		Title		Drawing No.	
Tolerances (Unless otherwise stated)												ROYAL GREENWICH OBSERVATORY, HERSTMONCEUX CASTLE, HAILSHAM		G.A. - AUTOFINDER PROBE & SCAN DRIVE ASSY, 2.2m ACQUISITION & GUIDE UNIT		V/FZ/125	
Issue	Mod. No.	Date	Drawn By	Issue	Mod. No.	Date	Drawn By			Used on							