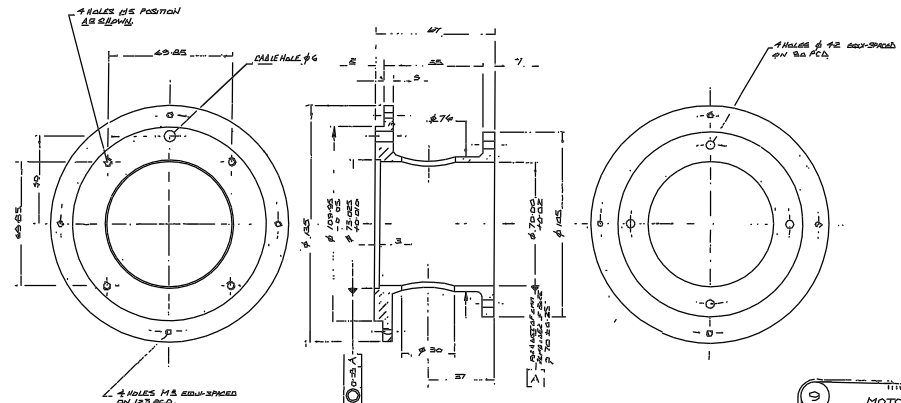
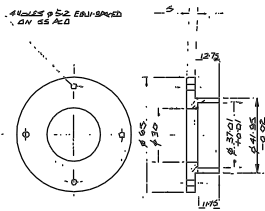


ORDER CASE ART-SF 1/16 IN. S. OBTAINABLE FROM
UNIVERSAL ENGINEERS LTD. BURNVILLE WORKS
120 BURNVILLE ROAD, BURNLEY ROAD LONDON NW3.

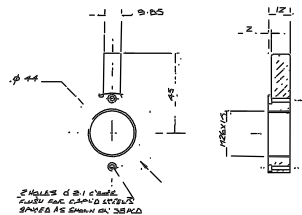
8 BALL SCREW & NUT			
MATERIAL	SCALE	TOLERANCES	
SEE MANUFACTURER	FULL SIZE	1/200	
FINISH	TO MANUFACTURER	1/200	
REVISIONS			
DATE	REVISED BY	DATE	
	R.G.O. V/FV/005/1		



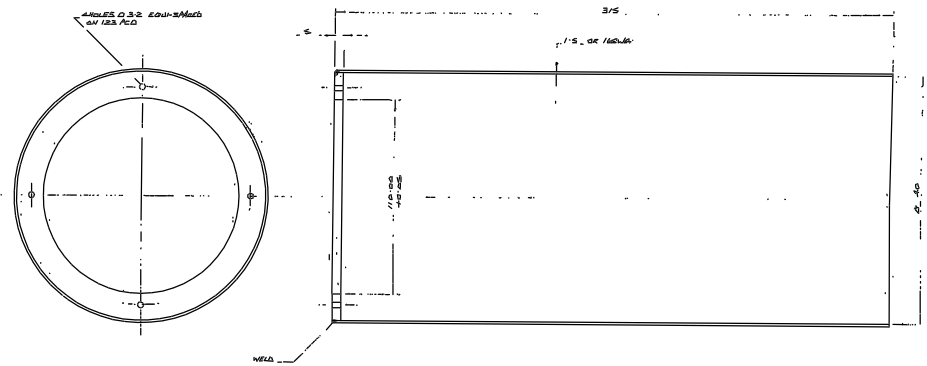
9 MOTOR MOUNT			
MATERIAL	SCALE	TOLERANCES	
AL. ALLOY	FULL SIZE	1/200	
FINISH	TO MANUFACTURER	1/200	
REVISIONS			
DATE	REVISED BY	DATE	
	R.G.O. V/FV/005/2		



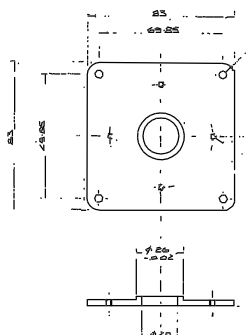
10 BEARING KEEP			
MATERIAL	SCALE	TOLERANCES	
AL. ALLOY	FULL SIZE	1/200	
FINISH	TO MANUFACTURER	1/200	
REVISIONS			
DATE	REVISED BY	DATE	
	R.G.O. V/FV/005/3		



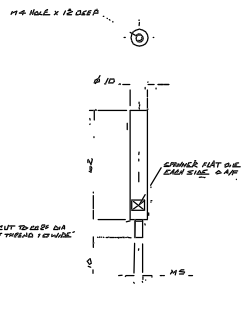
11 BALL NUT LOCATOR			
MATERIAL	SCALE	TOLERANCES	
BRASS/STAINLESS STEEL	FULL SIZE	1/200	
FINISH	TO MANUFACTURER	1/200	
REVISIONS			
DATE	REVISED BY	DATE	
	R.G.O. V/FV/005/4		



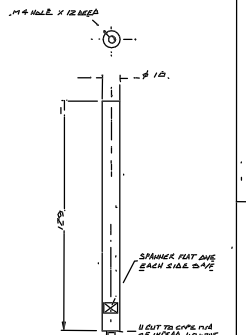
15 COVER			
MATERIAL	SCALE	TOLERANCES	
AL. ALLOY	FULL SIZE	1/200	
FINISH	TO MANUFACTURER	1/200	
REVISIONS			
DATE	REVISED BY	DATE	
	R.G.O. V/FV/005/5		



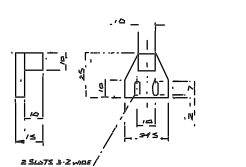
12 CLAMP MOUNTING PART			
MATERIAL	SCALE	TOLERANCES	
AL. ALLOY	FULL SIZE	1/200	
FINISH	TO MANUFACTURER	1/200	
REVISIONS			
DATE	REVISED BY	DATE	
	R.G.O. V/FV/005/5		



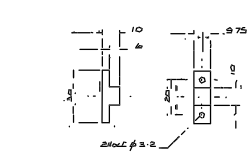
13 PILLAR TYPE M001			
MATERIAL	SCALE	TOLERANCES	
BRASS/STAINLESS STEEL	FULL SIZE	1/200	
FINISH	TO MANUFACTURER	1/200	
REVISIONS			
DATE	REVISED BY	DATE	
	R.G.O. V/FV/005/6		



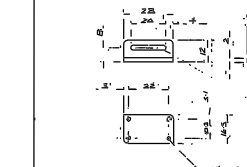
14 PILLAR TYPE M003			
MATERIAL	SCALE	TOLERANCES	
BRASS/STAINLESS STEEL	FULL SIZE	1/200	
FINISH	TO MANUFACTURER	1/200	
REVISIONS			
DATE	REVISED BY	DATE	
	R.G.O. V/FV/005/7		



16 ADJUSTABLE STOP			
MATERIAL	SCALE	TOLERANCES	
MILD STEEL	FULL SIZE	1/200	
FINISH	TO MANUFACTURER	1/200	
REVISIONS			
DATE	REVISED BY	DATE	
	R.G.O. V/FV/005/8		



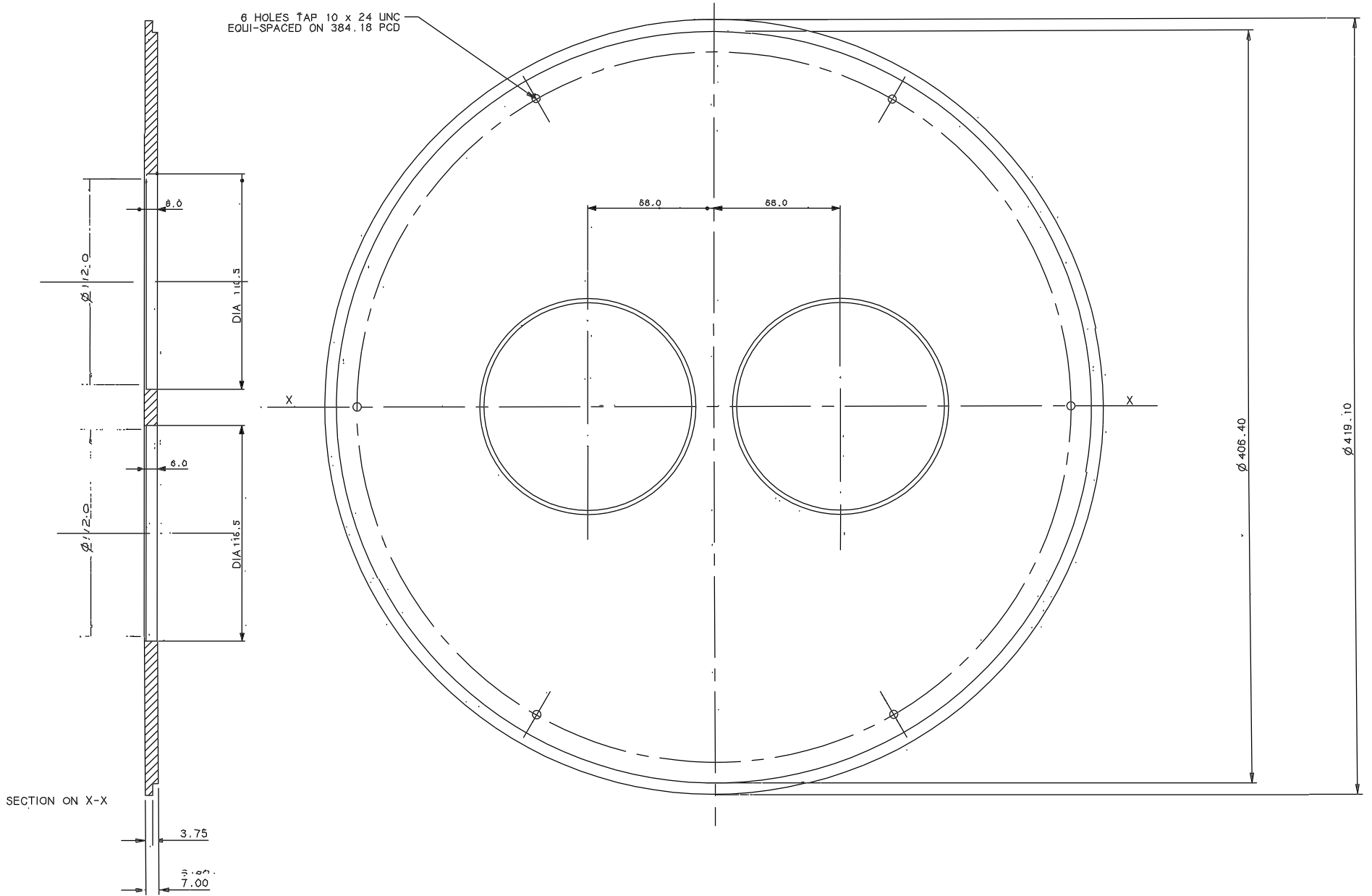
17 FIXED STOP			
MATERIAL	SCALE	TOLERANCES	
MILD STEEL	FULL SIZE	1/200	
FINISH	TO MANUFACTURER	1/200	
REVISIONS			
DATE	REVISED BY	DATE	
	R.G.O. V/FV/005/10		



18 PROXIMITY SWITCH BRACKET			
MATERIAL	SCALE	TOLERANCES	
AL. ALLOY	FULL SIZE	1/200	
FINISH	TO MANUFACTURER	1/200	
REVISIONS			
DATE	REVISED BY	DATE	
	R.G.O. V/FV/005/11		

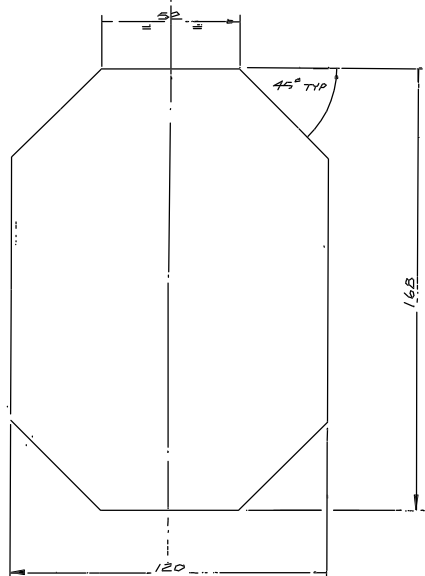
DRAWING NUMBER	No. of Sheets	G.A. Item No.	DRAWING TITLE OR COMPONENT NAME	No. of	MATERIAL STOCK OR ORDER No. AND DATE	REMARKS	ISSUE DATE	ISSUED TO	FINISH DATE	
V/FV/001			PROBE FOR SLITVIEWING & SMALL F.O.F. FLAT	1 OFF EACH		ASSEMBLY				
W/FV/002		1	BEARING HOUSING CASTING DRG	1						
W/FV/003		2	BEARING HOUSING MACH. DRG	2						
V/FV/004/1		3	QUILL	2						
V/FV/004/2		4	BALL SCREW SUPPORT	2						
V/FV/004/3		5	BALL NUT HOUSING	2						
V/FV/004/4		6	BALL NUT SLEEVE	2						
V/FV/004/5		7	BALL NUT KEEP	2						
V/FV/005/1		8	BALL SCREW & NUT	2	BRT-SF 16x5	UNIMATIC ENR.				
V/FV/005/2		9	MOTOR MOUNT	2						
V/FV/005/3		10	BEARING KEEP	2						
V/FV/005/4		11	BALL NUT LOCATER	2						
V/FV/005/5		12	CLAMP MOUNTING PLATE	1						
V/FV/005/6		13	PILLAR TYPE M091	4						
V/FV/005/7		14	PILLAR TYPE M093	4						
V/FV/005/8		15	COVER	2						
V/FV/005/9		16	ADJUSTABLE STOP	4						
V/FV/005/10		17	FIXED STOP	2						
V/FV/005/11		18	PROXIMITY SWITCH BKT	4						
V/FV/006/1		19	PRESSURE PLATE	2						
V/FV/006/2		20	PLUG	2						
V/FV/006/3		21	LENS CELL	1						
V/FV/006/4		22	BEZEL	1						
V/FV/006/5		23	BACKING PLATE SLITVIEWING MIRROR	1						
V/FV/006/6		24	BACKING PLATE SMALL F.O.F. FLAT	1						
V/FV/006/7		25	STUD	2						
V/FV/006/8		26	KEEP	2						
V/FV/006/9		27	CLIP	8						
V/FV/006/10		28	LENS SPACER	1						
V/FV/006/11		29	SHAFT EXTENSION	2						
V/FV/007/1		30	BRACKET F.O.F. FLAT	1						
V/FV/007/2		31	BRACKET SLIT VIEWER	1						
W/FV/008/1		32	MIRROR	1						
W/FV/008/2		33	SLIT VIEWING RELAY	1 PAIR						
W/FV/008/3		34	MIRROR	1						
V/FV/007/3		35	RETAINING RING	1						
JOB TITLE					4-2M A23 UNIT SMALL PROBE ASSEMBLY		ASSY DRG. No.		SHEET No.	DRAWN BY
PROBE FOR SLIT VIEWING & SMALL FIBRE OPTIC FEED FLAT					V/FV/ - 1		1 of 2		DATE	BTH
ROYAL GREENWICH OBSERVATORY,					HERSTMONCEUX CASTLE,		HAILSHAM,		SUSSEX	JAN 86

Drawing No.
W /FV/008B



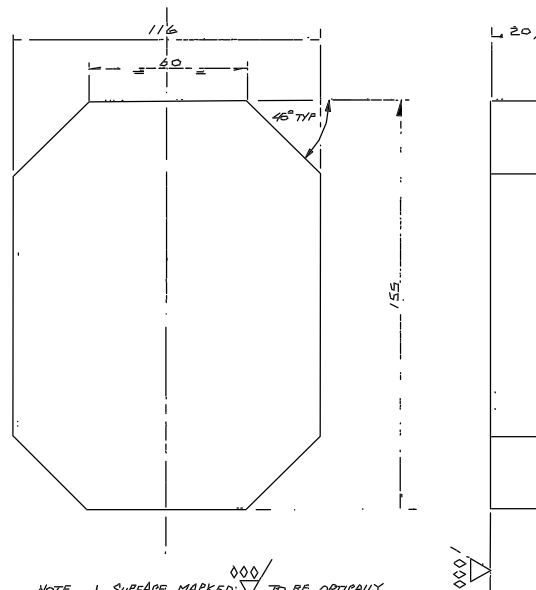
MATERIAL : AUSTENITIC G321 ST. STL.

								Tolerance (Unless otherwise stated)		Material		Dimns. in m.m.		Scale 1:1		THIRD ANGLE PROJECTION		GA No.	
								X +/-		SEE NOTE		1		ROYAL GREENWICH OBSERVATORY		Title		Drawing No.	
								X.X +/-		Finish		Drg. No.		HERSTMONCEUX CASTLE		OPTICS COATING PLATE		4.2 A&G	
								X.XX +/- 0.1		CLEAN		Used on		HAILSHAM SUSSEX		FOR SLIT RELAY		W /FV/008B	
Issue	Mod. No.	Date	Drawn by	Issue	Mod. No.	Date	Drawn by												
				1		JAN 88	BTH												



NOTE 1. SURFACE MARKED $\diamond\diamond\diamond$ TO BE OPTIONALLY POLISHED AND FLAT TO $\frac{1}{2}$ FRINGE.
 2. ALL OTHER SURFACES TO BE FINE GREY.
 3. CHAMFER EDGES 0.5 X 45°

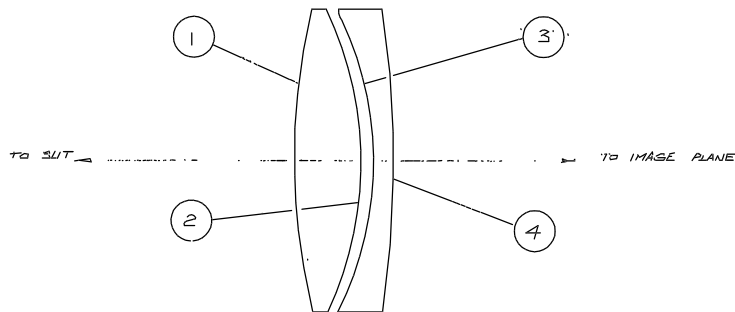
TITLE		
32	MIRROR	SMALL FEED FLAT
MATERIAL	SCALE	TOLERANCES
DURAN 50	FULL SIZE	X ± 0.25
FINISH	NO REQ. PER UNIT	XX \pm
SEE NOTE	1	XXX \pm
G.A. No.	DRAWING No.	
	R.G.O. W/FV/008/1	



NOTE 1. SURFACE MARKED $\diamond\diamond\diamond$ TO BE OPTICALLY POLISHED AND FLAT TO $\frac{1}{4}$ FRINGE.
 2. ALL OTHER SURFACES TO BE FINE GREY
 3. CHAMFER EDGES 0.5 X 45°

TITLE		
34	MIRROR	SLIT VIEWING
MATERIAL	SCALE	TOLERANCES
DURAN 50	FULL SIZE	X ± 0.25
FINISH	NO REQ. PER UNIT	XX \pm
SEE NOTE	1	XXX \pm
G.A. No.	DRAWING No.	
	R.G.O. W/FV/008/3	

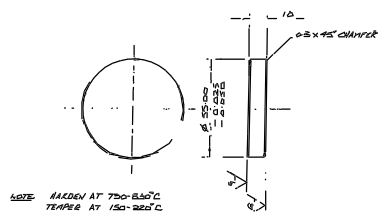
SURFACE NO.	RADIUS OF AXIAL CURVATURE SEPARATION	CLEAR DIA.	REFLECT.	FULL DIAM.
SLIT		586.4	AIR	
1	247.6	25	SKS	116
2	36.08	111	AIR	116
3	129.04	108	SF5	116
4	370.99	108	AIR	116
IMAGE PLANE		585.5		



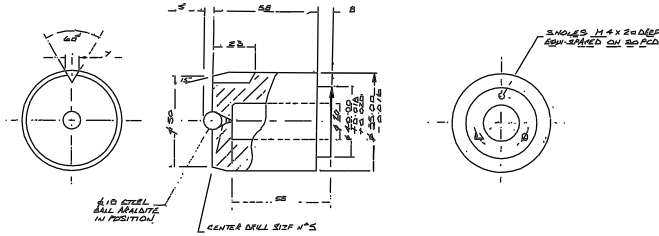
TITLE		
33	SLIT VIEWING RELAY	
MATERIAL	SCALE	TOLERANCES
SEE LEGEND	FULL SIZE	X ± 0.10
FINISH	NO REQ. PER UNIT	XX \pm
OPTICALLY POLISH	1 SET	XXX \pm
G.A. No.	DRAWING No.	
	R.G.O. W/FV/008/2	

Tolerances (Unless otherwise stated)								Material		Dimms in m.m.		Scale		THIRD ANGLE PROJECTION		G.A. No.	
X \pm								ROYAL GREENWICH OBSERVATORY,		Scale		THIRD ANGLE PROJECTION		G.A. No.			
XX \pm								HERSTMONCEUX CASTLE,		Scale		THIRD ANGLE PROJECTION		G.A. No.			
XXX \pm								HAILSHAM		Scale		THIRD ANGLE PROJECTION		G.A. No.			
SUSSEX.								Title		THIRD ANGLE PROJECTION		G.A. No.		W/FV/008			
Issued								Title		THIRD ANGLE PROJECTION		G.A. No.		W/FV/008			
Mod. No.								Title		THIRD ANGLE PROJECTION		G.A. No.		W/FV/008			
Date								Title		THIRD ANGLE PROJECTION		G.A. No.		W/FV/008			
Drawn By								Title		THIRD ANGLE PROJECTION		G.A. No.		W/FV/008			
Issue								Title		THIRD ANGLE PROJECTION		G.A. No.		W/FV/008			
Mod. No.								Title		THIRD ANGLE PROJECTION		G.A. No.		W/FV/008			
Date								Title		THIRD ANGLE PROJECTION		G.A. No.		W/FV/008			
Drawn By								Title		THIRD ANGLE PROJECTION		G.A. No.		W/FV/008			

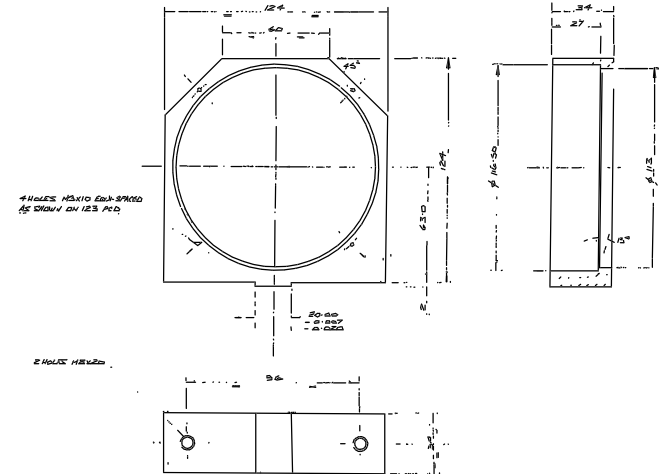
Dwg No
V/FV/006



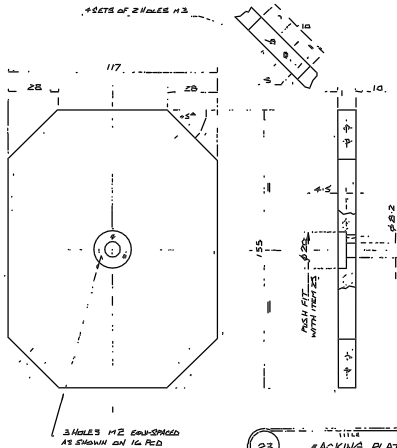
19 PRESSURE PLATE		
MATERIAL	SCALE	TOLERANCES
AL ALLOY	FULL SIZE	± 0.02
FINISH	PER UNIT	SEE NOTE
BL. ANODISE	SEE NOTE	SEE NOTE
DR. NO.	REVISED BY	DATE
	R.G.D.	V/FV/006/1



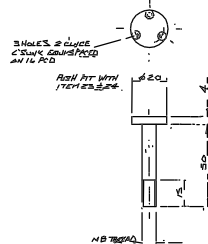
20 PLUG		
MATERIAL	SCALE	TOLERANCES
AL ALLOY	FULL SIZE	± 0.02
FINISH	PER UNIT	SEE NOTE
BL. ANODISE	SEE NOTE	SEE NOTE
DR. NO.	REVISED BY	DATE
	R.G.D.	V/FV/006/2



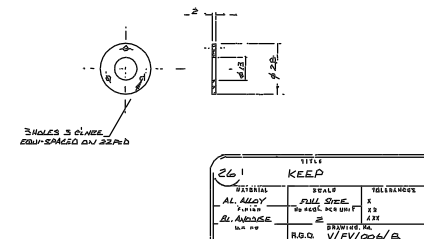
21 LENS CELL		
MATERIAL	SCALE	TOLERANCES
AL ALLOY	FULL SIZE	± 0.02
FINISH	PER UNIT	SEE NOTE
BL. ANODISE	SEE NOTE	SEE NOTE
DR. NO.	REVISED BY	DATE
	R.G.D.	V/FV/006/3



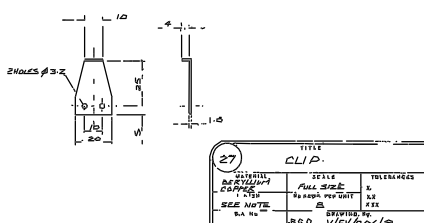
23 BACKING PLATE		
MATERIAL	SCALE	TOLERANCES
AL ALLOY	FULL SIZE	± 0.02
FINISH	PER UNIT	SEE NOTE
BL. ANODISE	SEE NOTE	SEE NOTE
DR. NO.	REVISED BY	DATE
	R.G.D.	V/FV/006/5



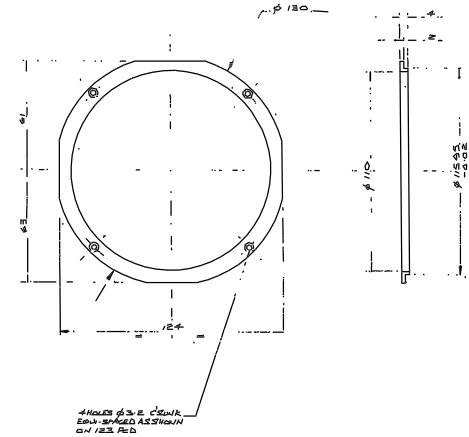
25 STUD		
MATERIAL	SCALE	TOLERANCES
AL ALLOY	FULL SIZE	± 0.02
FINISH	PER UNIT	SEE NOTE
BL. ANODISE	SEE NOTE	SEE NOTE
DR. NO.	REVISED BY	DATE
	R.G.D.	V/FV/006/7



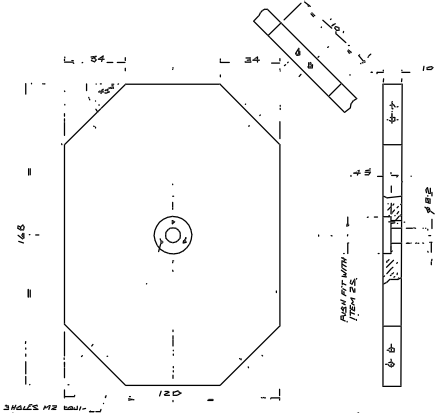
26 CLIP		
MATERIAL	SCALE	TOLERANCES
AL ALLOY	FULL SIZE	± 0.02
FINISH	PER UNIT	SEE NOTE
BL. ANODISE	SEE NOTE	SEE NOTE
DR. NO.	REVISED BY	DATE
	R.G.D.	V/FV/006/8



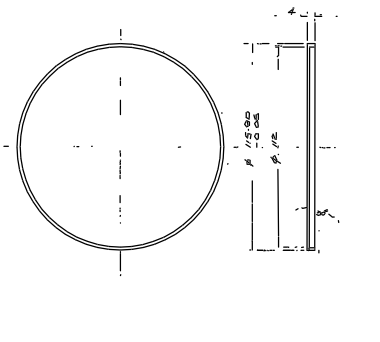
27 SHIRT EXTENSION		
MATERIAL	SCALE	TOLERANCES
AL ALLOY	FULL SIZE	± 0.02
FINISH	PER UNIT	SEE NOTE
BL. ANODISE	SEE NOTE	SEE NOTE
DR. NO.	REVISED BY	DATE
	R.G.D.	V/FV/006/9



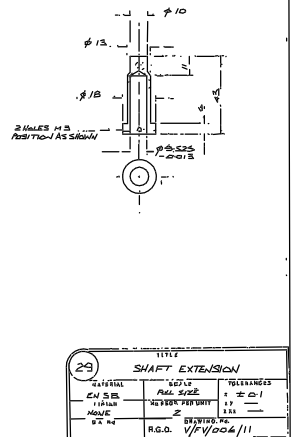
22 BEZEL		
MATERIAL	SCALE	TOLERANCES
AL ALLOY	FULL SIZE	± 0.02
FINISH	PER UNIT	SEE NOTE
BL. ANODISE	SEE NOTE	SEE NOTE
DR. NO.	REVISED BY	DATE
	R.G.D.	V/FV/006/4



24 BACKING PLATE		
MATERIAL	SCALE	TOLERANCES
AL ALLOY	FULL SIZE	± 0.02
FINISH	PER UNIT	SEE NOTE
BL. ANODISE	SEE NOTE	SEE NOTE
DR. NO.	REVISED BY	DATE
	R.G.D.	V/FV/006/6



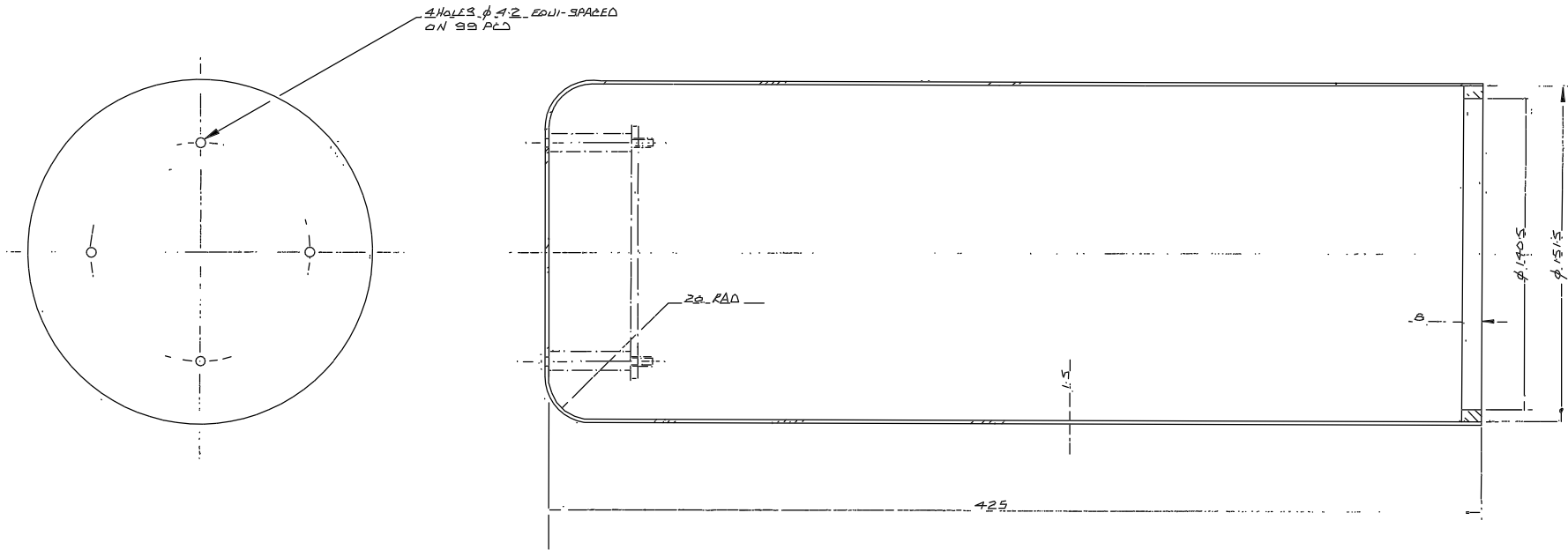
28 LENS SPACER		
MATERIAL	SCALE	TOLERANCES
AL ALLOY	FULL SIZE	± 0.02
FINISH	PER UNIT	SEE NOTE
BL. ANODISE	SEE NOTE	SEE NOTE
DR. NO.	REVISED BY	DATE
	R.G.D.	V/FV/006/10



29 SHIRT EXTENSION		
MATERIAL	SCALE	TOLERANCES
AL ALLOY	FULL SIZE	± 0.02
FINISH	PER UNIT	SEE NOTE
BL. ANODISE	SEE NOTE	SEE NOTE
DR. NO.	REVISED BY	DATE
	R.G.D.	V/FV/006/11

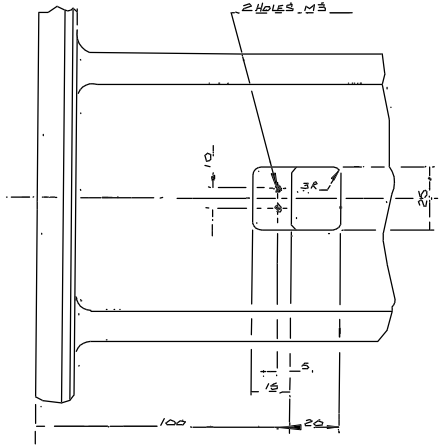
Tolerances (Unless otherwise stated)		Material		Finish		Dimes, in m.m.		Scale		Title		D.A. No.	
X 1													
XX 1													
XXX 1													
Issue	Mod No.	Date	Drawn By	Issue	Mod No.	Date	Drawn By	Dwg. No.	No. Req	ROYAL GREENWICH OBSERVATORY, HERSTMONCEUX CASTLE, HAILSHAM SUSSEX.	Third ANGLE PROJECTION 1:24 A2B UNIT CASEI SMALL PAPER DETAILS	Drawing No. V/FV/006	

Drawing No.
W/FV/005/8

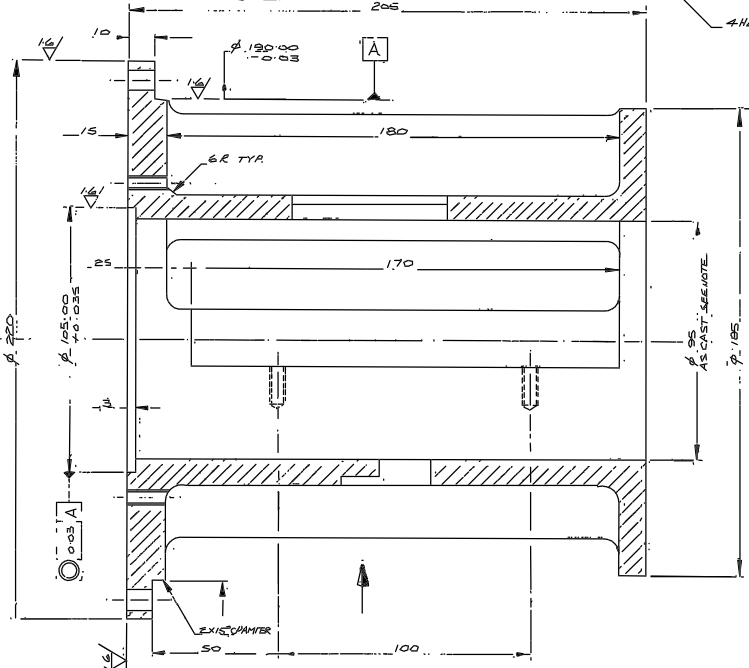
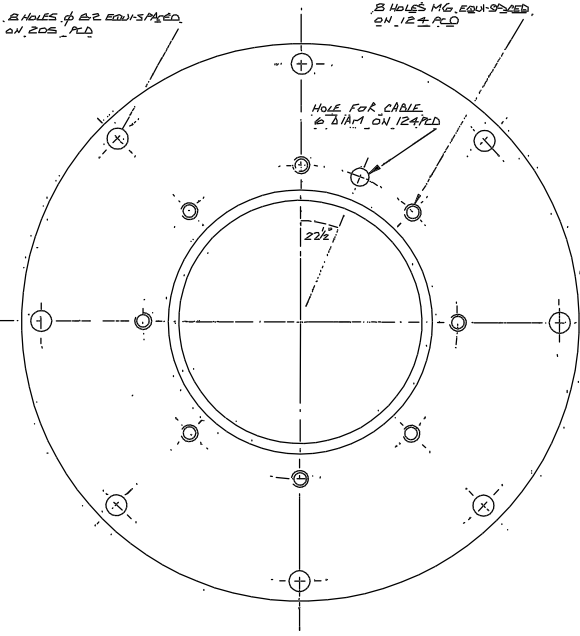
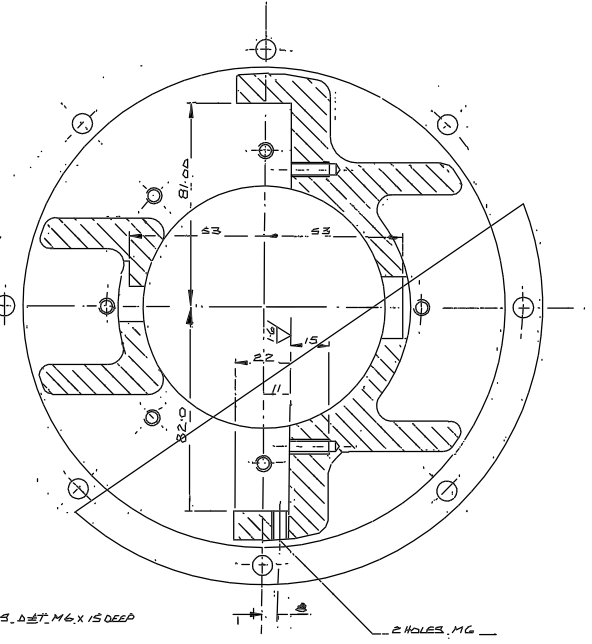
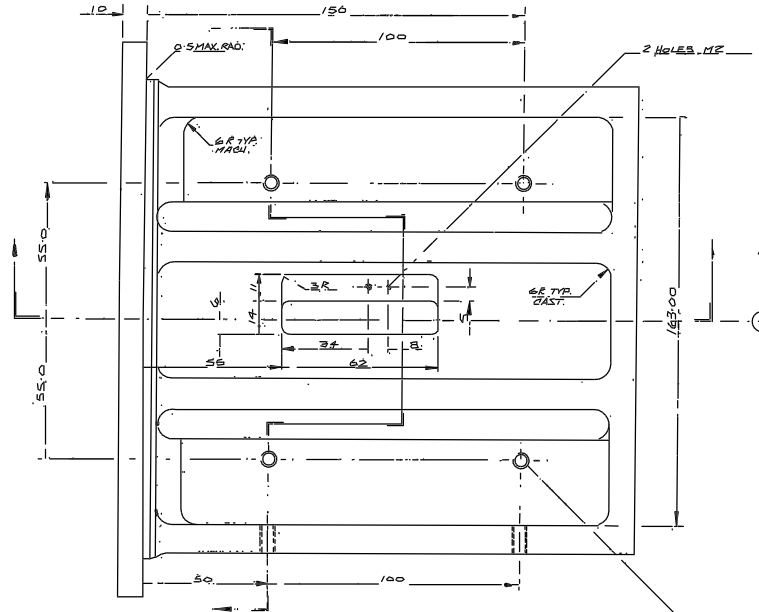


								Tolerances (Unless otherwise stated)		Material <i>AL. ALLOY</i>		Dim's in m.m.		Scale <i>1:1</i>		THIRD ANGLE PROJECTION		G.A. No.	
								X ±		Finish <i>BL. ANODISE</i>		ROYAL GREENWICH OBSERVATORY, HERSTMONCEUX CASTLE, HAILSHAM SUSSEX.		Title <i>SMALL PROBE 42x6 UNIT COVER</i>		Drawing No. <i>W/FV/005/8</i>			
Issue	Mod. No.	Date	Drawn By	Issue	Mod. No.	Date	Drawn By			2									

DRAWING NUMBER	No. of Sheets	G.A. Item No.	DRAWING TITLE OR COMPONENT NAME	Qty	MATERIAL STOCK OR ORDER No. AND DATE	REMARKS	ISSUE DATE	ISSUED TO	FINISH DATE	
		36	MOTOR M091-FC06E	1	SLOSYN					
		37	MOTOR M093-FC07E	1	SLOSYN					
		38	BRAKE A1-41-049	1	SIMPPLATROLL					
		39								
		40	COUPLING A005/12/10	2	HELICAL					
		41	STEEL BALL BEARING 10% D	2						
		42	ROSE BEARING MAF 8 ^{287.2217}	2						
		43	PROXIMITY SWITCH	4	RADIO SPARES					
		44	COMPRESSION SPRING 13% D, 1% D, FREEL. 50	2	TERRY SPRINGS					
		45	BELVILLE WASHER AM = S2213	8		MINIMIZE TO PART 452213				
		46	DEEP GROOVE BEARING SKF 6301	2						
		47	RECIRCULATING BALL UNITS SKD 9150	2	DYNAMIC ENB.					
		48								
		49	SOCKET HD. CAP SCREW M6 X 35 LONG	8		IT. 41177 AN 10000L				
		50	SOCKET HD CAP SCREW M6 X 25 LONG	3		IT. 41177 AN 10000L				
		51	SOCKET HD CAP SCREW M8 X 35 LONG	8		IT. 41177 AN 10000L				
		52	SOCKET HD CAP SCREW M6 X 20 LONG	6		IT. 41177 AN 10000L				
		53	SOCKET HD CAP SCREW M6 X 30 LONG	8		IT. 41177 AN 10000L				
		54	SOCKET HD CAP SCREW M4 X 15 LONG	8		IT. 41177 AN 10000L				
		55	SOCKET HD CAP SCREW M4 X 20 LONG	6		IT. 41177 AN 10000L				
JOB TITLE	4.2M AEG UNIT SMALL PROBE ASSEMBLY					ASSY DRG. No.	SHEET No.	DRAWN BY BTH		
	PROBE FOR SLIT VIEWING & SMALL FIBRE OPTIC FEED FLAT					V/FV/	2 of 2	DATE JAN 86		
	ROYAL GREENWICH OBSERVATORY, HERSTMONCEUX CASTLE, HAILSHAM, SUSSEX									



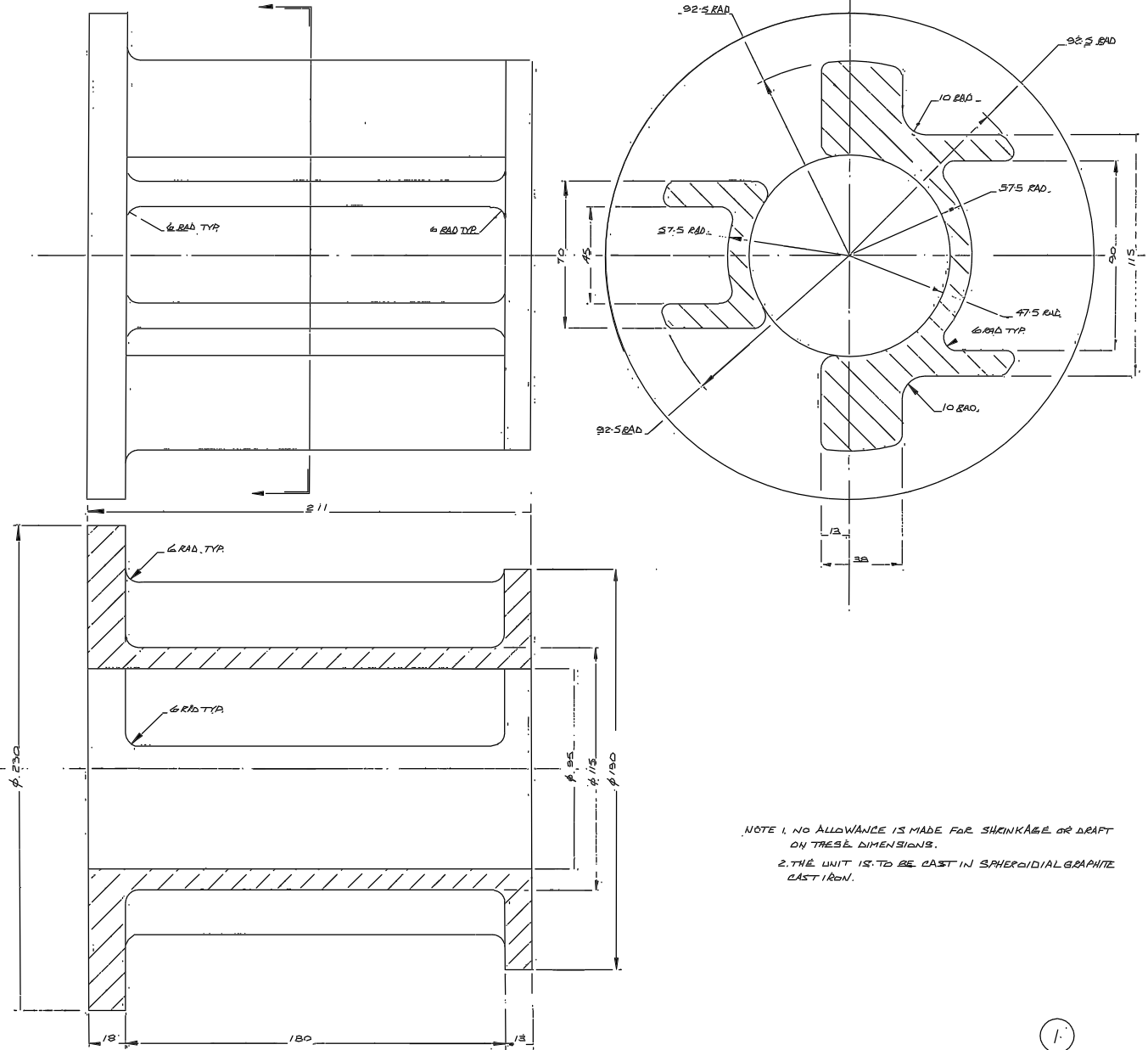
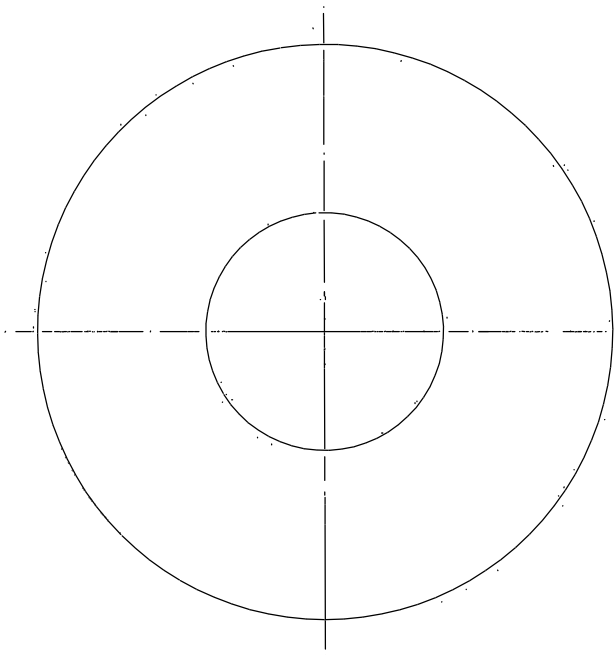
PART VIEW IN DIRECTION OF ARROW



NOTES: 1. AS CAST DIMENSIONS SEE DRAWING W/FV/002
 2. CENTRAL BORE TO BE LEFT AS CAST UNLESS A LIGHT SKIN IS REQUIRED TO REMOVE PROTECTIONS DUE TO CASTING

Tolerances (Unless otherwise stated)				Material		Dimms in m.m.		Scale		THIRD ANGLE PROJECTION		G.A. No.	
X	± 0.25	SHERIDAN LEWIS CAST IRON		2		ROYAL GREENWICH OBSERVATORY, HERSTMONCEUX CASTLE, HAILSHAM		FULL SIZE		CASE I - SMALL PROBE		Drawing No.	
XX	± 0.10	Finish: FINE MATT. BLACK EVERY VISH. SURFACES		Used on		SUSSEY:				BEARING HOUSING MACHINING DRG		W/FV/003	
XXX	± 0.05												
Issue	Mod. No.	Date	Drawn By	Issue	Mod. No.	Date	Drawn By						
			BTW										

Drawing No.
W/FV/002

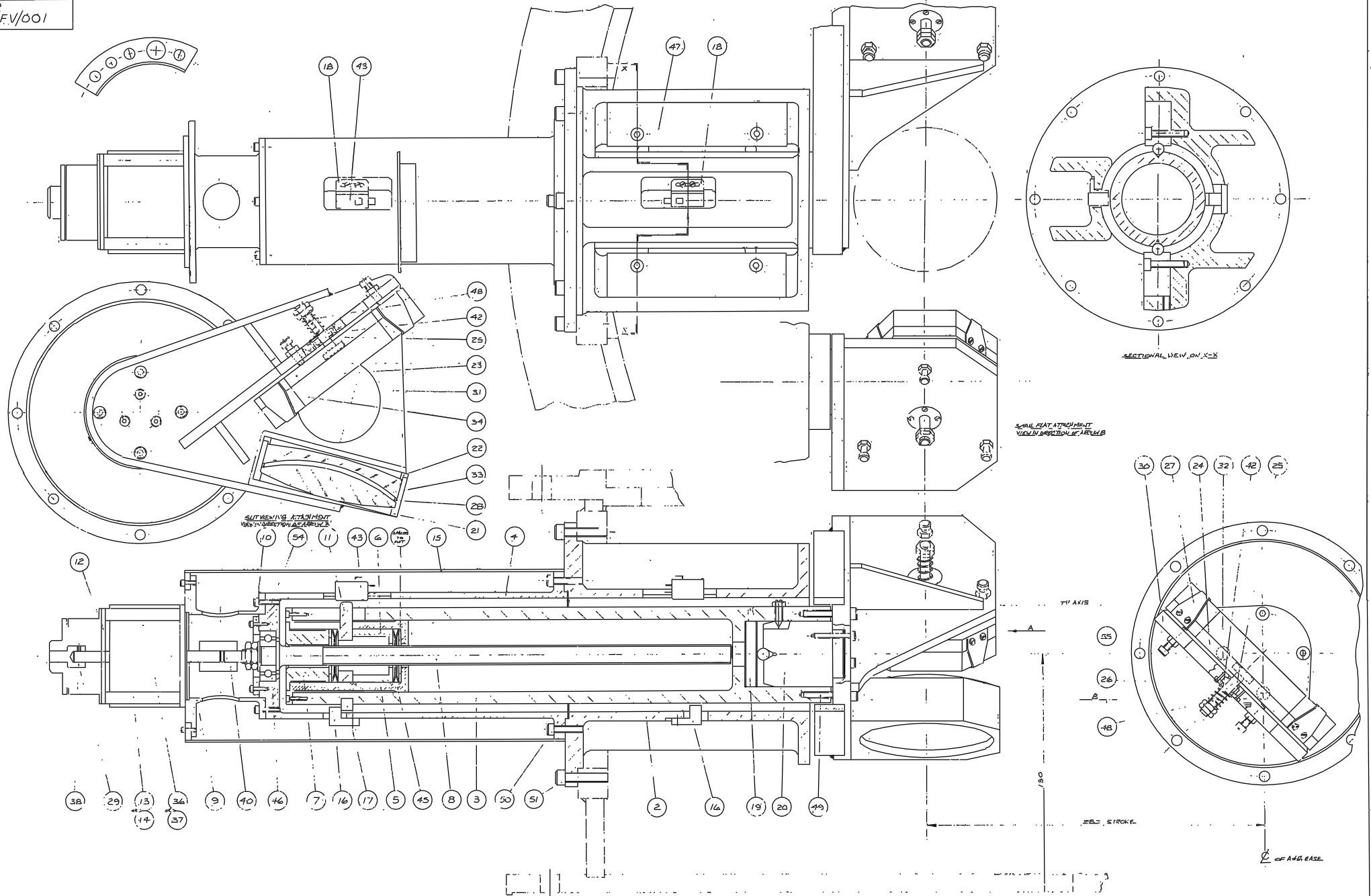


NOTE 1. NO ALLOWANCE IS MADE FOR SHRINKAGE OR DRAFT ON THESE DIMENSIONS.
2. THE UNIT IS TO BE CAST IN SPHEROIDAL GRAPHITE CAST IRON.

1.

								Tolerances (Unless otherwise stated): X ± 1.0 XX ± XXX ±		Material JELATONS WOOD		Dimms in m.m.		Scale FULL SIZE		THIRD ANGLE PROJECTION		G.A. No.	
								Finish PAINT RED		ROYAL GREENWICH OBSERVATORY, HERSTMONCEUX CASTLE, HAILSHAM		No. Resq.		SUSSEX.		42 ALG UNIT CASET SHALLABEE		Drawing No.	
Issue	Mod. No.	Date	Drawn By	Issue	Mod. No.	Date	Drawn By	Used on						BEARING HOUSING CASTING PATTERN		W/FV/002			

Fig No
V/FV/001



				Tolerances (Unless otherwise stated)				Material		Dimms. in m.m.		Scale FULL SIZE		Title		G.A. No.	
				X ±				Finish		ROYAL GREENWICH OBSERVATORY, HERSTMONCEUX CASTLE, HAILSHAM				THIRD ANGLE PROJECTION A-B & A&B UNIT CHAM. PROBE ASSEMBLY		Drawing No.	
				XXX ±						Diag. No.		No. Rev.		PROBE FOR SUT. VIEWING & SMALL FEED FLAT		V/FV/001	
Issue	Mod. No.	Date	Drawn By	Issue	Mod. No.	Date	Drawn By			Used on							

NOV 65 BTH

ROYAL GREENWICH OBSERVATORY,
HERSTMONCEUX CASTLE,
HAILSHAM

PROBE FOR SUT. VIEWING & SMALL FEED FLAT

V/FV/001