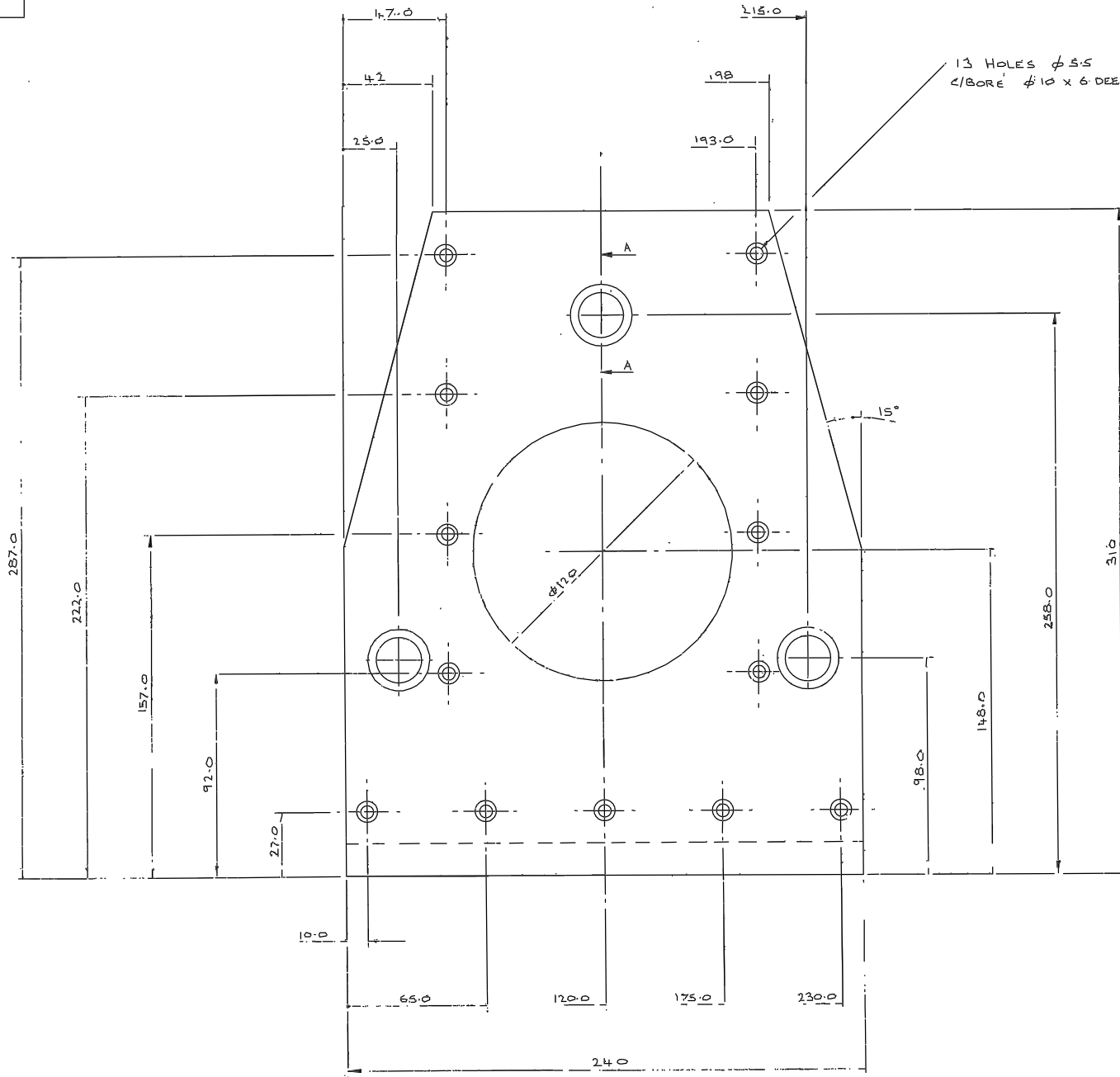
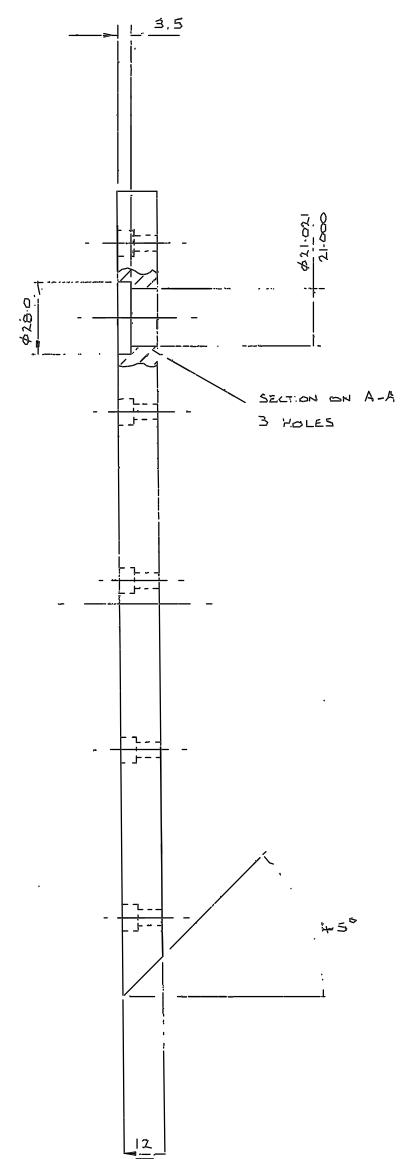


REMOVE ALL SHARP EDGES.



13 HOLES $\phi 3.5$
C/BORE $\phi 10 \times 6$ DEEP



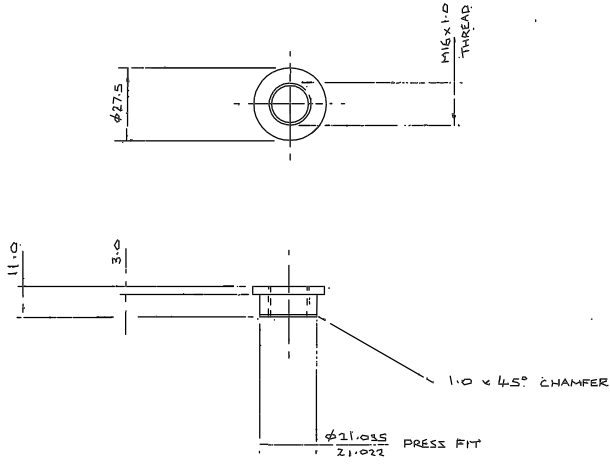
MASS ≈ 1.8 kg

				Tolerances (Unless otherwise stated)		Material 6082 TF		Dimms in mm.		Scale 1:1		THIRD ANGLE PROJECTION		G.A. No. V/FX/000	
				X ± 0.05		AL ALLOY		100%		ROYAL GREENWICH OBSERVATORY,		Title 4.2m A+G UNIT - LARGE FIBRE OPTIC FEED FLAT.		Drawing No.	
				XX ± 0.1		Finish		Dwg. No.		HERSTMANCEUX CASTLE,		6		W/FX/006	
				XXX \pm		Blk. ANODISE		Used on		HAILSHAM SUSSEX.					
Issue	Mod. No.	Date	Drawn By	Issue	Mod. No.	Date	Drawn By					SUPPORT PLATE			

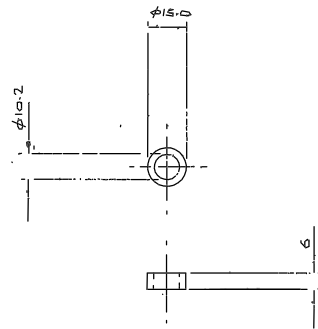
DRAWING NUMBER	No. of Sheets	G.A. Item No.	DRAWING TITLE OR COMPONENT NAME	Ill No.	MATERIAL STOCK OR ORDER No. AND DATE	REMARKS	ISSUE DATE	ISSUED TO	FINISH DATE
W/FX/036	1	36	SPACER	1	ST. STL.				
/ / 037		37	SPACER	2	AL. ALLOY				
/ /		38	MOTOR SHAFT EXTENSION	1	ST. STL. TO DRG. V/FV/006/11				
/ /		39							
/ /		40							
/ /		41							
/ /		42							
/ /		43							
/ /		44							
/ /		45							
/ /		46							
/ /		47							
/ /		48							
/ /		49							
/ /		50	STEPPING MOTOR	1	SLO SYN 1093E				
/ /		51	FLEXIBLE COUPLING	1	HELICAL 4005				
/ /		52	PROXIMITY SWITCH V3 STYLE	2	RS 303-804				
/ /		53	LINEAR BEARING RAIL	1	UNIMATIC XR9-600				
/ /		54	LINEAR BEARING RAIL	1	UNIMATIC XR9-500				
/ /		55	RE-CIRCULATING ROLLER BEARING	3	SCHNEEBURGER SK09-150				
/ /		56	ELECTRO-MAGNETIC BRAKE	1	SIMPLATROLL 14-112-05-1-1-10mm BORE				
/ /		57	DEEP GROOVE BALL BEARING	1	SKF 6300-2RS1				
/ /		58	BEARING FIXING SCREWS	17	TO SUIT R9 BEARING RAIL				
/ /		59	DISC SPRING	4	BELLEVILLE AM3618P9				
/ /		60							
/ /		61							
/ /		62							
/ /		63							
/ /		64							
/ /		65							
/ /		66							
/ /		67							
/ /		68							
/ /		69							
/ /		70	SCREW M6 x 20 CAP HD.	13	ST. STL.				
/ /		71	" M6 x 50 "	3	"				
JOB TITLE 4.2m A+G UNIT LARGE FIBRE OPTIC FEED FLAT						ASSY DRG. No. V/FX/000	SHEET No. 2 of 3	DRAWN BY ASW DATE MAR '86	
ROYAL GREENWICH OBSERVATORY,			HERSTMONCEUX CASTLE,			HAILSHAM,		SUSSEX	

DRAWING NUMBER	No. of Sheets	G.A. Item No.	DRAWING TITLE OR COMPONENT NAME	No. of	MATERIAL STOCK OR ORDER No. AND DATE	REMARKS	ISSUE DATE	ISSUED TO	FINISH DATE
V/FX/000	1		ASSEMBLY	1					
W/FX/001	1		ASSEMBLY MIRROR CELL	1					
V/FX/002	1	2	MIRROR	1	DURAN 50				
W/FX/003	1	3	MIRROR SUPPORT	1	AL. ALLOY				
V/FX/004	1	4	BASEPLATE	1	CAST AL. ALLOY TOOLING PLATE				
W/FX/005	1	5	BEARING SUPPORT PLATE	1	AL. ALLOY				
W/FX/006	1	6	SUPPORT PLATE	1	"				
W/FY/007	1	7	SUPPORT WEB	2	"				
W/FX/008	1	8	SIDE RAIL	1	"				
/ 009	1	9	SIDE RAIL	1	"				
W/FX/010	}	10	CONNECTING PLATE	1	"				
/ 011		11	END PLATE - NUT HOUSING	1	"				
/ 012		12	HOUSING - NUT	1	"				
W/FX/013	}	13	BEARING HOUSING	1	"				
/ 014		14	BEARING RETAINER	1	"				
/ 015		15	SUPPORT PILLAR - BRAKE	4	"				
/ 016	}	16	MOUNTING PLATE - BRAKE	1	"				
W/FX/017		17	MOTOR BRACKET	1	"				
/ 018		18	BUSH	3	ST. STL.				
/ 019	}	19	LOCKNUT	3	"				
/ 020		20	SCREW - MIRROR ADJUSTING	3	"				
W/FX/021		21	LOCKNUT	1	"				
/ 022	}	22	WASHER	1	"				
/ 023		23	ANTI-ROTATION PIN	1	MILD STEEL				
/ 024		24	BALL SCREW + NUT	1	UNIMATIC BRT - SF-16x5				
W/FX/025	}	25	BEARING/STOP BRACKET	1	AL. ALLOY				
/ 026		26	BEARING BUSH	1	OLITE/PTFE				
/ 027		27	PROX. SWITCH SUPPORT BRKT.	1	AL. ALLOY				
/ 028	}	28	PROX. SWITCH SUPPORT BR'KT.	1	"				
W/FX/029		29	SPRING CLAMP	4	BERYL'M COPPER	HEAT TREAT			
/ 030		30	BUSH	6	BRASS				
/ 031	}	31	BUTTON	3	NYLON				
/ 032		32	SIDE PLATE	2	AL. ALLOY				
/ 033		33	SIDE PLATE	2	"				
/ 034	}	34	SPRING CLAMP	2	BERYL'M COPPER	HEAT TREAT			
W/FX/035		35	BUSH	3	ST. STL.				
JOB TITLE 4.2 m A+G UNIT LARGE FIBRE OPTIC FEED FLAT						ASSY DRG. No. V/FX/000	SHEET No. 1 of 3	DRAWN BY AJW DATE MAR. 86	
ROYAL GREENWICH OBSERVATORY,			HERSTMONCEUX CASTLE,			HAILSHAM,		SUSSEX	

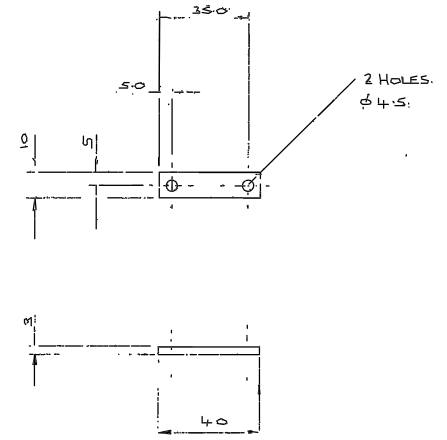
Drawing No.
W/F X/035-7



35			TITLE BUSH		
MATERIAL	SCALE	TOLERANCES ±			
ST. STL.	1:1	X 0.5			
FINISH	No REQ. PER UNIT	XX 0.1			
CLEAN	3 OFF	XXX			
G.A. No.	DRAWING No.				
V/FX/000	R.G.O. W/FX/035				



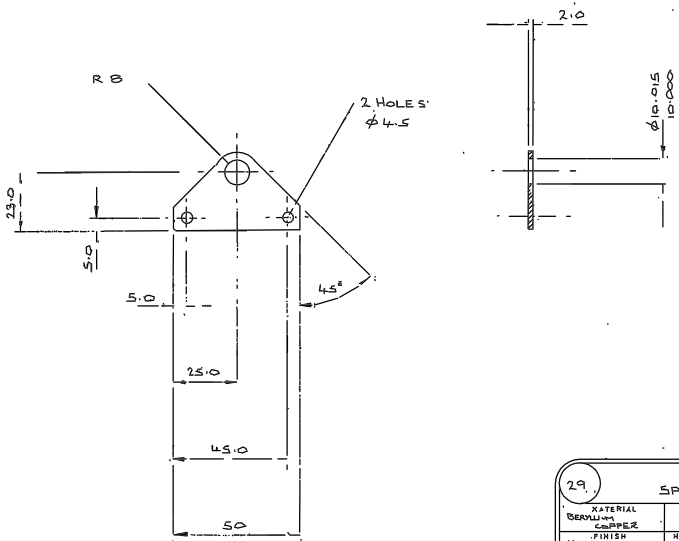
36			TITLE SPACER		
MATERIAL	SCALE	TOLERANCES ±			
ST. STL.	1:1	X 0.5			
FINISH	No REQ. PER UNIT	XX 0.1			
CLEAN	10 OFF	XXX			
G.A. No.	DRAWING No.				
V/FX/000	R.G.O. W/FX/036				



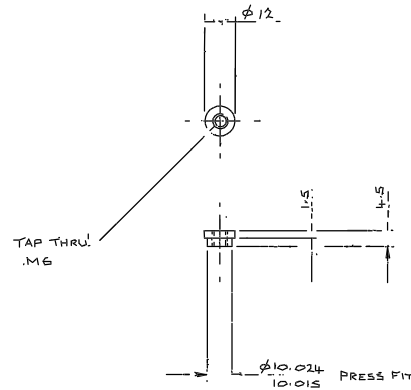
37			TITLE SPACER		
MATERIAL	SCALE	TOLERANCES ±			
HP30 ALLOY	1:1	X 0.5			
FINISH	No REQ. PER UNIT	XX 0.1			
BLK. ANODISE	2 OFF	XXX			
G.A. No.	DRAWING No.				
V/FX/000	R.G.O. W/FX/037				

Tolerances (Unless otherwise stated)								Material		Dimns in m.m.		Scale		THIRD ANGLE PROJECTION		G.A. No.	
Issue	Mod. No.	Date	Drawn By	Issue	Mod. No.	Date	Drawn By	Finish	Used on	Orig. No.	No. Req.			Title		Drawing No.	
															4.2 m A+G UNIT - LARGE FIBRE OPTIC FEED FLAT		
															DETAILS		W/FX/035-7

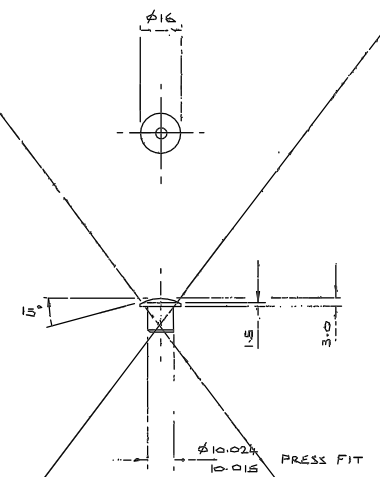
Drawing No.
W/FX/029-34



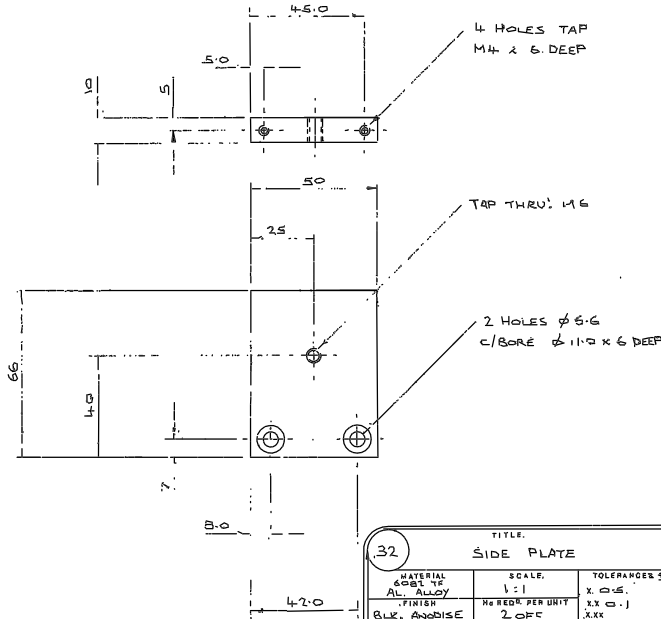
29. TITLE: SPRING CLAMP		
MATERIAL: SERVAUM COPPER	SCALE: 1:1	TOLERANCES ±: X 0.5, XX 0.1, XXX
FINISH: CLEAN	HEAT TREAT: 4 OFF	
G.A. No. W/FX/001	DRAWING No. R.G.O. W/FX/029	



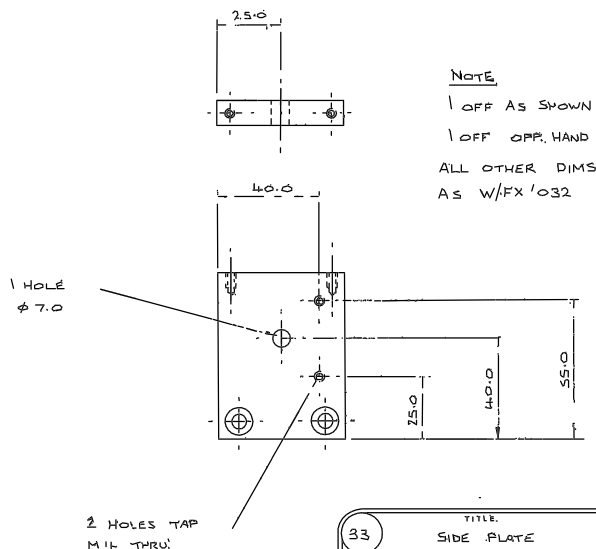
30. TITLE: BUSH		
MATERIAL: BRASS	SCALE: 1:1	TOLERANCES ±: X 0.5, XX 0.1, XXX
FINISH: CLEAN	HEAT TREAT: 6 OFF	
G.A. No. W/FX/001	DRAWING No. R.G.O. W/FX/030	



31. TITLE: BUTTON		
MATERIAL: NYLON	SCALE: 1:1	TOLERANCES ±: X 0.5, XX 0.1, XXX
FINISH: CLEAN	HEAT TREAT: 3 OFF	
G.A. No. W/FX/001	DRAWING No. R.G.O. W/FX/031	

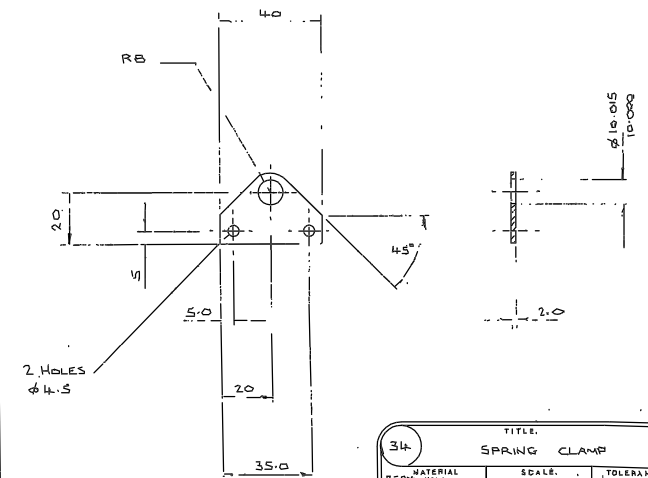


32. TITLE: SIDE PLATE		
MATERIAL: 6061 T6 AL ALLOY	SCALE: 1:1	TOLERANCES ±: X 0.5, XX 0.1, XXX
FINISH: BLK. ANODISE	HEAT TREAT: 2 OFF	
G.A. No. W/FX/001	DRAWING No. R.G.O. W/FX/032	



33. TITLE: SIDE PLATE		
MATERIAL: 6061 T6 AL ALLOY	SCALE: 1:1	TOLERANCES ±: X 0.5, XX 0.1, XXX
FINISH: BLK. ANODISE	HEAT TREAT: SEE NOTE	
G.A. No. W/FX/001	DRAWING No. R.G.O. W/FX/033	

NOTE
1 OFF AS SHOWN
1 OFF OPP. HAND
ALL OTHER DIMS.
AS W/FX/032

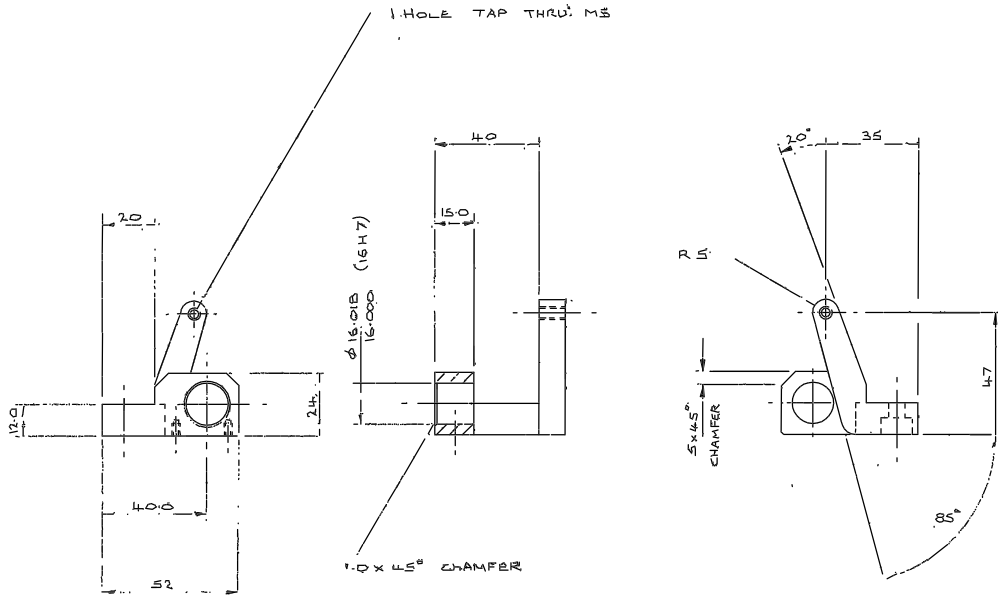


34. TITLE: SPRING CLAMP		
MATERIAL: SERVAUM COPPER	SCALE: 1:1	TOLERANCES ±: X 0.5, XX 0.1, XXX
FINISH: CLEAN	HEAT TREAT: 2 OFF	
G.A. No. W/FX/001	DRAWING No. R.G.O. W/FX/034	

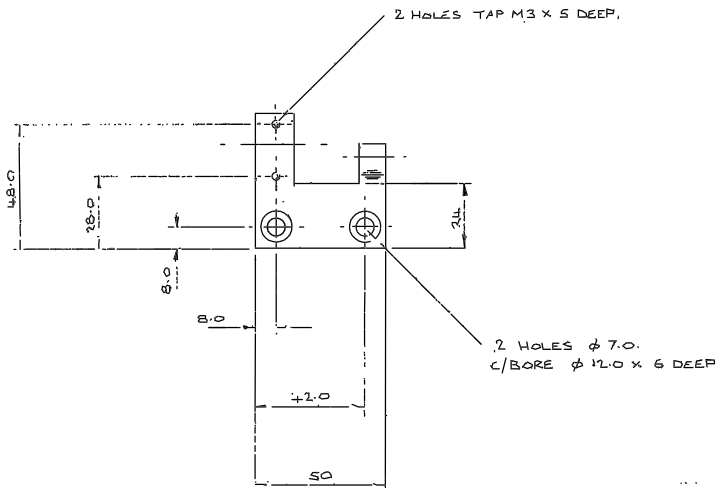
Tolerances (Unless otherwise stated): X ± XX ± XXX ±		Material	Scale	THIRD ANGLE PROJECTION	G.A. No.
Issue	Mod. No.	Finish	Drawn By	This	Drawing No.
18-3-86	RXC			W-2m A+G UNIT - LARGE FIBRE OPTIC FEED FLAT	W/FX/029-34
				DETAILS	

Drawing No:
W/FX/025-B

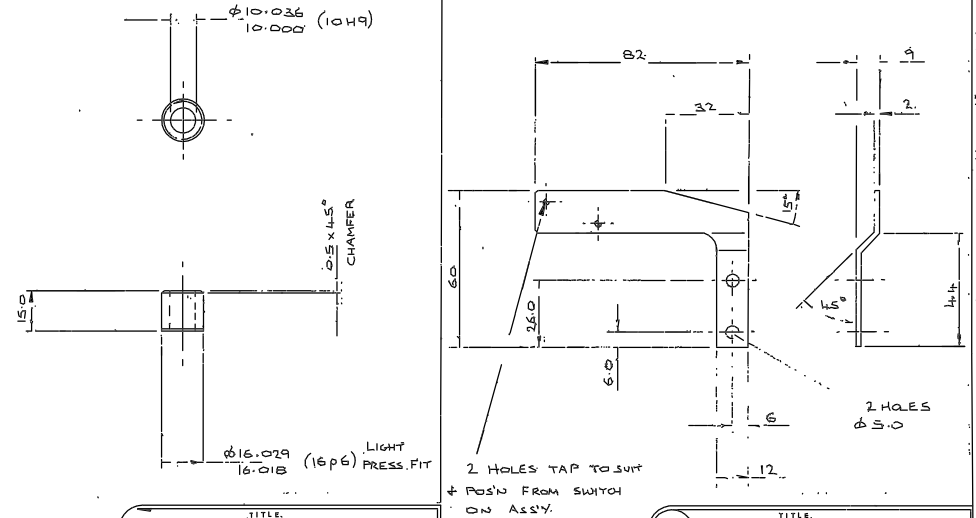
REMOVE ALL SHARP EDGES



TITLE		
25 BEARING/STOP BRACKET		
MATERIAL 6082 AL ALLOY	SCALE 1:1	TOLERANCES ± X 0.5 XX 0.1 XXX
FINISH BLK. ANODISE	NO REQS PER UNIT 1 OFF	
G.A. No. V/FX/000	DRAWING No. R.G.O. W/FX/025	



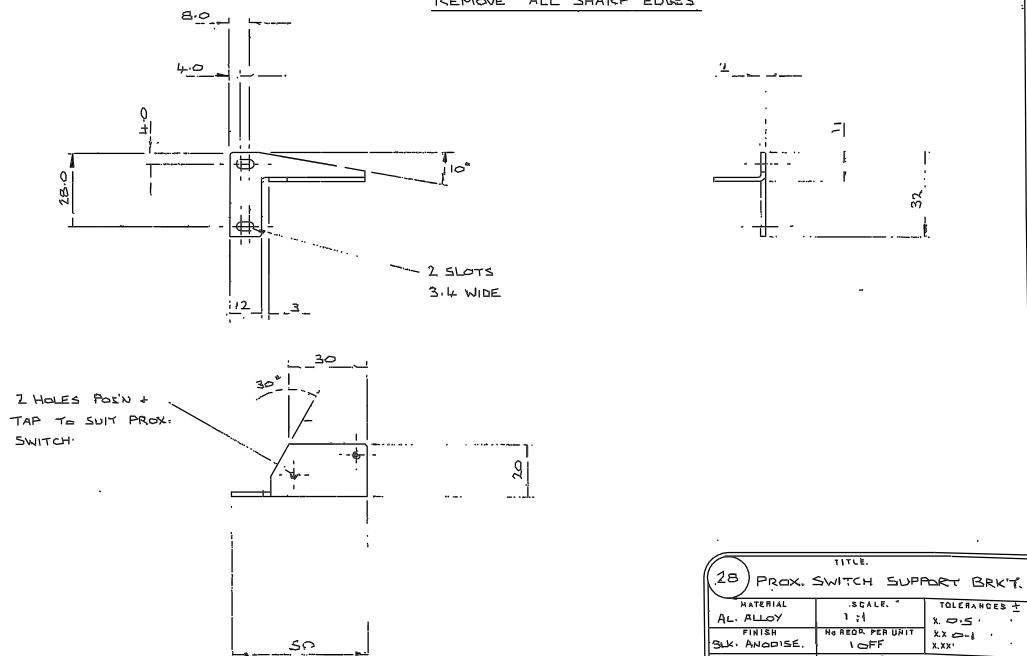
REMOVE ALL SHARP EDGES



TITLE		
26 BEARING RUSH		
MATERIAL OILITE/PYRE	SCALE 1:1	TOLERANCES ± X 0.5 XX 0.1 XXX
FINISH CLEAN	NO REQS PER UNIT 1 OFF	
G.A. No. V/FX/000	DRAWING No. R.G.O. W/FX/026	

TITLE		
27 PROX. SWITCH SUPPORT BRKT.		
MATERIAL AL. ALLOY	SCALE 1:1	TOLERANCES ± X 0.5 XX 0.1 XXX
FINISH BLK. ANODISE	NO REQS PER UNIT 1 OFF	
G.A. No. V/FX/000	DRAWING No. R.G.O. W/FX/027	

REMOVE ALL SHARP EDGES



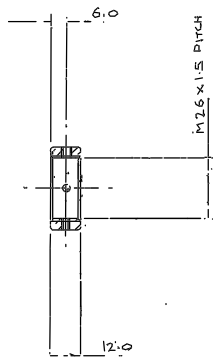
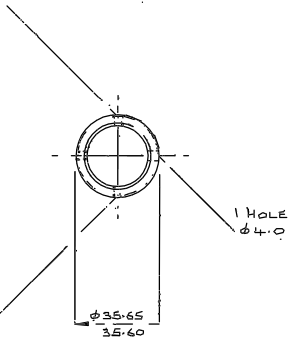
TITLE		
28 PROX. SWITCH SUPPORT BRKT.		
MATERIAL AL. ALLOY	SCALE 1:1	TOLERANCES ± X 0.5 XX 0.1 XXX
FINISH BLK. ANODISE	NO REQS PER UNIT 1 OFF	
G.A. No. V/FX/000	DRAWING No. R.G.O. W/FX/028	

Issue	Mod. No.	Date	Drawn By	Issue	Mod. No.	Date	Drawn By	Material	Dimts in m.m.	Scale	THIRD ANGLE PROJECTION	Title	Drawing No.
												4-2 m A+G UNIT - LARGE FIBRE OPTIC FEED FLAT	W/FX/025-B
												DETAILS	

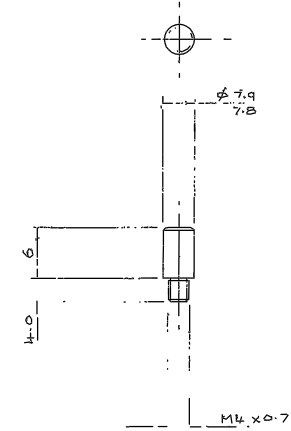
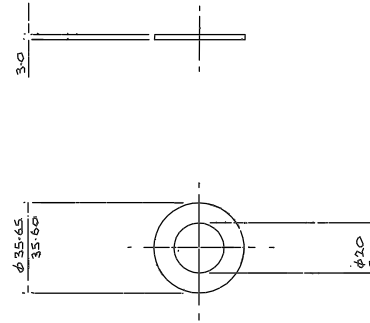
Drawing No.

W/FX/021-4

1 HOLE TAP M4
SPOT FACE $\phi 9$



2 HOLES TAP
M3



TITLE			
21. LOCKNUT.			
MATERIAL	SCALE	TOLERANCES \pm	
ST. STL.	1:1	X 0.5	
FINISH	NO REQ. PER UNIT	X.X 0.1	
CLEAN	1 OFF	XXX	
D.A. No.	DRAWING No.		
V/FX/1000	R.G.O. W/FX/021		

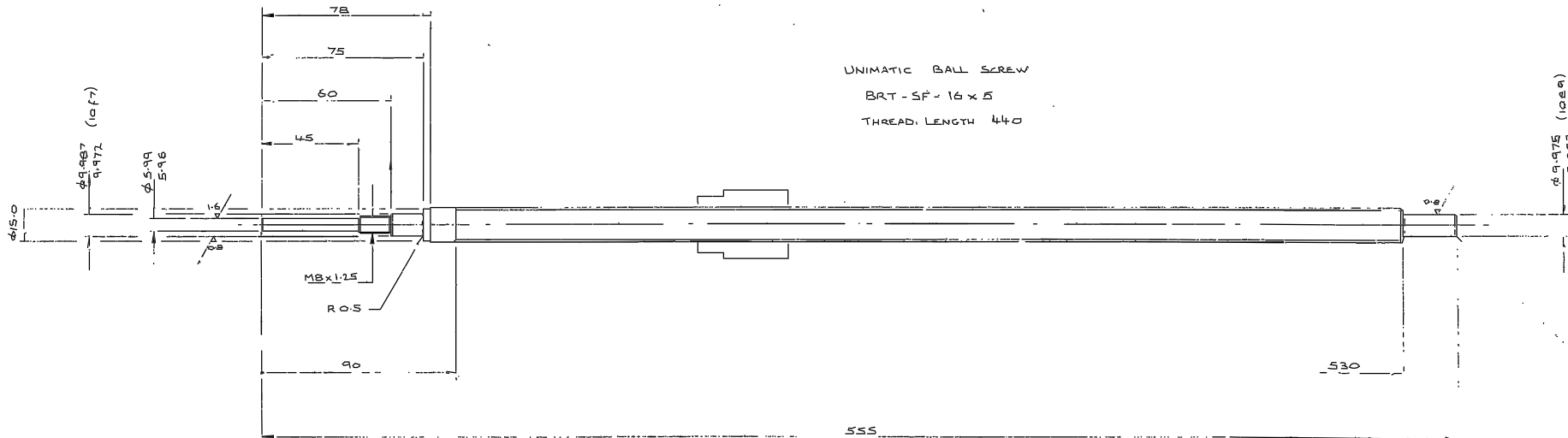
TITLE			
22. WASHER			
MATERIAL	SCALE	TOLERANCES \pm	
ST. STL.	1:1	X 0.5	
FINISH	NO REQ. PER UNIT	X.X 0.1	
CLEAN	1 OFF	XXX	
D.A. No.	DRAWING No.		
V/FX/1000	R.G.O. W/FX/022		

TITLE			
23. ANTI-ROTATION PIN			
MATERIAL	SCALE	TOLERANCES \pm	
MILD STEEL	1:1	X 0.5	
FINISH	NO REQ. PER UNIT	X.X 0.1	
CLEAN	1 OFF	XXX	
D.A. No.	DRAWING No.		
V/FX/1000	R.G.O. W/FX/023		

UNIMATIC BALL SCREW

BRT-SF-16 x 5

THREAD LENGTH 440

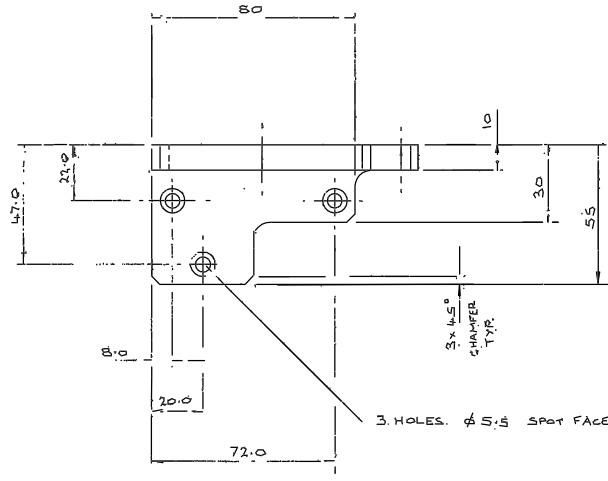


TITLE			
24. BALL SCREW			
MATERIAL	SCALE	TOLERANCES \pm	
	1:1	X 0.5	
FINISH	NO REQ. PER UNIT	X.X 0.1	
CLEAN	1 OFF	XXX	
D.A. No.	DRAWING No.		
V/FX/1000	R.G.O. W/FX/014		

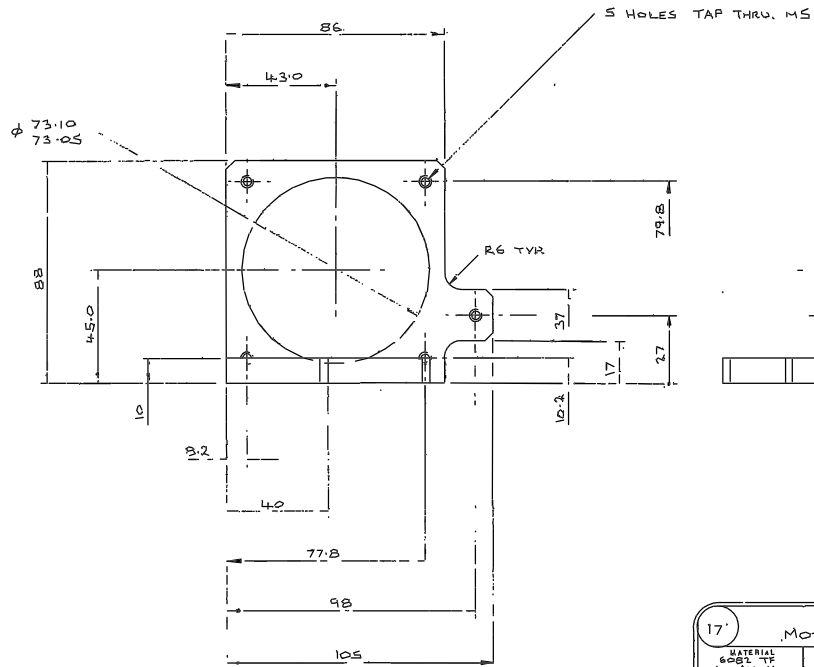
Tolerances (Unless otherwise stated)								Material		Dimns in m.m.		Scale		THIRD ANGLE PROJECTION		Drawing No.		
Issue	Mod. No.	Date	Drawn By	Issue	Mod. No.	Date	Drawn By											
				1		10-3-86	R3W											
								ROYAL GREENWICH OBSERVATORY, HERSTMONCEUX CASTLE, HAILSHAM		SUSSEX,		Title		4.2 m A.G. UNIT - LARGE FIBRE OPTIC FEED FLAT DETAILS				
										Used on				W/FX/021-4				

Drawing No.
W/FX/017-20

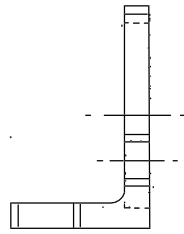
REMOVE ALL SHARP EDGES



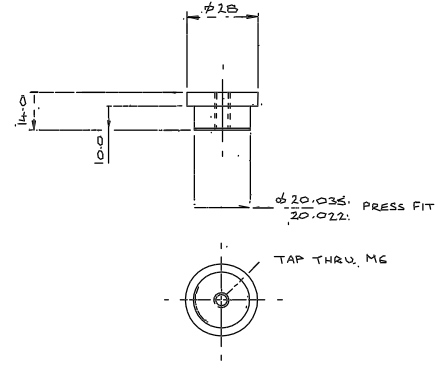
3 HOLES. ϕ 5.5 SPOT FACE ϕ 10



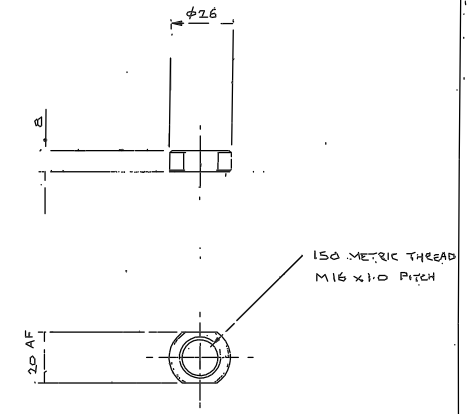
5 HOLES TAP THRU. M5



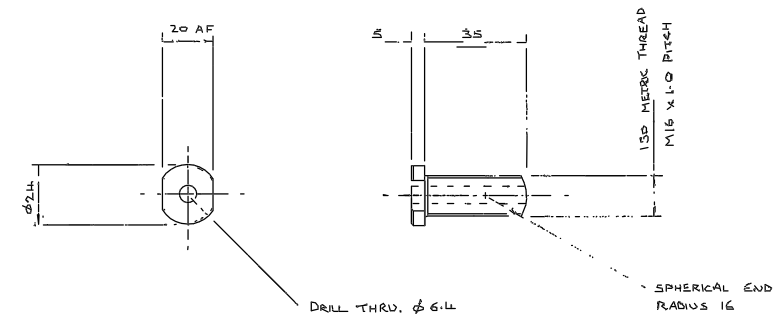
17				TITLE			
MOTOR BRACKET.							
MATERIAL	SCALE	TOLERANCES \pm					
6061 TF	1:1	X 0.5					
ALL ALLOY		XX 0.1					
FINISH	NO REQS. PER UNIT	XXX					
BLK. ANODISE	1 OFF						
G.A. No.		DRAWING No.					
V/FX/000		W/FX/017					
R.G.O.							



18				TITLE			
BUSH							
MATERIAL	SCALE	TOLERANCES \pm					
ST. STL	1:1	X 0.5					
FINISH	NO REQS. PER UNIT	XX 0.1					
CLEAN	3 OFF	XXX					
G.A. No.		DRAWING No.					
V/FX/000		W/FX/018					
R.G.O.							



19				TITLE			
LOCKNUT							
MATERIAL	SCALE	TOLERANCES \pm					
ST. STL	1:1	X 0.5					
FINISH	NO REQS. PER UNIT	XX 0.1					
CLEAN	3 OFF	XXX					
G.A. No.		DRAWING No.					
V/FX/000		W/FX/019					
R.G.O.							



20				TITLE			
SCREW - MIRROR ADJUSTING							
MATERIAL	SCALE	TOLERANCES \pm					
ST. STL	1:1	X 0.5					
FINISH	NO REQS. PER UNIT	XX 0.1					
CLEAN	3 OFF	XXX					
G.A. No.		DRAWING No.					
V/FX/000		W/FX/020					
R.G.O.							

Issue	Mod. No.	Date	Drawn By	Issued	Mod. No.	Date	Drawn By

Tolerances (Unless otherwise stated)

X \pm

XX \pm

XXX \pm

Material

Finish

Dim's in m.m.

Scale

ROYAL GREENWICH OBSERVATORY,
HERSTMONCEUX CASTLE,
HAILSHAM SUSSEX.

THIRD ANGLE PROJECTION

Title L-2 m ATG UNIT - LARGE FIBRE OPTIC FEED FLAT

DETAILS

G.A. No.

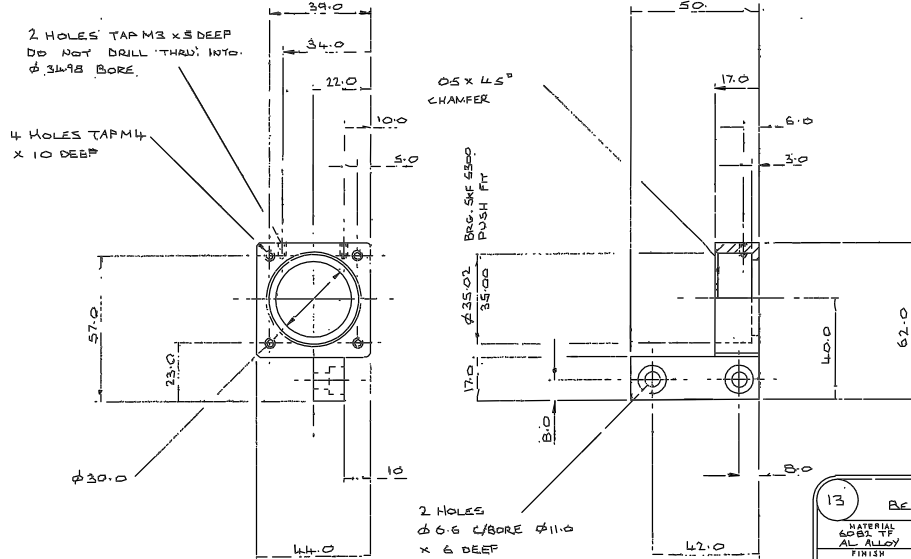
Drawing No.

W/FX/017-20

Drawing No.

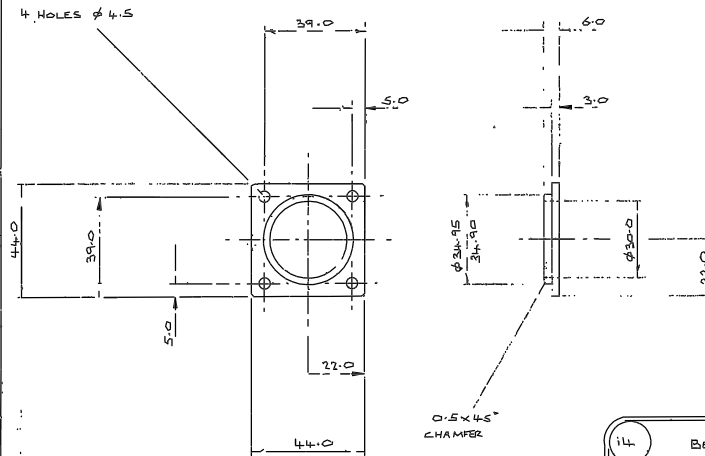
W/FX/013-6.

REMOVE ALL SHARP EDGES

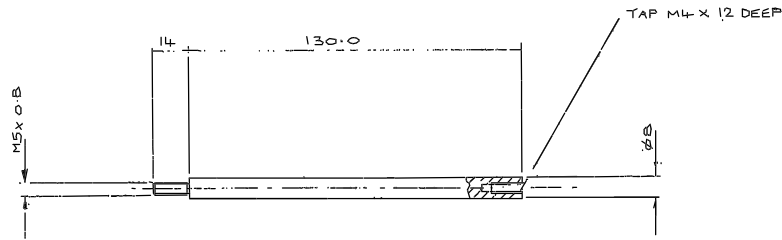


13 BEARING HOUSING		
MATERIAL 6082 TP AL ALLOY	SCALE 1:1	TOLERANCES ± X 0.5 XX 0.1 XXX
FINISH BLK. ANODISE	NO REQ. PER UNIT 1 OFF	
GA. No. V/FX/000	DRAWING No. R.G.O. W/FX/013	

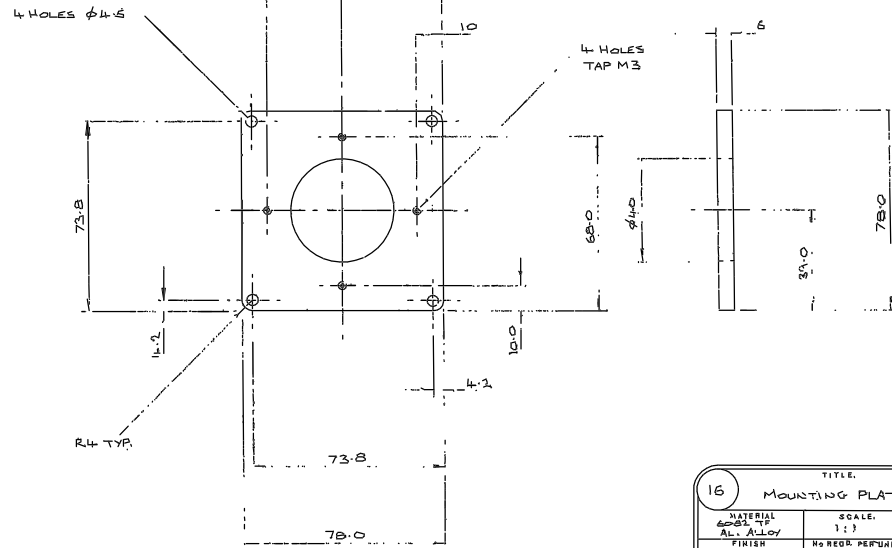
REMOVE ALL SHARP EDGES



14 BEARING RETAINER		
MATERIAL 6082 TP AL ALLOY	SCALE 1:1	TOLERANCES ± X 0.5 XX 0.1 XXX
FINISH BLK. ANODISE	NO REQ. PER UNIT 1 OFF	
GA. No. V/FX/000	DRAWING No. R.G.O. W/FX/014	



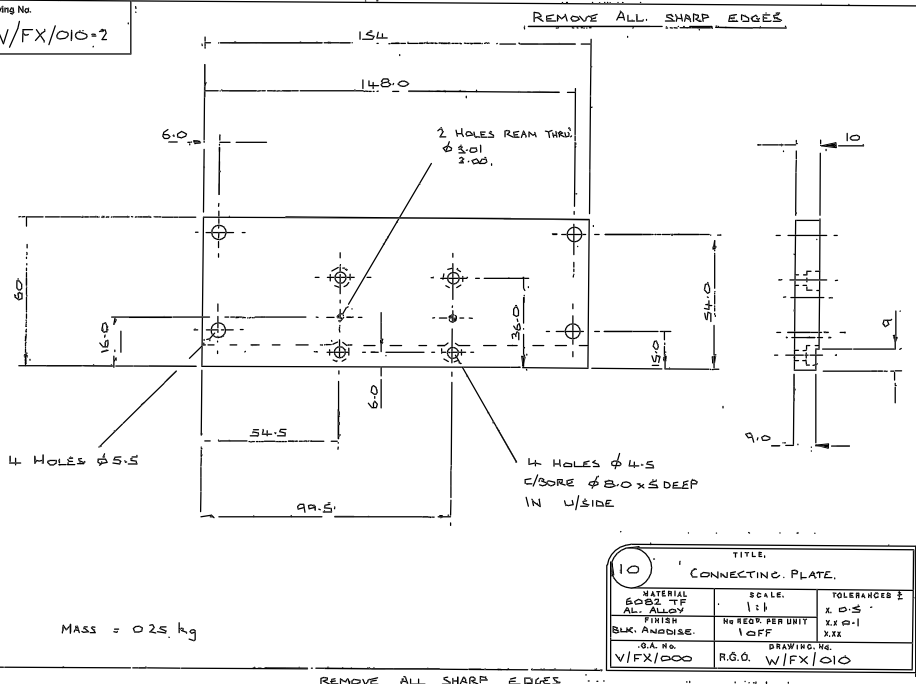
15 SUPPORT PILLAR - BRAKE		
MATERIAL 6082 TP AL ALLOY	SCALE 1:1	TOLERANCES ± X 0.5 XX 0.1 XXX
FINISH BLK. ANODISE	NO REQ. PER UNIT 1 OFF	
GA. No. V/FX/000	DRAWING No. R.G.O. W/FX/015	



16 MOUNTING PLATE - BRAKE		
MATERIAL 6082 TP AL ALLOY	SCALE 1:1	TOLERANCES ± X 0.5 XX 0.1 XXX
FINISH BLK. ANODISE	NO REQ. PER UNIT 1 OFF	
GA. No. V/FX/000	DRAWING No. R.G.O. W/FX/016	

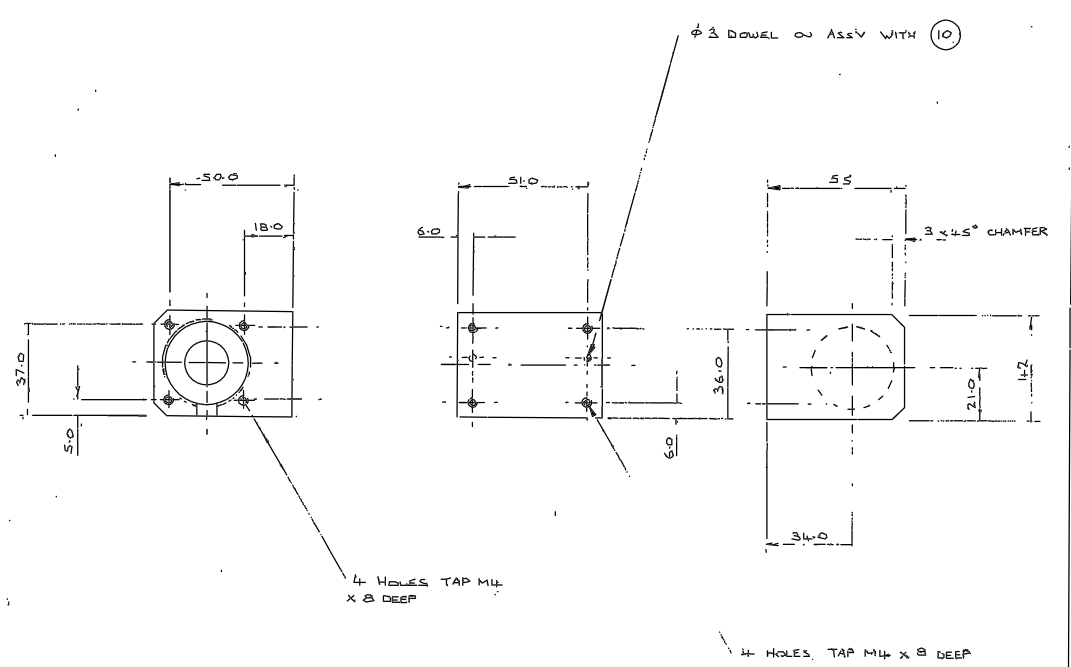
Tolerances (Unless otherwise stated)										Material:		Dimns in mm.		Scale		THIRD ANGLE PROJECTION		GA. No.	
X ±										Finish		ROYAL GREENWICH OBSERVATORY, HERSTMONCEUX CASTLE, HAILSHAM		R.G.O.		Title 4.2M A+G UNIT - LARGE FIBRE OPTIC FEED FLAT		Drawing No.	
Y X ±										Drg. No.		Used on		SUSSEX.		W/FX/013-6		W/FX/013-6	
Z .XX ±																			

Drawing No. W/FX/010-2

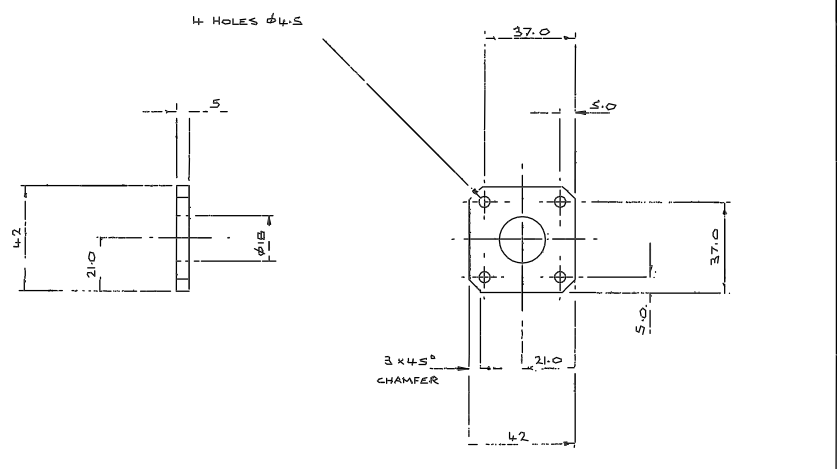


10		
TITLE CONNECTING PLATE		
MATERIAL 6082 TP AL ALLOY	SCALE 1:1	TOLERANCES ± X 0.5 XX 0.1 XXX
FINISH	NO REQ PER UNIT 1 OFF	
BLK ANODISE		
S.A. No. W/FX/000	DRAWING No. R.G.O. W/FX/010	

REMOVE ALL SHARP EDGES



REMOVE ALL SHARP EDGES



11		
TITLE END PLATE - NUT HSG.		
MATERIAL 6082 TP AL ALLOY	SCALE 1:1	TOLERANCES ± X 0.5 XX 0.1 XXX
FINISH	NO REQ PER UNIT 1 OFF	
BLK ANODISE		
S.A. No. W/FX/000	DRAWING No. R.G.O. W/FX/011	

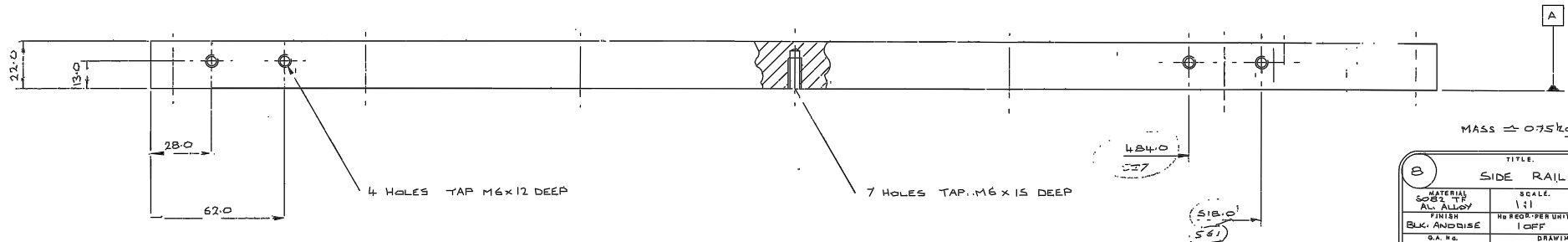
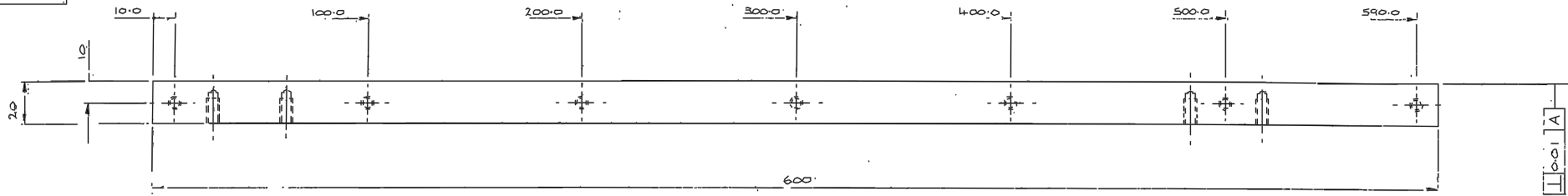
12		
TITLE HOUSING - NUT		
MATERIAL 6082 TP AL ALLOY	SCALE 1:1	TOLERANCES ± X 0.5 XX 0.1 XXX
FINISH	NO REQ PER UNIT 1 OFF	
BLK ANODISE		
S.A. No. W/FX/000	DRAWING No. R.G.O. W/FX/012	

				Tolerances (Unless otherwise stated)				Material		Dimns in mm		Scale		THIRD ANGLE PROJECTION		S.A. No.	
Issue	Mod. No.	Date	Drawn By	1	21-06	RJD	X ±	XX ±	XXX ±	Finish	Dr. No.	No. Req.	ROYAL GREENWICH OBSERVATORY, HERSTMONCEY CASTLE HAILSHAM	SUSSEX.	Title	L.2 m A+G UNIT - LARGE FIBRE OPTIC FEED FLAT	Drawing No.
										Used on				DETAILS		W/FX/010-2	

Drawing No:

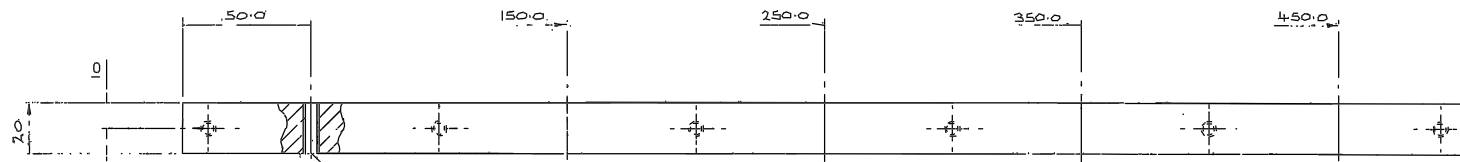
W/FX/008-9

REMOVE ALL SHARP EDGES



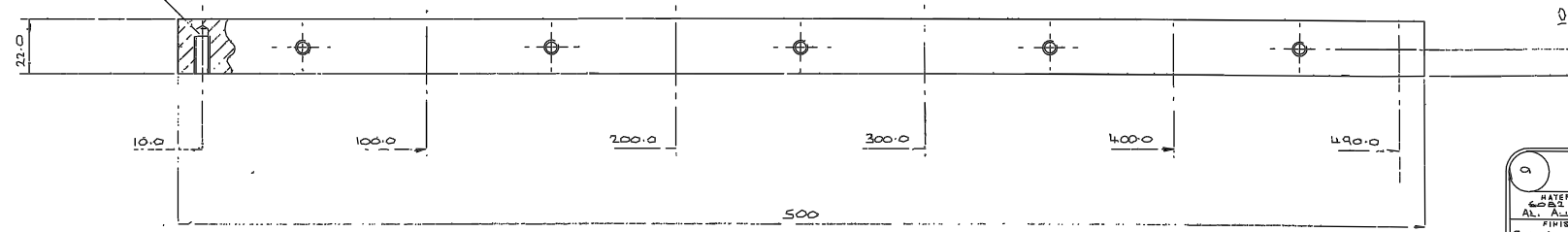
TITLE		
8 SIDE RAIL		
MATERIAL	SCALE	TOLERANCES ±
6061 T6 AL ALLOY	1:1	X 0.5
FINISH	NO REQ. PER UNIT	X.X 0.1
BLK. ANODISE	1 OFF	XXX
G.A. No.	DRAWING No.	
V/FX/000	R.G.O. W/FX/008	

REMOVE ALL SHARP EDGES



6 HOLES TAP M6 X 15 DEEP

5 HOLES TAP THRU M6



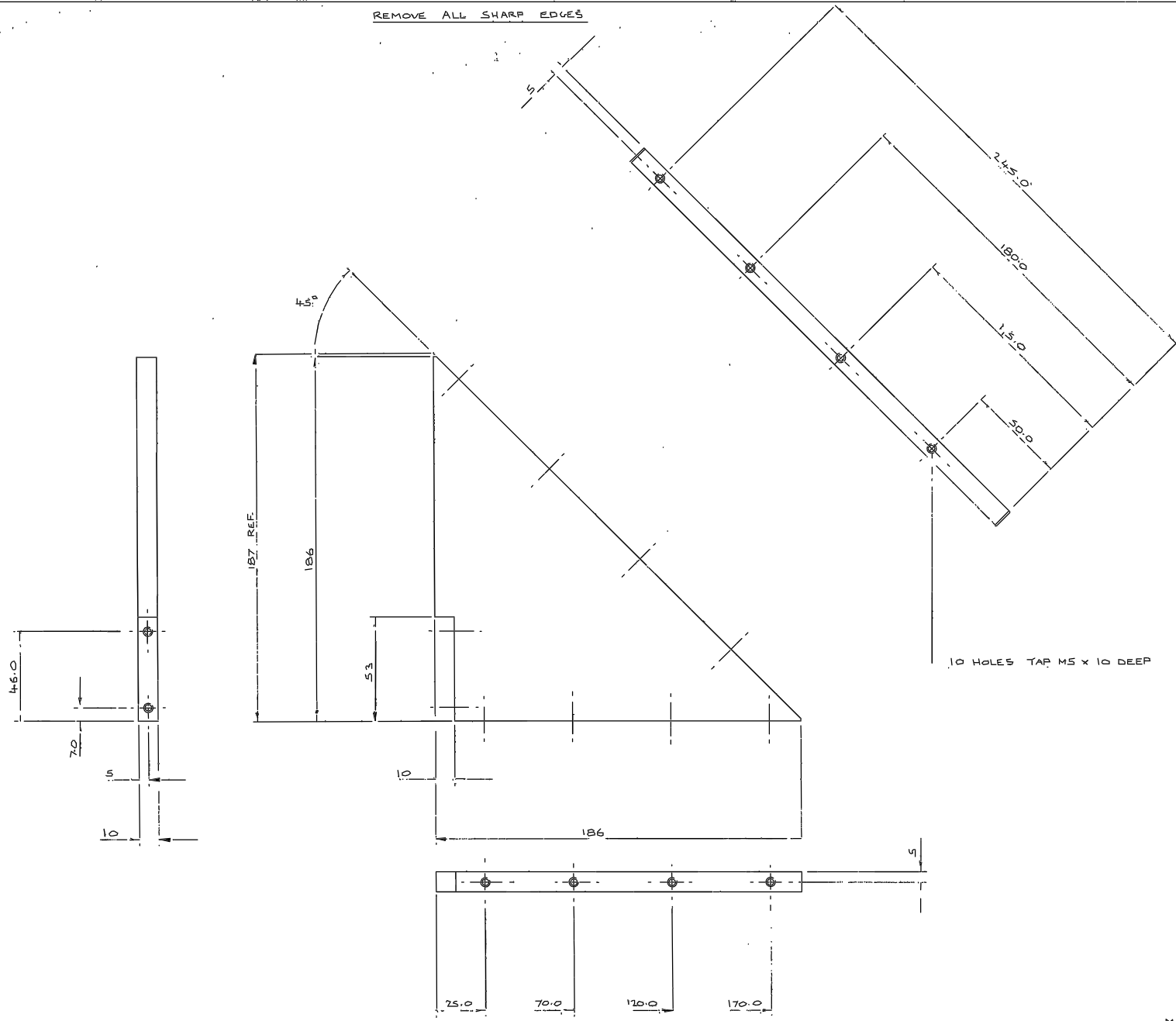
TITLE		
9 SIDE RAIL		
MATERIAL	SCALE	TOLERANCES ±
6061 T6 AL ALLOY	1:1	X 0.5
FINISH	NO REQ. PER UNIT	X.X 0.1
BLK. ANODISE	1 OFF	XXX
G.A. No.	DRAWING No.	
V/FX/000	R.G.O. W/FX/009	

Tolerances (Unless otherwise stated)				Material		Dimns in mm		Scale		THIRD ANGLE PROJECTION		G.A. No.	
X	±												
XX	±												
XXX	±												
Issue	Mod. No.	Date	Drawn By	Issue	Mod. No.	Date	Drawn By	Finish	Drq. No.	No. Rdg.	Used on	ROYAL GREENWICH OBSERVATORY, HERSTMENCEUX CASTLE, HAILSHAM SUSSEX.	Title
													4.2 m A+G UNIT - LARGE FIBRE OPTIC FEED FLAT DETAILS
													W/FX/008-9

Drawing No.

W/FX/007

REMOVE ALL SHARP EDGES



Issue	Mod. No.	Date	Drawn By	Issue	Mod. No.	Date	Drawn By
		16-2-86	RJD				

Tolerances (Unless otherwise stated)
 X. ± 0.5
 XX ± 0.1
 XXX ±

Material 6082 TF AL. ALLOY
 Finish BK. ANODISE

2 OFF
 Dwg. No. No. Rev.
 Used on

Dimms in mm. Scale 1:1
 ROYAL GREENWICH OBSERVATORY,
 HERSTMUNCEUX CASTLE,
 HAILSHAM SUSSEX.

THIRD ANGLE PROJECTION
 Title 4.2m A+G UNIT:- LARGE FIBRE OPTIC FEED FLAT SUPPORT WEB
 7

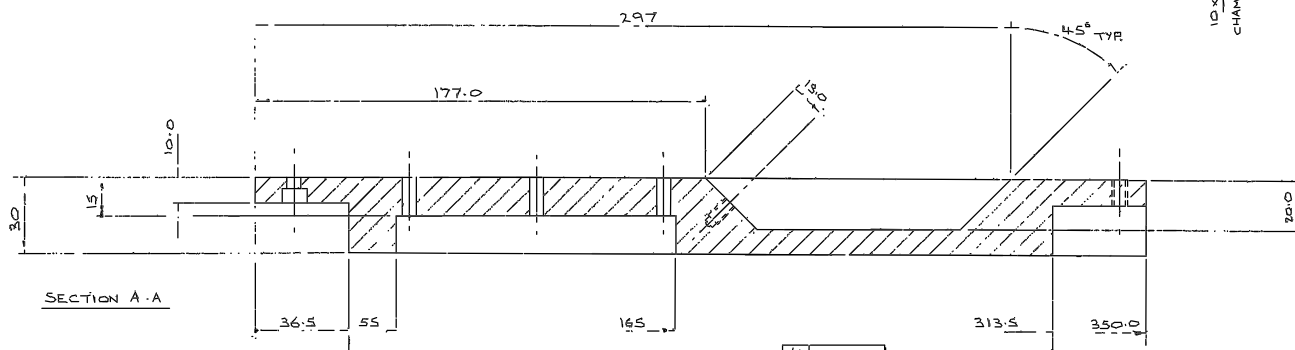
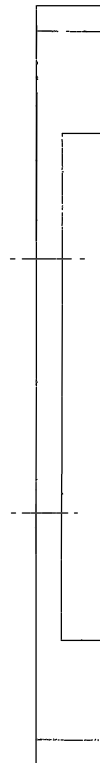
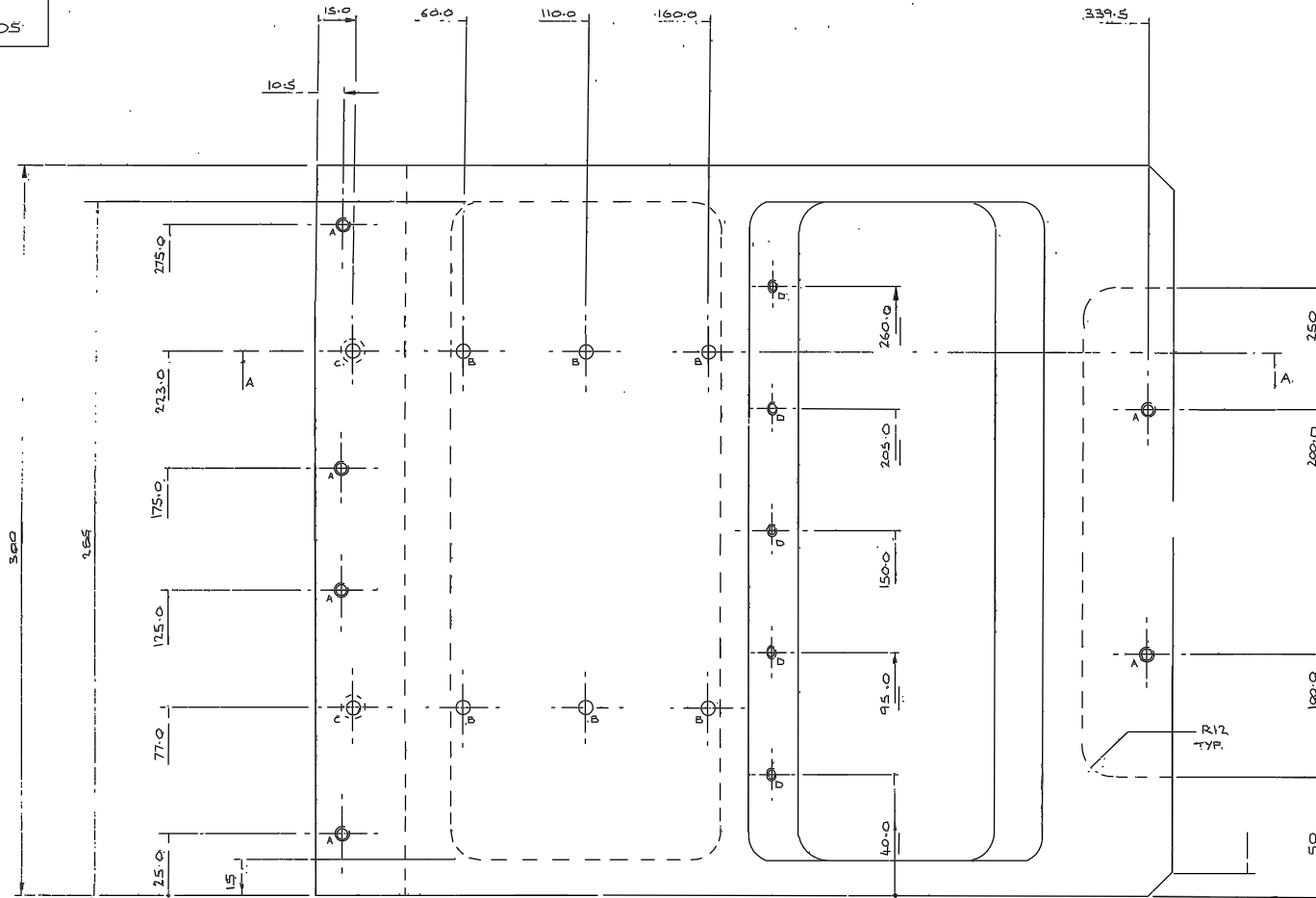
GA No. V/FX/000
 Drawing No. W/FX/007

DRAWING NUMBER	No. of Sheets	G.A. Item No.	DRAWING TITLE OR COMPONENT NAME	No. of No.	MATERIAL STOCK OR ORDER No. AND DATE	REMARKS	ISSUE DATE	ISSUED TO	FINISH DATE
/ /		72	SCREW M6 x 16 CAP HD.	28	ST. STL.				
/ /		73	" M5 x 25 " "	2	"				
/ /		74	" M5 x 20 " "	6	"				
/ /		75	" M5 x 16 " "	7	"				
/ /		76	" M5 x 12 " "	10	"				
/ /		77	" M4 x 12 " "	4	"				
/ /		78	" M4 x 10 " "	16	"				
/ /		79	" M4 x 6 " "	8	"				
/ /		80	" M3 x 6 " "	8	"				
/ /		81	" M6 x 17 GRUB	5	"				
/ /		82	" M6 x 30 "	2	NYLON				
/ /		83	" M6 x 25 "	1	"				
/ /		84	" M6 x 20 "	6	"				
/ /		85	" M3 x 1/2 "	2	"				
/ /		86	" M3 x 4 "	2	ST. STL.				
/ /		87							
/ /		88							
/ /		89							
/ /		90	HEXAGON NUT M6	9	NYLON				
/ /		91	" " M5	2	ST. STL.				
/ /		92	HEXAGON LOCKNUT M6	2	"				
/ /		93							
/ /		94							
/ /		95	DOWEL ϕ 3 x 10 LONG	2	ST. STL.				
/ /		96	" ϕ 5 x 12 LONG	2	"				
/ /									
/ /									
/ /									
/ /									
/ /									
/ /									
/ /									
/ /									
/ /									
/ /									
/ /									
/ /									
JOB TITLE 4.2 m A + G UNIT LARGE FIBRE OPTIC FEED FLAT						ASSY DRG. No. V/FX/000	SHEET No. 3 OF 3	DRAWN BY RSW DATE MAR. 86	
ROYAL GREENWICH OBSERVATORY, HERSTMONCEUX CASTLE,						HAILSHAM,	SUSSEX		

Drawing No.

W/FX/005

REMOVE ALL SHARP EDGES



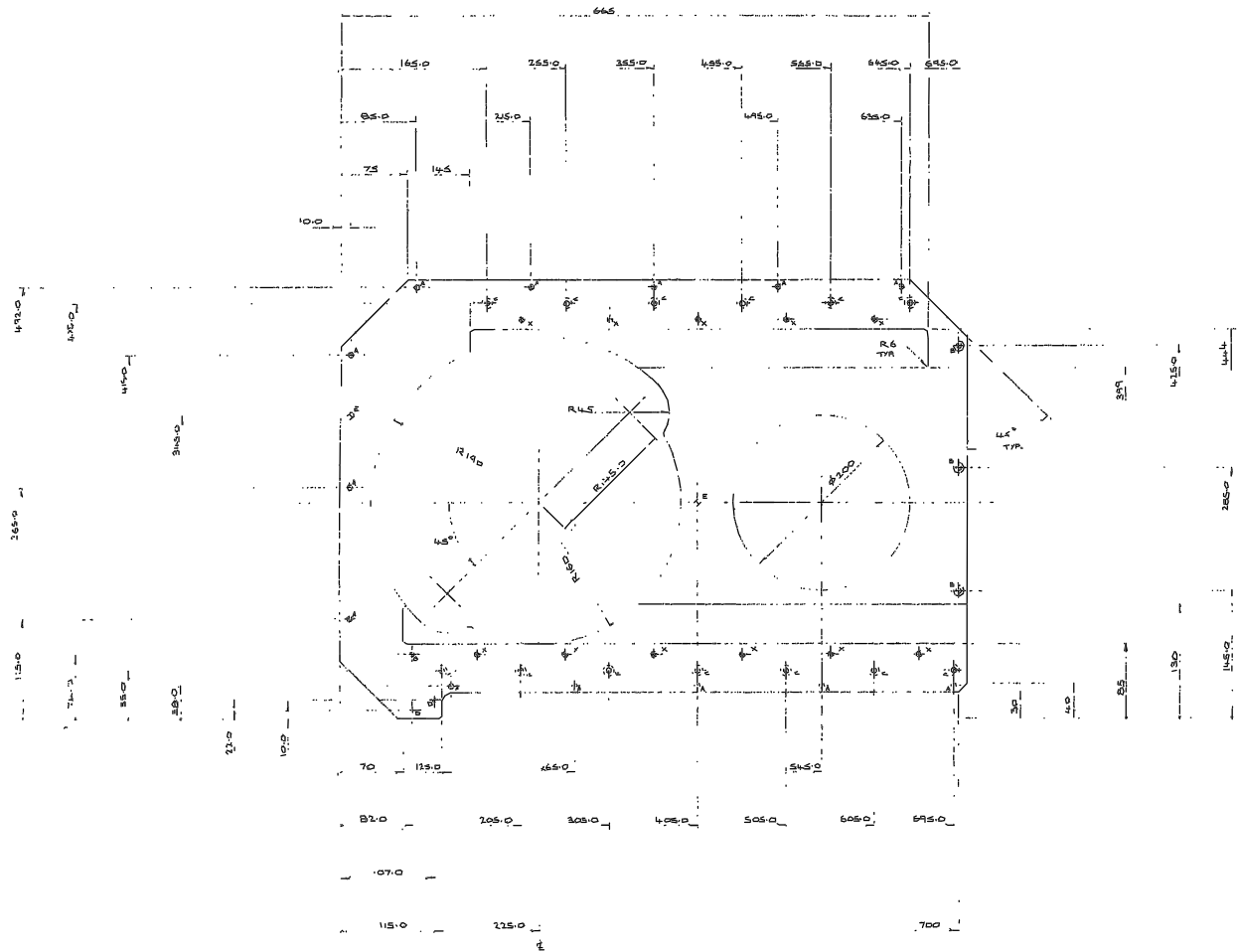
HOLE SIZES

HOLE	NO. OFF	DESCRIPTION
A	6	TAP THRU: M6
B	6	DRILL THRU: ϕ 5.5
C	2	DRILL THRU: ϕ 5.5 / BORE ϕ 10 x 5 DEEP
D	5	TAP M5 X 10 DEEP

MASS \approx 4.9 kg

Tolerances (Unless otherwise stated)				Material 6082 TF AL. ALLOY		Olms In mm.		Scale 1:1		THIRD ANGLE PROJECTION		GA No. V/FX/000	
X \pm 0.5				Finish BLK-ANODISE		1 OFF		ROYAL GREENWICH OBSERVATORY, HASTINGS CASTLE, HAILSHAM SUSSEX.		The 4.2m A+G UNIT - LARGE FIBRE OPTIC FEED FLAT BEARING SUPPORT PLATE		Drawing No. W/FX/005	
Issue	Mod. No.	Date	Drawn By	Issue	Mod. No.	Date	Drawn By	Drng. No.	No. Rep.	Used on	5		

REMOVE ALL SHARP EDGES



HOLE NO.	DESCRIPTION
A 1	DRILL THRU, Ø6.6
B 3	DRILL THRU Ø6.6 (30MM Ø1.6 LEED)
C 13	DRILL THRU Ø6.6 (30MM Ø2.7 LEED) 4 V-SLOTS
D 3	TAP THRU, M6
E 1	REAM Ø 8.01 Ø8.00 THRU
X 11	POIN FROM SURF ON 45° TAP M6

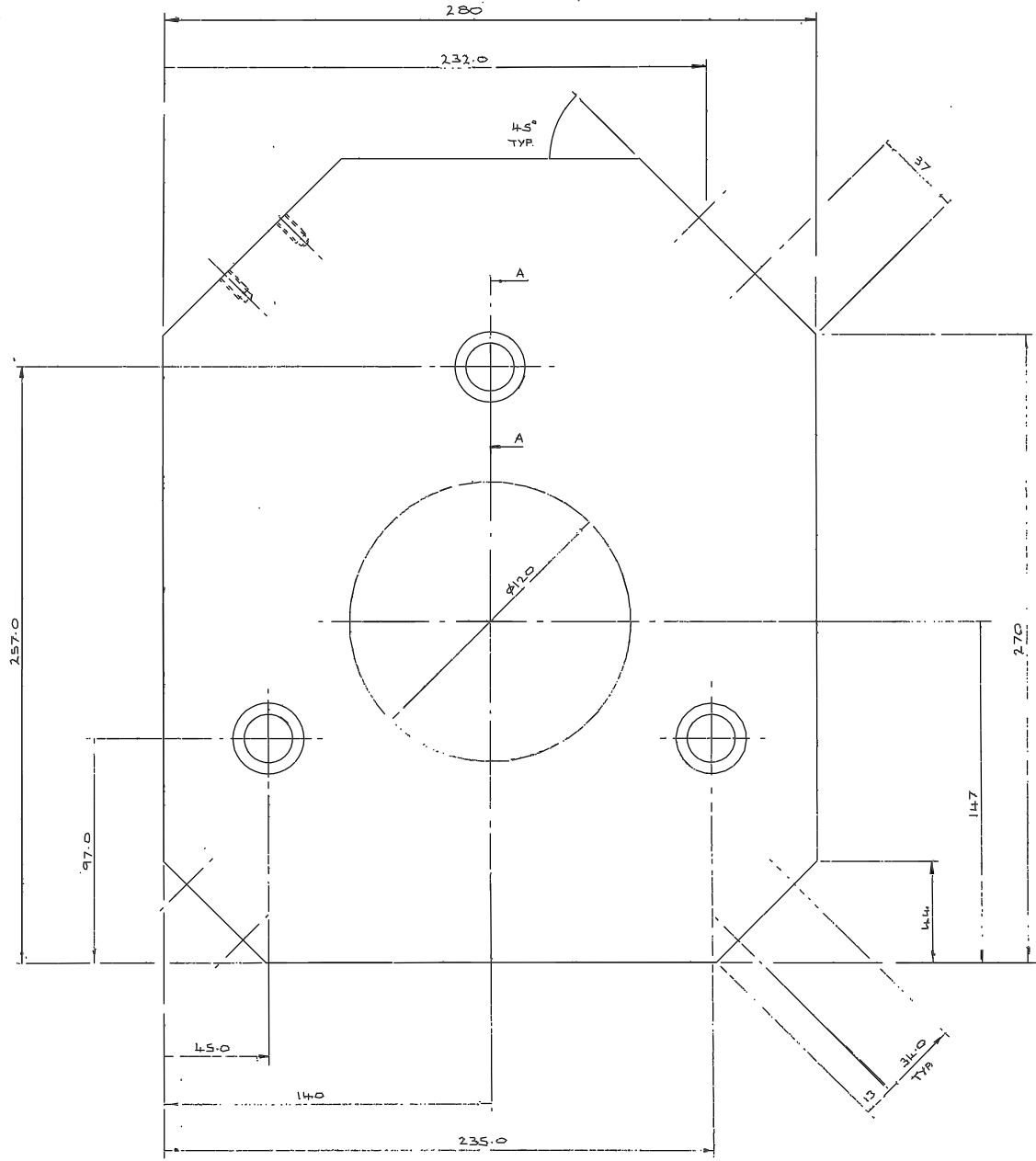
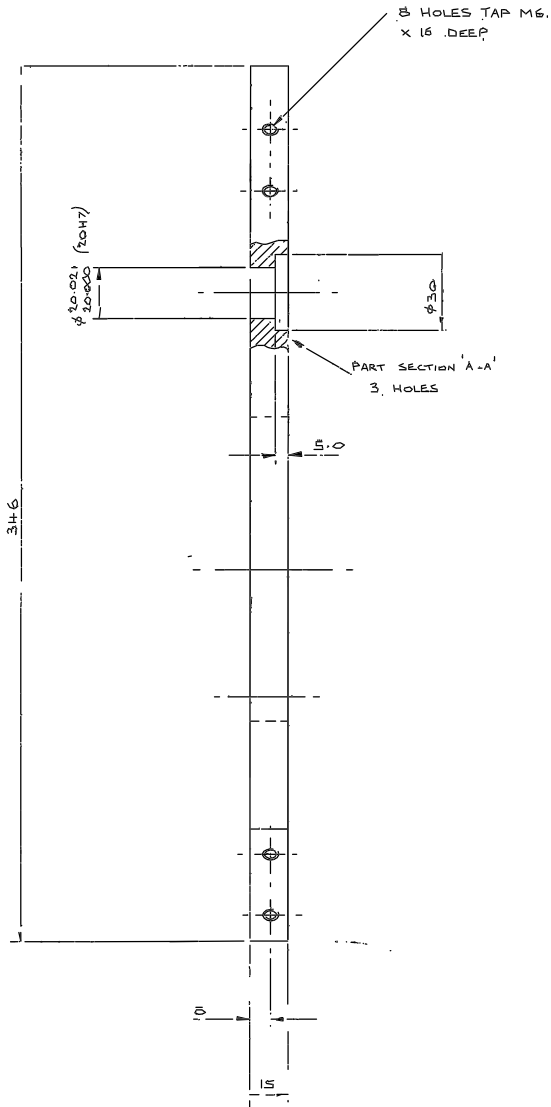
MASS = 728 kg

Tolerances (Unless otherwise stated)				Material		Finish		Dimms, in m.m		Scale		THIRD ANGLE PROJECTION		Title	
Issue	Mod. No.	Date	Drawn By	Issue	Mod. No.	Date	Drawn By	Cast Al.	Tooling Plate	Dimm.	Scale	Proj.	Scale	Proj.	Scale
								CAST AL.	TOOLING PLATE	ROYAL GREENWICH OBSERVATORY, HERSTMONCEUX CASTLE, HALSHAM:	4.2 m	1:2	A + G	LARGE FIBRE OPTIC FEED FLAT	GA. No. V/FX/000
								FINISH: BLACK ANODISE							

Drawing No.
V/FX/004

Drawing No. W/FX/003

REMOVE ALL SHARP EDGES.

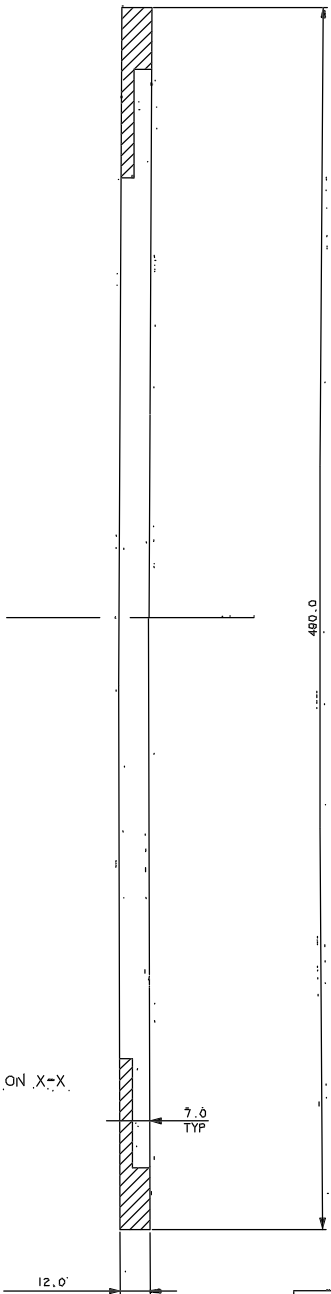


MASS 3.2 kg

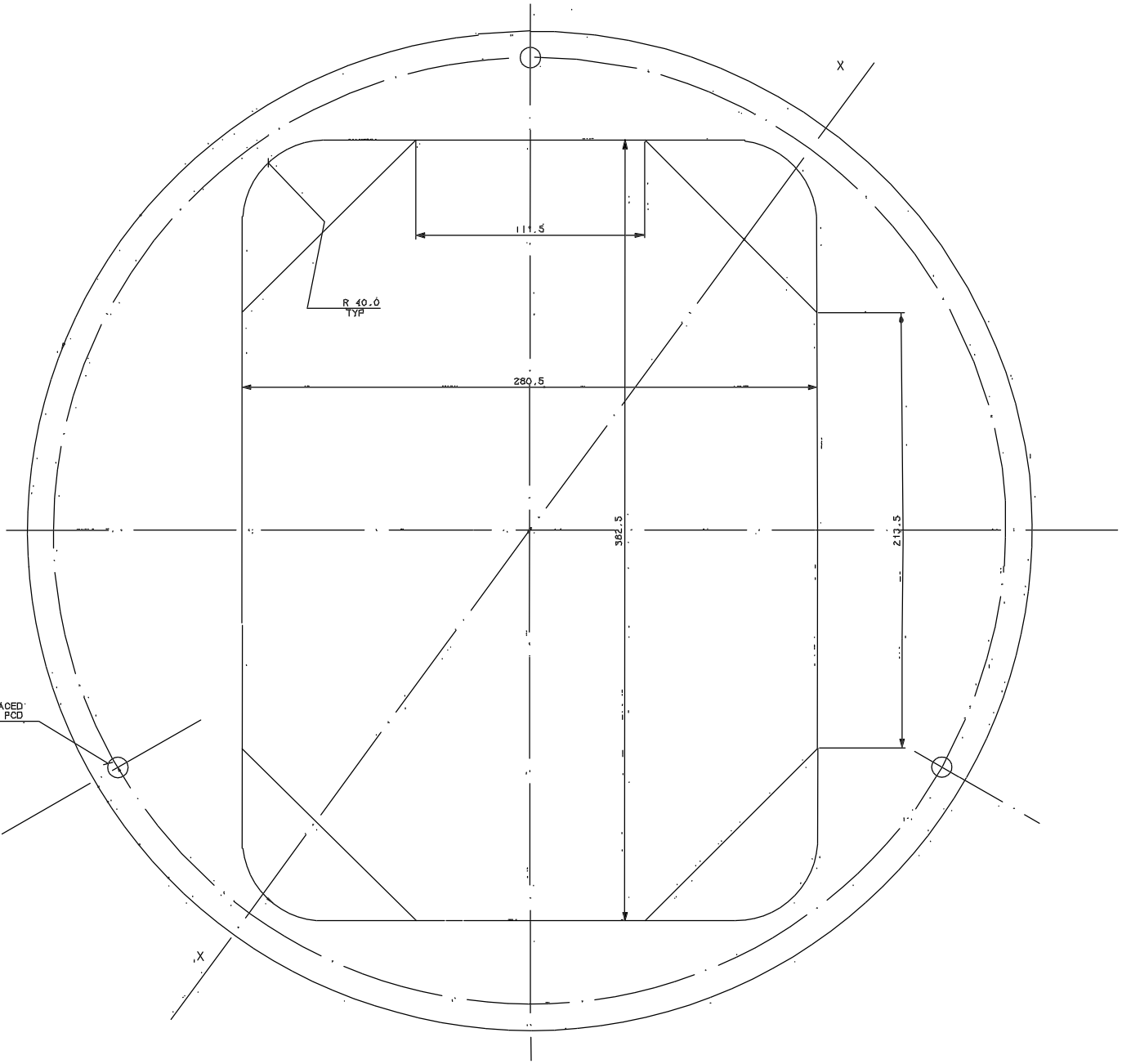
				Tolerances (unless otherwise stated)				Material 6062 TF AL. ALLOY		Dimns in m.m.		Scale 1:1		THIRD ANGLE PROJECTION		G.A. No. W/FX/001			
				X ± 0.5				Finish BLK. ANODISE		1 OFF		ROYAL GREENWICH OBSERVATORY, HERSTMONCEUX CASTLE, HAILSHAM		Title 4.2m A+G UNIT - LARGE FIBRE OPTIC FEED FLAT MIRROR SUPPORT		Drawing No. W/FX/003			
				XX ± 0.1				Used on		Dig. No.		Nn. Req.		3					
Issue				Mod. No.				Date				Drawn By							
				17-3-86				R3W											

Drawing No:
W /FX/002A

SECTION ON X-X




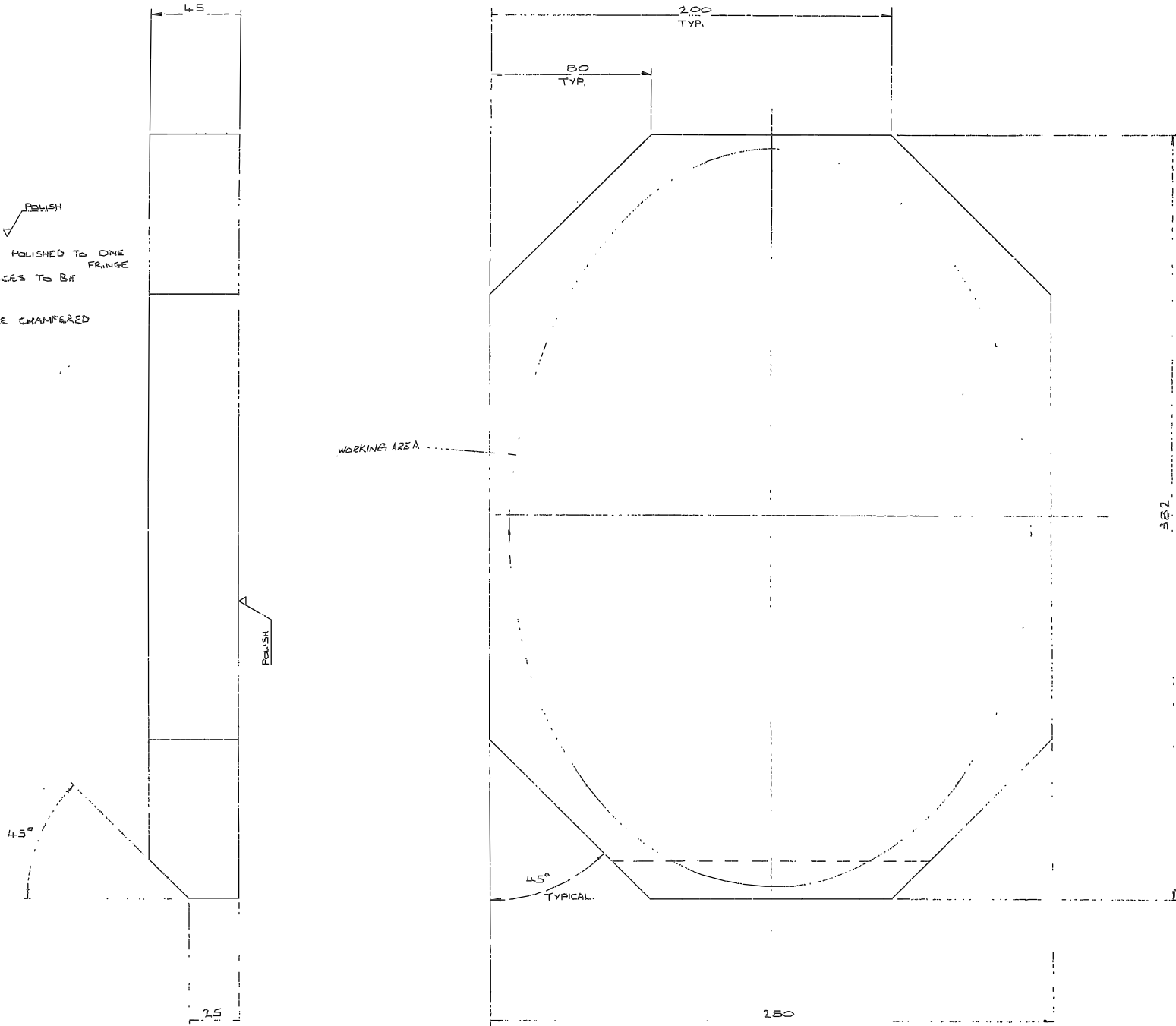
3 HOLES Ø10 SPACED AS SHOWN ON 464 PCD



								Tolerance (Unless otherwise stated)		Material		Dimns. in m.m.		Scale 1:1		THIRD ANGLE PROJECTION		6A No.	
								X +/-		AL ALLOY		ROYAL GREENWICH OBSERVATORY		Title		OPTICS COATING PLATE FOR LARGE FEED FLAT		4.2 A&G	
								X.X +/- 0.1		Finish		HERSTMONCEUX CASTLE		No. Req.		W /FX/002A		Drawing No.	
								X.XX +/-		NONE		HAILSHAM SUSSEX		Used on					
Issue	Mod.No	Date	Drawn by	Issue	Mod.No	Date	Drawn by												
				JAN 88	BTH														

NOTE

SURFACE MARKED  POLISH
 TO BE OPTICALLY POLISHED TO ONE FRINGE
 ALL OTHER SURFACES TO BE FINE GREY
 ALL EDGES TO BE CHAMFERED 1 x 45°

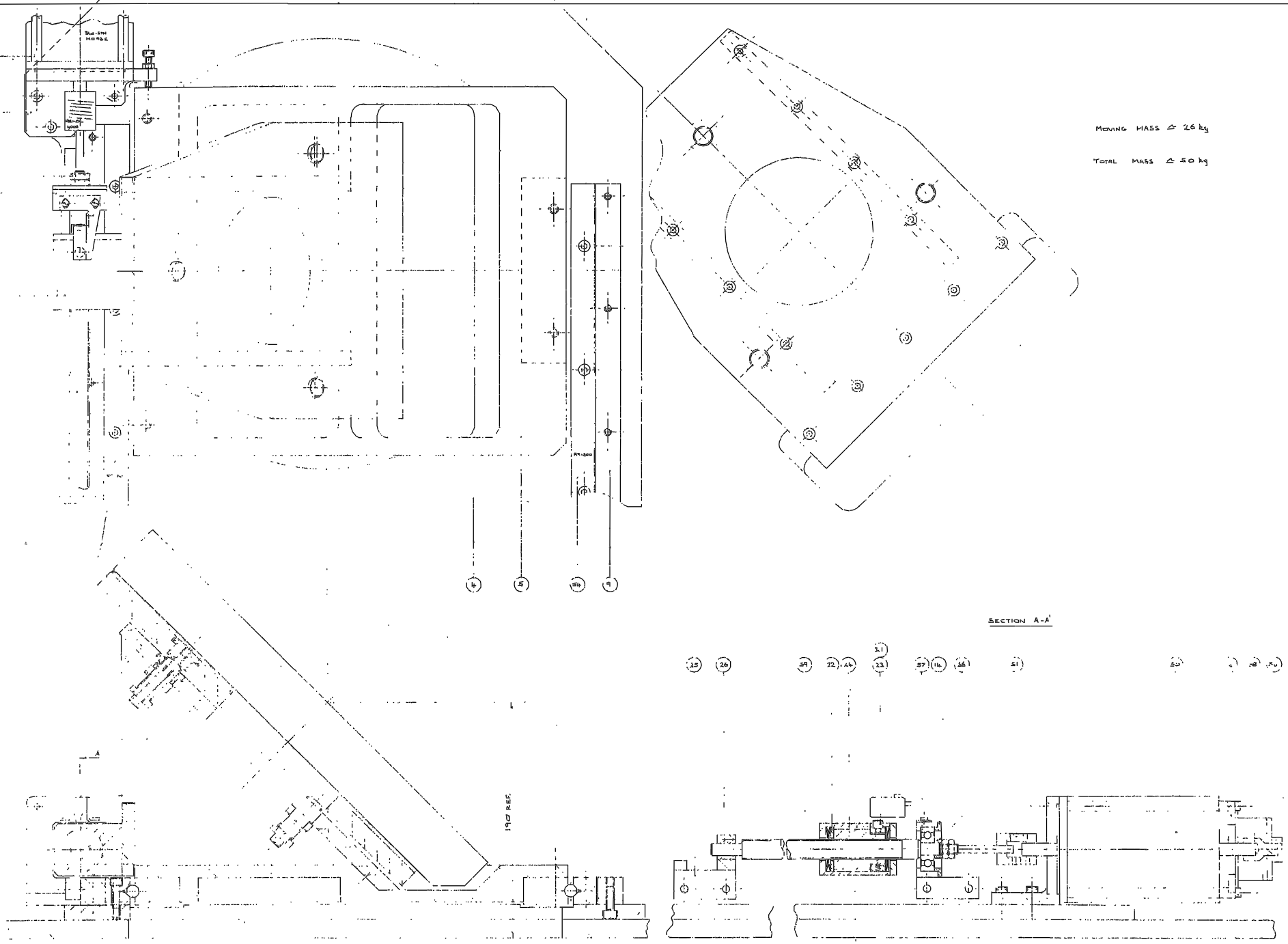


MASS ≈ 11 kg

								Tolerances (Unless otherwise stated)	Material	Dimens in mm.		Scale	THIRD ANGLE PROJECTION		G.A. No. W/FX/001
								X ± 0.5	DURAN 50			1:1			Drawing No.
								XX ±	SEE NOTE	Drp. No.	No. Req.		Title		W/FX/002
								XXX ±	Used on			4.2m A+G UNIT - LARGE FIBRE OPTIC FEED FLAT MIRROR			
Issue	Mod. No.	Date	Drawn By	Issue	Mod. No.	Date	Drawn By								

Drwg. No.
V/FX/000

(15)
(17)
(18)
(19)
(20)
(21)
(22)
(23)
(24)
(25)
(26)
(27)
(28)
(29)
(30)
(31)
(32)
(33)
(34)
(35)
(36)
(37)
(38)
(39)
(40)
(41)
(42)
(43)
(44)
(45)
(46)
(47)
(48)
(49)
(50)
(51)



MOVING MASS Δ 26 kg
TOTAL MASS Δ 50 kg

SECTION A-A'

<table border="1"> <tr> <td>Issue</td> <td>Mod. No.</td> <td>Date</td> <td>Drawn By</td> <td>Issue</td> <td>Mod. No.</td> <td>Date</td> <td>Drawn By</td> </tr> <tr> <td></td> <td></td> <td></td> <td></td> <td></td> <td></td> <td></td> <td></td> </tr> </table>								Issue	Mod. No.	Date	Drawn By	Issue	Mod. No.	Date	Drawn By									<table border="1"> <tr> <td colspan="2">Title prices (Unless otherwise stated)</td> </tr> <tr> <td>X 1</td> <td></td> </tr> <tr> <td>XX 1</td> <td></td> </tr> <tr> <td>XXX 1</td> <td></td> </tr> </table>		Title prices (Unless otherwise stated)		X 1		XX 1		XXX 1		<table border="1"> <tr> <td colspan="2">Material</td> </tr> <tr> <td colspan="2">Finish</td> </tr> </table>		Material		Finish		<table border="1"> <tr> <td colspan="2">Dimens. in mm.</td> <td colspan="2">Scale 1:1</td> </tr> <tr> <td colspan="4">ROYAL GREENWICH OBSERVATORY, HERSTMONCEUX CASTLE, HAILSHAM SUSSEX.</td> </tr> </table>		Dimens. in mm.		Scale 1:1		ROYAL GREENWICH OBSERVATORY, HERSTMONCEUX CASTLE, HAILSHAM SUSSEX.				<table border="1"> <tr> <td colspan="2">Title</td> </tr> <tr> <td colspan="2">L-2 m A+G UNIT LARGE FIBRE OPTIC FEED FLAT</td> </tr> </table>		Title		L-2 m A+G UNIT LARGE FIBRE OPTIC FEED FLAT		<table border="1"> <tr> <td colspan="2">G.A. No.</td> </tr> <tr> <td colspan="2">Drawing No. V/FX/000</td> </tr> </table>		G.A. No.		Drawing No. V/FX/000	
Issue	Mod. No.	Date	Drawn By	Issue	Mod. No.	Date	Drawn By																																																						
Title prices (Unless otherwise stated)																																																													
X 1																																																													
XX 1																																																													
XXX 1																																																													
Material																																																													
Finish																																																													
Dimens. in mm.		Scale 1:1																																																											
ROYAL GREENWICH OBSERVATORY, HERSTMONCEUX CASTLE, HAILSHAM SUSSEX.																																																													
Title																																																													
L-2 m A+G UNIT LARGE FIBRE OPTIC FEED FLAT																																																													
G.A. No.																																																													
Drawing No. V/FX/000																																																													