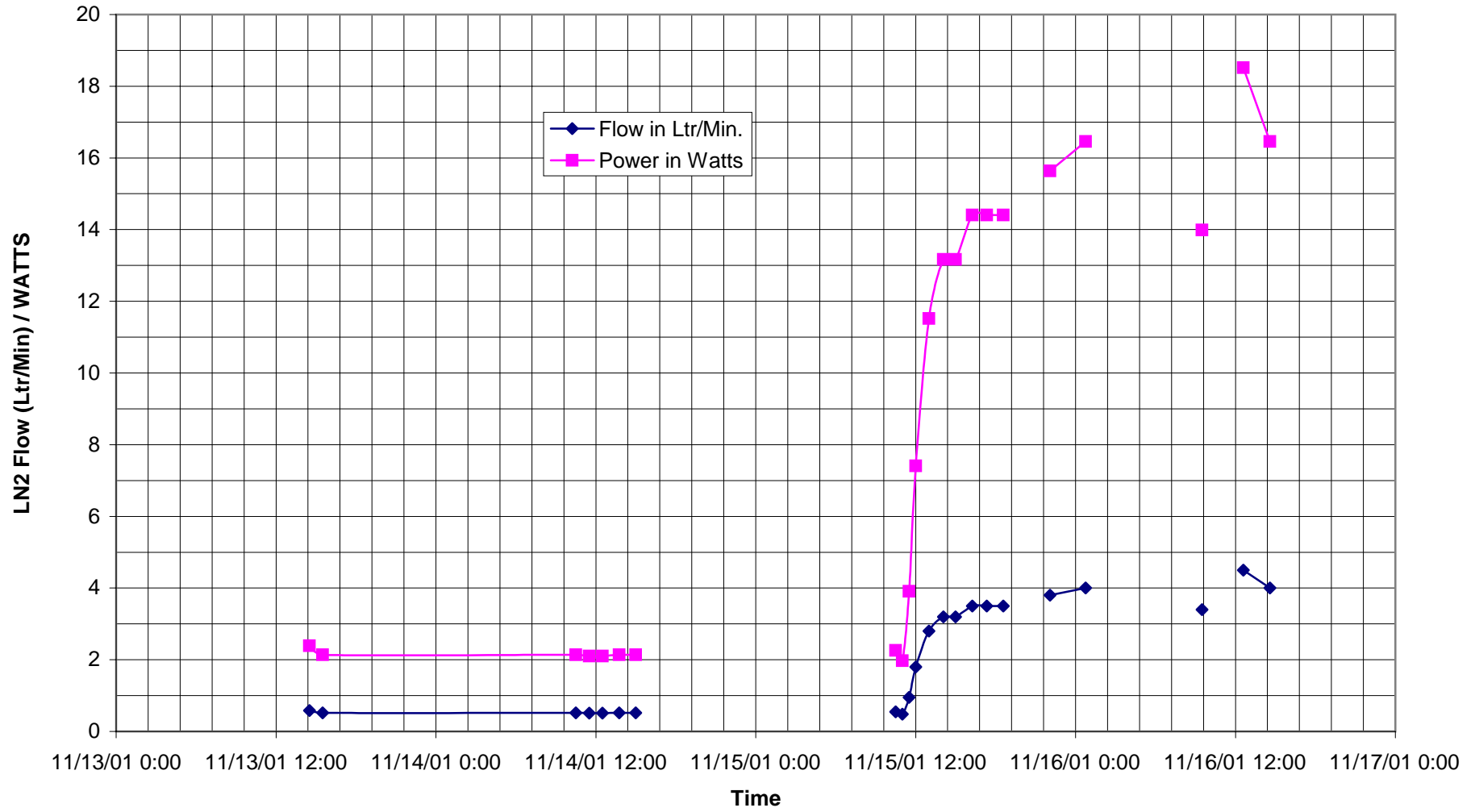
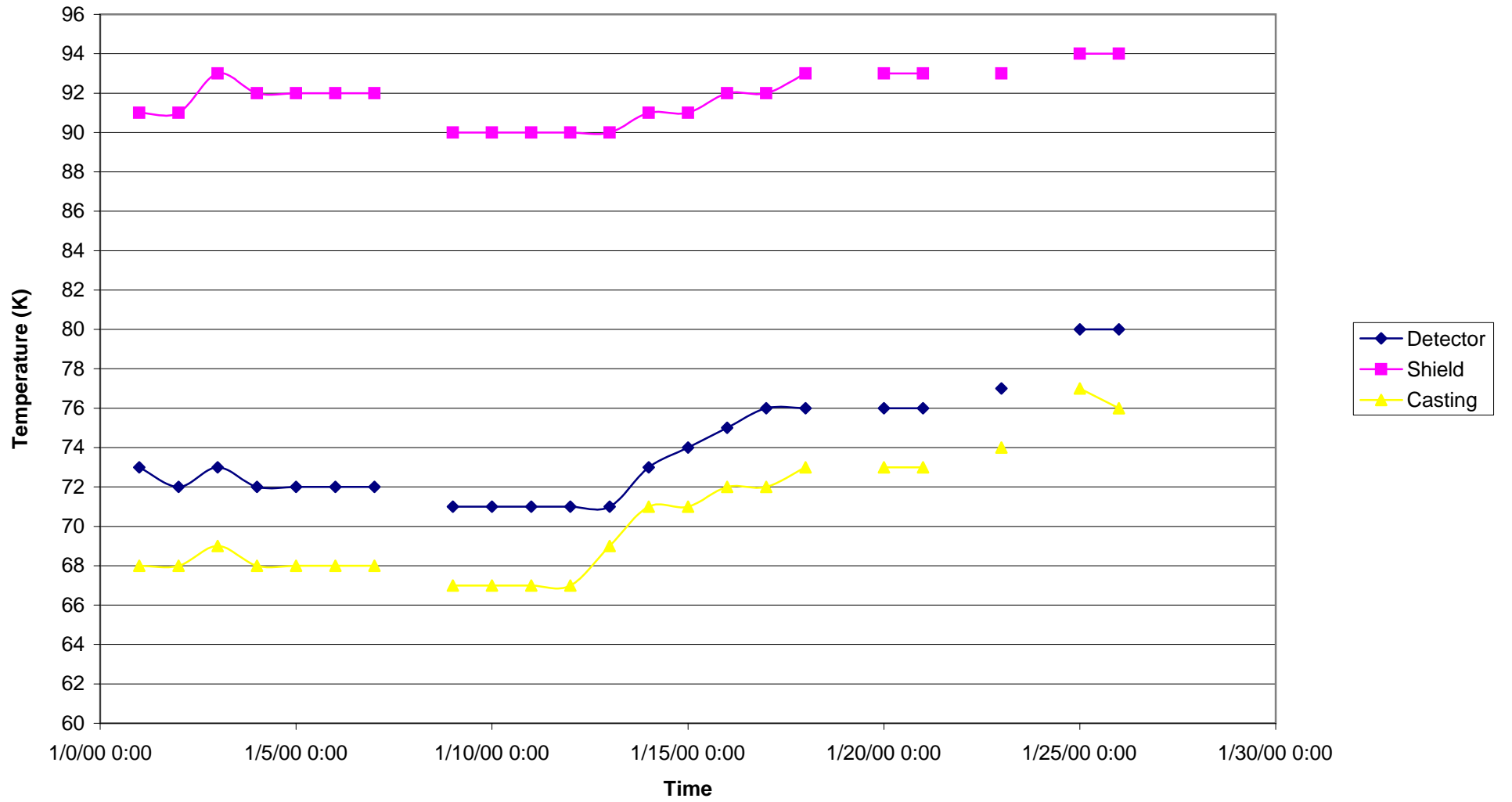


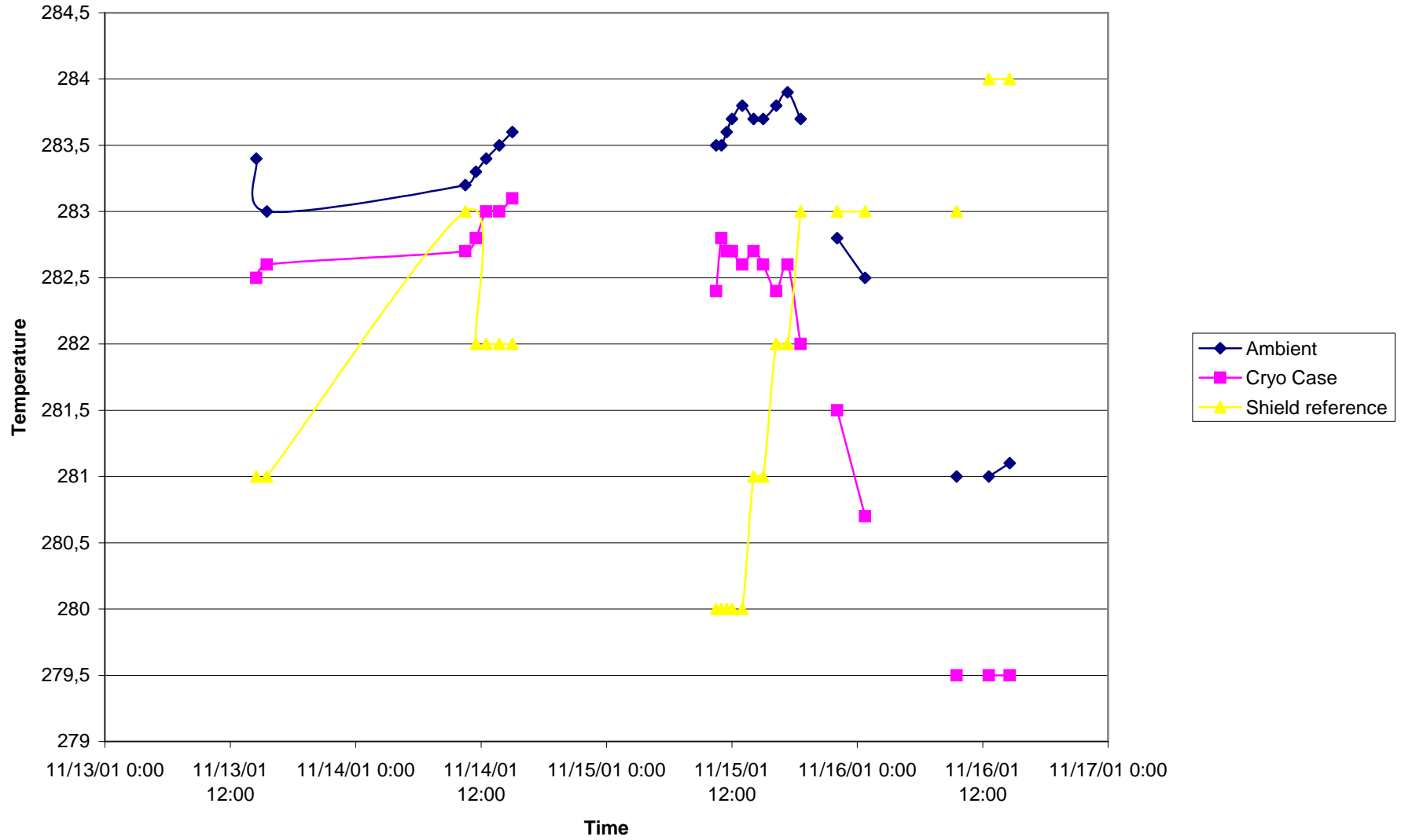
# LN2 Flow



# Internal Temperatures



### ambient effect



**Thermal Load tests of INGRID.**

Notes	Date and Time	Flow in Ltr/Min.	Power in Watts	Vacuum Pressure	Ambient	TEMPERATURES				
						Cryo Case	Detector	Shield	Casting	
	11/13/01 14:30	0,58	2,386831276	3,70E-07	283,4	282,5	73	91	68	281
	11/13/01 15:30	0,52	2,139917695	4,20E-07	283	282,6	72	91	68	281
	11/14/01 10:30	0,52	2,139917695	2,00E-06	283,2	282,7	73	93	69	283
	11/14/01 11:30	0,51	2,098765432	2,00E-06	283,3	282,8	72	92	68	282
	11/14/01 12:30	0,51	2,098765432	2,00E-06	283,4	283	72	92	68	282
	11/14/01 13:45	0,52	2,139917695	2,10E-06	283,5	283	72	92	68	282
	11/14/01 15:00	0,52	2,139917695	3,10E-06	283,6	283,1	72	92	68	282
LN2 Fill	11/15/01 10:00									
	11/15/01 10:30	0,55	2,263374486	2,20E-06	283,5	282,4	71	90	67	280
CCC shutdown	11/15/01 11:00	0,48	1,975308642	2,90E-06	283,5	282,8	71	90	67	280
	11/15/01 11:30	0,95	3,909465021	1,00E-04	283,6	282,7	71	90	67	280
	11/15/01 12:00	1,8	7,407407407	1,10E-04	283,7	282,7	71	90	67	280
	11/15/01 13:00	2,8	11,52263374	1,50E-05	283,8	282,6	71	90	69	280
	11/15/01 14:05	3,2	13,16872428	5,70E-06	283,7	282,7	73	91	71	281
	11/15/01 15:00	3,2	13,16872428	4,40E-06	283,7	282,6	74	91	71	281
	11/15/01 16:15	3,5	14,40329218	3,60E-06	283,8	282,4	75	92	72	282
	11/15/01 17:20	3,5	14,40329218	3,20E-06	283,9	282,6	76	92	72	282
	11/15/01 18:35	3,5	14,40329218	3,00E-06	283,7	282	76	93	73	283
LN2 Fill	11/15/01 18:50									
	11/15/01 22:05	3,8	15,63786008	2,40E-06	282,8	281,5	76	93	73	283
	11/16/01 0:45	4	16,46090535	2,70E-06	282,5	280,7	76	93	73	283
LN2 Fill	11/16/01 1:00									
	11/16/01 9:30	3,4	13,99176955	2,30E-06	281	279,5	77	93	74	283
LN2 Fill (Flow 2.1	11/16/01 11:00			2,40E-06						
	11/16/01 12:35	4,5	18,51851852	2,00E-06	281	279,5	80	94	77	284
	11/16/01 14:35	4	16,46090535	3,00E-06	281,1	279,5	80	94	76	284