

A PRESENTATION ON THE
SITE TESTING PROJECT RUN BY
THE ROYAL OBSERVATORY EDINBURGH,
1971-75: LA PALMA
AND OTHER SITES INVESTIGATED

Dr. Thomas Gough
Royal Observatory Edinburgh Site Tester 1971-74
19 March 2018
ING/Mercator seminars
La Palma

THE ROYAL OBSERVATORY EDINBURGH
SITE TESTING PROJECT
1971 - 1975

Run by **BENNET McINNES**

The years 1968 – 1971 leading to the site testing

A personal background

1968 Voluntary service in Lesotho. An interest in astronomy began

1969 – 1971 Amateur work; variable star observations.

- Binoculars and home built telescopes (~18cm. Newtonian)

- Built a 16 inch (40cm.) f 8 Newtonian using professionally made optics. This was used to observe U Gem and Z Cam variables which, by amateur standards, are faint and required a larger telescope.

LESOTHO



■ National Capital (273,000 ± 001)
 ● Chief town of district (cities more than 100)













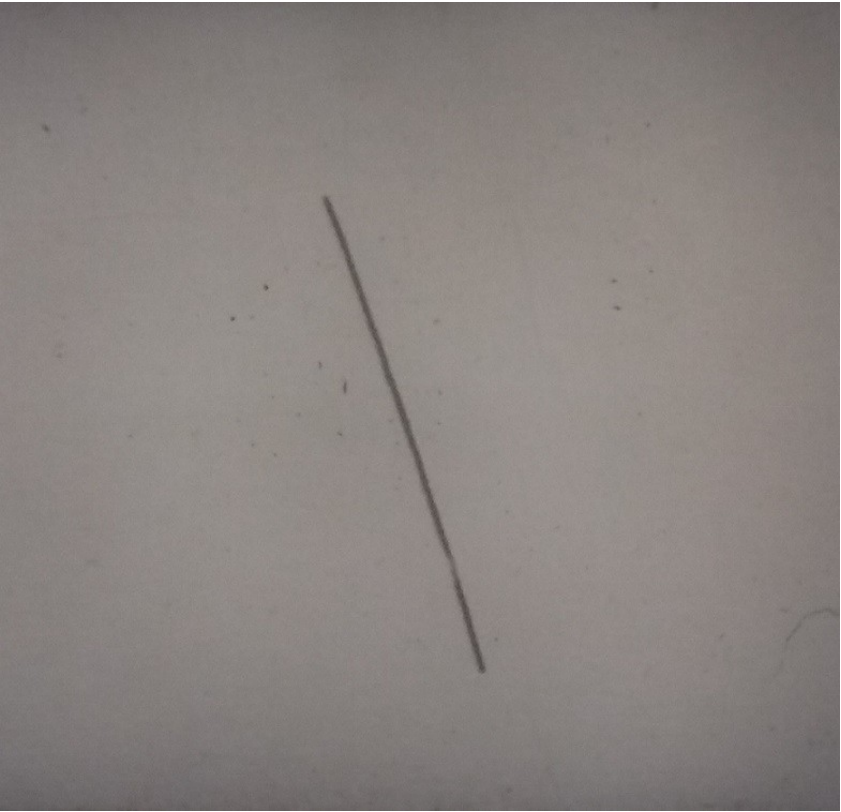
K. HOLLAN LESOTHO LTD.
HA MASASA.
TLOKOENG.



THE POLARIS TRAIL TELESCOPE



Trails from the Polaris Trail Telescope



0.8"



6.0"

TENERIFE

Izana

January to November 1972
February to November 1975





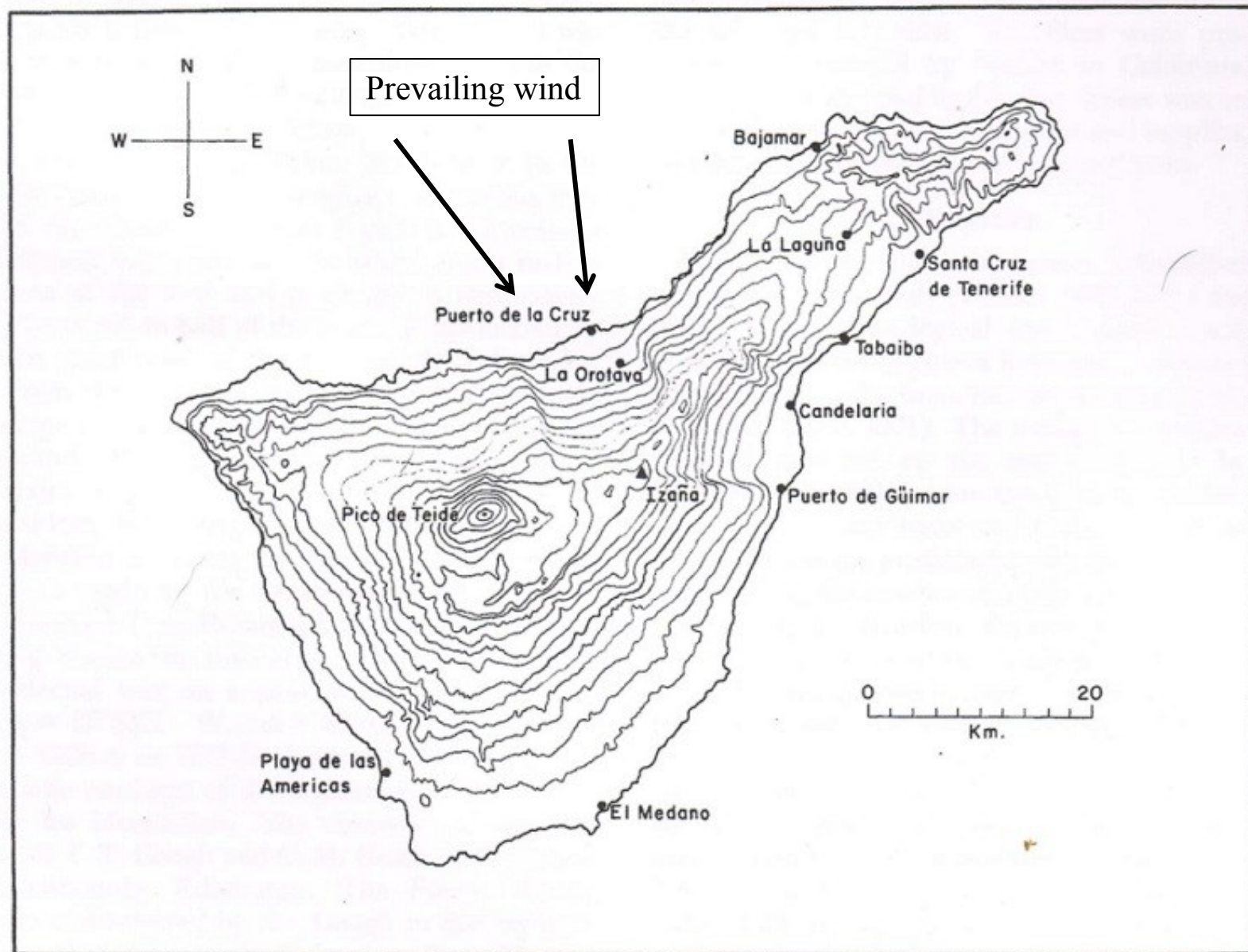
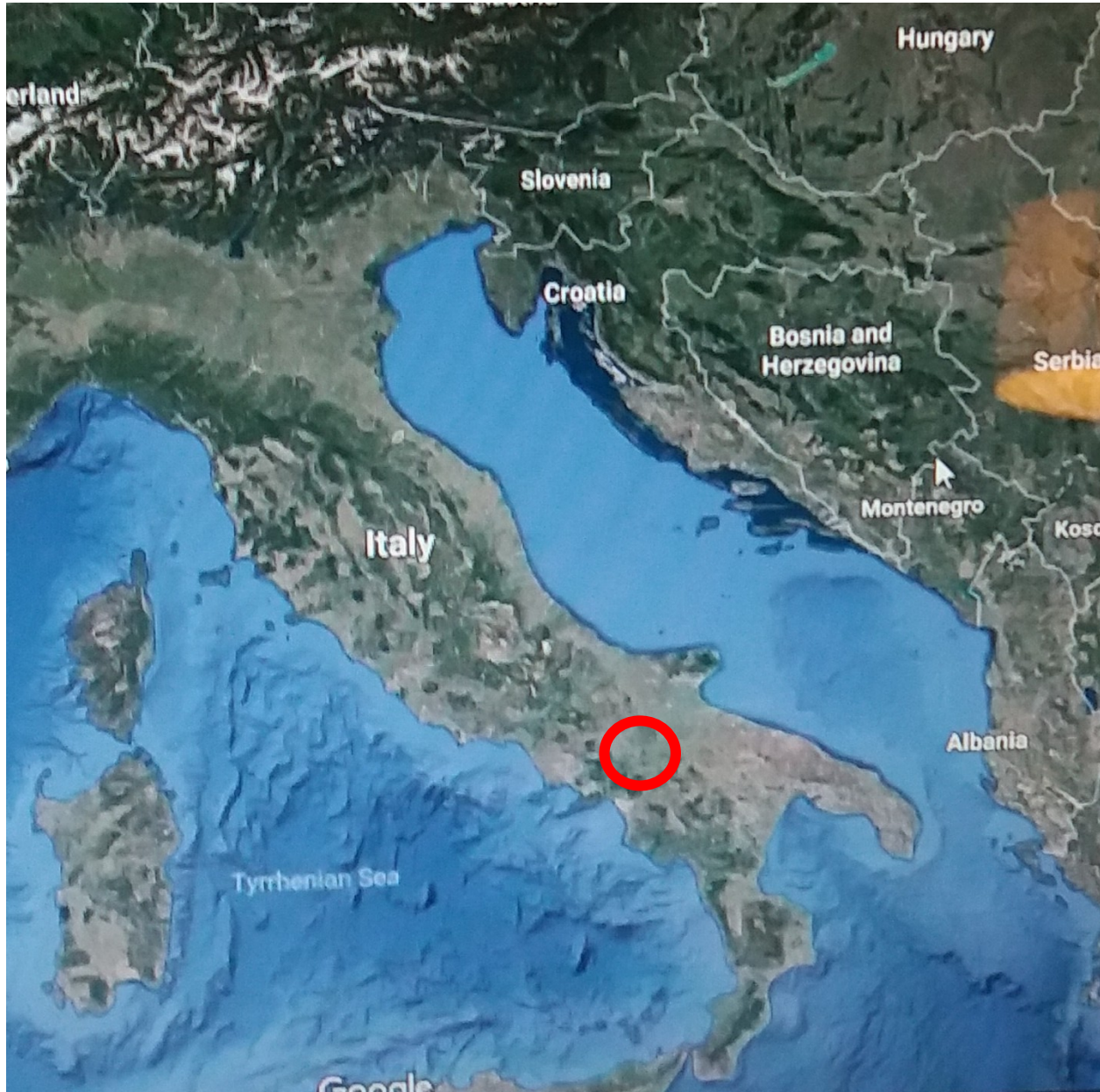


FIG. 1 — Contour map of the island of Tenerife. The contour interval is 200 meters.

ITALY

Near Castelgrande
(About 80 km ESE of Naples)

?December 1971 to Summer 1972





LA PALMA

Fuente Nueva

6th August to 24th September 1972

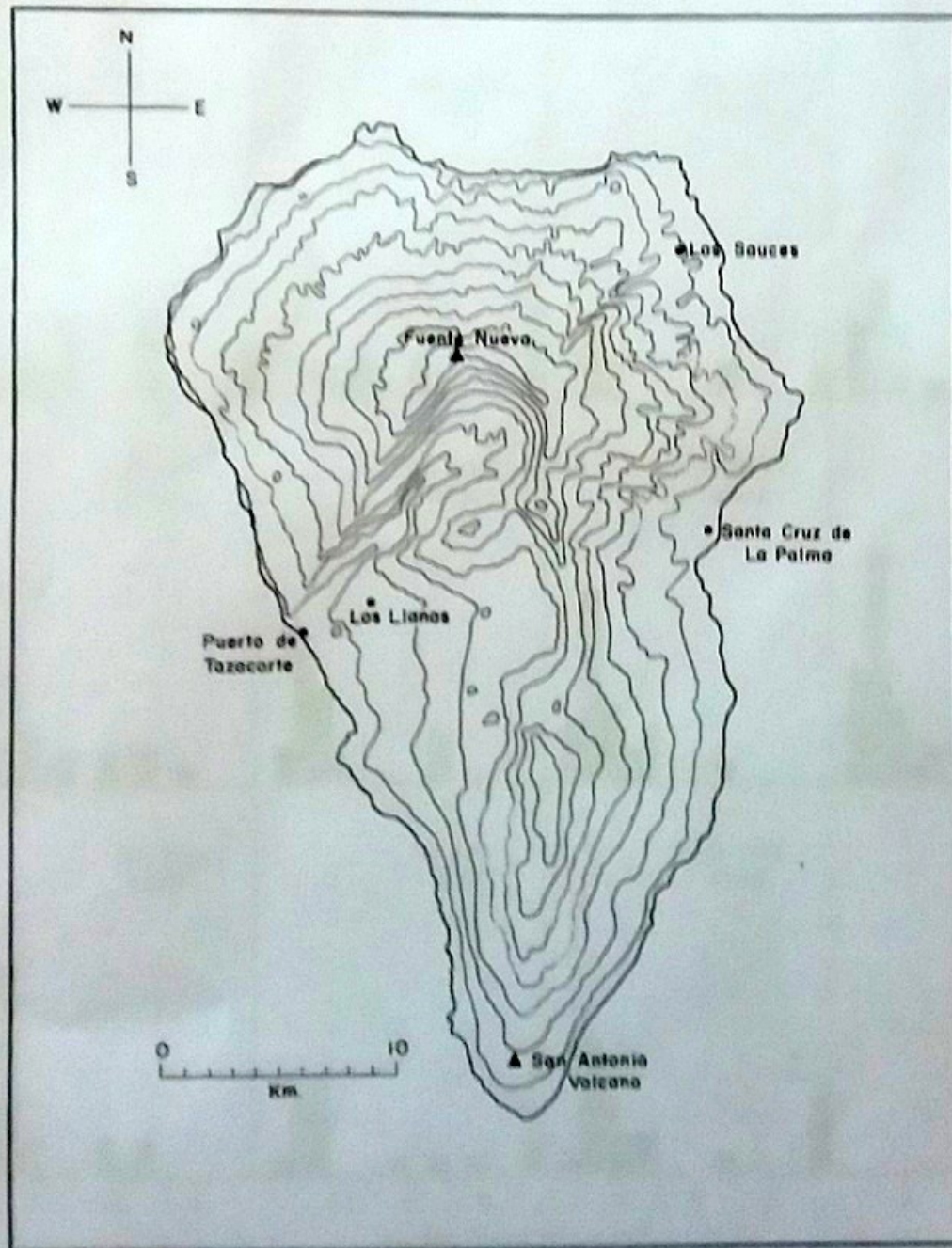


FIG. 2 — Contour map of the island of La Palma. The contour interval is 250 meters.

From Santa Cruz Palma 3 hours

From Santa Cruz bad

Caldera-

Rancho los pinchacos

Finca

222
27755

storefile

To follow always the track of the horse

bridle-road long walk 2 hours

END

35 minutos

Briesta

SARAFIA

Barra Garame

Tierras

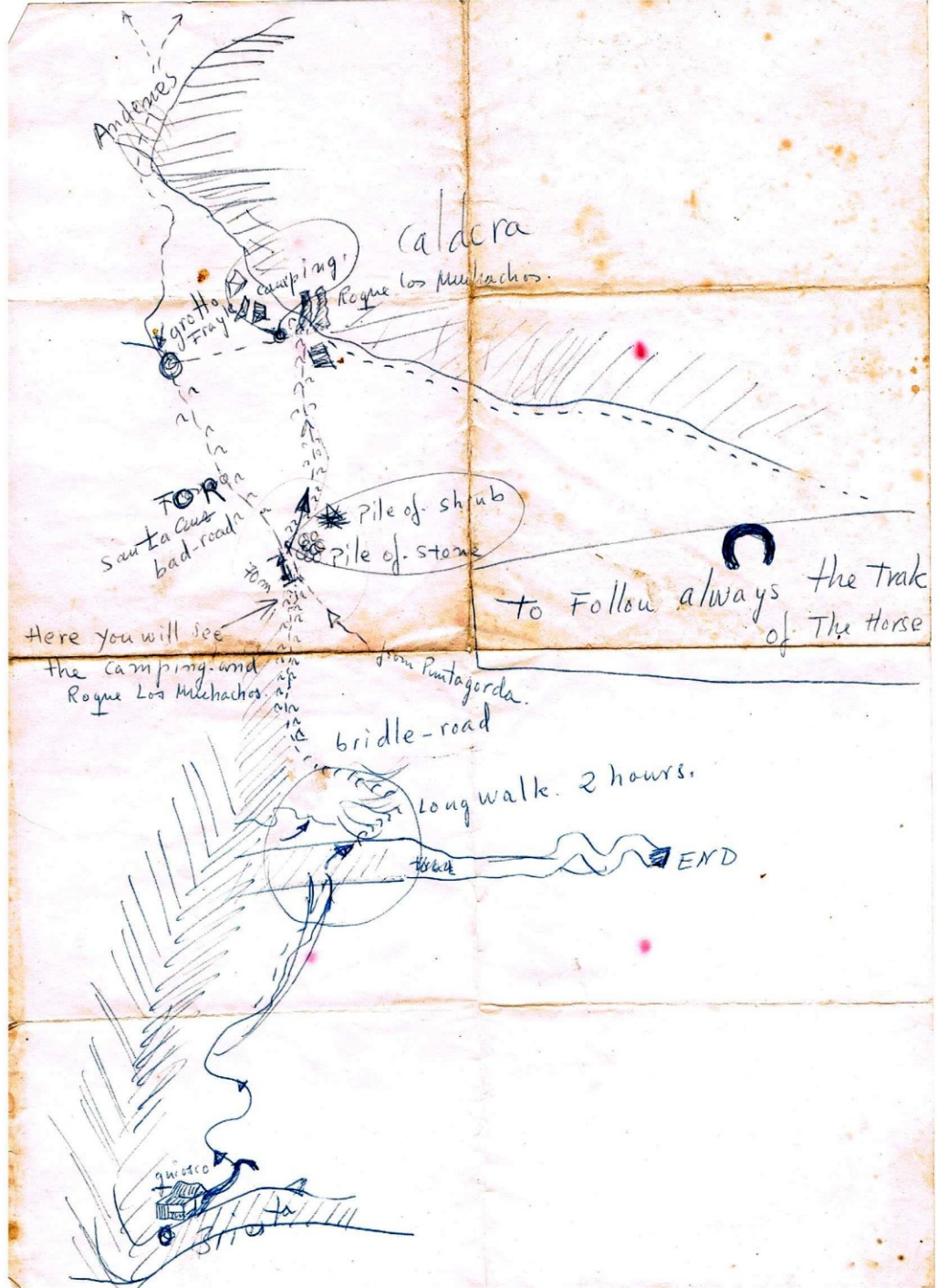
My Home



gaisaco

Jarajia





Antenas

Calacra

camping

Rogue los Muchachos

groto Fray

Santa Cruz bad-road

TOR

Pile of shrub

Pile of stone

Here you will see the camping and Rogue Los Muchachos

from Pantagorda

bridle-road

long walk. 2 hours.

track END

to Follow always the track of The horse

guatco













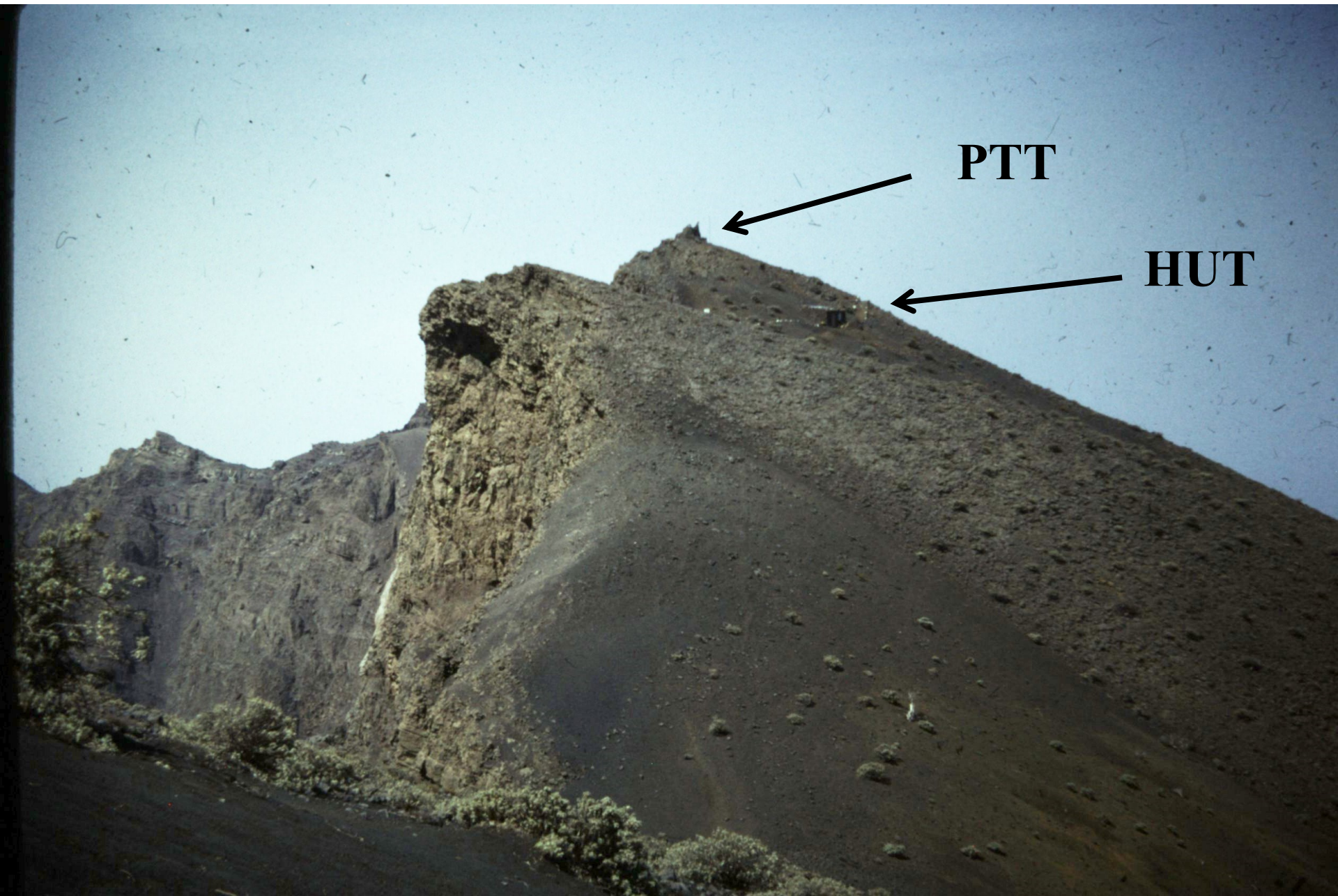


FOGO
Cape Verde Islands

?April – ?July 1973







PTT

HUT







MADEIRA

Encumeada Alta

January 1974 to April 1975











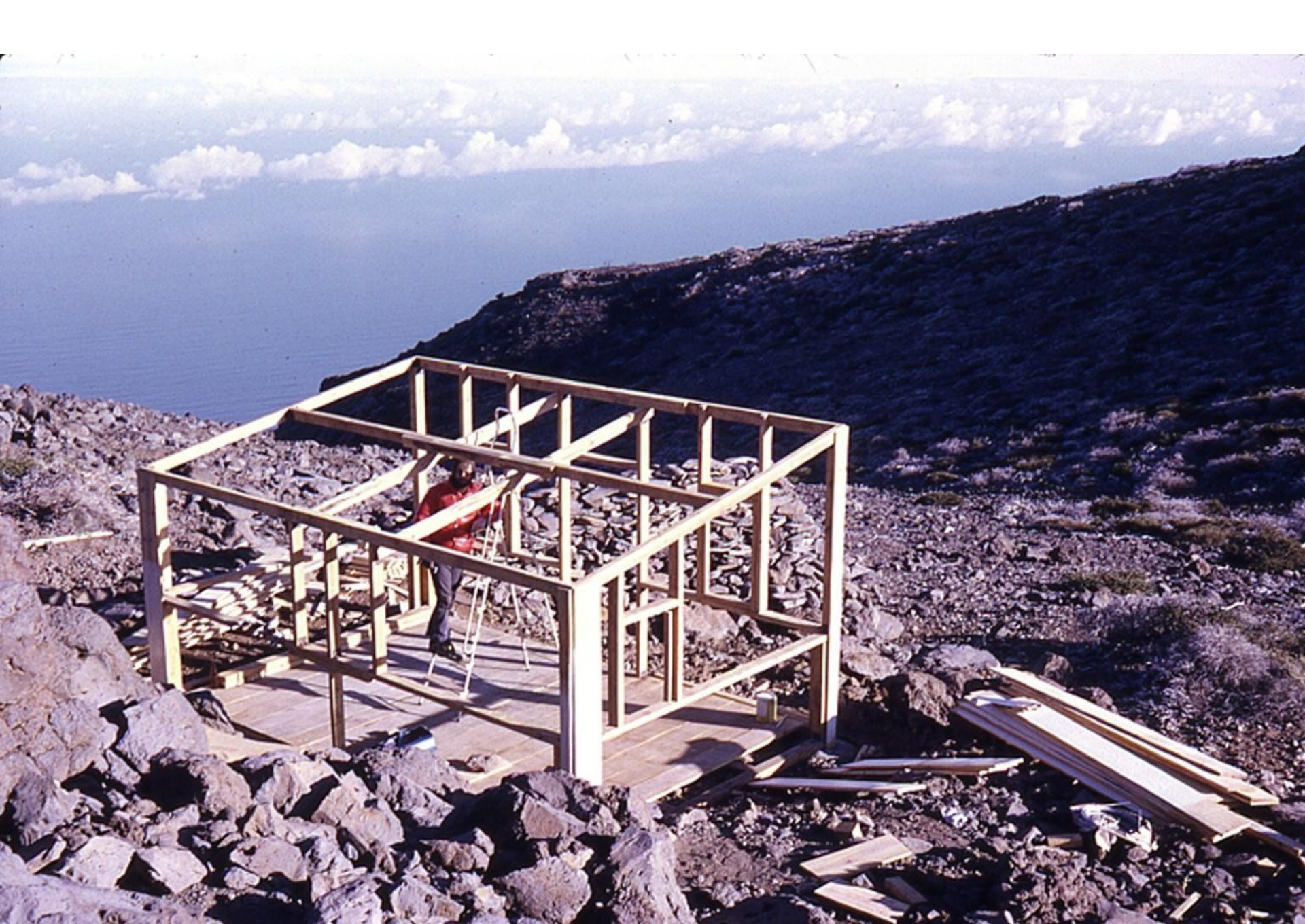




LA PALMA

December 1974 - November 1975

















“ Great Oaks from tiny Acorns grow”

Thank You