

Table 8 : arc-line table "Al/Ca/Mg Neon" (continued)

Line	Symbol	Line	Symbol	Line	Symbol	Line	Symbol
6030.000	NeI	6532.882	NeI	7943.180	NeI	8783.755	NeI
6074.338	NeI	6598.953	NeI	8082.458	NeI	8806.757	MgI
6096.163	NeI	6652.09	NeI	8118.550	NeI	8830.91	NeI
6118.027	NeI	6666.897	NeI	8128.93	NeI	8853.867	NeI
6122.219	CaI	6678.277	NeI	8136.406	NeI	8865.67	NeI b
6128.460	NeI	6707.807	LiI	8248.70	NeI	8919.50	NeI
6143.063	NeI	6717.043	NeI	8259.380	NeI	8988.58	NeI
6163.594	NeI	6929.468	NeI	8266.076	NeI w	9148.68	NeI
6174.883	NeI	7024.051	NeI	8300.326	NeI	9201.76	NeI
6182.146	NeI	7032.413	NeI	8365.75	NeI	9220.05	NeI
6205.778	NeI	7051.294	NeI	8377.607	NeI w	9221.59	NeI
6213.876	NeI	7059.109	NeI	8418.427	NeI	9226.67	NeI
6217.281	NeI	7148.147	CaI	8463.37	NeI	9275.53	NeI
6258.796	NeI	7173.939	NeI	8484.45	NeI	9287.42	AlII
6266.495	NeI	7245.167	NeI	8495.360	NeI	9300.85	NeI
6293.745	NeI	7438.899	NeI	8544.70	NeI	9310.58	NeI
6304.789	NeI	7472.43	NeI	8571.36	NeI	9313.98	NeI
6313.692	NeI	7488.872	NeI	8582.91	NeI	9326.52	NeI
6328.165	NeI	7535.775	NeI	8591.259	NeI	9373.28	NeI
6334.428	NeI	7544.046	NeI	8634.648	NeI	9425.38	NeI
6382.991	NeI	7665.99	KI	8647.05	NeI	9459.21	NeI
6402.247	NeI	7698.959	KI	8654.383	NeI	9486.680	NeI
6439.073	CaI	7724.63	NeI	8679.491	NeI	9534.17	NeI
6444.712	NeI	7833.06	NeI	8681.920	NeI	9547.40	NeI
6462.566	CaI	7839.08	NeI	8704.15	NeI	9665.424	NeI
6493.780	CaI	7927.11	NeI	8771.70	NeI		
6506.528	NeI	7937.01	NeI	8780.622	NeI NeI		

Notes to Table 8 (continued)

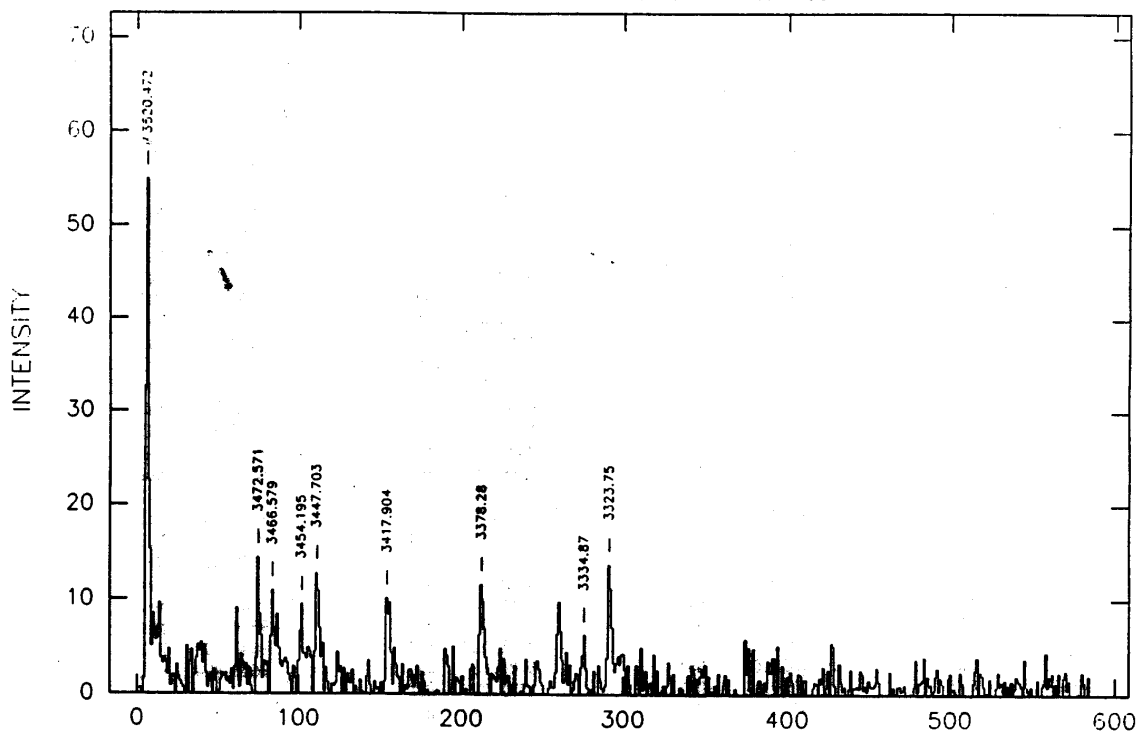
Line	
7665.99	KI resonance line + 2nd order AlI 3832.536
7698.959	KI resonance line
8266.076	weak NeI at 8627.11
8377.607	weak NeI at 8376.41
8865.67	NeI, blend of 8865.759 (4) and 8865.33 (1)

Figure 8 : Bi-alkali spectra (Al/Ca/Mg,Ne)

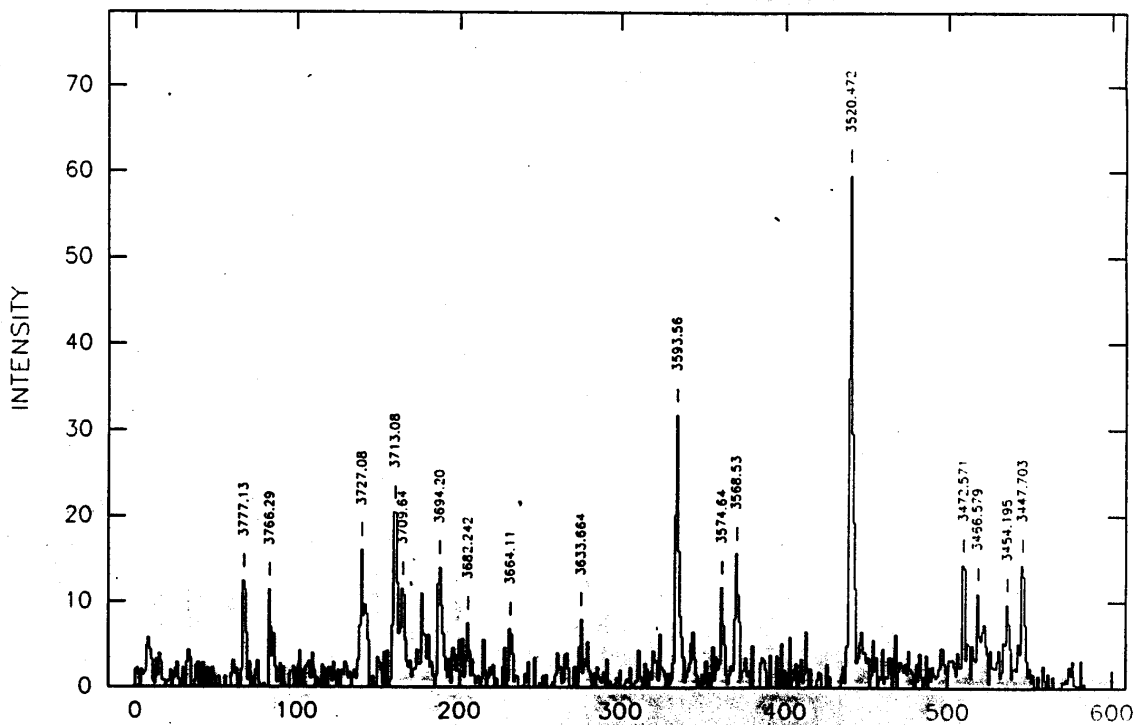
Notes to figure 8

Spectrum	Al/Ca/Mg-Ne	
Camera	IDS 500 mm	
Detector	GEC 3 "GEC BLUE"	
Gratings	R632V for the region 3300 A - 5400 A R600R for the region 5700 A - 9600 A	
Collimator	Al Wide	
Dispersion	32 A/mm or 1.45 pixel/A	
Exposure times	3300 - 5100 A	600 s
	5400 A	300 s
	5700 A	30 s
	6000 - 7500 A	20 s
	7800 A	300 s
	8100 A	600 s
	8400 A	30 s
	8700 A	120 s
	9000 A	300 s
	9300 & 9600 A	600 s

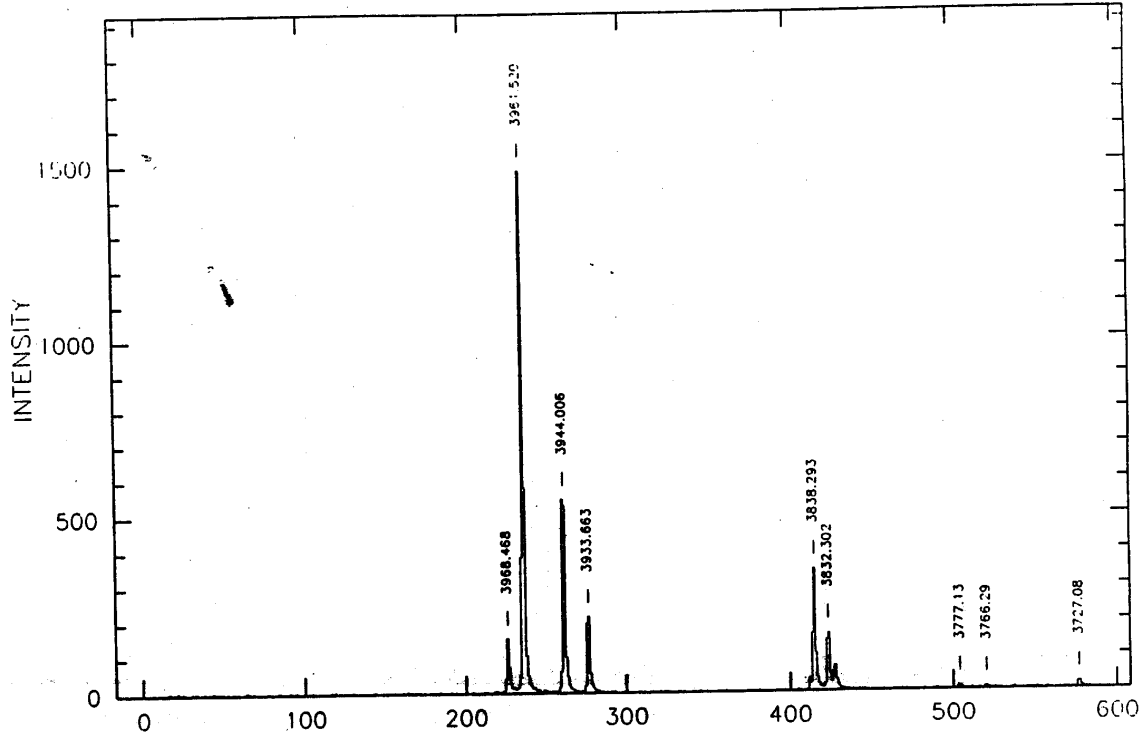
ARC ALK1 R632V 3600



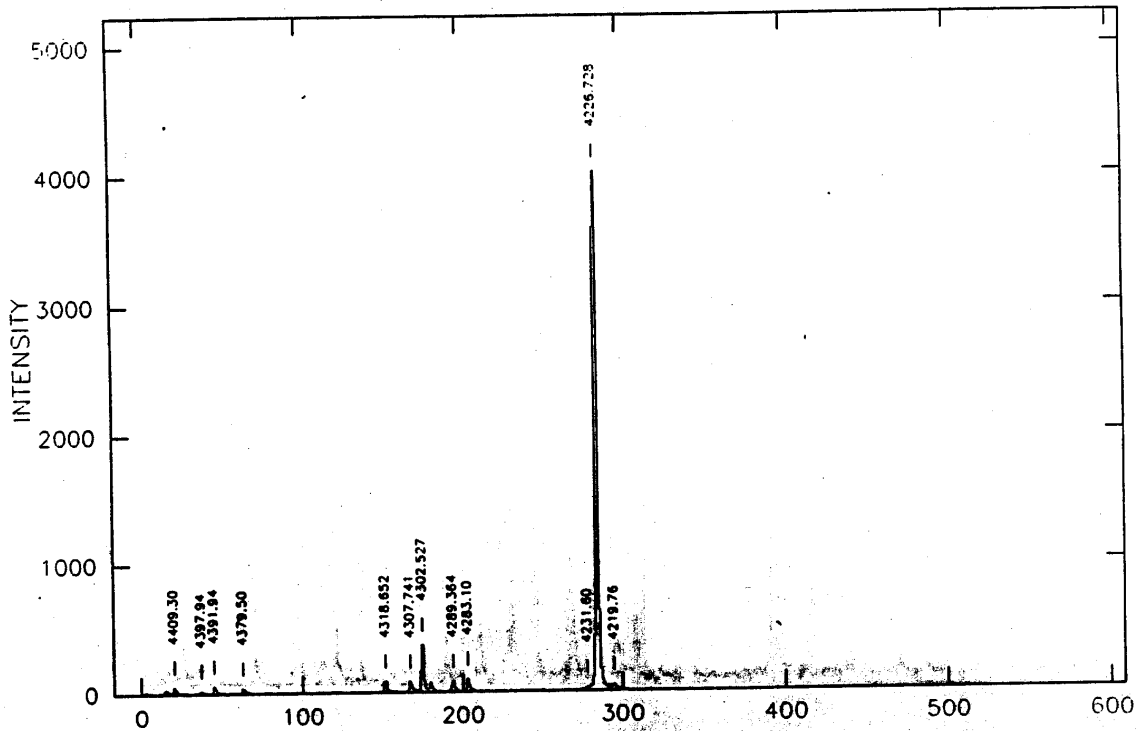
ARC ALK1 R632V 3600



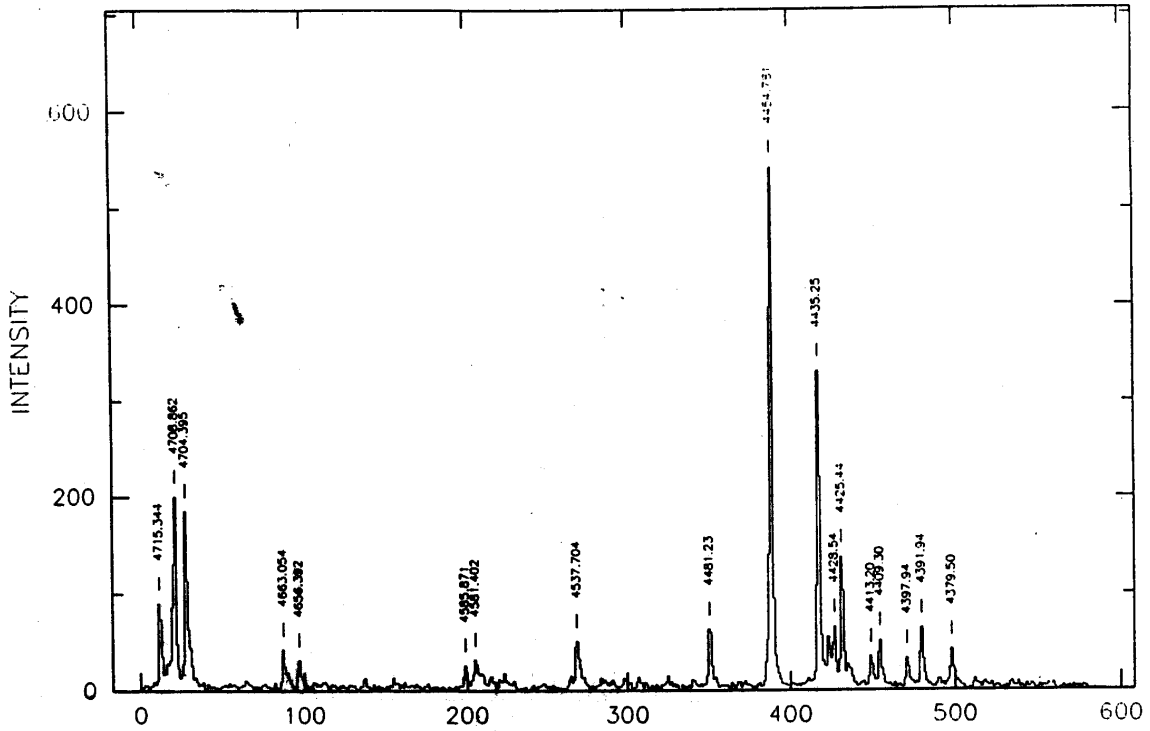
ARC ALK1 R632V 4200



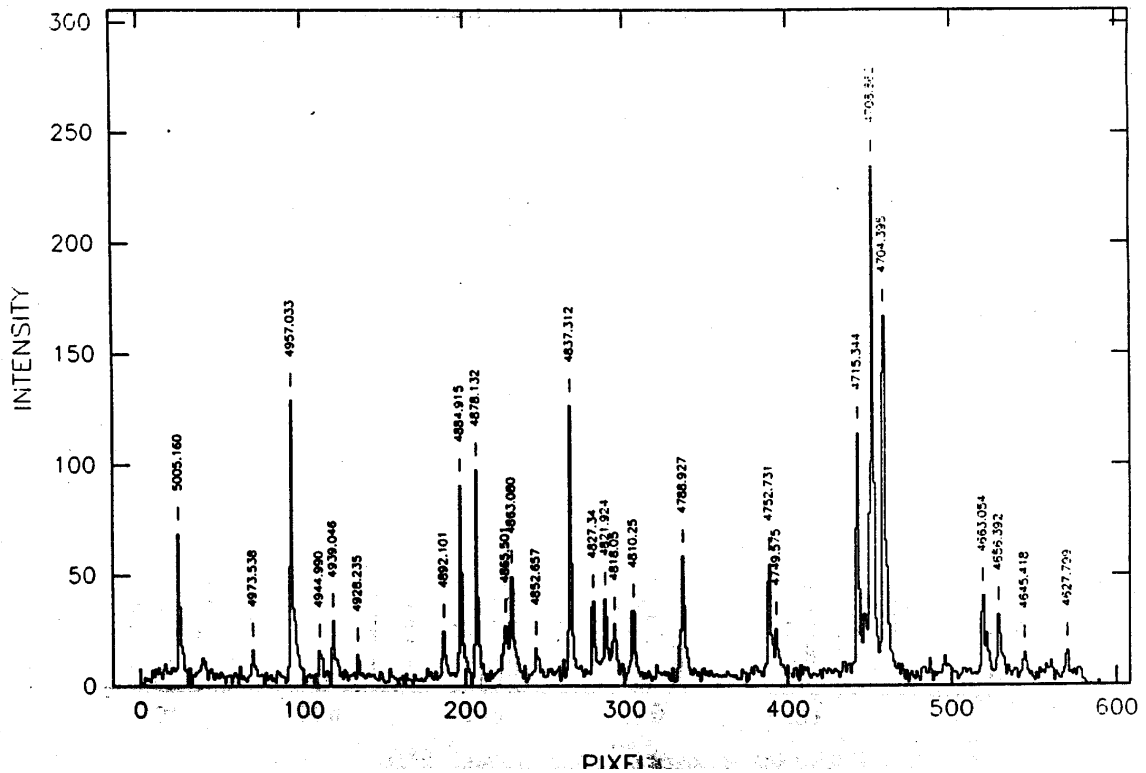
ARC ALK1 R632V 4200



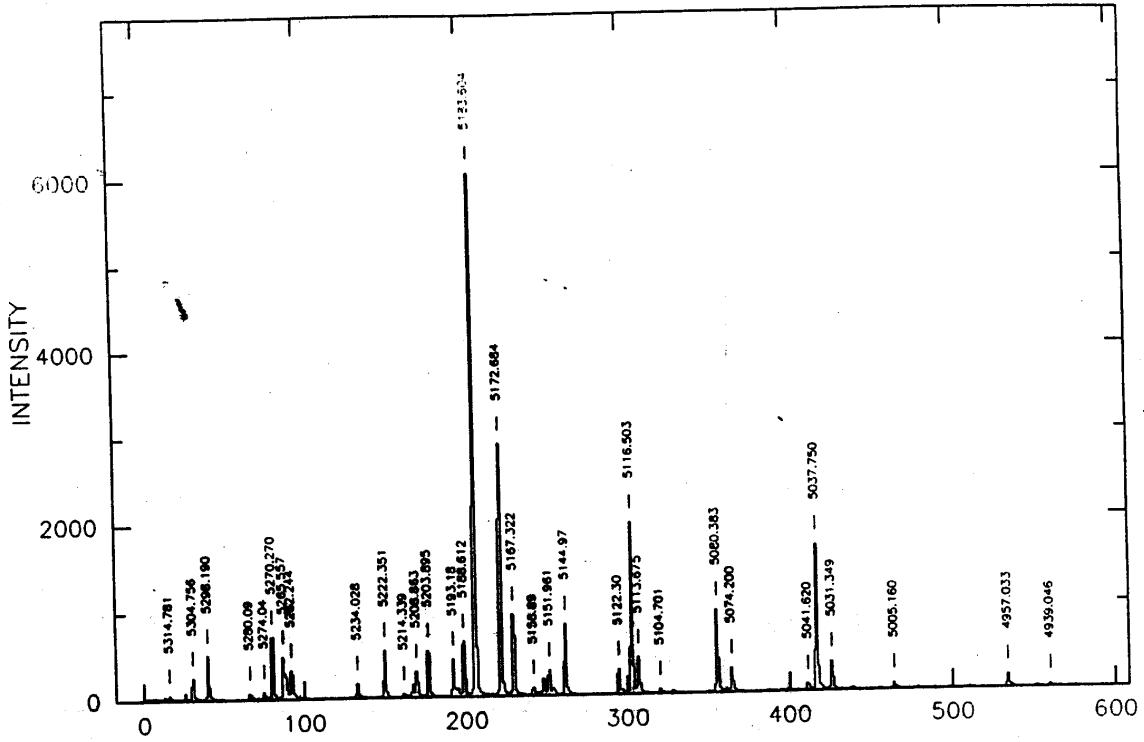
ARC ALK1 R632V 4500



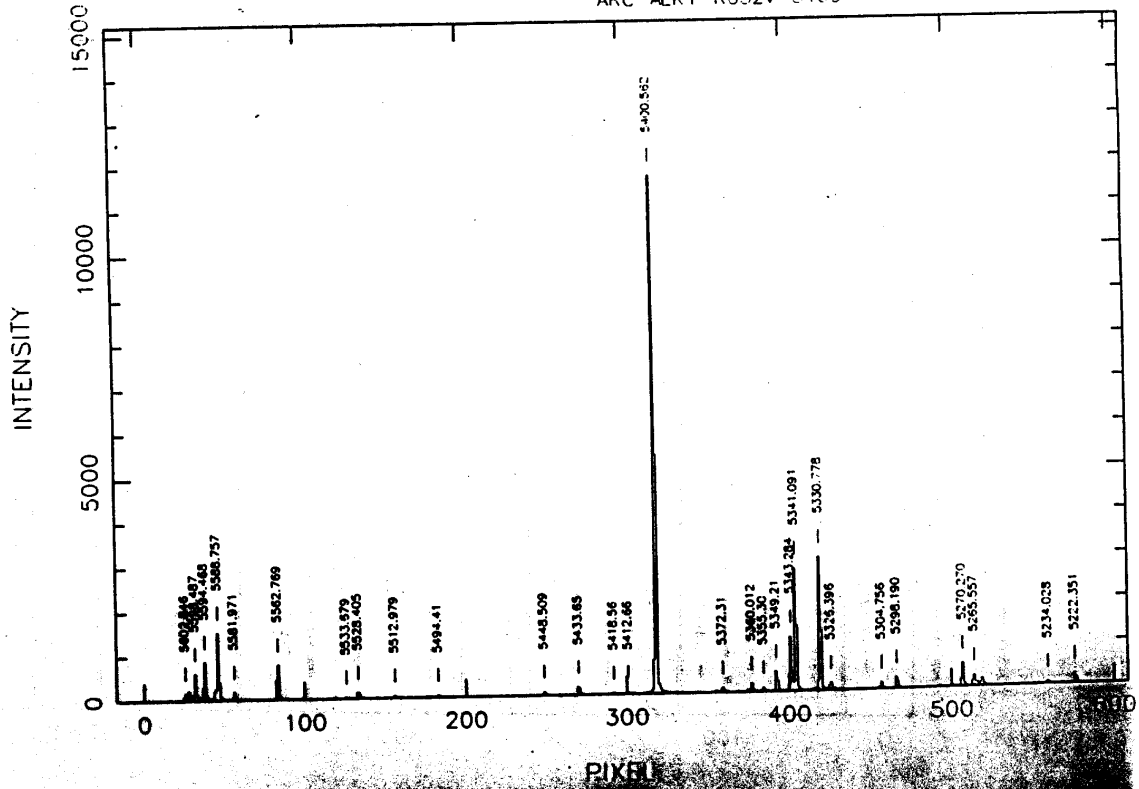
ARC ALK1 R632V 4800

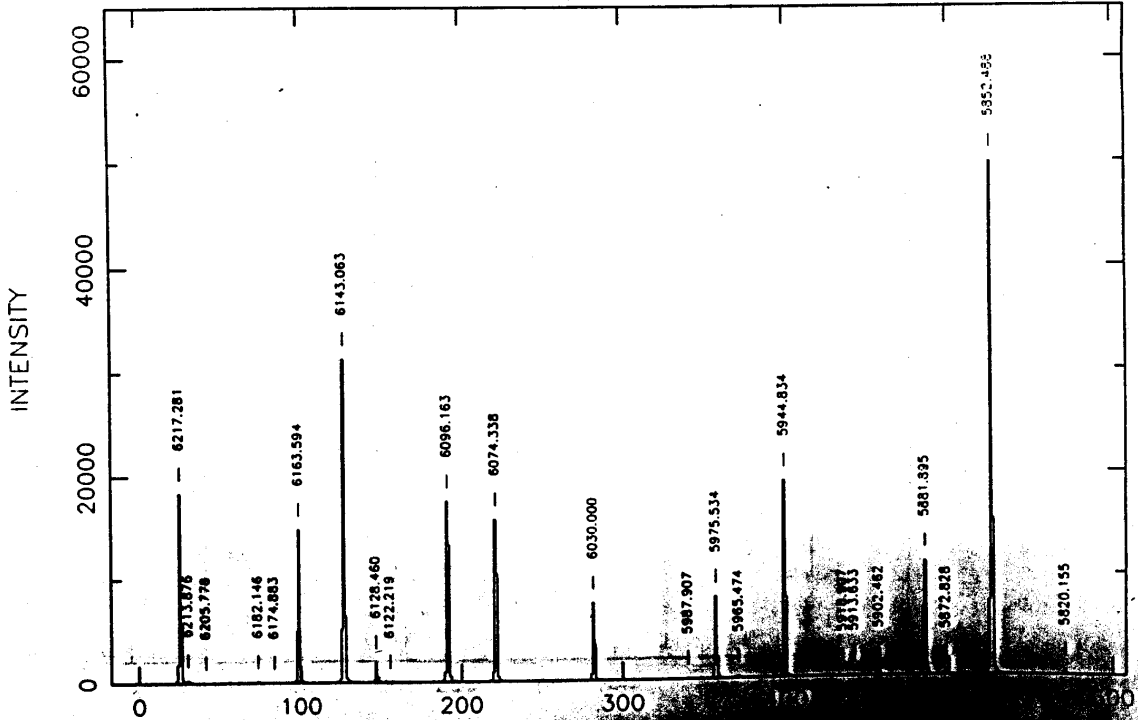
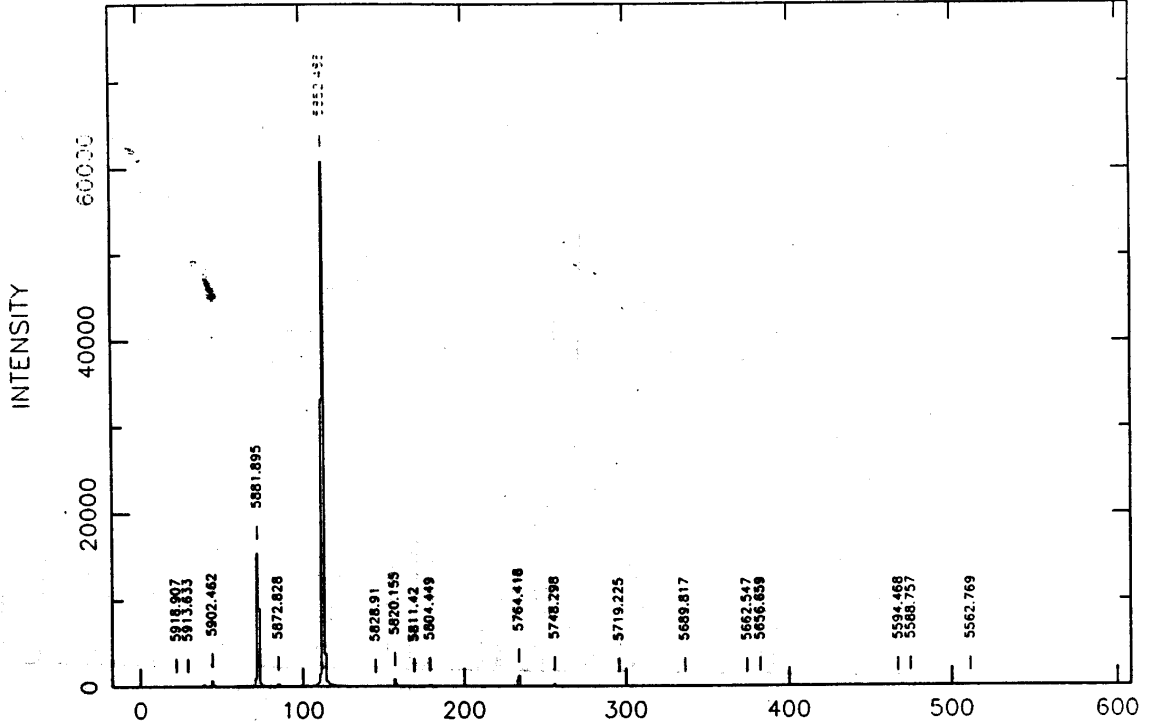


ARC ALK1 R632V 5100

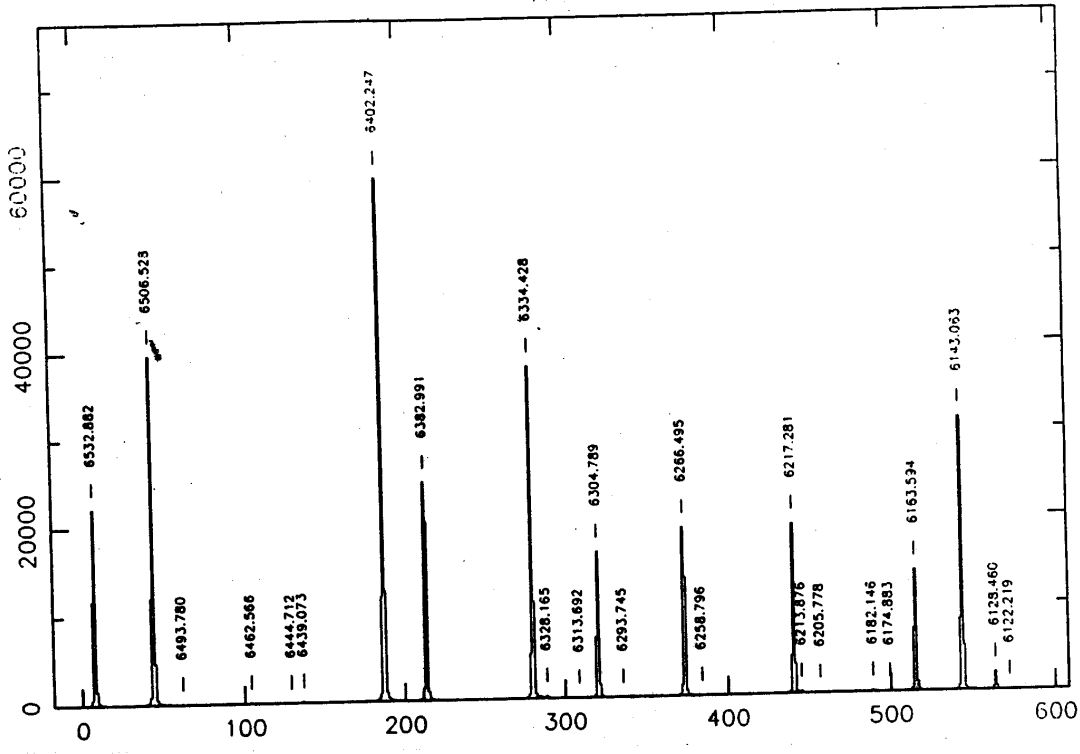


ARC ALK1 R632V 5400



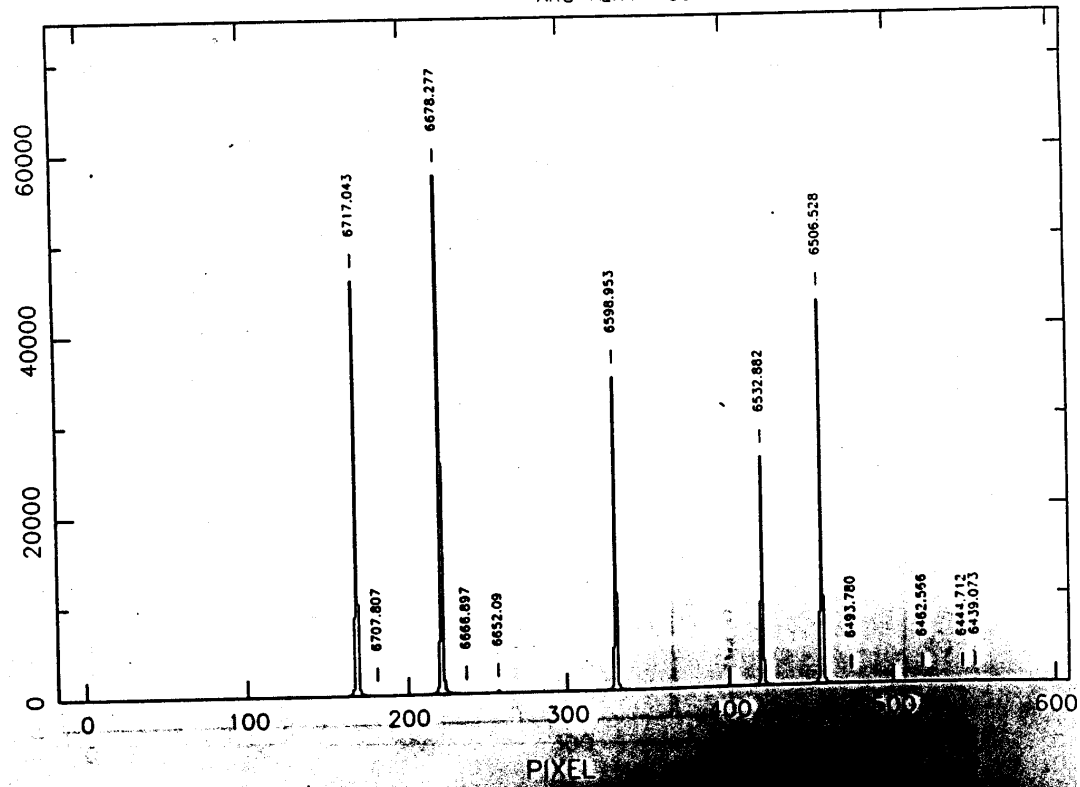


INTENSITY

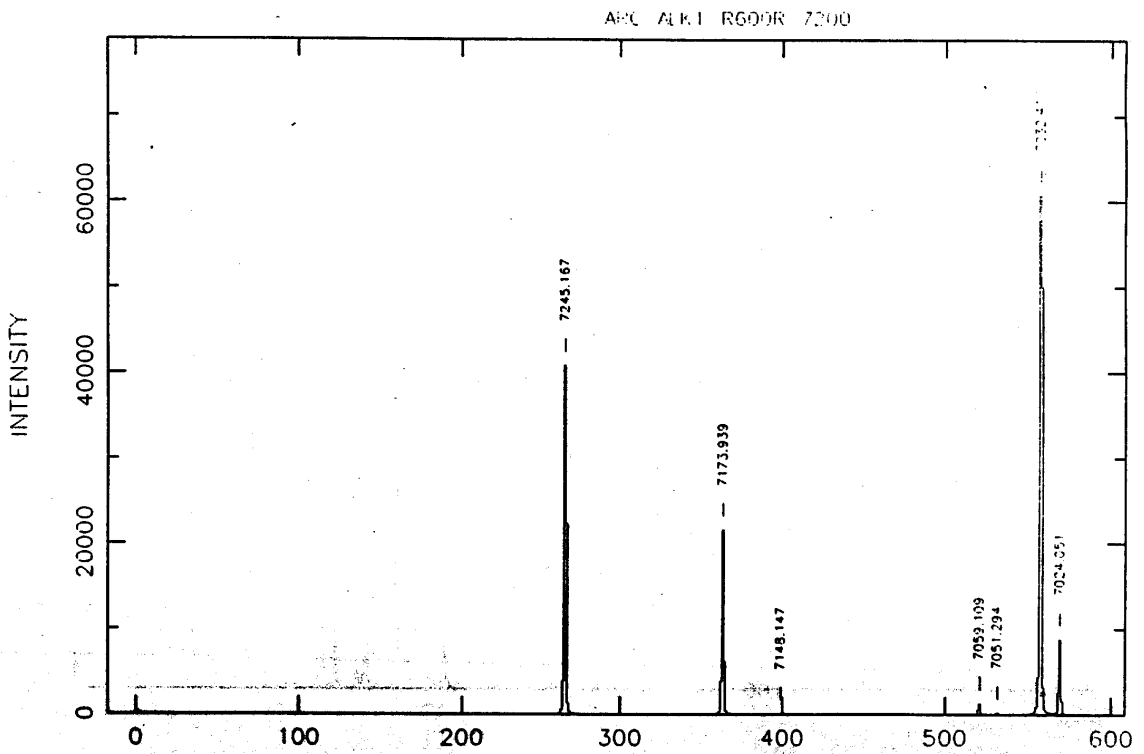
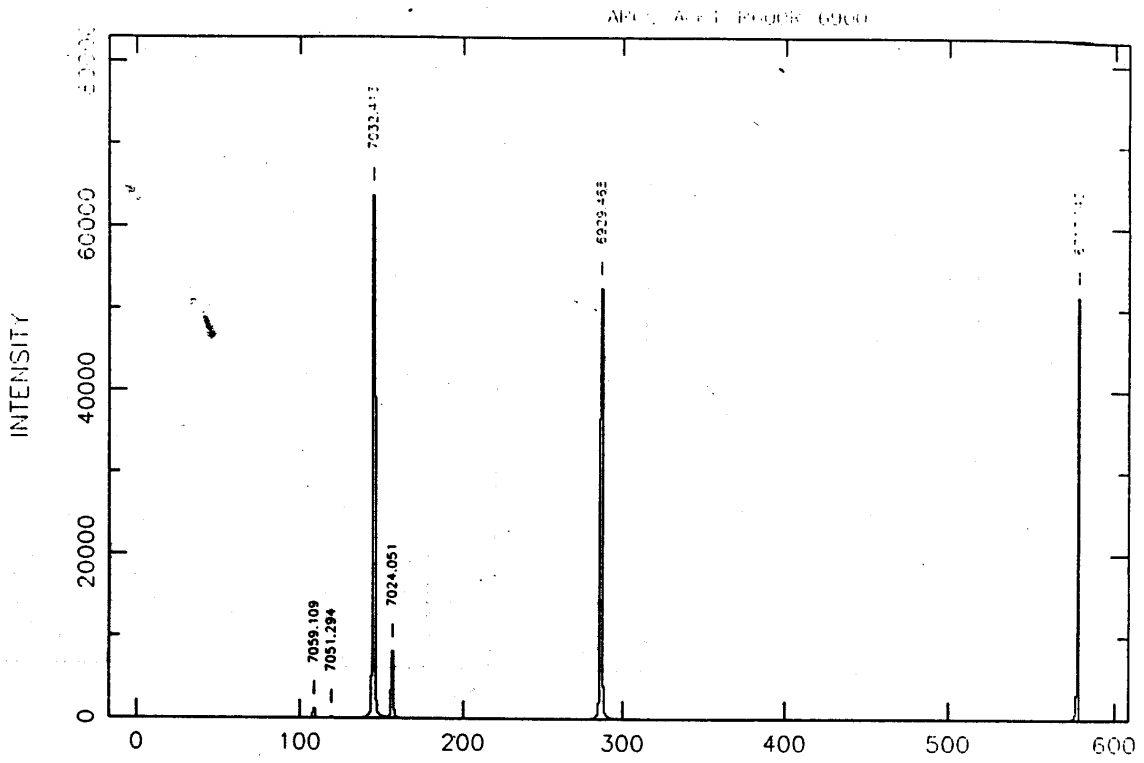


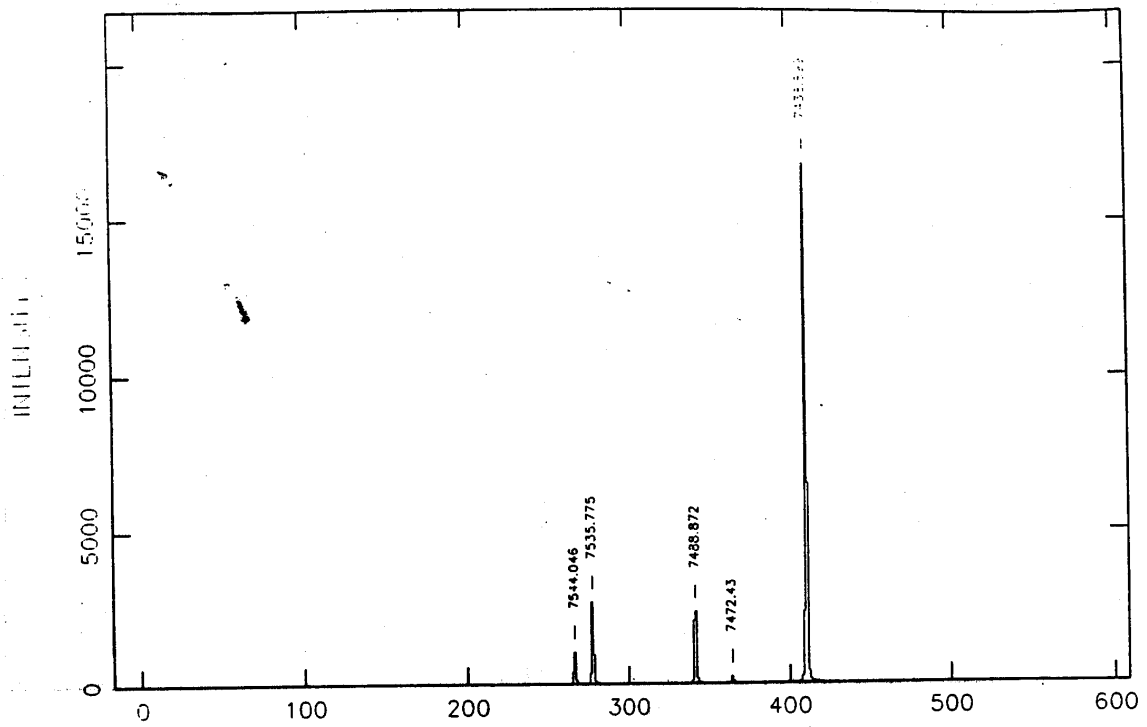
ARC ALK1 R600R 6600

INTENSITY



PIXEL





- ARC ALK1 R600R 7800

