

Table 4 : The Copper-Neon spectrum at high dispersion

Line	Symbol	Line	Symbol	Line	Symbol	Line	Sy
3247.540	CuI	4837.312	NeI	5782.13	CuI	8082.458	Ne
3273.962	CuI	4884.915	NeI	5804.449	NeI	8092.63	Cu
3279.82	CuI	4909.726	CuI	5811.42	NeI	8095.55	Cu
3323.75	NeII	4957.033	NeI	5820.155	NeI	8118.550	Ne
3334.87	NeII	5005.160	NeI	5828.91	NeI	8128.93	Ne
3337.84	CuI	5016.61	CuI	5852.488	NeI	8136.406	Ne
3369.87	NeI b	5031.3484	NeI	5881.895	NeI	8235.30	Cu
3378.28	NeI	5037.7505	NeI	5902.464	NeI	8248.70	Ne
3417.904	NeI	5074.200	NeI	5944.834	NeI	8259.380	Ne
3447.703	NeI	5080.383	NeI	5965.474	NeI	8266.076	Ne
3454.195	NeI	5105.541	CuI	5975.534	NeI w	8277.60	Cu
3466.579	NeI	5113.675	NeI	6029.997	NeI	8300.326	Ne
3472.571	NeI	5116.503	NeI	6074.338	NeI	8365.75	Ne
3501.217	NeI	5122.30	NeI b	6096.163	NeI	8377.607	Ne
3520.472	NeI	5144.97	NeI b	6128.451	NeI	8418.427	Ne
3530.39	CuI	5153.235	CuI	6143.063	NeI	8463.37	Ne
3568.53	NeI	5158.89	NeI	6163.594	NeI	8484.45	Ne
3593.56	NeI b	5188.612	NeI	6217.281	NeI	8495.36	Ne
3600.169	NeI	5193.18	NeI	6266.495	NeI	8503.46	Cu
3664.11	NeII	5203.895	NeI	6304.789	NeI	8544.70	Ne
3694.20	NeII	5208.863	NeI	6334.428	NeI	8571.360	Ne
3709.64	NeII	5218.202	CuI	6382.991	NeI	8582.91	Ne
3713.08	NeII	5222.351	NeI	6402.247	NeI	8591.259	Ne
3727.08	NeII	5234.028	NeI	6506.528	NeI	8634.648	Ne
3766.29	NeII	5274.04	NeI	6532.882	NeI	8647.05	Ne
3777.13	NeII	5280.09	NeI	6598.953	NeI	8654.383	Ne
3829.77	NeII	5292.52	CuI	6652.09	NeI	8679.491	Ne
4022.66	CuI	5298.190	NeI	6678.277	NeI	8681.920	Ne
4062.84	CuI w	5304.756	NeI	6717.043	NeI	8704.15	Ne
4174.37	NeI	5326.396	NeI	6929.468	NeI	8771.70	Ne
4219.76	NeII	5330.778	NeI	7024.051	NeI	8780.622	Ne
4231.60	NeII	5341.091	NeI	7032.413	NeI	8783.755	Ne
4275.11	NeI b	5343.284	NeI	7059.109	NeI	8853.867	Ne
4290.40	NeII	5349.21	NeI	7173.939	NeI	8865.67	Ne
4379.50	NeII	5352.67	CuI	7245.167	NeI	8919.50	Ne
4391.94	NeII	5355.30	NeI b	7438.899	NeI	8988.58	Ne
4397.94	NeII	5360.012	NeI	7472.43	NeI	9148.68	Ne
4409.30	NeII	5372.31	NeI	7488.872	NeI	9201.76	Ne
4413.20	NeII	5374.975	NeI	7535.775	NeI	9220.05	Ne
4428.54	NeII	5400.562	NeI	7544.046	NeI	9221.59	Ne
4430.90	NeII	5412.66	NeI	7562.01	CuII	9226.67	Ne
4480.36	CuI	5418.56	NeI	7579.02	CuII	9275.53	Ne
4509.39	CuI	5433.65	NeI	7652.36	CuII	9300.85	Ne
4530.82	CuI	5494.41	NeI	7724.63	NeI	9310.58	Ne
4537.704	NeI b	5562.769	NeI w	7726.64	CuII	9313.98	Ne
4651.130	CuI	5652.57	NeI	7825.66	CuII	9326.52	Ne
4656.3923	NeI	5656.659	NeI	7839.08	NeI	9373.28	Ne
4704.395	NeI	5662.547	NeI	7895.83	CuII	9425.38	Ne
4715.344	NeI	5689.817	NeI	7902.57	CuII	9459.21	Ne
4724.48	NeI b	5700.24	CuI	7927.11	NeI	9486.680	Ne
4752.7313	NeI	5719.225	NeI	7933.13	CuI	9534.17	Ne
4818.40	NeI b	5748.298	NeI	7937.01	NeI	9547.40	Ne
4821.924	NeI	5760.59	NeI	7943.180	NeI	9665.424	Ne
4827.34	NeI w	5764.418	NeI	7972.01	CuII		

Notes to Table 4

Line	
3369.87	NeI, blend of 3369.908 (7) and 3369.809 (5)
3593.56	NeI, blend of 3593.526 (2) and 3593.640 (1)
3600.169	NeI, possibly contaminated with CuI 3599.13
4062.84	CuI, blend of 4062.70 (2.0) and 4063.29 (.6)
4275.11	NeI, blend of 4275.56 (7) and 4274.66 (5)
4537.704	NeI, blend of 4537.751 (1.0) and 4537.683 (0.3)
4704.395	NeI, blended with 4704.60 CuI
4724.48	NeI, blend of 4725.25 (1) and 4723.84 (1)
4818.40	NeI, blend of 4818.79 (1) and 4817.64 (2)
4827.34	weak NeI at 4827.56
5122.30	NeI, blend of 5122.26 (1) and 5122.34 (1)
5144.97	NeI, blend of 5144.94 (1) and 5145.01 (1)
5193.18	NeI, blend of 5193.13 (1) and 5193.22 (1)
5355.30	NeI, blend of 5355.18 (1) and 5355.42 (1)
5562.769	weak NeI at 5562.44
5975.534	weak NeI at 5974.63
8266.076	weak NeI at 8267.11
8377.607	weak NeI at 8376.41
8865.67	NeI, blend of 8865.759 (4) and 8865.33

Figure 4: The Copper-Neon spectrum at high dispersion

Notes to figure 4

Spectrum	CuNe from 3200 to 9600 Angstrom at high dispersion	
Camera	IDS 235 mm	
Detector	GEC 4 "GEC BLUE" ; pixel size : 22 mu	
Gratings	R1200B for the region 3200 A - 4600 A R1200Y for the region 4600 A - 9600 A	
Collimator	Al UV	
Dispersion	34 A/m or 1.34 pixel/A	
Exposure times	3200 - 5200 Angstrom	600 s
	5400 & 5600	300 s
	5800	15 s
	6000	10 s
	6200 & 6400	20 s
	6600 - 7400	30 s
	7600	20 s
	7800 & 8000	60 s
	8200 - 8600	20 s
	8800	30 s
	9000	120 s
	9200	300 s
	9400 & 9600	600 s

Table 5: The Copper Neon spectrum at low dispersion

Line	Symbol	Line	Symbol	Line	Symbol	Line	Symb
3247.540	CuI	5330.778	NeI	6382.991	NeI	8300.326	NeI
3273.962	CuI	5341.091	NeI	6402.247	NeI	8377.607	NeI
3447.703	NeI	5400.5619	NeI	6506.528	NeI	8418.427	NeI
3520.472	NeI	5748.299	NeI	6532.882	NeI	8495.360	NeI
3713.08	NeII	5764.418	NeI	6598.953	NeI	8591.258	NeI
3777.13	NeII	5852.4878	NeI	6678.277	NeI	8634.648	NeI
4022.66	NeI	5881.8950	NeI	6717.043	NeI	8654.383	NeI
4275.11	NeI b	5944.834	NeI	6929.468	NeI	8853.866	NeI
4530.82	CuI	5975.534	NeI w	7032.413	NeI	8865.670	NeI b
4651.13	CuI	6030.000	NeI	7173.939	NeI	8919.500	NeI
4704.395	NeI w	6074.338	NeI	7245.167	NeI	9148.680	NeI
4884.915	NeI	6096.163	NeI	7438.899	NeI	9300.850	NeI
5037.7505	NeI	6143.063	NeI	7488.872	NeI	9326.520	NeI
5080.383	NeI	6163.594	NeI	7535.775	NeI	9425.380	NeI
5105.541	CuI	6217.281	NeI	7943.180	NeI	9665.424	NeI
5116.503	NeI	6266.495	NeI	8082.458	NeI		
5153.235	CuI	6304.789	NeI	8136.406	NeI		
5218.202	CuI	6334.428	NeI	8266.08	NeI b		

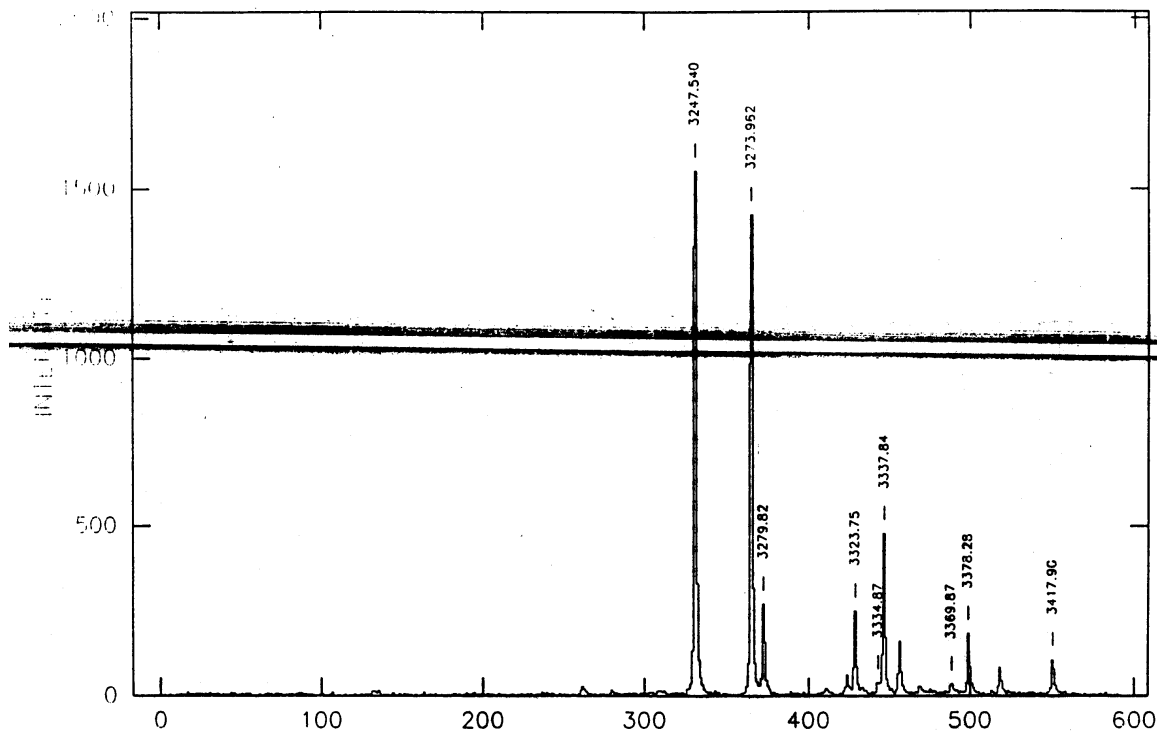
Notes to Table 5

Line	
4275.11	NeI, blend of 4274.66 and 4275.56
4704.395	NeI, weak CuI at 4704.60
5975.534	NeI, weak NeI at 5974.63
8266.08	NeI, blend at 8259.38
8865.67	NeI, blend of 8865.33 and 8865.76

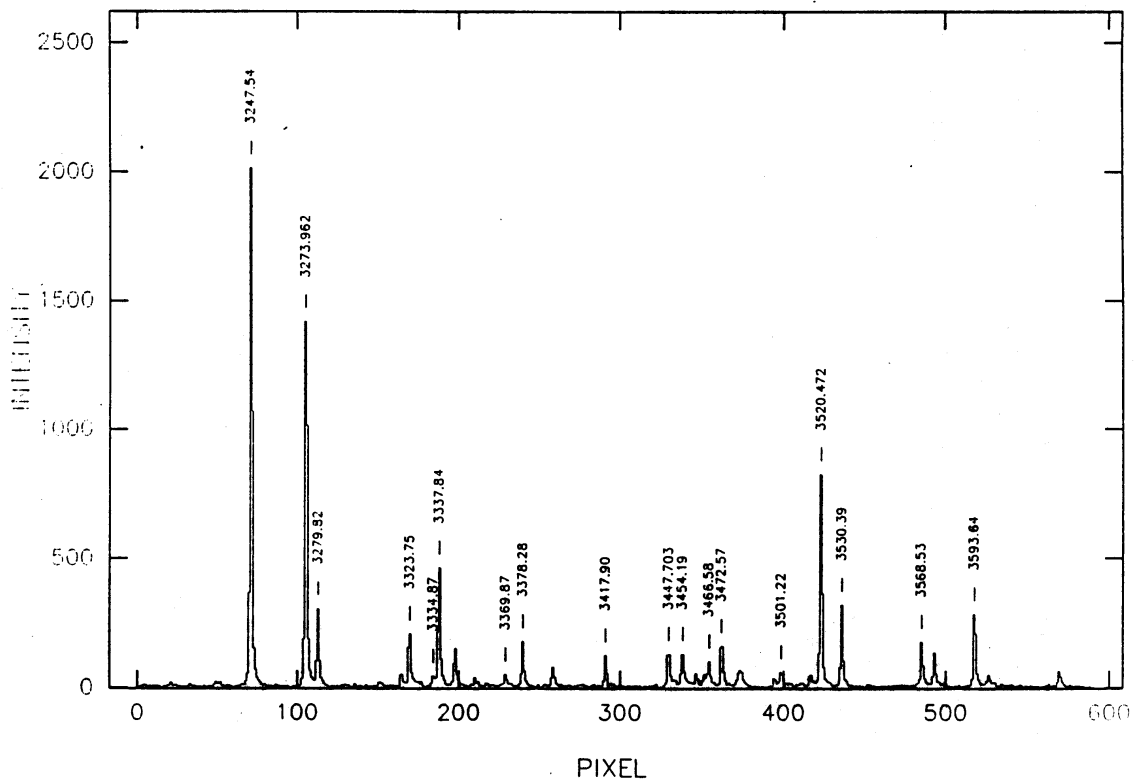
Figure 5 : Copper-Neon spectrum at low dispersion**Notes to figure 5**

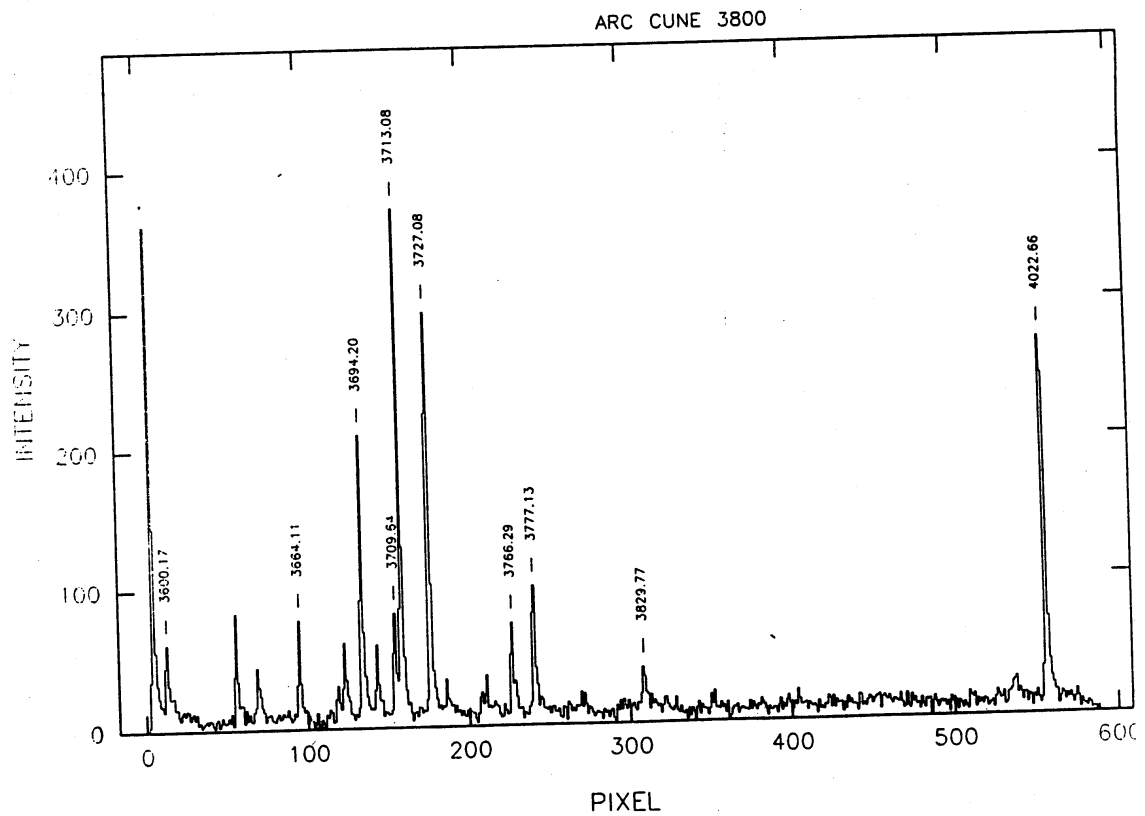
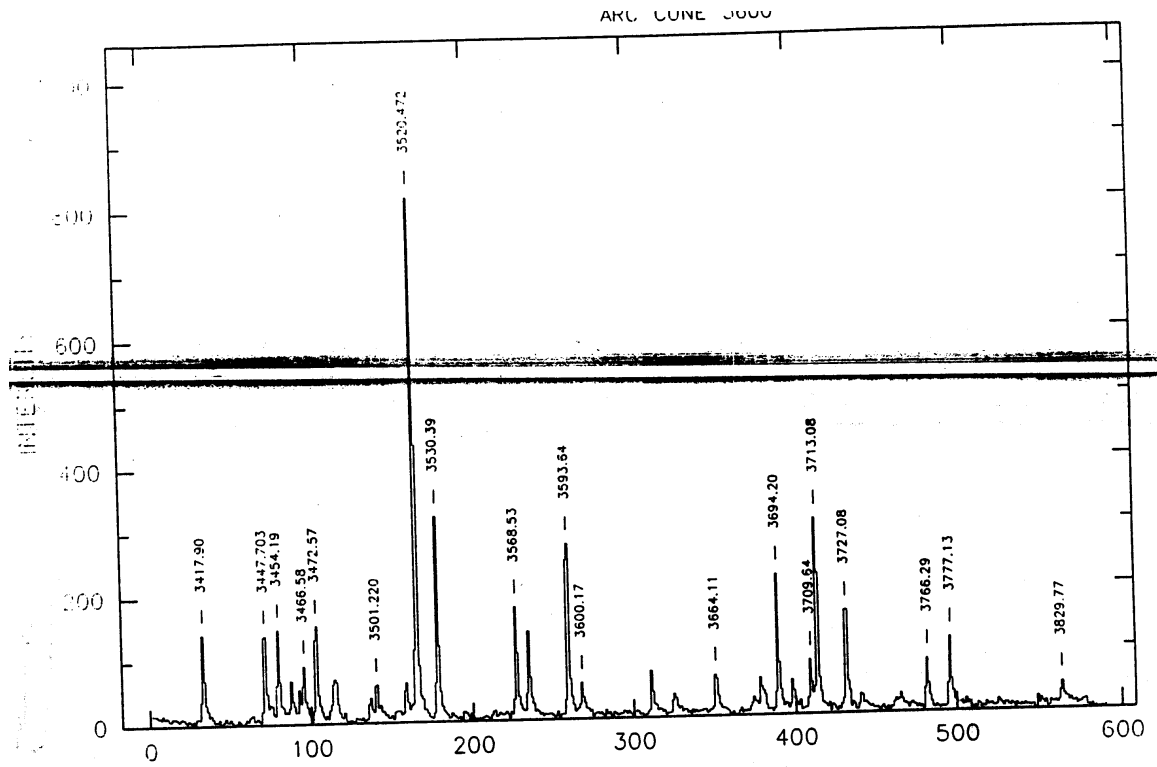
Spectrum	CuNe at low dispersion	
Camera	IDS 500 mm	
Detector	GEC 4 "GEC BLUE" ; 22 mu pixel	
Gratings	R150V	
Collimator	Al UV	
Dispersion	131 A/mm or 0.347 pixel/A	
Exposure times	4500	600 s
	5500	10 s
	6500	5 s
	7500	5 s
	8500	120 s
	9500	300 s

ARC CUNE 3200

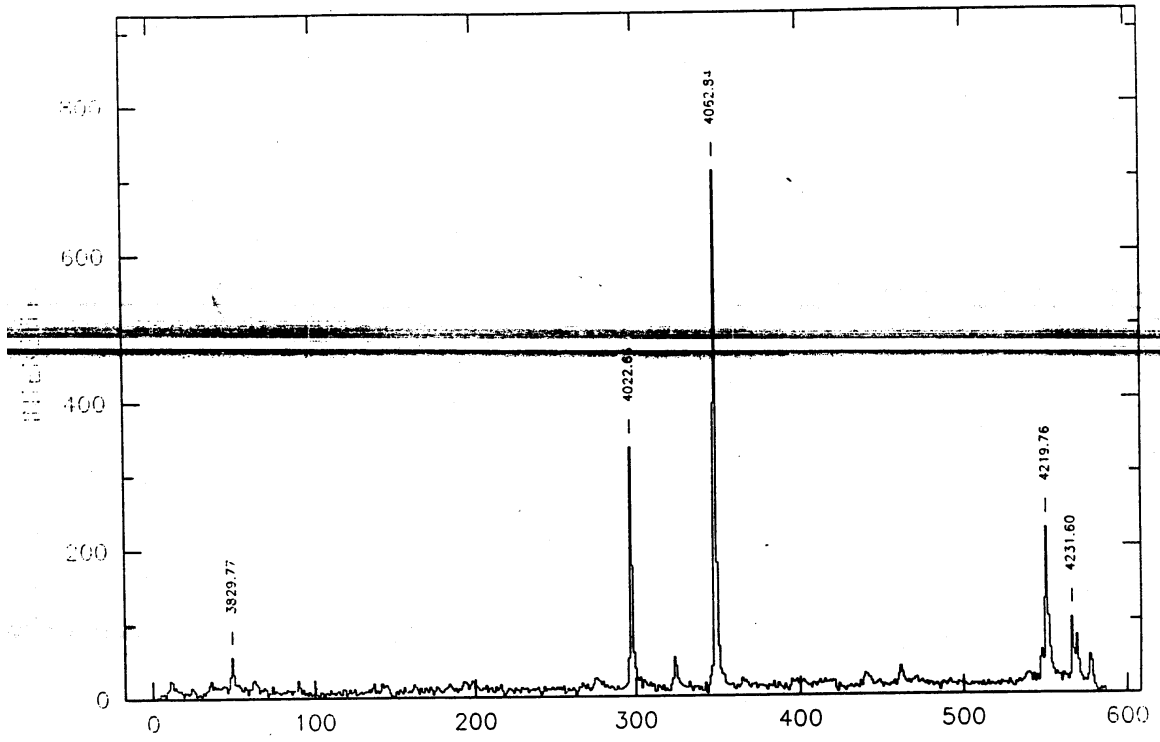


ARC CUNE 3400

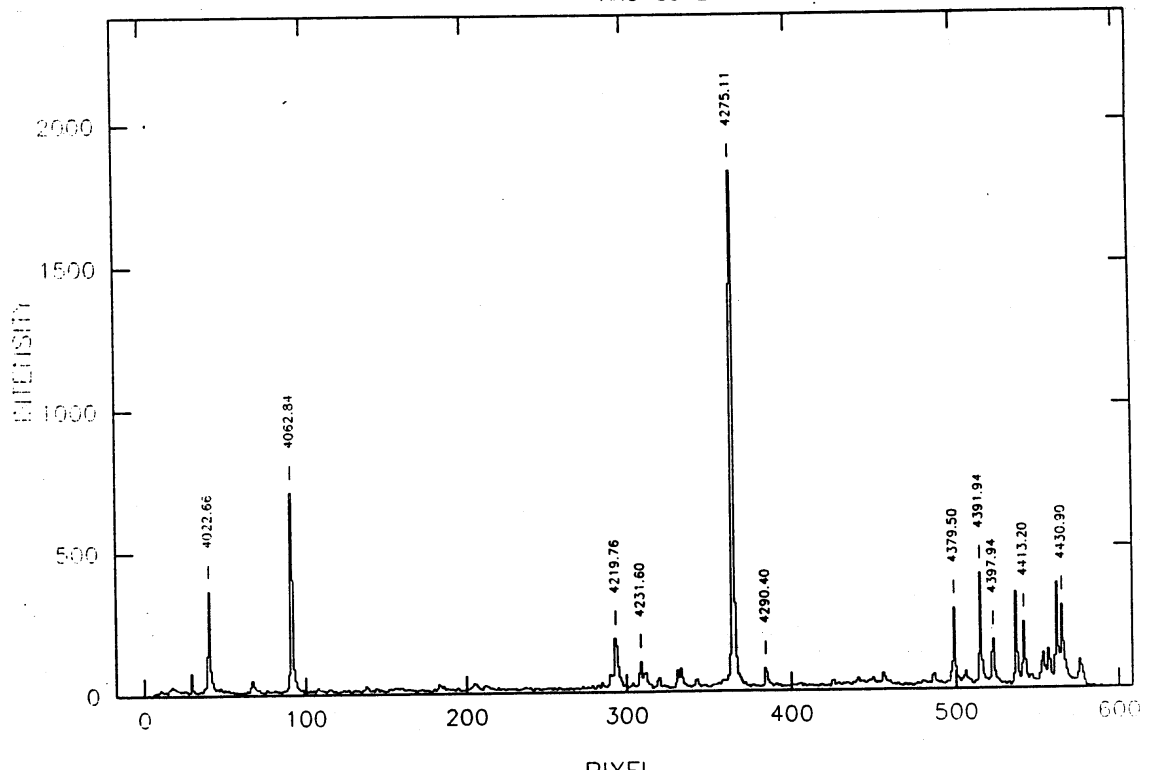




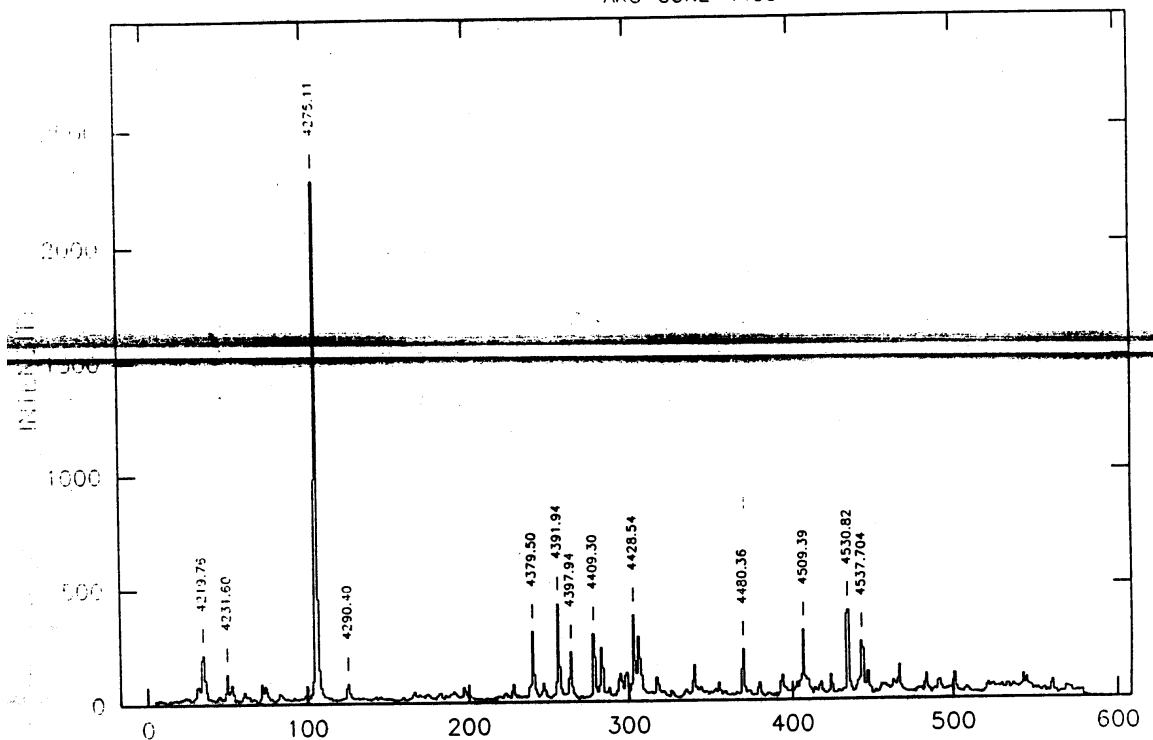
ARC CUNE 4000



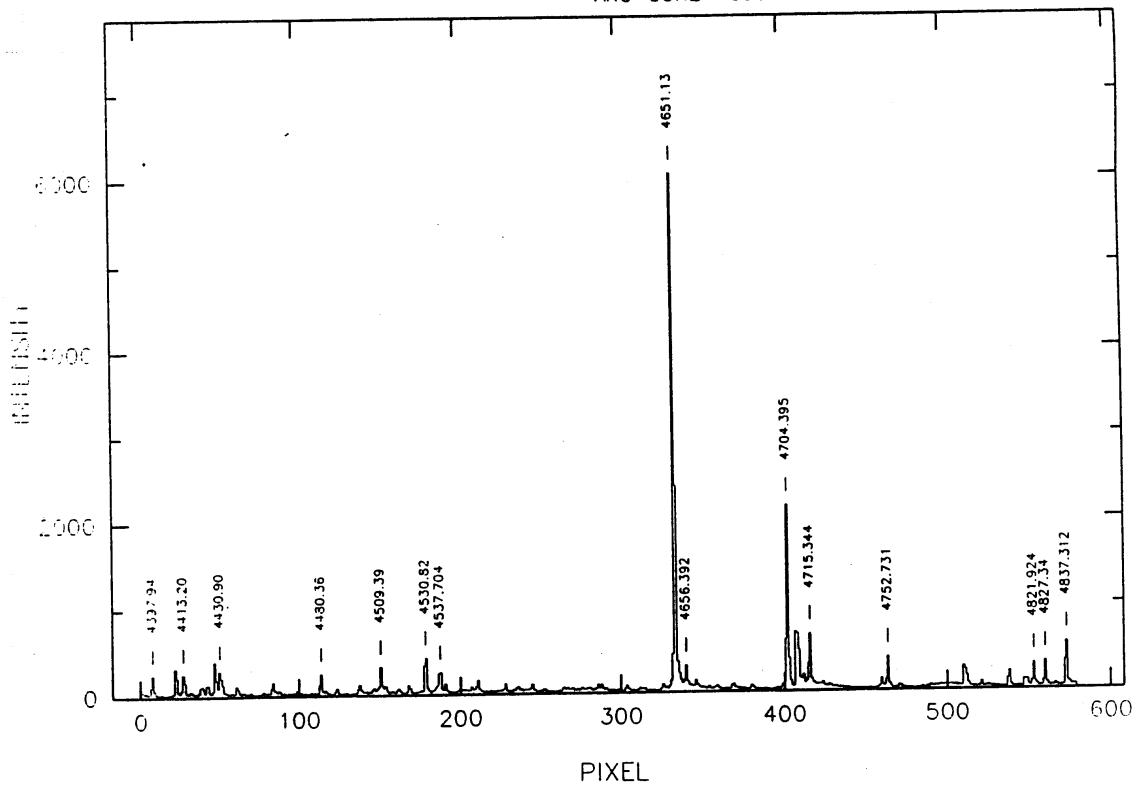
ARC CUNE 4200



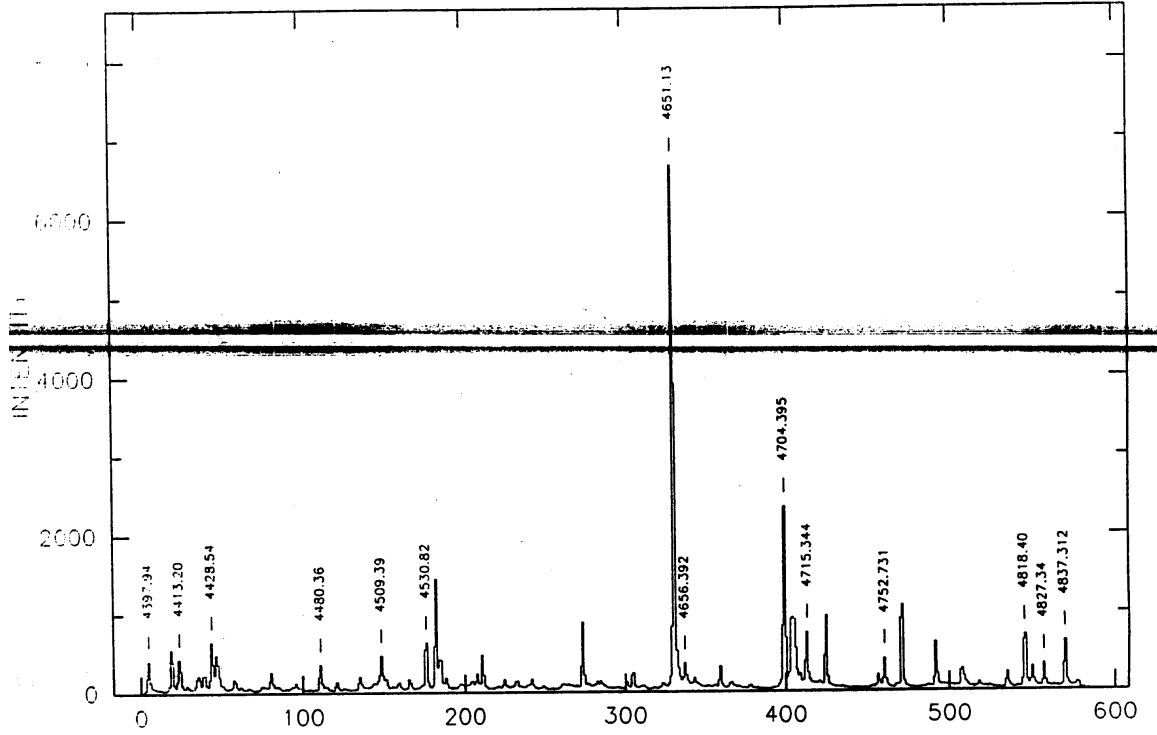
ARC CUNE 4400



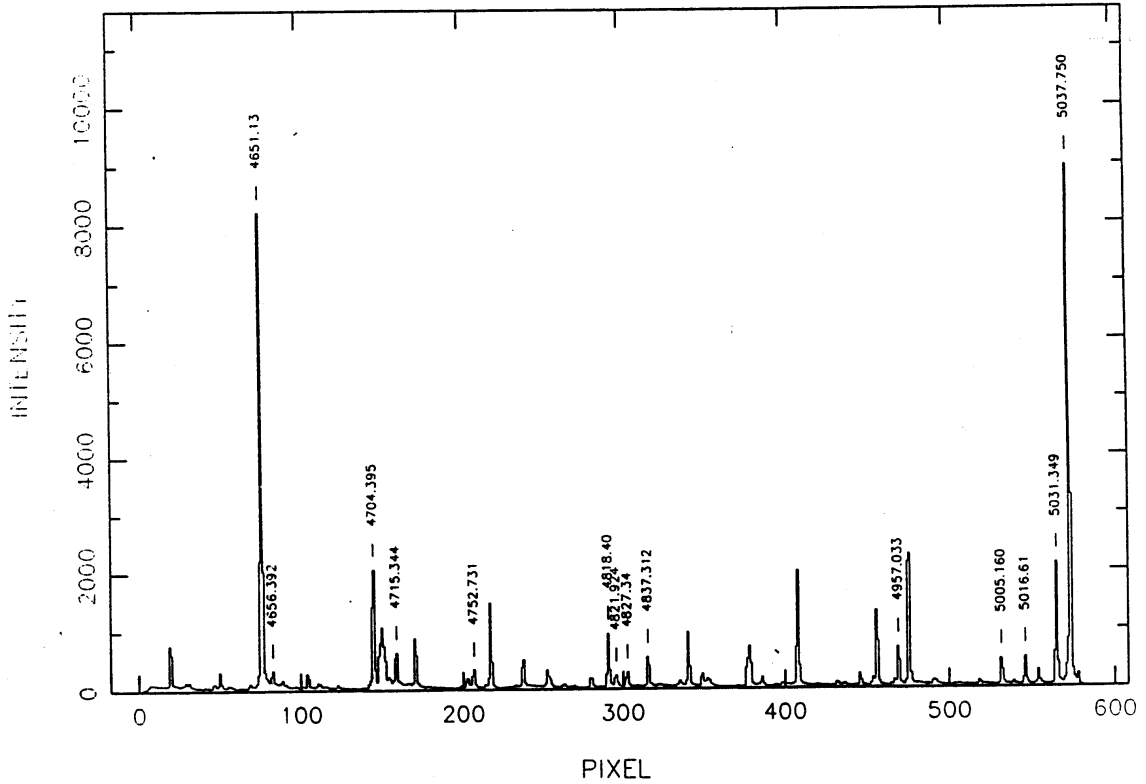
ARC CUNE 4600 R1200B

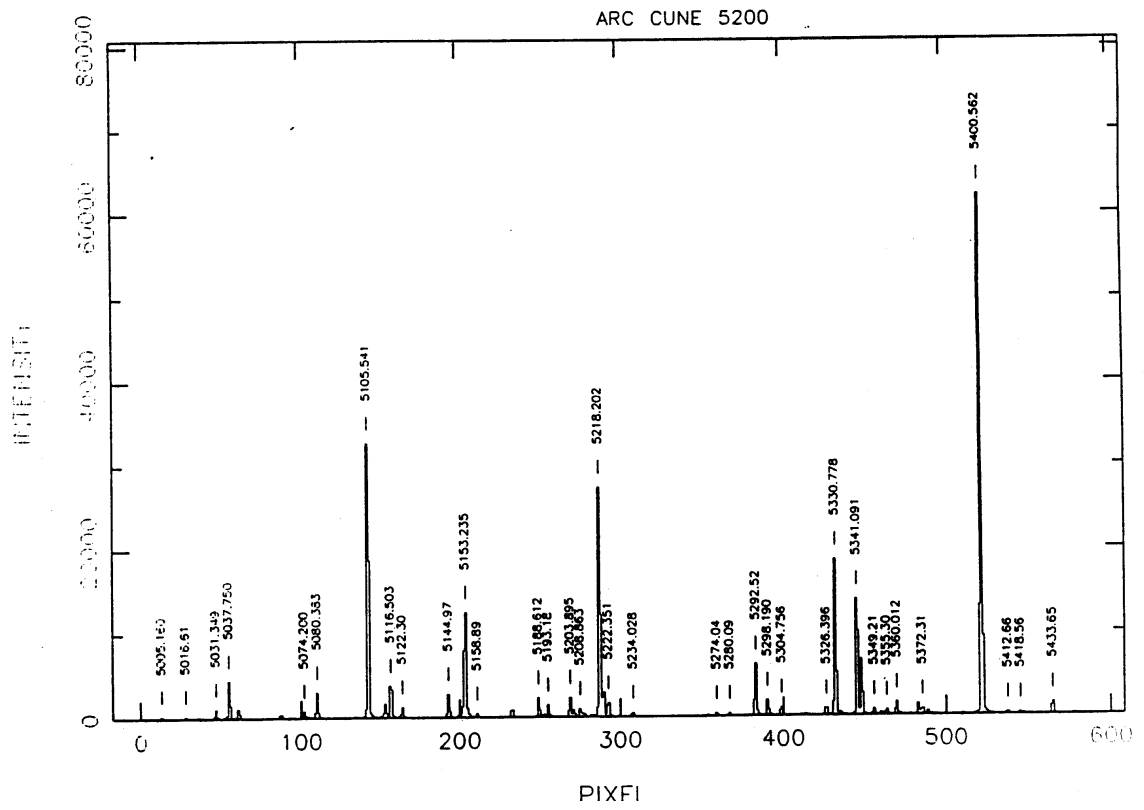
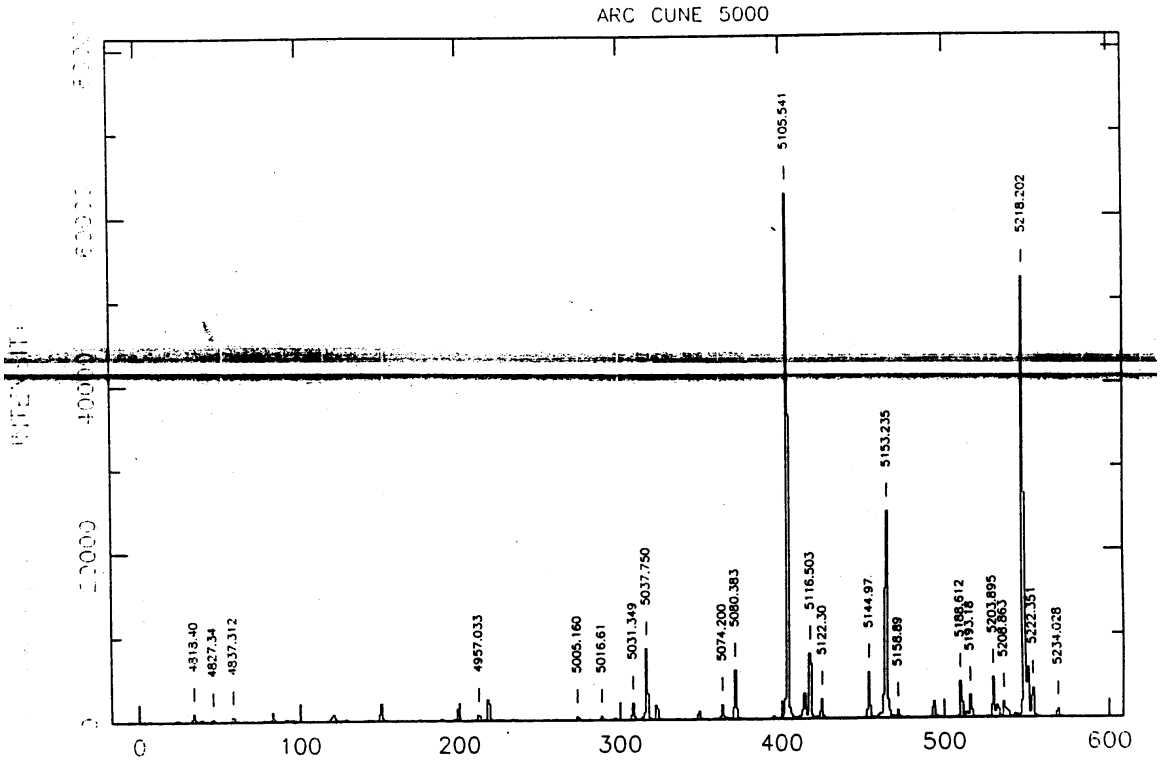


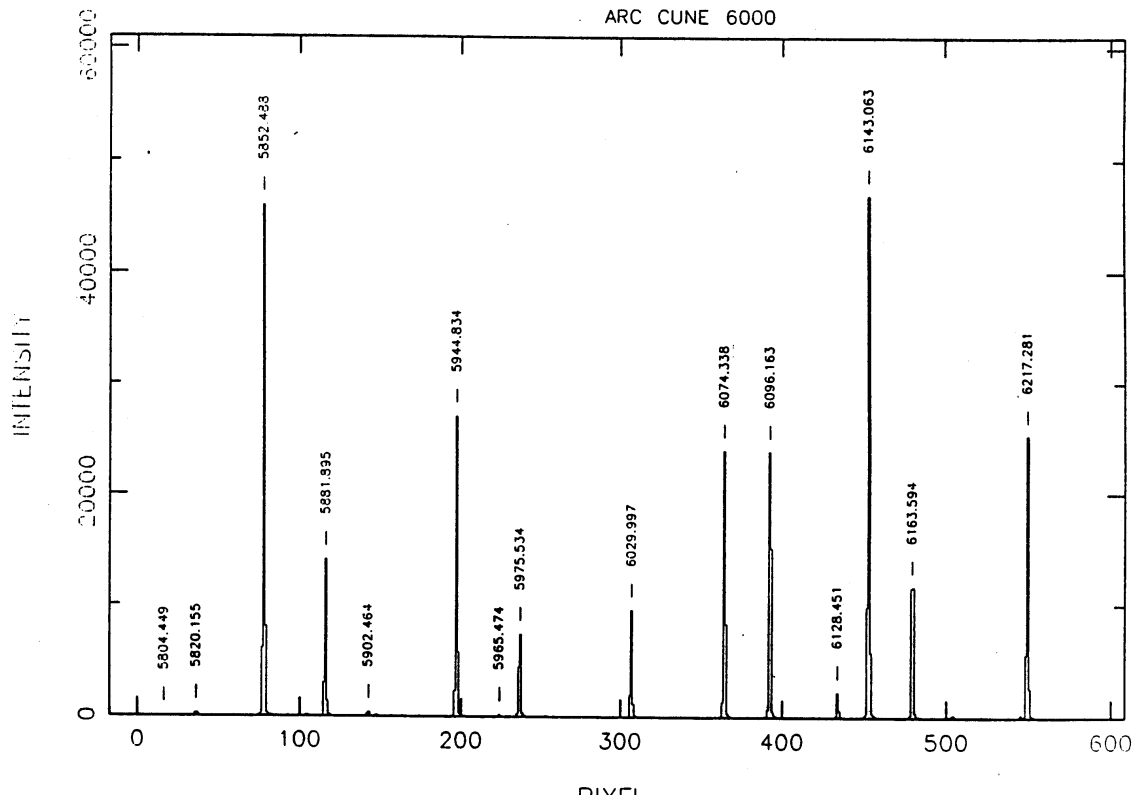
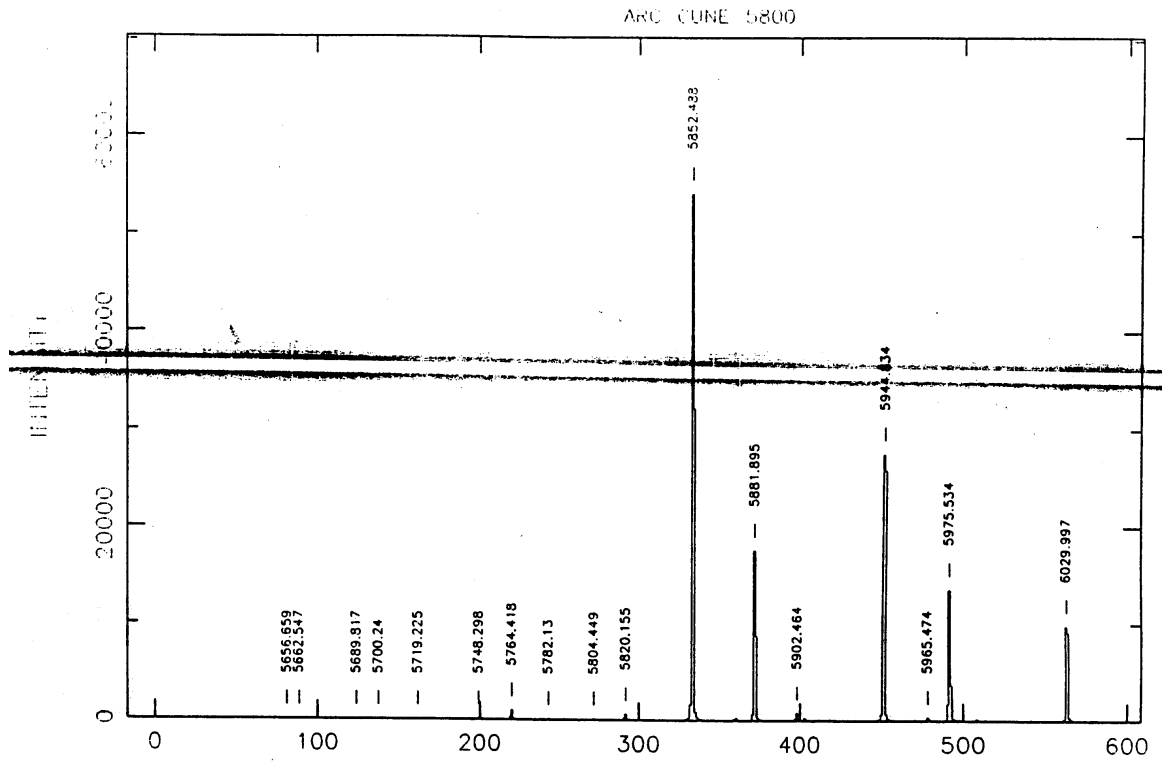
ARC CUNE 4600

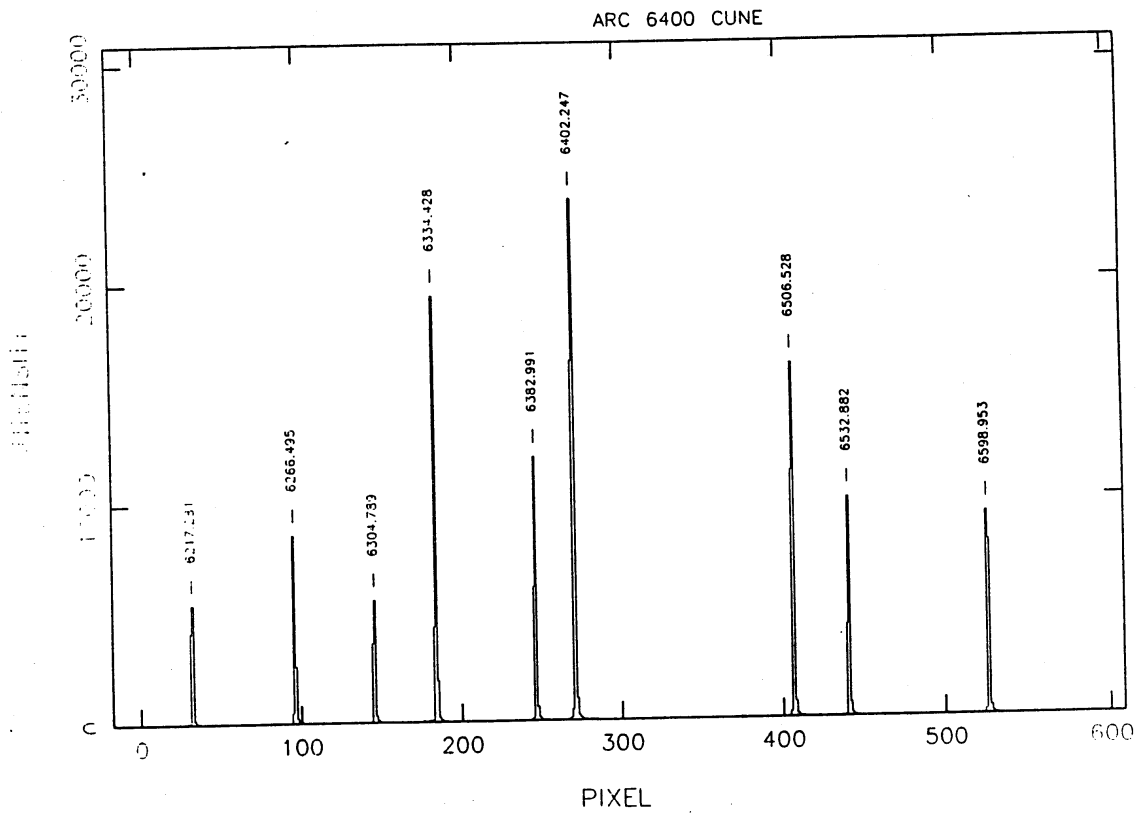
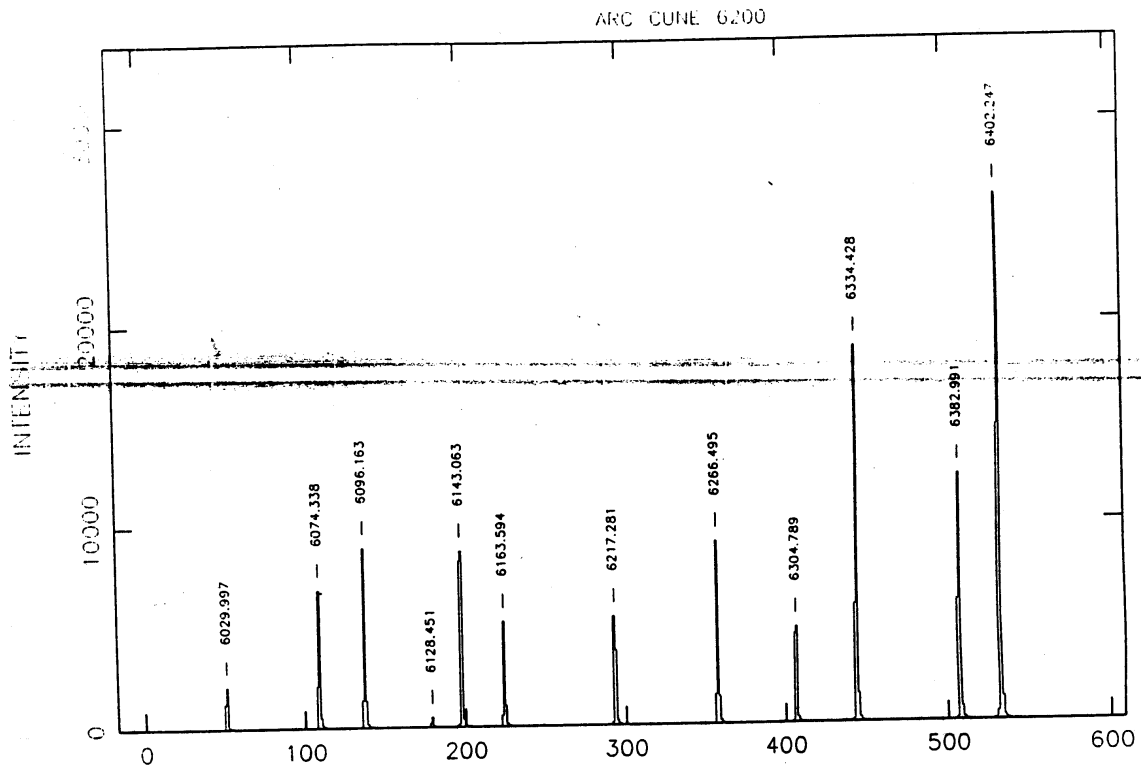


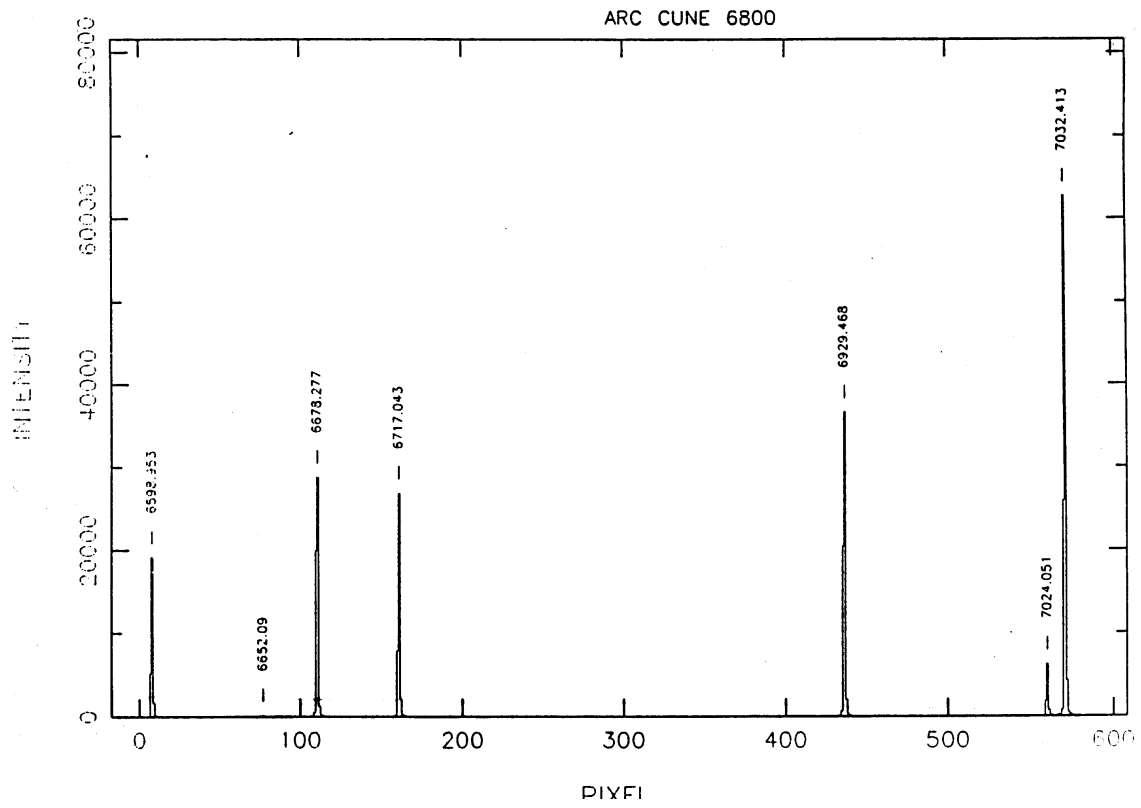
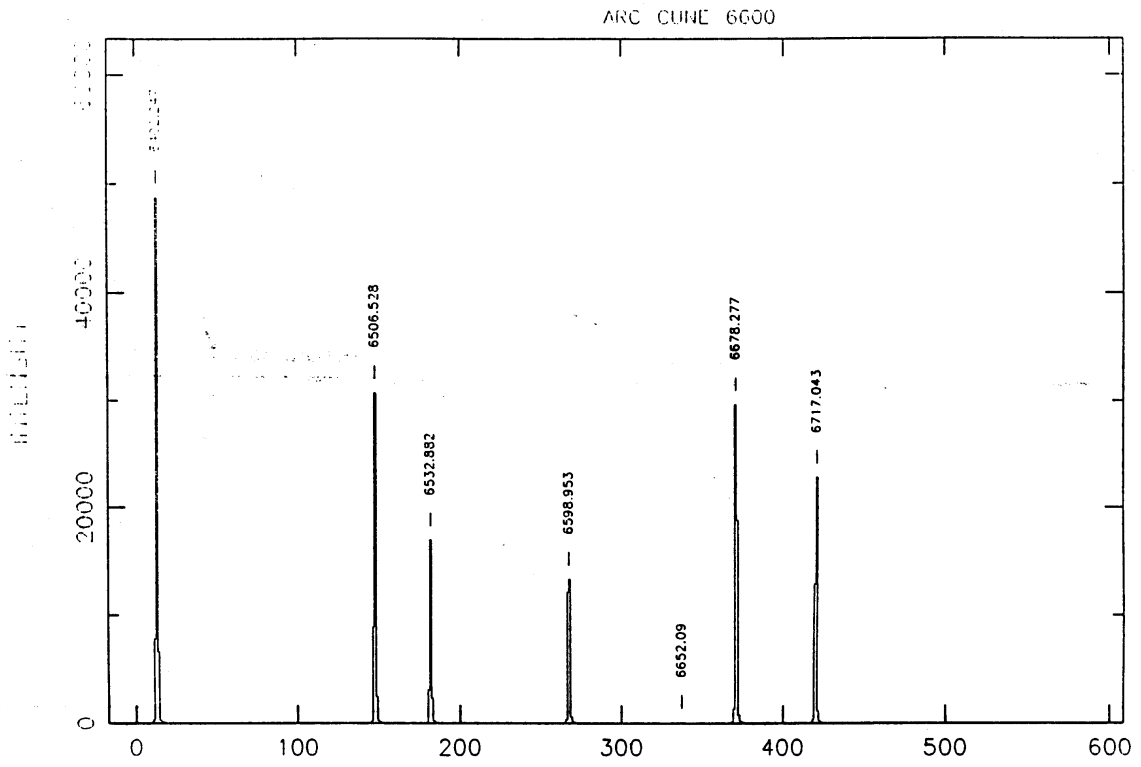
ARC CUNE 4800

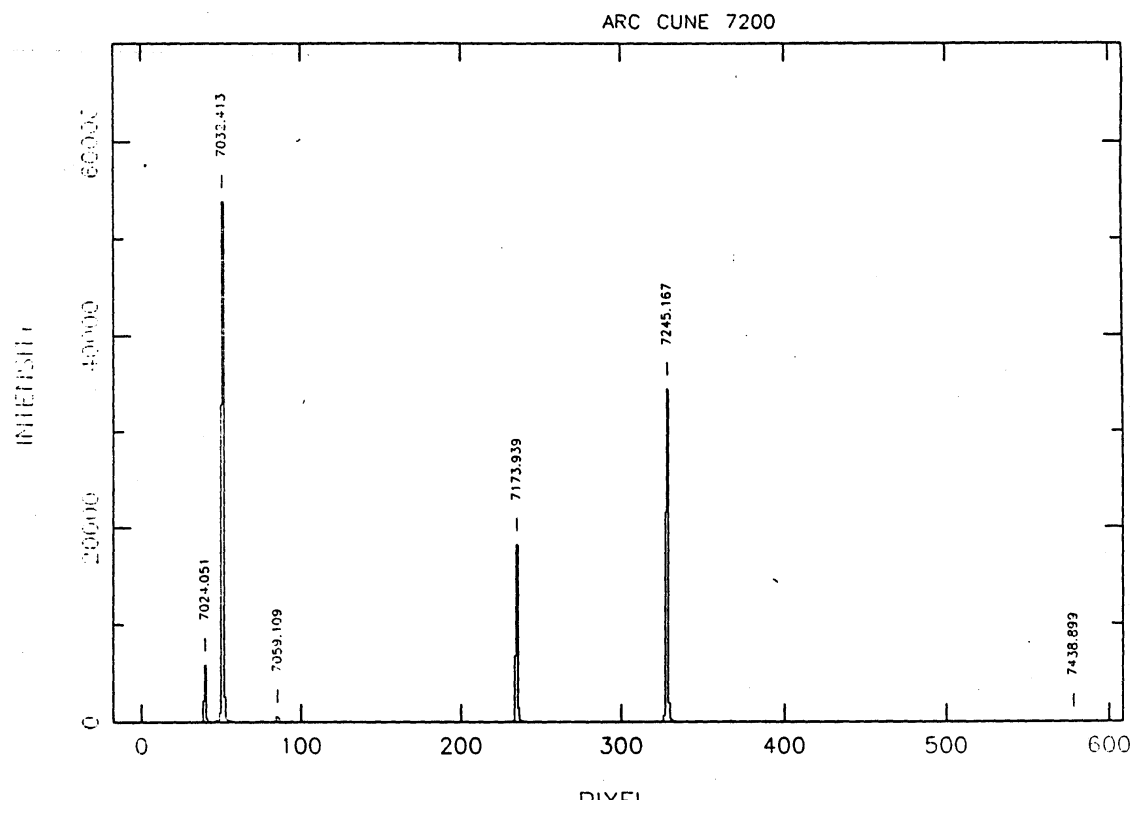
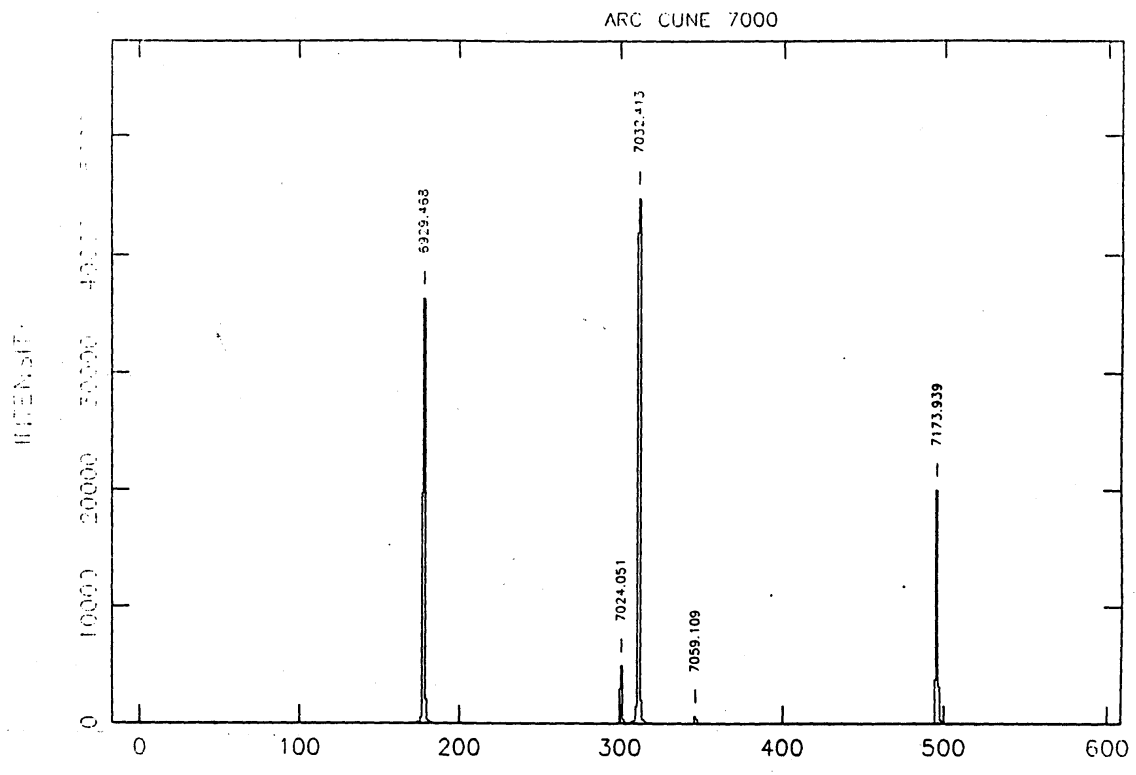


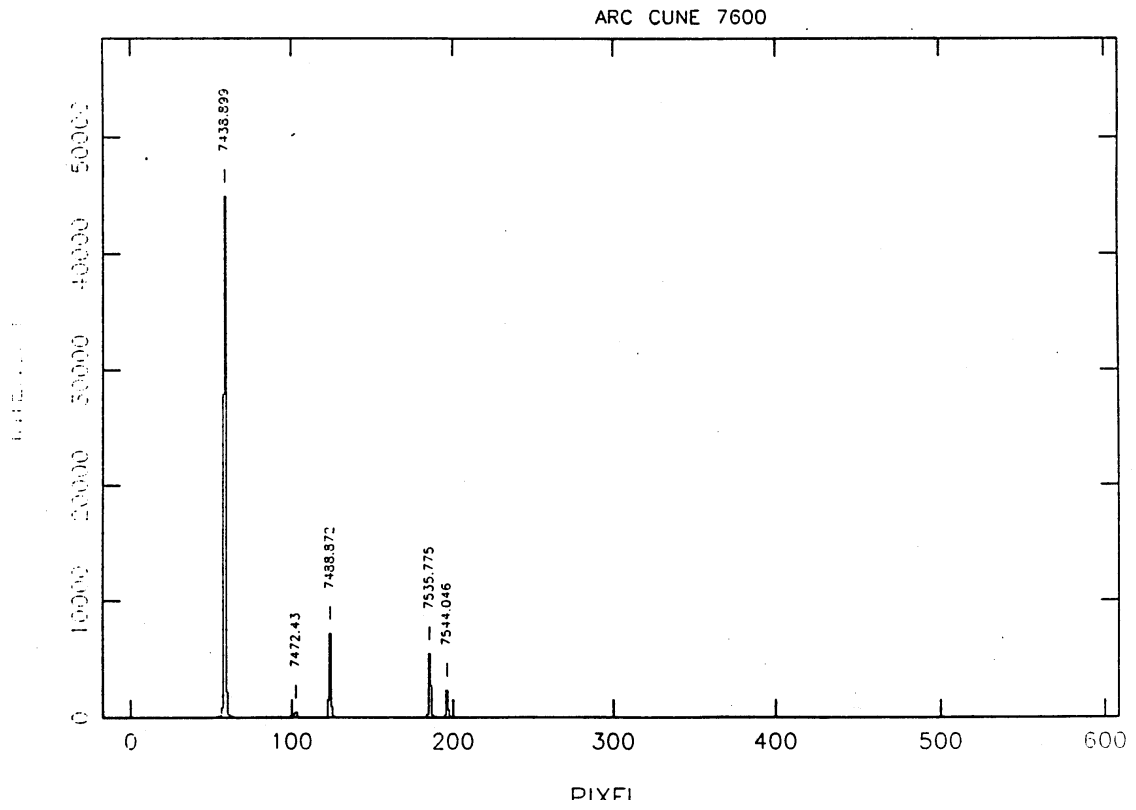
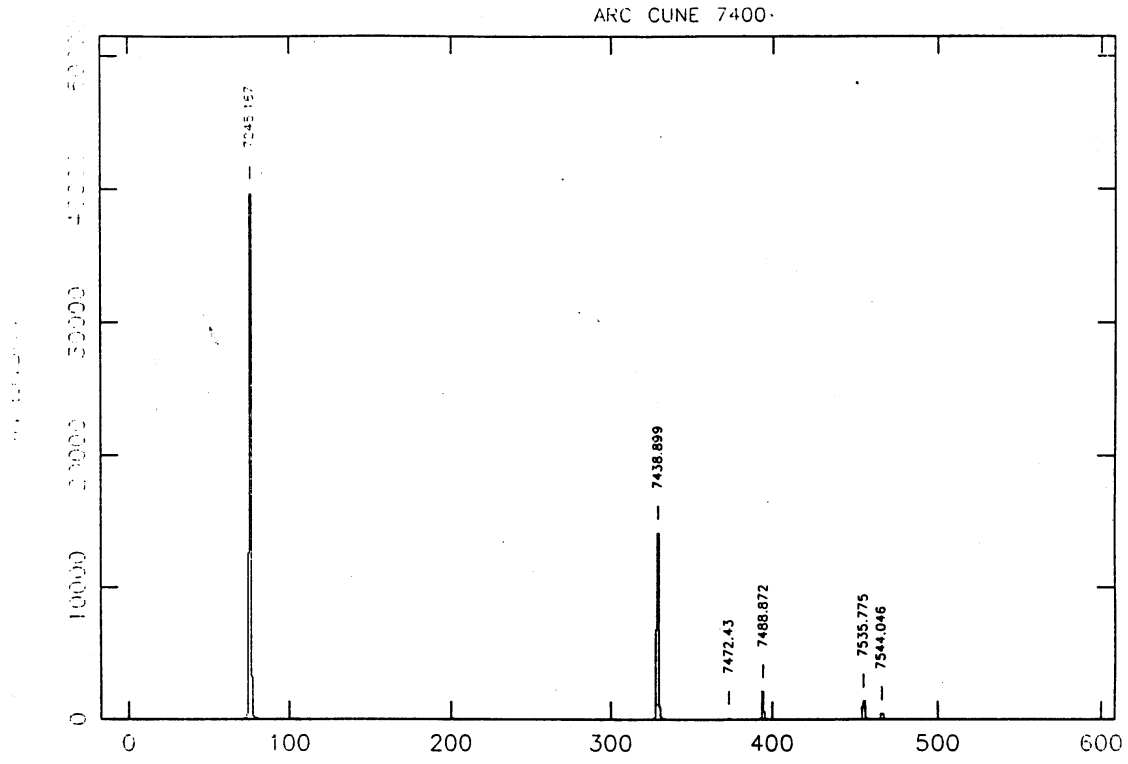




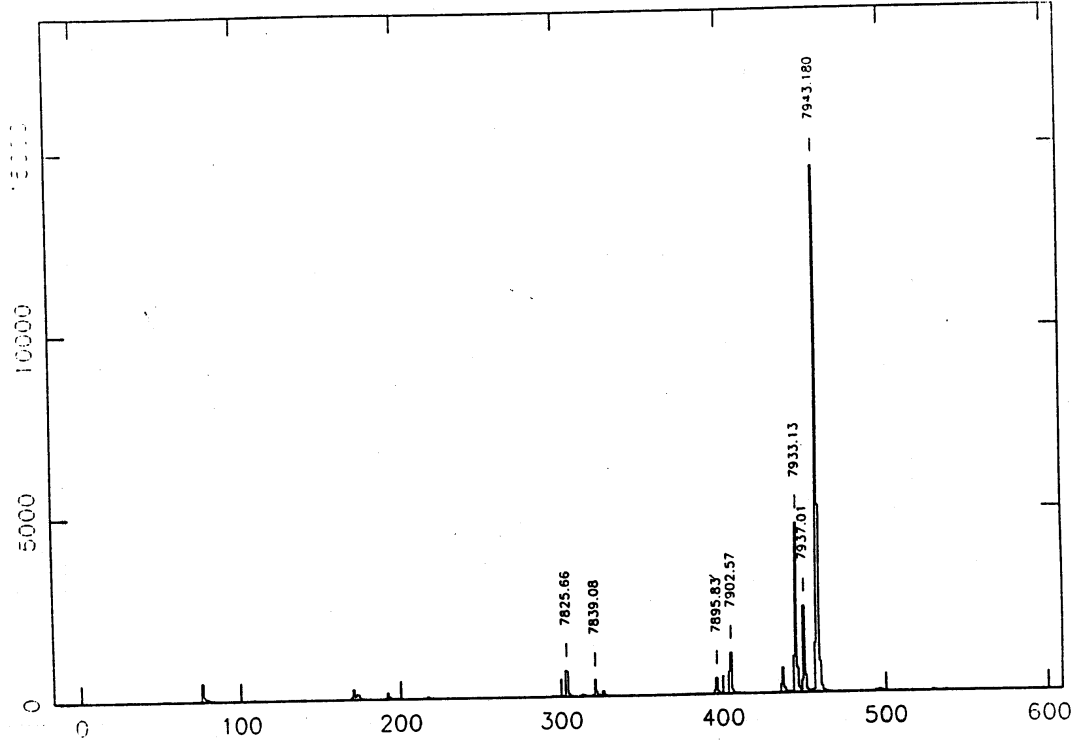




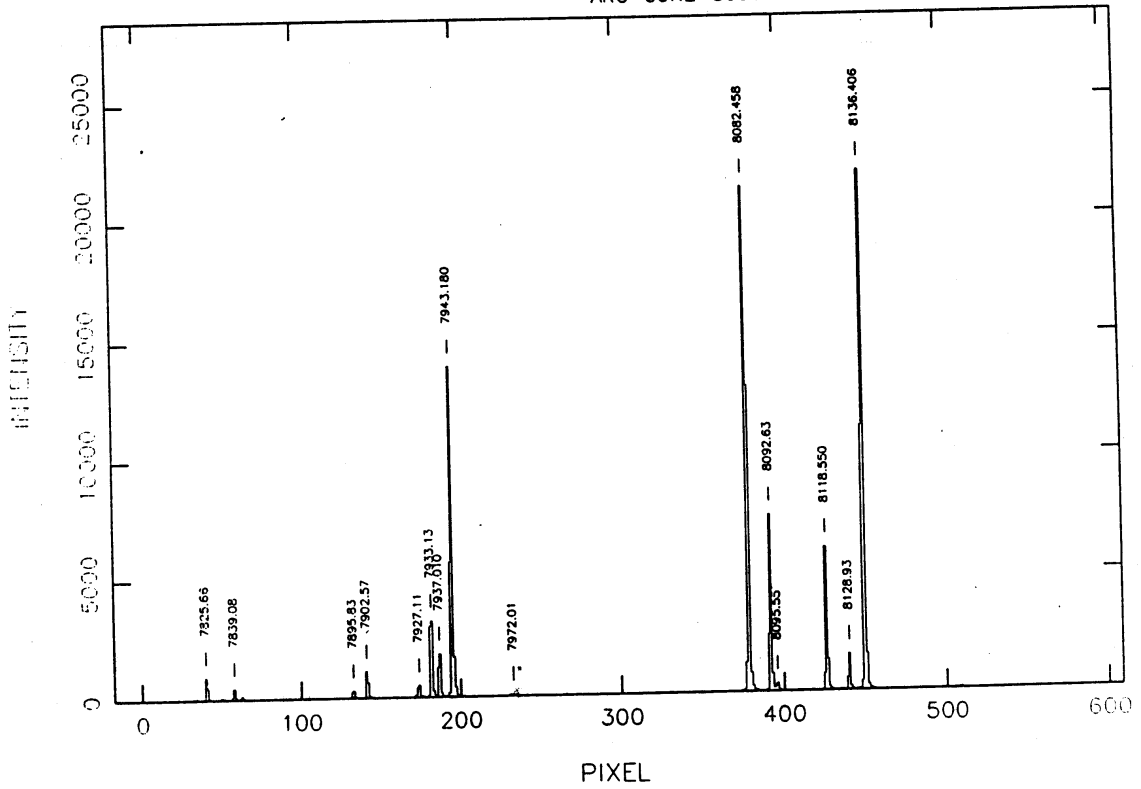


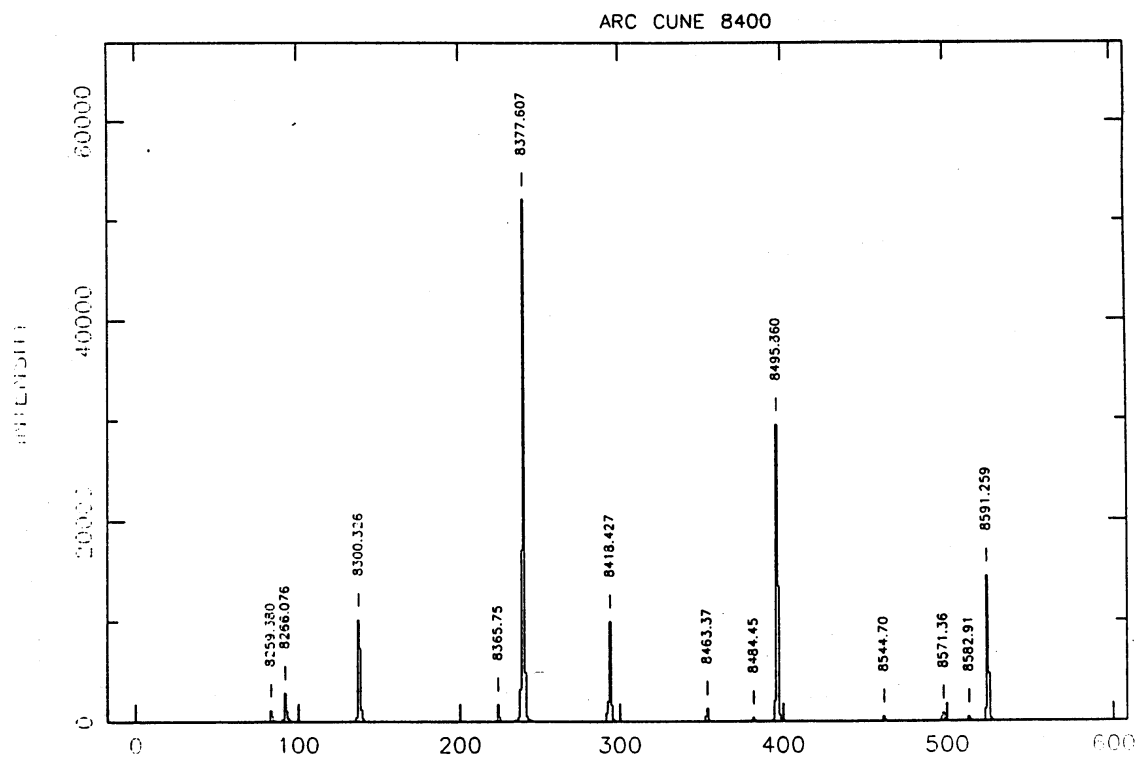
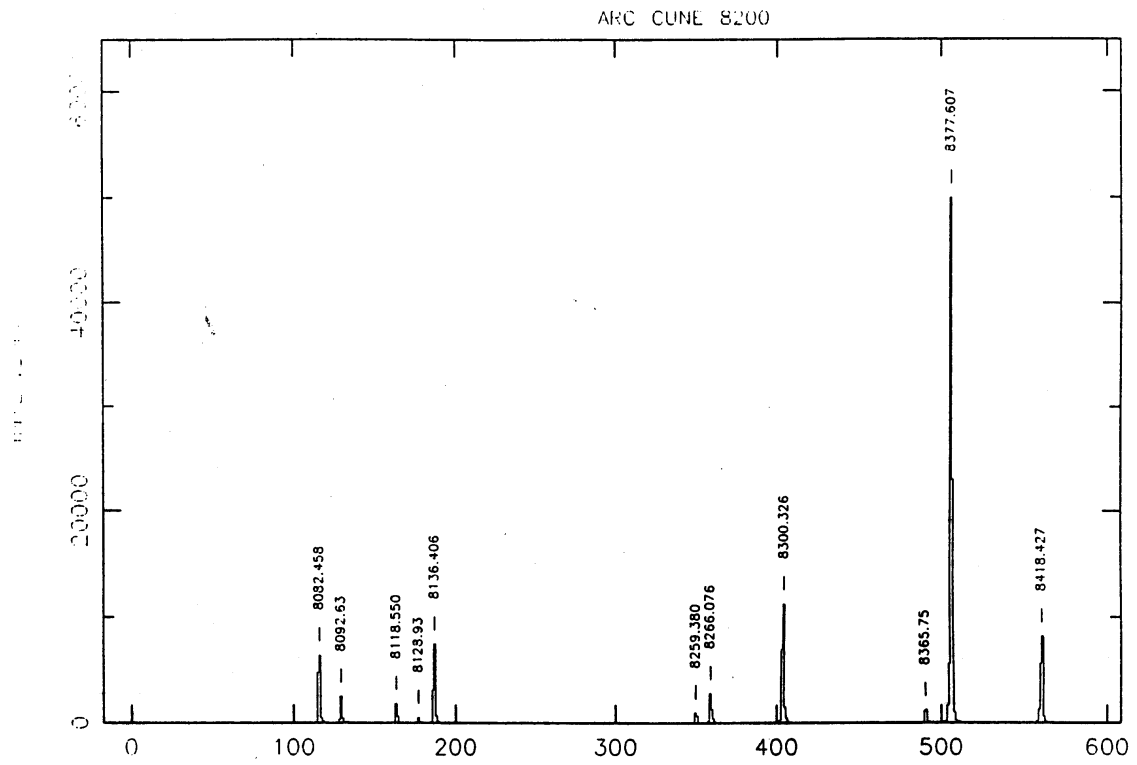


ARC CUNE 7800

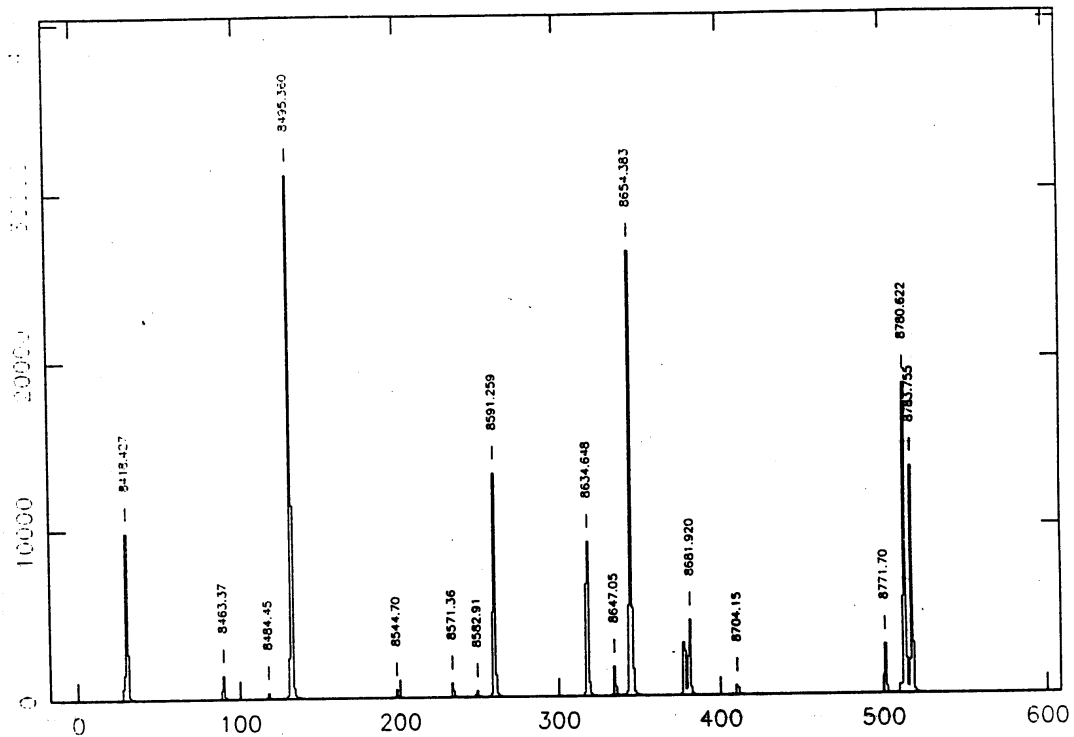


ARC CUNE 8000

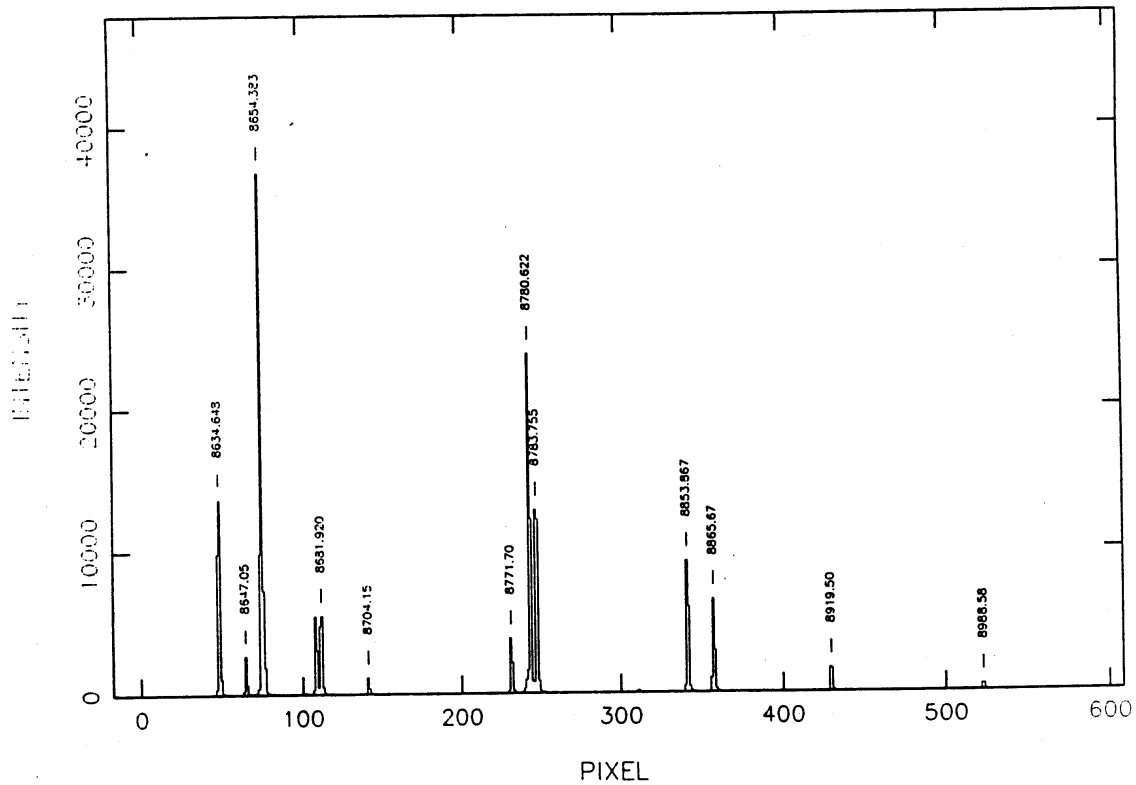




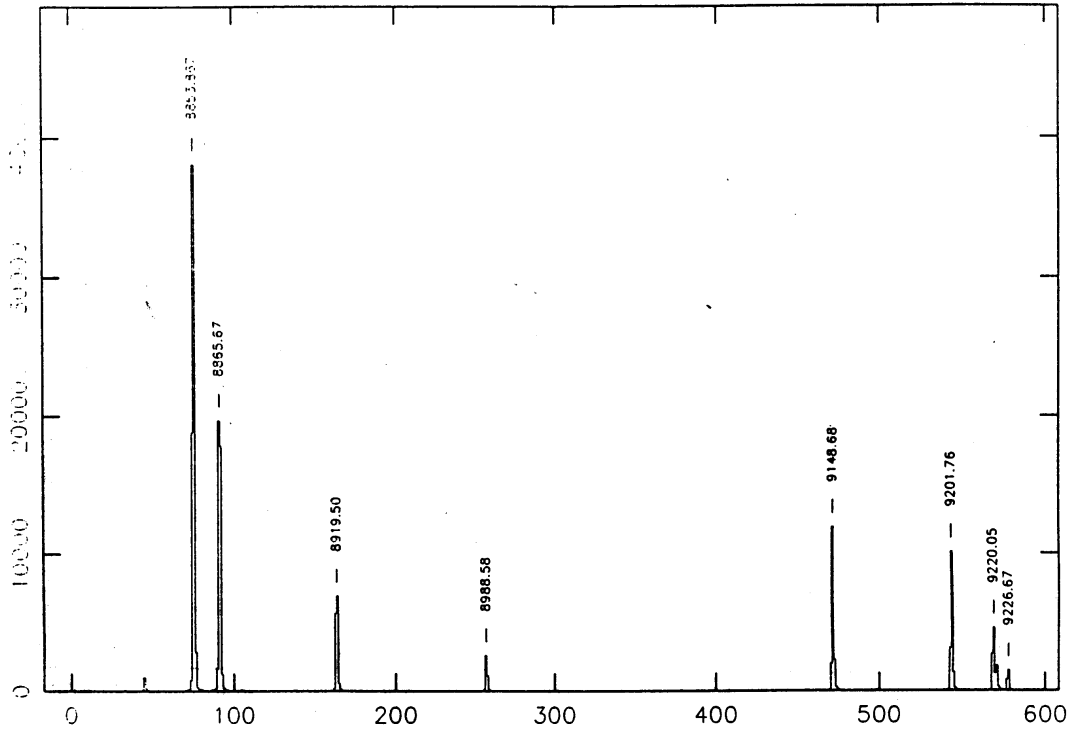
ARC CUNE 8600



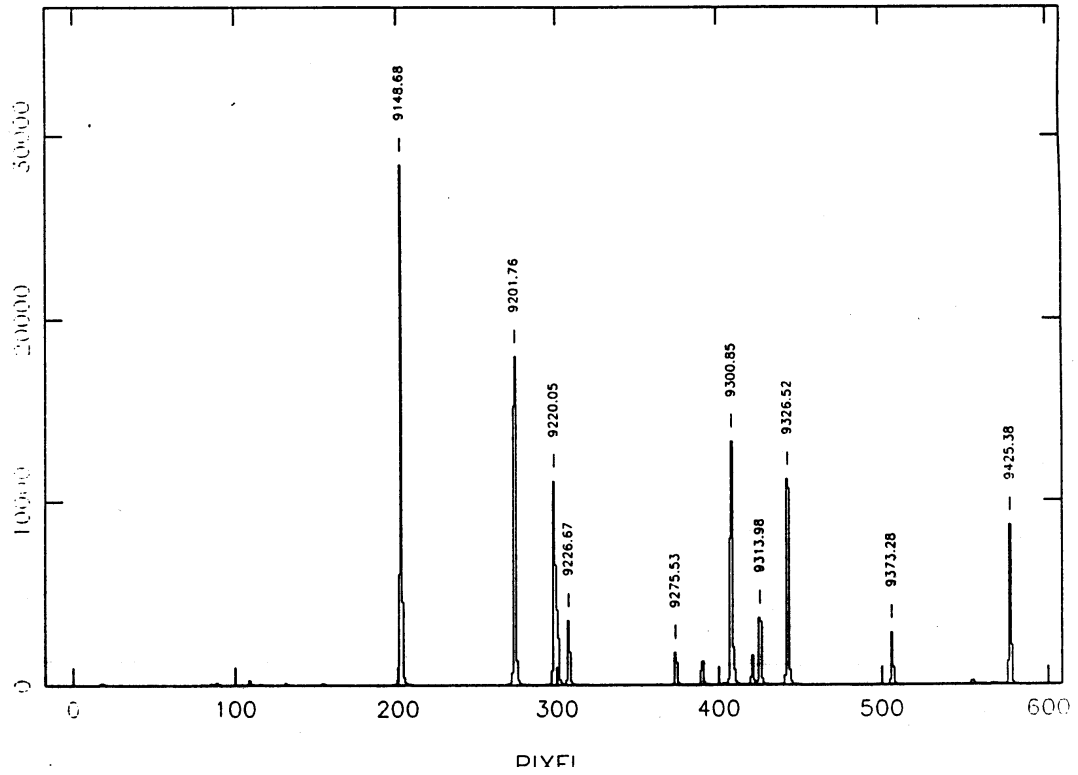
ARC CUNE 8800



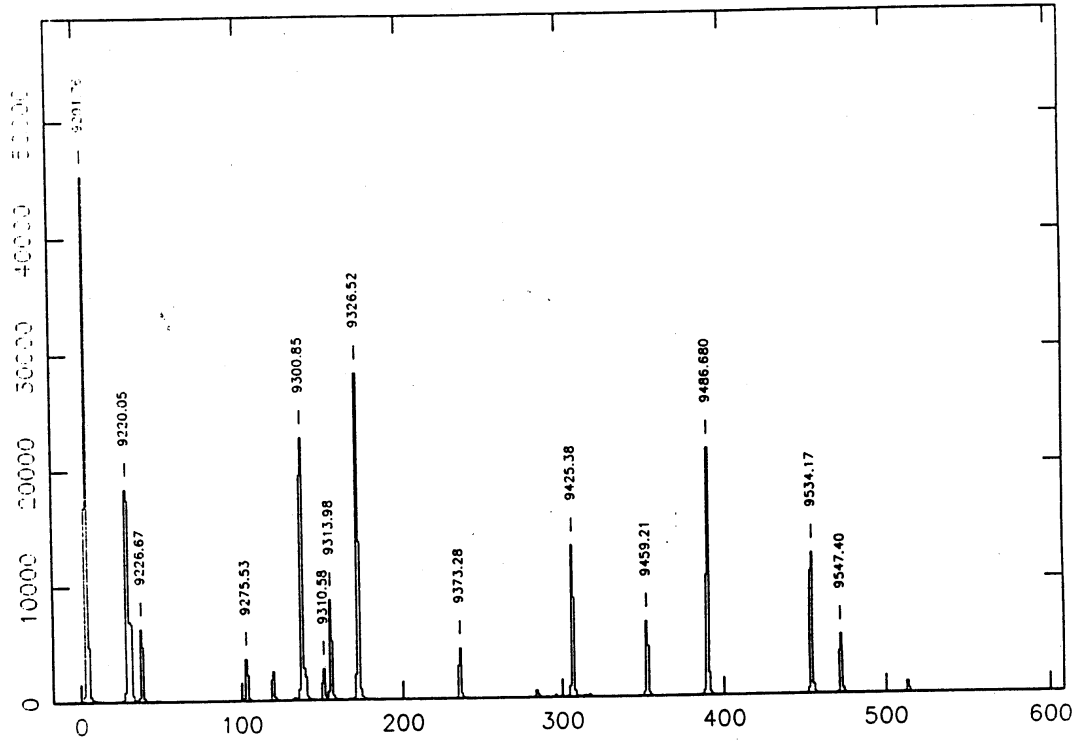
ARC CUNE 9000



ARC CUNE 9200



ARC CUNE 9400



ARC CUNE 9600

