

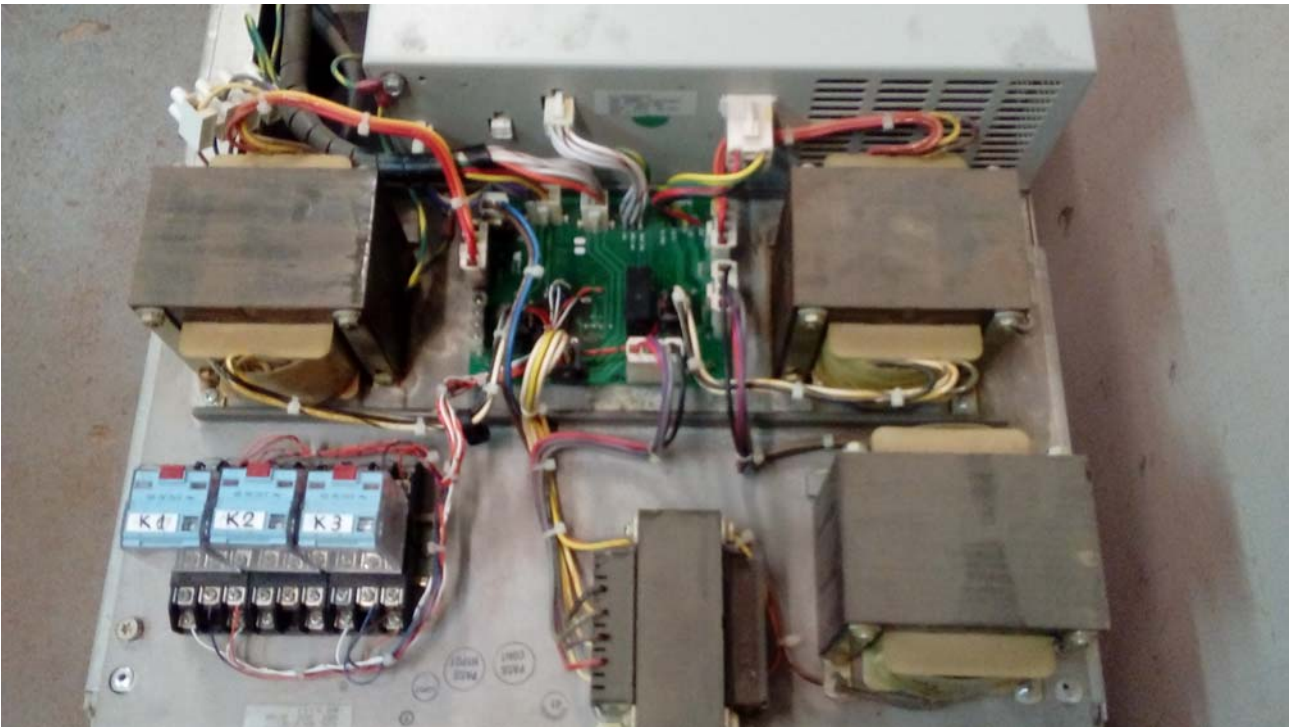
LIRIS COMPRESSOR N°:1

Modifications to the cold head motor control board.



Solution : The relays of the cold head motor control board have been installed outside the cold head on a DIN rail. The original relays K1 and K3 were burned and affected the card where they were soldered.

Roberto Martínez Rayón September 2018



Three relays K1,K2 and K3 have been installed on a DIN rail next to the control card and wiring interconnection (Ref: 8135167G001).

-- K1 and K3 are connected to the control board with new cables.

-- K2 has also been installed on the DIN rail, for possible future failure, but is not connected to the board as the original relay is in good condition.

